

Weekly Bankruptcy Analysis

August 15-21, 2022

Written by:

Ed Flynn¹

American Bankruptcy Institute; Alexandria, Va.

The 7,493 bankruptcy cases filed last week were slightly above the 7,491 filings recorded during the same week last year. Chapter 7 filings continue to fall from prior years, while chapter 13 filings are at their highest level since the onset of the pandemic. Total filings are down by about half compared to 2019 (pre-pandemic).

Bankruptcy Filings August 15 - 21, 2022				
Type of Case	Number Filed	Percent Change From Same Week Last Three Years		
		2021	2020	2019
Total	7,493	0.03%	-18.4%	-47.9%
- Chapter 7	4,236	-16.9%	-36.9%	-52.9%
- Chapter 11	137	121.0%	-27.1%	28.0%
- Chapter 13	3,119	34.3%	37.6%	-40.8%
- Other Cases*	1	-88.9%	-87.5%	-92.3%
* Chapters 9, 12 and 15				

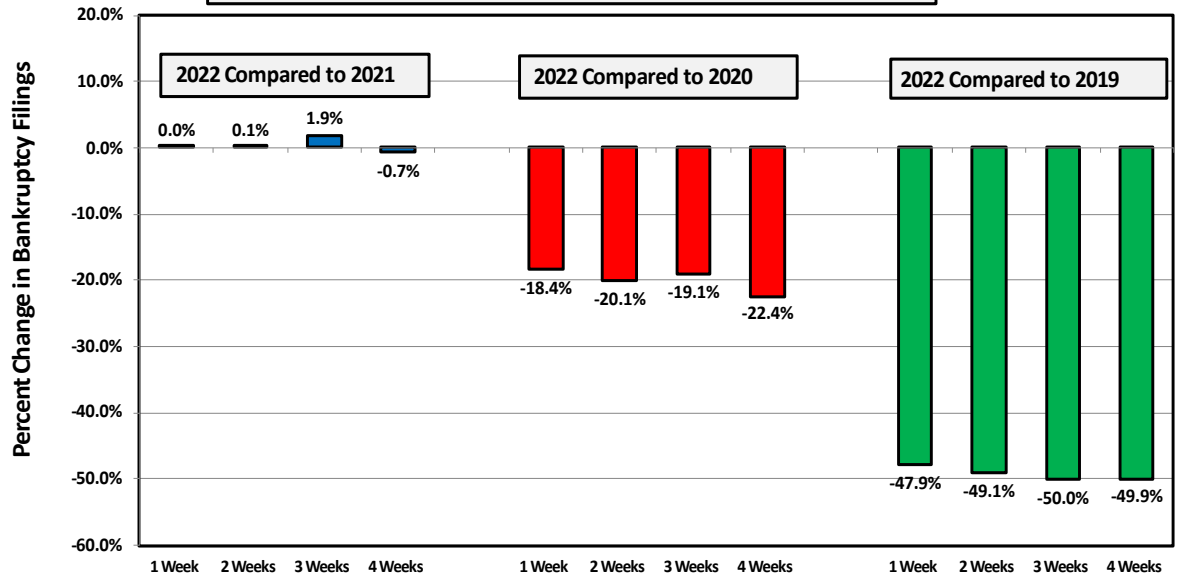
The following charts show recent weekly filing trends by chapter compared to 2021, 2020 and 2019.

¹ Ed Flynn is a consultant with ABI. He previously worked for more than 30 years at the Executive Office for U.S. Trustees and the Administrative Office of the U.S. Courts.

Week Ending
August 21

Bankruptcy Filing Trends (All Chapters)

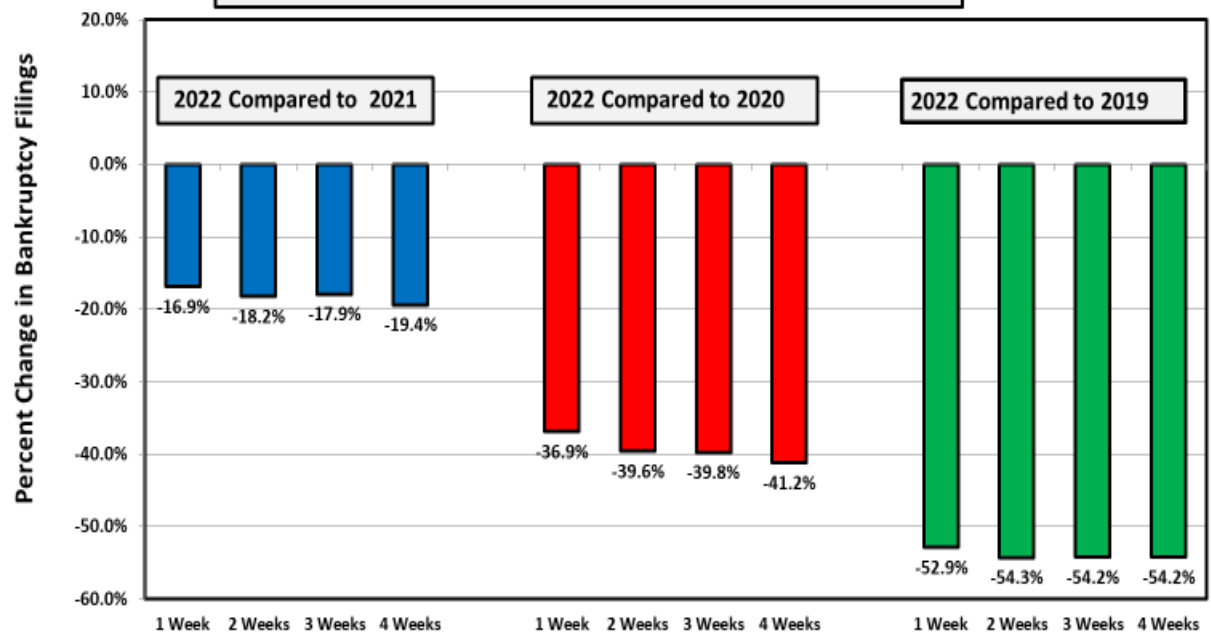
Percent Change From 2021, 2020, and 2019



Week Ending
August 21

Chapter 7 Filing Trends

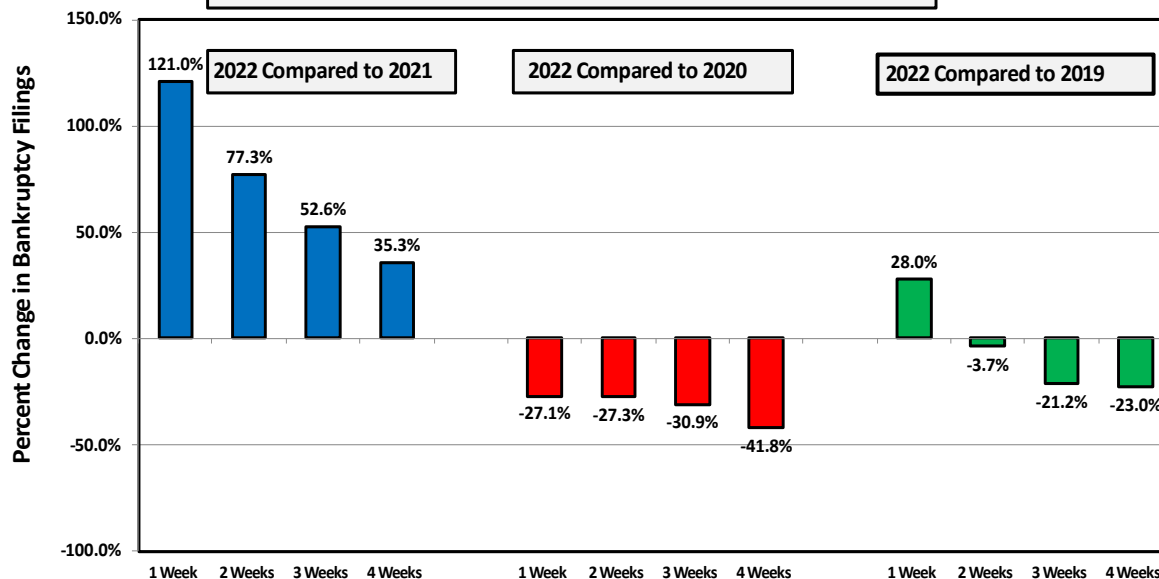
Percent Change From 2021, 2020, and 2019



Week Ending
August 21

Chapter 11 Filing Trends

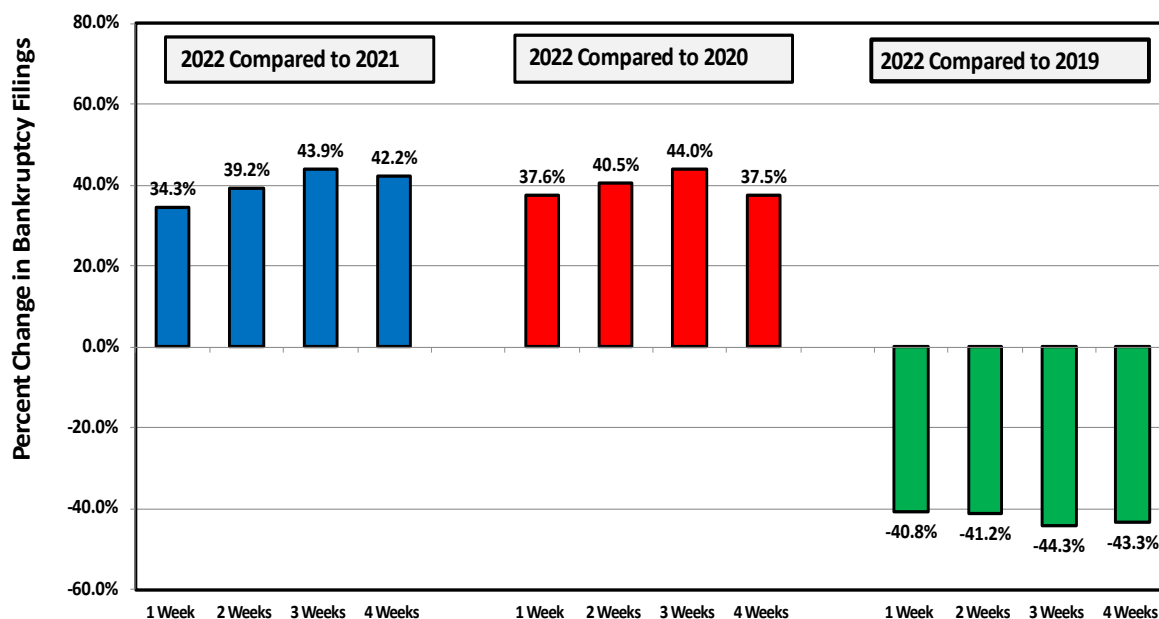
Percent Change From 2021, 2020, and 2019



Week Ending
August 21

Chapter 13 Filing Trends

Percent Change From 2021, 2020, and 2019



Chapter 11 Cases

The 137 cases filed last week represented the third-highest weekly total this year. However, 72 of the cases were related to the filing by Endo International Plc. The pharmaceutical company filed in the Southern District of New York on August 16. Excluding related filings by corporate subsidiaries, filings were about the same as last year, but well below the number filed during 2019 and 2020.

Types of Chapter 11 Cases Filed				
	August 15 - 21			
	2022	2021	2020	2019
Total Filed	137	62	188	107
Solo Cases	50	49	72	88
Parent Cases	5	1	5	7
Child Cases	82	12	111	12
<i>Filed By Individuals</i>	12	18	22	28
Subchapter V Cases	28	19	30	N/A

See ABI's Newsroom for news of the latest filings, and other news of interest to bankruptcy professionals, at www.abi.org.