

Weekly Bankruptcy Analysis December 14-20, 2020

Written by:

Ed Flynn¹

American Bankruptcy Institute; Alexandria, Va.

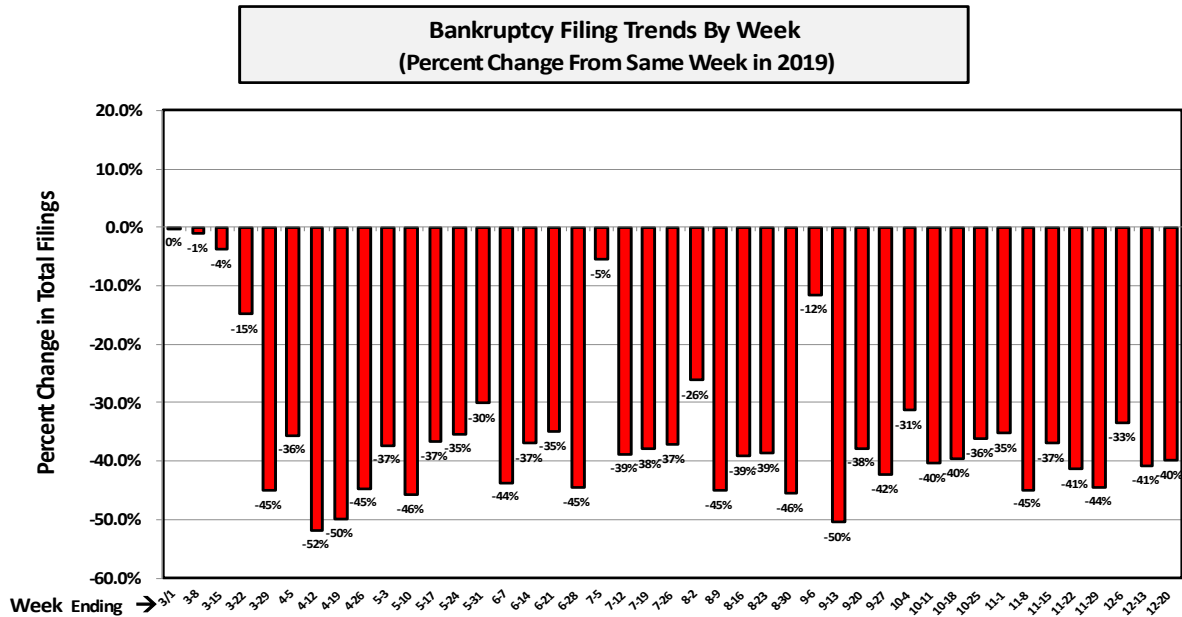
Total filings were down by nearly 40 percent during the week ending December 20 compared to the same week in 2019.² Once again, the largest decline involved chapter 13 filings, which were down by over one-half from last year.

Bankruptcy Filings December 14 - 20, 2020		
Type of Case	Number Filed	Percent Change From Same Week in 2019
Total	8,249	-39.8%
- Chapter 7	5,744	-33.2%
- Chapter 11	104	-18.1%
- Chapter 13	2,391	-51.7%
- Other Cases*	10	-44.4%
* Chapters 9, 12 and 15		

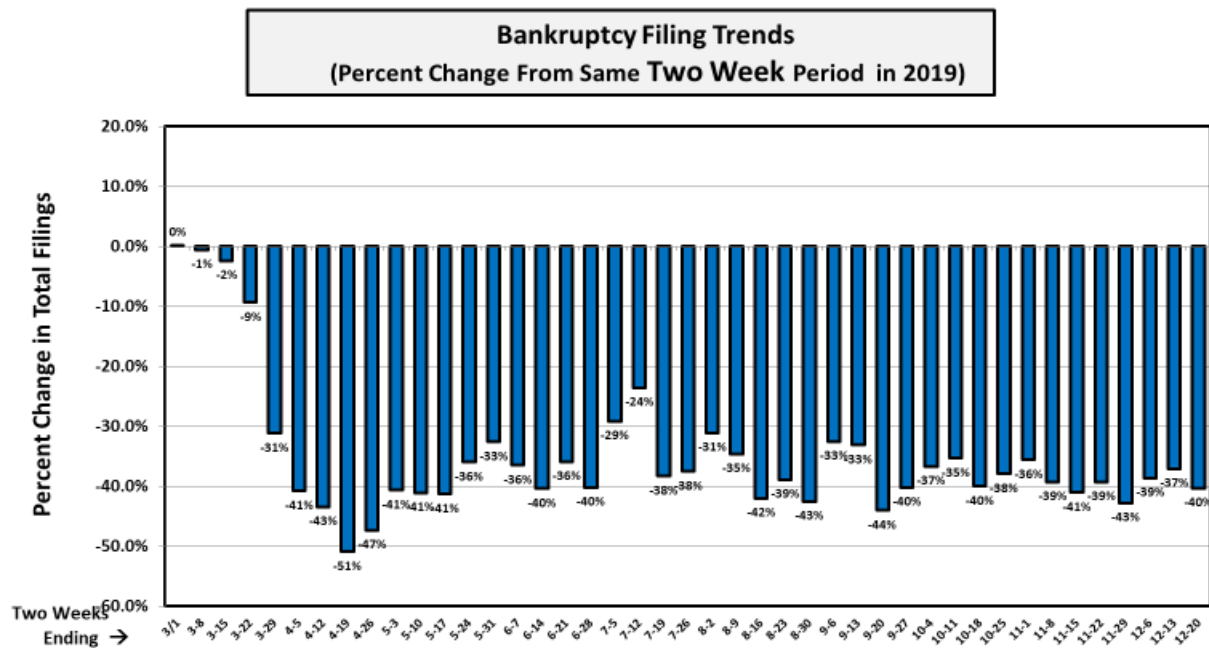
The following chart shows the weekly trends since March.

¹ Ed Flynn is a consultant with ABI and serves as a coordinating editor for the *ABI Journal*. He previously worked for more than 30 years at the Executive Office for U.S. Trustees and the Administrative Office of the U.S. Courts.

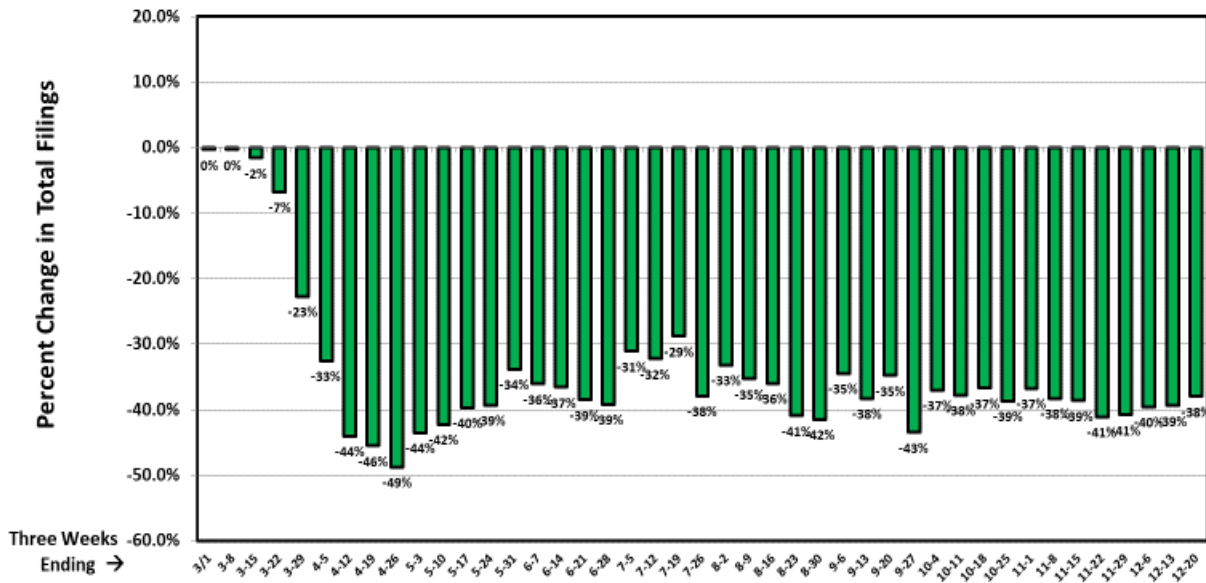
² These figures are from PACER and are subject to change. See <https://www.pacer.gov/>.



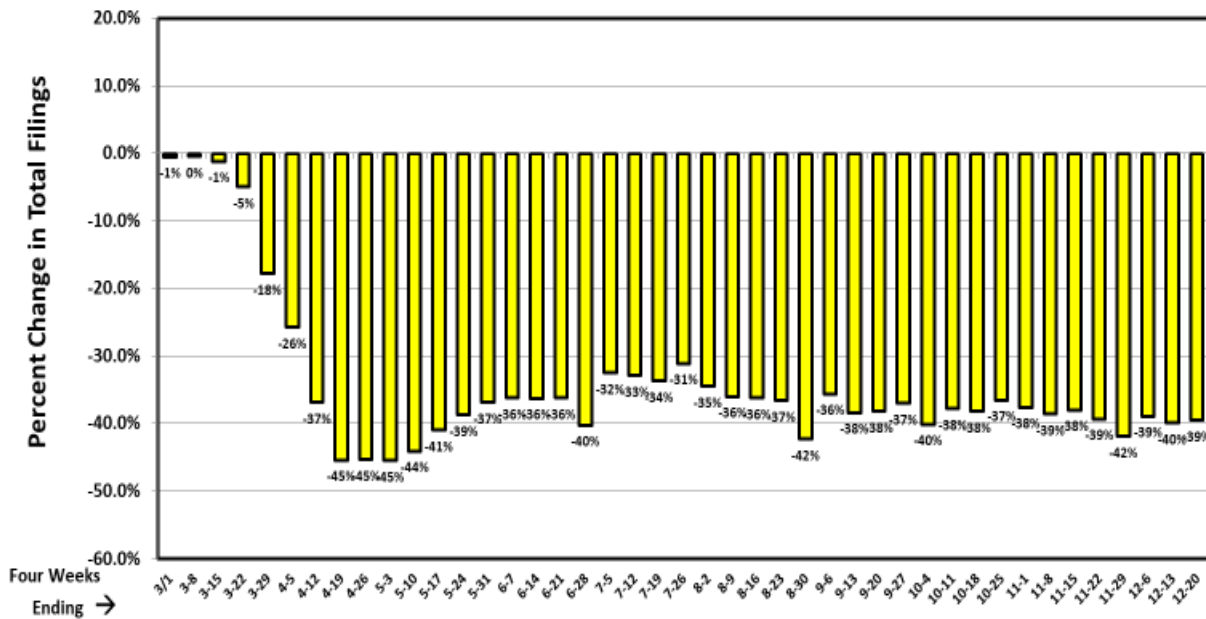
The weekly totals can be affected by several factors. For example, the spike in filings at the end of each month and the timing of holidays can affect weekly totals. To counteract these factors and provide a truer picture of actual trends, the following three charts show the weekly trends based on two-, three- and four-week rolling averages. Overall, they show a continuing pattern of declines of about 40 percent compared to last year (the weekly declines were closer to 50 percent during April, when COVID-19 shutdowns were at their peak).



Bankruptcy Filing Trends (Percent Change From Same Three Week Period in 2019)



Bankruptcy Filing Trends (Percent Change From Same Four Week Period in 2019)



Chapter 11 Cases

Chapter 11 filings were also down from the same week last year. With 30 subchapter V cases filed during the week, over 1,300 such cases have been filed in the 10 months since it has been available.

Types of Chapter 11 Cases Filed		
	December 14 - 20	
	2020	2019
Total Filed	104	127
Solo Cases	60	77
Parent cases	8	13
Child cases	36	37
<i>Filed By Individuals</i>	13	36
Subchapter V Cases	30	NA

With less than two weeks to go in the year, there have been 8,082 chapter 11 cases filed thus far in 2020 — more than in any year since 2013. Three judicial districts have accounted for nearly one-half of chapter 11 filings during the year: Delaware (1,644), the Southern District of Texas (1,367) and the Southern District of New York (677). These districts have been the preferred venue for most of the large corporate filings that often include multiple related cases.

See ABI's Daily Headlines for news of the latest filings at <https://www.abi.org/newsroom/headlines>.