

Weekly Bankruptcy Analysis

June 13-19, 2022

Written by:

Ed Flynn¹

American Bankruptcy Institute; Alexandria, Va.

During the week ended June 19, bankruptcy filings were down slightly from the same week last year and were down by nearly 30 percent from 2020 (early in the pandemic). Additionally, filings last week were down by more than half from 2019 (pre-pandemic).

Bankruptcy Filings June 13 - 19, 2022				
Type of Case	Number Filed	Percent Change From Same Week Last Three Years		
	2022	2021	2020	2019
Total	6,806	-8.9%	-29.9%	-53.5%
- Chapter 7	3,988	-25.8%	-46.2%	-56.7%
- Chapter 11	101	-36.1%	-27.9%	-11.4%
- Chapter 13	2,710	40.3%	26.2%	-48.9%
- Other Cases*	7	16.7%	-36.4%	-61.1%
* Chapters 9, 12 and 15				

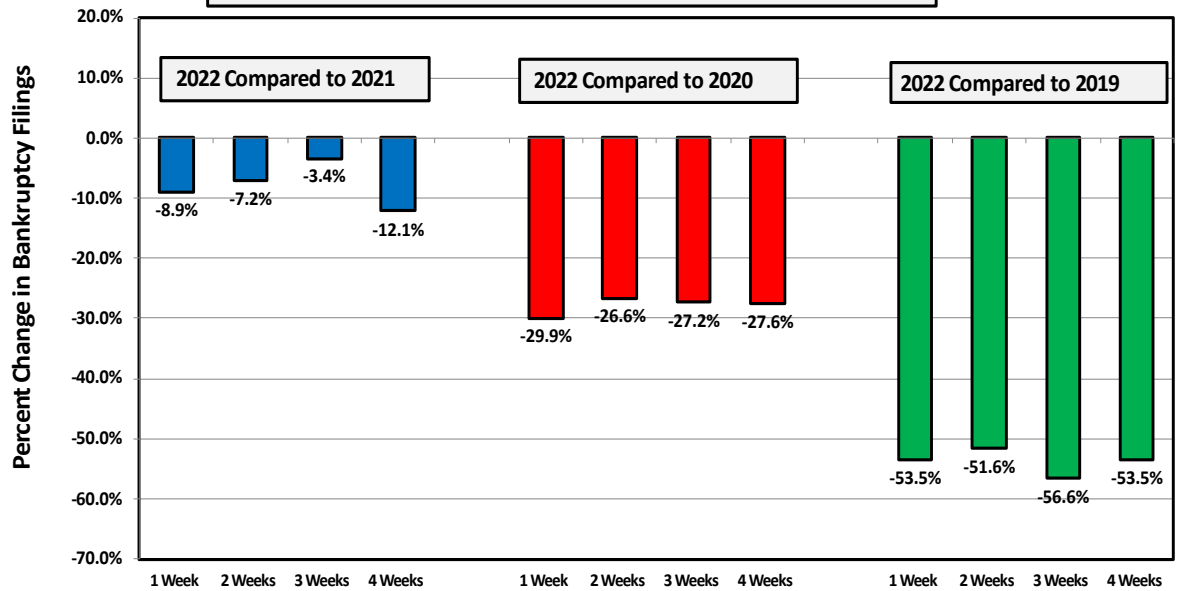
The following charts show recent weekly filing trends by chapter compared to 2021, 2020 and 2019.

¹ Ed Flynn is a consultant with ABI. He previously worked for more than 30 years at the Executive Office for U.S. Trustees and the Administrative Office of the U.S. Courts.

Week Ending
June 19

Bankruptcy Filing Trends (All Chapters)

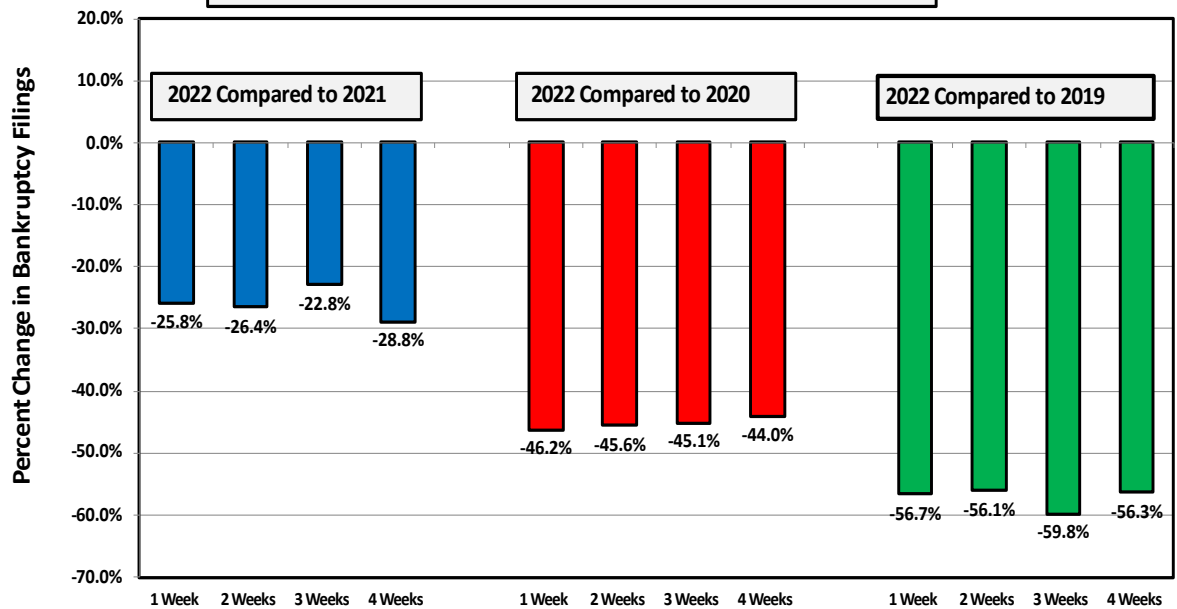
Percent Change From 2021, 2020, and 2019



Week Ending
June 19

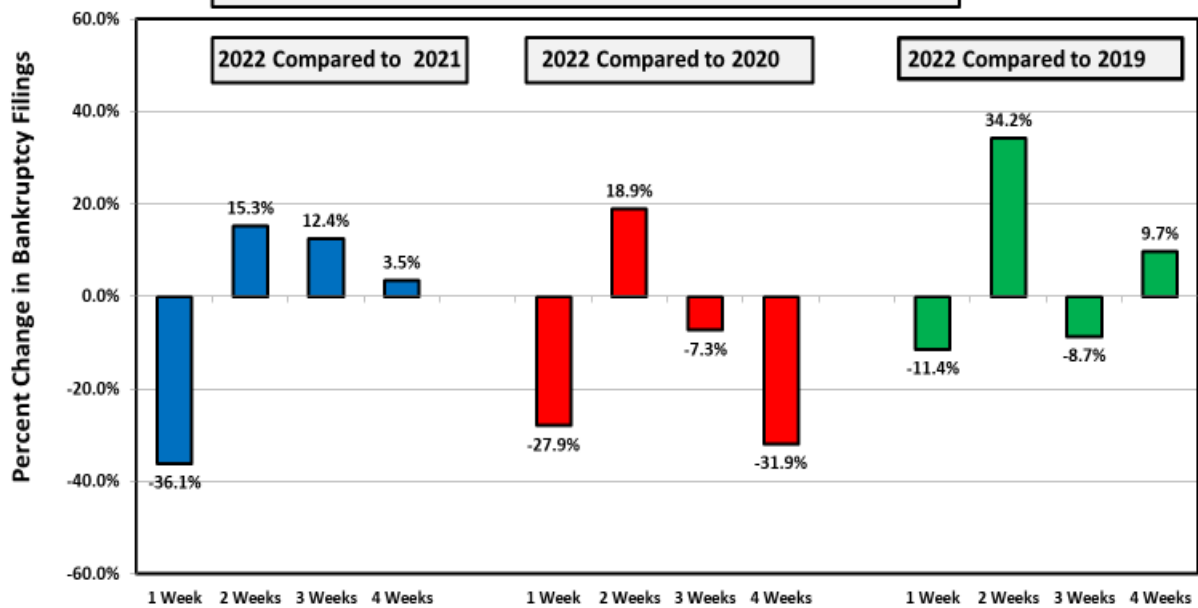
Chapter 7 Filing Trends

Percent Change From 2021, 2020, and 2019



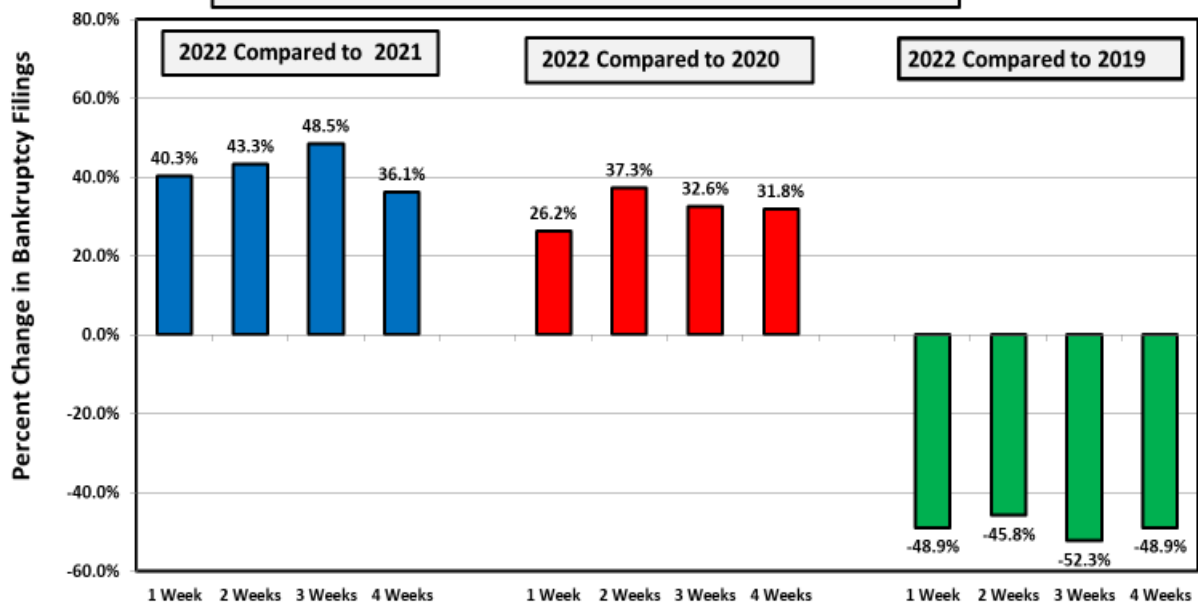
Week Ending
June 19

Chapter 11 Filing Trends Percent Change From 2021, 2020, and 2019



Week Ending
June 19

Chapter 13 Filing Trends Percent Change From 2021, 2020, and 2019



Chapter 11 Cases

The 101 chapter 11 filings last week marked only the fourth time this year that at least 100 chapter 11 cases were filed in a single week. However, more than half the cases were related

filings by corporate subsidiaries. Excluding related cases, filings last week were about the same as in 2021, but well below filing levels during this week in 2020 and 2019.

There were two notable filings during the week. On June 16, oil rig operator LaForta-Gestao e Investimentos filed in the Southern District of Texas. Also on June 16, beauty products company Revlon Inc. filed in the Southern District of New York along with 38 related entities.

Types of Chapter 11 Cases Filed				
	June 13 - 19			
	2022	2021	2020	2019
Total Filed	101	158	140	114
Solo Cases	43	45	65	72
Parent Cases	4	6	15	6
Child Cases	54	107	60	36
<i>Filed By Individuals</i>	10	18	23	21
Subchapter V Cases	18	24	30	N/A

See ABI's Newsroom for news of the latest filings, and other news of interest to bankruptcy professionals, at www.abi.org.