

Weekly Bankruptcy Analysis

June 6-12, 2022

Written by:

Ed Flynn¹

American Bankruptcy Institute; Alexandria, Va.

During the week ended June 5, bankruptcy filings were down slightly from the same week last year and were down by nearly one quarter from 2020 (early in the pandemic). Additionally, filings last week were down by nearly half from 2019 (pre-pandemic).

Bankruptcy Filings June 6 -12, 2022				
Type of Case	Number Filed	Percent Change From Same Week Last Three Years		
	2022	2021	2020	2019
Total	7,000	-5.5%	-23.2%	-49.6%
- Chapter 7	3,859	-27.1%	-45.1%	-55.4%
- Chapter 11	201	93.3%	76.3%	81.1%
- Chapter 13	2,936	46.2%	49.3%	-42.6%
- Other Cases*	4	-55.6%	-55.6%	-66.7%
* Chapters 9, 12 and 15				

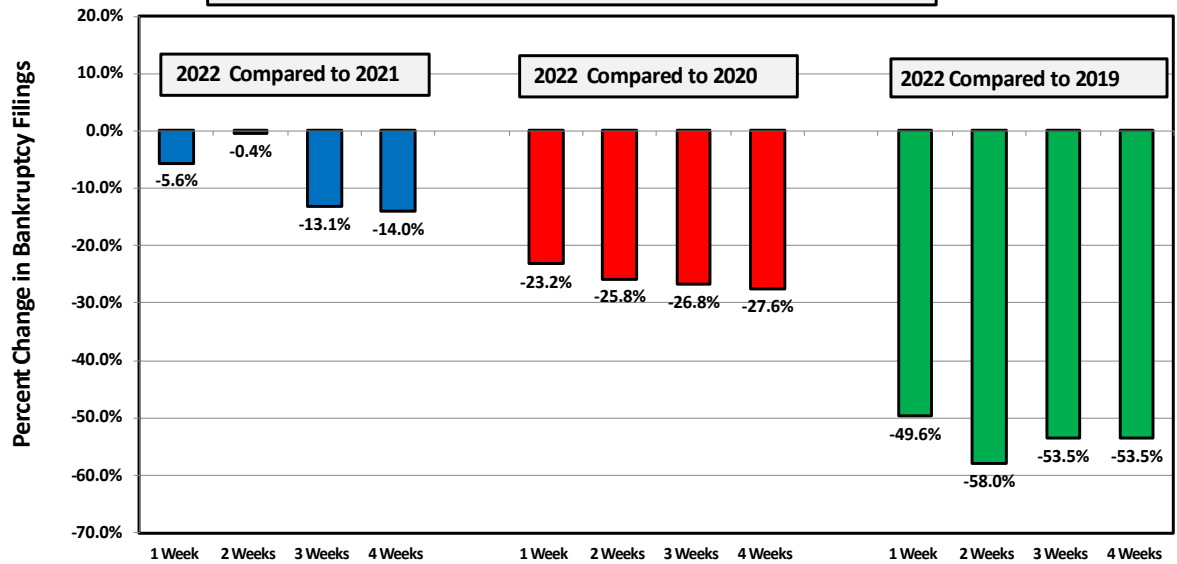
The following charts show recent weekly filing trends by chapter compared to 2021, 2020 and 2019.

¹ Ed Flynn is a consultant with ABI. He previously worked for more than 30 years at the Executive Office for U.S. Trustees and the Administrative Office of the U.S. Courts.

Week Ending
June 12

Bankruptcy Filing Trends (All Chapters)

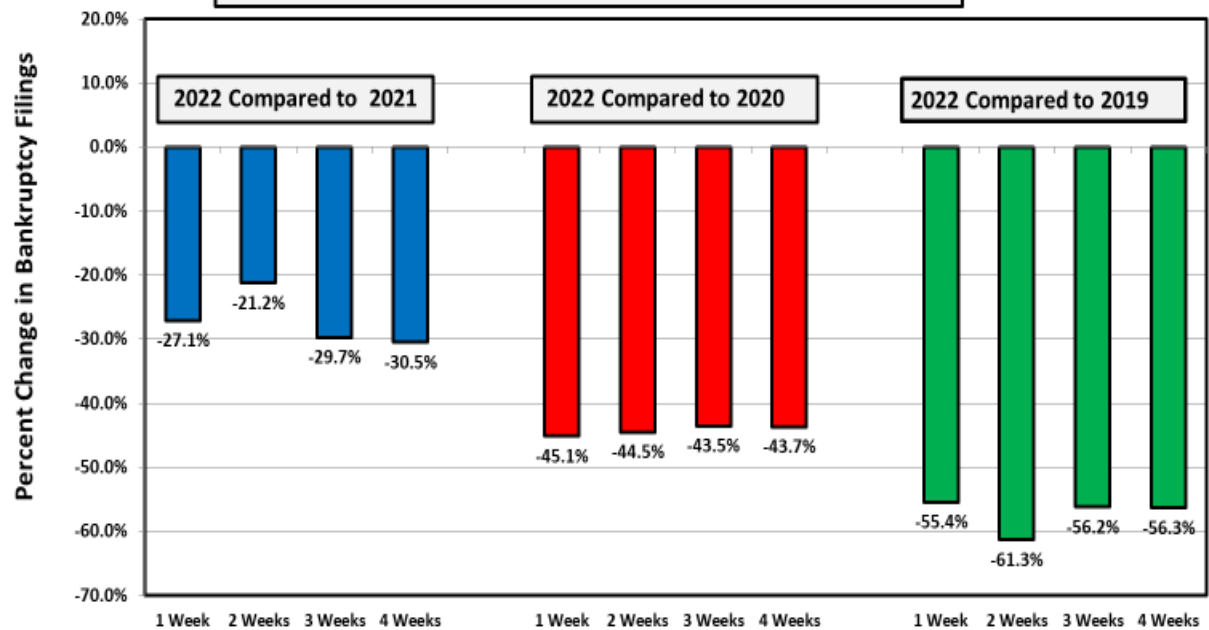
Percent Change From 2021, 2020, and 2019



Week Ending
June 12

Chapter 7 Filing Trends

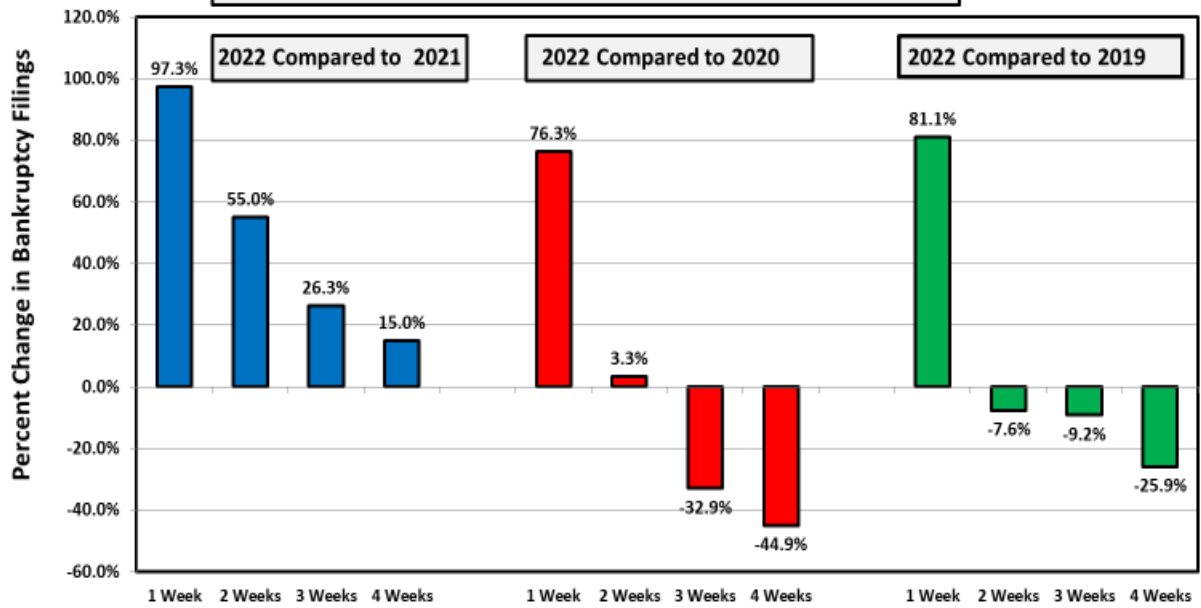
Percent Change From 2021, 2020, and 2019



Week Ending
June 12

Chapter 11 Filing Trends

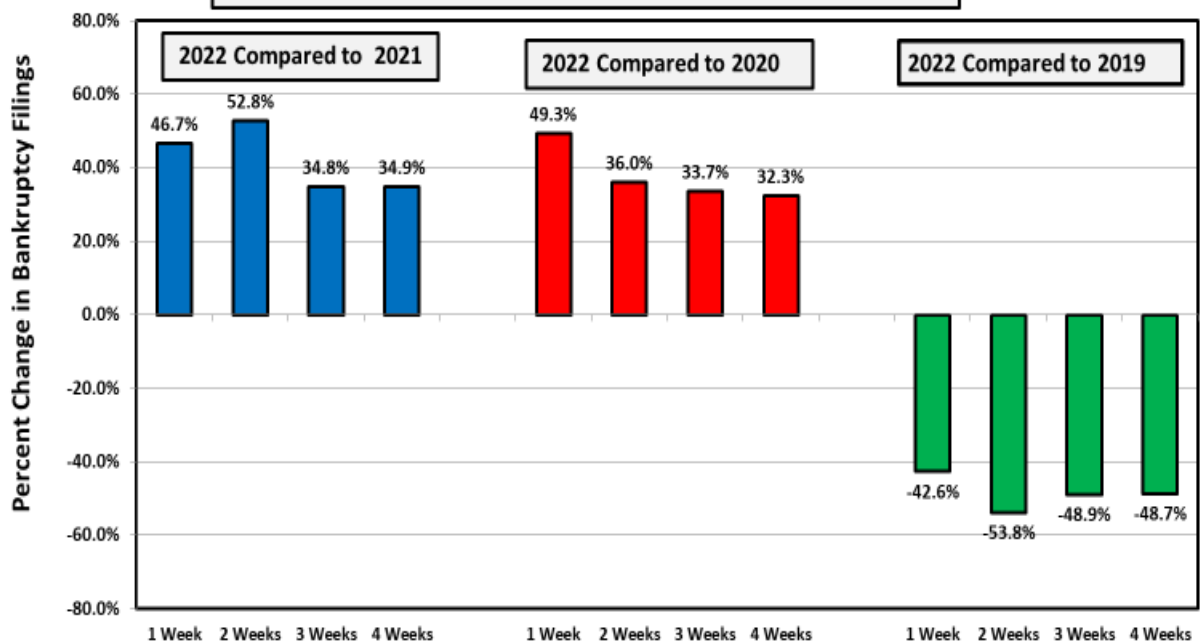
Percent Change From 2021, 2020, and 2019



Week Ending
June 12

Chapter 13 Filing Trends

Percent Change From 2021, 2020, and 2019



Chapter 11 Cases

The 201 chapter 11 filings last week represented the highest weekly total in well over a year. However, nearly two-thirds of these cases were filings related to the filing by National Realty Investment Advisors, LLC, a real estate investment firm that is facing state and federal investigations. The company filed in the District of New Jersey on June 7 along with 132 related entities. Excluding related cases, filings last week were about the same as in 2021 and 2020 and were somewhat below filings in 2019 (pre-pandemic).

Types of Chapter 11 Cases Filed				
	June 6 - 12			
	2022	2021	2020	2019
Total Filed	201	104	114	111
Solo Cases	61	57	59	84
Parent Cases	3	4	8	6
Child Cases	137	43	47	21
<i>Filed By Individuals</i>	11	18	19	30
Subchapter V Cases	25	29	28	N/A

See ABI's Newsroom for news of the latest filings, and other news of interest to bankruptcy professionals, at www.abi.org.