

Weekly Bankruptcy Analysis

May 9-15, 2022

Written by:

Ed Flynn¹

American Bankruptcy Institute; Alexandria, Va.

The 7,032 bankruptcy case filings during the week ended May 15 were well below the weekly total for the same week during 2021 and 2020 and were less than half the number filed during the same week in 2019 (pre-pandemic). Chapter 7 filings continue to fall from earlier in the pandemic, while chapter 13 case filings are up substantially from 2021 and 2020.

Bankruptcy Filings May 9 - 15, 2022				
Type of Case	Number Filed	Percent Change From Same Week Last Three Years		
	2022	2021	2020	2019
Total	7,032	-14.0%	-25.5%	-52.6%
- Chapter 7	4,166	-31.9%	-42.8%	-56.2%
- Chapter 11	142	118.5%	-24.5%	-12.3%
- Chapter 13	2,722	37.0%	39.8%	-47.2%
- Other Cases*	2	-71.4%	-90.5%	-88.9%
* Chapters 9, 12 and 15				

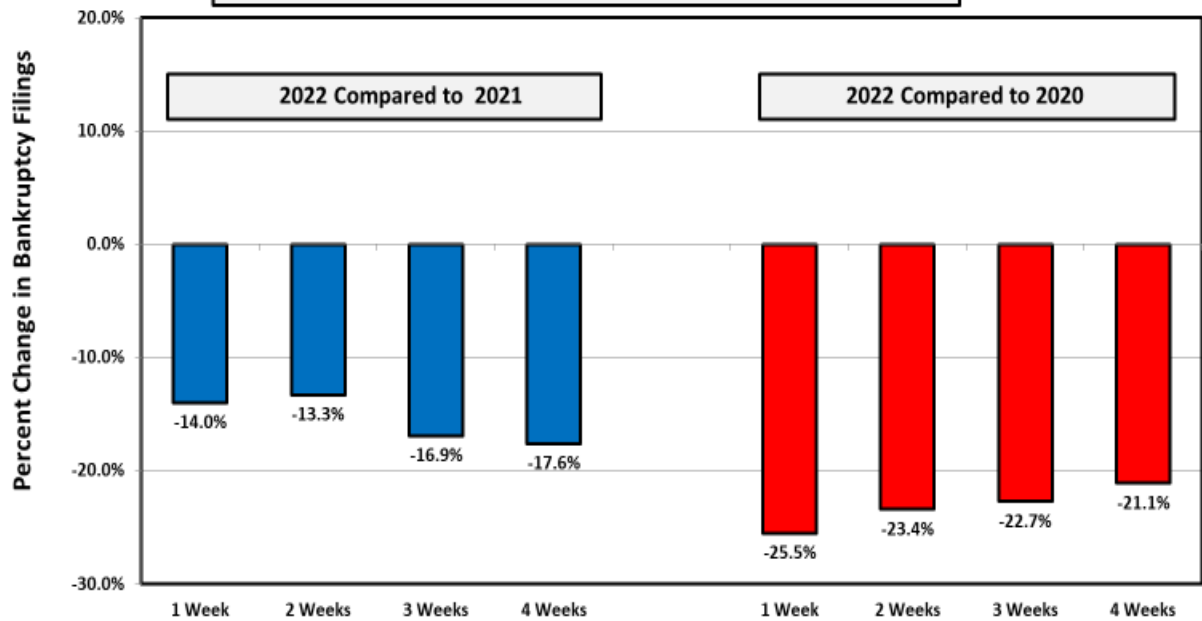
The following charts show recent weekly filing trends by chapter compared to 2021 and 2020.

¹ Ed Flynn is a consultant with ABI. He previously worked for more than 30 years at the Executive Office for U.S. Trustees and the Administrative Office of the U.S. Courts.

Week Ending
May 15

Bankruptcy Filing Trends (All Chapters)

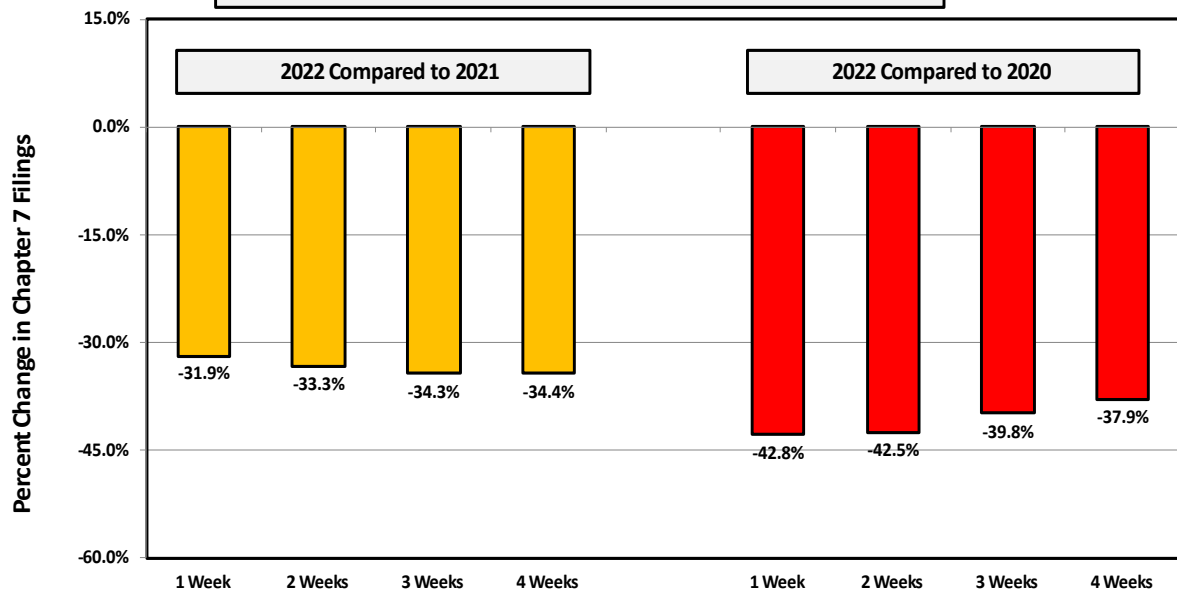
Percent Change From 2021 and 2020



Week Ending
May 15

Chapter 7 Filing Trends

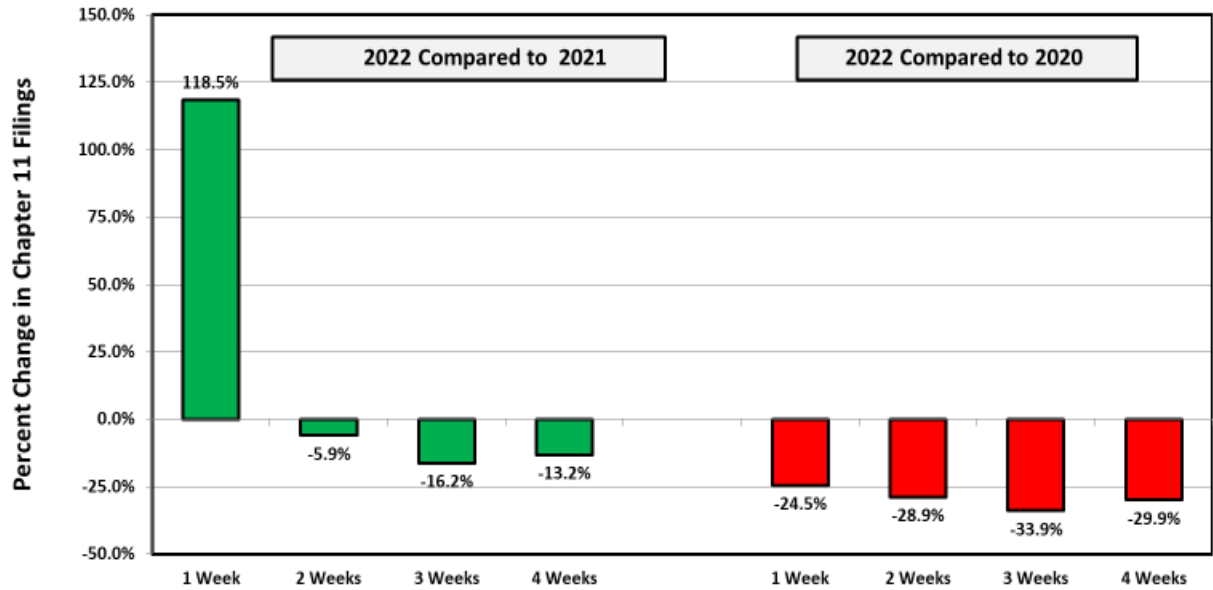
Percent Change From 2021 and 2020



Week Ending
May 15

Chapter 11 Filing Trends

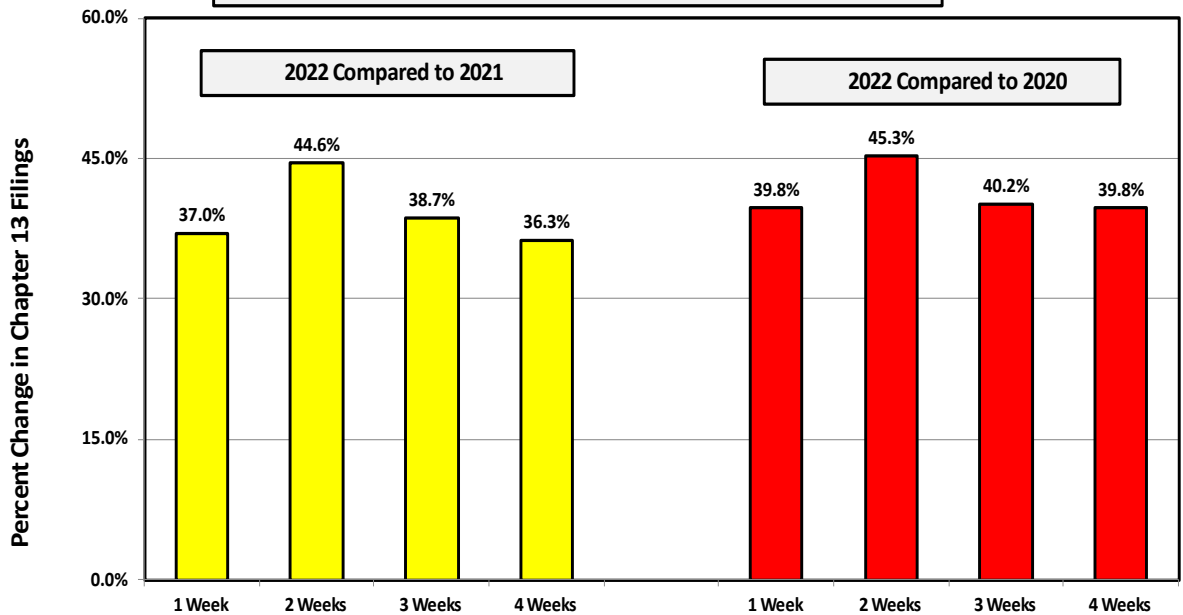
Percent Change From 2021 and 2020



Week Ending
May 15

Chapter 13 Filing Trends

Percent Change From 2021 and 2020



Chapter 11 Cases

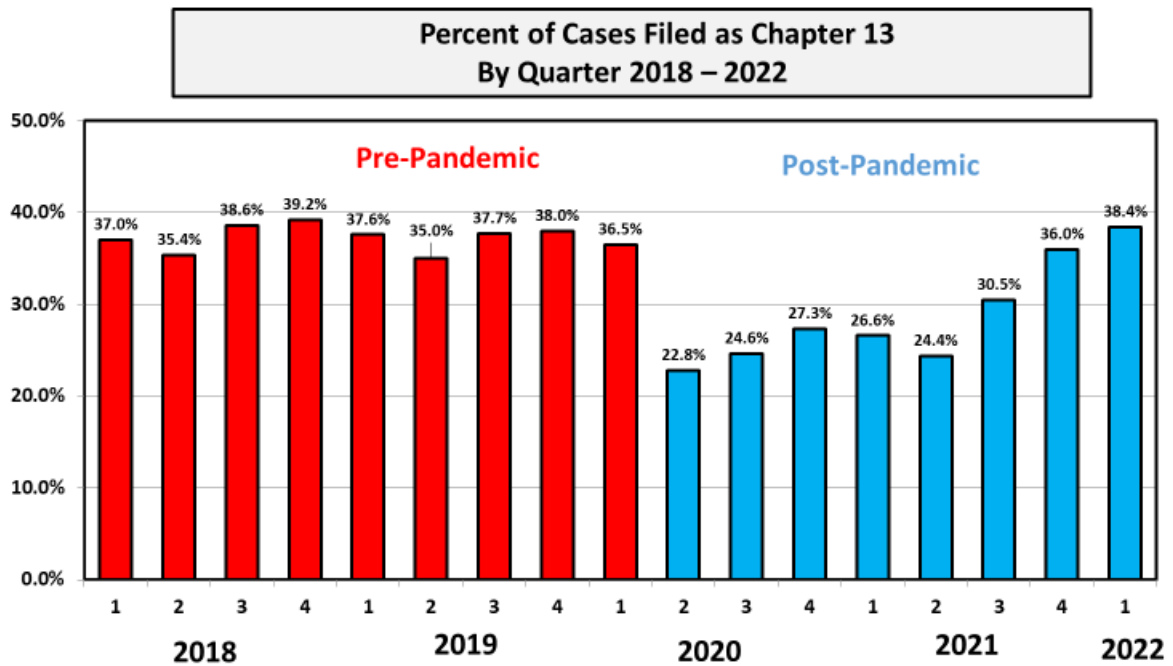
The 142 chapter 11 filings last week represented the third-highest weekly total in the last year. However, half of these cases were related filings by subsidiaries of power-producer Talen Energy Supply, which filed on May 9 in the Southern District of Texas. Excluding related cases, chapter 11 filings were about the same as during the last two years, and well below the volume filed during the same week in 2019 (pre-pandemic).

Types of Chapter 11 Cases Filed				
	May 9 - 15			
	2022	2021	2020	2019
Total Filed	142	65	188	162
Solo Cases	51	58	49	80
Parent Cases	6	3	10	12
Child Cases	85	4	129	70
<i>Filed By Individuals</i>	12	18	21	34
Subchapter V Cases	26	27	29	N/A

In addition to Talen Energy Supply, the other large chapter 11 case filing during the week was by Parateum Corp., a telecommunications company that filed in the Southern District of New York on May 15 along with eight related entities.

Chapter 13 Filing Patterns and the Pandemic

Prior to the pandemic, chapter 13 cases accounted for between 35 and 40 percent of all bankruptcy filings each quarter. After the onset of the pandemic, the chapter 13 proportion dropped sharply until mid-2021, likely due to state and federal moratoriums on foreclosures. As these protections have expired, the percentage of cases filed as chapter 13 have returned to historic norms.



See ABI's Newsroom for the latest on efforts to increase the subchapter V debt limit, and other news of interest to bankruptcy, at www.abi.org/newsroom.