

Bankruptcy Filing Trends in Alabama



Prepared by: **The American Bankruptcy Institute**

<http://www.abi.org/>



AMERICAN
BANKRUPTCY
INSTITUTE

Updated
February 2021

Alabama



State at a Glance		
	Alabama	National
Population (7/1/2019)	4,903,185	328,239,523
- Change since 2010	2.6%	6.3%
- Foreign Born	3.5%	13.6%
Size (Square Miles)	50,645	3,531,905
Median Household Income	\$50,536	\$62,843
Persons per Household	2.55	2.62
Per Capita Income	\$27,928	\$34,103
Median Home Value	\$142,700	\$217,500
Homeownership Rate	68.8%	64.0%
High School Graduate (or Higher)	86.2%	88.0%
College Graduate (or Higher)	25.5%	32.1%
Disabled	11.6%	8.6%
No Health Insurance	11.7%	9.5%
In Poverty	15.5%	10.5%
Source: U.S. Census Bureau January 2021		

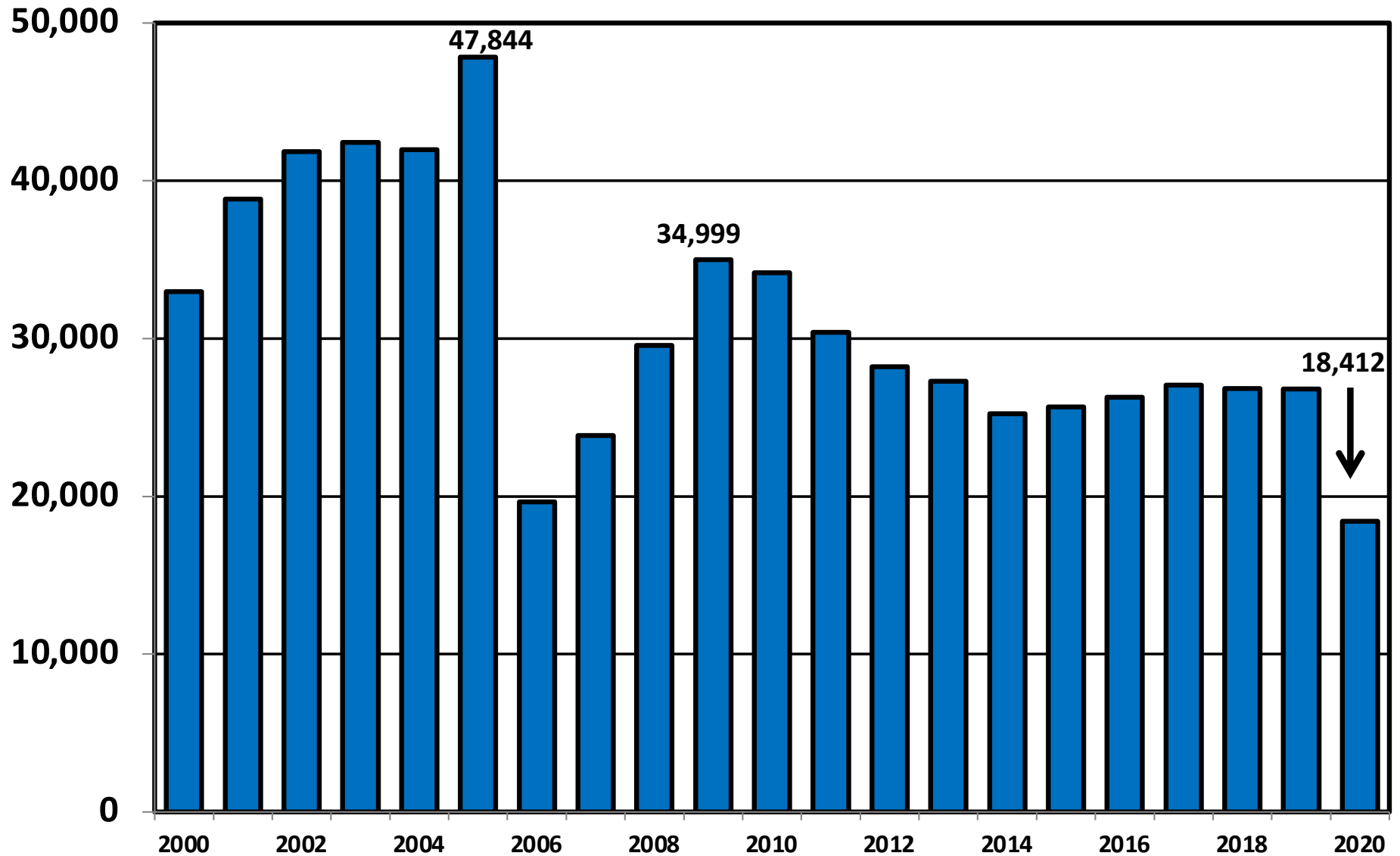
Bankruptcy Filings in Alabama

Calendar Years 2000 - 2020

Year	Total	Chapter 7	Chapter 11	Chapter 13	Other Cases
2000	32,988	13,213	124	19,645	6
2001	38,849	17,425	151	21,269	4
2002	41,859	19,968	160	21,726	5
2003	42,421	20,616	157	21,643	5
2004	41,972	20,395	133	21,443	1
2005	47,844	28,449	135	19,258	2
2006	19,639	6,651	82	12,903	3
2007	23,856	8,262	104	15,480	10
2008	29,557	11,029	172	18,349	7
2009	34,999	14,677	221	20,091	10
2010	34,163	14,660	184	19,304	15
2011	30,394	11,892	164	18,321	17
2012	28,207	10,659	109	17,433	6
2013	27,290	10,212	102	16,970	6
2014	25,248	9,305	80	15,860	3
2015	25,672	9,257	98	16,313	4
2016	26,269	9,524	50	16,691	4
2017	27,042	9,804	68	17,164	6
2018	26,846	9,570	67	17,204	5
2019	26,809	9,581	64	17,159	5
2020	18,412	7,994	75	10,335	8

Total Bankruptcy Cases Filed in Alabama

Calendar Years 2000 - 2020



Total Filings Relative to Population 2000 - 2020



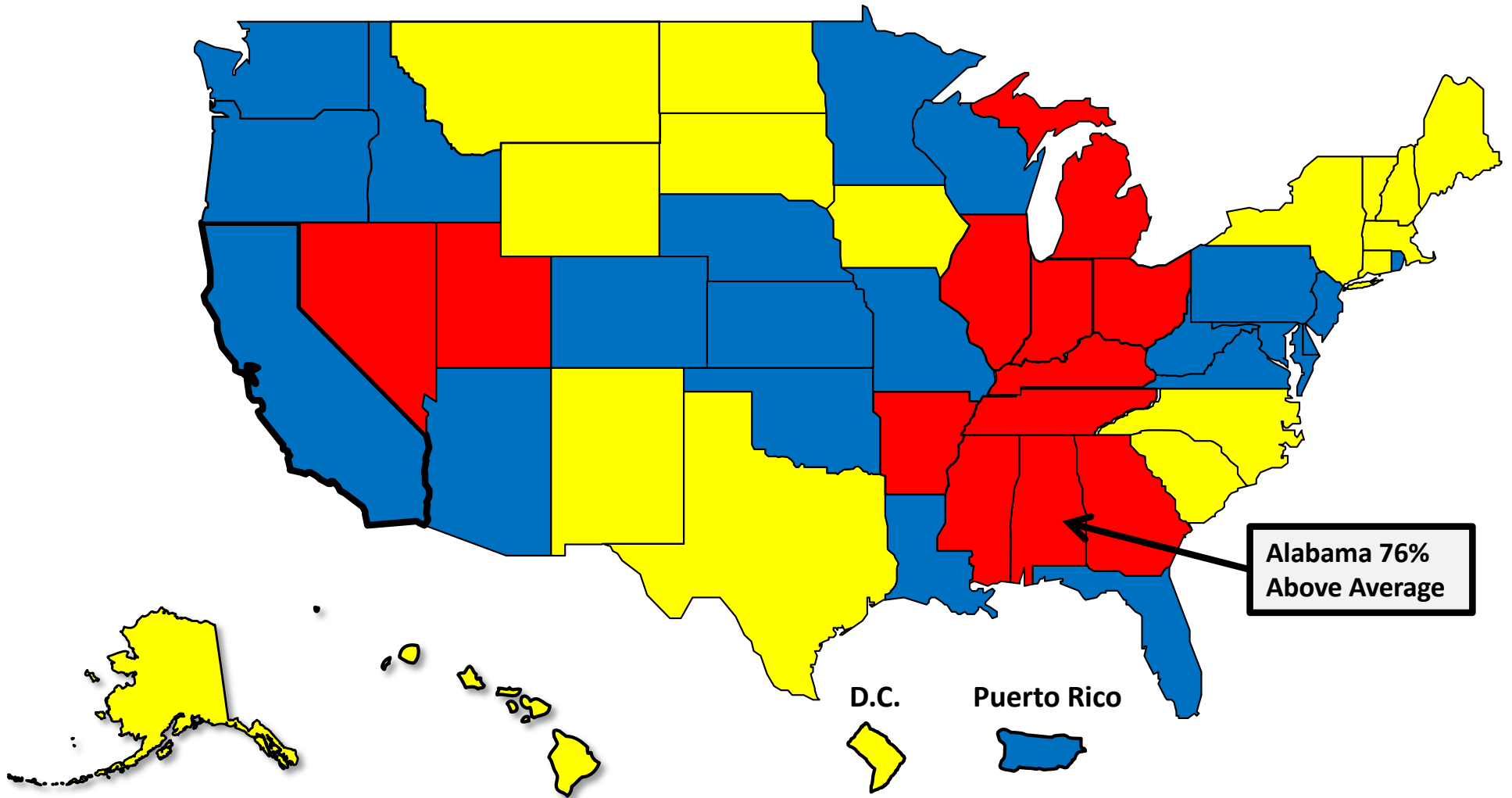
More than 25%
Above Average



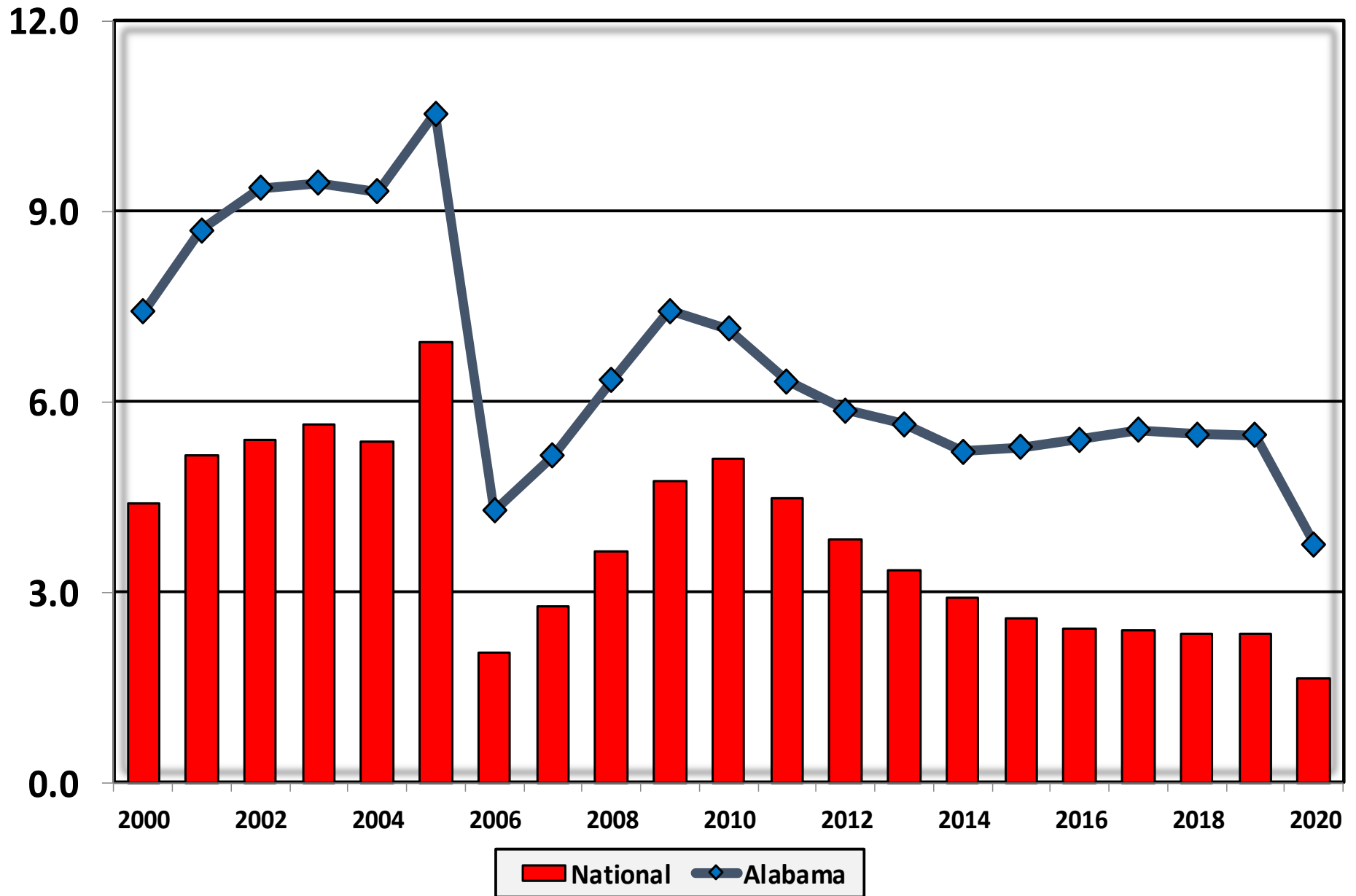
Within 25%
of Average



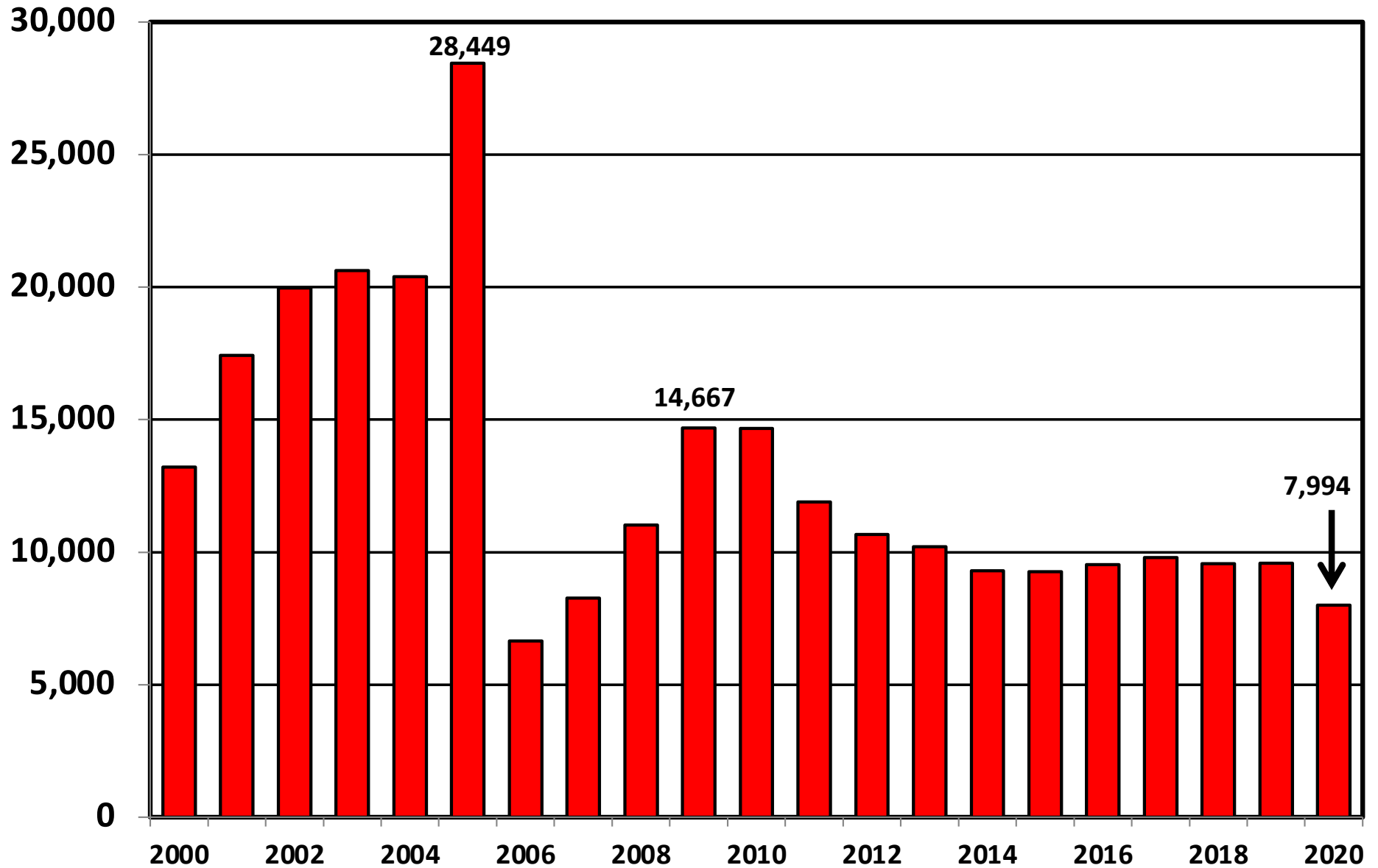
More than 25%
Below Average



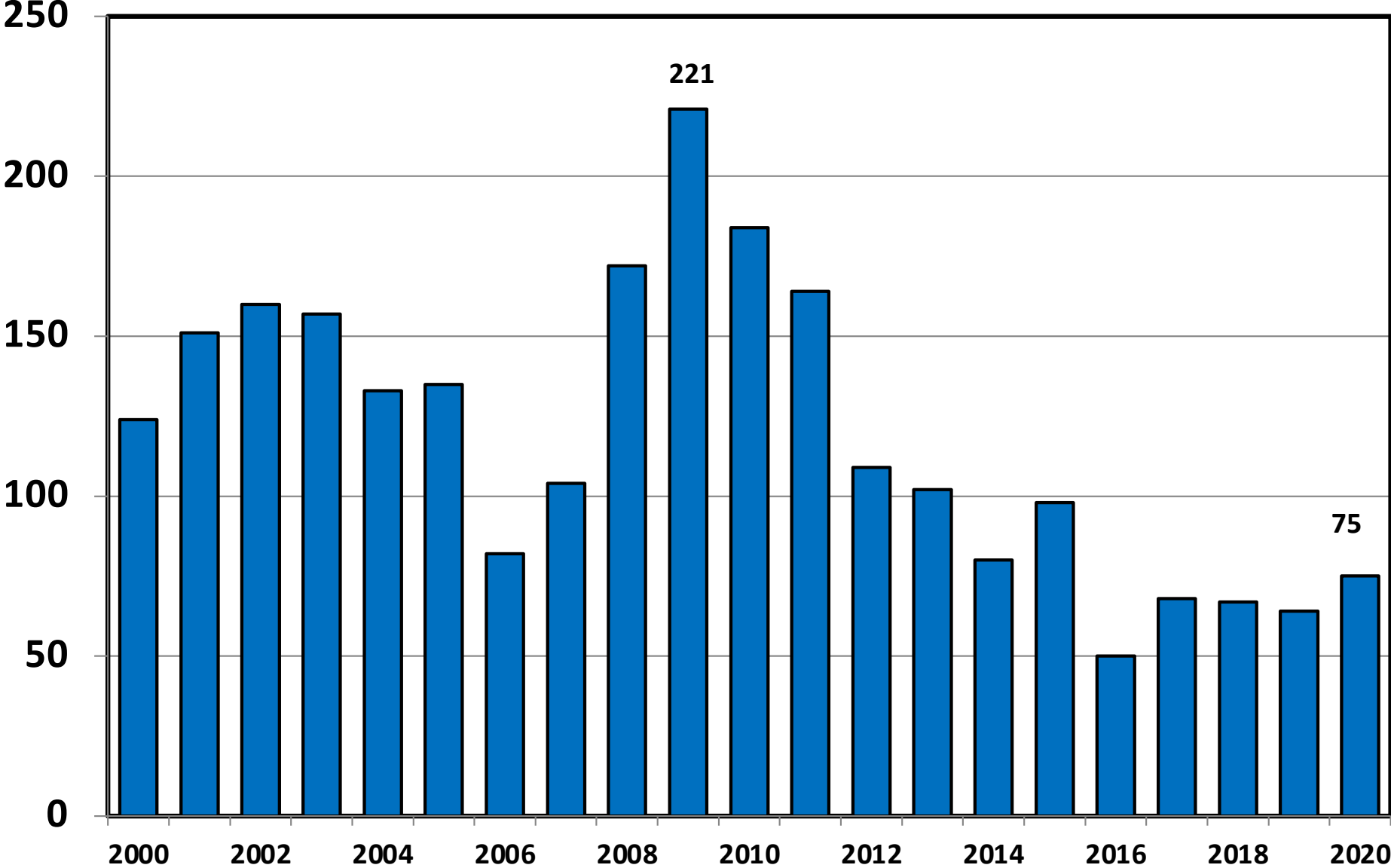
Bankruptcy Filings per 1,000 Population Alabama vs. National Average 2000 - 2020



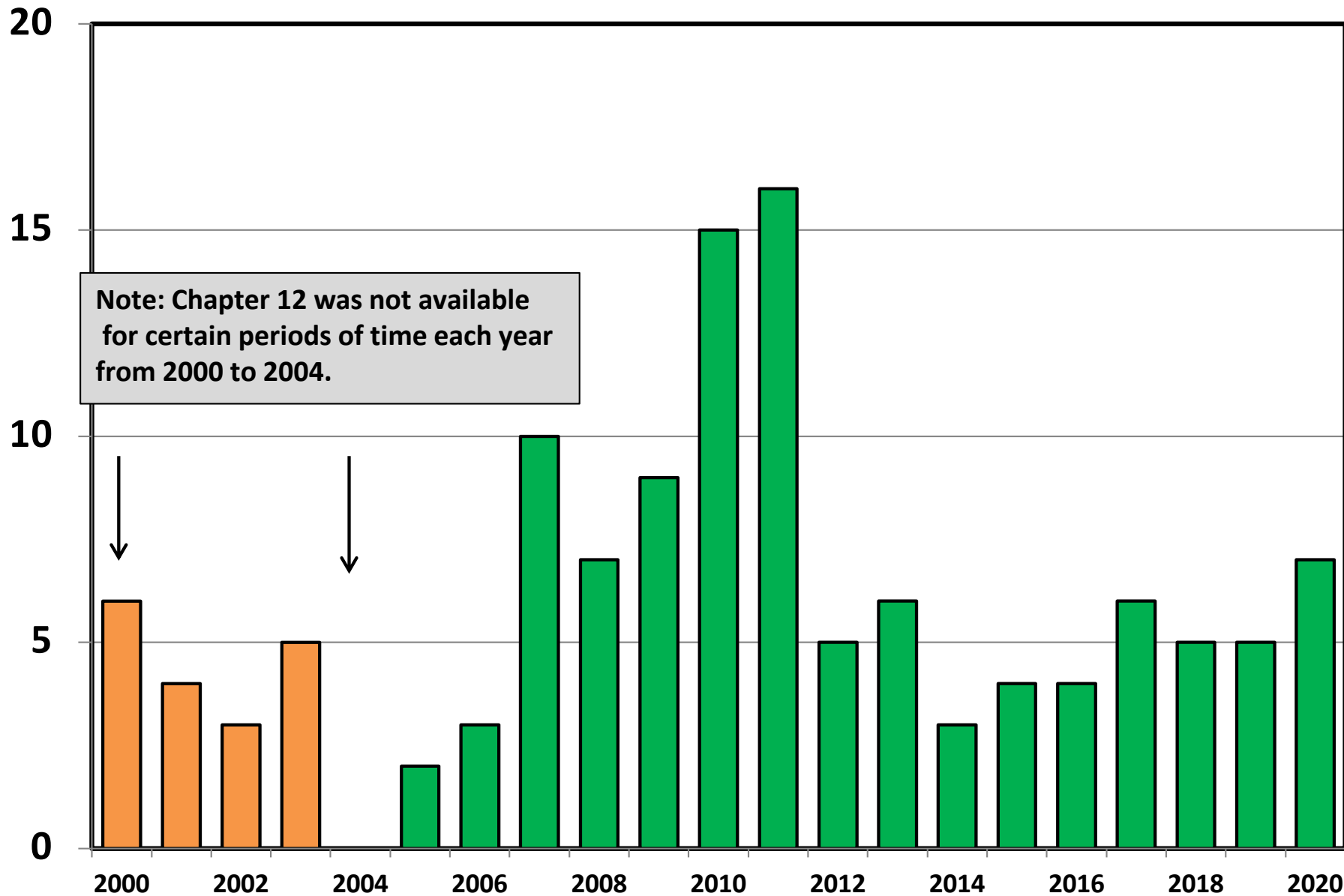
Chapter 7 Cases Filed In Alabama Calendar Years 2000 - 2020



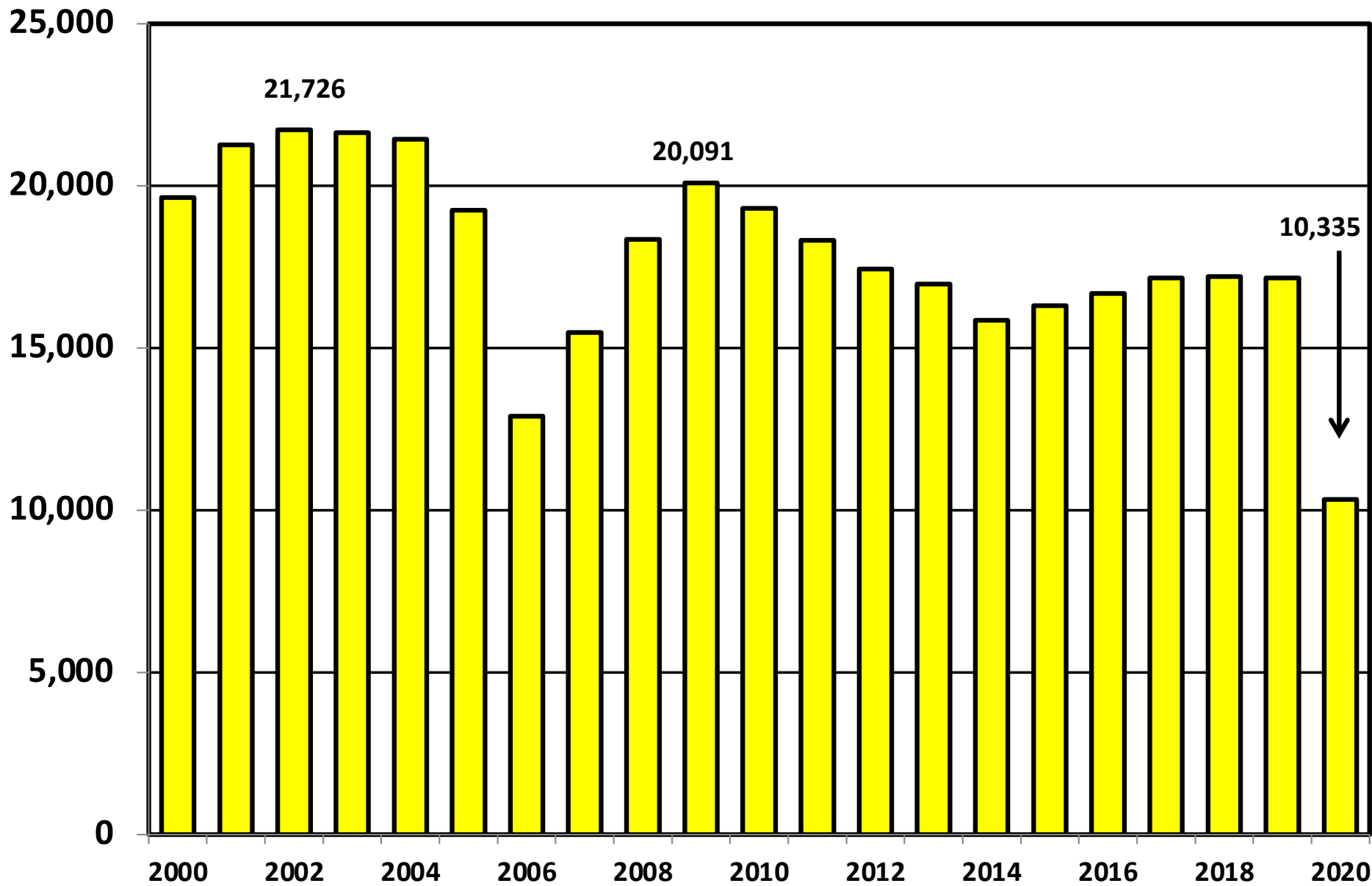
Chapter 11 Cases Filed in Alabama 2000 - 2020



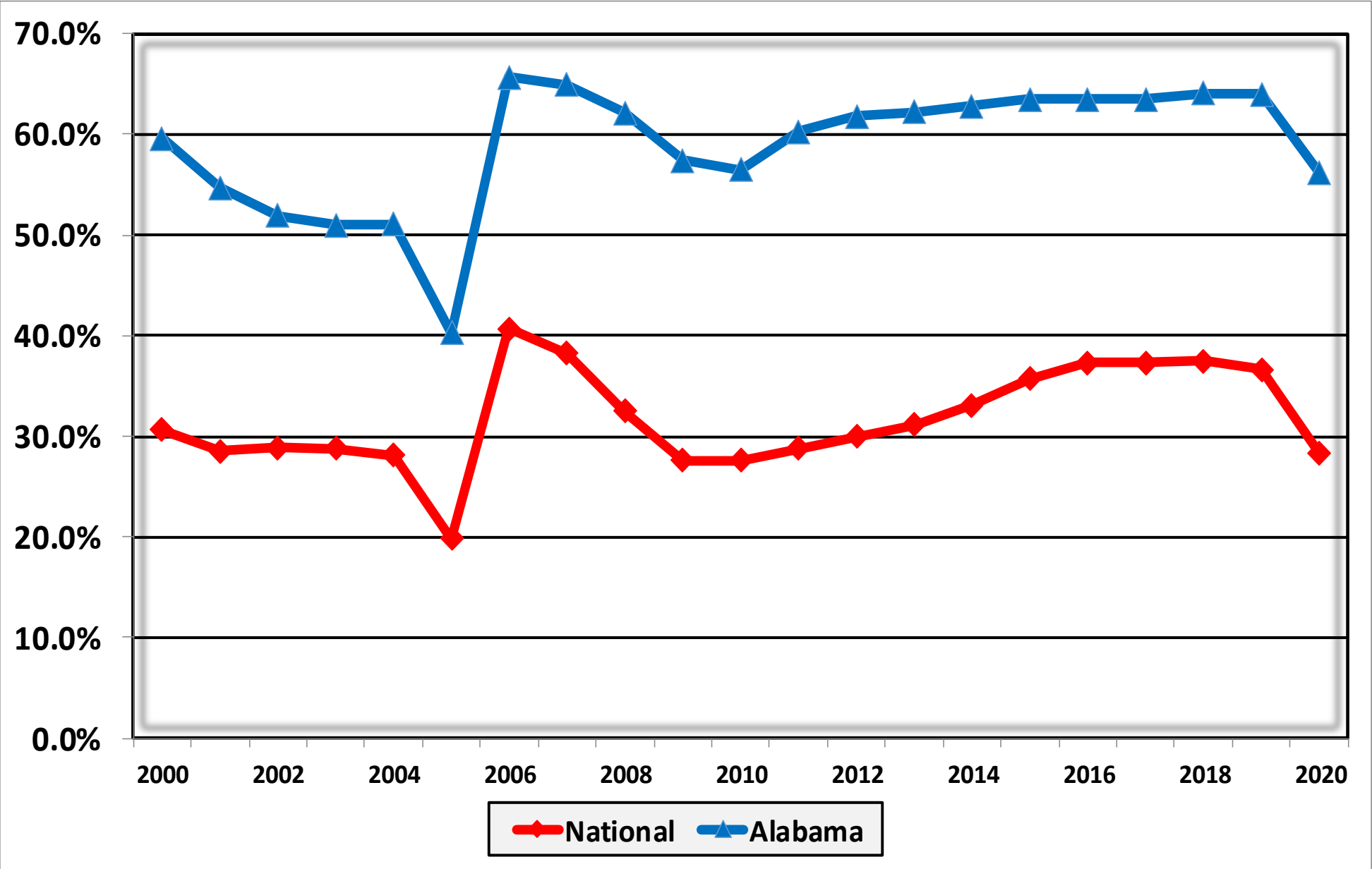
Chapter 12 Cases Filed in Alabama 2000 - 2020



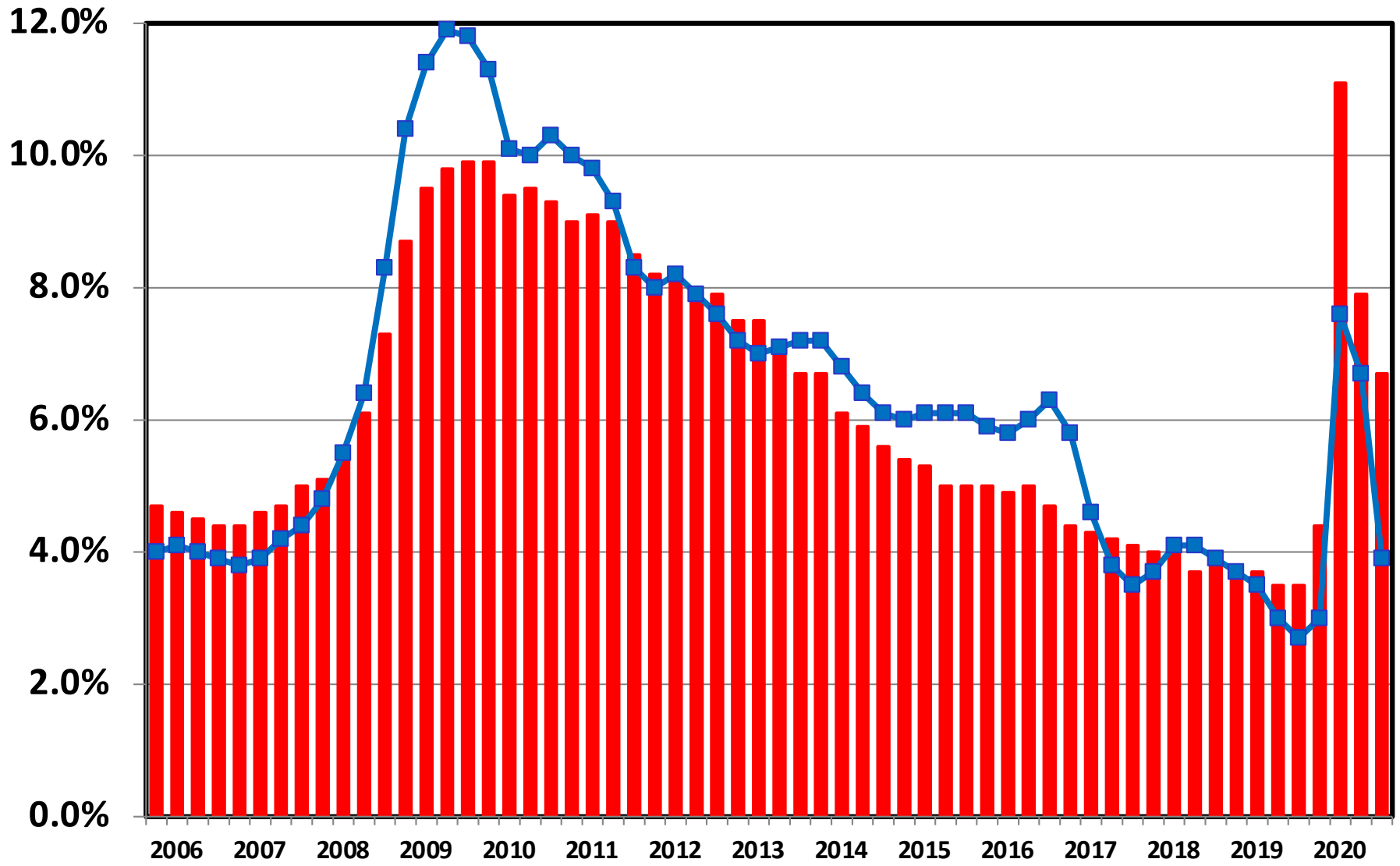
Chapter 13 Cases Filed in Alabama 2000 - 2020



**Percent of Cases Filed as Chapter 13
Calendar Years 2000 - 2020**



Unemployment Rate By Quarter 2006 - 2020



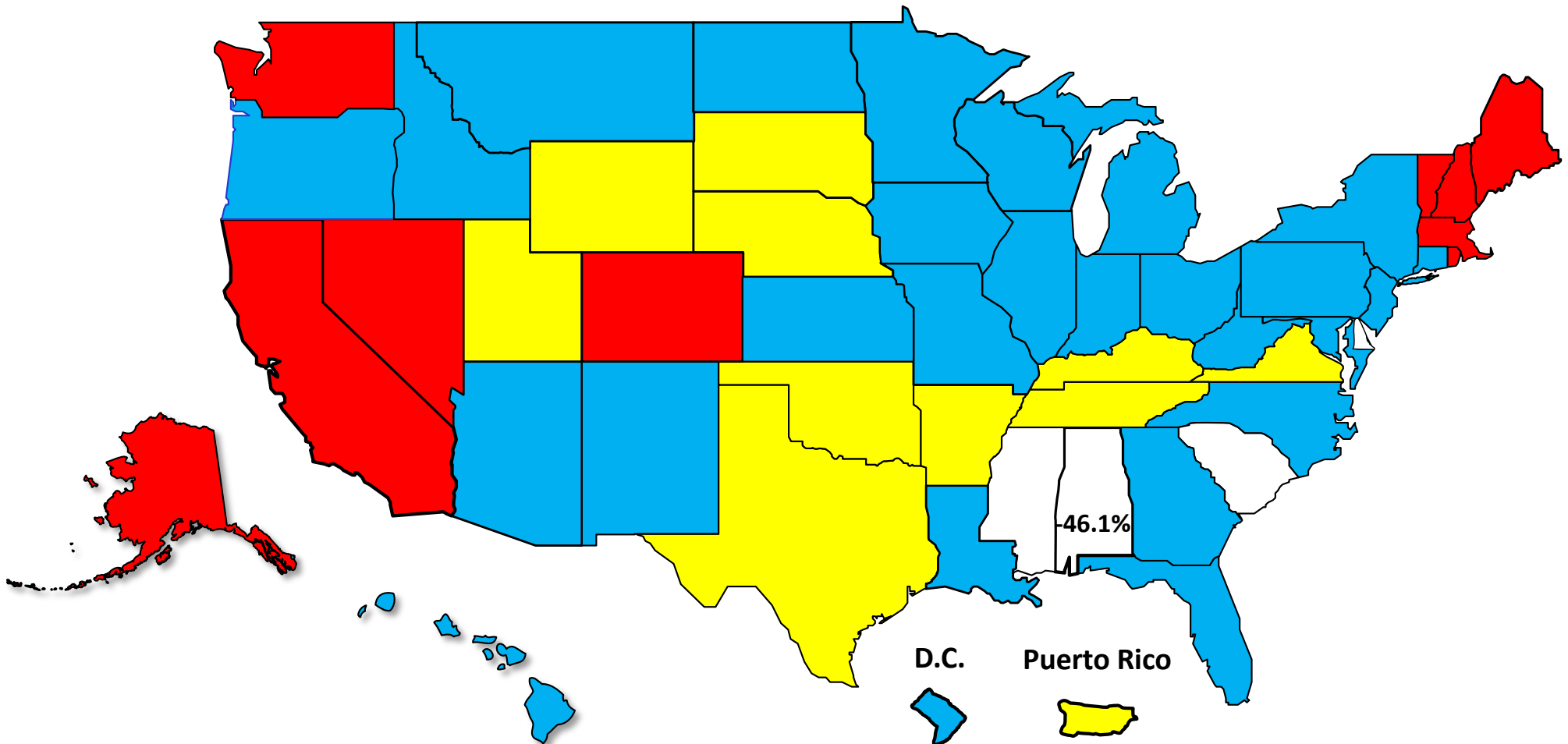
■ National ■ Alabama

Source: Bureau of Labor Statistics

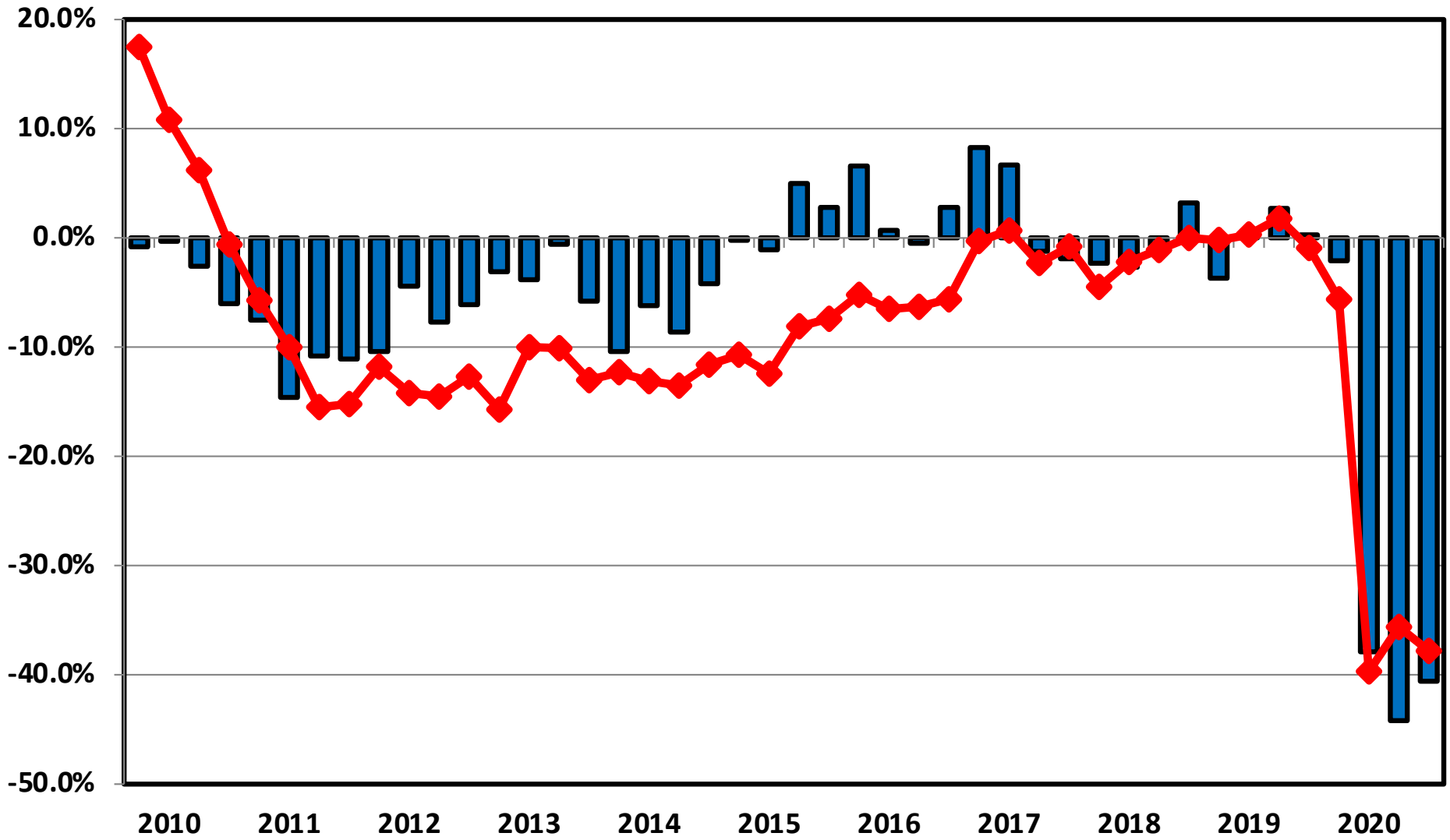
Percent Change in Total Filings Calendar Year 2020 Compared to 2010

(National Average = 65.8% Decrease)

Amount of Decrease



**Filing Trends By Quarter Alabama vs. National Average
(Percent Change From Same Quarter One Year Prior)**



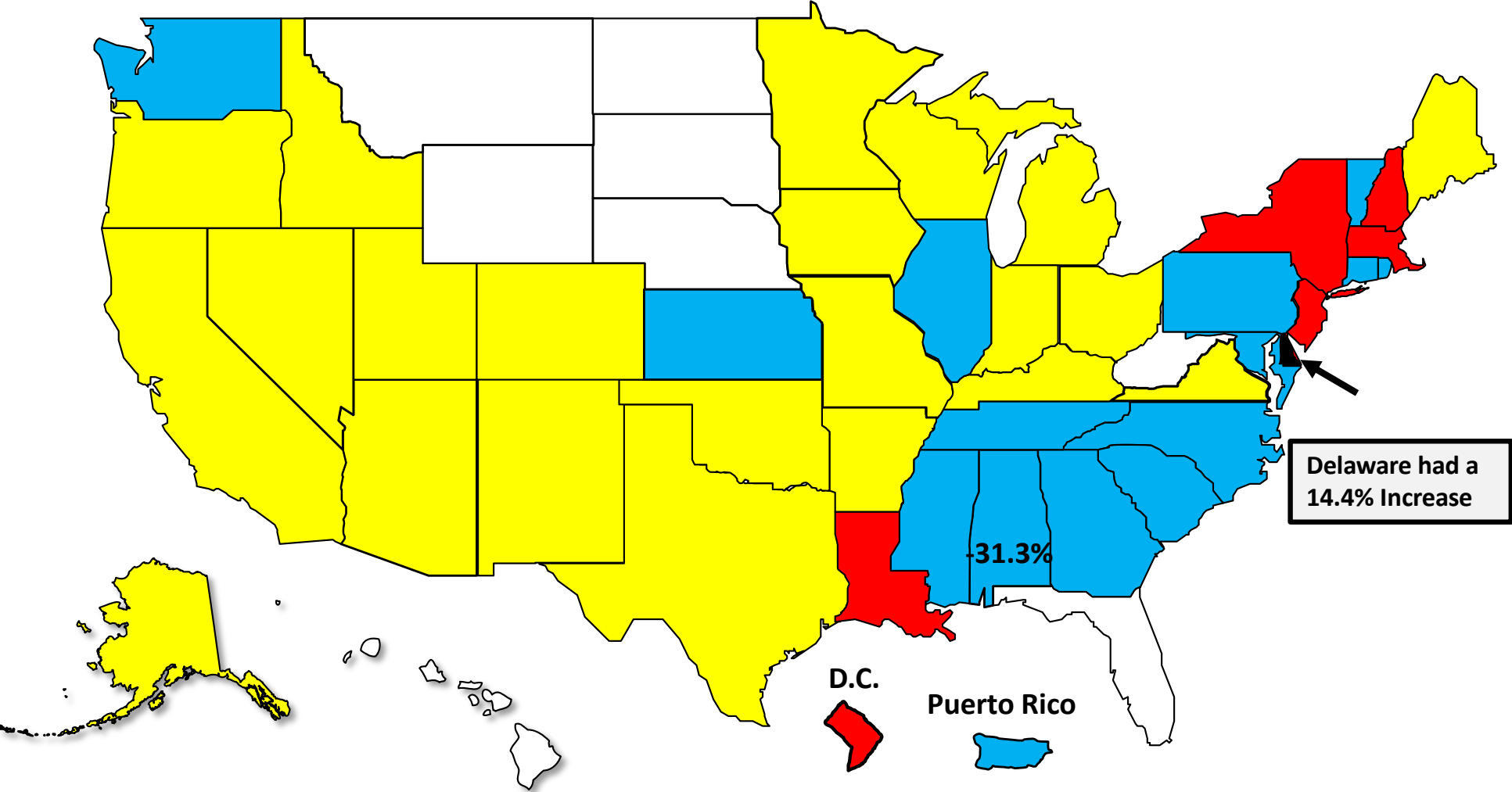
Alabama National

Bankruptcy Filing Trends

Calendar Year 2020 vs. 2019

National Average = 29.7 % Decrease

- Decline Under 20%
- Decline 20% – 30%
- Decline 30% - 40%
- Decline Over 40%





AMERICAN
BANKRUPTCY
INSTITUTE

www.abi.org