

Bankruptcy Filing Trends in Alaska



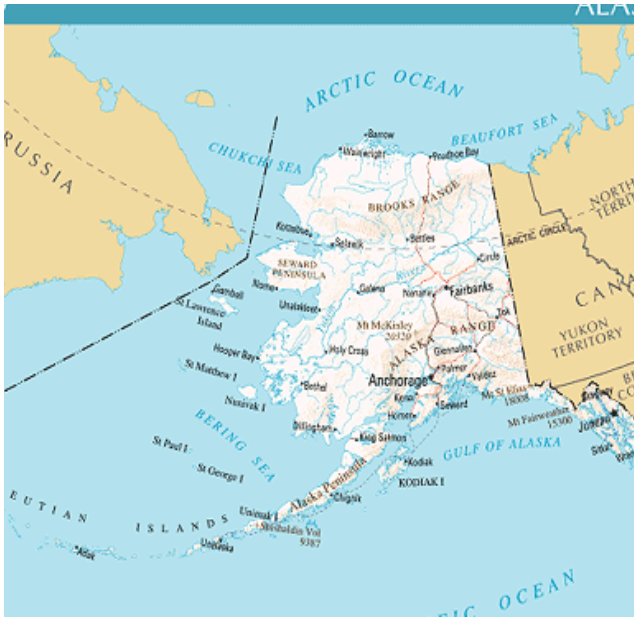
AMERICAN
BANKRUPTCY
INSTITUTE

Prepared by: **The American Bankruptcy Institute**

<http://www.abi.org/>

Updated
February 2021

Alaska



State at a Glance		
	Alaska	National
Population (7/1/2019)	731,545	328,239,523
- Change since 2010	3.0%	6.3%
- Foreign Born	7.8%	13.6%
Size (Square Miles)	570,641	3,531,905
Median Household Income	\$77,640	\$62,843
Persons per Household	2.80	2.62
Per Capita Income	\$36,787	\$34,103
Median Home Value	\$270,400	\$217,500
Homeownership Rate	64.3%	64.0%
High School Graduate (or Higher)	92.8%	88.0%
College Graduate (or Higher)	29.6%	32.1%
Disabled	8.9%	8.6%
No Health Insurance	13.9%	9.5%
In Poverty	10.1%	10.5%
Source: U.S. Census Bureau January 2021		

Prepared by: The American Bankruptcy Institute

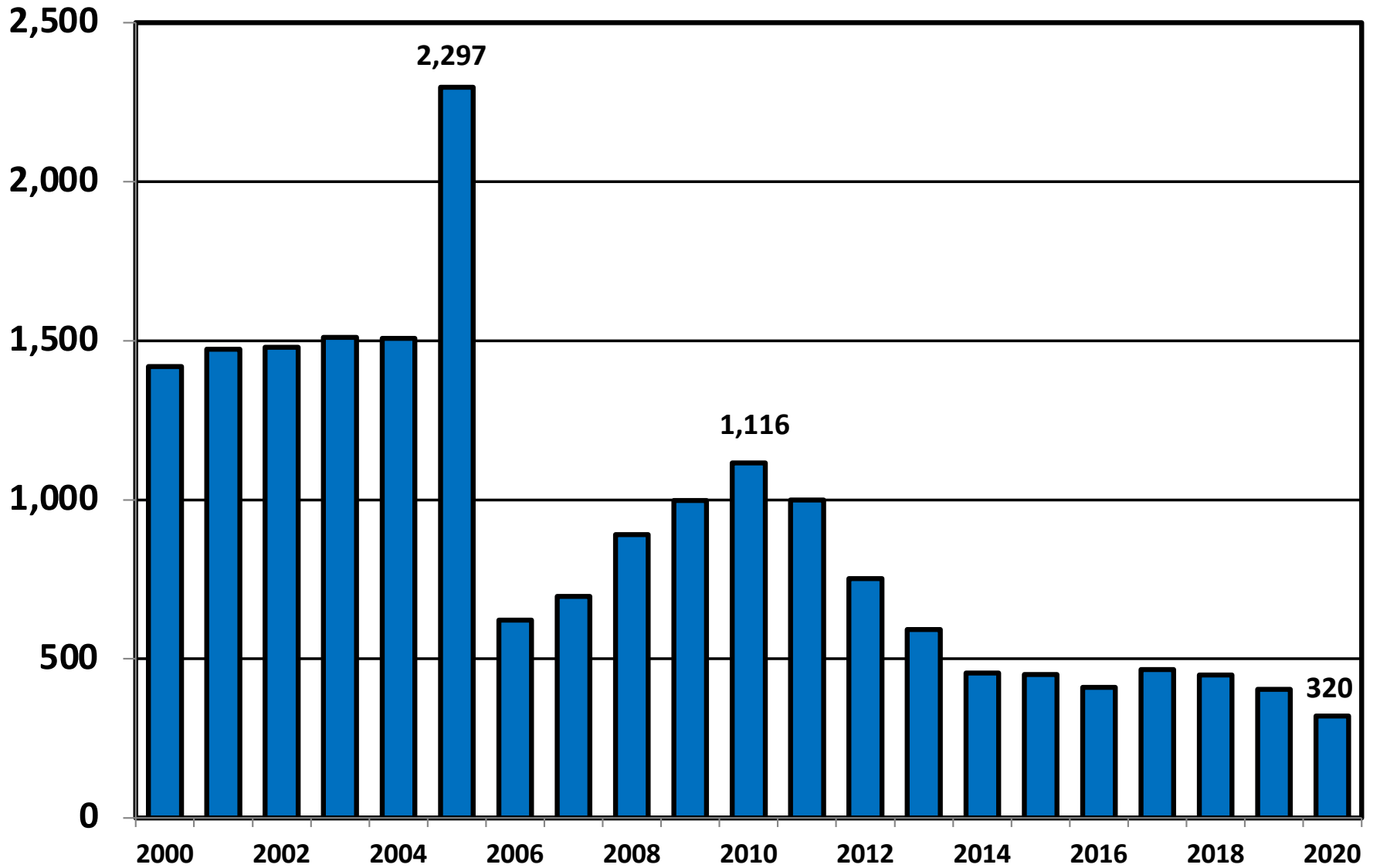
<http://www.abi.org>

**Bankruptcy Filings in Alaska
Calendar Years 2000 - 2020**

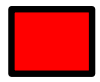
Year	Total	Chapter 7	Chapter 11	Chapter 13	Other Cases
2000	1,419	1,267	15	137	0
2001	1,473	1,317	18	138	0
2002	1,479	1,341	14	124	0
2003	1,510	1,362	18	130	0
2004	1,508	1,350	12	146	0
2005	2,297	2,129	11	156	1
2006	622	521	6	94	1
2007	697	564	15	118	0
2008	891	752	7	131	1
2009	998	825	21	151	1
2010	1,116	924	10	181	1
2011	999	839	5	155	0
2012	753	616	5	131	1
2013	593	476	6	100	11
2014	456	378	1	76	1
2015	451	362	19	70	0
2016	410	334	7	69	0
2017	467	370	7	86	4
2018	450	356	1	93	0
2019	404	316	8	80	0
2020	320	274	5	41	0

District of Alaska

Total Bankruptcy Cases Filed 2000 - 2020



Total Filings Relative to Population 2000 - 2020



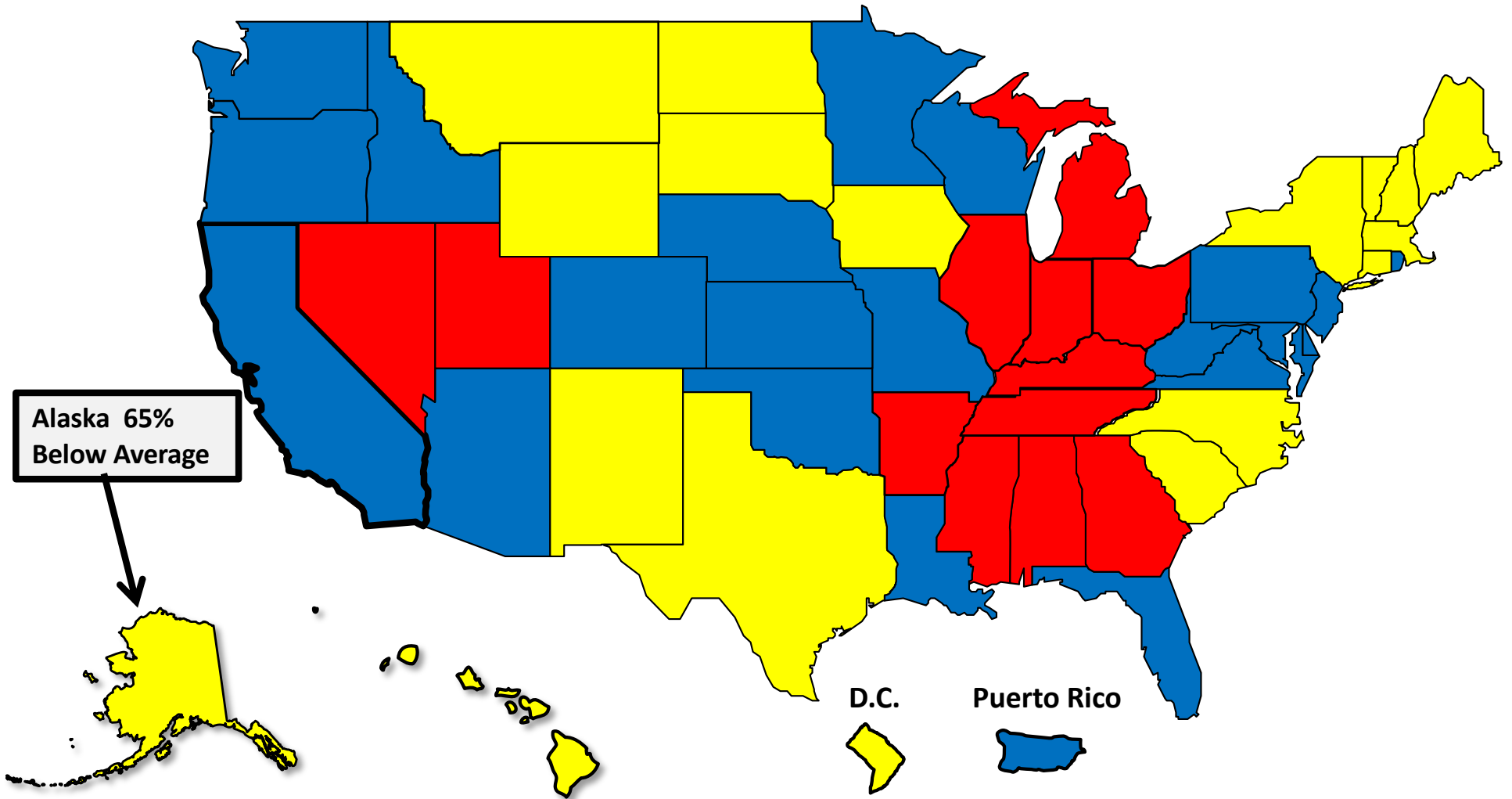
More than 25%
Above Average



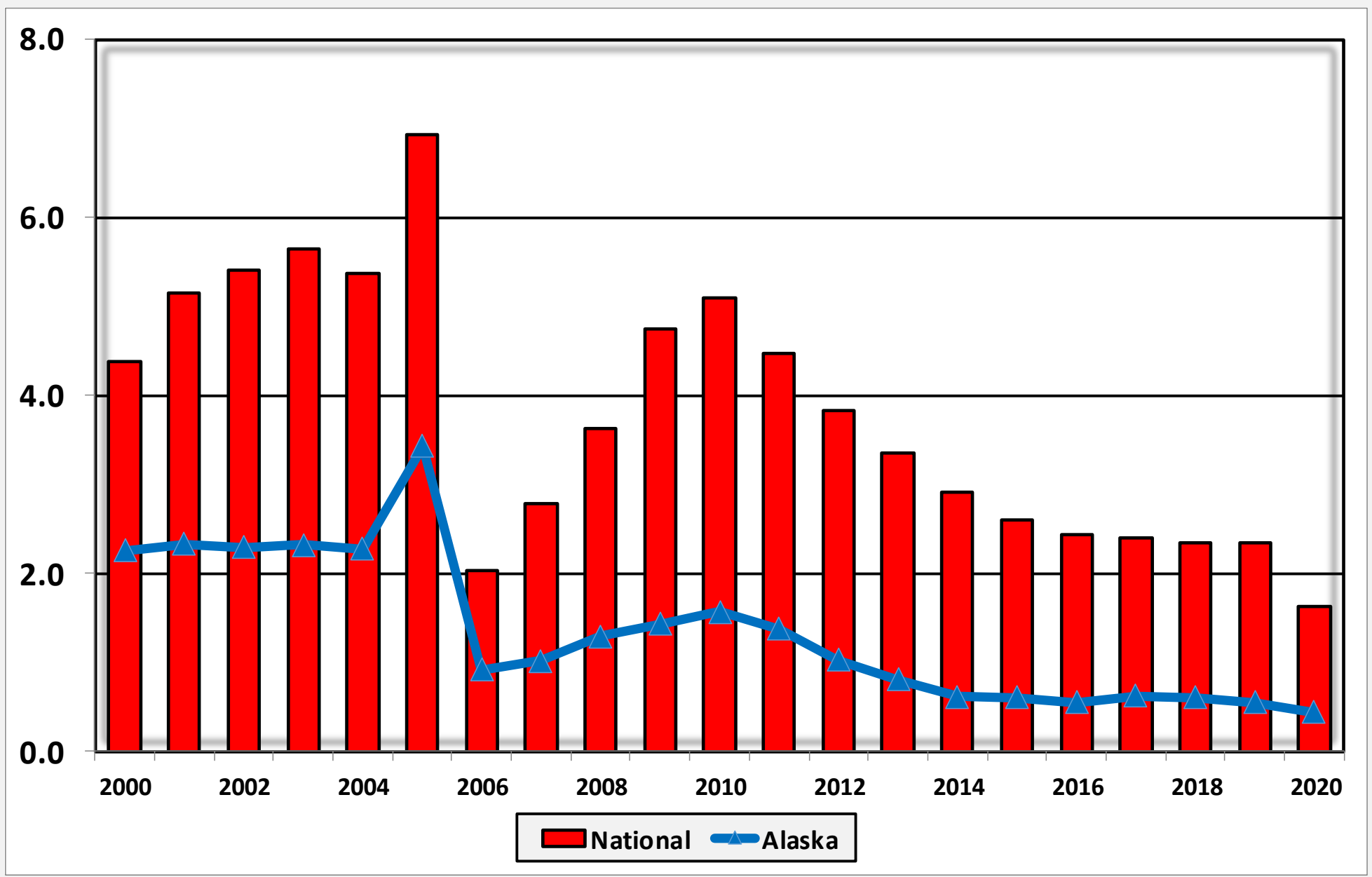
Within 25%
of Average



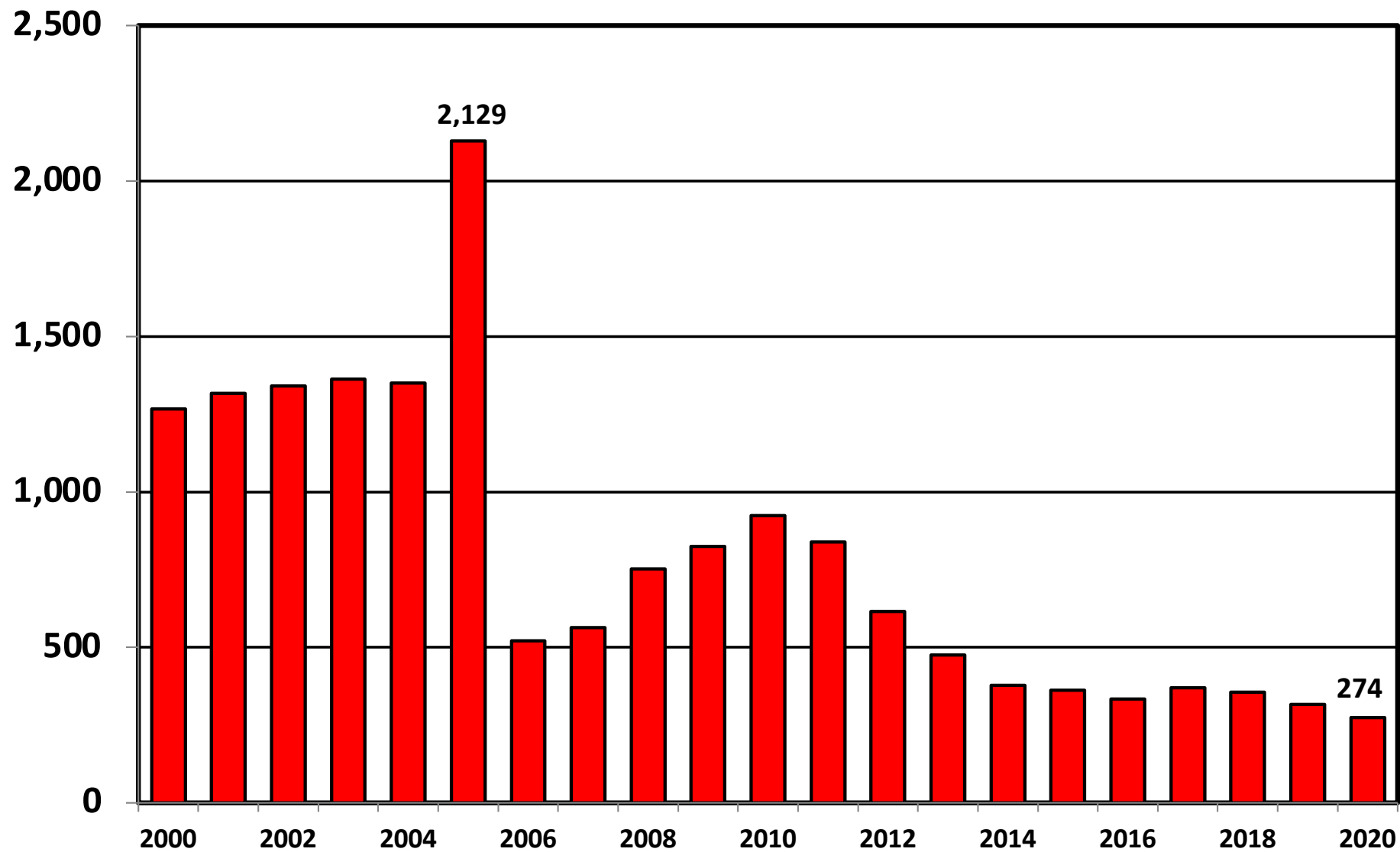
More than 25%
Below Average



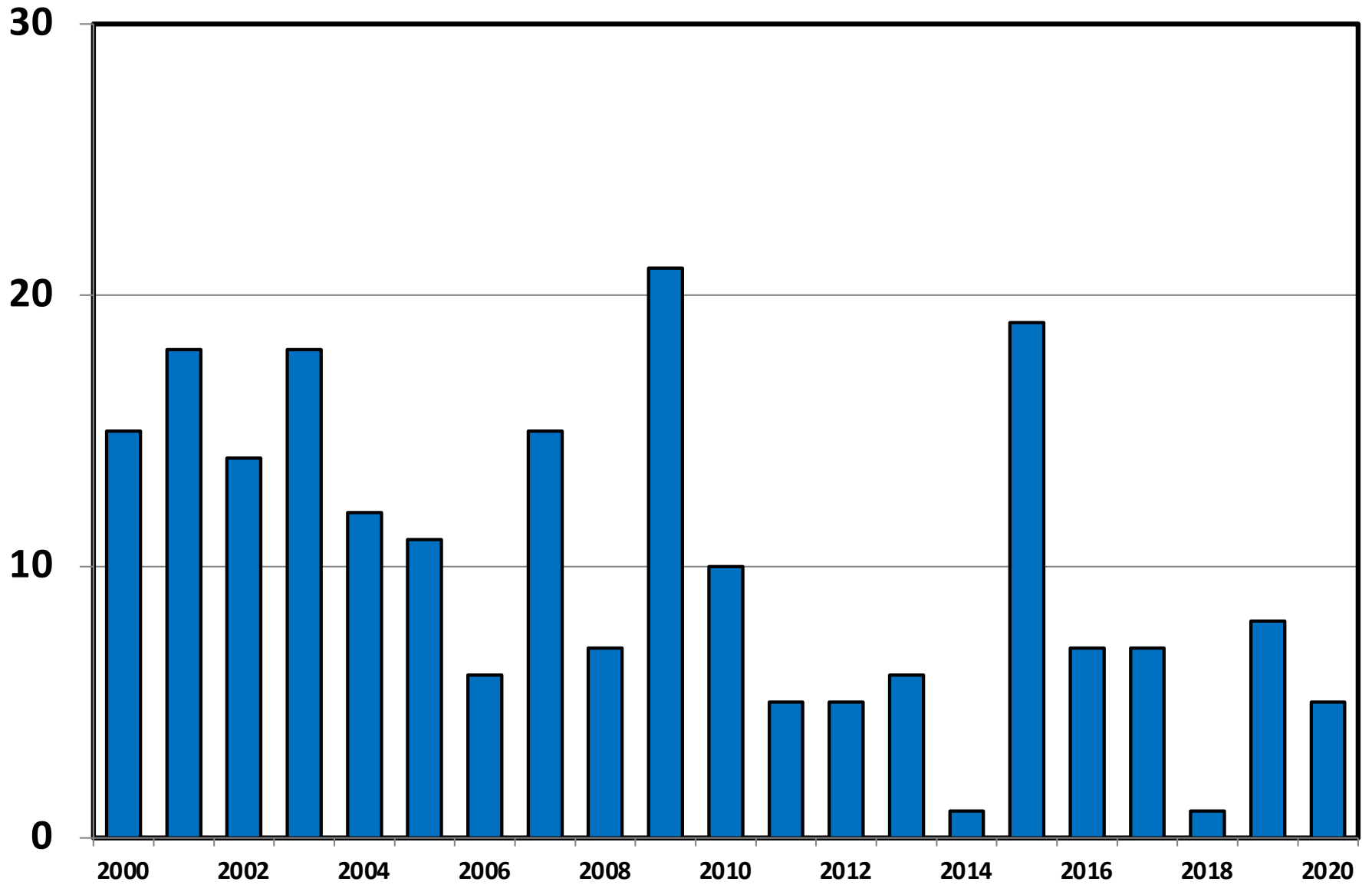
**Bankruptcy Filings per 1,000 Population
Alaska vs. National Average 2000 - 2020**



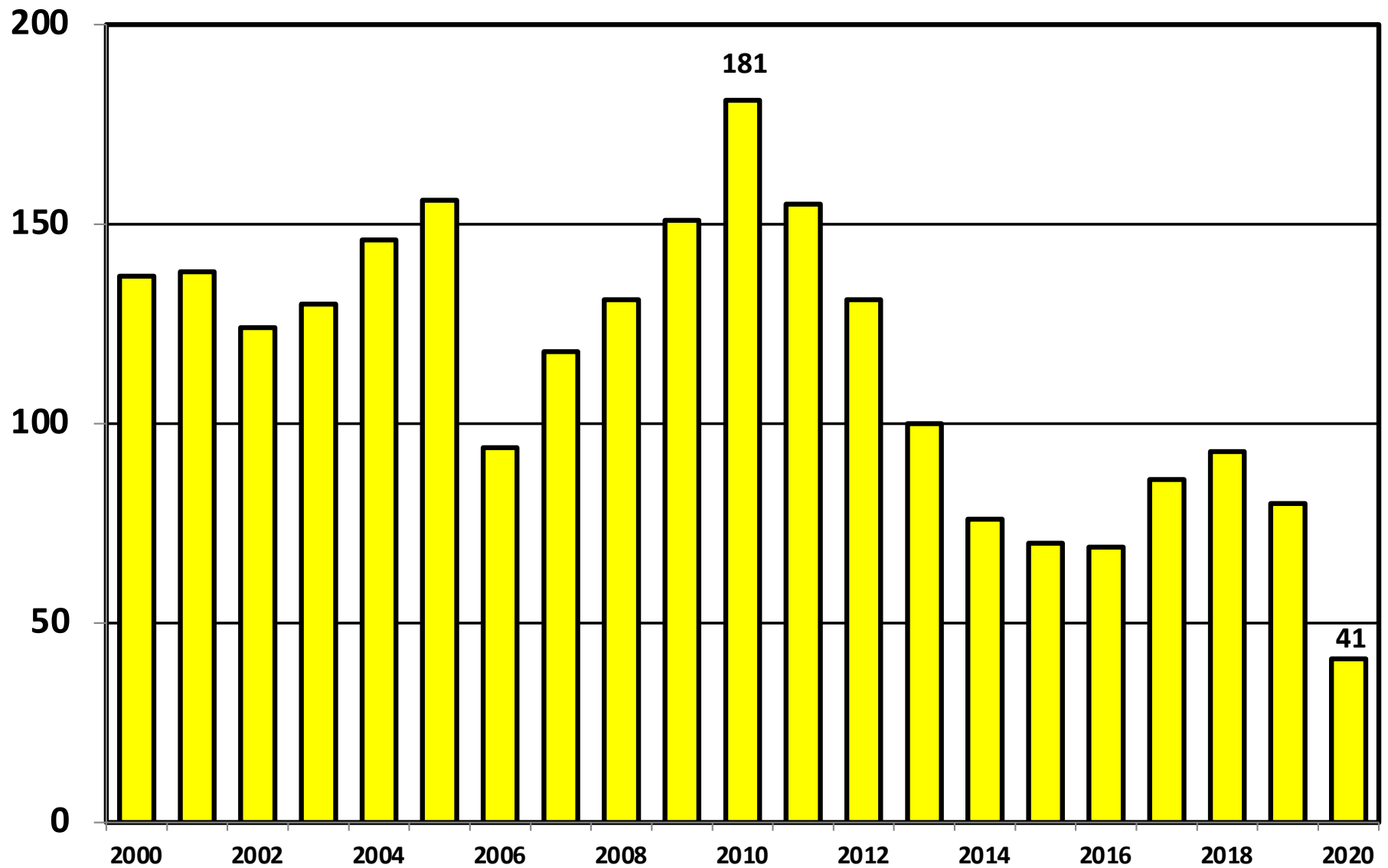
District of Alaska Chapter 7 Cases Filed 2000 - 2020



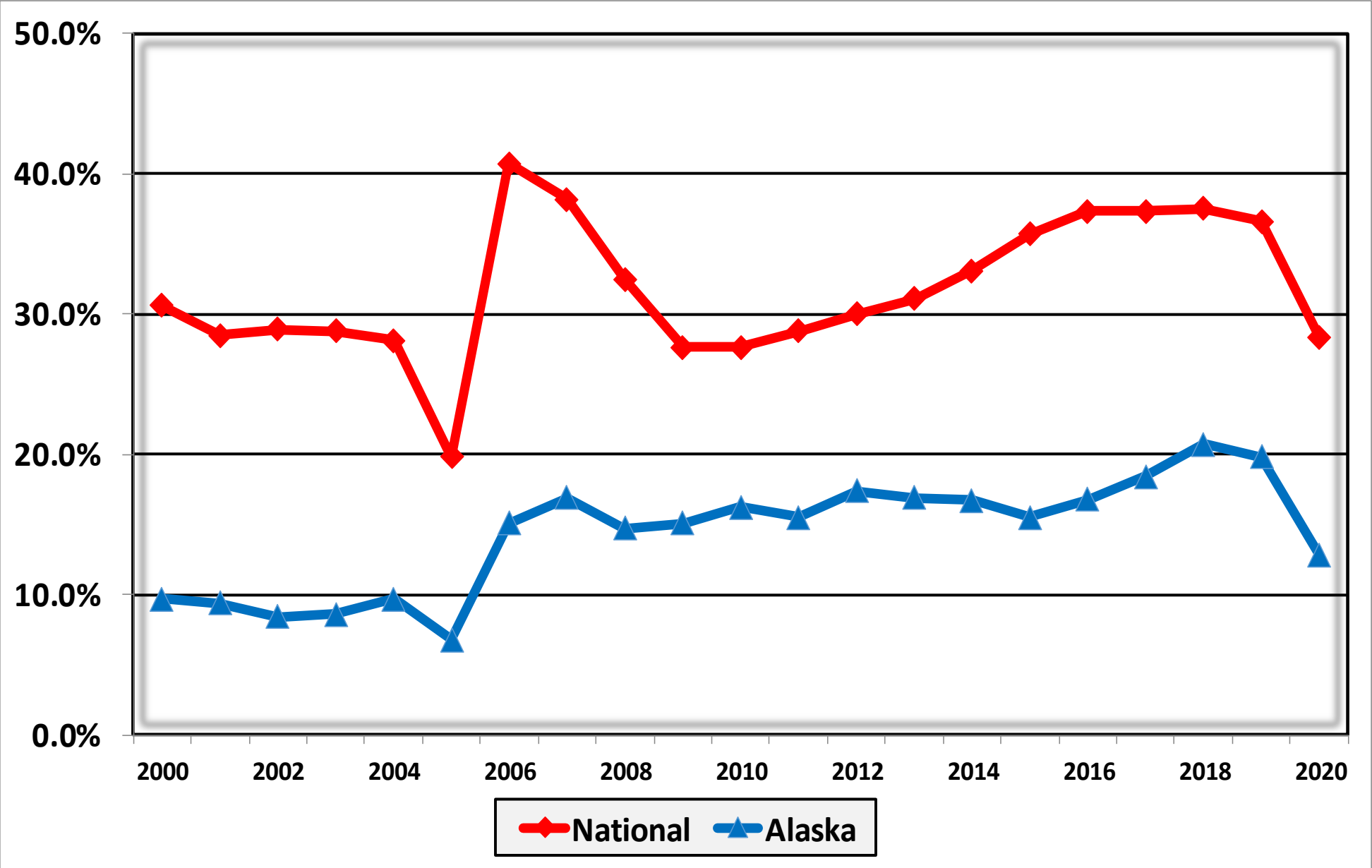
Chapter 11 Cases Filed in Alaska 2000 - 2020



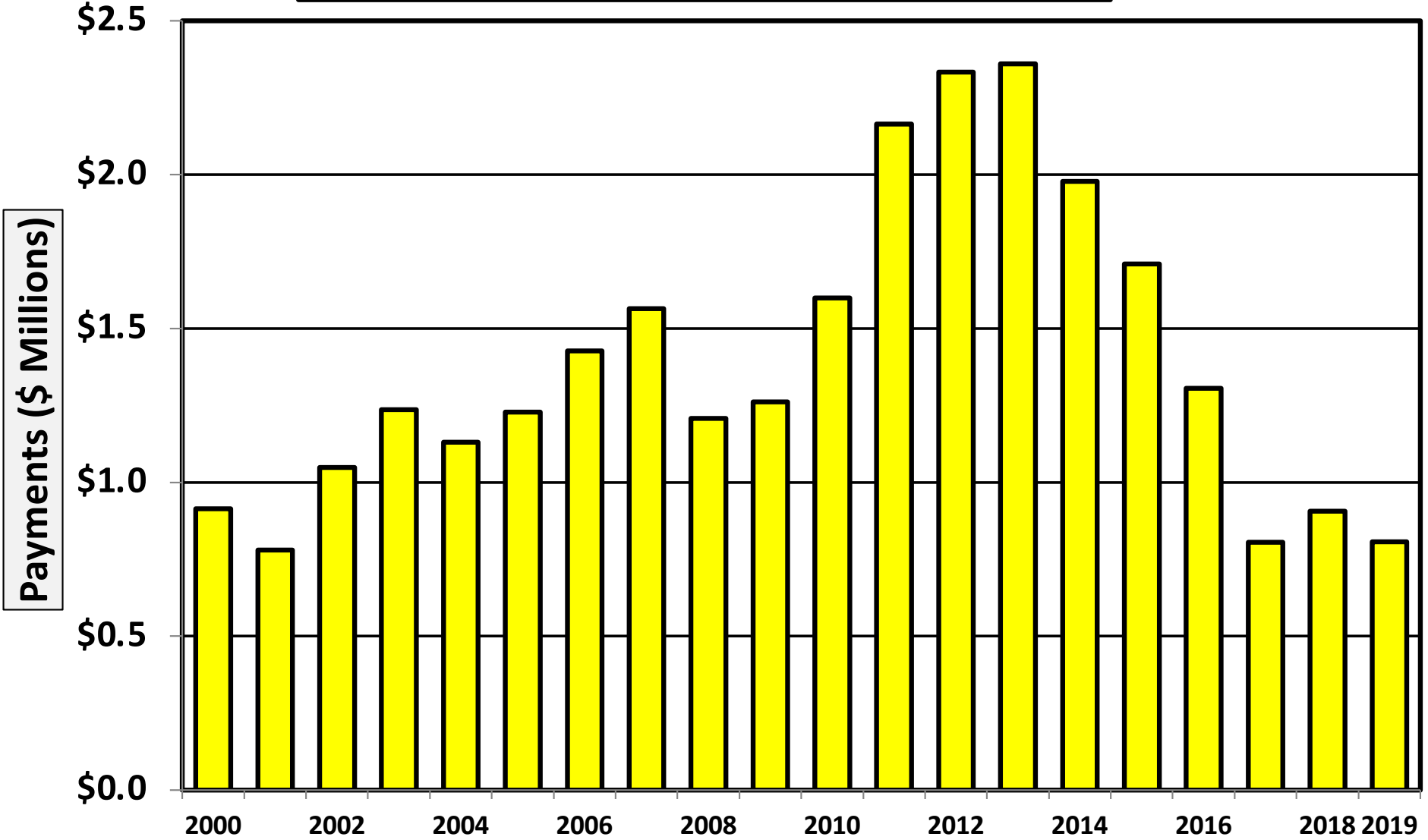
District of Alaska Chapter 13 Cases Filed 2000 - 2020



**Percent of Cases Filed as Chapter 13
Calendar Years 2000 - 2020**

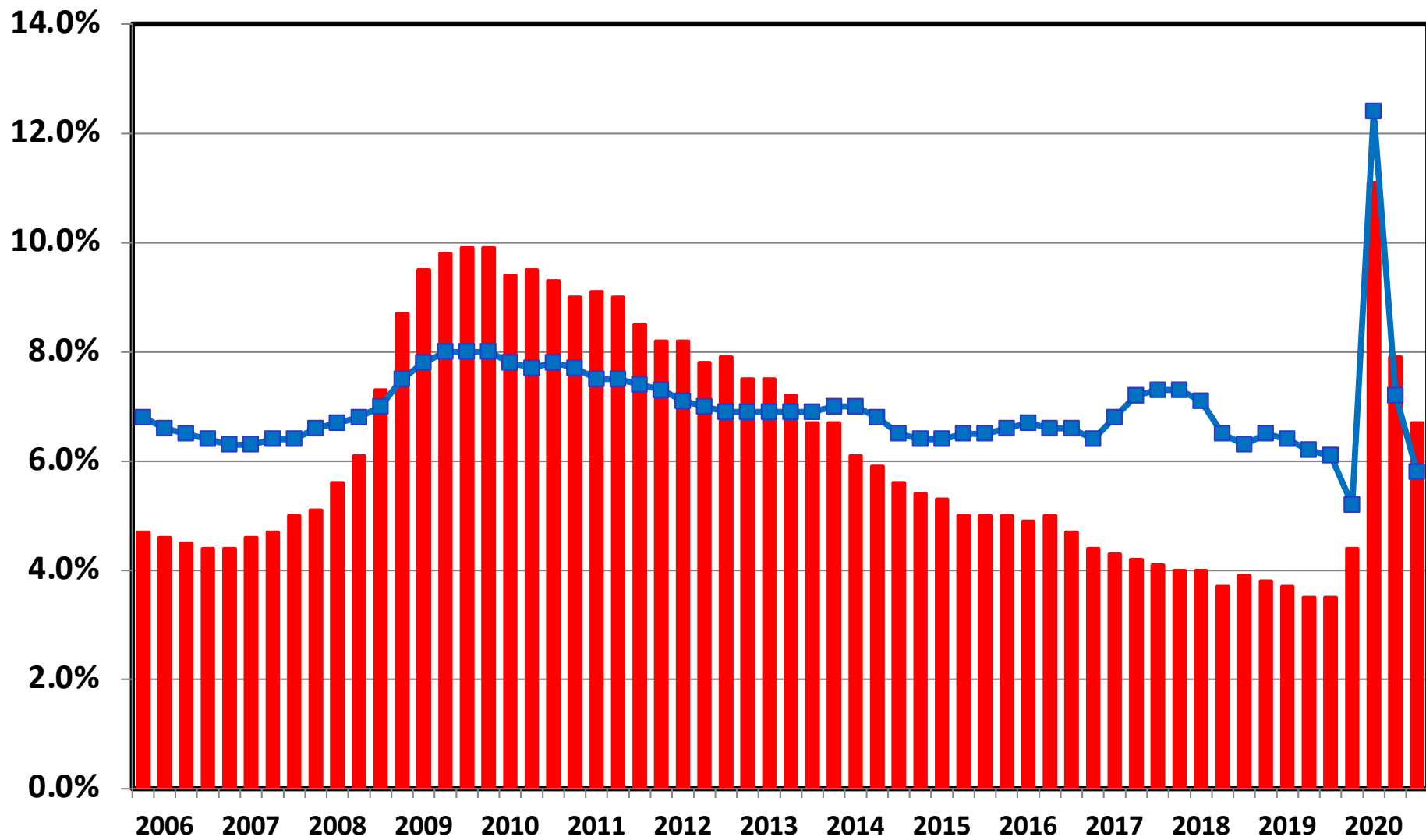


Chapter 13 Cases in Alaska
Amount (in Millions) Paid to Unsecured Creditors
Fiscal Years 2000 - 2019



Source: Executive Office for United States Trustees

Unemployment Rate By Quarter 2006 - 2020



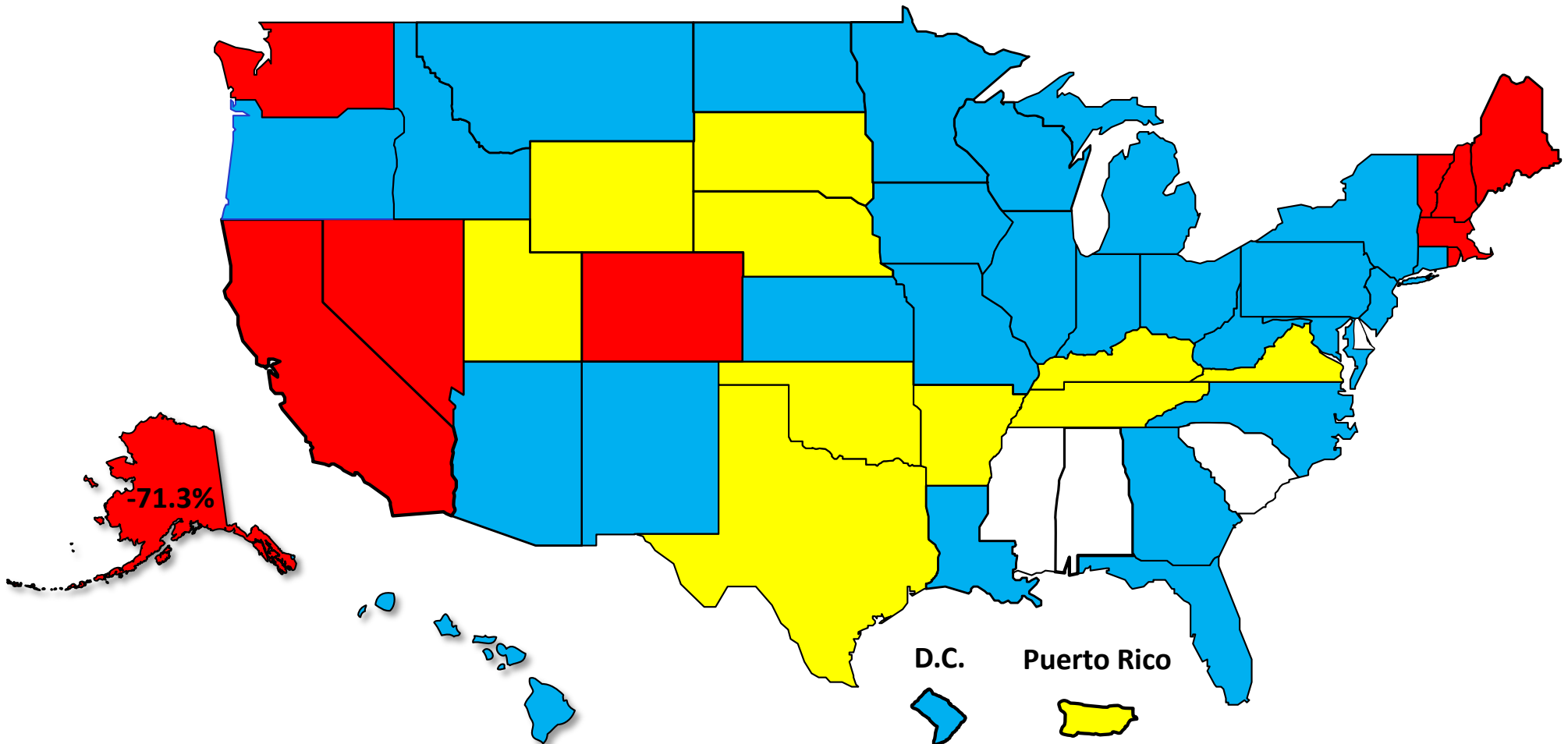
■ National **—■ Alaska**

Source: Bureau of Labor Statistics

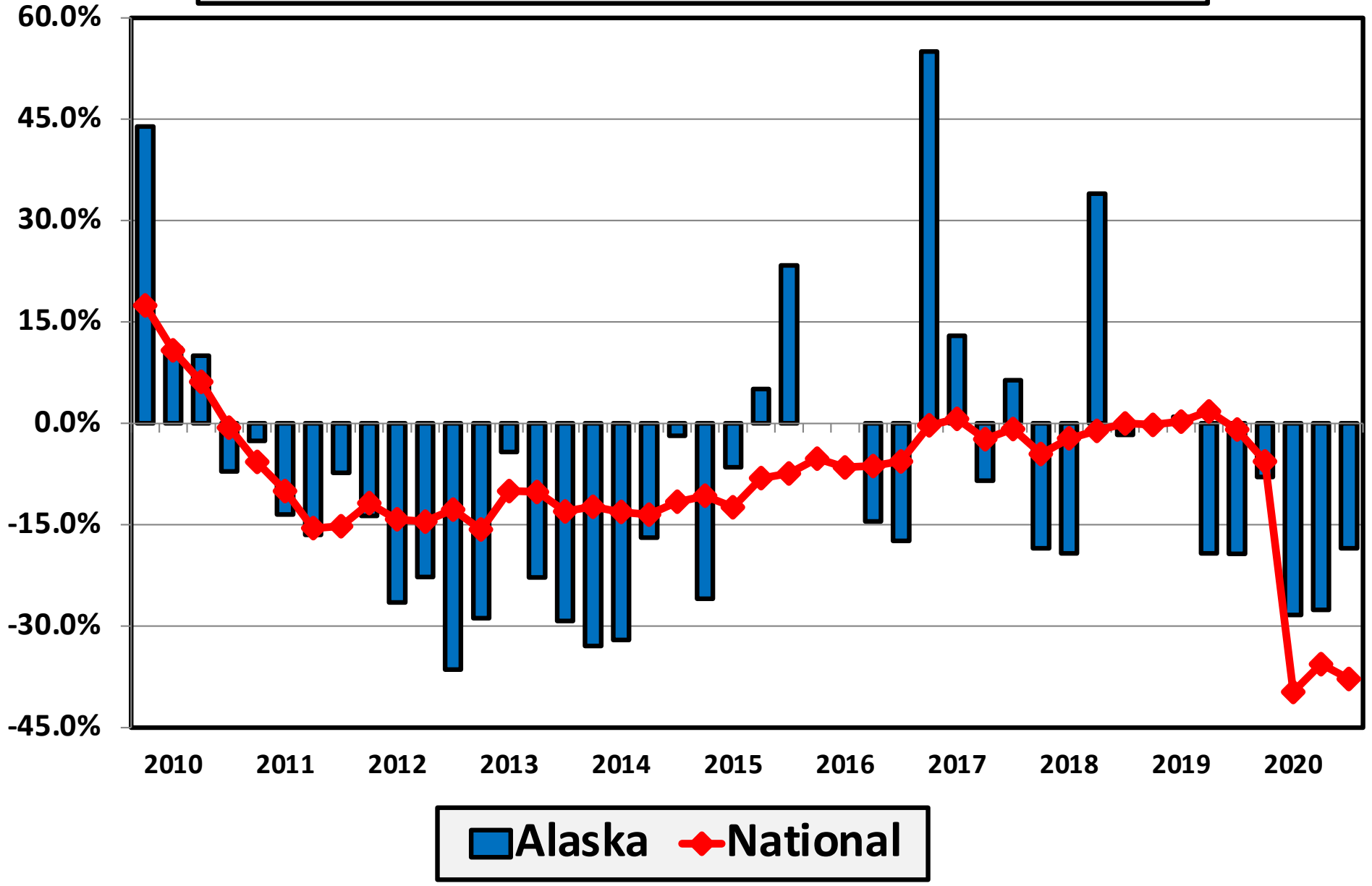
Percent Change in Total Filings Calendar Year 2020 Compared to 2010

(National Average = 65.8% Decrease)

Amount of Decrease



**Filing Trends By Quarter Alaska vs. National Average
(Percent Change From Same Quarter One Year Prior)**

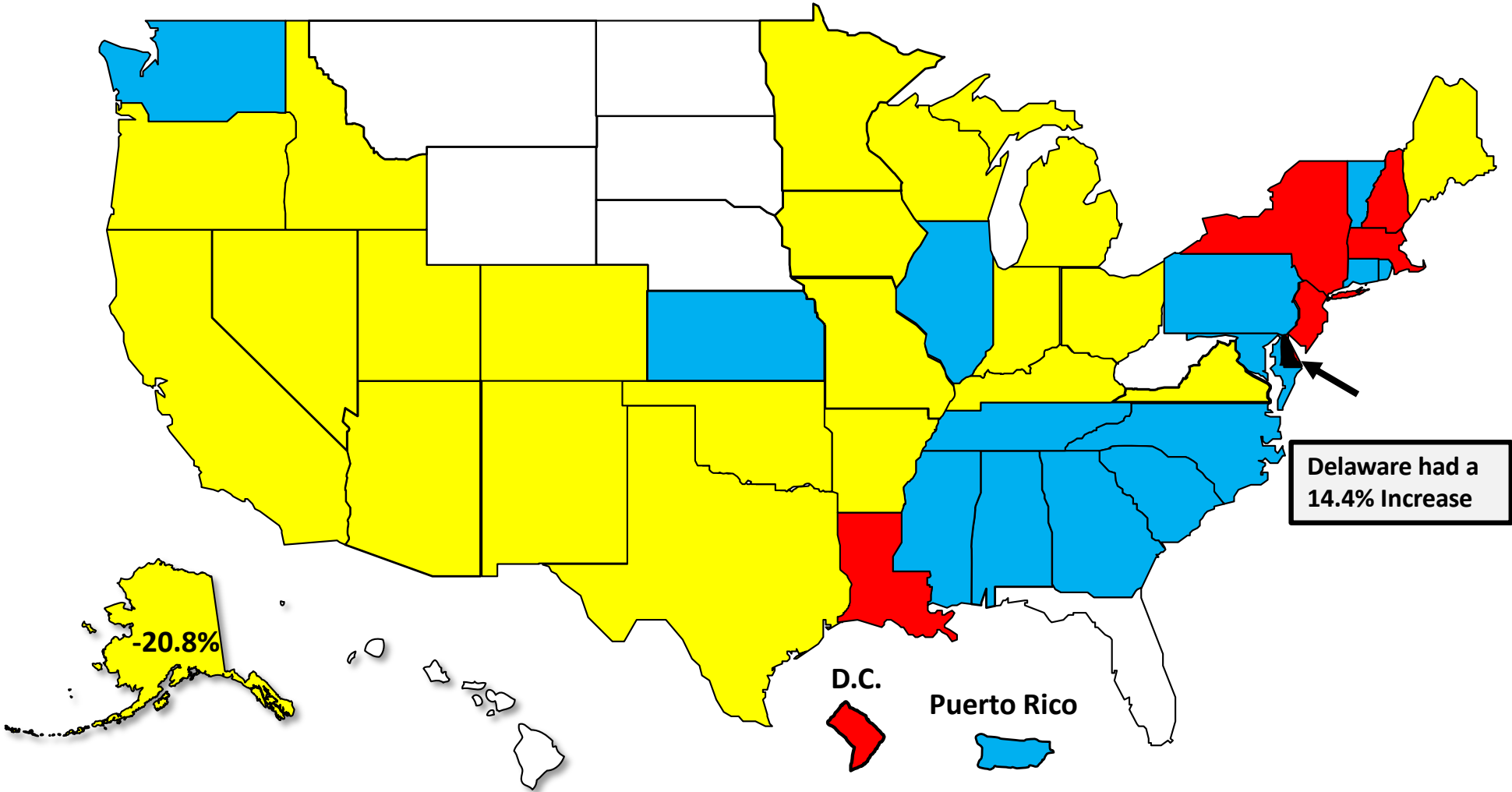


Bankruptcy Filing Trends

Calendar Year 2020 vs. 2019

National Average = 29.7 % Decrease

- Decline Under 20%
- Decline 20% – 30%
- Decline 30% - 40%
- Decline Over 40%





AMERICAN
BANKRUPTCY
INSTITUTE

www.abi.org