

Bankruptcy Filing Trends in Arizona



AMERICAN
BANKRUPTCY
INSTITUTE

Prepared by: **The American Bankruptcy Institute**

<http://www.abi.org/>

Updated
February 2021

Arizona



State at a Glance

	Arizona	National
Population (7/1/2019)	7,278,717	328,239,523
- Change since 2010	13.9%	6.3%
- Foreign Born	13.4%	13.6%
Size (Square Miles)	113,594	3,531,905
Median Household Income	\$58,945	\$62,843
Persons per Household	2.68	2.62
Per Capita Income	\$30,694	\$34,103
Median Home Value	\$225,500	\$217,500
Homeownership Rate	64.4%	64.0%
High School Graduate (or Higher)	87.1%	88.0%
College Graduate (or Higher)	29.5%	32.1%
Disabled	8.7%	8.6%
No Health Insurance	13.6%	9.5%
In Poverty	13.5%	10.5%
Source: U.S. Census Bureau January 2021		

Prepared by: The American Bankruptcy Institute

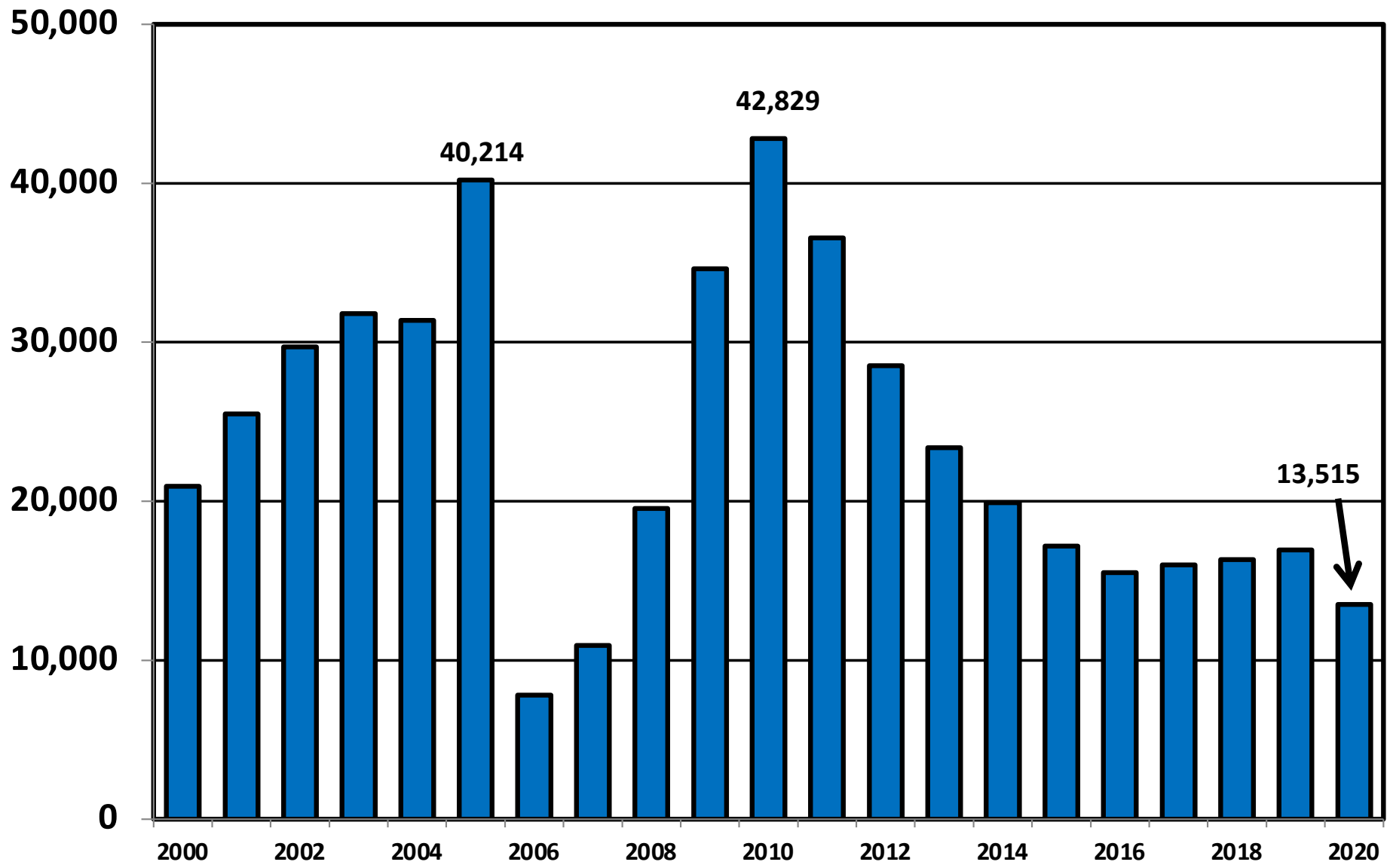
<http://www.abi.org>

**Bankruptcy Filings in Arizona
Calendar Years 2000 - 2020**

Year	Total	Chapter 7	Chapter 11	Chapter 13	Other Cases
2000	20,955	16,839	318	3,792	6
2001	25,489	20,448	296	4,741	4
2002	29,716	23,538	299	5,870	9
2003	31,811	25,432	297	6,079	3
2004	31,387	25,794	196	5,395	2
2005	40,214	35,914	161	4,137	2
2006	7,793	6,286	143	1,362	2
2007	10,920	8,326	242	2,348	4
2008	19,532	15,535	407	3,586	4
2009	34,637	28,391	613	5,627	6
2010	42,829	35,393	635	6,795	6
2011	36,556	30,853	464	5,226	13
2012	28,514	24,304	442	3,765	3
2013	23,381	20,094	303	2,976	8
2014	19,898	17,103	298	2,489	8
2015	17,194	14,475	289	2,429	1
2016	15,514	12,705	210	2,596	3
2017	15,997	12,895	199	2,896	7
2018	16,337	13,156	174	3,004	3
2019	16,933	13,698	153	3,077	5
2020	13,515	11,484	112	1,915	4

District of Arizona

Total Bankruptcy Cases Filed 2000 - 2020



Total Filings Relative to Population 2000 - 2020



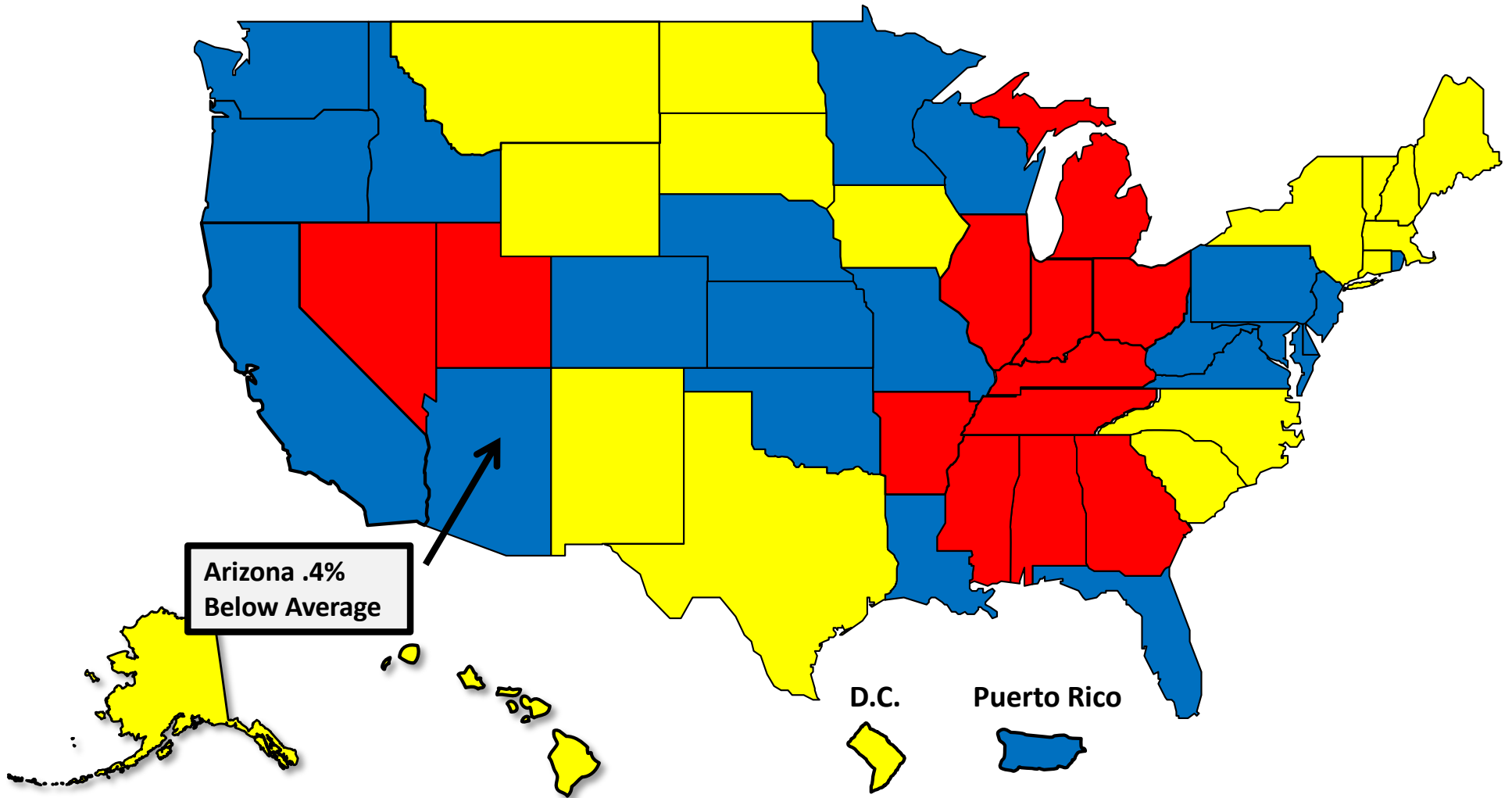
More than 25%
Above Average



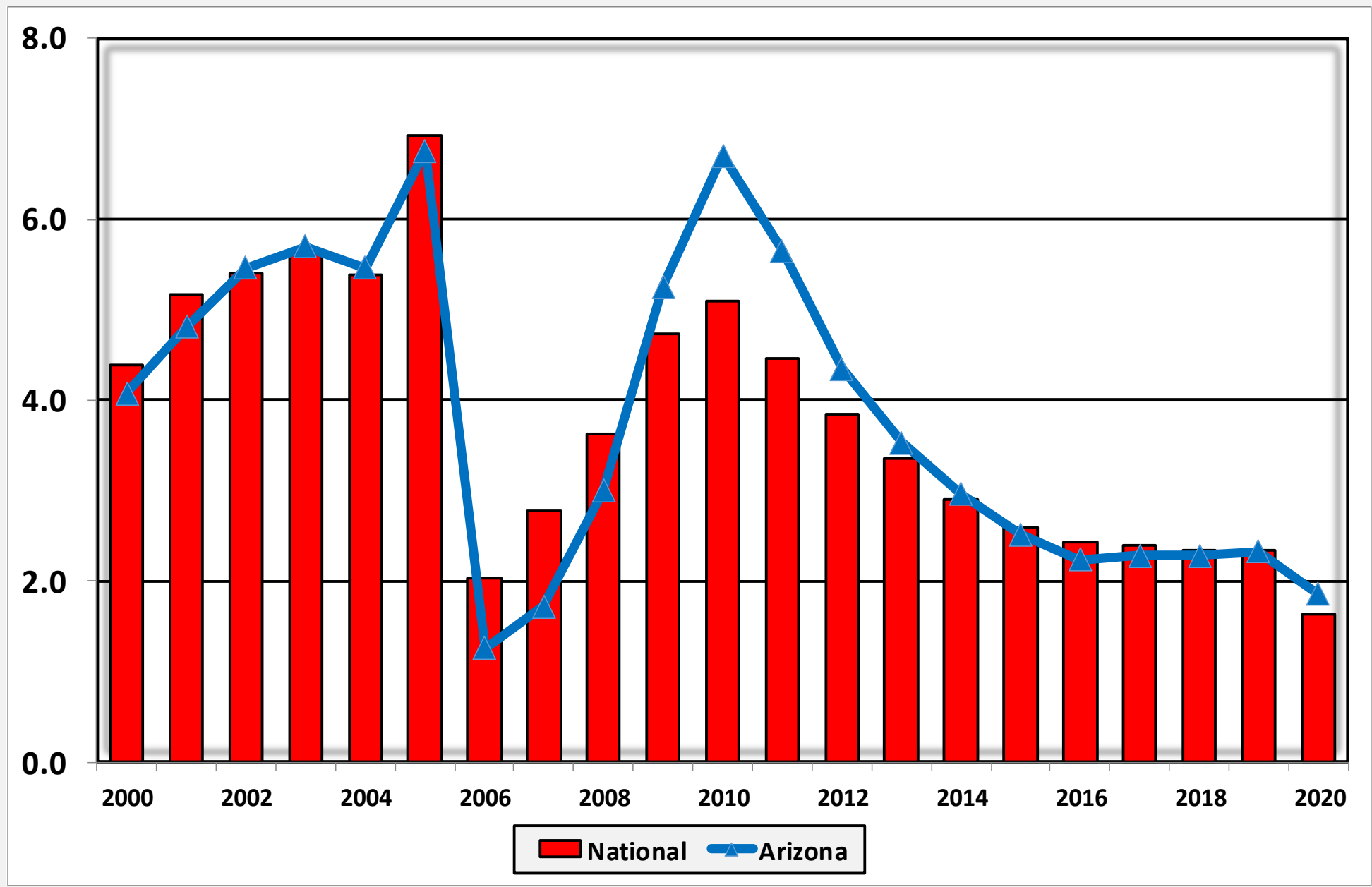
Within 25%
of Average



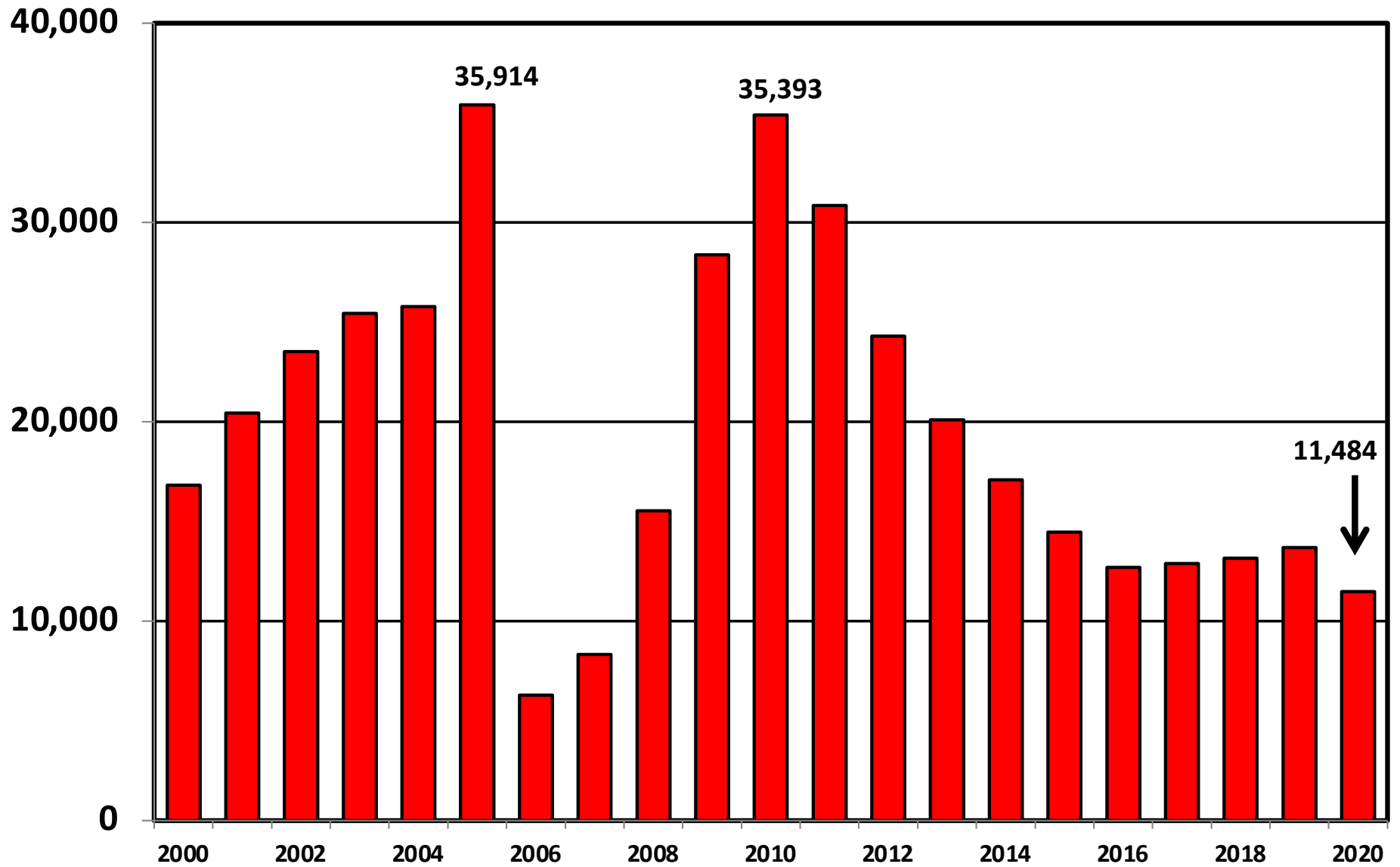
More than 25%
Below Average



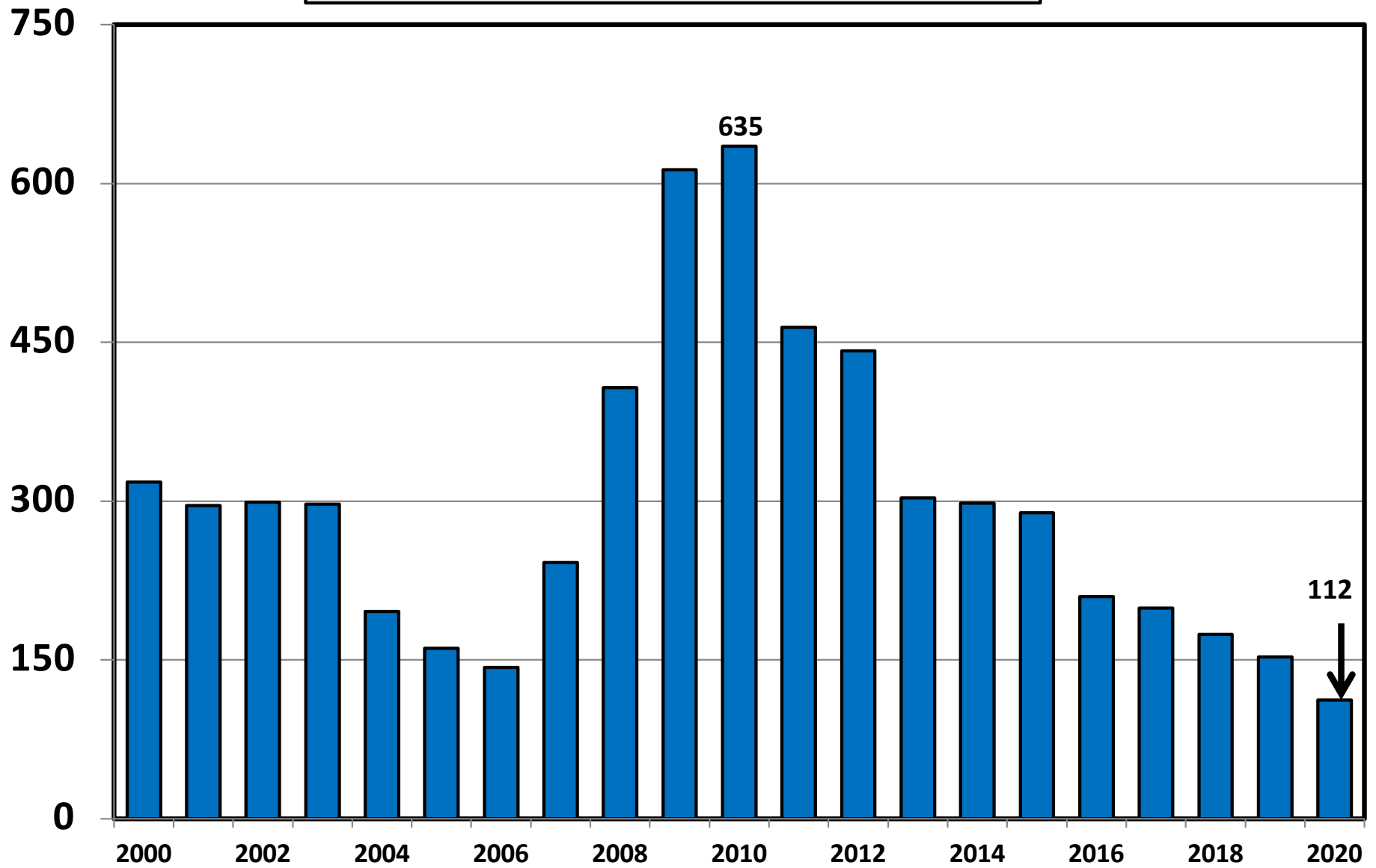
Bankruptcy Filings per 1,000 Population Arizona vs. National Average 2000 - 2020



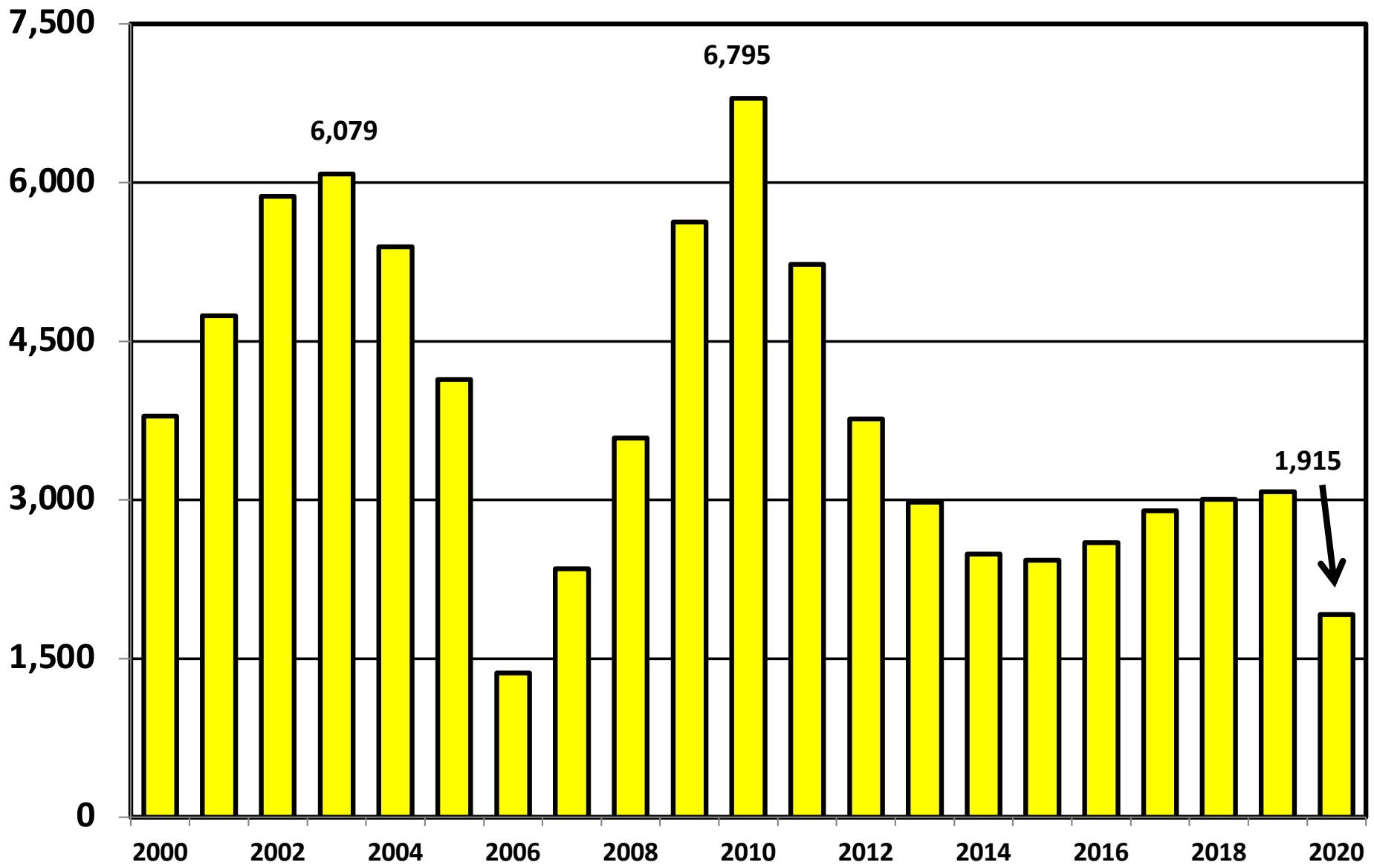
District of Arizona Chapter 7 Cases Filed 2000 - 2020



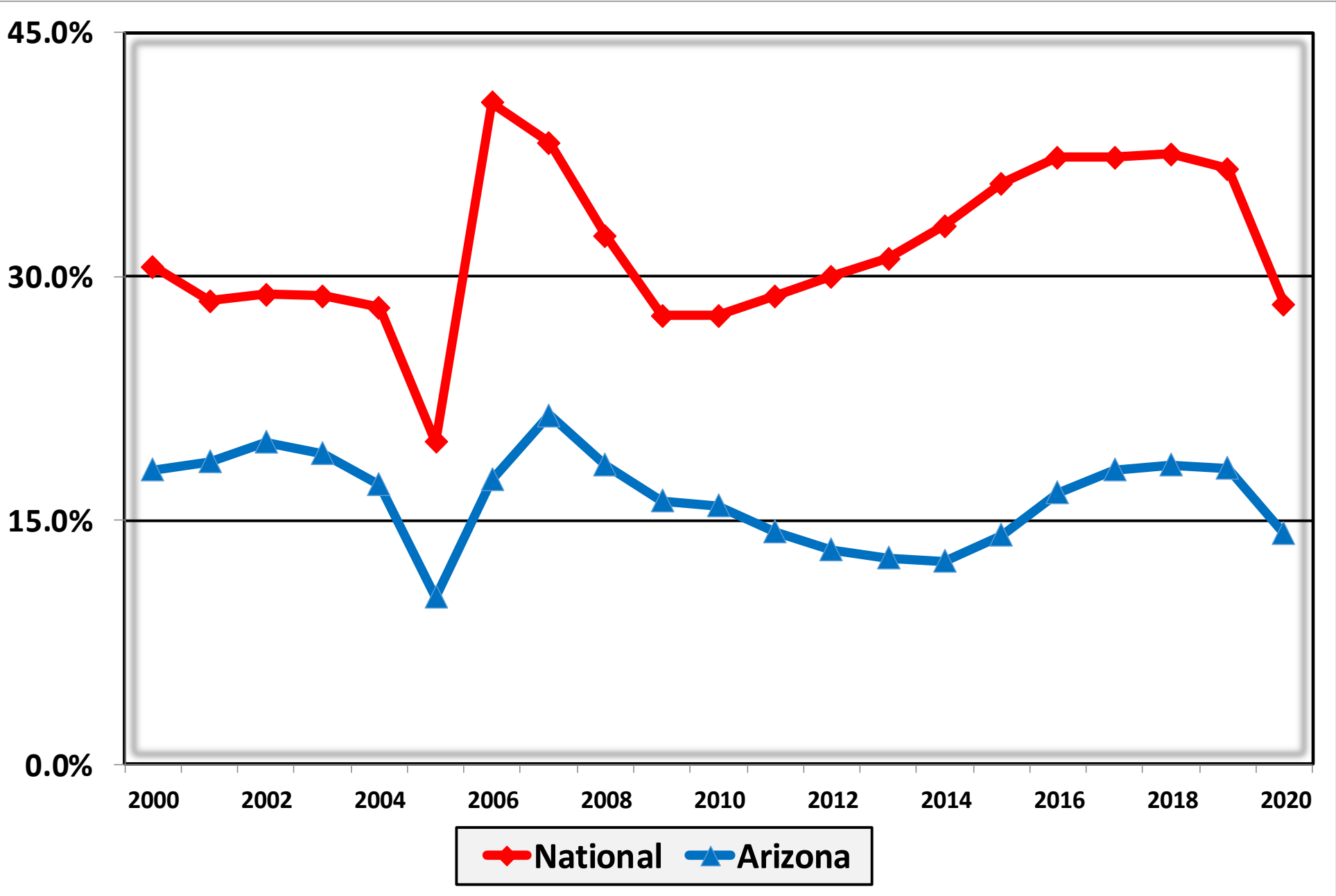
Chapter 11 Cases Filed in Arizona 2000 - 2020



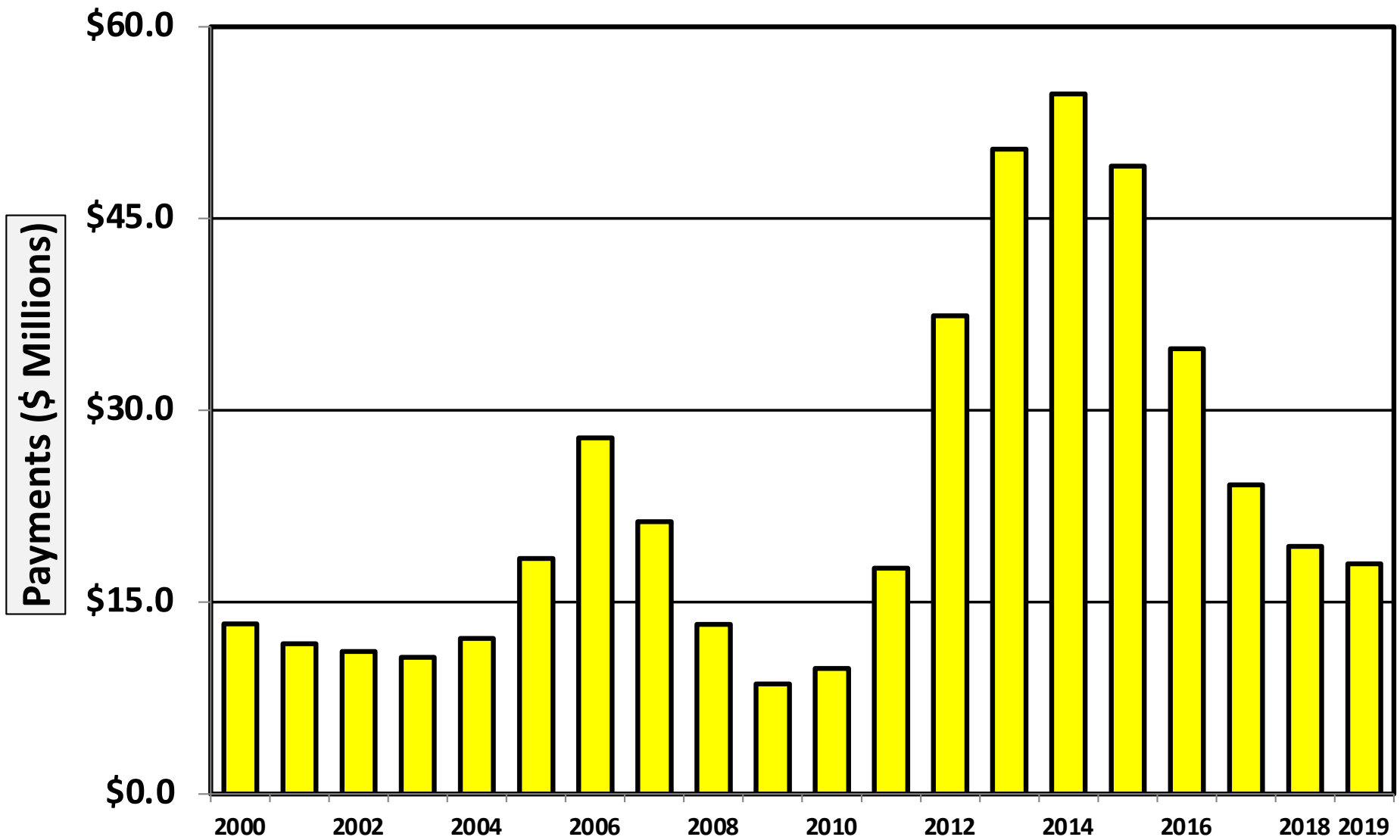
District of Arizona Chapter 13 Cases Filed 2000 - 2020



**Percent of Cases Filed as Chapter 13
Calendar Years 2000 - 2020**

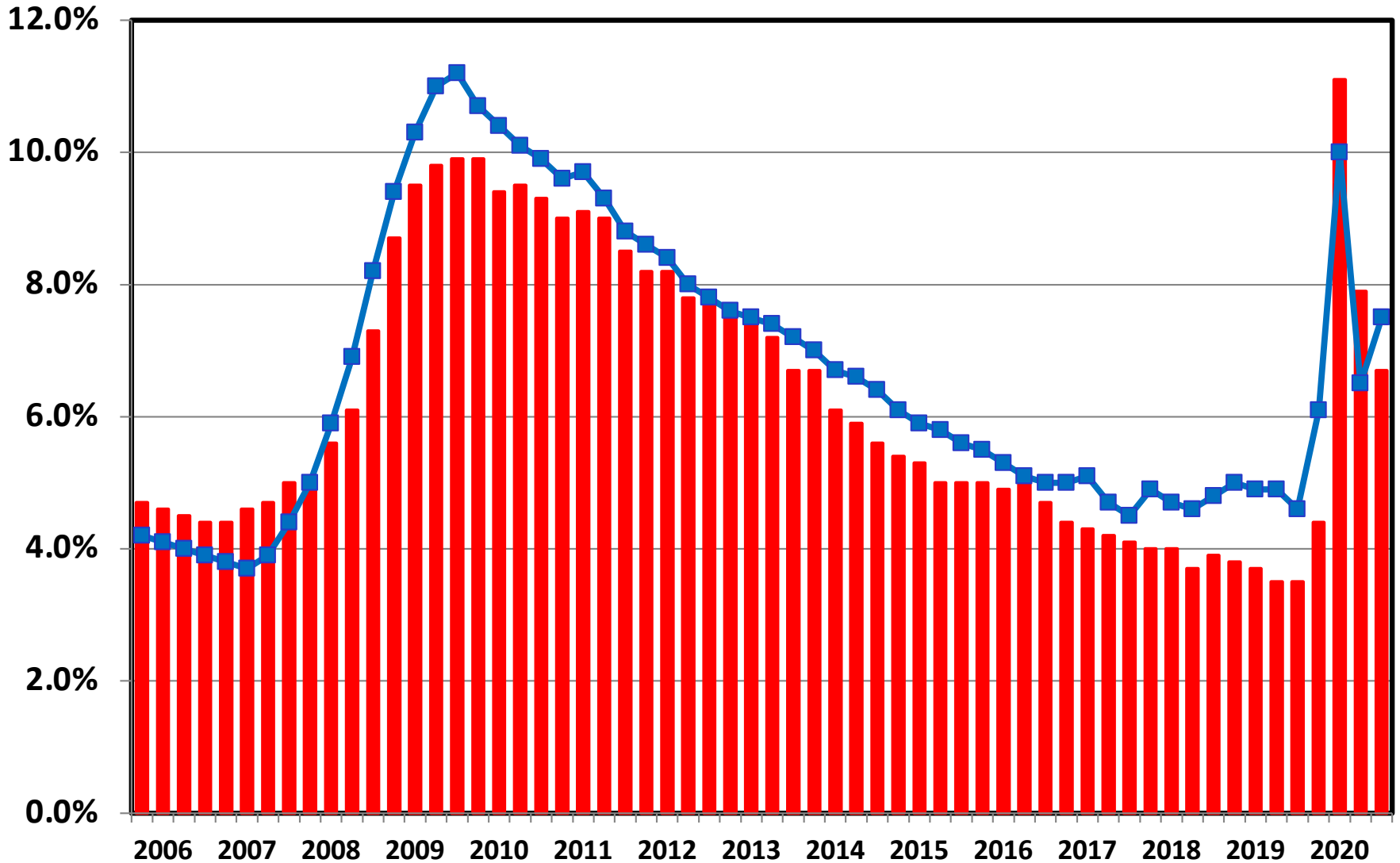


Chapter 13 Cases in Arizona
Amount (in Millions) Paid to Unsecured Creditors
Fiscal Years 2000 - 2019



Source: Executive Office for United States Trustees

Unemployment Rate By Quarter 2006 - 2020



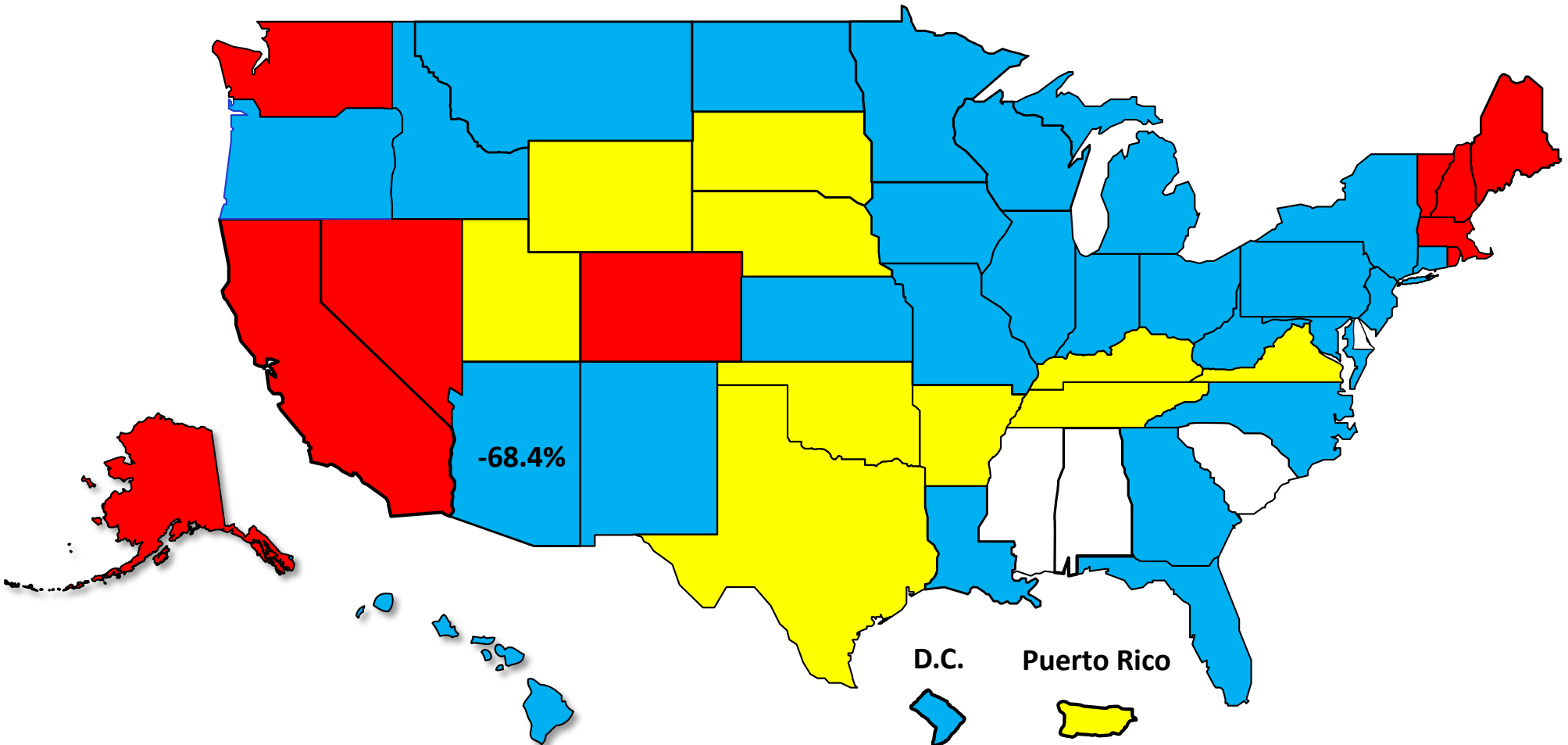
■ National ■ Arizona

Source: Bureau of Labor Statistics

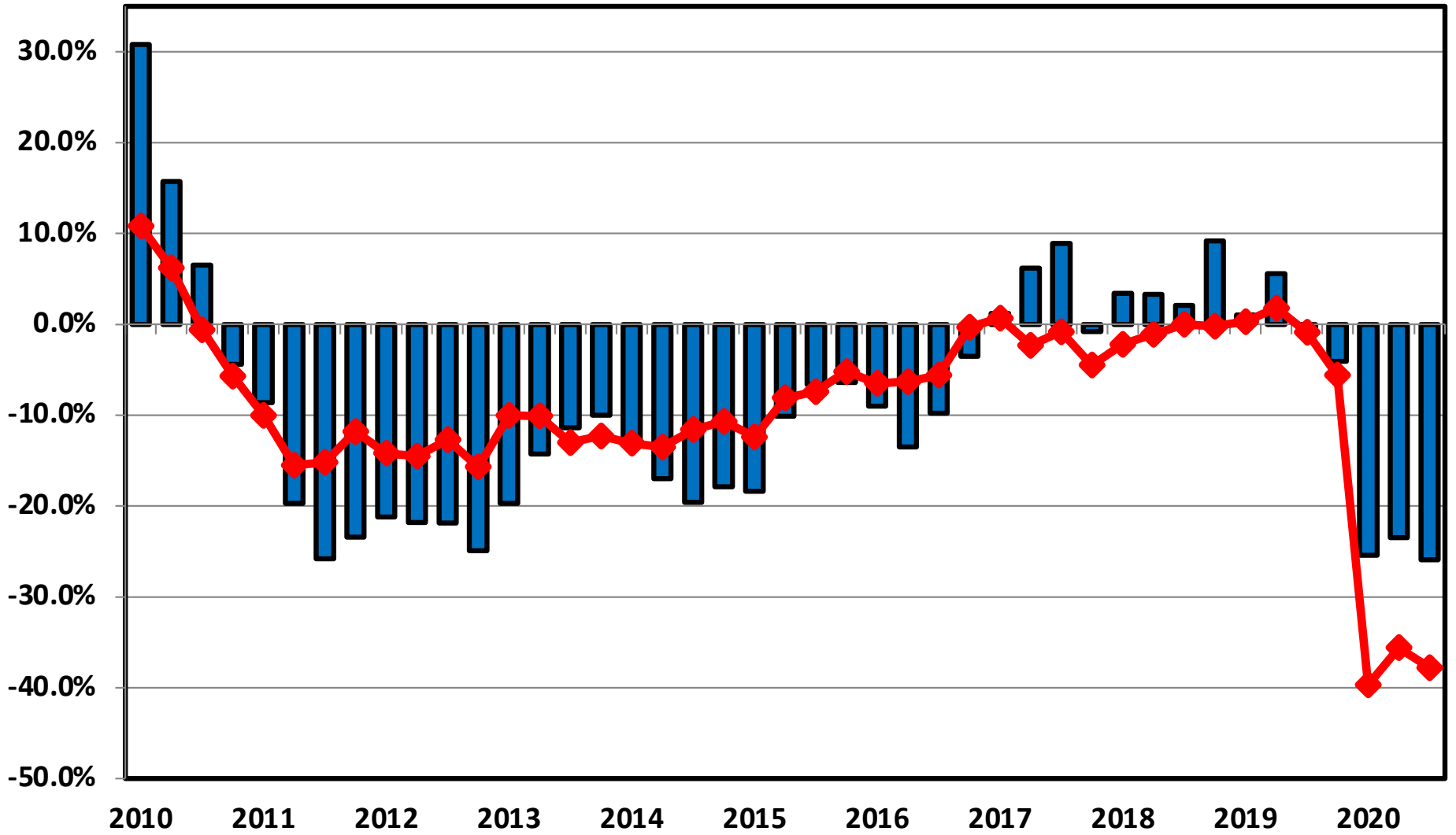
Percent Change in Total Filings Calendar Year 2020 Compared to 2010

(National Average = 65.8% Decrease)

Amount of Decrease



**Filing Trends By Quarter Arizona vs. National Average
(Percent Change From Same Quarter One Year Prior)**



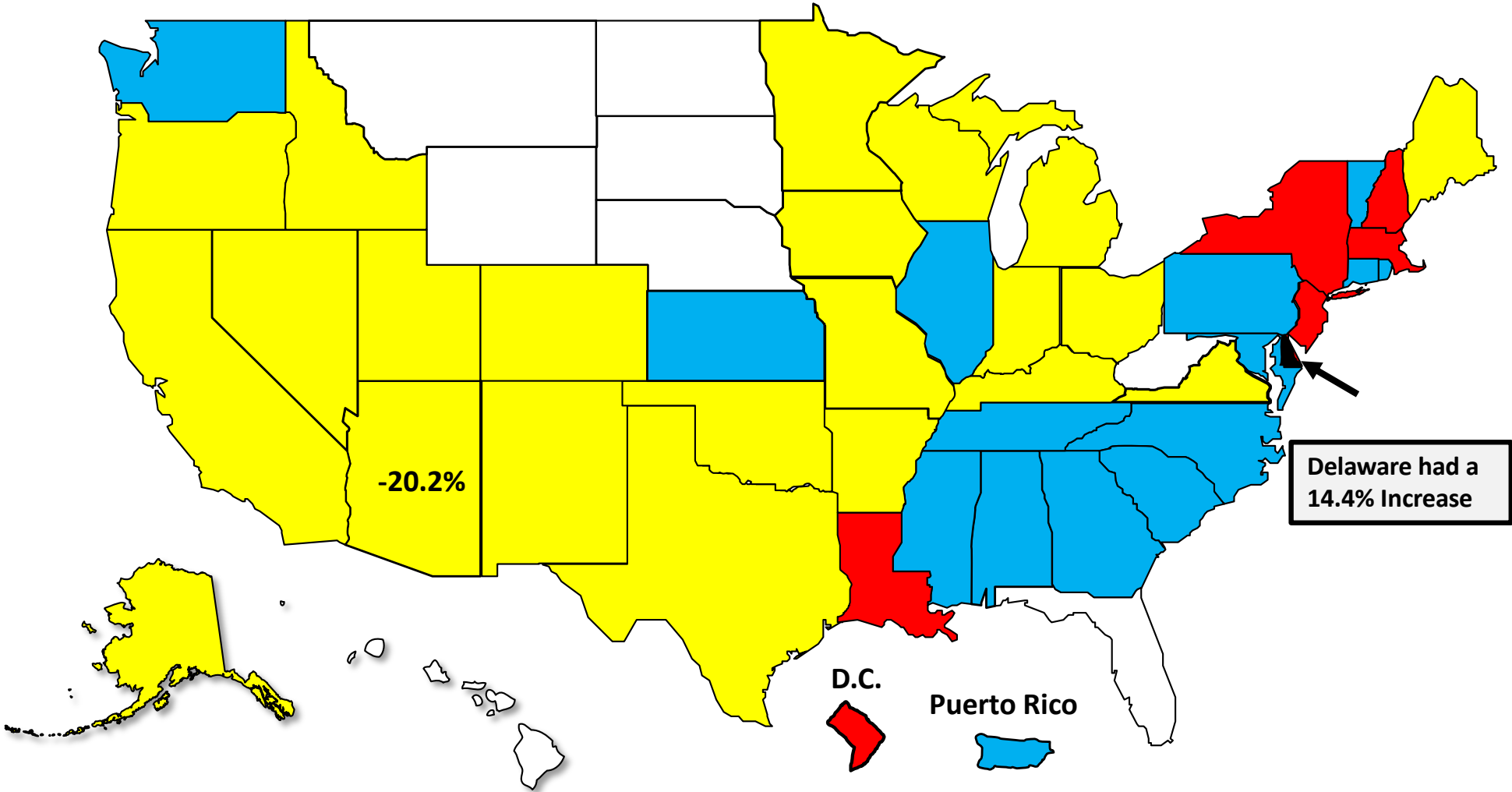
Arizona **National**

Bankruptcy Filing Trends

Calendar Year 2020 vs. 2019

National Average = 29.7 % Decrease

- Decline Under 20%
- Decline 20% – 30%
- Decline 30% - 40%
- Decline Over 40%





AMERICAN
BANKRUPTCY
INSTITUTE

www.abi.org