

Bankruptcy Filing Trends in Arkansas



Prepared by: **The American Bankruptcy Institute**

<http://www.abi.org/>



AMERICAN
BANKRUPTCY
INSTITUTE

Updated
February 2021

Arkansas



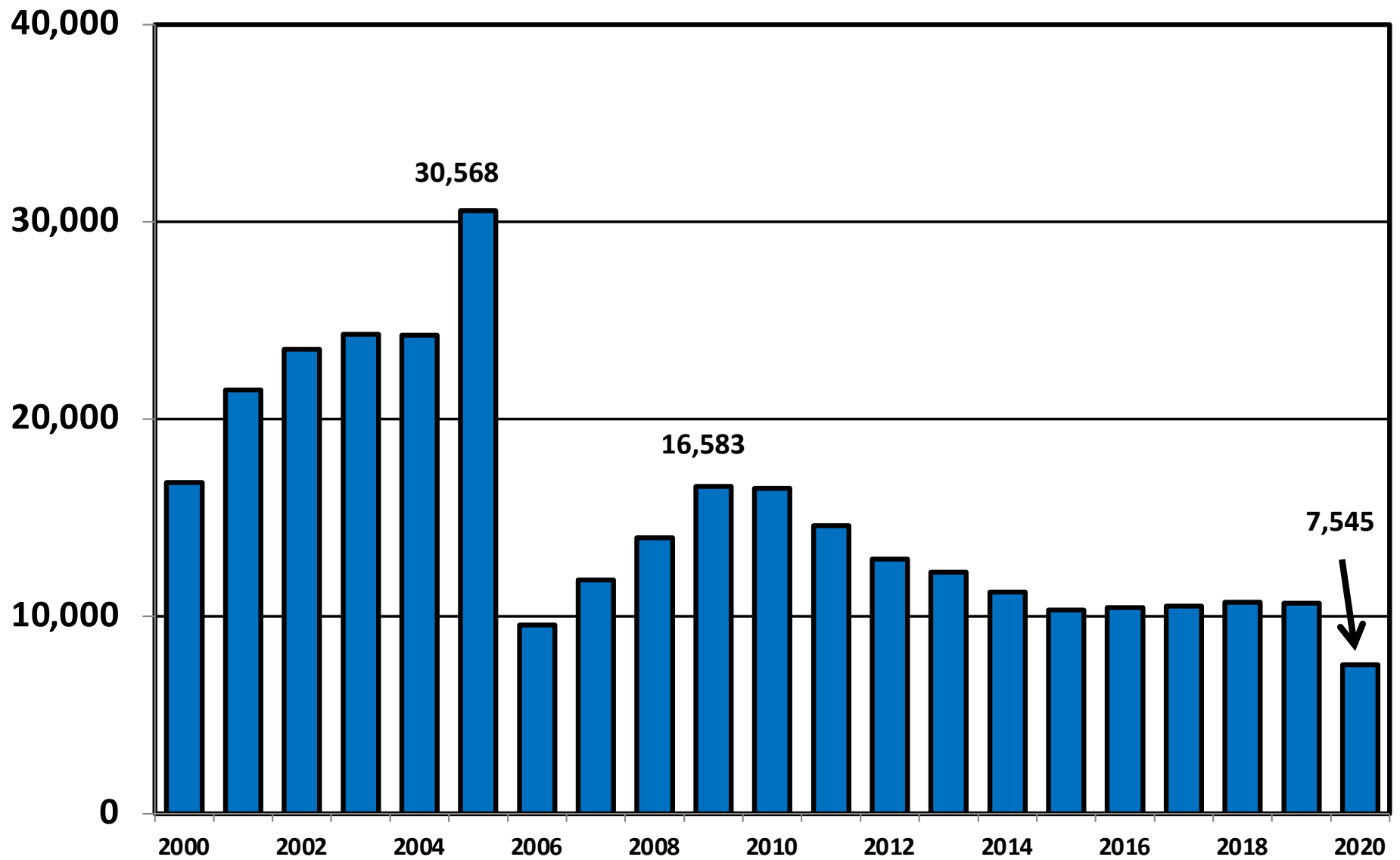
State at a Glance		
	Arkansas	National
Population (7/1/2019)	3,017,804	328,239,523
- Change since 2010	3.5%	6.3%
- Foreign Born	4.8%	13.6%
Size (Square Miles)	52,035	3,531,905
Median Household Income	\$47,597	\$62,843
Persons per Household	2.52	2.62
Per Capita Income	\$26,577	\$34,103
Median Home Value	\$127,800	\$217,500
Homeownership Rate	65.6%	64.0%
High School Graduate (or Higher)	86.6%	88.0%
College Graduate (or Higher)	23.0%	32.1%
Disabled	12.6%	8.6%
No Health Insurance	10.9%	9.5%
In Poverty	16.2%	10.5%
Source: U.S. Census Bureau January 2021		

**Bankruptcy Filings in Arkansas
Calendar Years 2000 - 2020**

Year	Total	Chapter 7	Chapter 11	Chapter 13	Other Cases
2000	16,784	9,410	35	7,331	8
2001	21,484	12,641	36	8,801	6
2002	23,546	13,691	43	9,806	6
2003	24,307	14,472	52	9,771	12
2004	24,263	14,170	49	10,043	1
2005	30,568	20,227	40	10,289	12
2006	9,564	4,423	27	5,092	22
2007	11,852	5,945	55	5,840	12
2008	13,991	7,250	97	6,632	12
2009	16,583	9,138	96	7,336	13
2010	16,503	9,150	86	7,254	13
2011	14,604	7,869	68	6,648	19
2012	12,914	6,727	45	6,130	12
2013	12,252	5,938	58	6,243	13
2014	11,236	5,361	39	5,818	18
2015	10,330	4,796	37	5,484	13
2016	10,451	4,908	27	5,499	17
2017	10,539	5,089	32	5,408	10
2018	10,734	5,208	29	5,484	13
2019	10,676	5,147	23	5,492	14
2020	7,545	4,220	30	3,281	14

Total Bankruptcy Cases Filed in Arkansas

Calendar Years 2000 - 2020



Total Filings Relative to Population 2000 - 2020



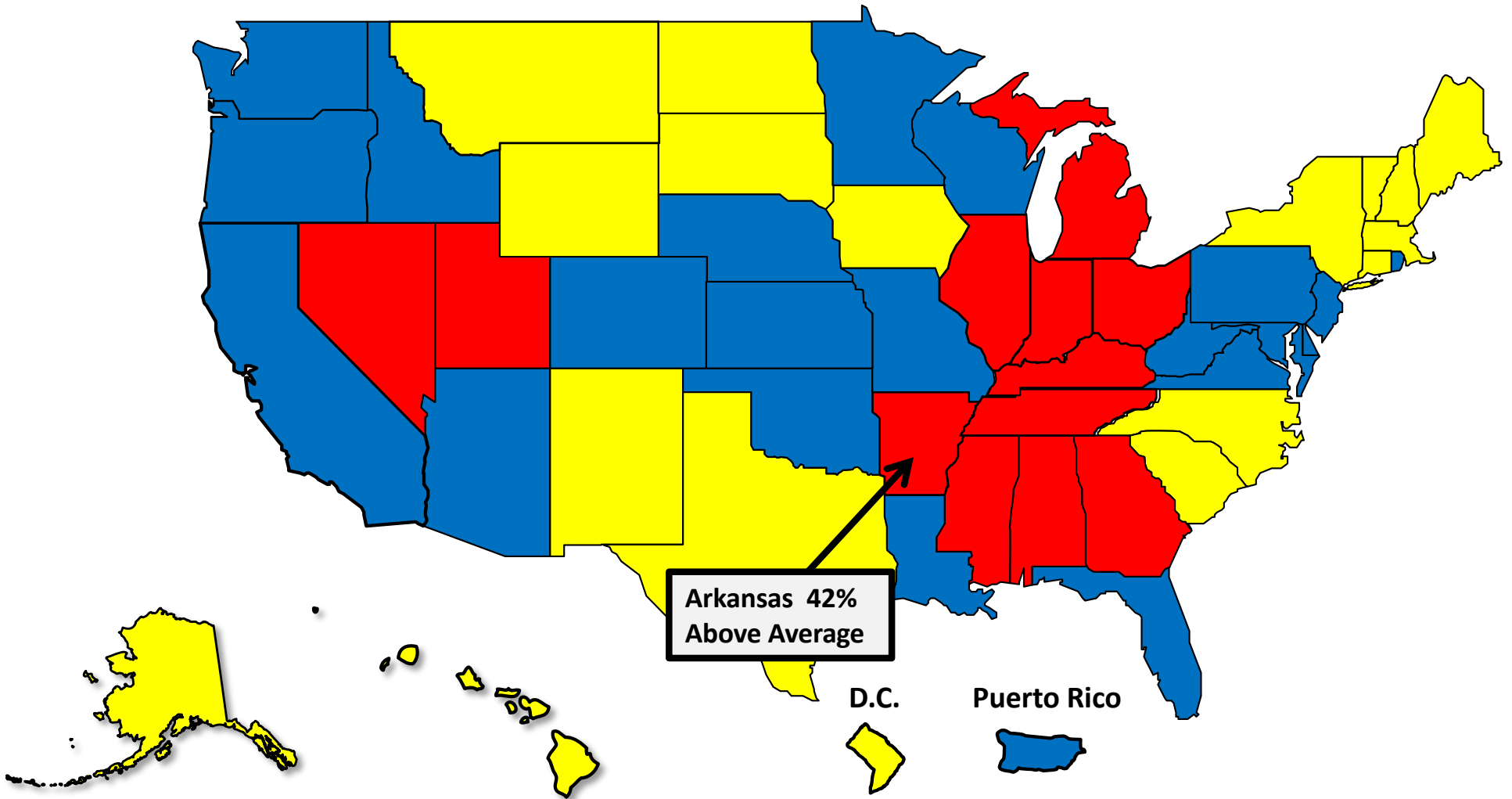
More than 25%
Above Average



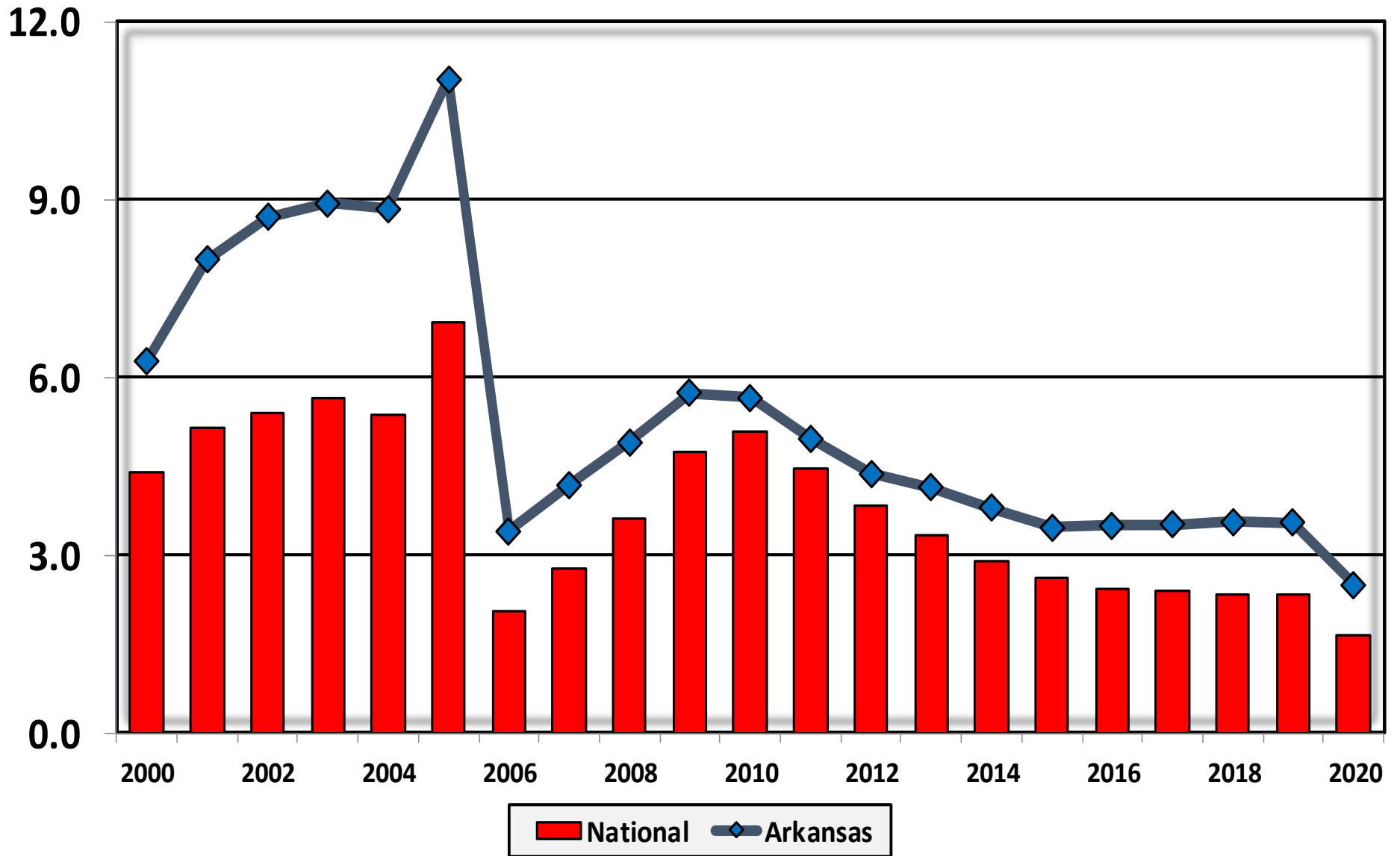
Within 25%
of Average



More than 25%
Below Average

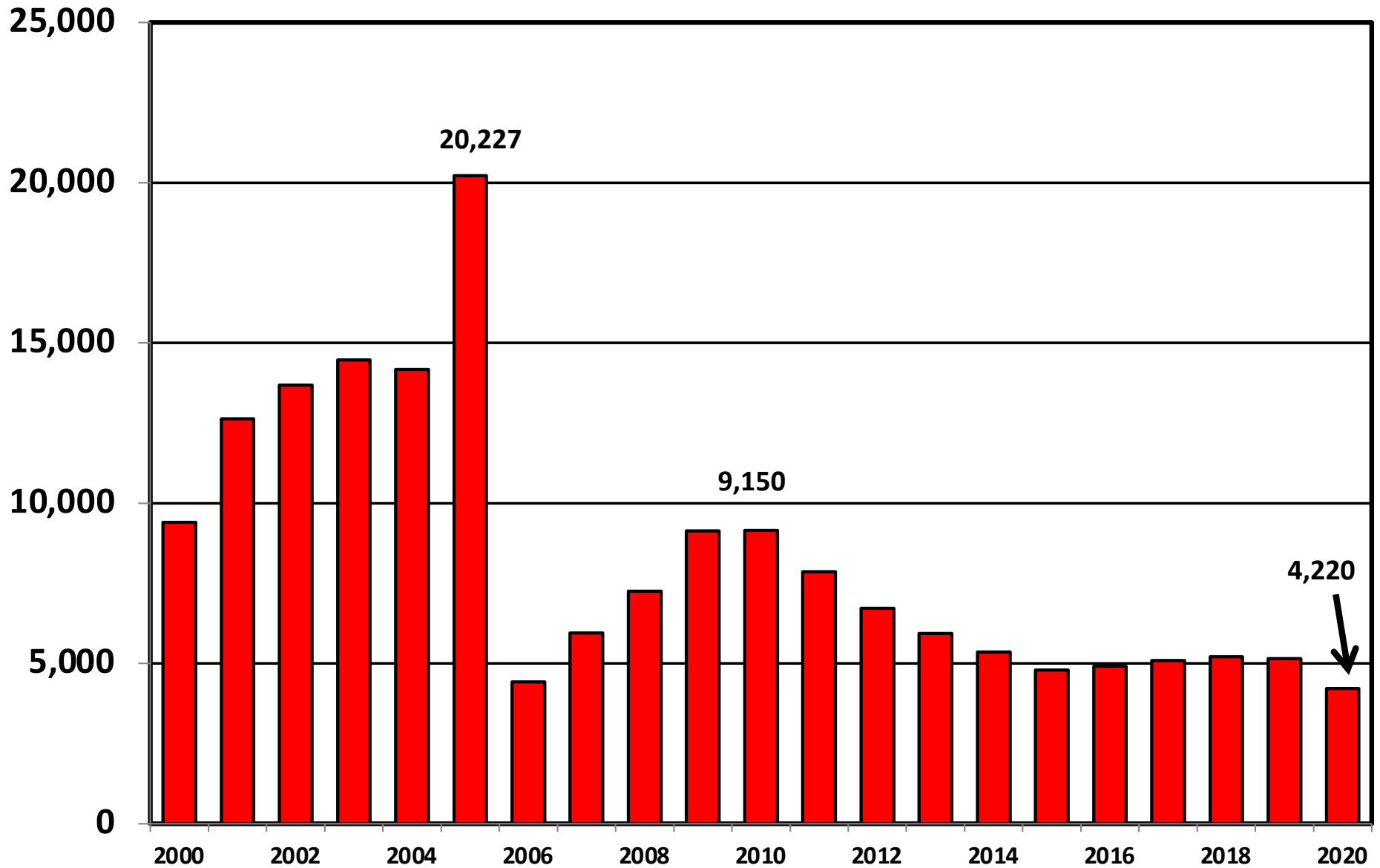


Bankruptcy Filings per 1,000 Population Arkansas vs. National Average 2000 - 2020

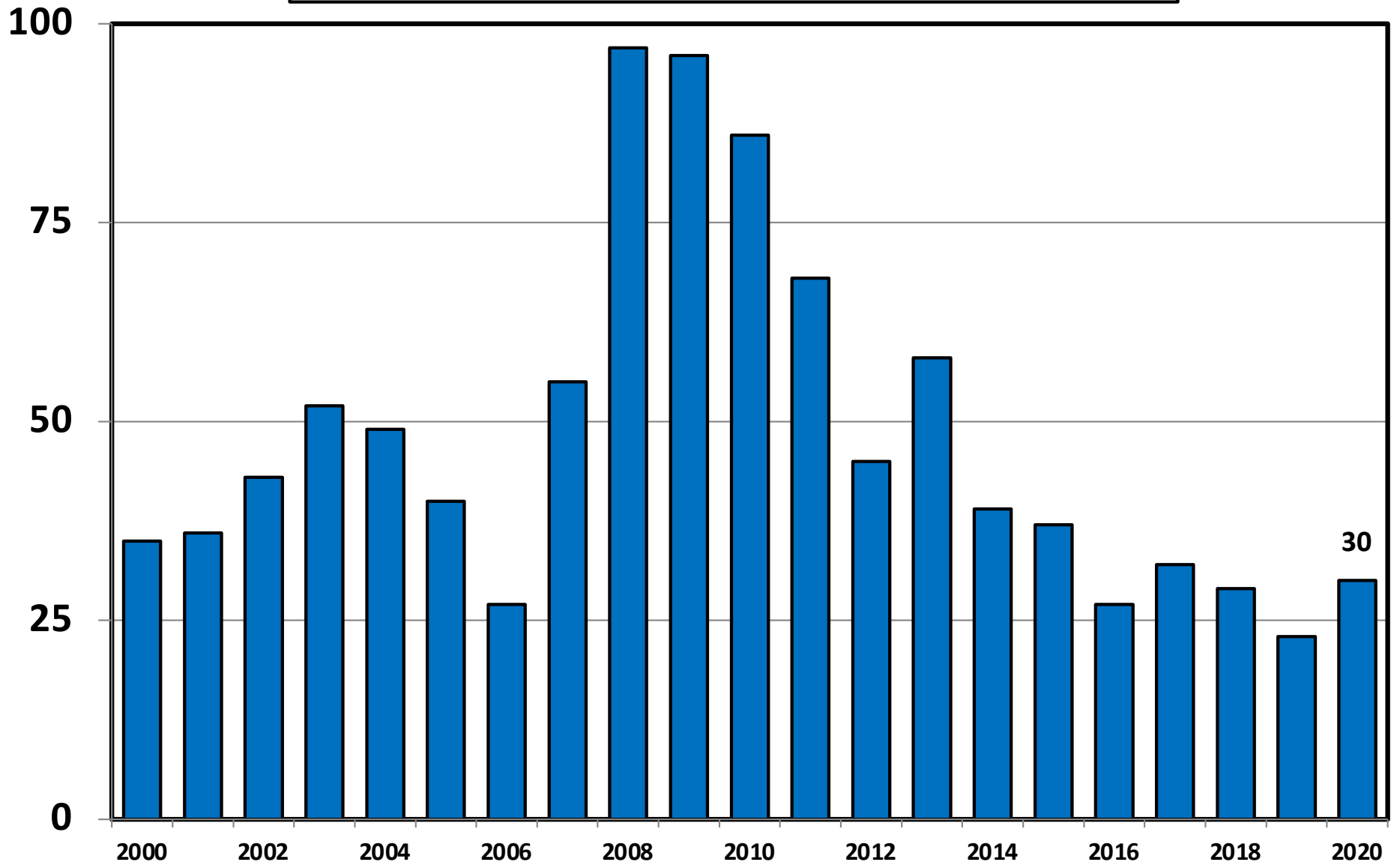


Chapter 7 Cases Filed In Arkansas

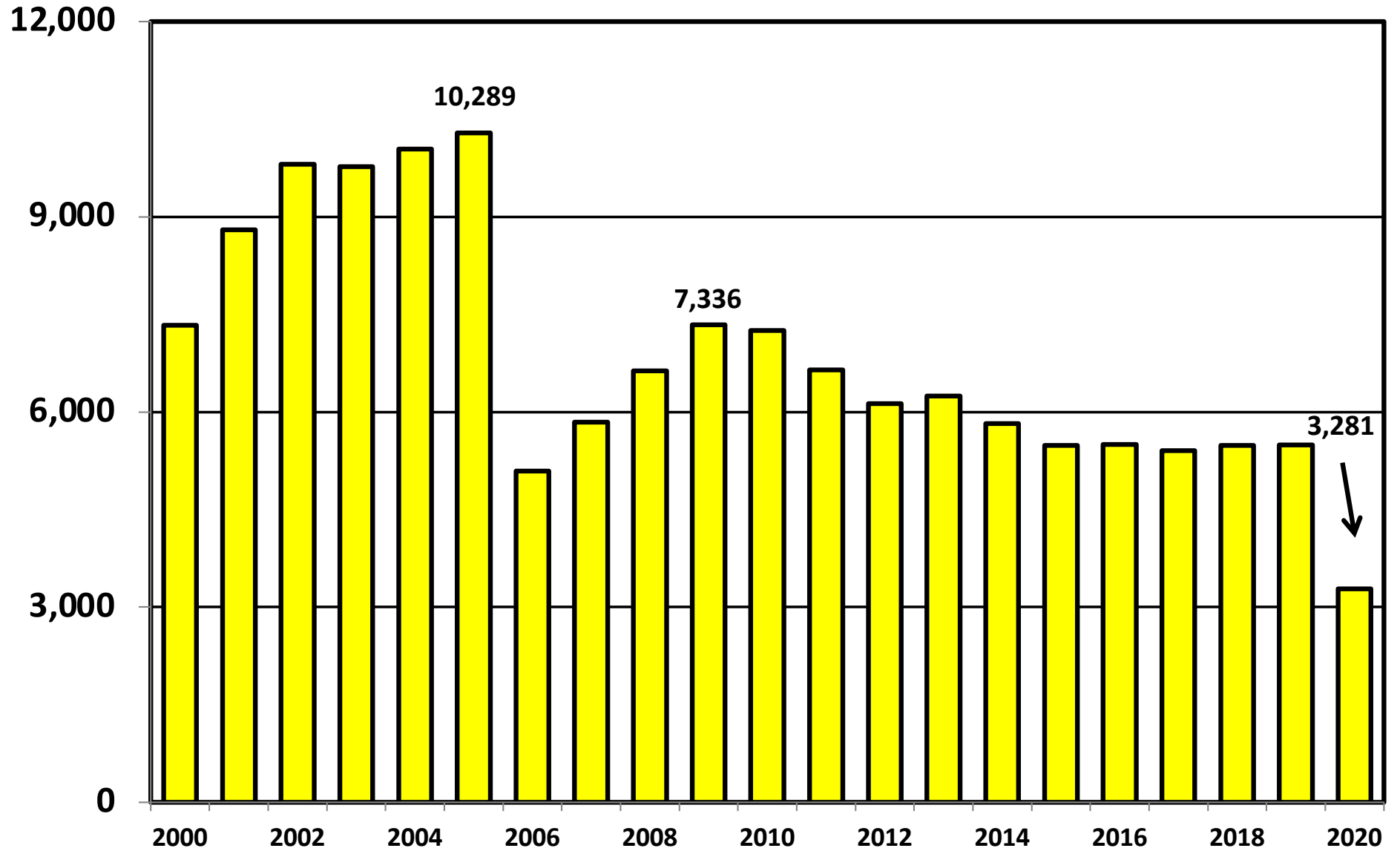
Calendar Years 2000 - 2020



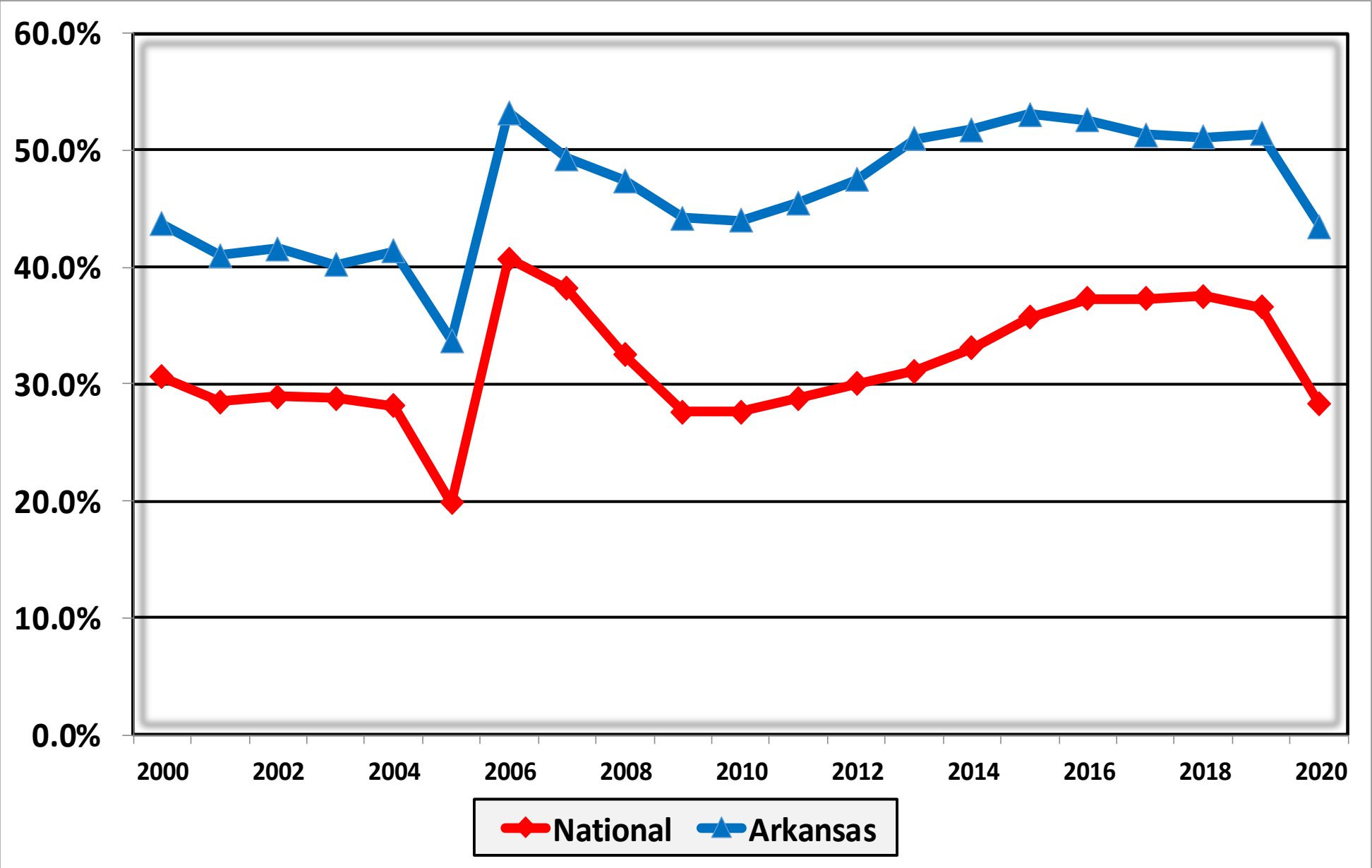
Chapter 11 Cases Filed in Arkansas 2000 - 2020



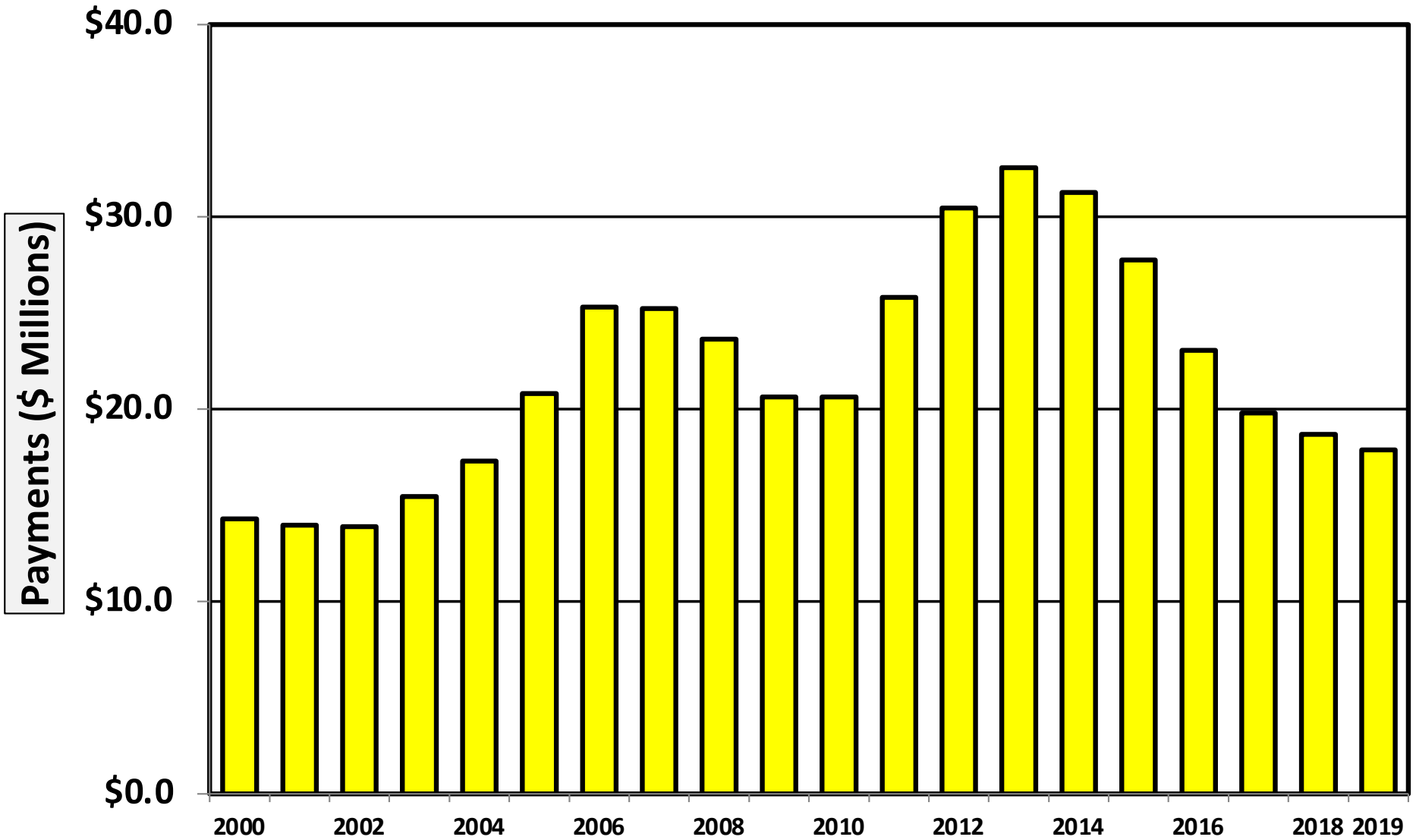
Chapter 13 Cases Filed in Arkansas 2000 - 2020



**Percent of Cases Filed as Chapter 13
Calendar Years 2000 - 2020**

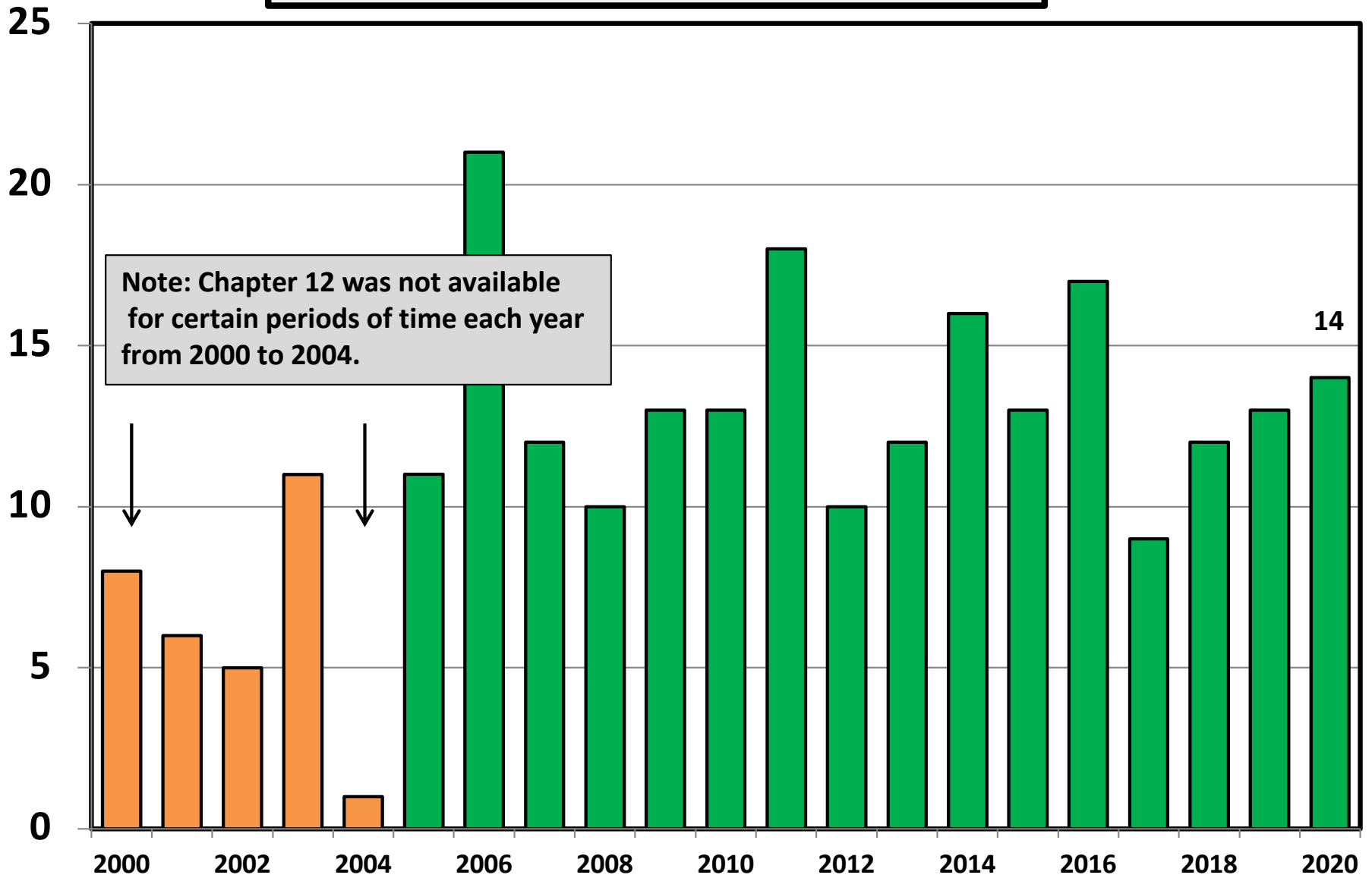


Chapter 13 Cases in Arkansas
Amount (in Millions) Paid to Unsecured Creditors
Fiscal Years 2000 - 2019

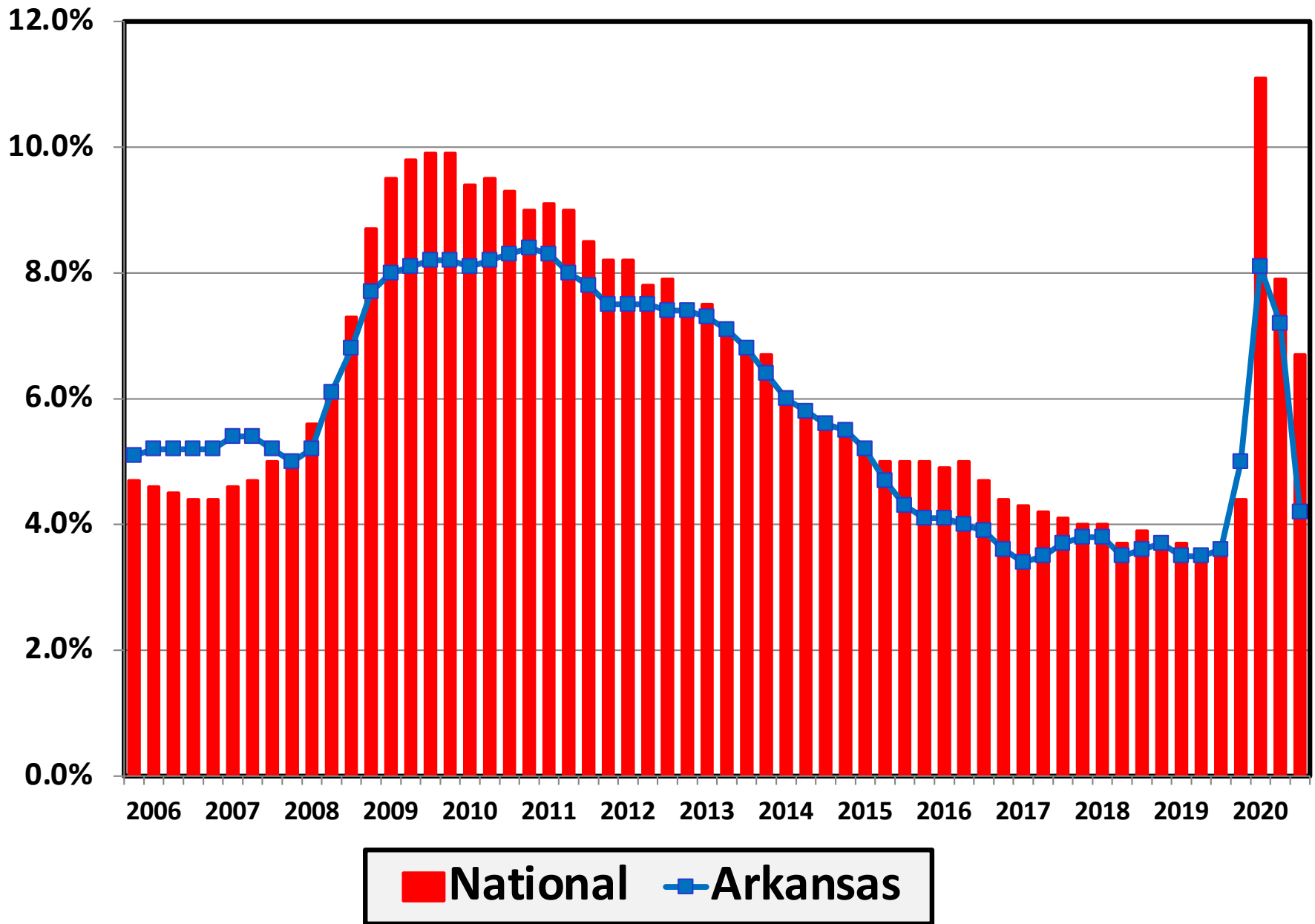


Source: Executive Office for United States Trustees

Chapter 12 Cases Filed in Arkansas 2000 - 2020



Unemployment Rate By Quarter 2006 - 2020

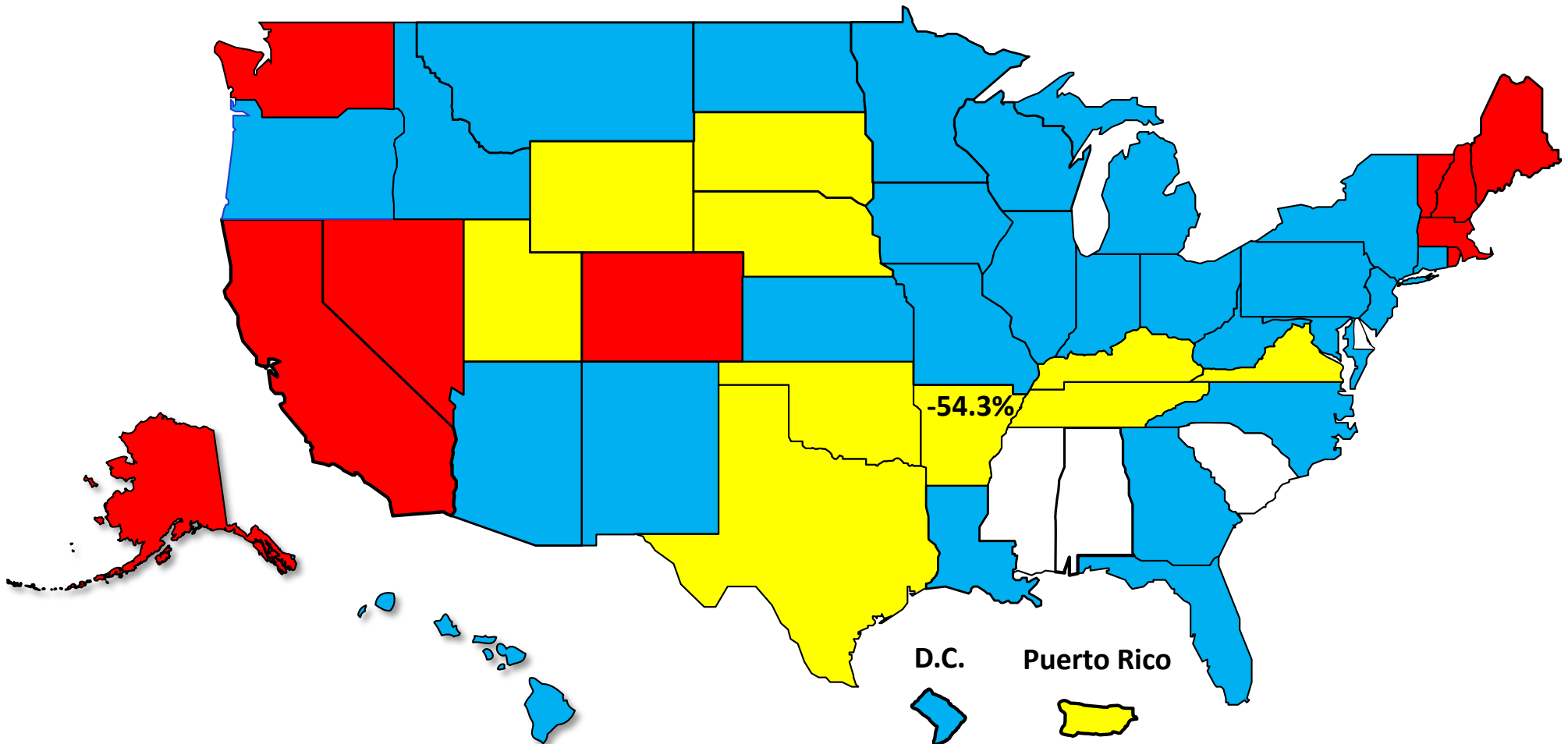


Source: Bureau of Labor Statistics

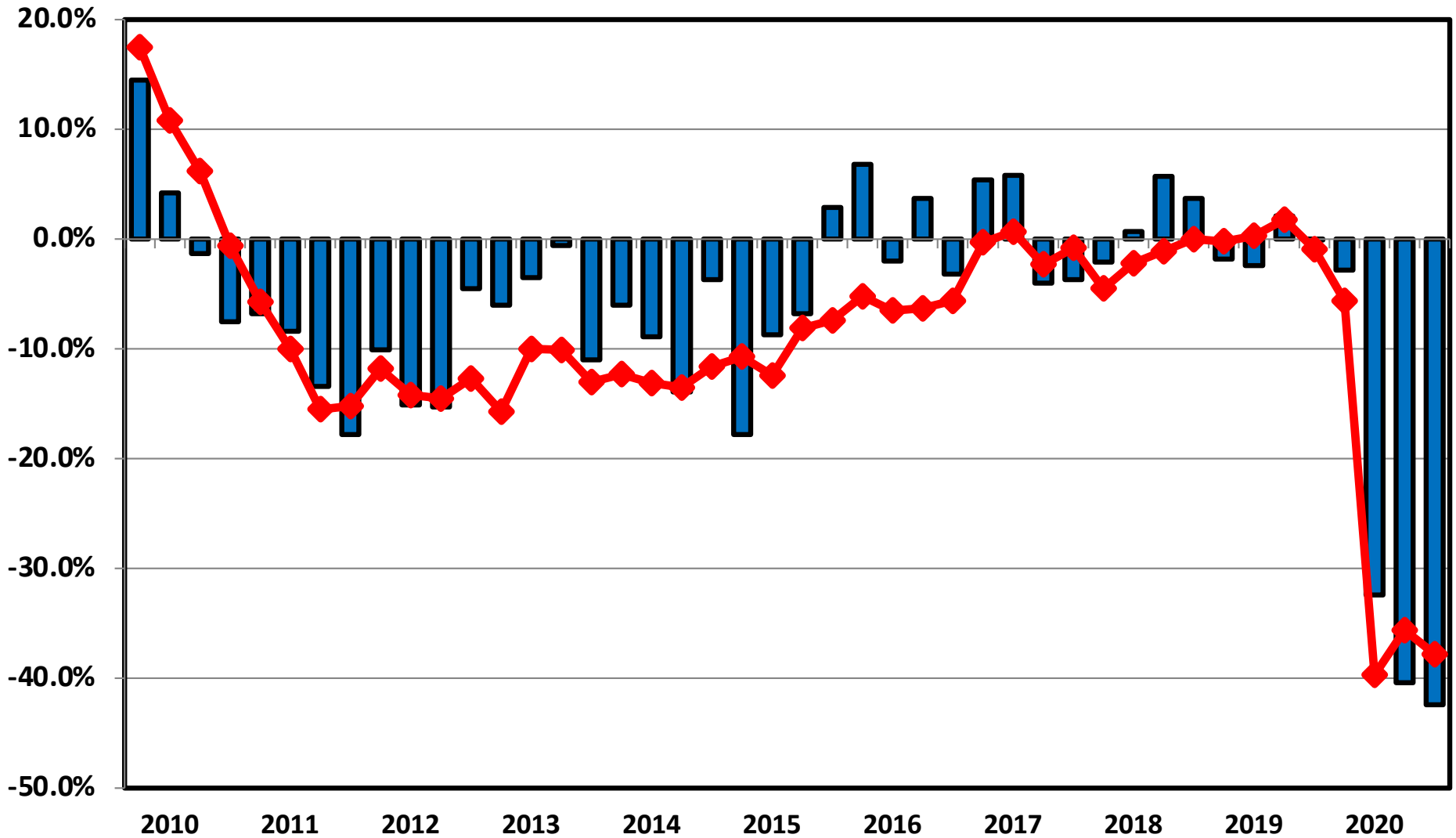
Percent Change in Total Filings Calendar Year 2020 Compared to 2010

(National Average = 65.8% Decrease)

Amount of Decrease



**Filing Trends By Quarter Arkansas vs. National Average
(Percent Change From Same Quarter One Year Prior)**



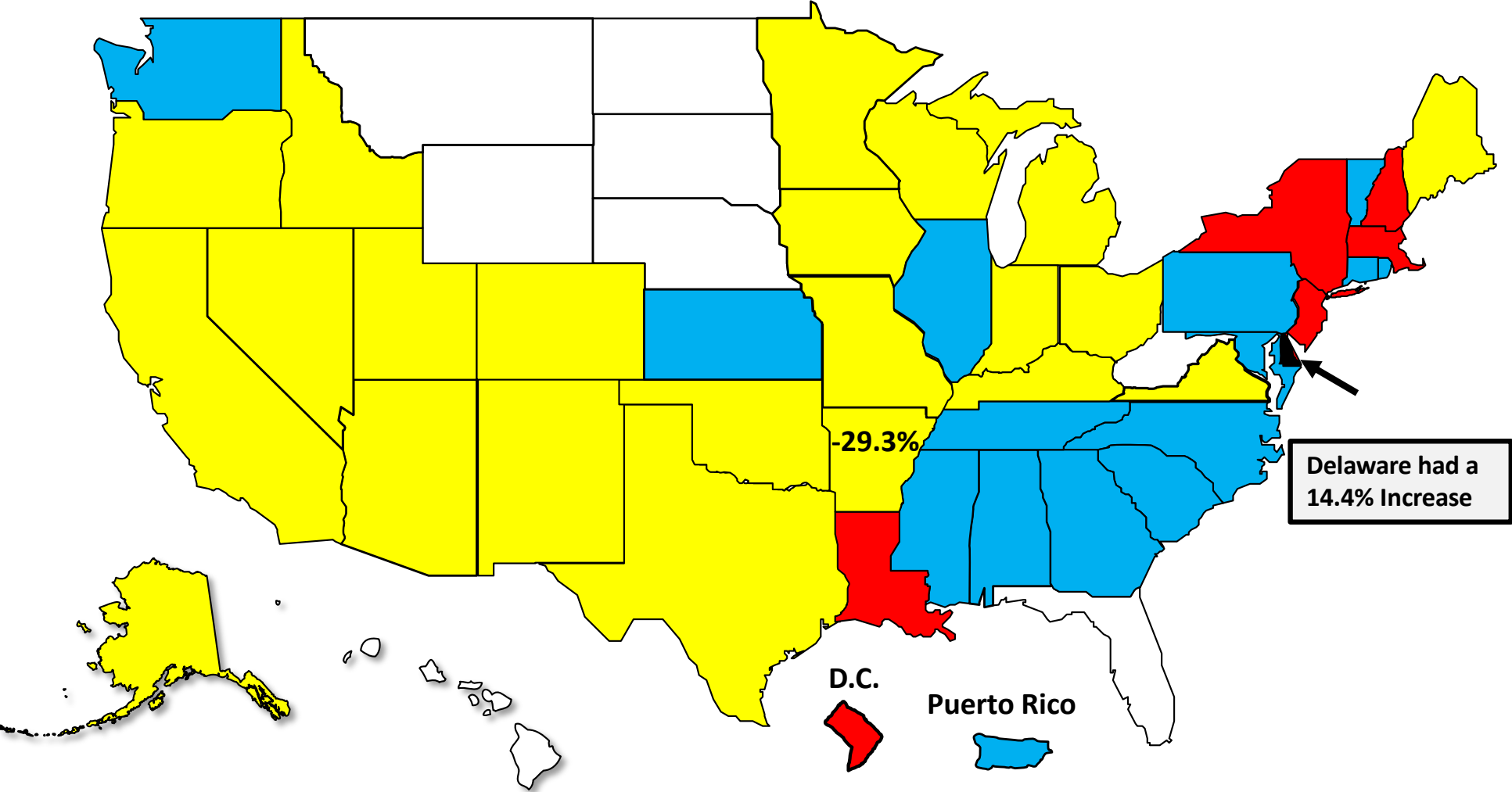
Arkansas National

Bankruptcy Filing Trends

Calendar Year 2020 vs. 2019

National Average = 29.7 % Decrease

- Decline Under 20%
- Decline 20% – 30%
- Decline 30% - 40%
- Decline Over 40%





AMERICAN
BANKRUPTCY
INSTITUTE

www.abi.org