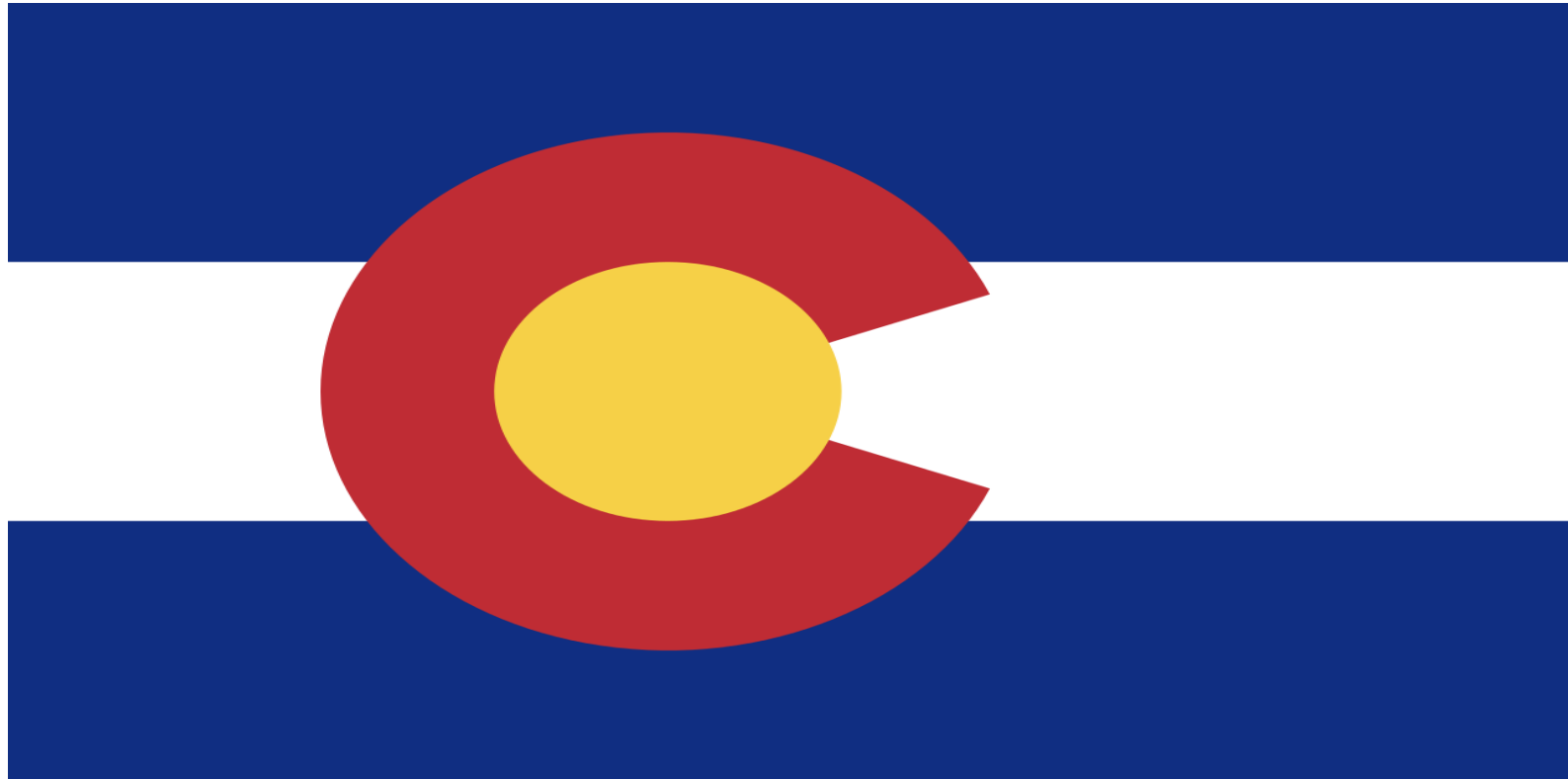


# Bankruptcy Filing Trends in Colorado



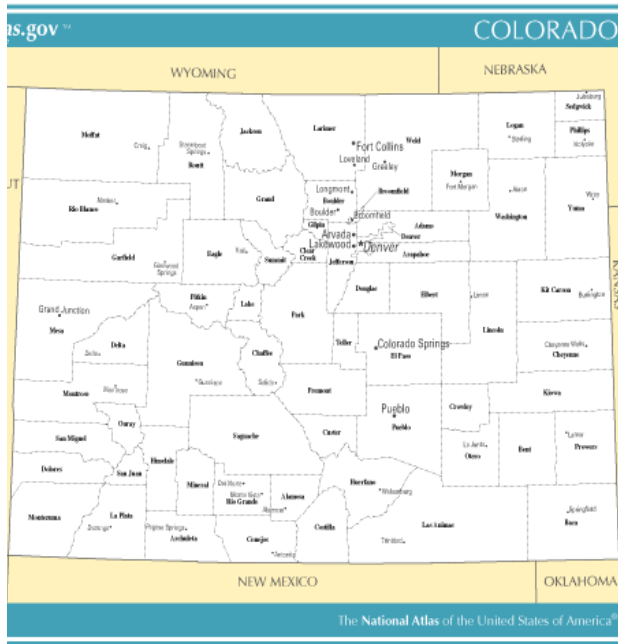
Prepared by: **The American Bankruptcy Institute**  
<http://www.abi.org/>



AMERICAN  
BANKRUPTCY  
INSTITUTE

Updated  
February 2021

# Colorado



## State at a Glance

	Colorado	National
<b>Population (7/1/2019)</b>	<b>5,758,736</b>	<b>328,239,523</b>
- Change since 2010	14.5%	6.3%
- Foreign Born	9.8%	13.6%
<b>Size (Square Miles)</b>	<b>103,642</b>	<b>3,531,905</b>
<b>Median Household Income</b>	<b>\$72,331</b>	<b>\$62,843</b>
<b>Persons per Household</b>	<b>2.56</b>	<b>2.62</b>
<b>Per Capita Income</b>	<b>\$38,226</b>	<b>\$34,103</b>
<b>Median Home Value</b>	<b>\$343,300</b>	<b>\$217,500</b>
<b>Homeownership Rate</b>	<b>65.2%</b>	<b>64.0%</b>
<b>High School Graduate (or Higher)</b>	<b>91.7%</b>	<b>88.0%</b>
<b>College Graduate (or Higher)</b>	<b>40.9%</b>	<b>32.1%</b>
<b>Disabled</b>	<b>7.2%</b>	<b>8.6%</b>
<b>No Health Insurance</b>	<b>9.3%</b>	<b>9.5%</b>
<b>In Poverty</b>	<b>9.3%</b>	<b>10.5%</b>
<b>Source: U.S. Census Bureau January 2021</b>		

Prepared by: The American Bankruptcy Institute

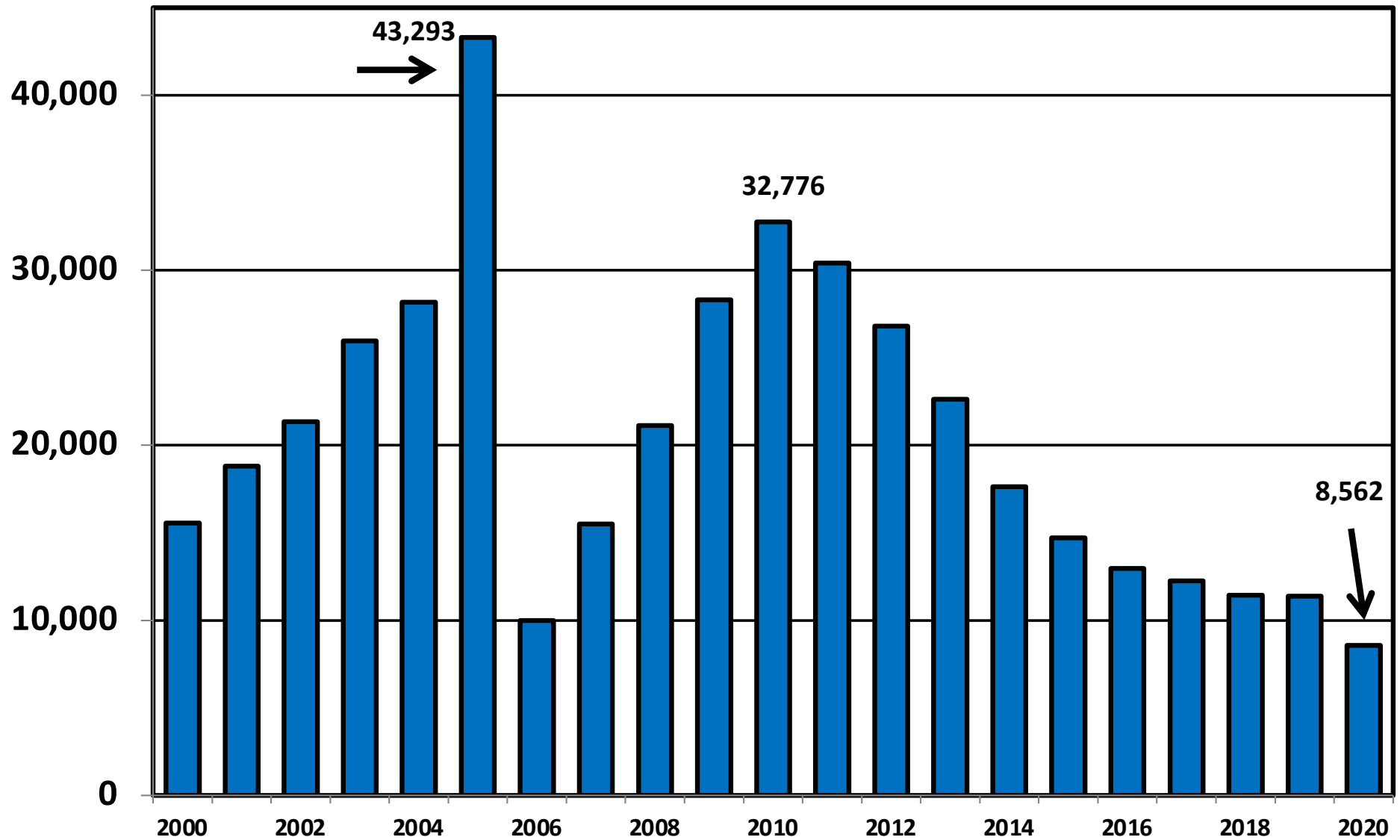
<http://www.abi.org>

**Bankruptcy Filings in Colorado**  
**Calendar Years 2000 - 2020**

<b>Year</b>	<b>Total</b>	<b>Chapter 7</b>	<b>Chapter 11</b>	<b>Chapter 13</b>	<b>Other Cases</b>
<b>2000</b>	<b>15,558</b>	<b>13,126</b>	<b>75</b>	<b>2,344</b>	<b>13</b>
<b>2001</b>	<b>18,800</b>	<b>16,303</b>	<b>105</b>	<b>2,389</b>	<b>3</b>
<b>2002</b>	<b>21,359</b>	<b>18,630</b>	<b>113</b>	<b>2,607</b>	<b>9</b>
<b>2003</b>	<b>25,956</b>	<b>23,230</b>	<b>79</b>	<b>2,638</b>	<b>9</b>
<b>2004</b>	<b>28,169</b>	<b>25,159</b>	<b>104</b>	<b>2,902</b>	<b>4</b>
<b>2005</b>	<b>43,293</b>	<b>40,355</b>	<b>81</b>	<b>2,851</b>	<b>6</b>
<b>2006</b>	<b>9,979</b>	<b>8,189</b>	<b>76</b>	<b>1,712</b>	<b>2</b>
<b>2007</b>	<b>15,499</b>	<b>12,962</b>	<b>75</b>	<b>2,461</b>	<b>1</b>
<b>2008</b>	<b>21,136</b>	<b>18,033</b>	<b>122</b>	<b>2,976</b>	<b>5</b>
<b>2009</b>	<b>28,304</b>	<b>23,955</b>	<b>187</b>	<b>4,152</b>	<b>10</b>
<b>2010</b>	<b>32,776</b>	<b>27,371</b>	<b>182</b>	<b>5,214</b>	<b>9</b>
<b>2011</b>	<b>30,409</b>	<b>25,225</b>	<b>139</b>	<b>5,043</b>	<b>2</b>
<b>2012</b>	<b>26,809</b>	<b>22,111</b>	<b>147</b>	<b>4,547</b>	<b>4</b>
<b>2013</b>	<b>22,629</b>	<b>18,971</b>	<b>113</b>	<b>3,537</b>	<b>8</b>
<b>2014</b>	<b>17,632</b>	<b>14,823</b>	<b>73</b>	<b>2,730</b>	<b>6</b>
<b>2015</b>	<b>14,725</b>	<b>11,936</b>	<b>85</b>	<b>2,699</b>	<b>5</b>
<b>2016</b>	<b>12,957</b>	<b>10,219</b>	<b>81</b>	<b>2,657</b>	<b>0</b>
<b>2017</b>	<b>12,268</b>	<b>9,528</b>	<b>88</b>	<b>2,650</b>	<b>2</b>
<b>2018</b>	<b>11,445</b>	<b>8,882</b>	<b>63</b>	<b>2,492</b>	<b>8</b>
<b>2019</b>	<b>11,377</b>	<b>8,798</b>	<b>66</b>	<b>2,510</b>	<b>3</b>
<b>2020</b>	<b>8,562</b>	<b>6,854</b>	<b>81</b>	<b>1,618</b>	<b>9</b>

# District of Colorado

## Total Bankruptcy Cases Filed 2000 - 2020



# Total Filings Relative to Population 2000 - 2020



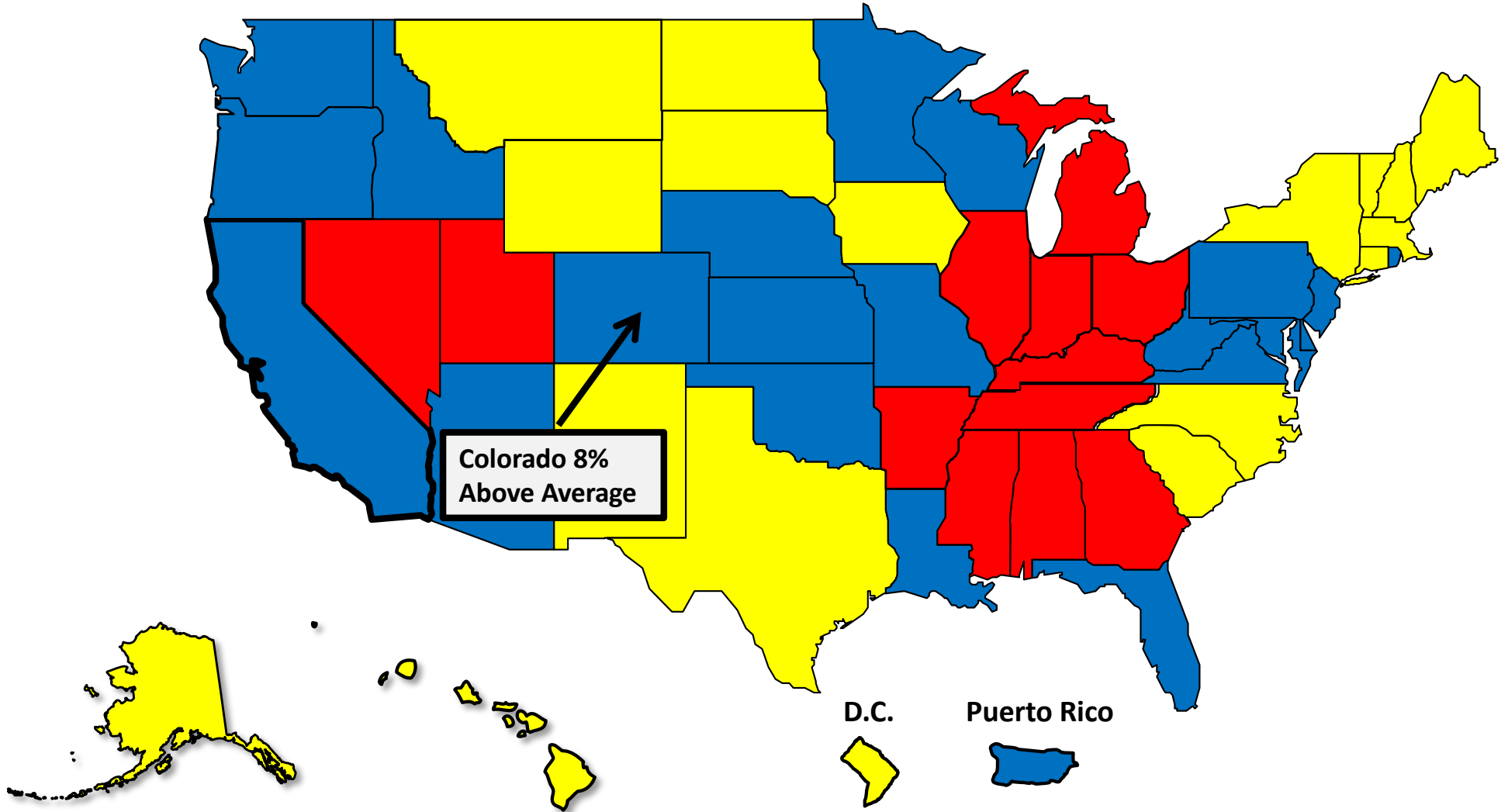
More than 25%  
Above Average



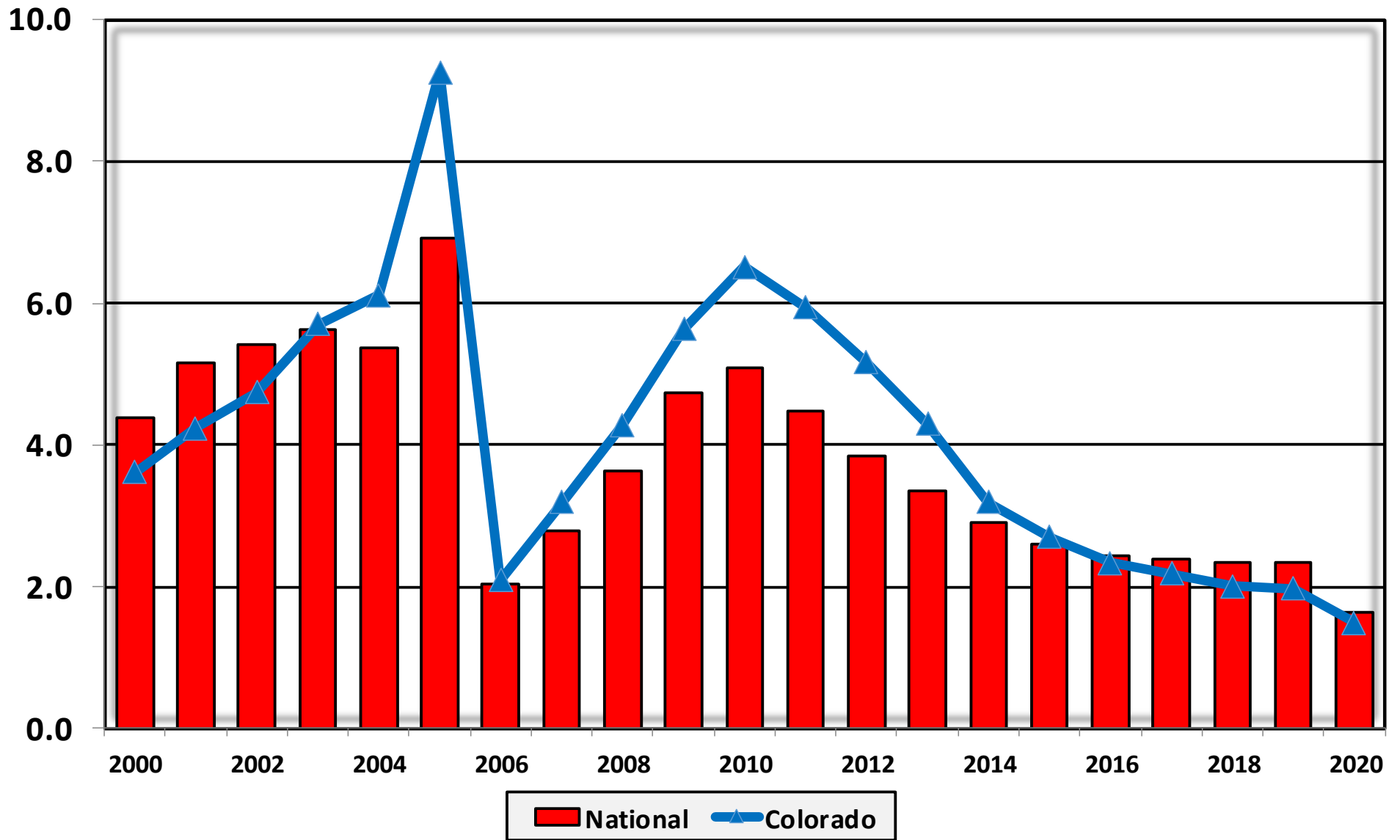
Within 25%  
of Average



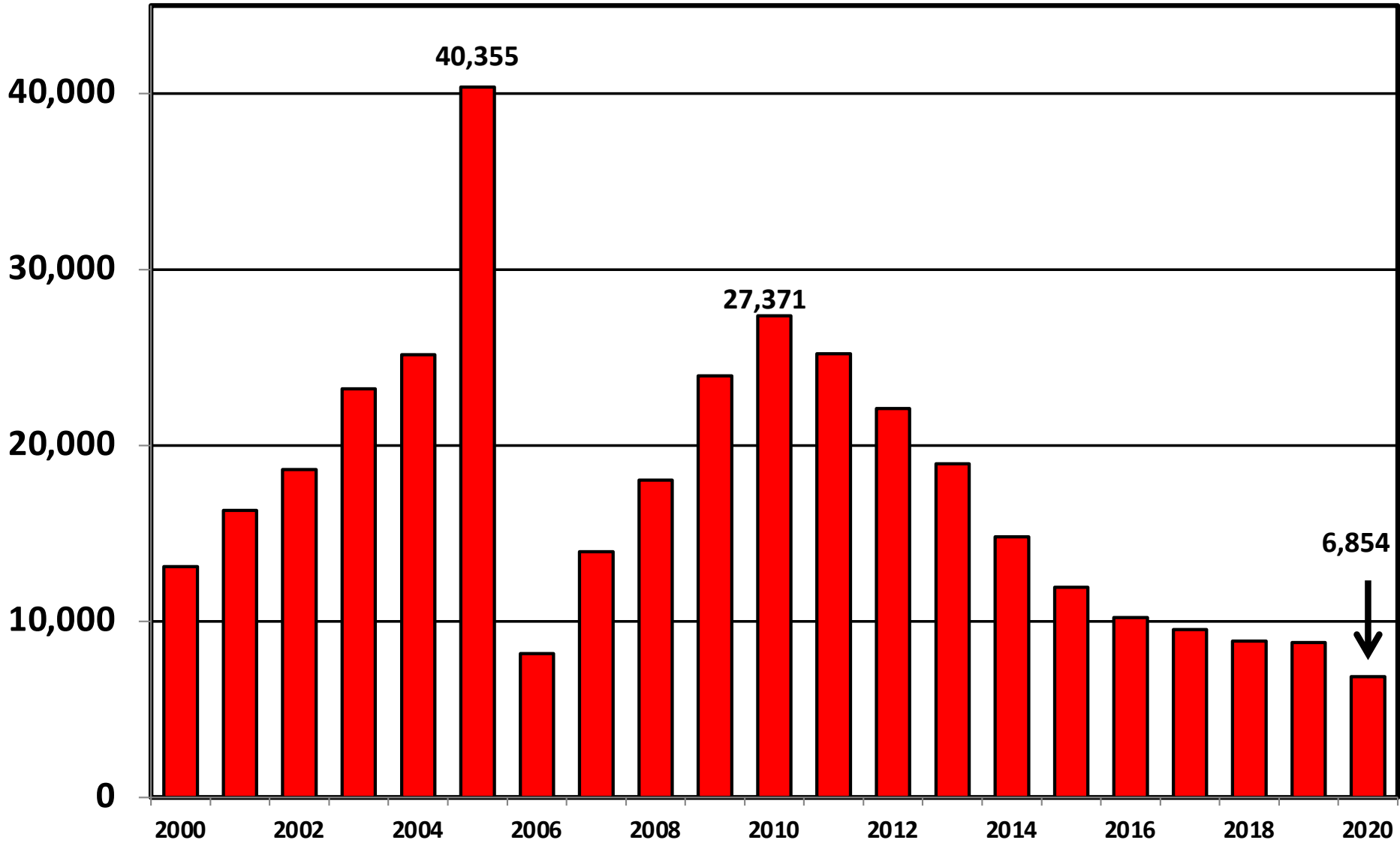
More than 25%  
Below Average



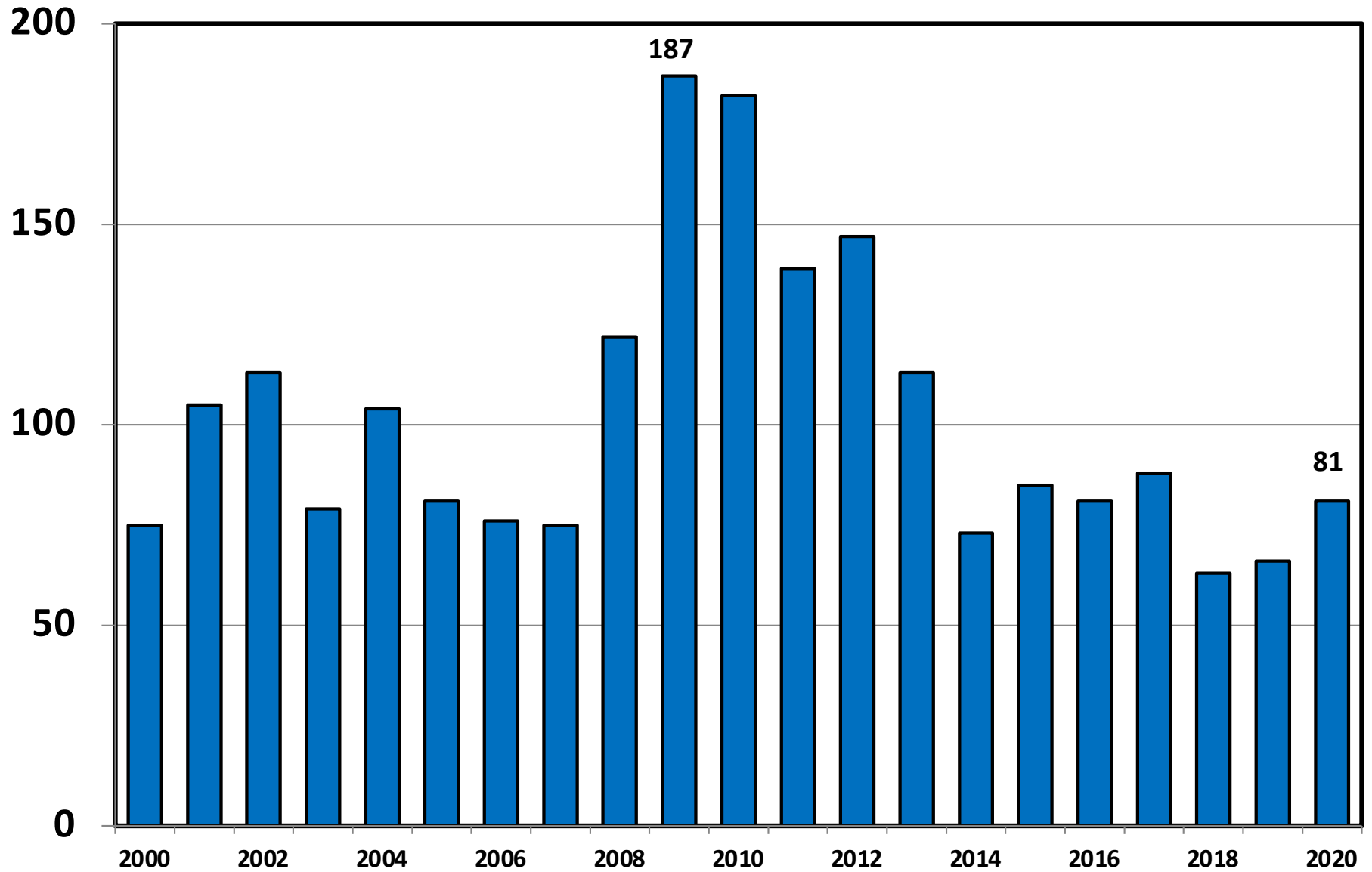
# Bankruptcy Filings per 1,000 Population Colorado vs. National Average 2000 – 2020



# District of Colorado Chapter 7 Cases Filed 2000 - 2020

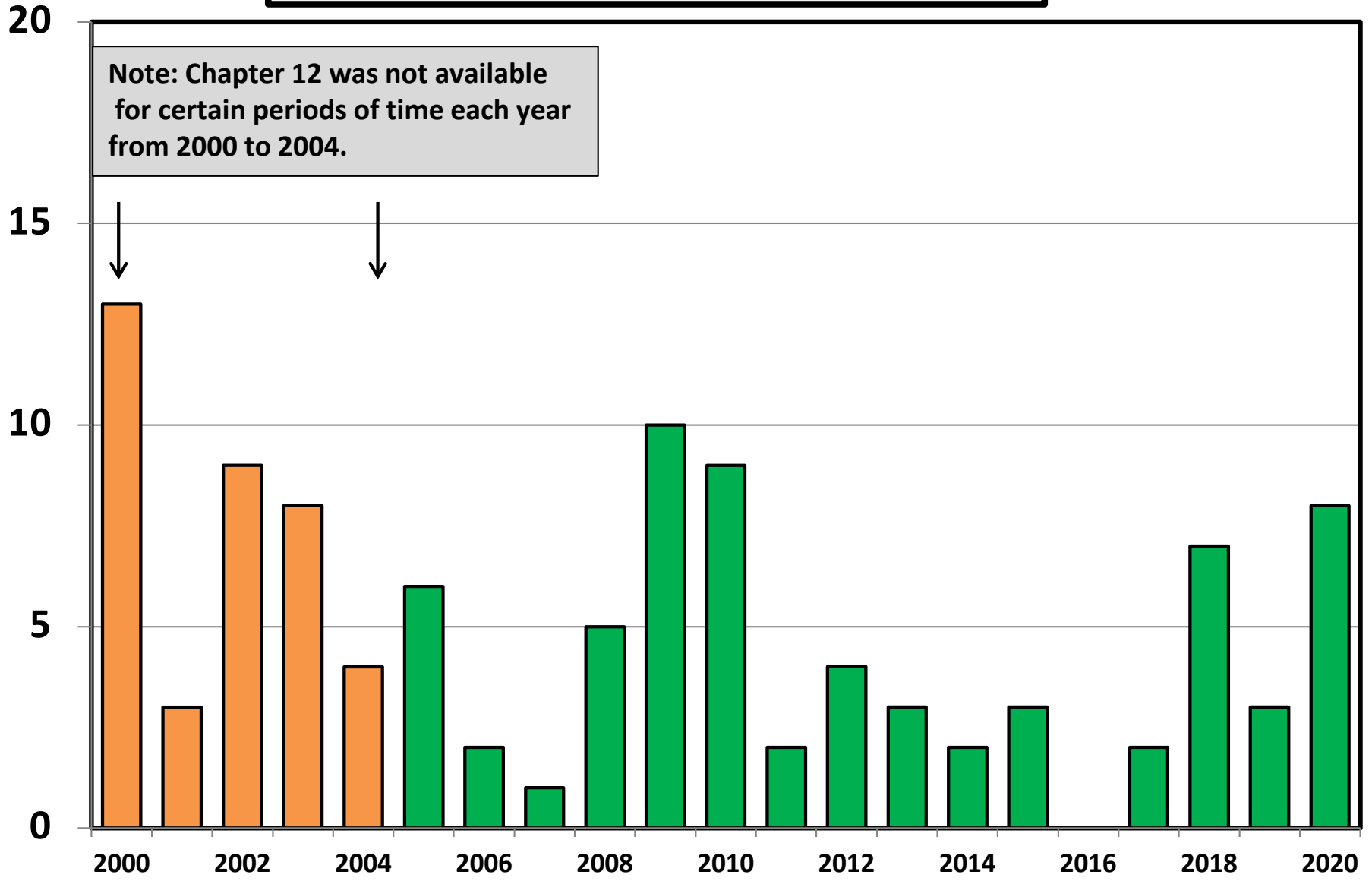


# Chapter 11 Cases Filed in Colorado 2000 - 2020

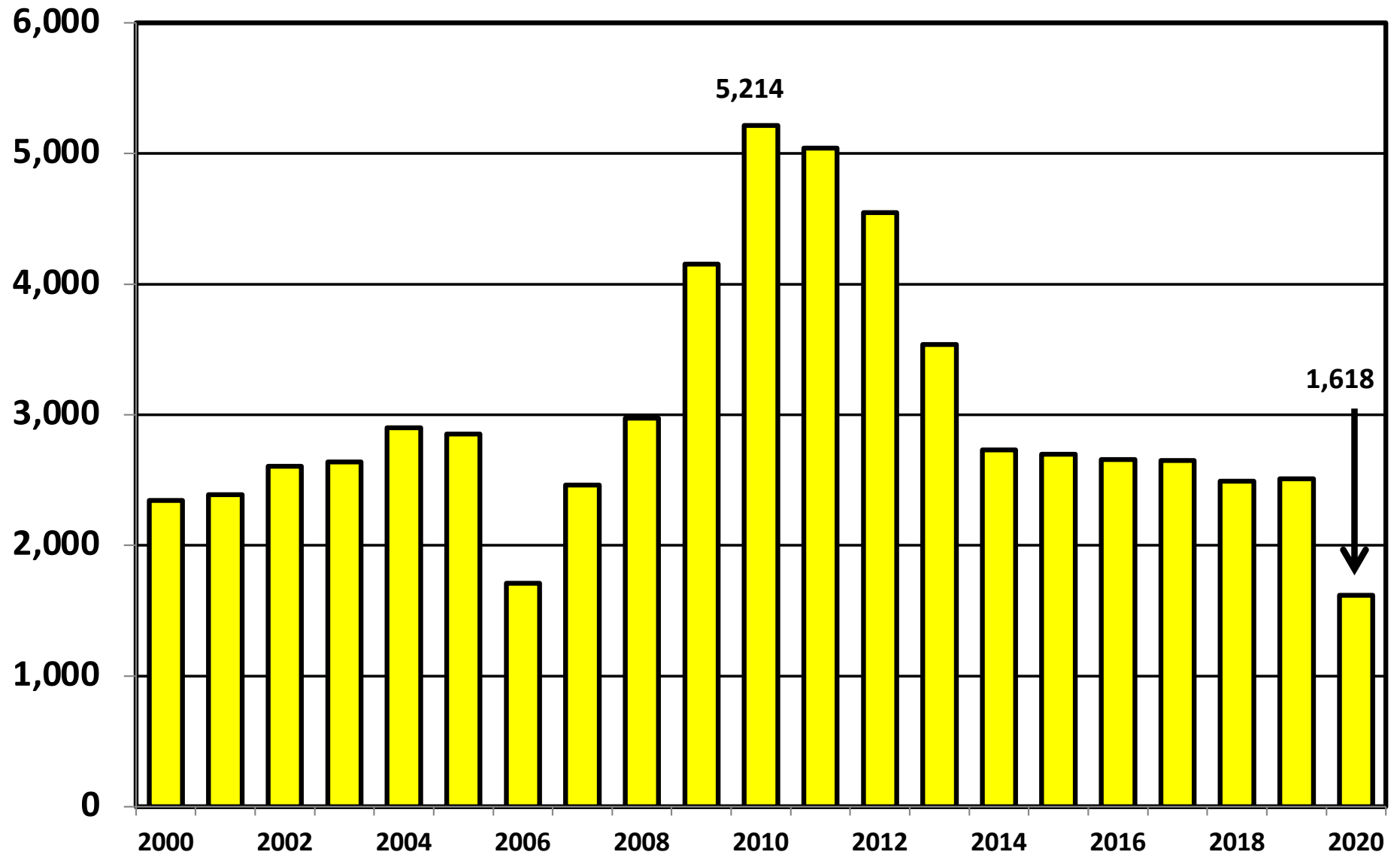




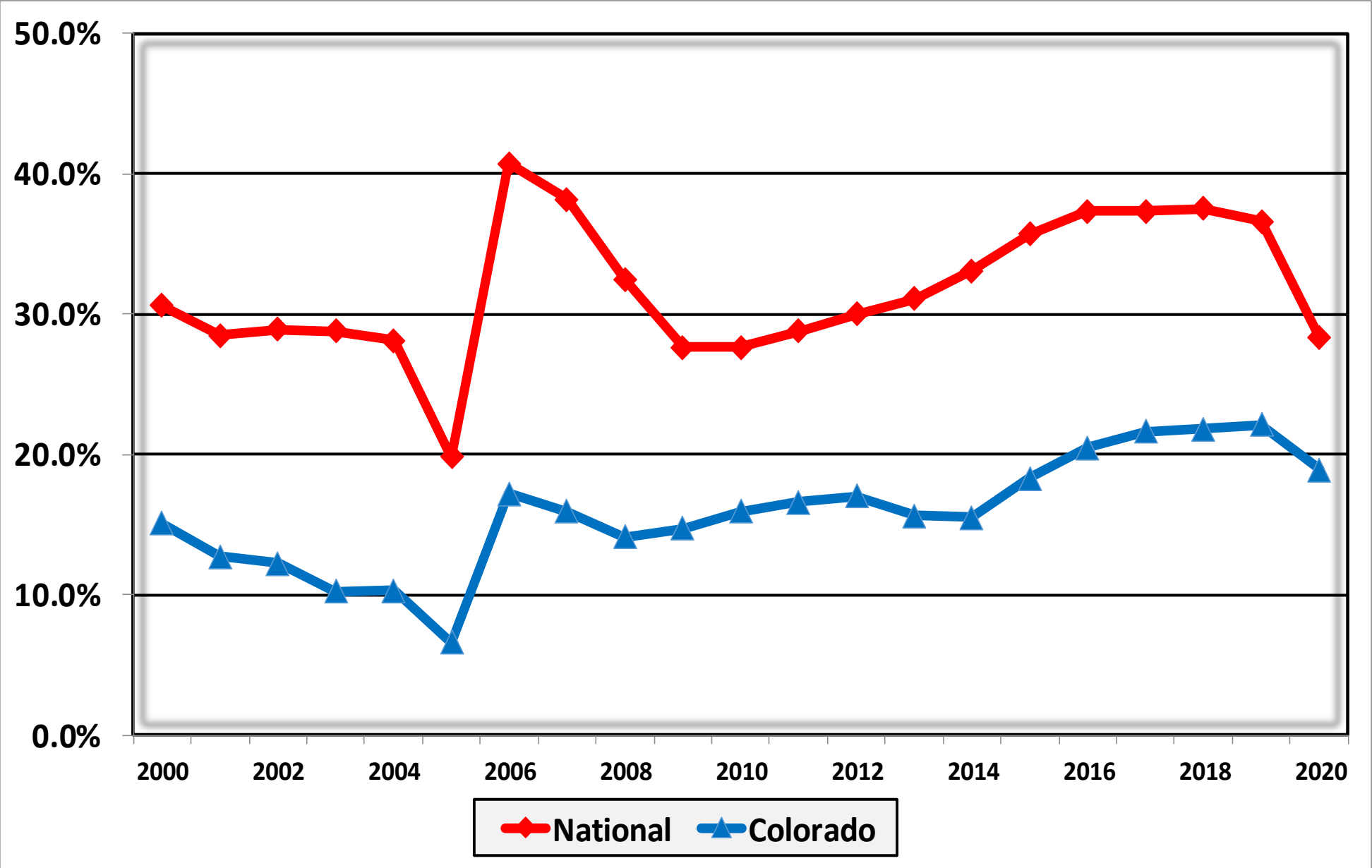
# Chapter 12 Cases Filed in Colorado 2000 - 2020



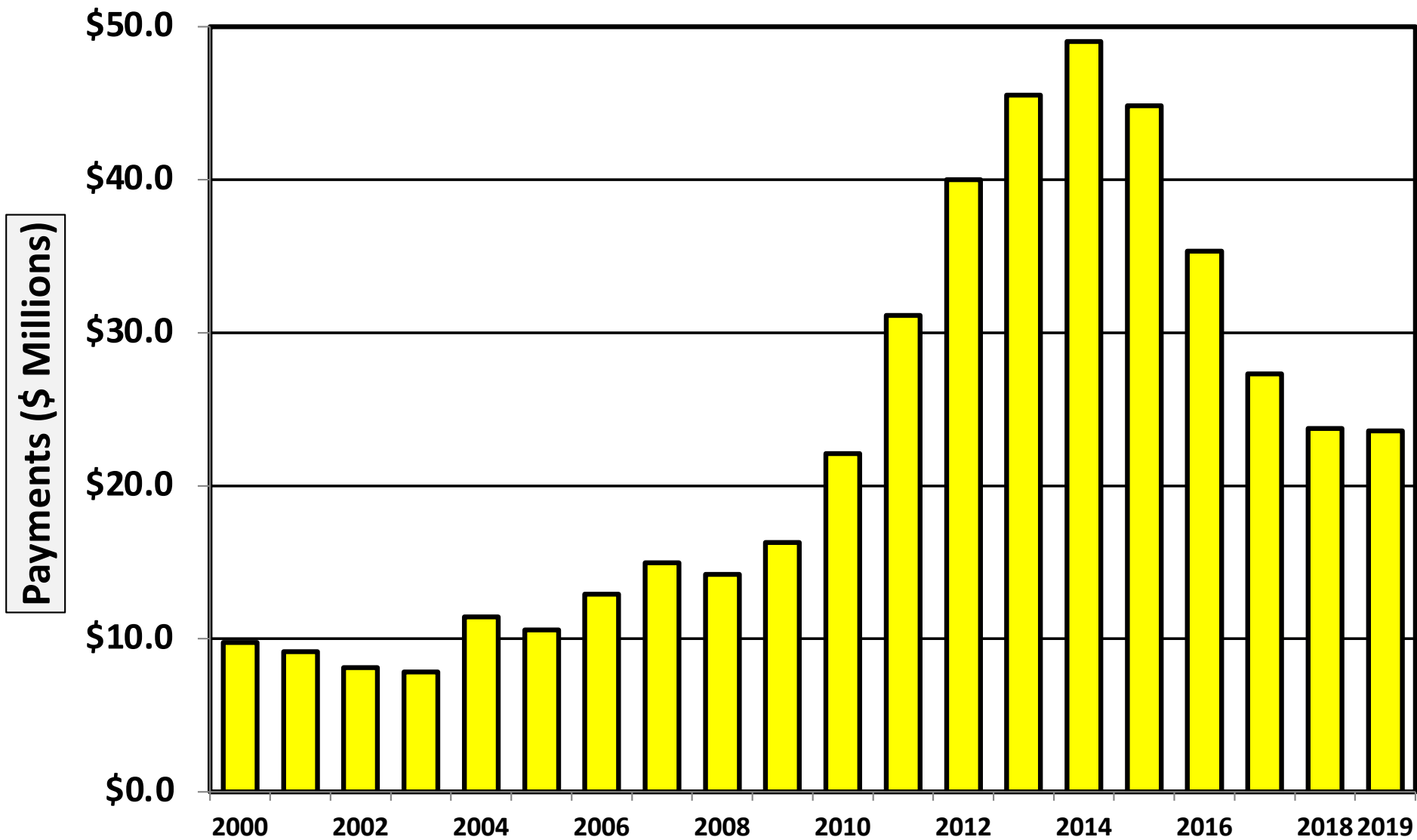
# District of Colorado Chapter 13 Cases Filed 2000 - 2020



**Percent of Cases Filed as Chapter 13  
Calendar Years 2000 - 2020**

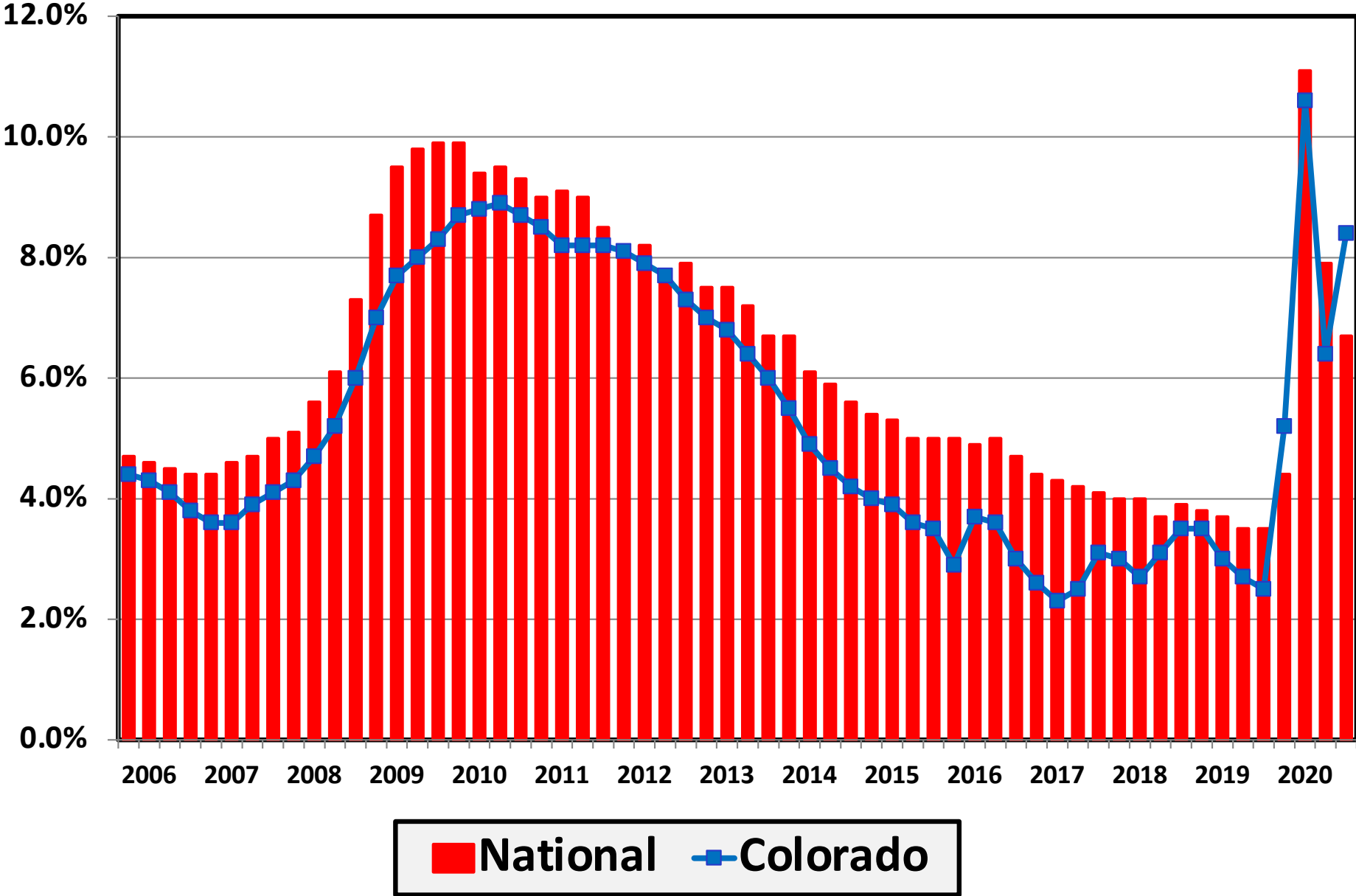


**Chapter 13 Cases in Colorado**  
Amount (in Millions) Paid to Unsecured Creditors  
Fiscal Years 2000 - 2019



Source: Executive Office for United States Trustees

# Unemployment Rate By Quarter 2006 - 2020

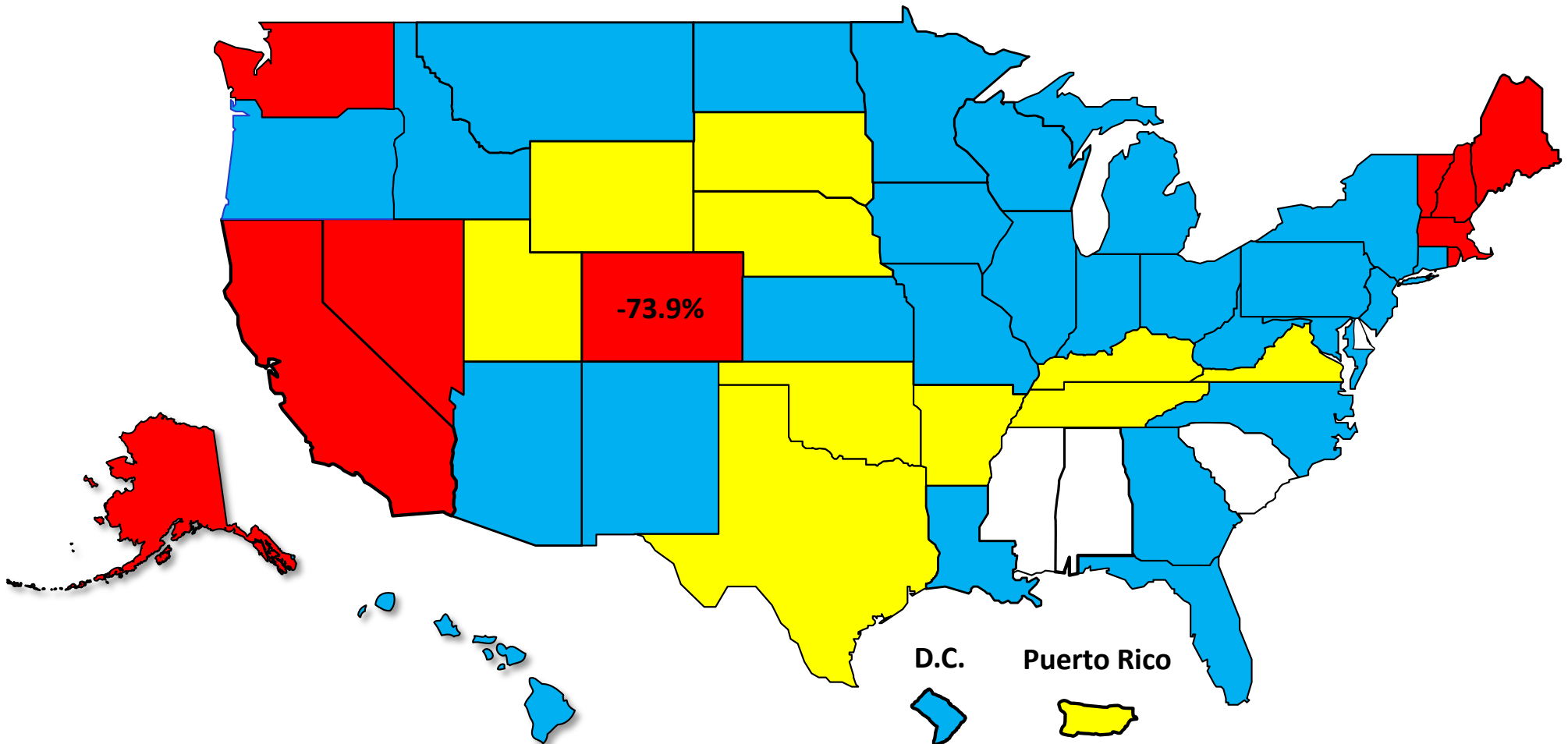


Source: Bureau of Labor Statistics

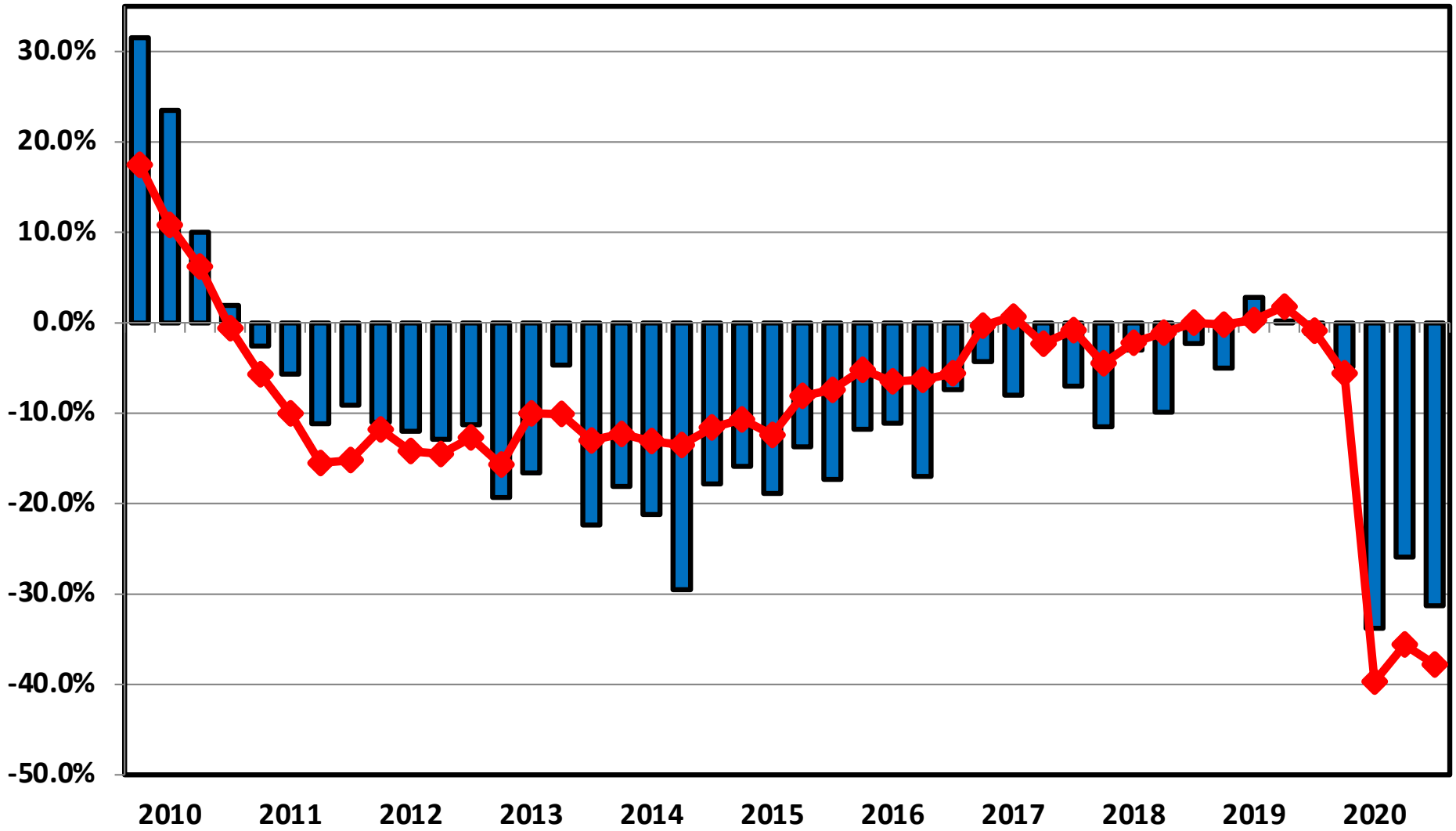
# Percent Change in Total Filings Calendar Year 2020 Compared to 2010

(National Average = 65.8% Decrease)

## Amount of Decrease



**Filing Trends By Quarter Colorado vs. National Average  
(Percent Change From Same Quarter One Year Prior)**



**Colorado** **National**







AMERICAN  
BANKRUPTCY  
INSTITUTE

[www.abi.org](http://www.abi.org)