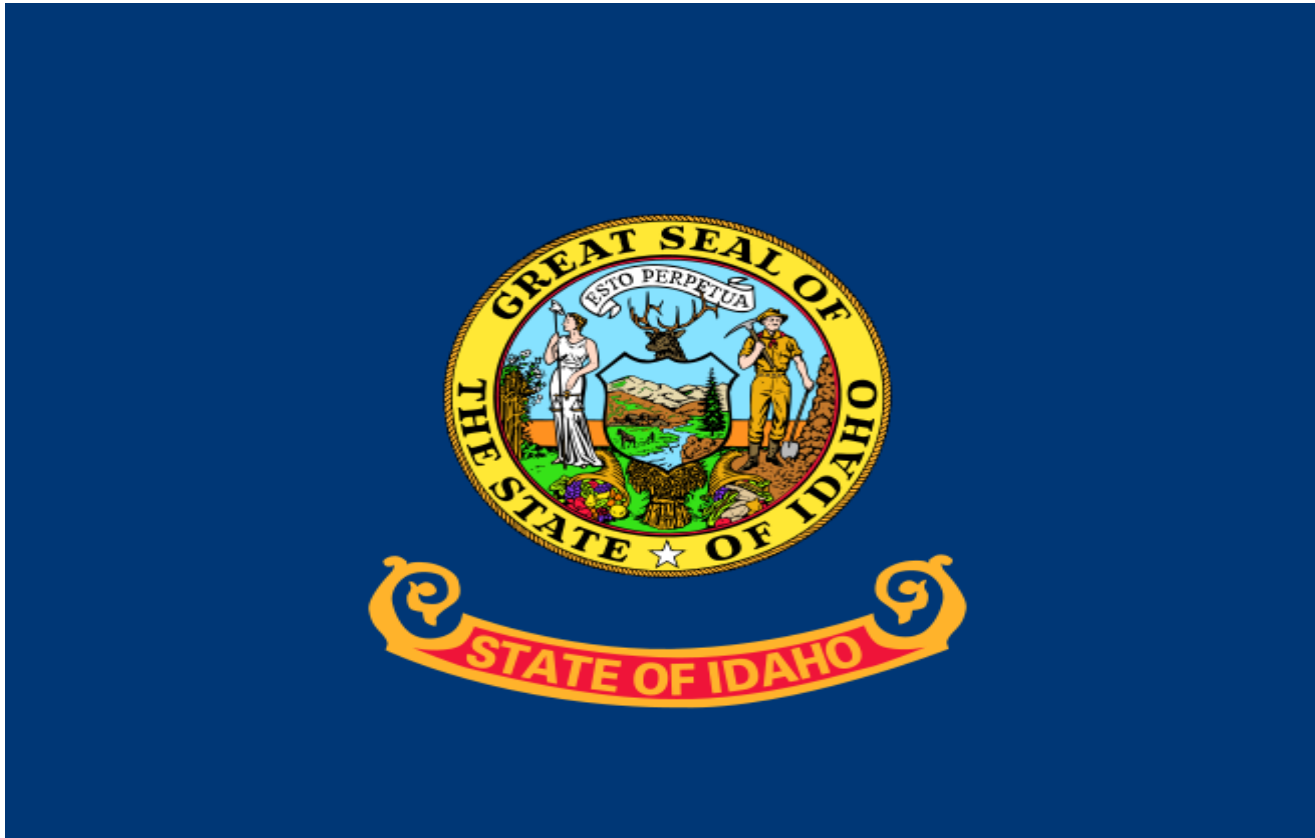


# Bankruptcy Filing Trends in Idaho



Prepared by: **The American Bankruptcy Institute**

<http://www.abi.org/>



AMERICAN  
BANKRUPTCY  
INSTITUTE

Updated  
February 2021

# Idaho



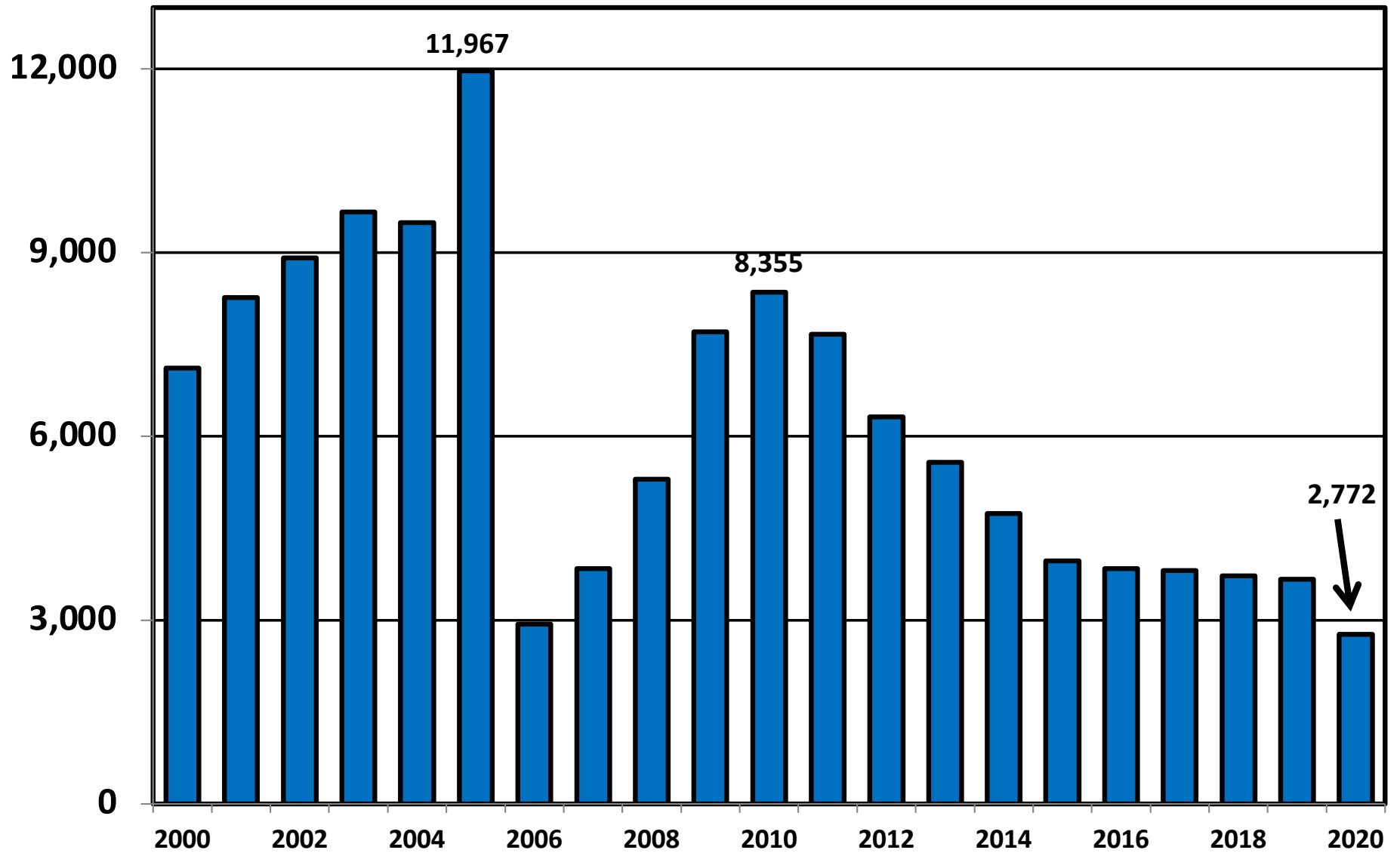
State at a Glance		
	Idaho	National
<b>Population (7/1/2019)</b>	<b>1,787,065</b>	<b>328,239,523</b>
- Change since 2010	14.0%	6.3%
- Foreign Born	6.0%	13.6%
<b>Size (Square Miles)</b>	<b>82,643</b>	<b>3,531,905</b>
<b>Median Household Income</b>	<b>\$55,785</b>	<b>\$62,843</b>
<b>Persons per Household</b>	<b>2.68</b>	<b>2.62</b>
<b>Per Capita Income</b>	<b>\$27,970</b>	<b>\$34,103</b>
<b>Median Home Value</b>	<b>\$212,300</b>	<b>\$217,500</b>
<b>Homeownership Rate</b>	<b>70.0%</b>	<b>64.0%</b>
<b>High School Graduate (or Higher)</b>	<b>90.8%</b>	<b>88.0%</b>
<b>College Graduate (or Higher)</b>	<b>27.6%</b>	<b>32.1%</b>
<b>Disabled</b>	<b>9.6%</b>	<b>8.6%</b>
<b>No Health Insurance</b>	<b>12.8%</b>	<b>9.5%</b>
<b>In Poverty</b>	<b>11.2%</b>	<b>10.5%</b>
<b>Source: U.S. Census Bureau January 2021</b>		

**Bankruptcy Filings in Idaho  
Calendar Years 2000 - 2020**

<b>Year</b>	<b>Total</b>	<b>Chapter 7</b>	<b>Chapter 11</b>	<b>Chapter 13</b>	<b>Other Cases</b>
2000	7,119	5,721	47	1,327	24
2001	8,265	7,012	81	1,163	9
2002	8,913	7,632	53	1,214	14
2003	9,660	8,368	44	1,225	23
2004	9,488	8,208	28	1,251	1
2005	11,967	10,642	18	1,298	9
2006	2,931	2,335	15	570	11
2007	3,838	3,074	20	739	5
2008	5,300	4,450	26	815	9
2009	7,704	6,789	51	854	10
2010	8,355	7,284	62	997	12
2011	7,666	6,722	54	875	15
2012	6,322	5,612	33	665	12
2013	5,574	5,067	24	478	5
2014	4,742	4,246	19	471	6
2015	3,970	3,544	18	404	4
2016	3,840	3,404	14	416	6
2017	3,808	3,348	22	432	6
2018	3,724	3,300	24	394	6
2019	3,665	3,295	14	346	10
2020	2,772	2,503	21	238	10

# District of Idaho

## Total Bankruptcy Cases Filed 2000 -2020



# Total Filings Relative to Population 2000 - 2020



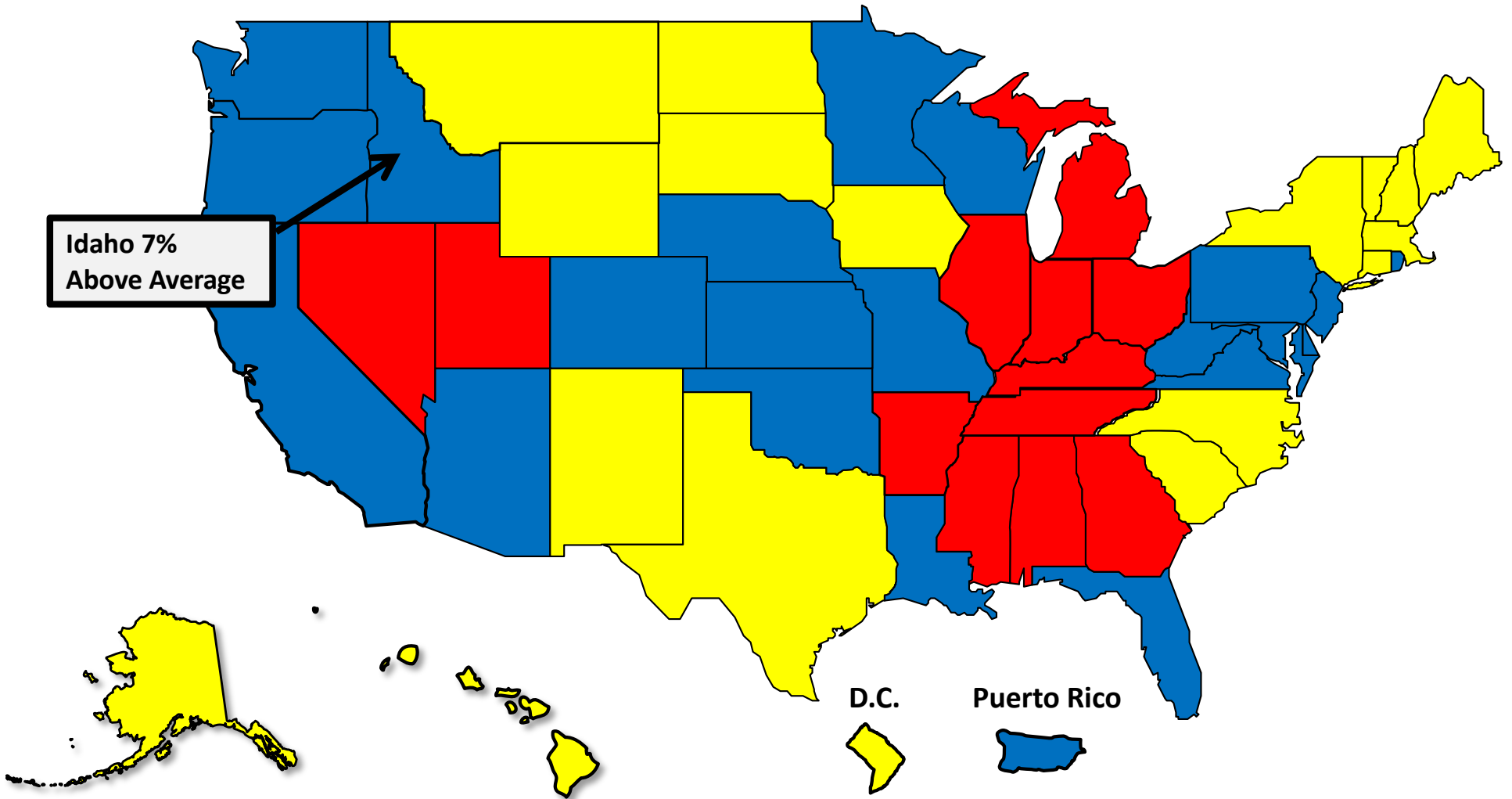
More than 25%  
Above Average



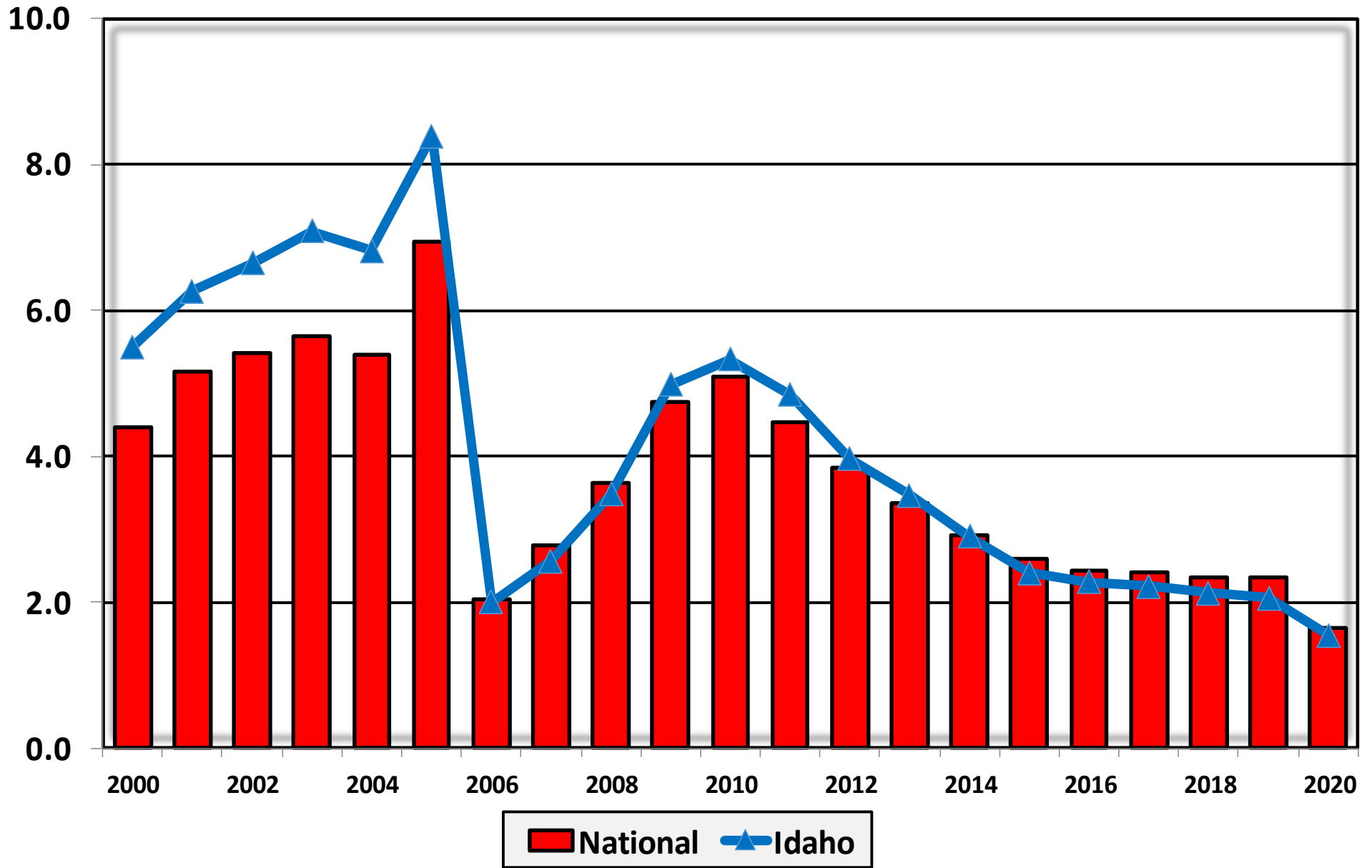
Within 25%  
of Average



More than 25%  
Below Average

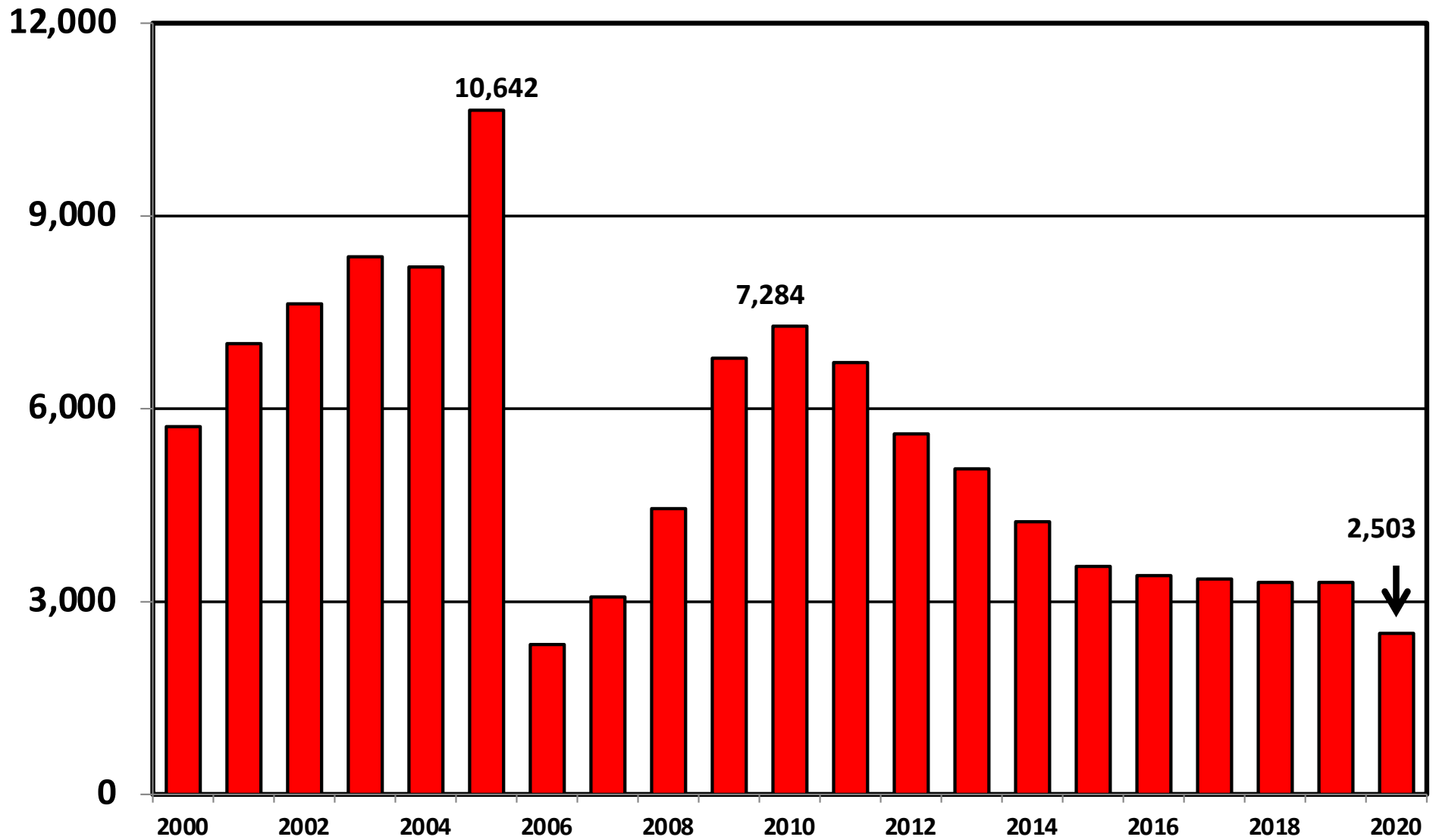


**Bankruptcy Filings per 1,000 Population  
Idaho vs. National Average 2000 - 2020**

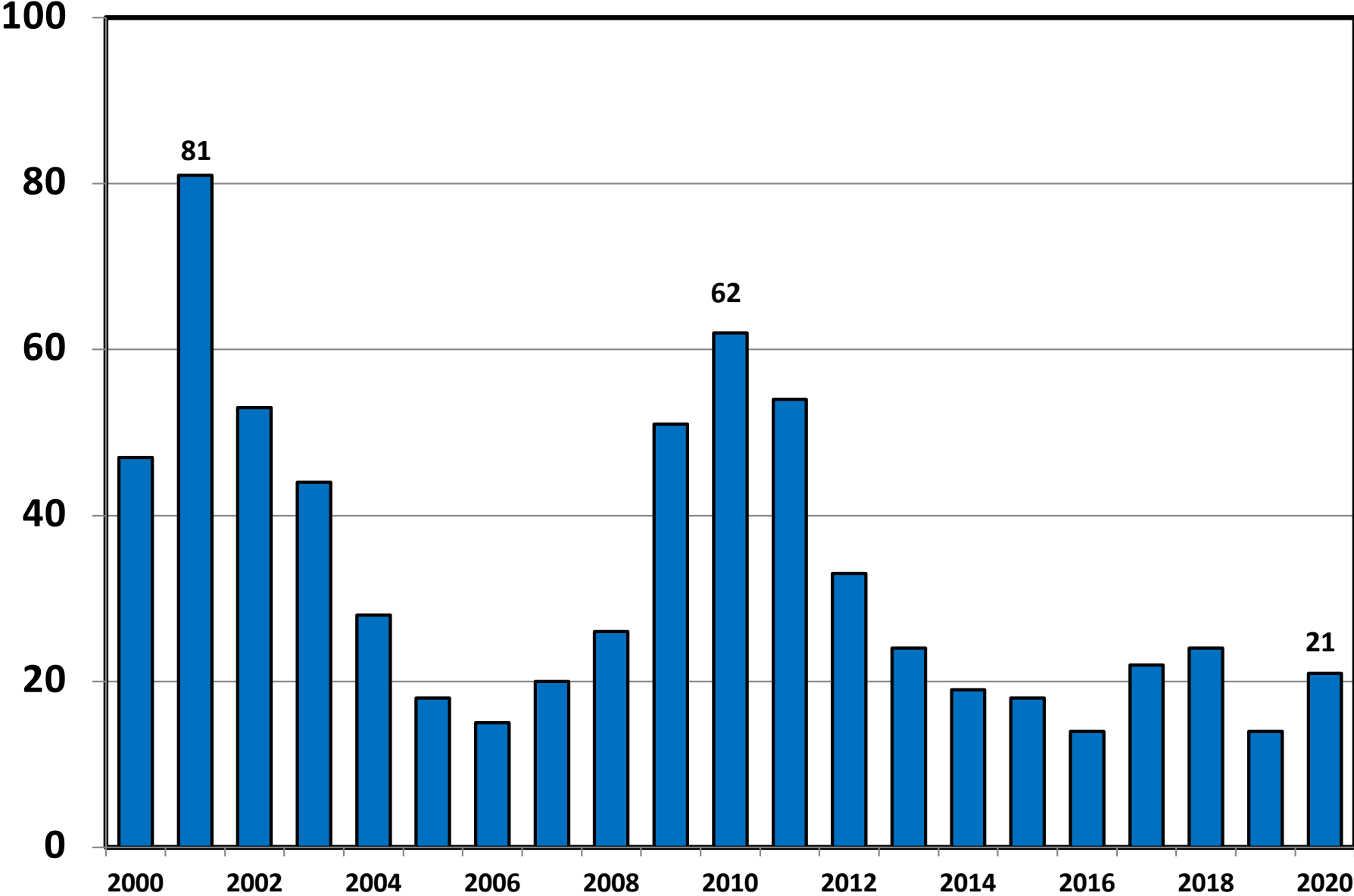


# District of Idaho

## Chapter 7 Cases Filed 2000 - 2020

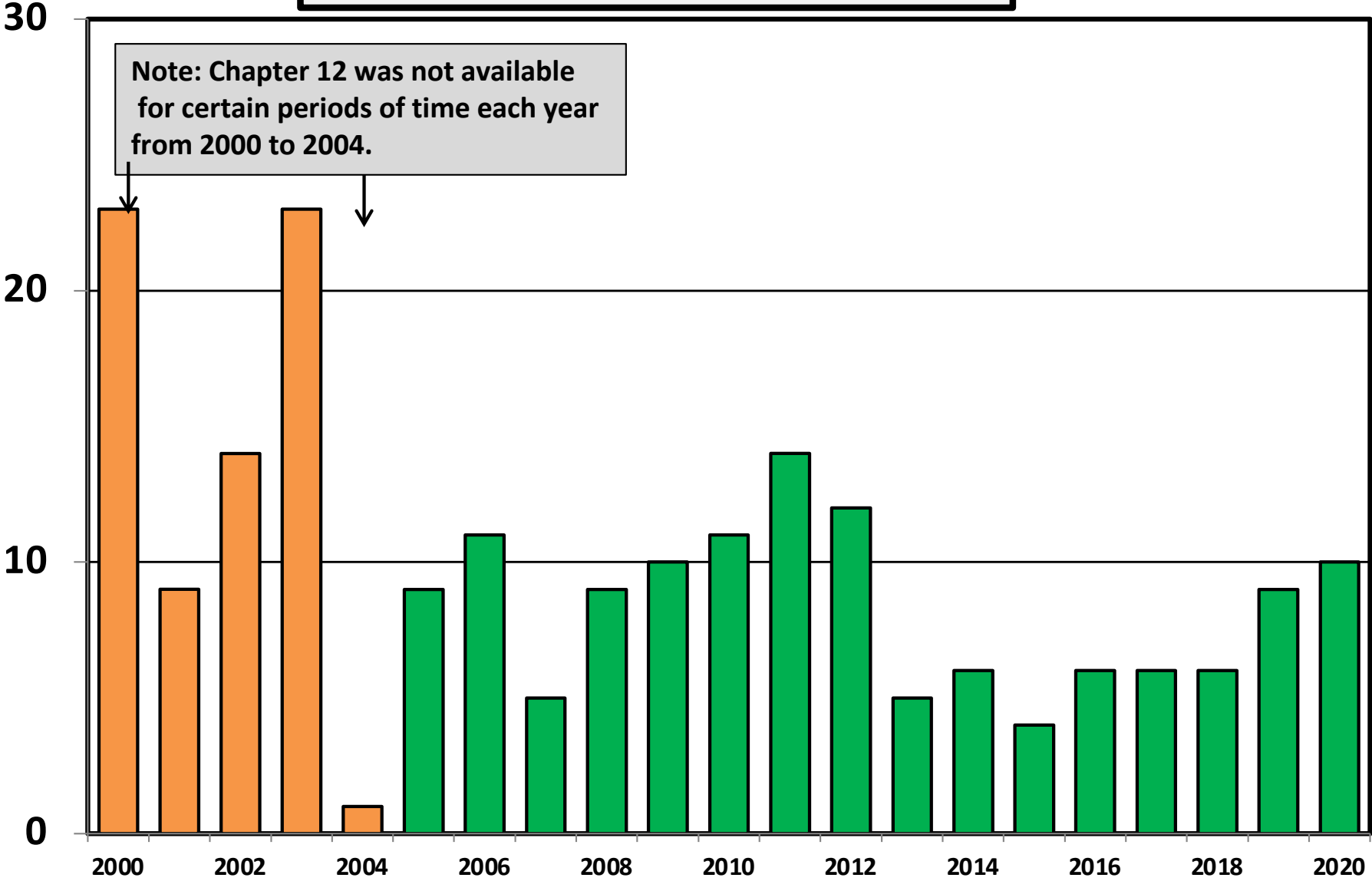


# Chapter 11 Cases Filed in Idaho 2000 - 2020



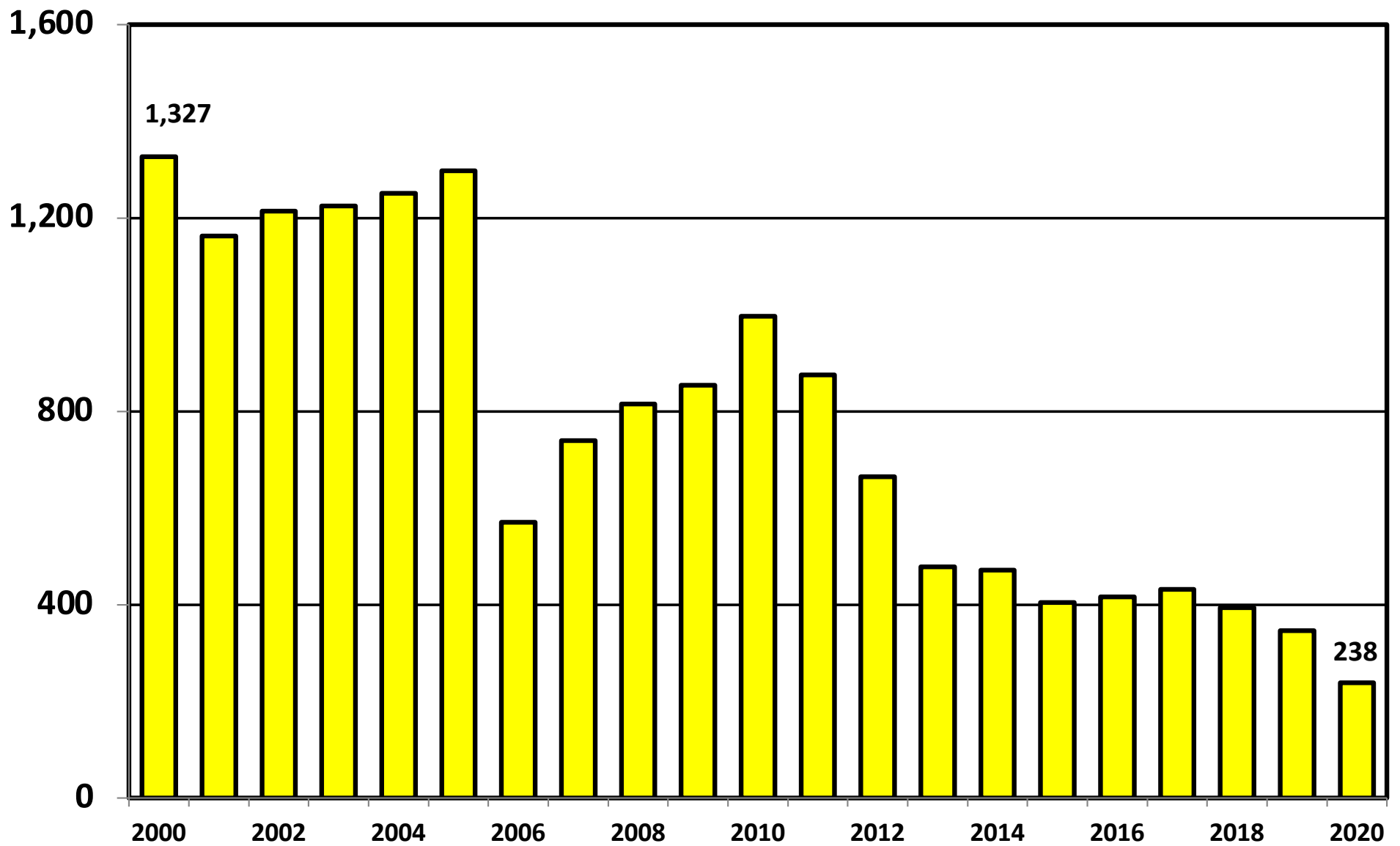


# Chapter 12 Cases Filed in Idaho 2000 - 2020

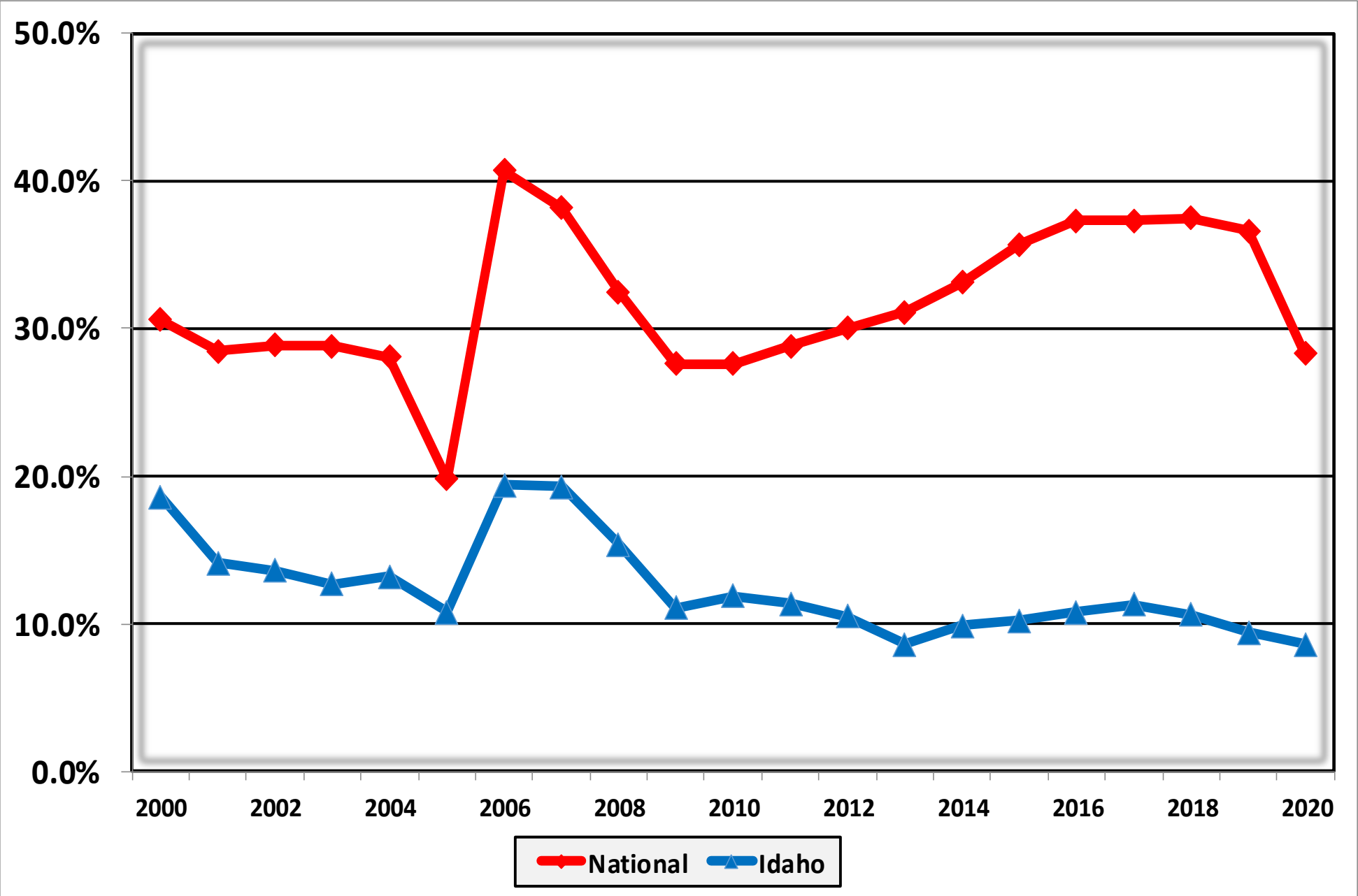


# District of Idaho

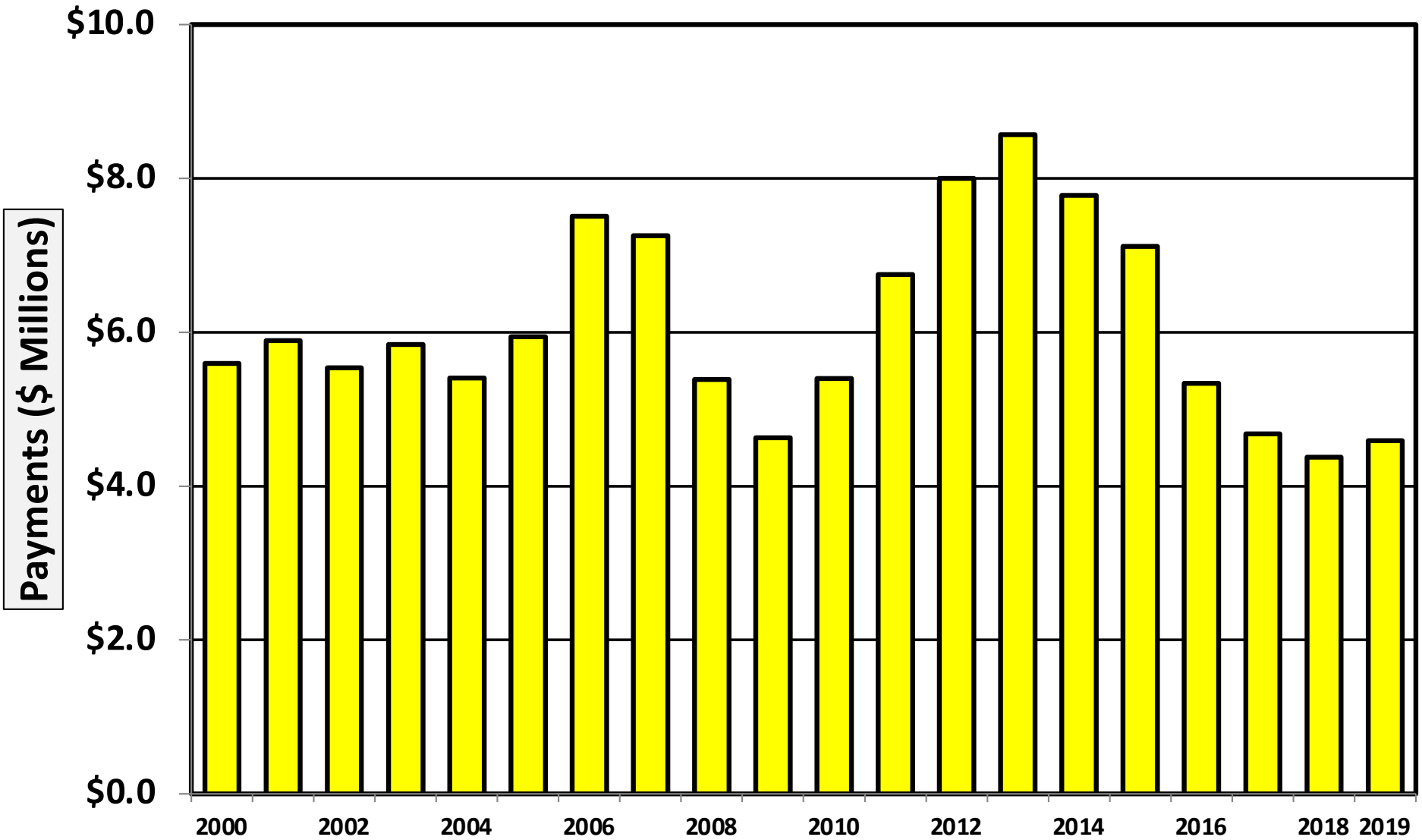
## Chapter 13 Cases Filed 2000 - 2020



**Percent of Cases Filed as Chapter 13  
Calendar Years 2000 - 2020**

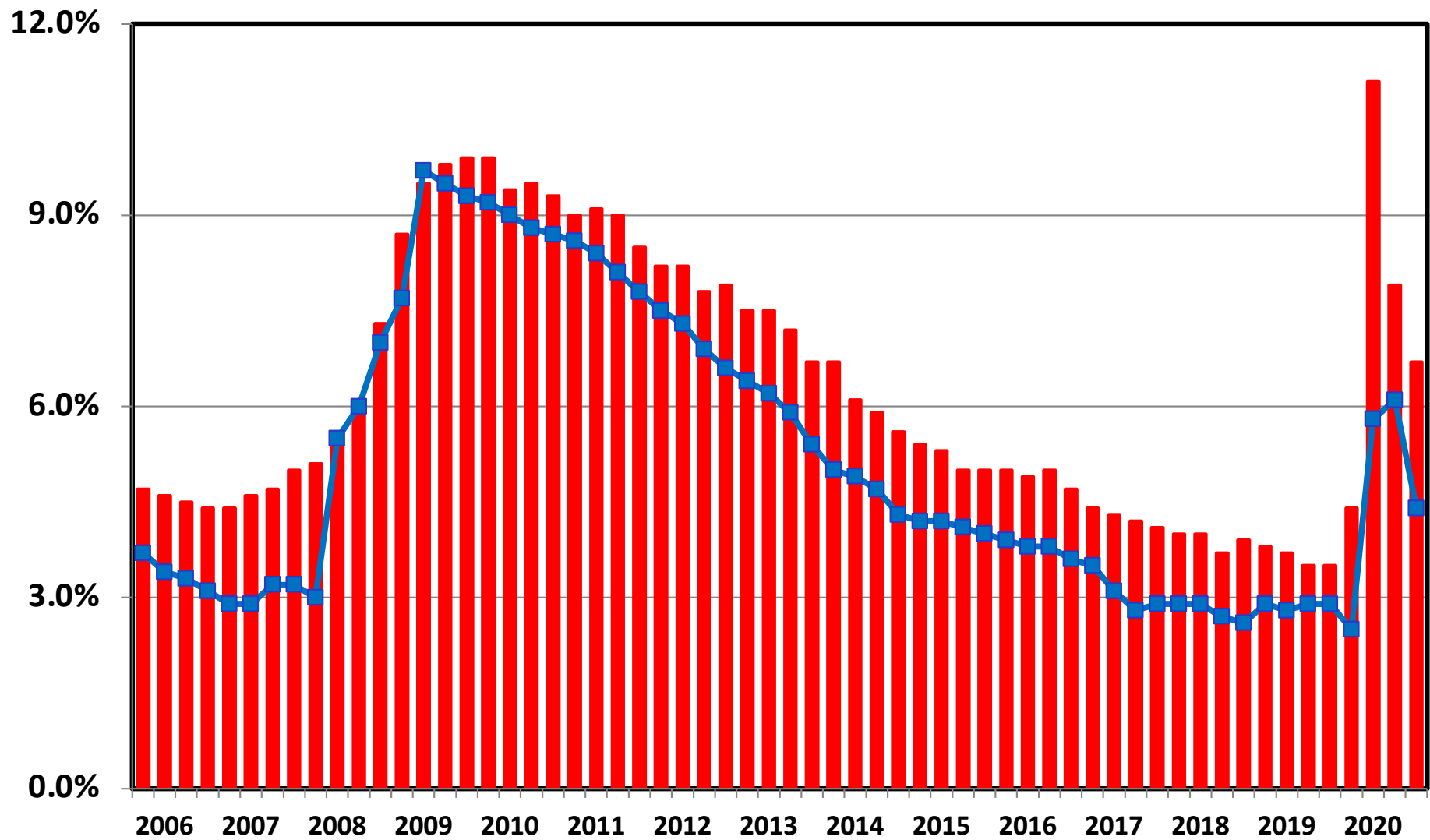


**Chapter 13 Cases in Idaho**  
Amount (in Millions) Paid to Unsecured Creditors  
Fiscal Years 2000 - 2019



Source: Executive Office for United States Trustees

# Unemployment Rate By Quarter 2006 - 2020



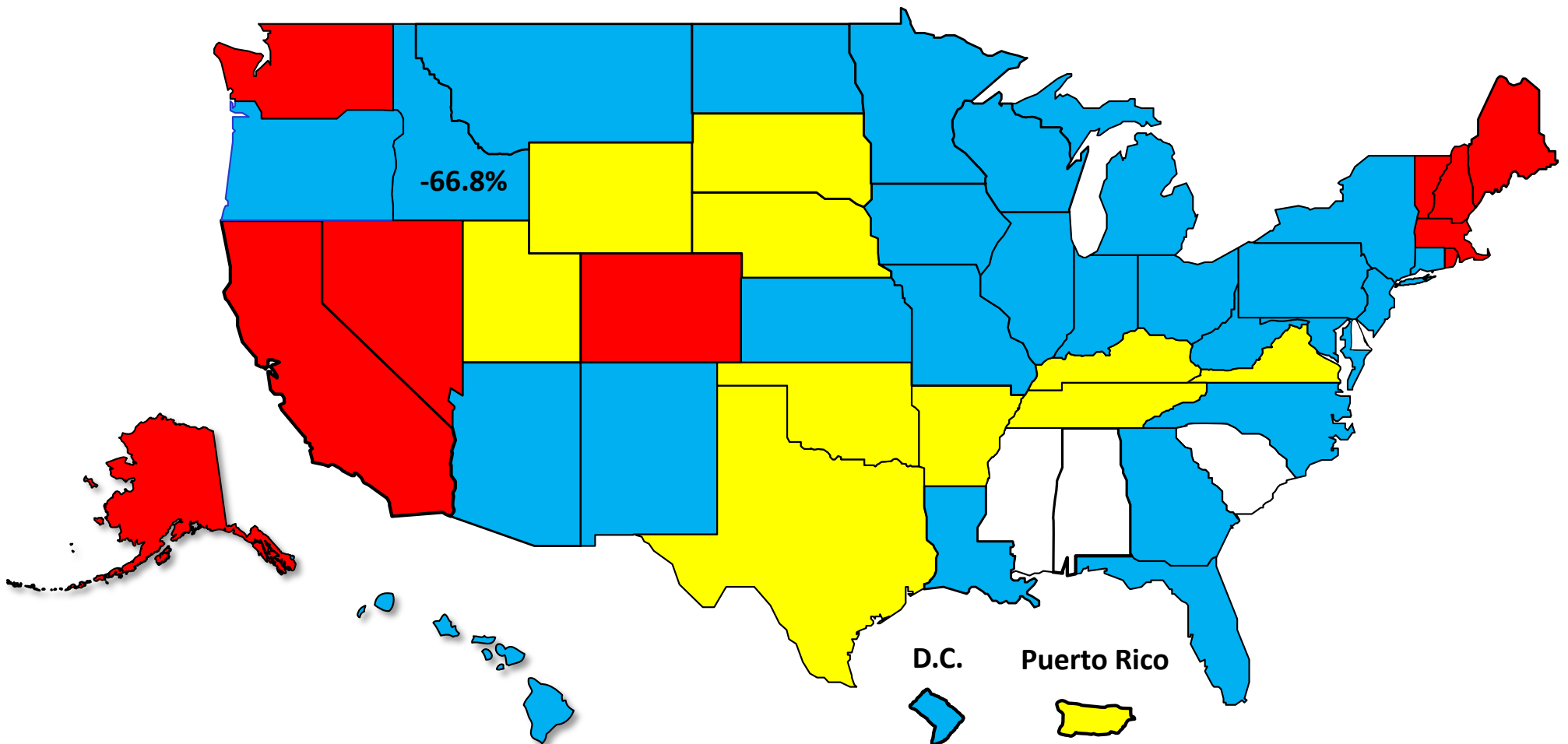
**■ National ■ Idaho**

Source: Bureau of Labor Statistics

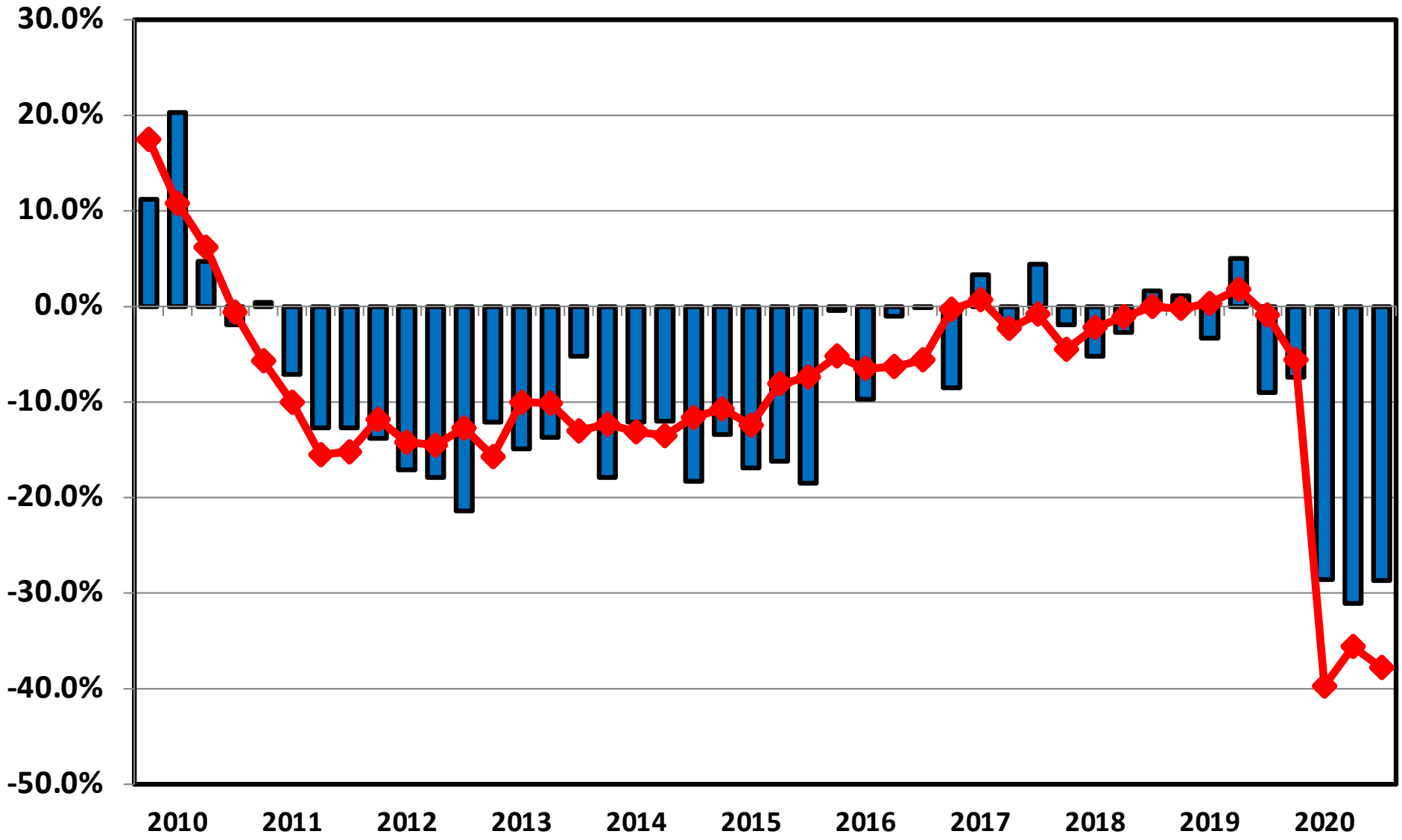
# Percent Change in Total Filings Calendar Year 2020 Compared to 2010

(National Average = 65.8% Decrease)

## Amount of Decrease



**Filing Trends By Quarter Idaho vs. National Average  
(Percent Change From Same Quarter One Year Prior)**



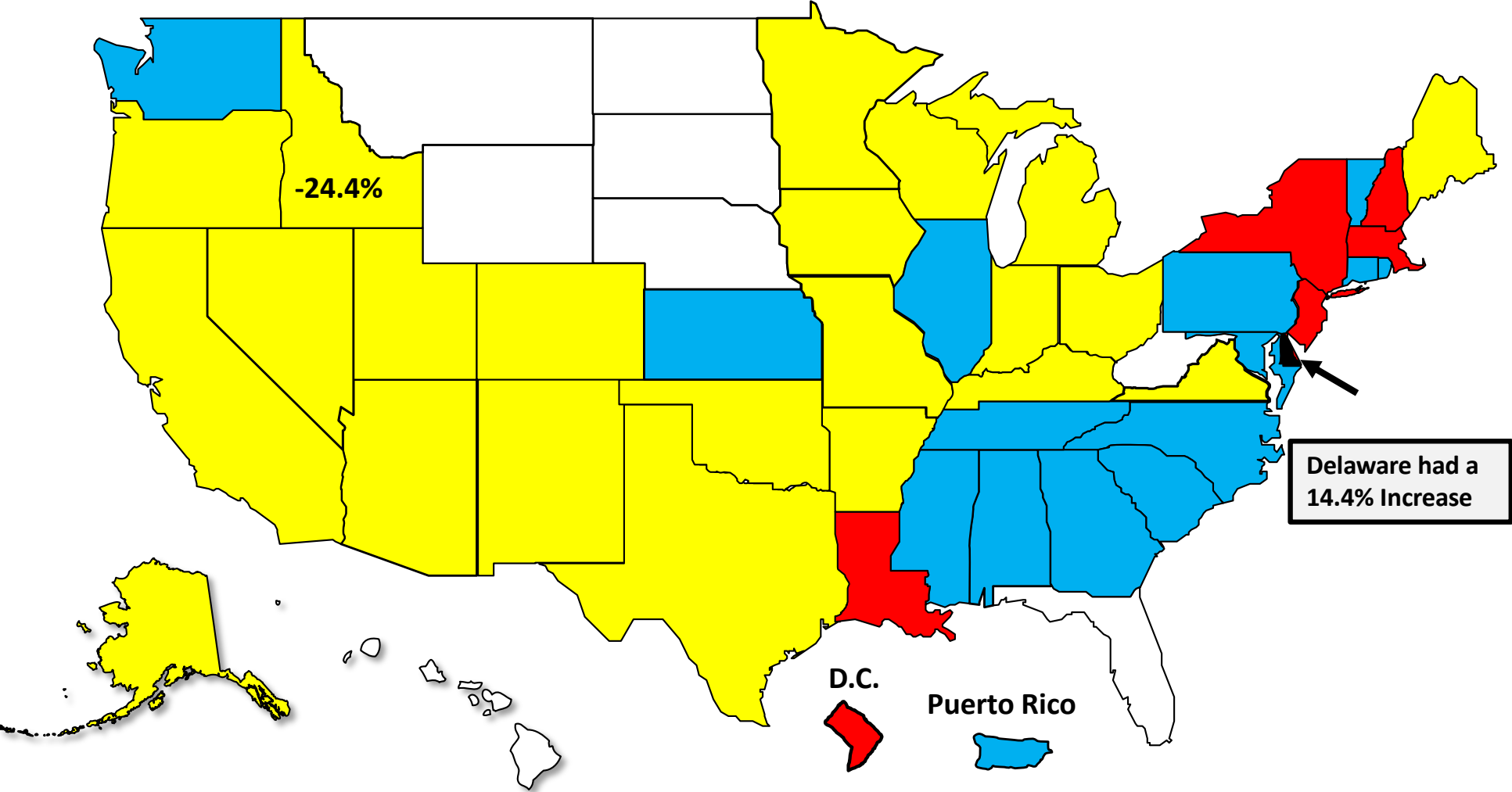
**Idaho**   **National**

# Bankruptcy Filing Trends

Calendar Year 2020 vs. 2019

National Average = 29.7 % Decrease

- Decline Under 20%
- Decline 20% – 30%
- Decline 30% - 40%
- Decline Over 40%







AMERICAN  
BANKRUPTCY  
INSTITUTE

[www.abi.org](http://www.abi.org)