

Bankruptcy Filing Trends in Indiana



Prepared by: **The American Bankruptcy Institute**

<http://www.abi.org/>



AMERICAN
BANKRUPTCY
INSTITUTE

Updated
February 2021

Indiana



State at a Glance		
	Indiana	National
Population (7/1/2019)	6,732,219	328,239,523
- Change since 2010	3.8%	6.3%
- Foreign Born	5.2%	13.6%
Size (Square Miles)	35,826	3,531,905
Median Household Income	\$56,303	\$62,843
Persons per Household	2.52	2.62
Per Capita Income	\$29,777	\$34,103
Median Home Value	\$141,700	\$217,500
Homeownership Rate	69.1%	64.0%
High School Graduate (or Higher)	88.8%	88.0%
College Graduate (or Higher)	26.5%	32.1%
Disabled	9.7%	8.6%
No Health Insurance	10.3%	9.5%
In Poverty	11.9%	10.5%
Source: U.S. Census Bureau January 2021		

Prepared by: The American Bankruptcy Institute

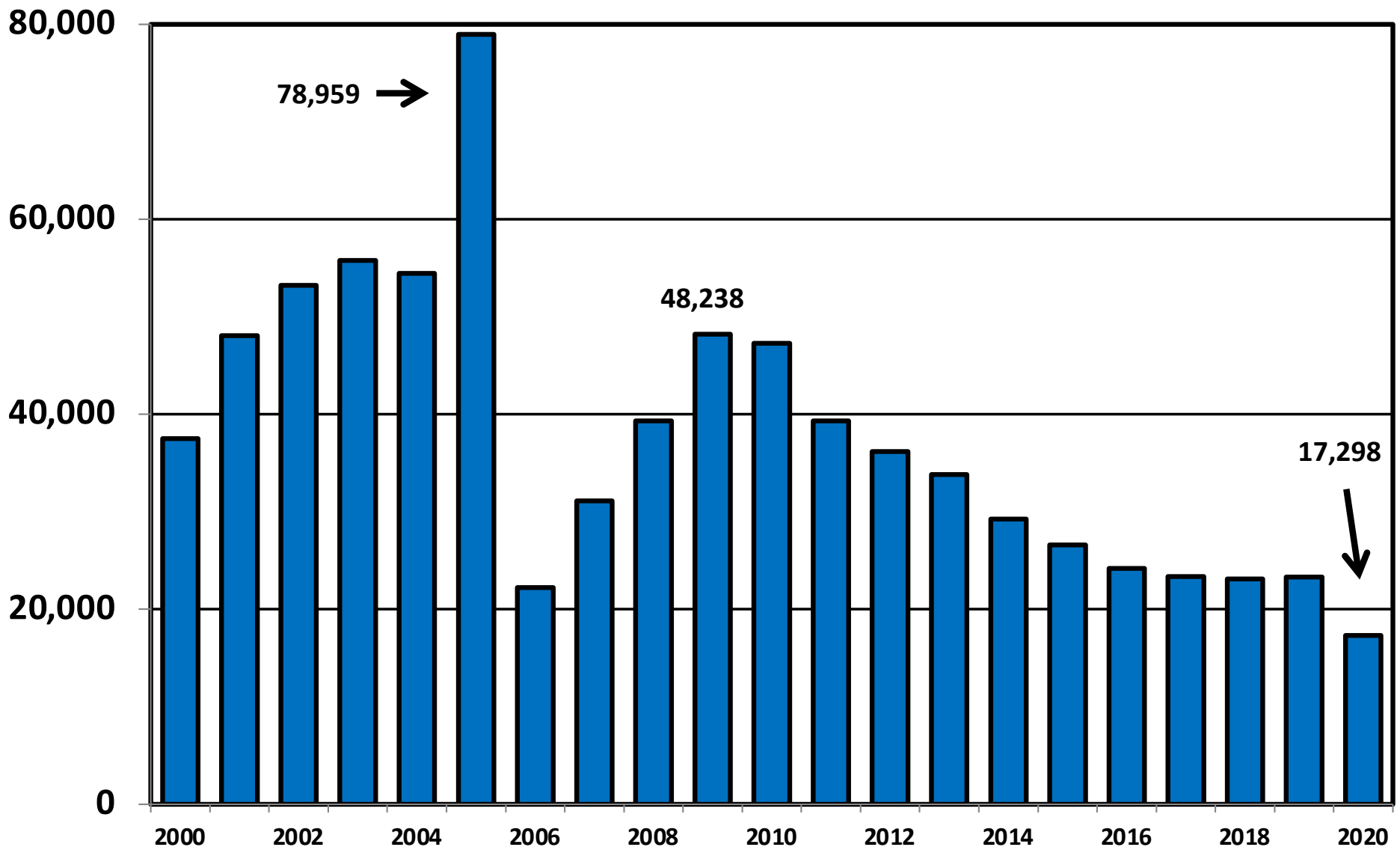
<http://www.abi.org>

**Bankruptcy Filings in Indiana
Calendar Years 2000 - 2020**

Year	Total	Chapter 7	Chapter 11	Chapter 13	Other Cases
2000	37,524	29,878	92	7,548	6
2001	48,066	38,699	173	9,189	5
2002	53,520	43,015	196	10,307	2
2003	55,795	44,697	170	10,914	14
2004	54,465	42,742	132	11,590	1
2005	78,959	66,042	124	12,781	12
2006	22,234	14,380	100	7,747	7
2007	31,122	21,429	98	9,581	14
2008	39,305	27,833	137	11,328	7
2009	48,238	35,543	164	12,526	5
2010	47,304	35,036	187	12,072	9
2011	39,336	29,192	118	10,019	7
2012	36,181	26,230	115	9,826	10
2013	33,846	24,402	117	9,321	6
2014	29,235	20,966	98	8,164	7
2015	26,600	18,707	67	7,813	13
2016	24,207	16,525	69	7,605	8
2017	23,339	15,571	67	7,690	11
2018	23,141	15,091	79	7,956	15
2019	23,332	14,970	56	8,298	8
2020	17,298	12,394	35	4,858	11

Total Bankruptcy Cases Filed in Indiana

Calendar Years 2000 - 2020



Total Filings Relative to Population 2000 - 2020



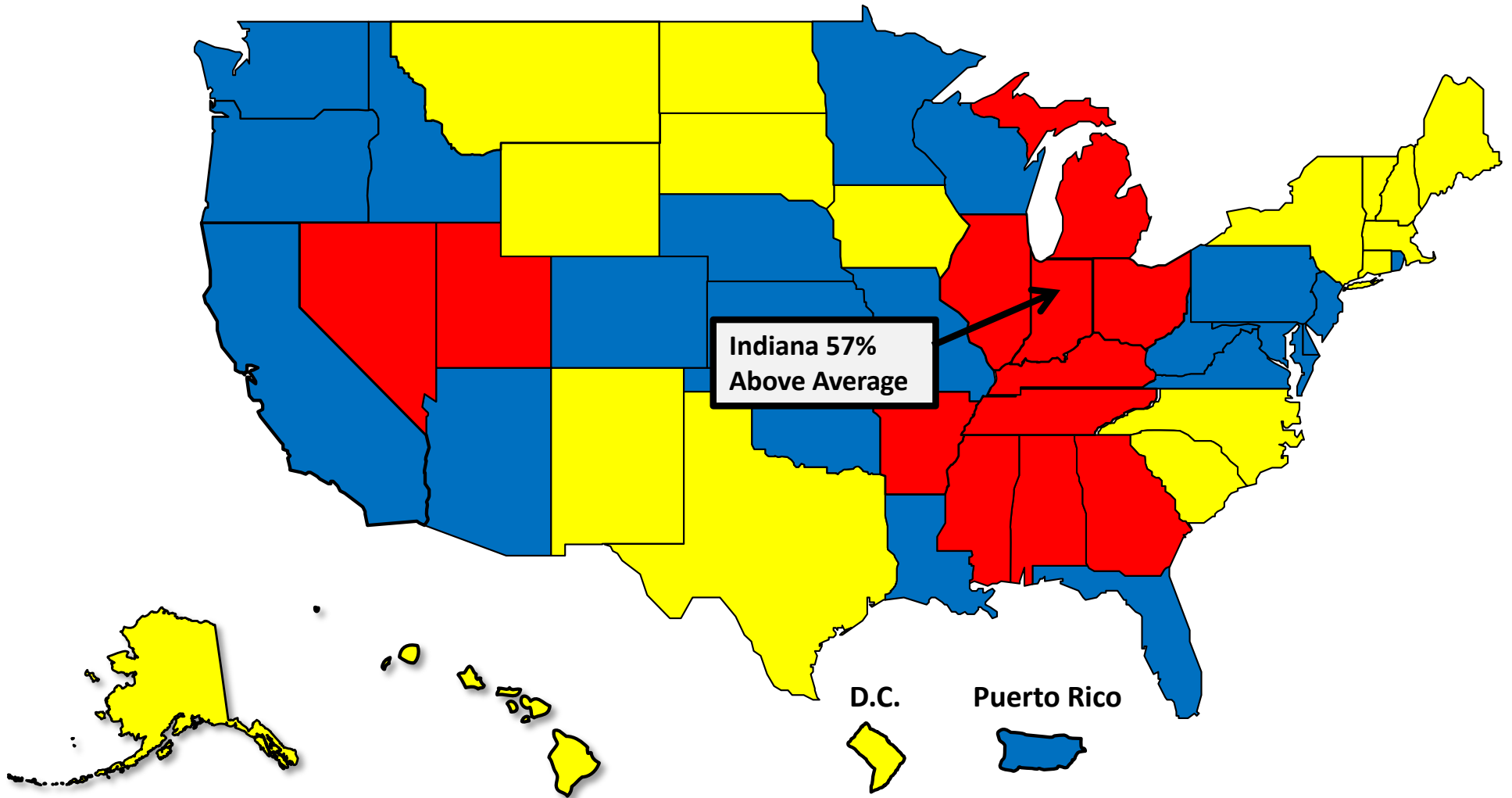
More than 25%
Above Average



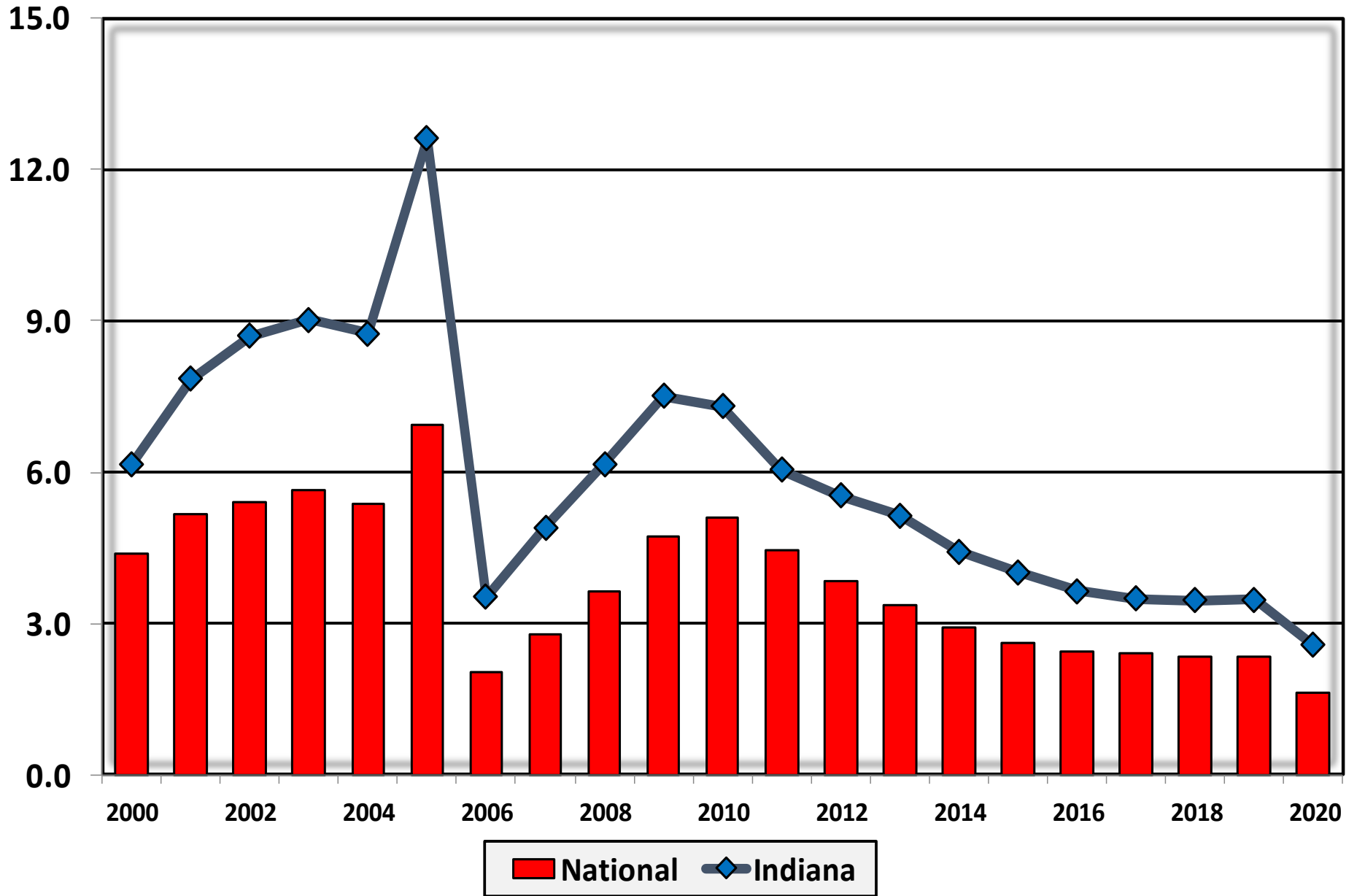
Within 25%
of Average



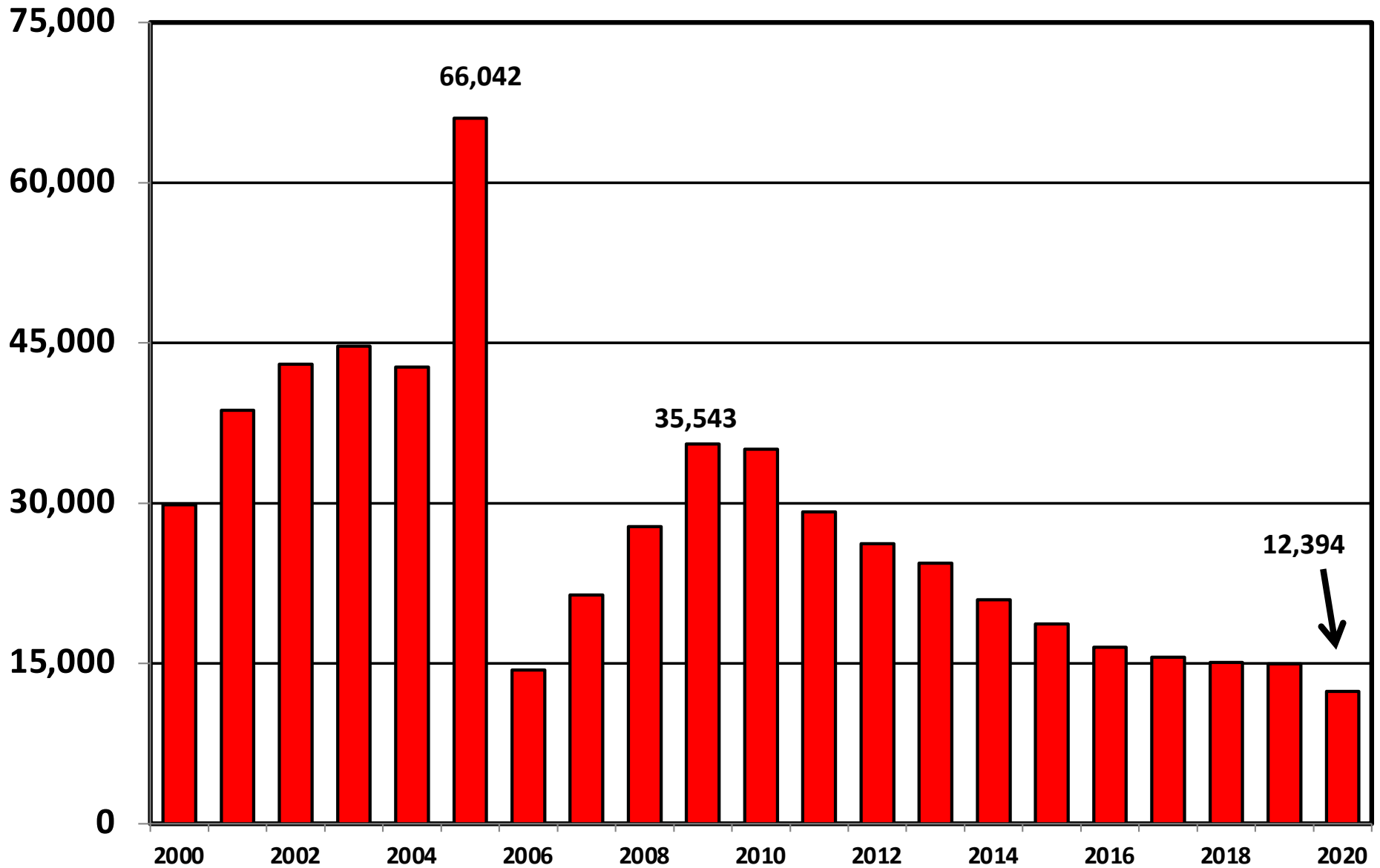
More than 25%
Below Average



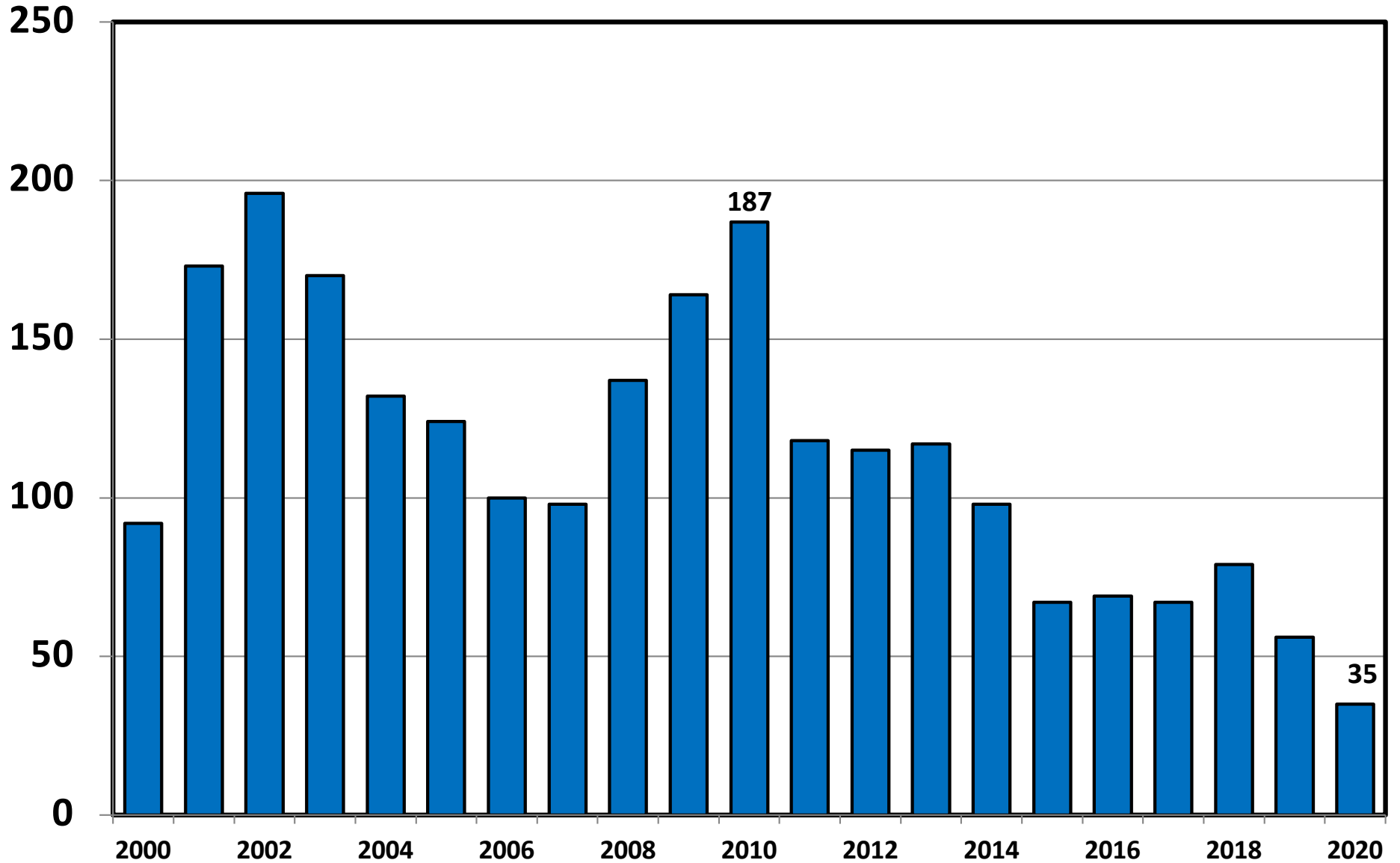
**Bankruptcy Filings per 1,000 Population
Indiana vs. National Average 2000 - 2020**



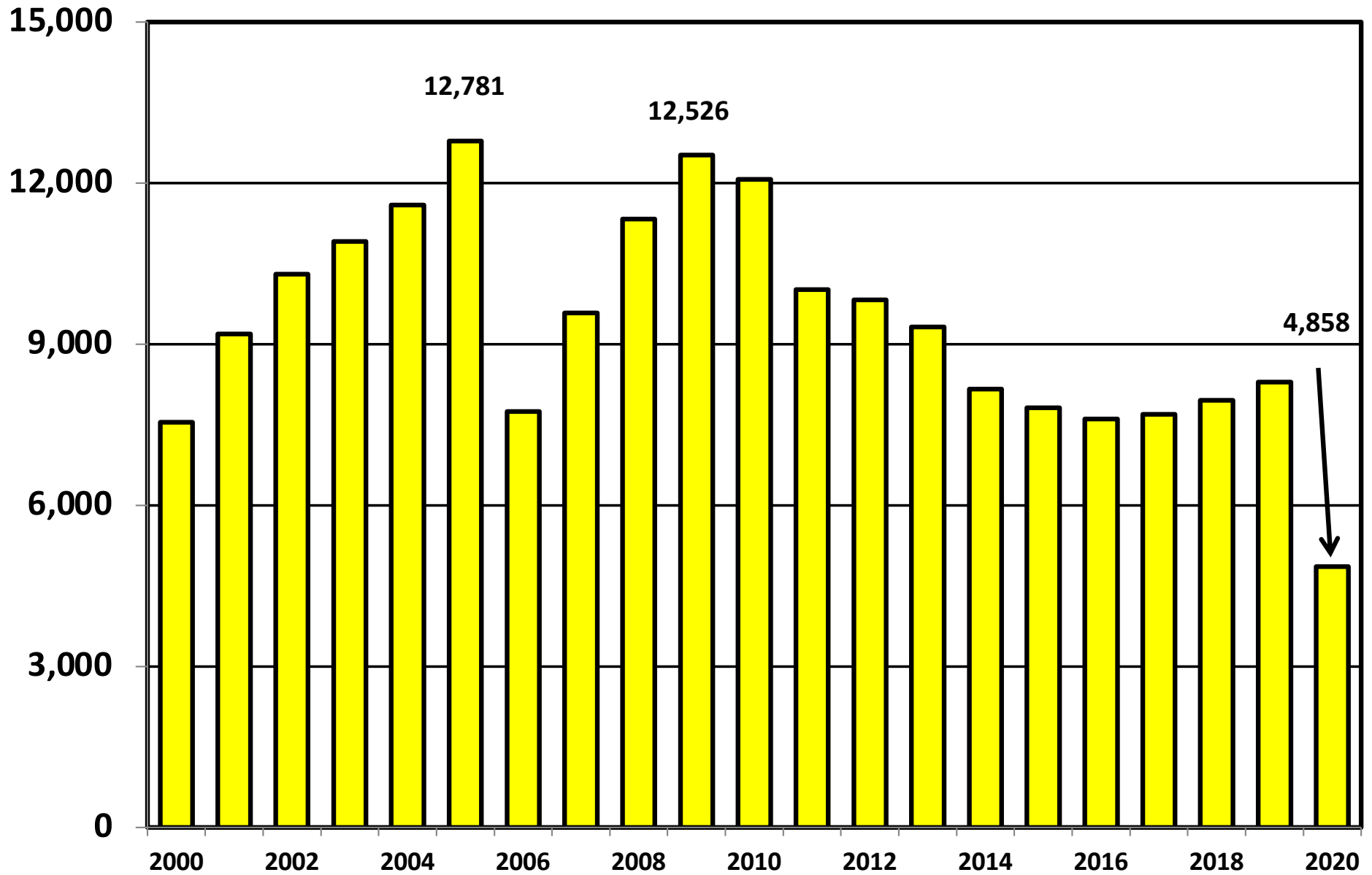
Chapter 7 Cases Filed In Indiana Calendar Years 2000 - 2020



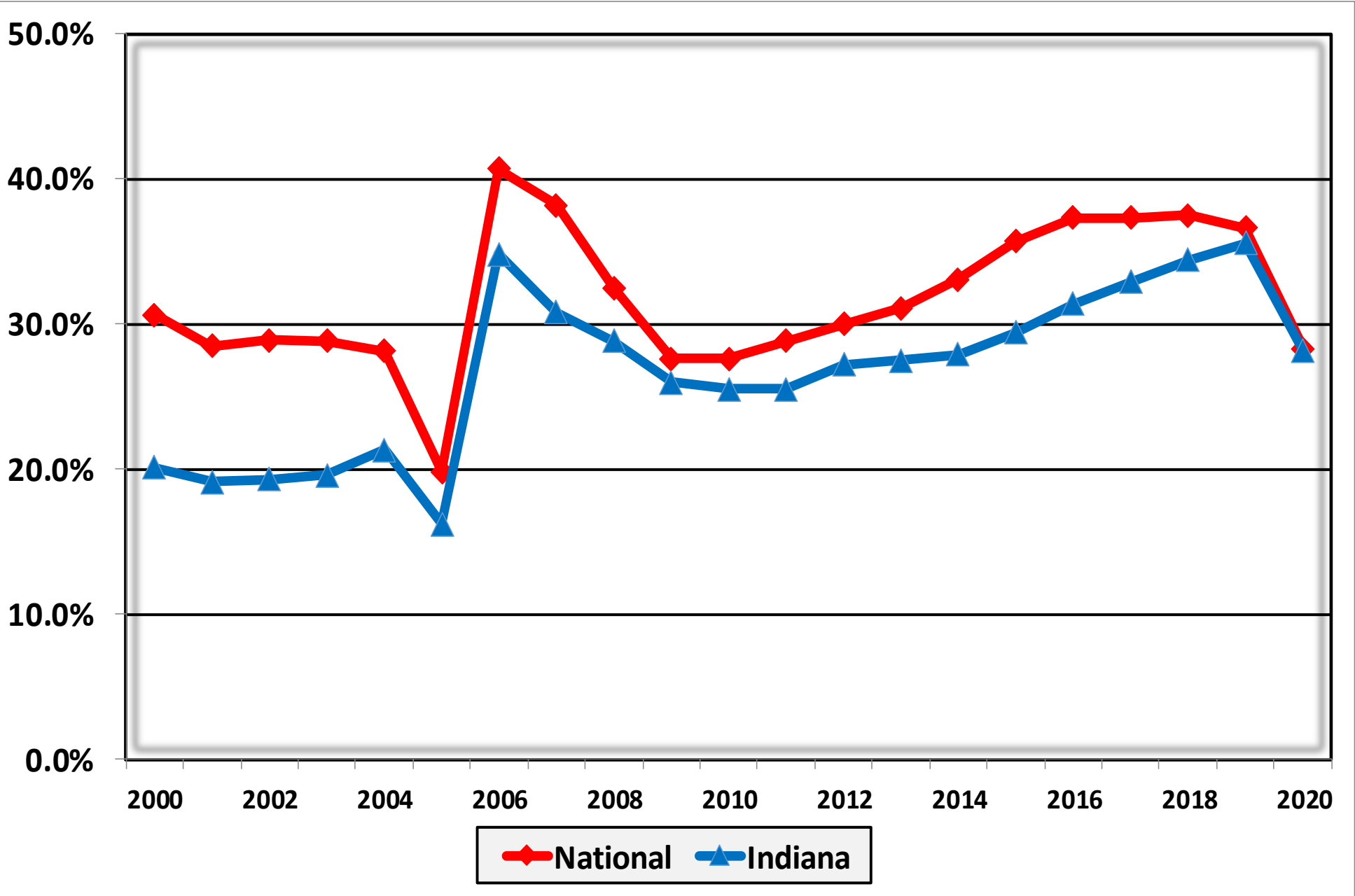
Chapter 11 Cases Filed in Indiana 2000 - 2020



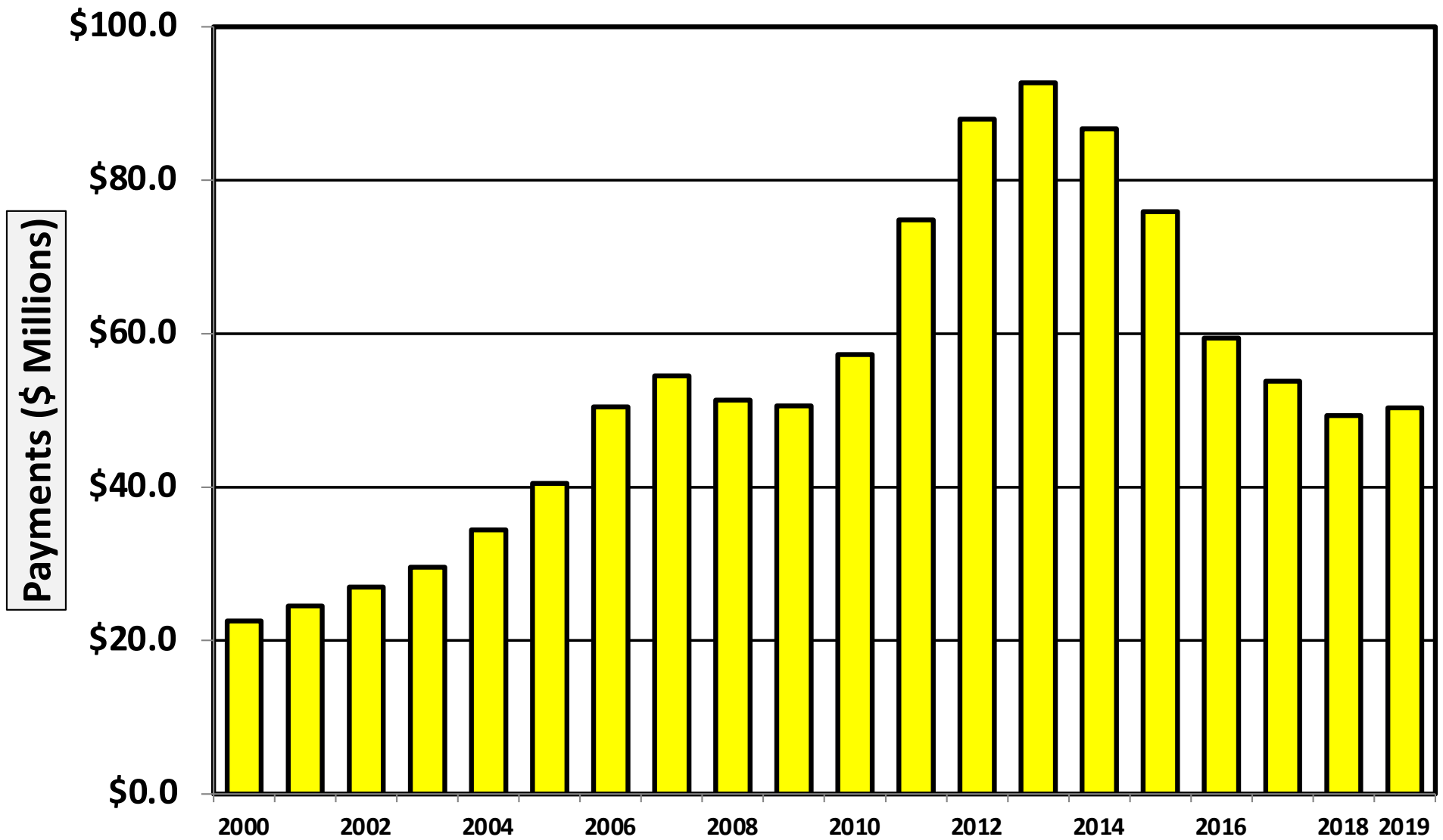
Chapter 13 Cases Filed in Indiana 2000 - 2020



**Percent of Cases Filed as Chapter 13
Calendar Years 2000 - 2020**

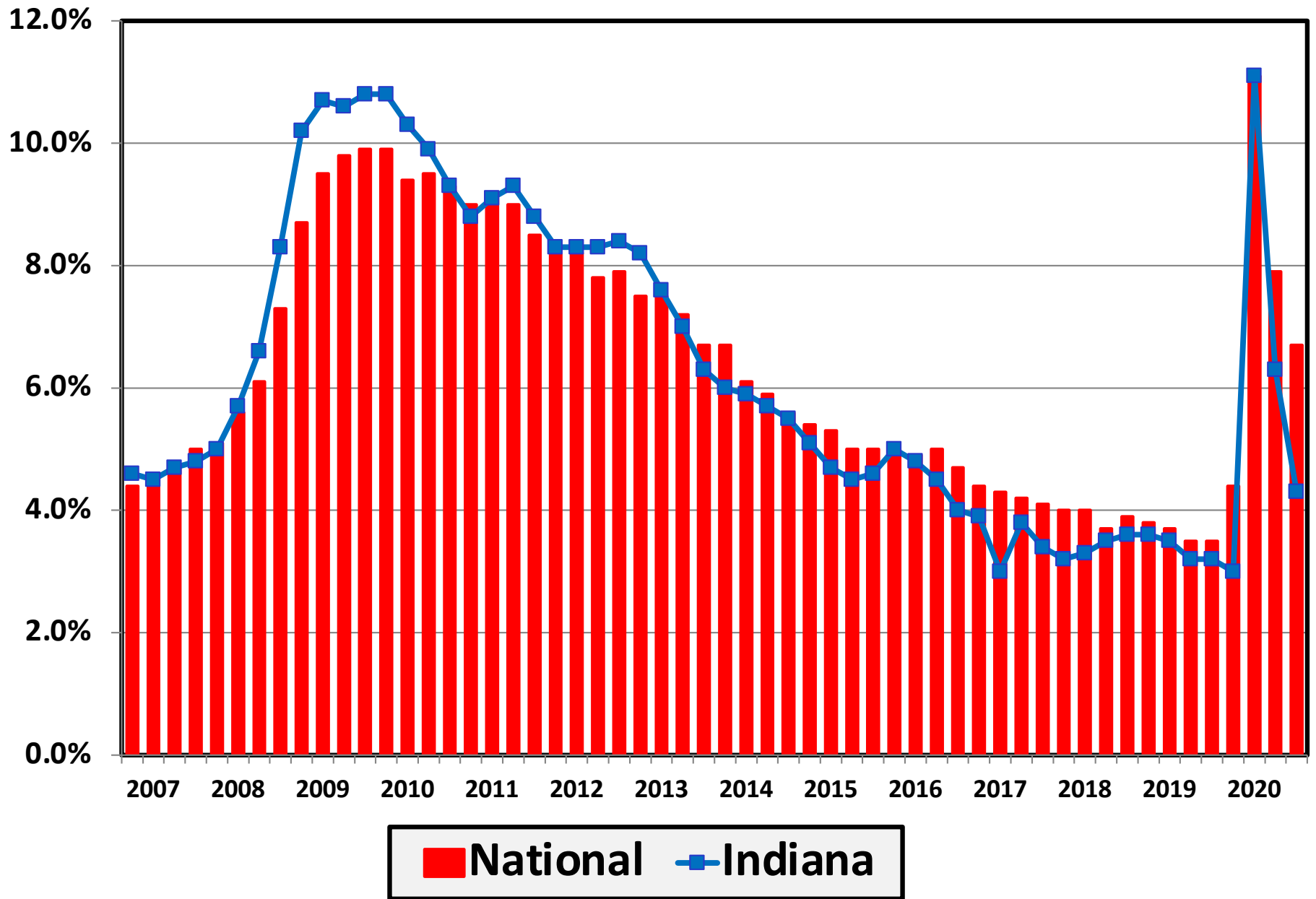


Chapter 13 Cases in Indiana
Amount (in Millions) Paid to Unsecured Creditors
Fiscal Years 2000 - 2019



Source: Executive Office for United States Trustees

Unemployment Rate By Quarter 2006 - 2020

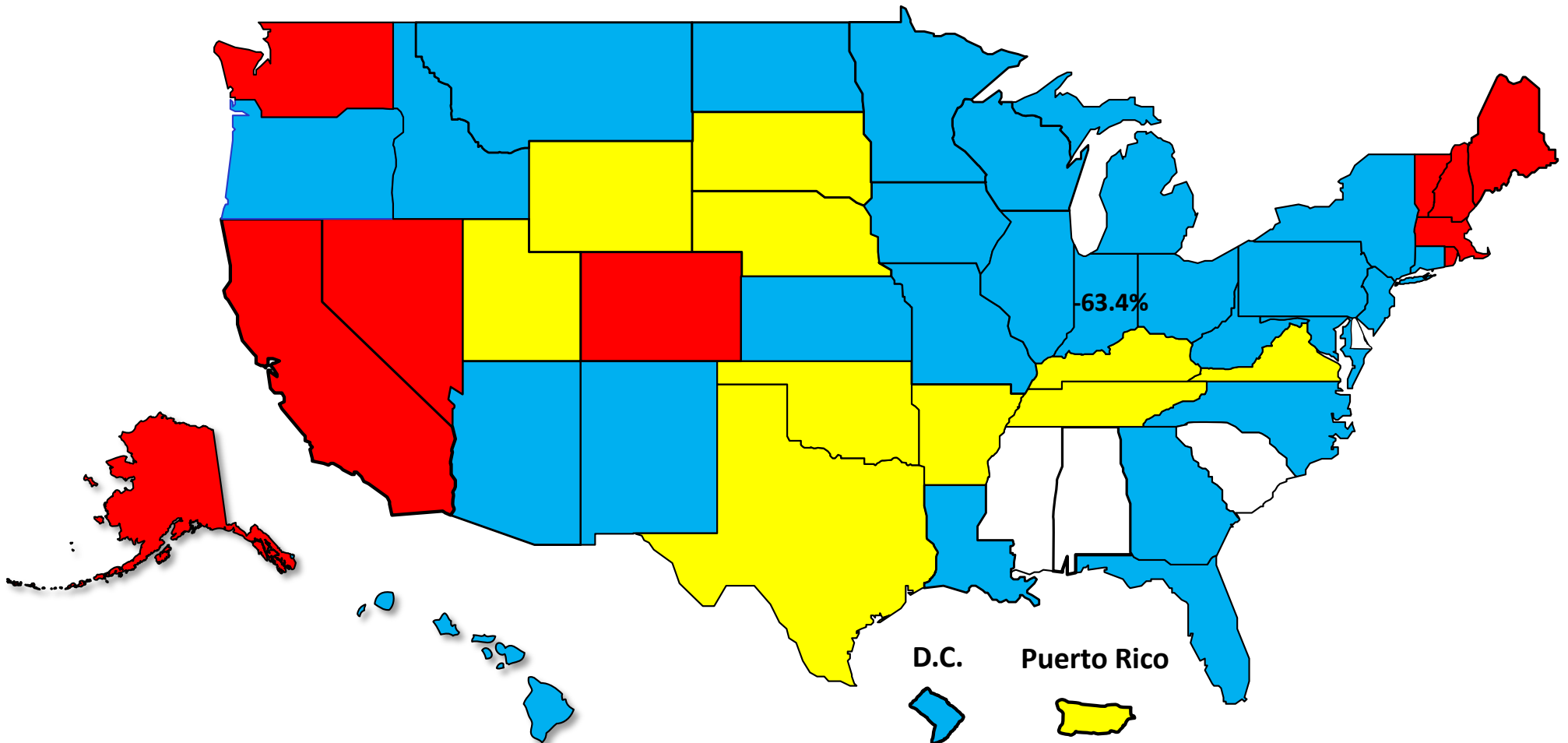


Source: Bureau of Labor Statistics

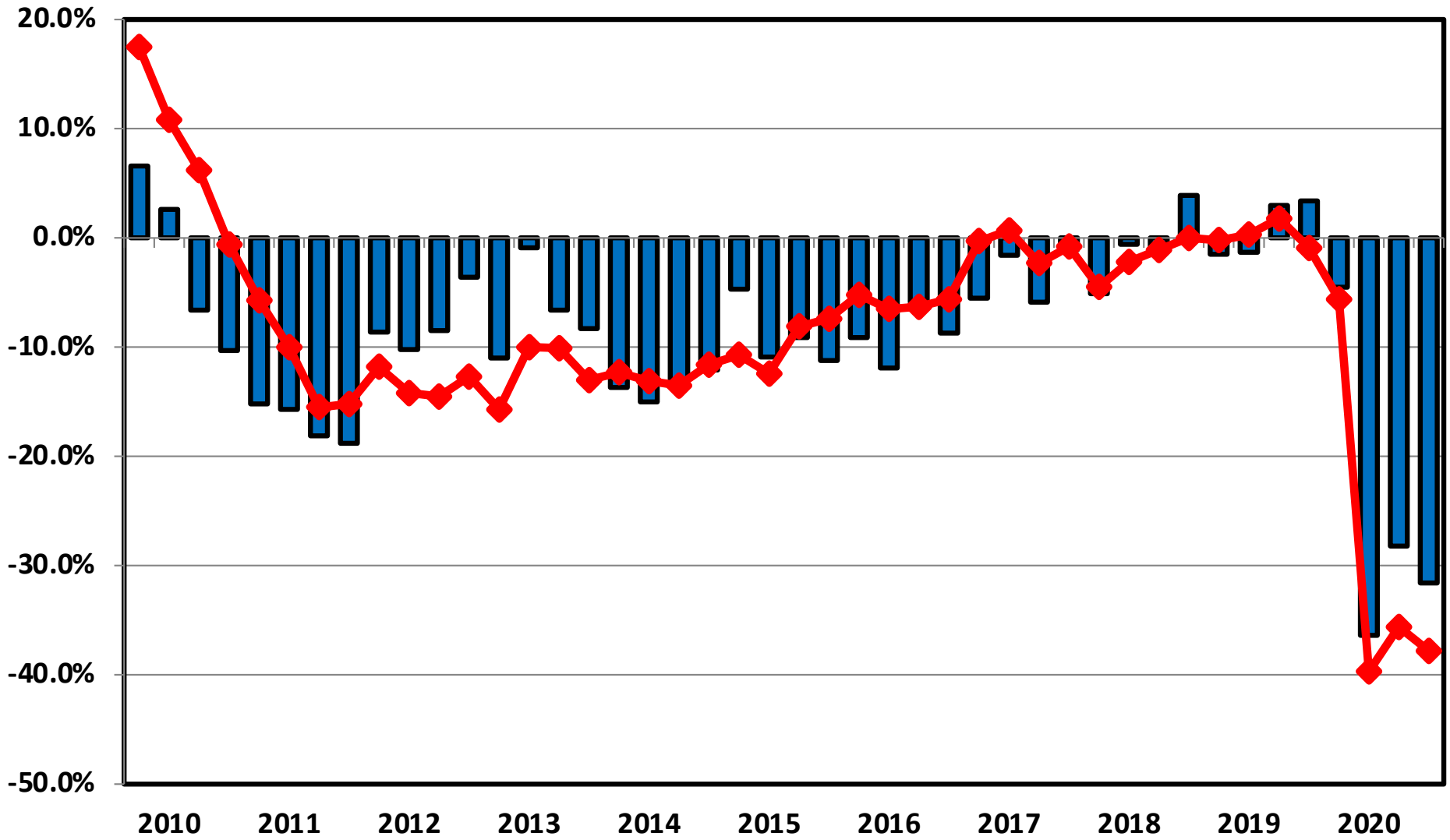
Percent Change in Total Filings Calendar Year 2020 Compared to 2010

(National Average = 65.8% Decrease)

Amount of Decrease



**Filing Trends By Quarter Indiana vs. National Average
(Percent Change From Same Quarter One Year Prior)**



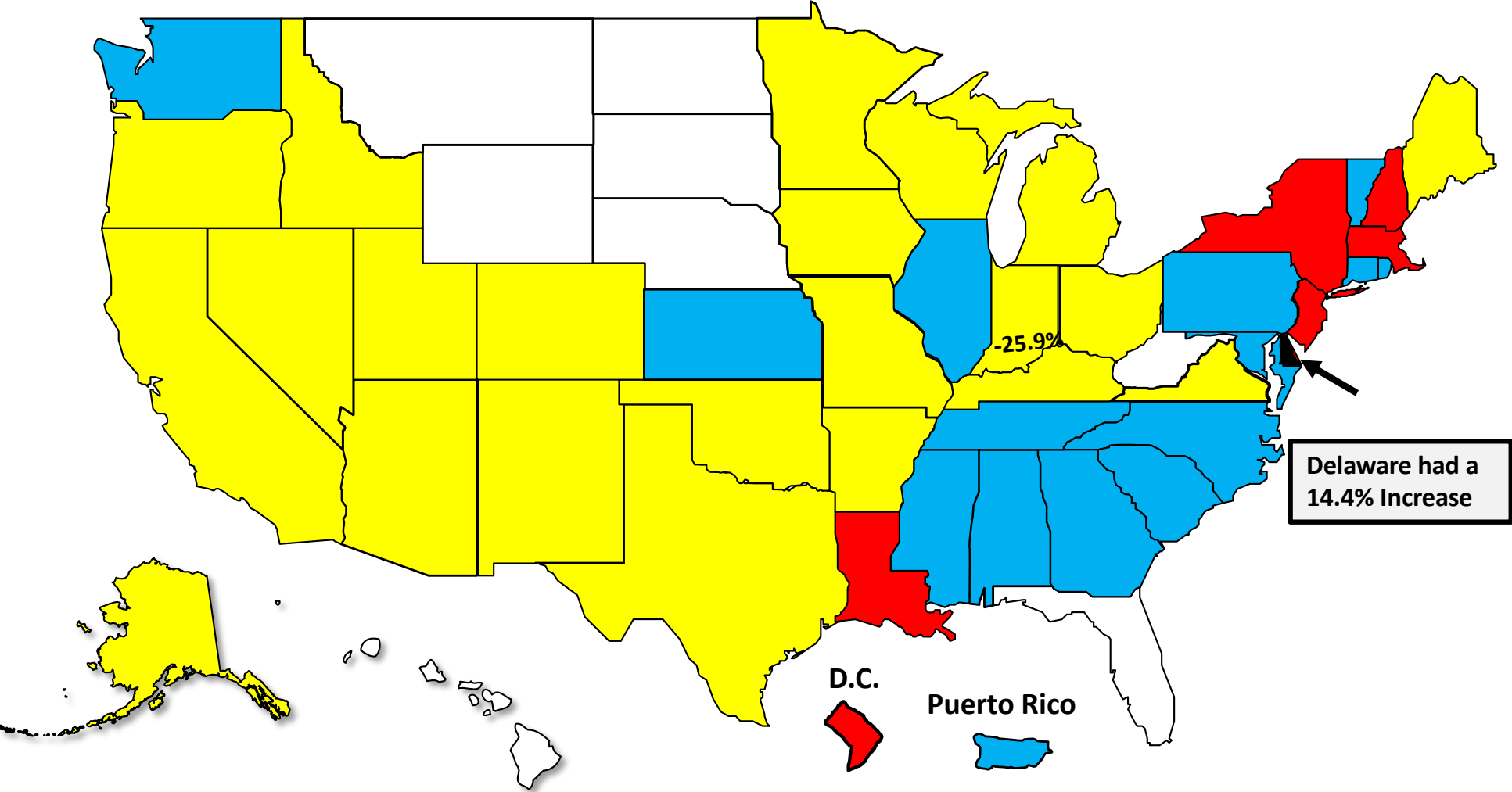
■ Indiana ◆ National

Bankruptcy Filing Trends

Calendar Year 2020 vs. 2019

National Average = 29.7 % Decrease

- Decline Under 20%
- Decline 20% – 30%
- Decline 30% - 40%
- Decline Over 40%





AMERICAN
BANKRUPTCY
INSTITUTE

www.abi.org