

Bankruptcy Filing Trends in Iowa



Prepared by: **The American Bankruptcy Institute**

<http://www.abi.org/>



AMERICAN
BANKRUPTCY
INSTITUTE

Updated
February 2021

Iowa



State at a Glance		
	Iowa	National
Population (7/1/2019)	3,155,070	328,239,523
- Change since 2010	3.6%	6.3%
- Foreign Born	5.2%	13.6%
Size (Square Miles)	55,857	3,531,905
Median Household Income	\$60,523	\$62,843
Persons per Household	2.40	2.62
Per Capita Income	\$32,176	\$34,103
Median Home Value	\$147,800	\$217,500
Homeownership Rate	71.1%	64.0%
High School Graduate (or Higher)	92.1%	88.0%
College Graduate (or Higher)	28.6	32.1%
Disabled	7.9%	8.6%
No Health Insurance	6.0%	9.5%
In Poverty	11.2%	10.5%
Source: U.S. Census Bureau January 2021		

Prepared by: The American Bankruptcy Institute

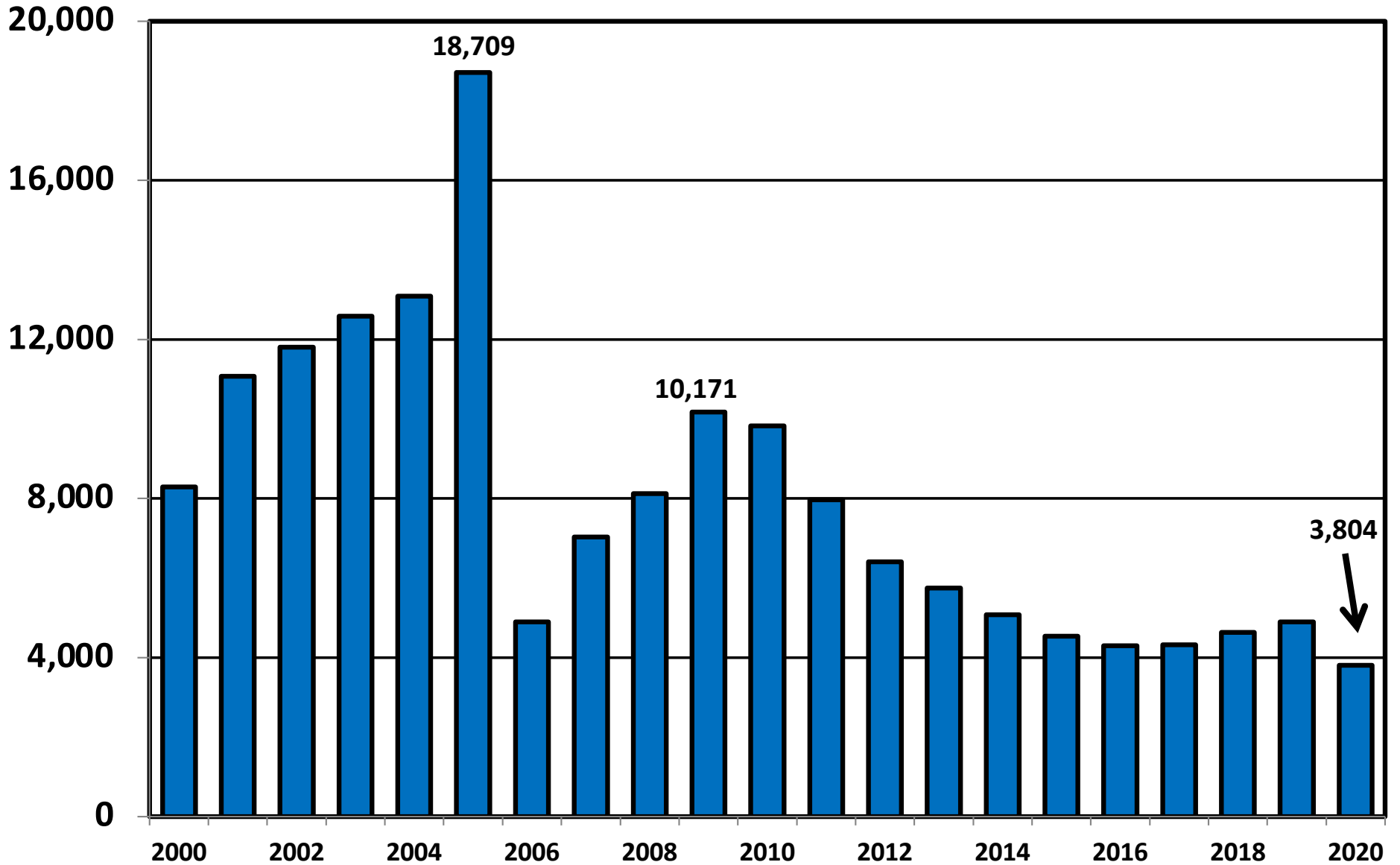
<http://www.abi.org>

Bankruptcy Filings in Iowa

Calendar Years 2000 - 2020

Year	Total	Chapter 7	Chapter 11	Chapter 13	Other Cases
2000	8,293	7,683	19	583	8
2001	11,076	10,459	28	582	7
2002	11,808	11,186	26	587	9
2003	12,582	11,895	28	647	12
2004	13,082	12,430	23	628	1
2005	18,709	17,771	18	914	6
2006	4,891	4,316	11	561	3
2007	7,036	6,275	11	744	6
2008	8,125	7,383	14	726	2
2009	10,171	9,354	21	789	7
2010	9,829	9,013	36	770	10
2011	7,965	7,231	24	700	10
2012	6,411	5,803	19	578	11
2013	5,747	5,240	10	493	4
2014	5,079	4,607	20	448	4
2015	4,535	4,054	8	459	14
2016	4,297	3,797	8	480	12
2017	4,320	3,818	15	469	18
2018	4,629	4,074	19	523	13
2019	4,902	4,274	8	593	27
2020	3,804	3,389	6	375	34

Total Bankruptcy Cases Filed In Iowa Calendar Years 2000 - 2020



Total Filings Relative to Population 2000 - 2020



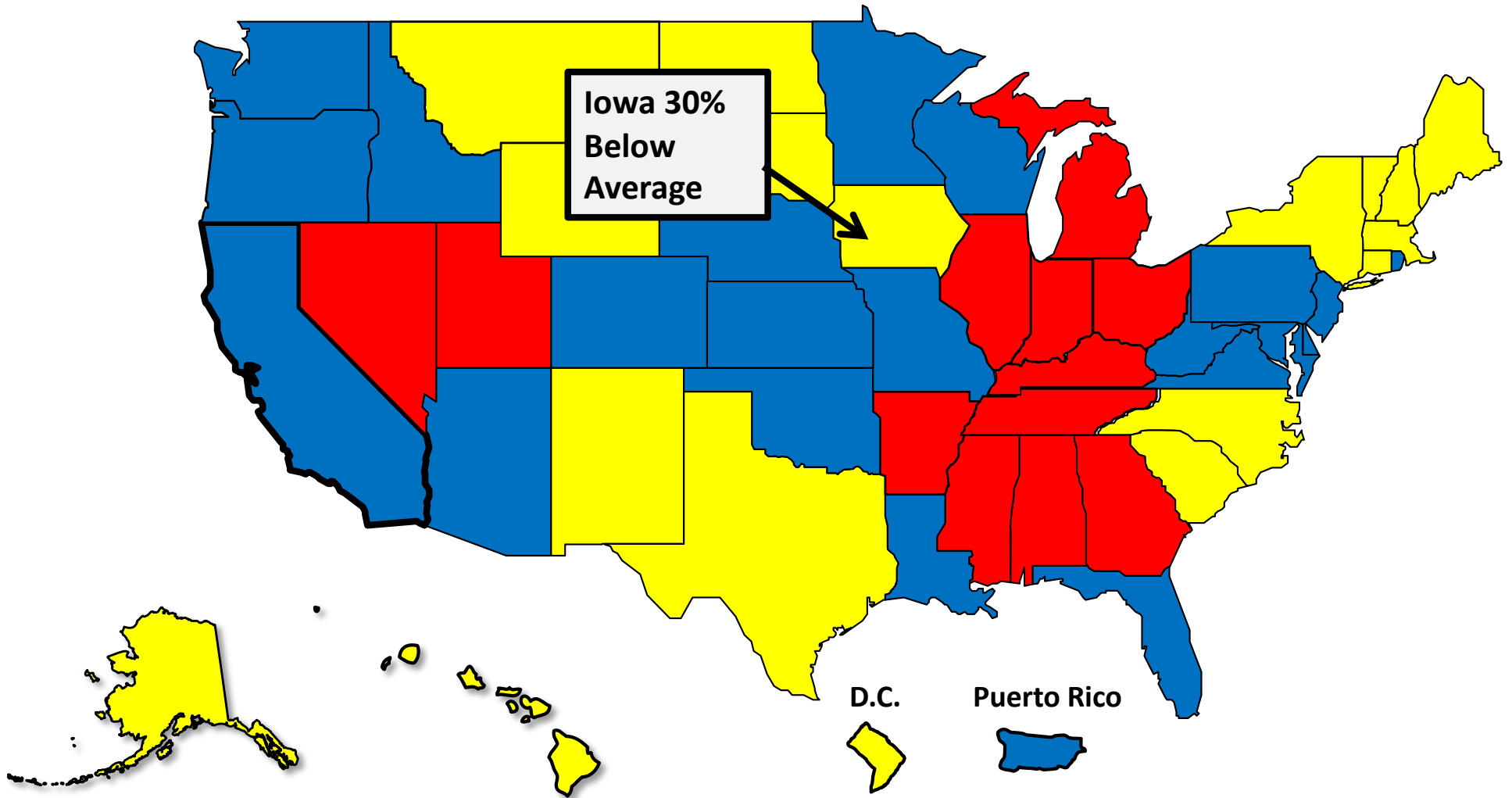
More than 25%
Above Average



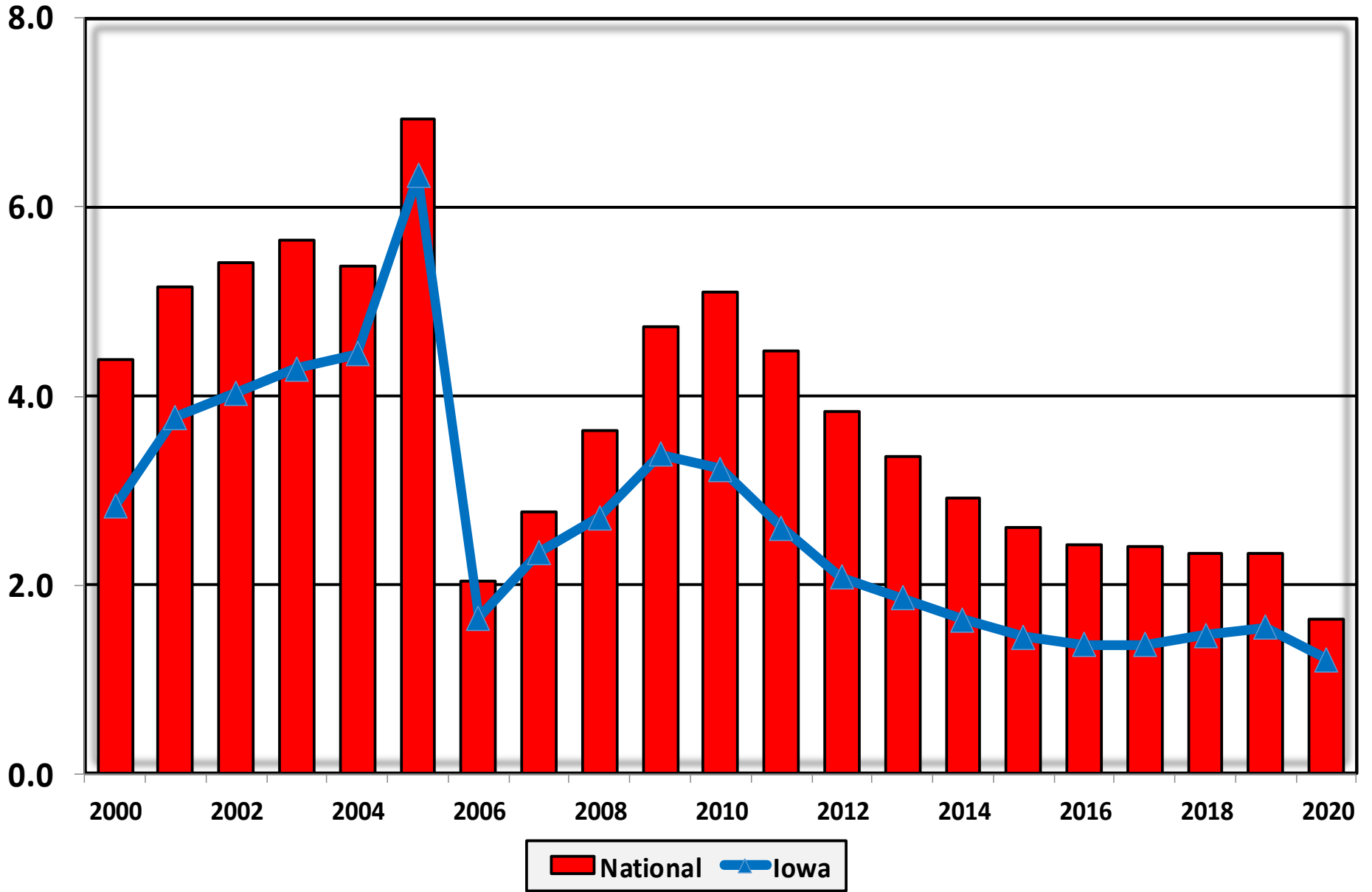
Within 25%
of Average



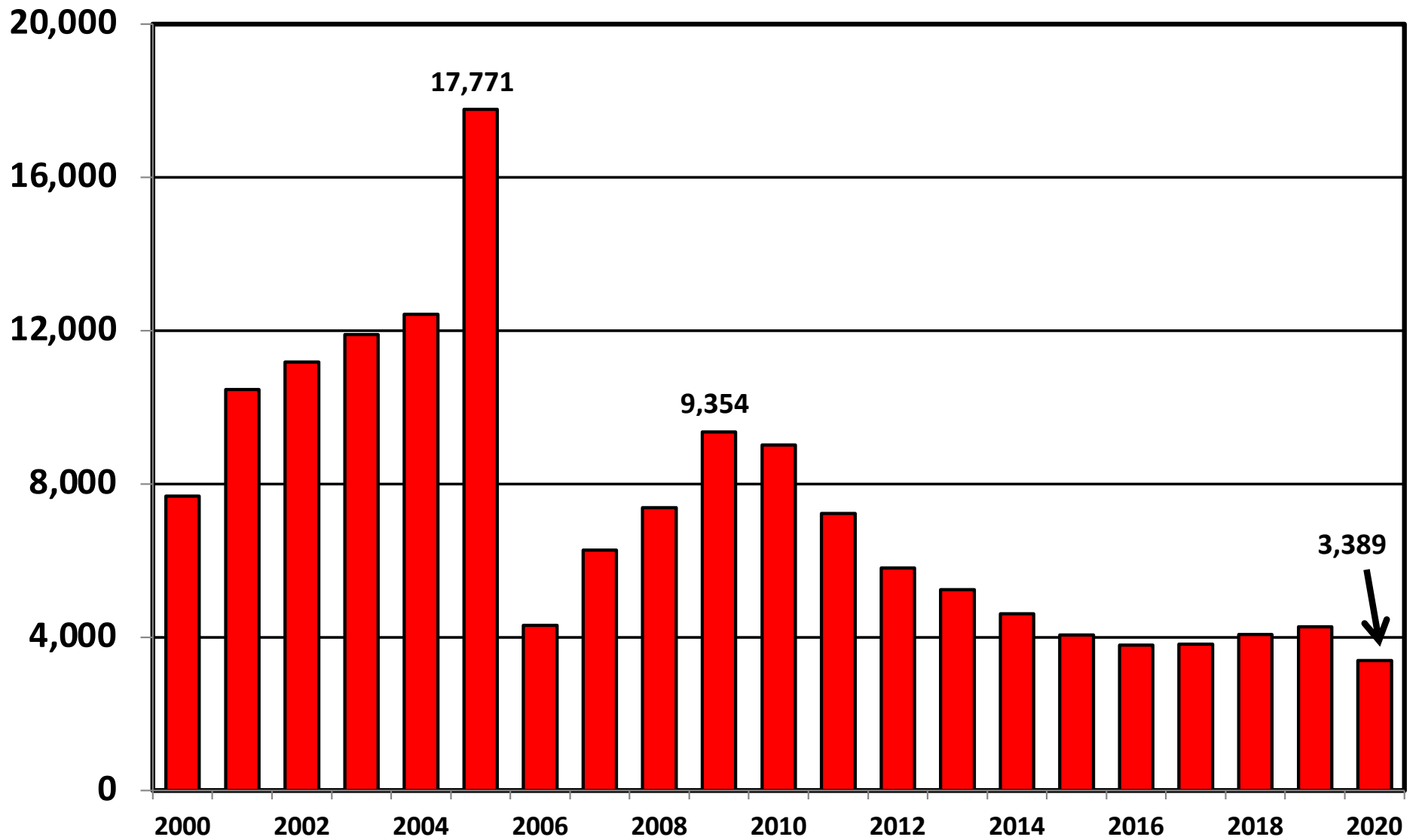
More than 25%
Below Average



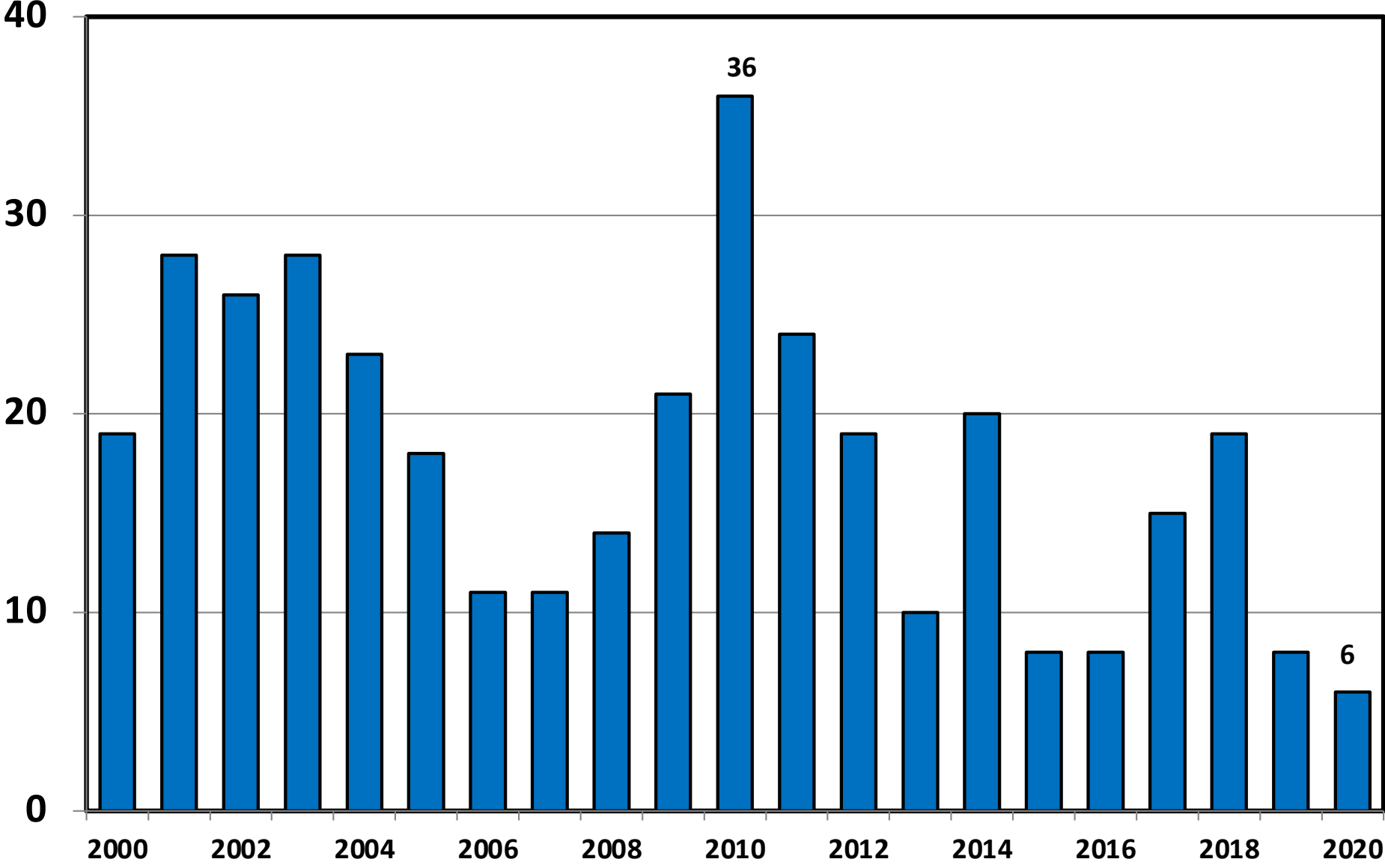
**Bankruptcy Filings per 1,000 Population
Iowa vs. National Average 2000 - 2020**



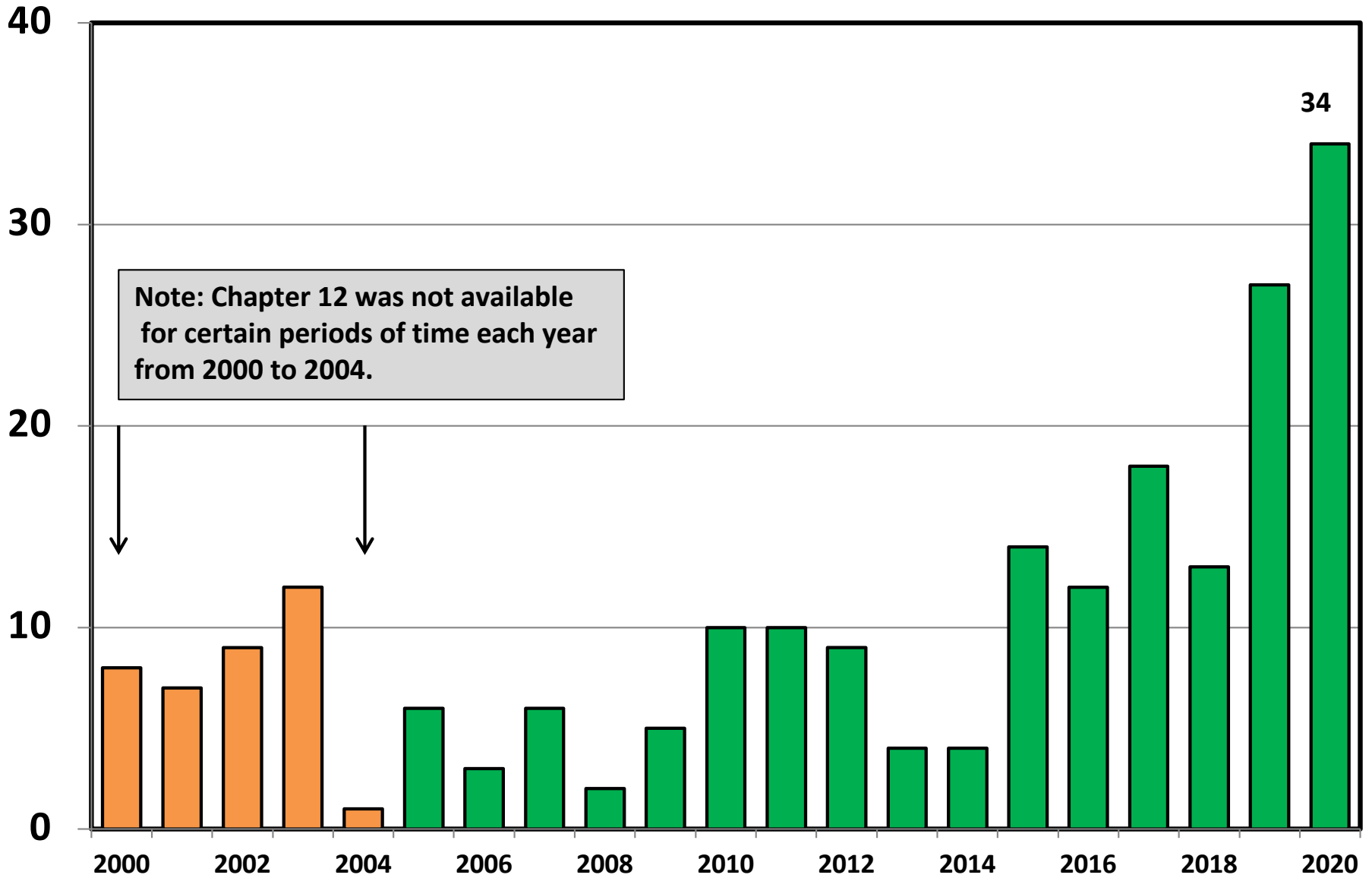
Chapter 7 Cases Filed In Iowa Calendar Years 2000 - 2020



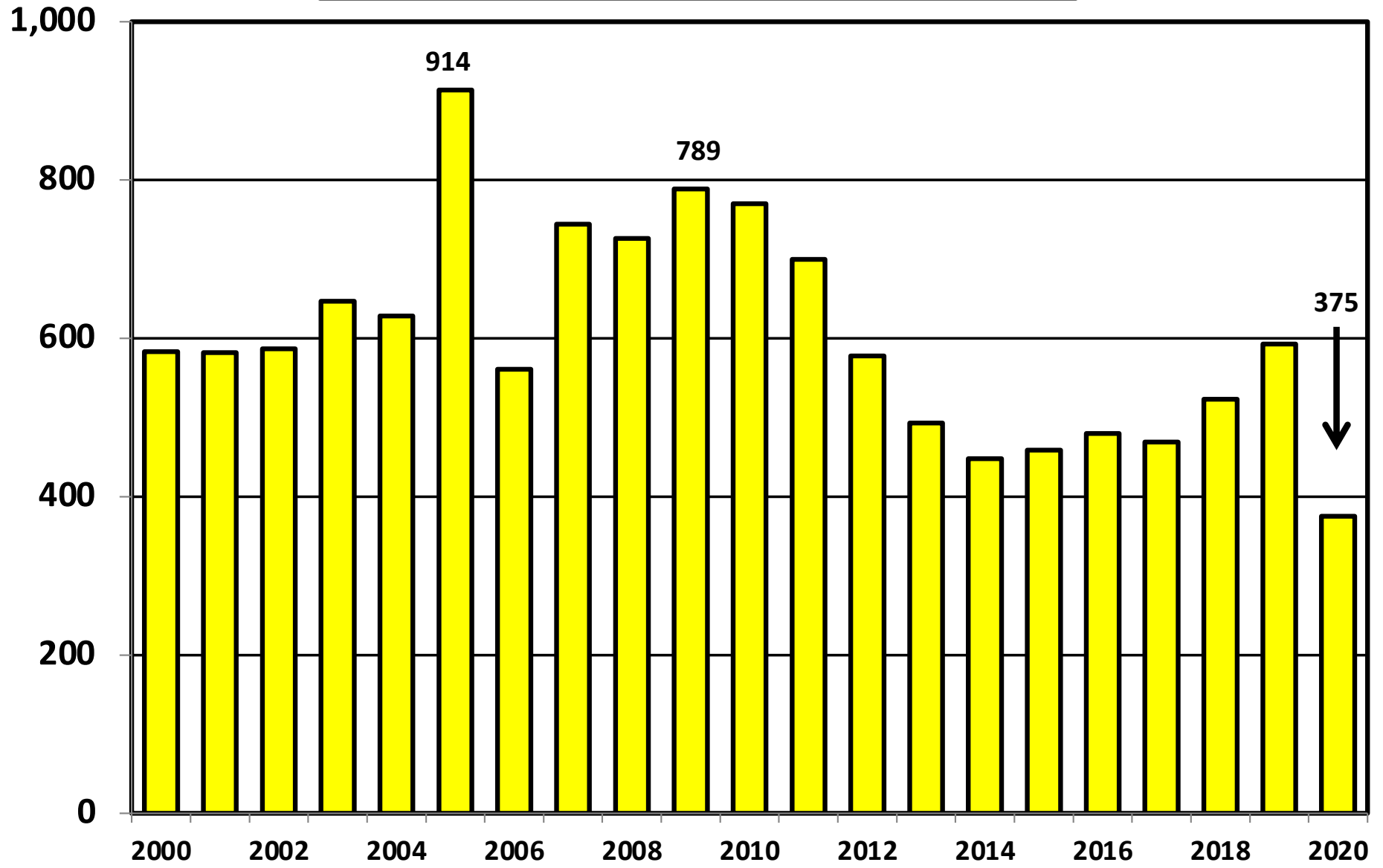
**Chapter 11 Cases Filed in Iowa
2000 - 2020**



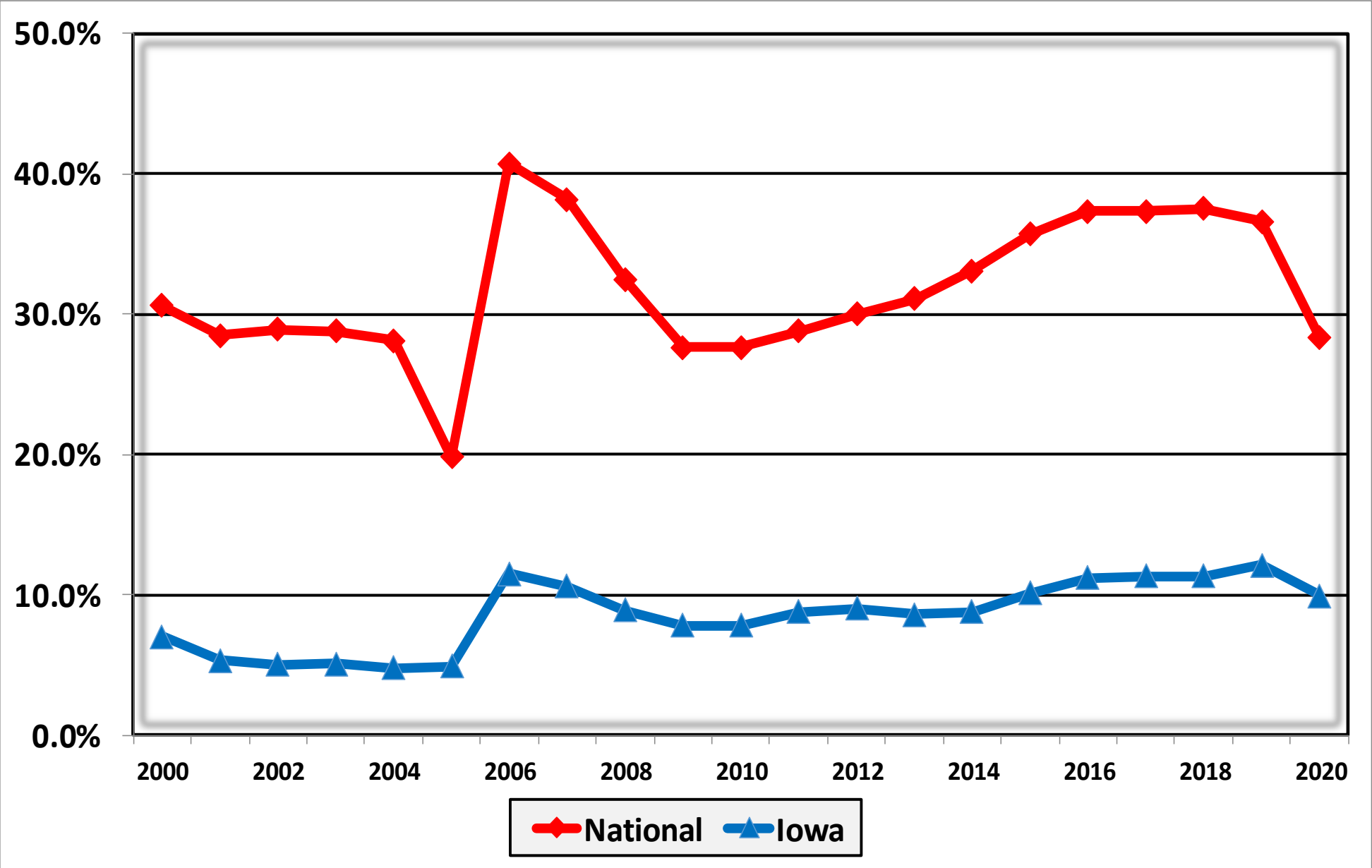
Chapter 12 Cases Filed in Iowa 2000 - 2020



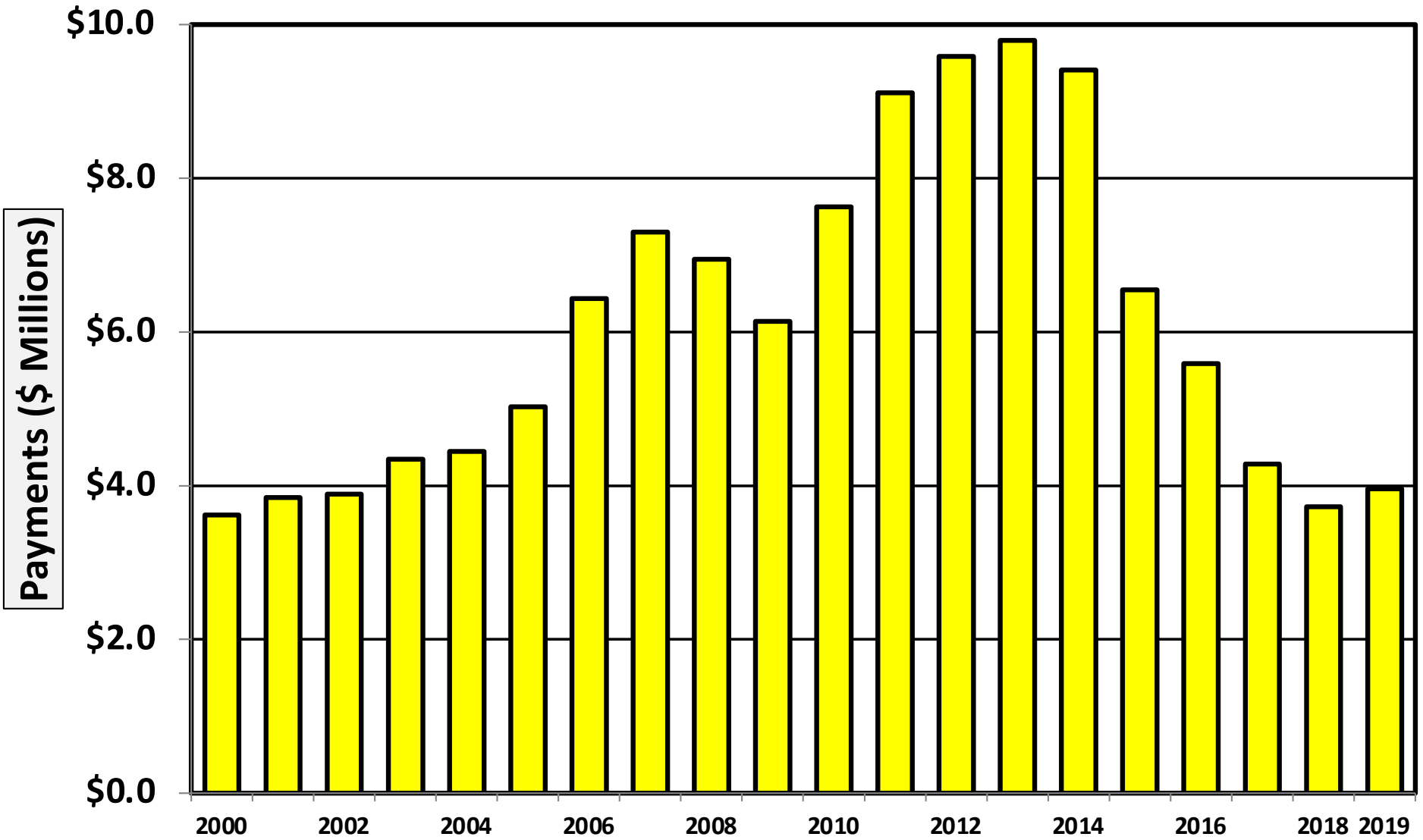
Chapter 13 Cases Filed in Iowa 2000 - 2020



**Percent of Cases Filed as Chapter 13
Calendar Years 2000 - 2020**

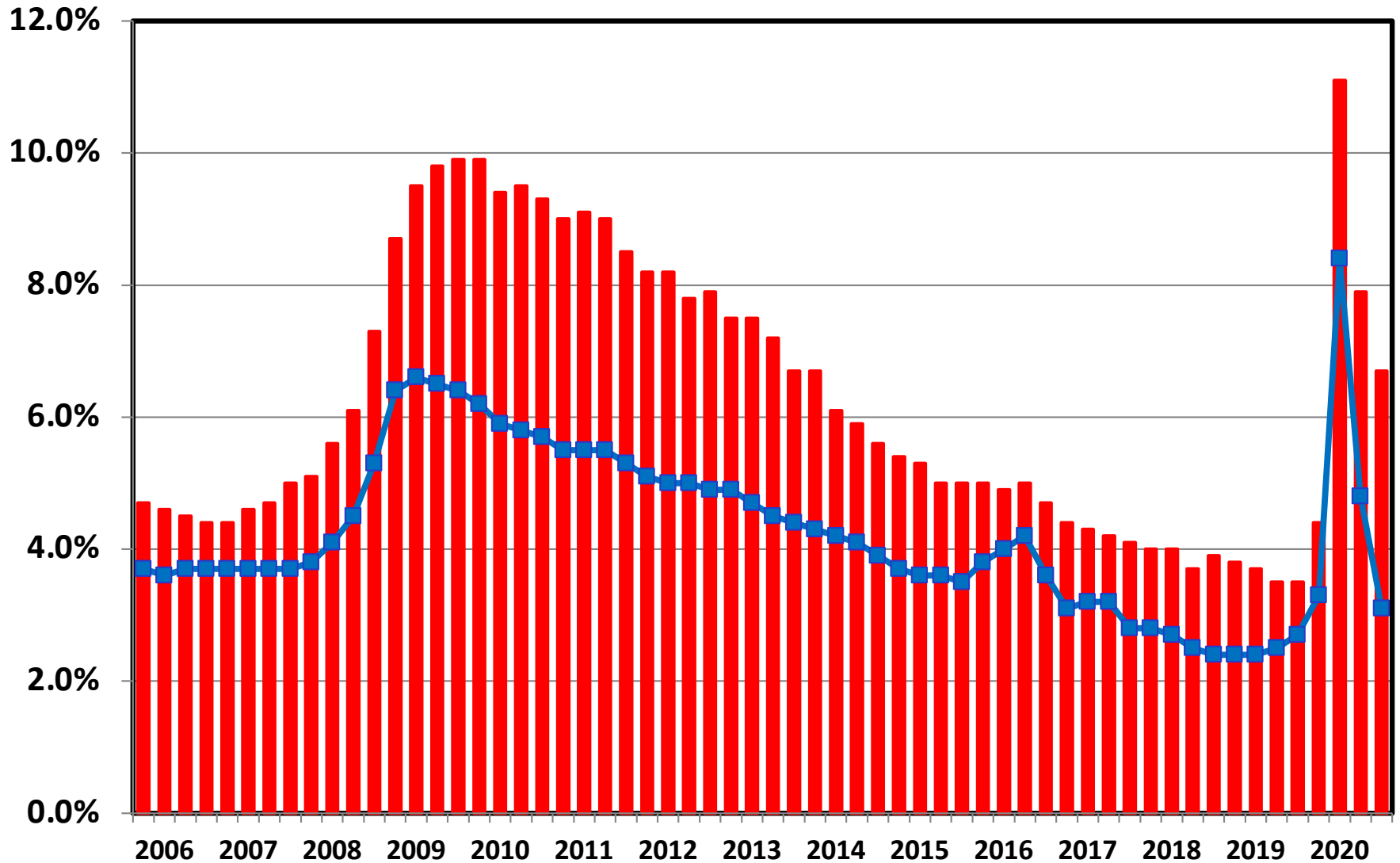


Chapter 13 Cases in Iowa
Amount (in Millions) Paid to Unsecured Creditors
Fiscal Years 2000 - 2019



Source: Executive Office for United States Trustees

Unemployment Rate By Quarter 2006 - 2020



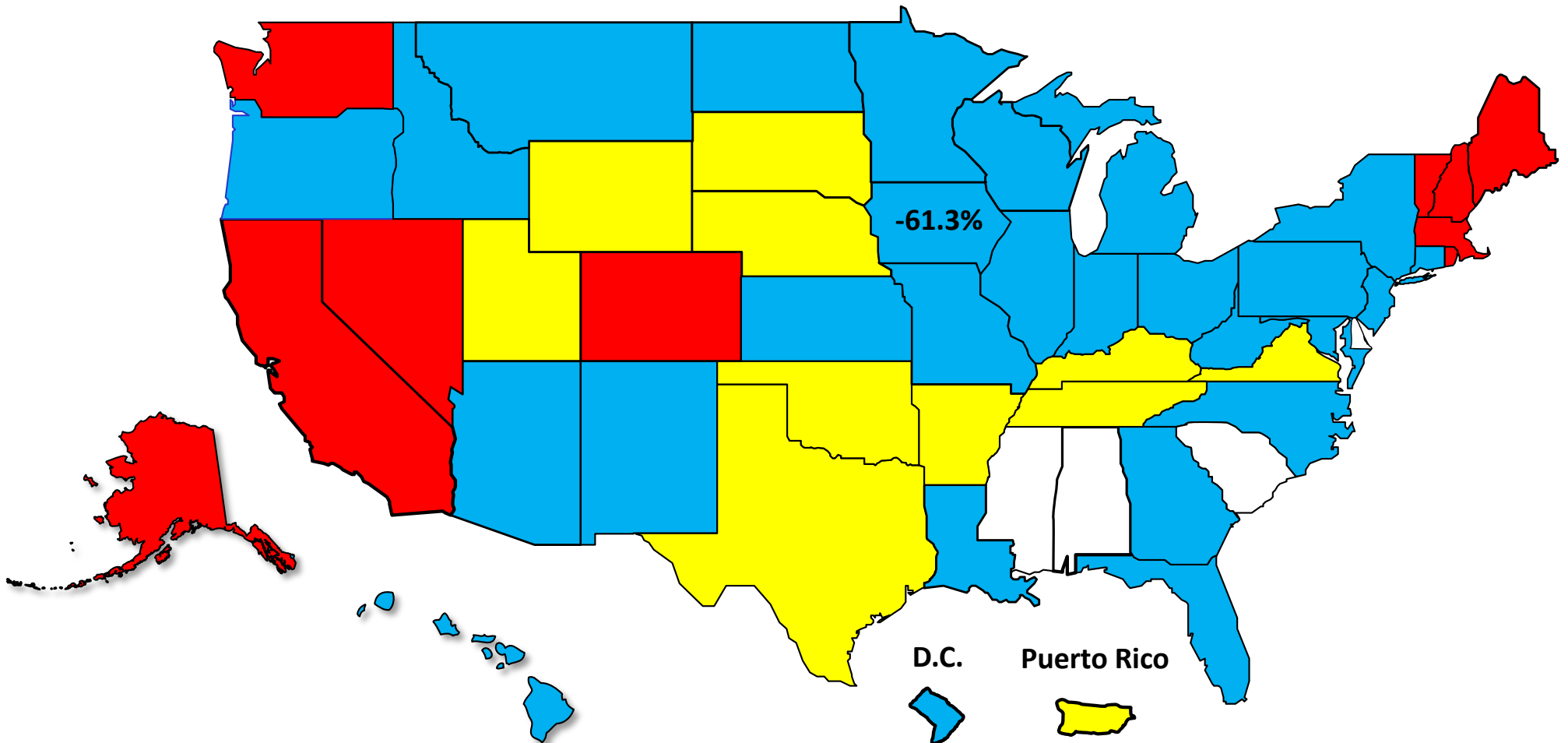
■ National ■ Iowa

Source: Bureau of Labor Statistics

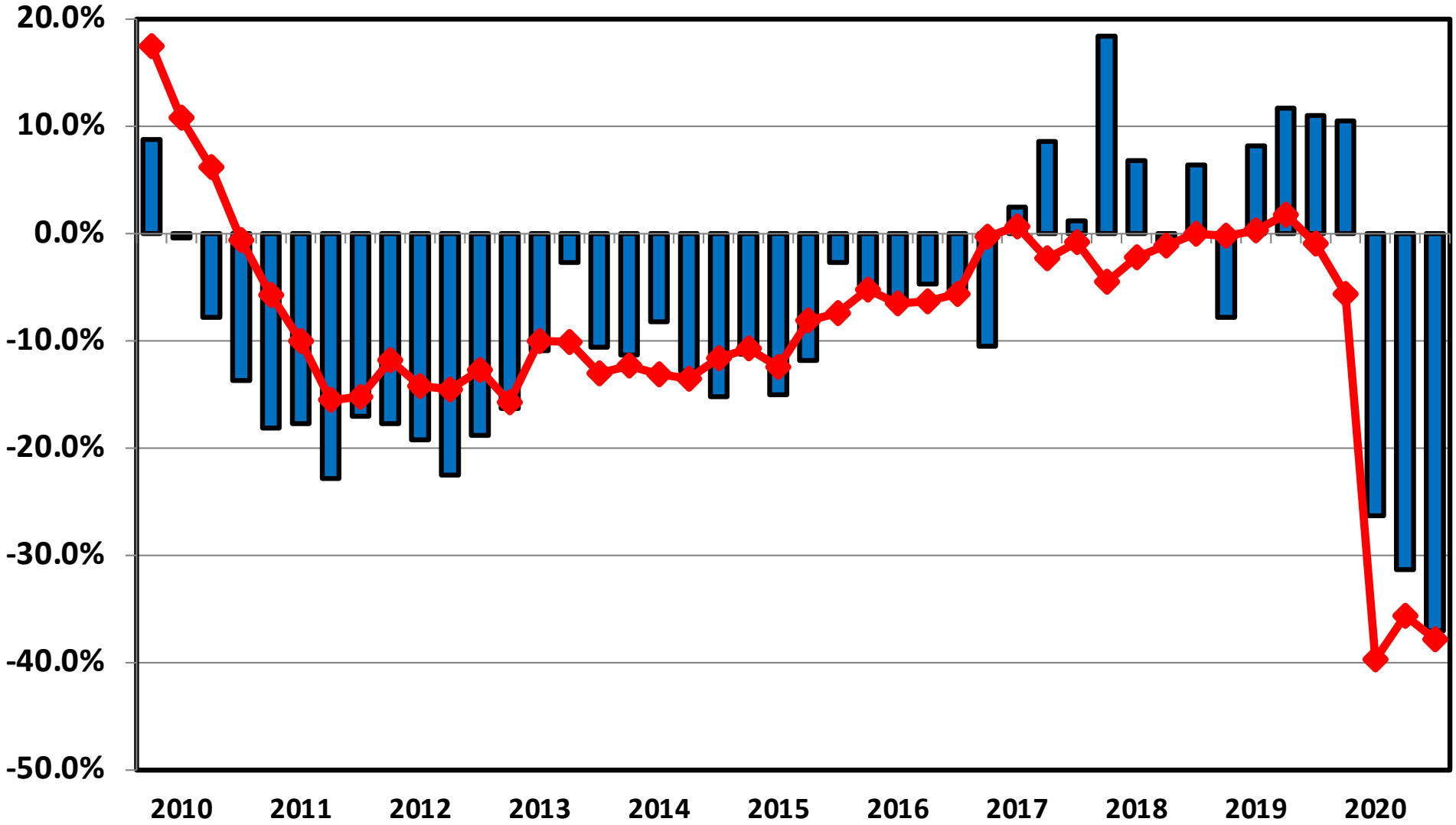
Percent Change in Total Filings Calendar Year 2020 Compared to 2010

(National Average = 65.8% Decrease)

Amount of Decrease



Filing Trends By Quarter Iowa vs. National Average
(Percent Change From Same Quarter One Year Prior)



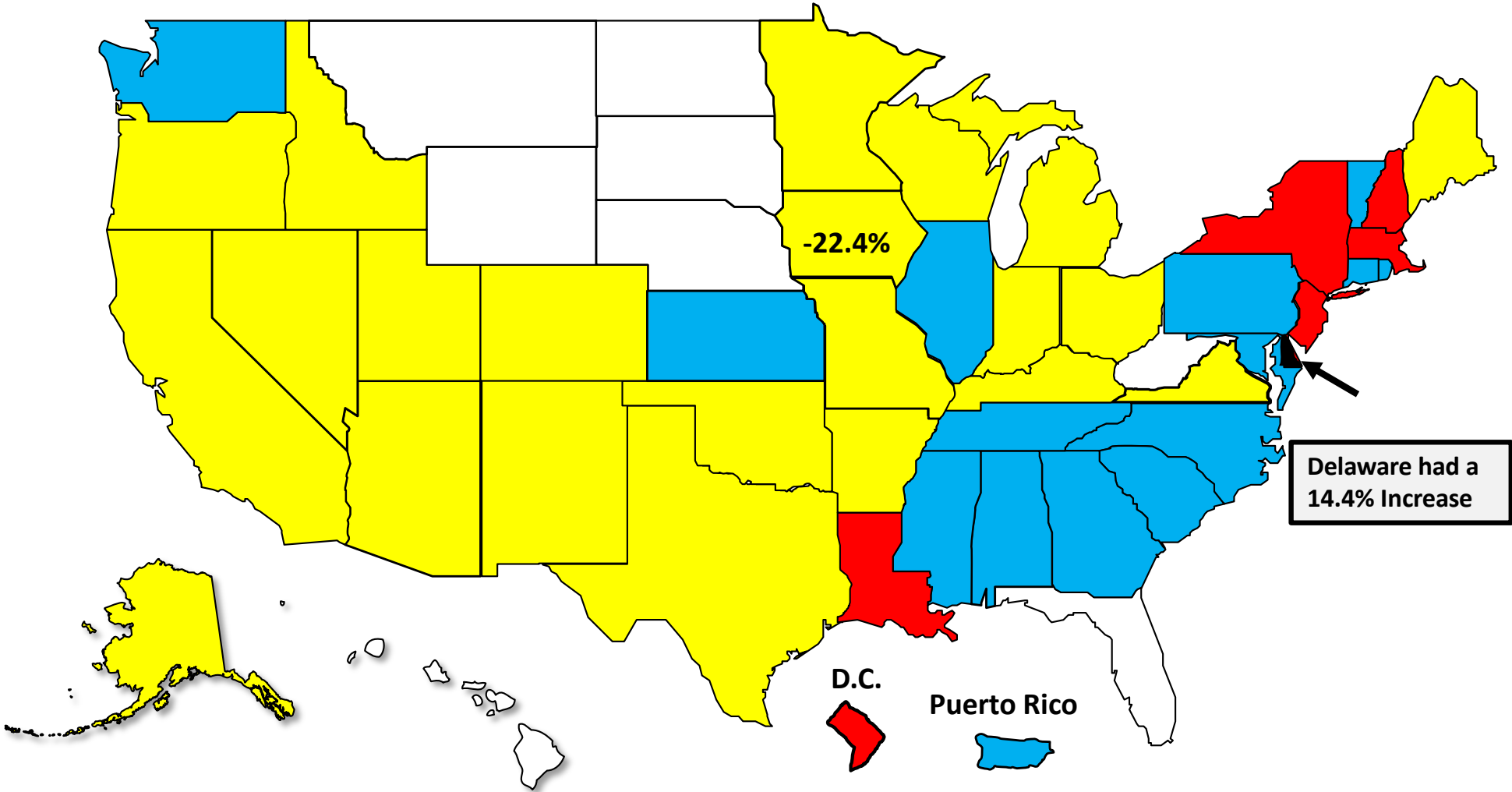
Iowa **National**

Bankruptcy Filing Trends

Calendar Year 2020 vs. 2019

National Average = 29.7 % Decrease

- Decline Under 20%
- Decline 20% – 30%
- Decline 30% - 40%
- Decline Over 40%





AMERICAN
BANKRUPTCY
INSTITUTE

www.abi.org