

# Bankruptcy Filing Trends in North Carolina



AMERICAN  
BANKRUPTCY  
INSTITUTE

Prepared by: **The American Bankruptcy Institute**

<http://www.abi.org/>

Updated  
February 2021

# North Carolina



## State at a Glance

	North Carolina	National
<b>Population (7/1/2019)</b>	<b>10,488,084</b>	<b>328,239,523</b>
- Change since 2010	10.0%	6.3%
- Foreign Born	7.9%	13.6%
<b>Size (Square Miles)</b>	<b>48,618</b>	<b>3,531,905</b>
<b>Median Household Income</b>	<b>\$54,602</b>	<b>\$62,843</b>
<b>Persons per Household</b>	<b>2.52</b>	<b>2.62</b>
<b>Per Capita Income</b>	<b>\$30,783</b>	<b>\$34,103</b>
<b>Median Home Value</b>	<b>\$172,500</b>	<b>\$217,500</b>
<b>Homeownership Rate</b>	<b>65.2%</b>	<b>64.0%</b>
<b>High School Graduate (or Higher)</b>	<b>87.8%</b>	<b>88.0%</b>
<b>College Graduate (or Higher)</b>	<b>31.3%</b>	<b>32.1%</b>
<b>Disabled</b>	<b>9.4%</b>	<b>8.6%</b>
<b>No Health Insurance</b>	<b>13.4%</b>	<b>9.5%</b>
<b>In Poverty</b>	<b>13.6%</b>	<b>10.5%</b>
<b>Source: U.S. Census Bureau January 2021</b>		

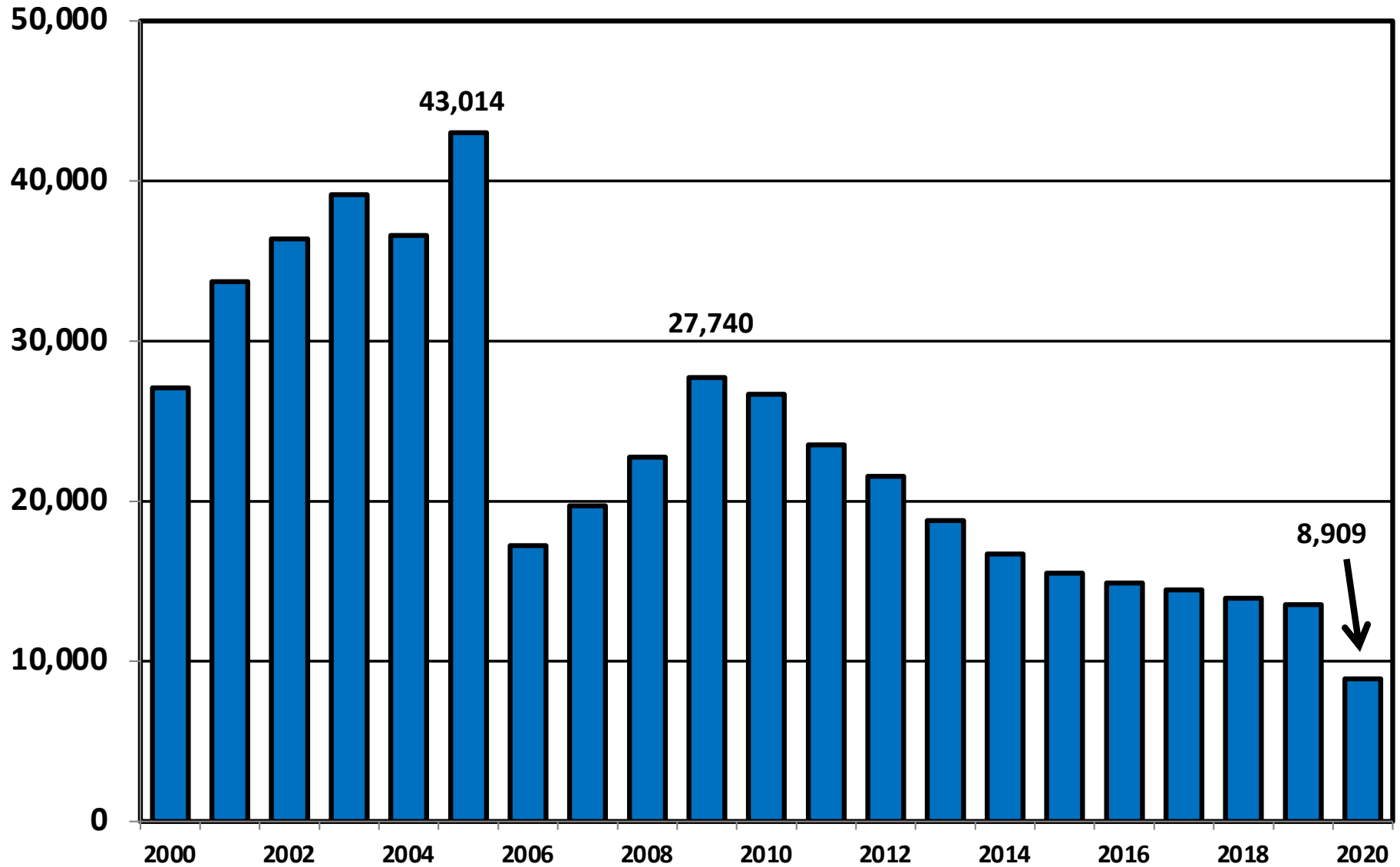
Prepared by: The American Bankruptcy Institute

<http://www.abi.org>

**Bankruptcy Filings in North Carolina  
Calendar Years 2000 - 2020**

<b>Year</b>	<b>Total</b>	<b>Chapter 7</b>	<b>Chapter 11</b>	<b>Chapter 13</b>	<b>Other Cases</b>
2000	27,091	11,288	97	15,698	8
2001	33,712	15,562	162	17,978	10
2002	36,382	17,466	144	18,764	8
2003	39,165	19,341	210	19,589	25
2004	36,604	18,652	151	17,796	5
2005	43,014	26,781	90	16,138	5
2006	17,241	7,781	97	9,355	8
2007	19,710	8,773	130	10,799	8
2008	22,755	10,930	198	11,610	17
2009	27,740	14,832	287	12,610	11
2010	26,674	14,352	311	11,993	18
2011	23,535	11,618	288	11,616	13
2012	21,553	9,379	256	11,901	17
2013	18,803	7,929	214	10,652	8
2014	16,719	6,807	168	9,735	9
2015	15,495	6,253	152	9,078	12
2016	14,899	6,013	115	8,761	10
2017	14,459	6,084	156	8,207	12
2018	13,949	5,692	135	8,108	14
2019	13,531	5,372	119	8,023	17
2020	8,909	4,137	110	4,657	5

# Total Bankruptcy Cases Filed in North Carolina Calendar Years 2000 - 2020



# Total Filings Relative to Population 2000 - 2020



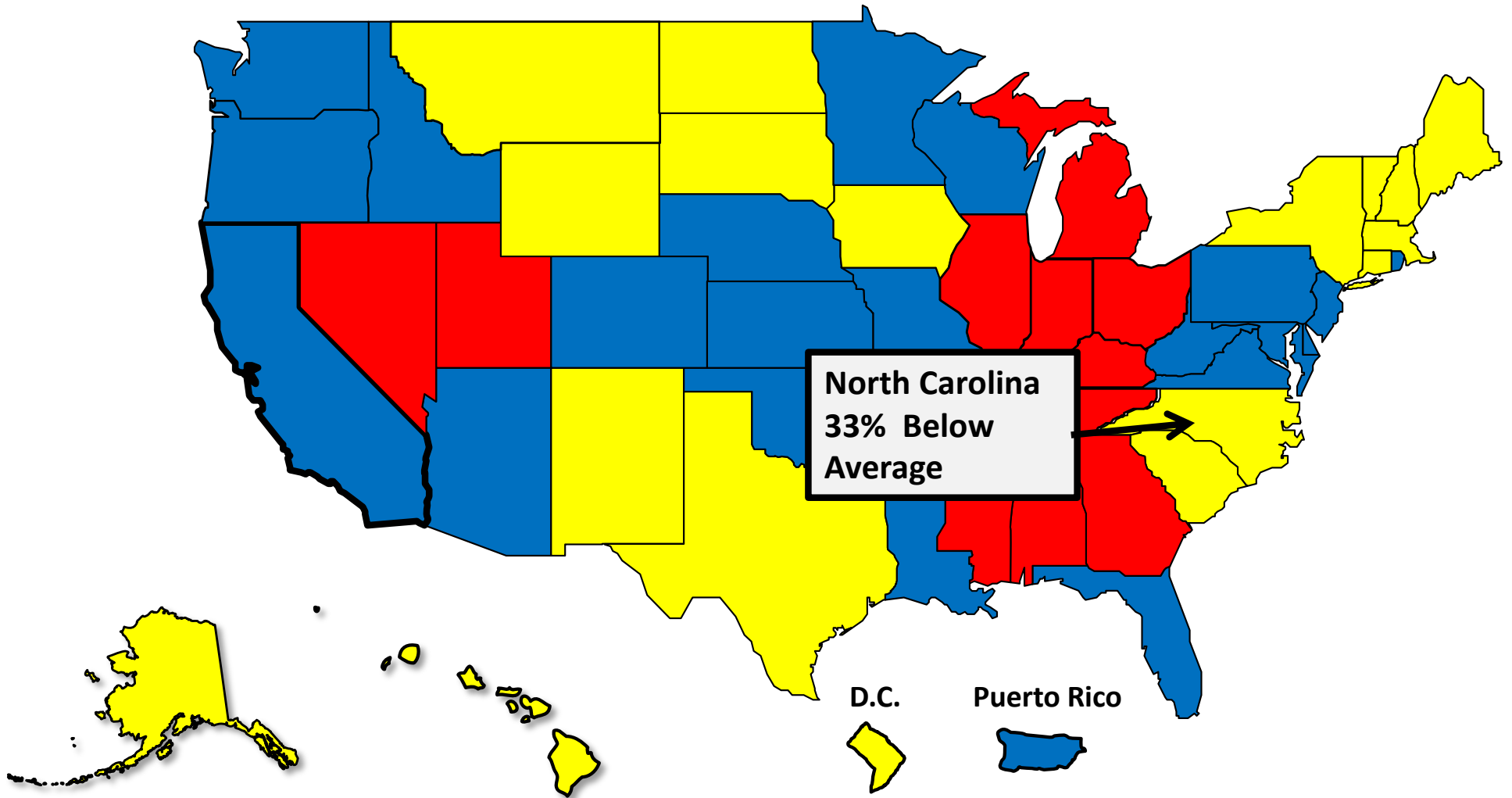
More than 25%  
Above Average



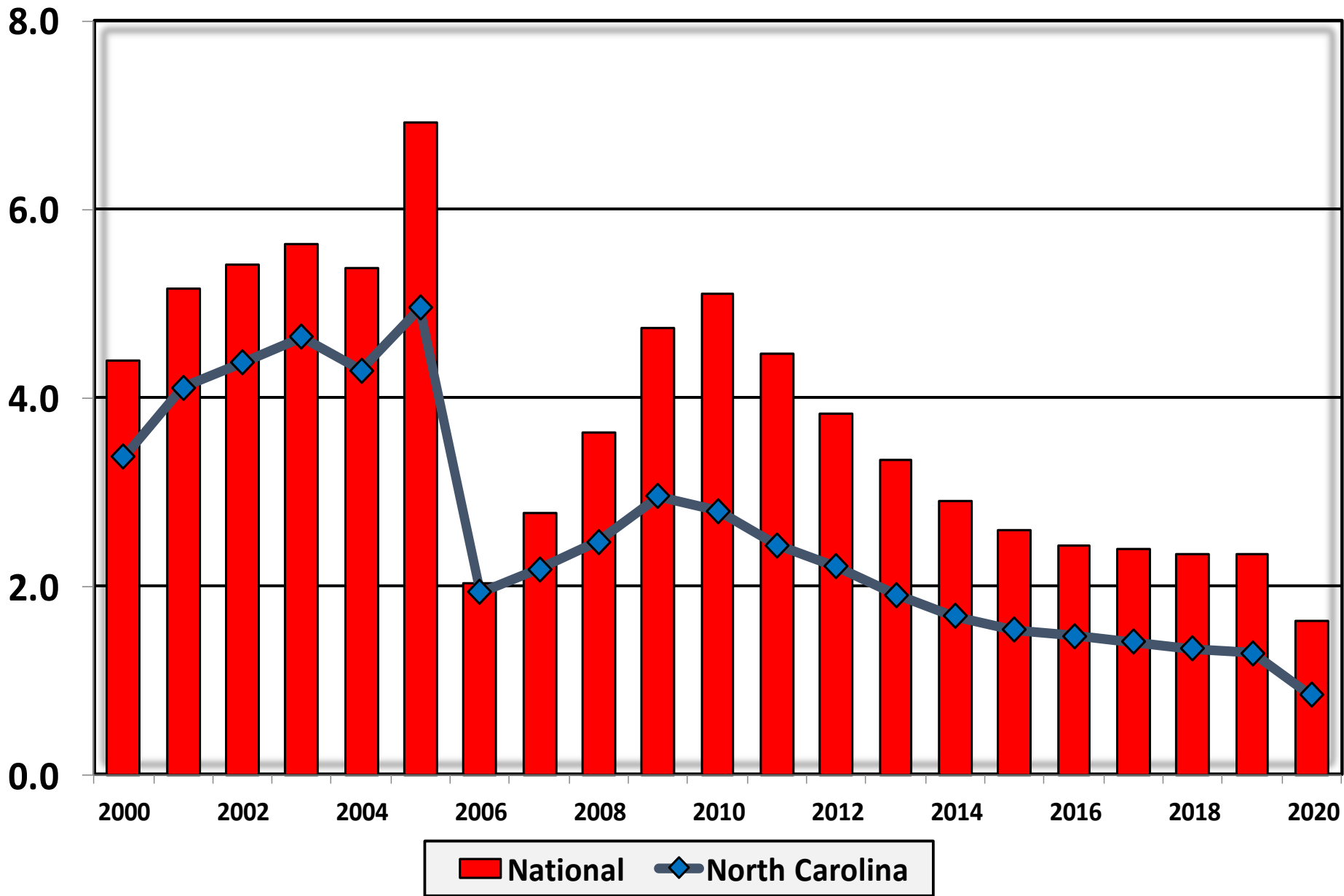
Within 25%  
of Average



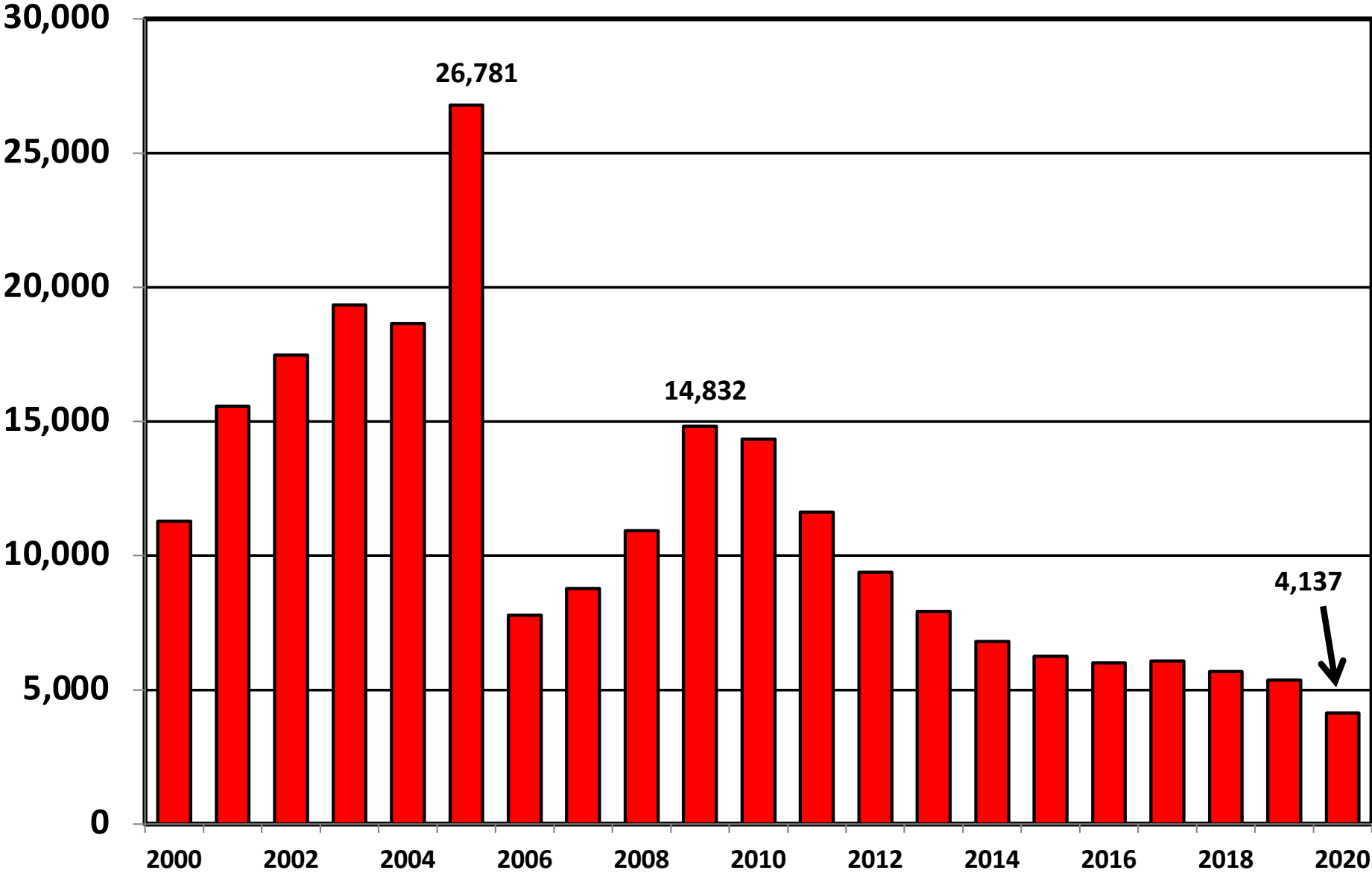
More than 25%  
Below Average



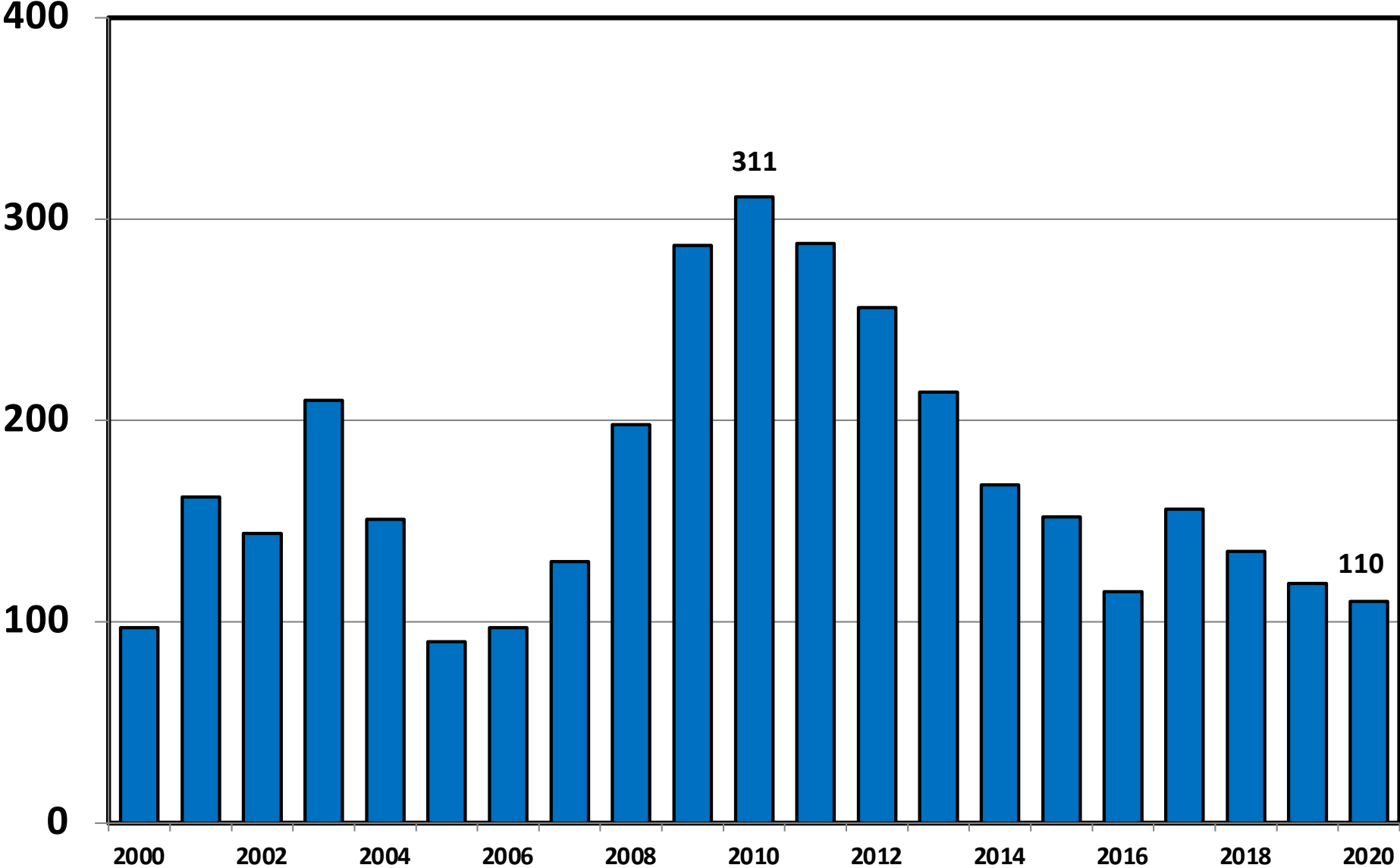
**Bankruptcy Filings per 1,000 Population  
North Carolina vs. National Average 2000 - 2020**



# Chapter 7 Cases Filed In North Carolina Calendar Years 2000 - 2020

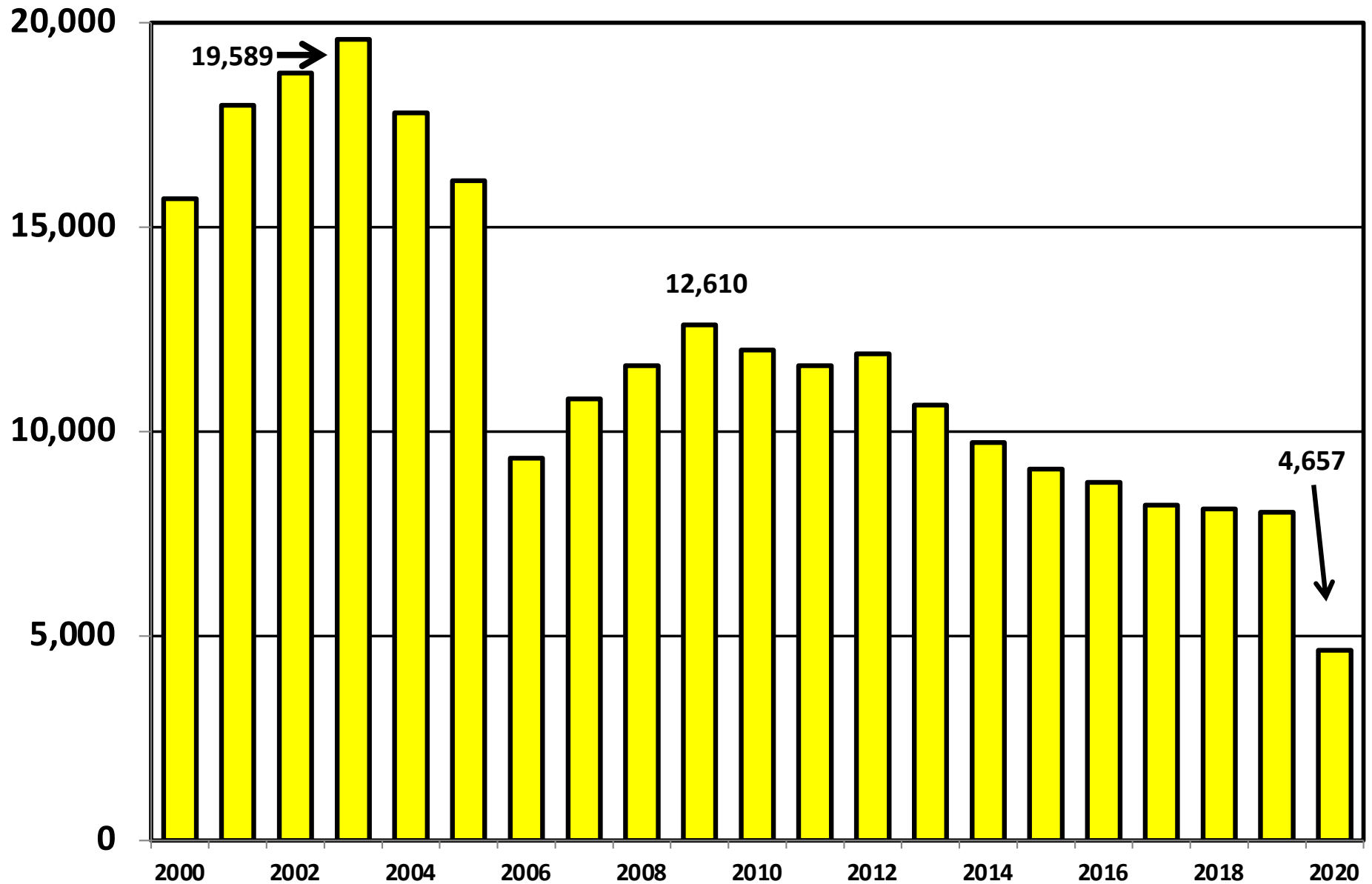


# Chapter 11 Cases Filed in North Carolina 2000 - 2020

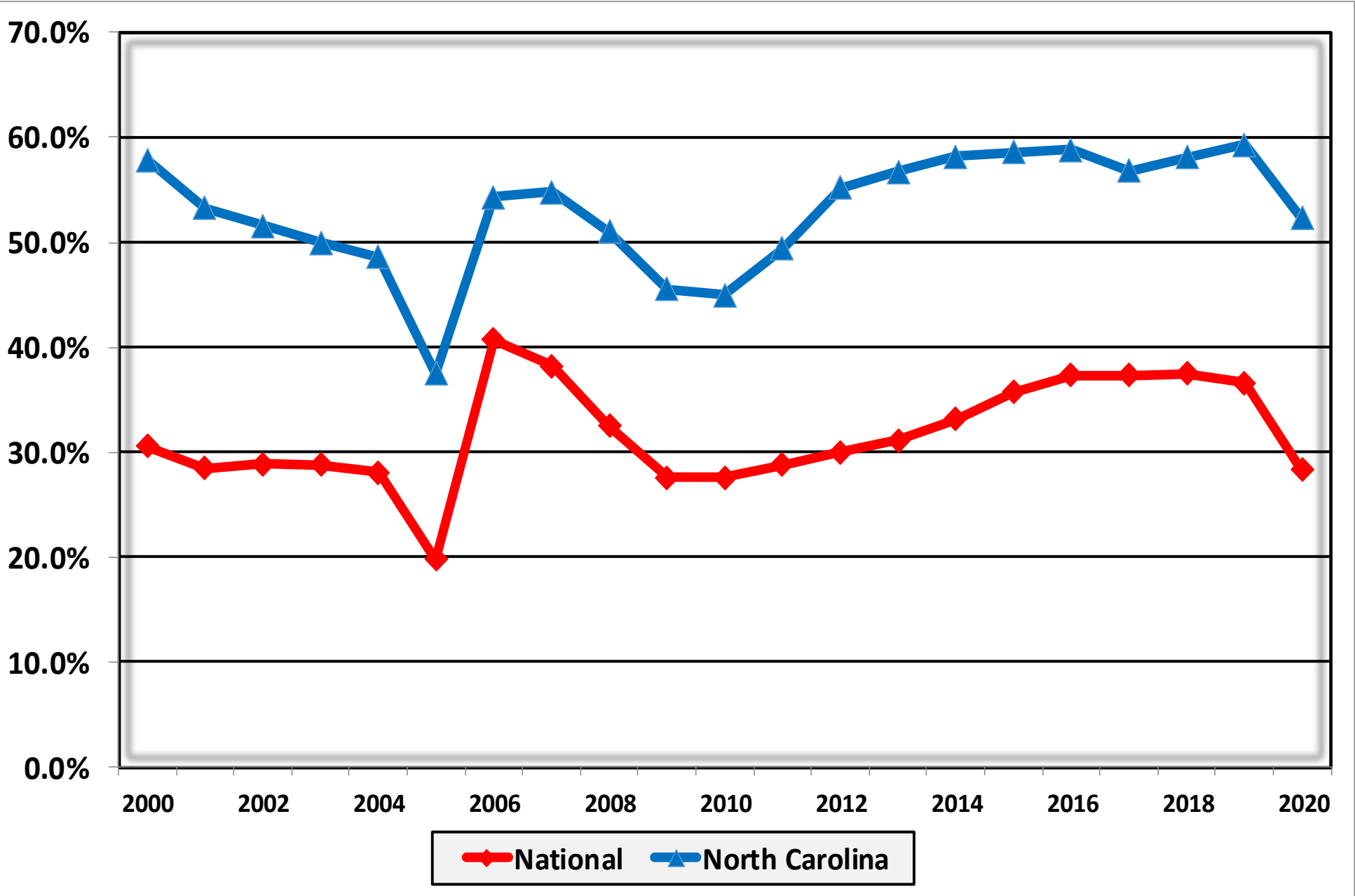




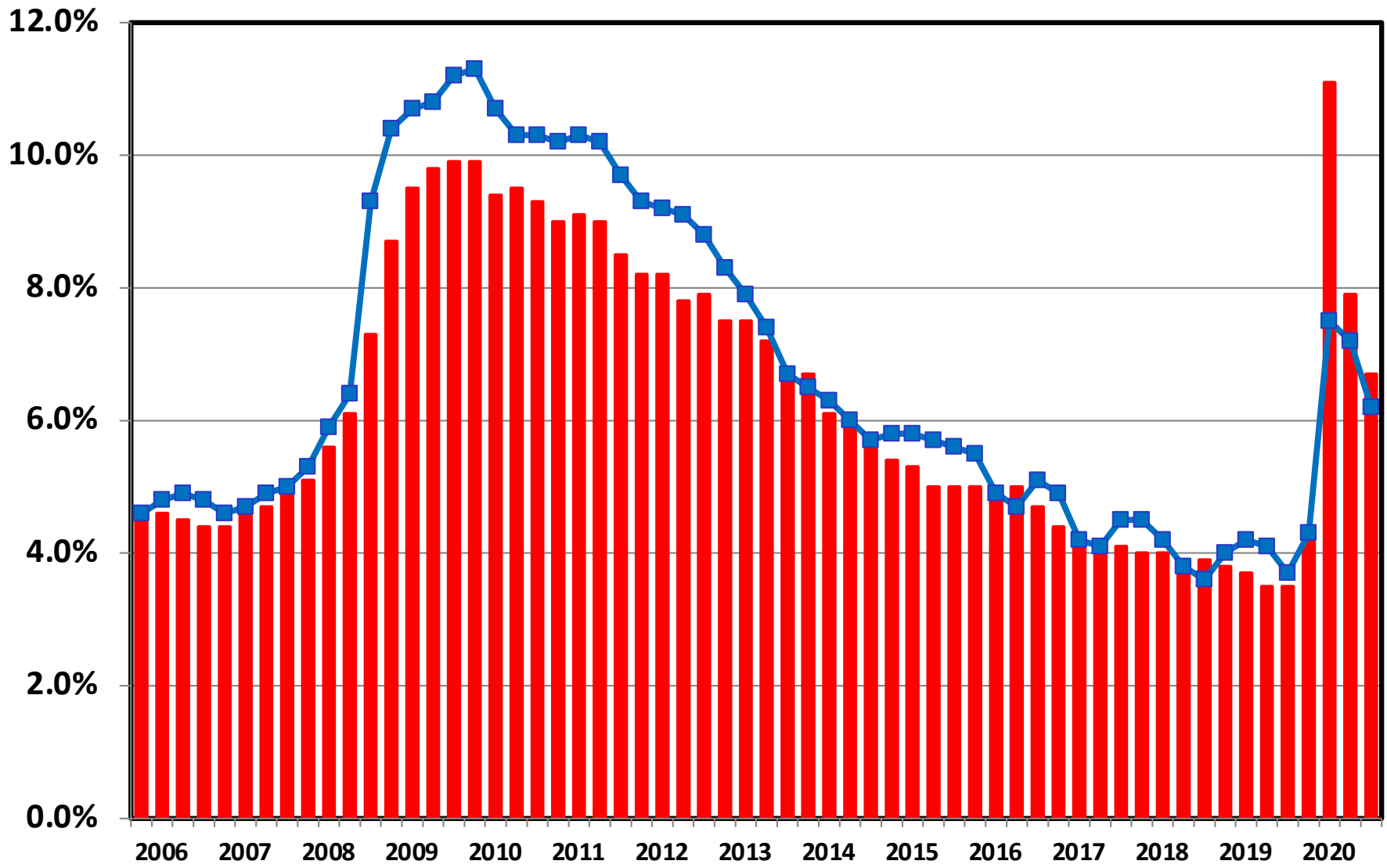
# Chapter 13 Cases Filed in North Carolina 2000 - 2020



**Percent of Cases Filed as Chapter 13  
Calendar Years 2000 - 2020**



# Unemployment Rate By Quarter 2006 - 2020



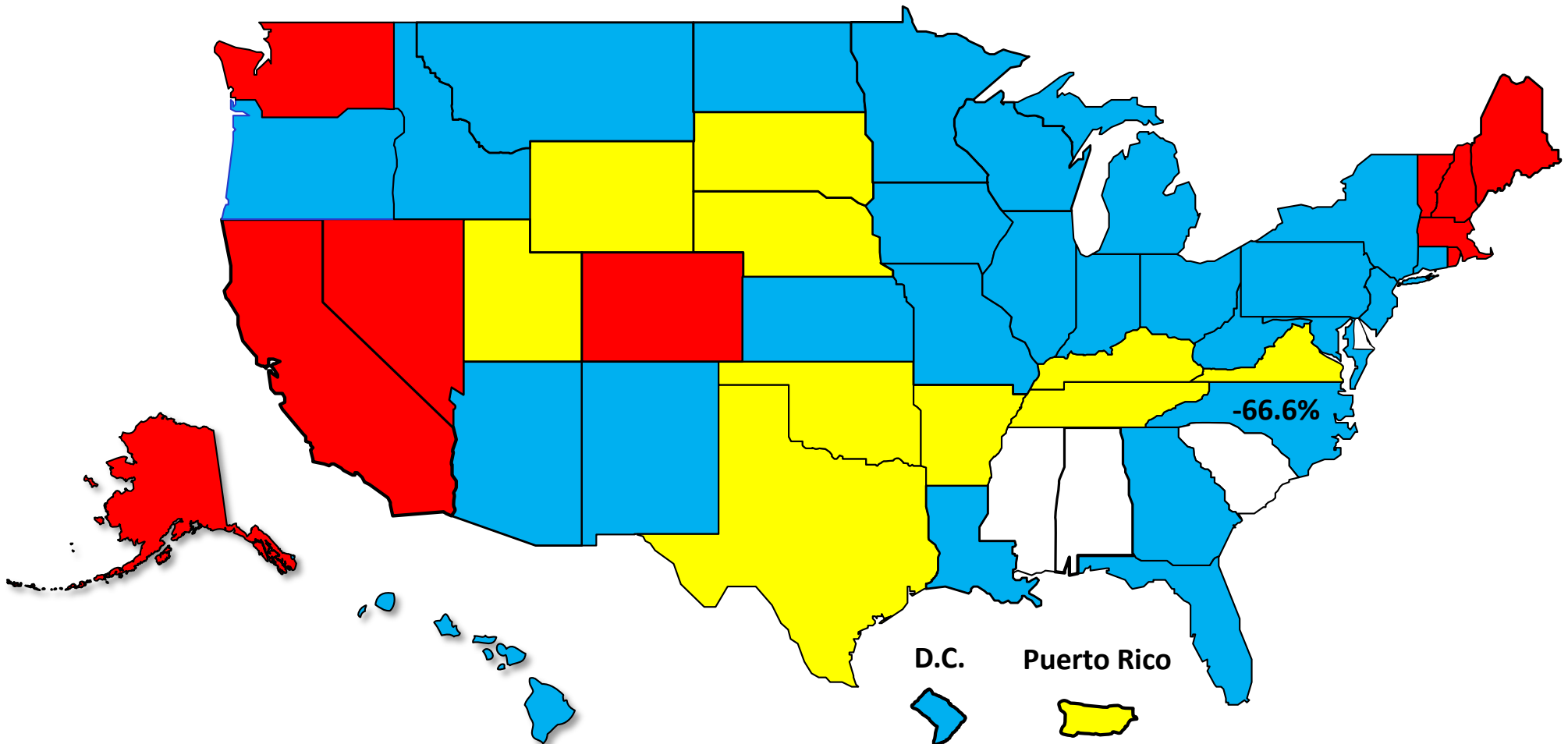
**■ National**    **—■ North Carolina**

Source: Bureau of Labor Statistics

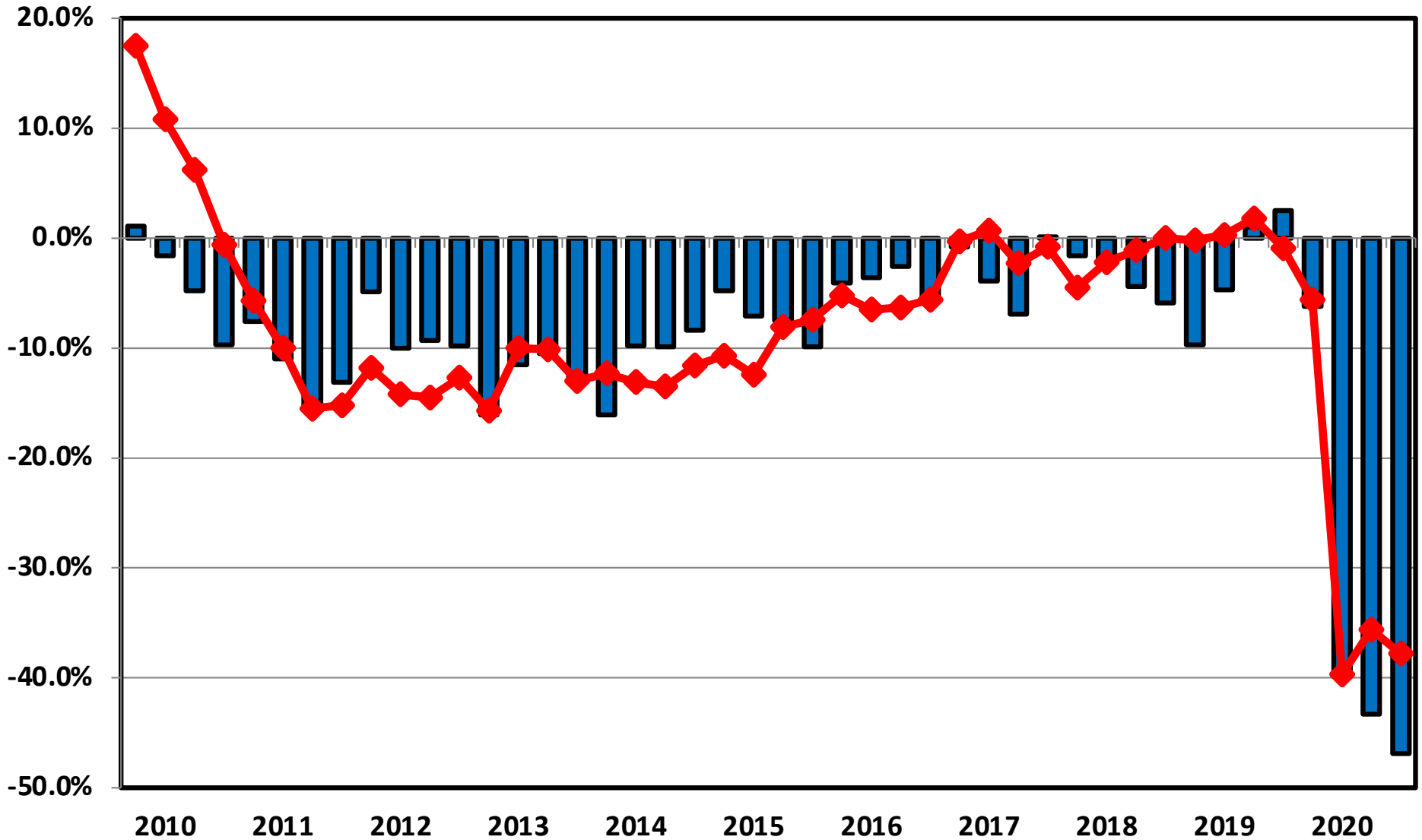
# Percent Change in Total Filings Calendar Year 2020 Compared to 2010

(National Average = 65.8% Decrease)

## Amount of Decrease



**Filing Trends By Quarter North Carolina vs. National Average  
(Percent Change From Same Quarter One Year Prior)**



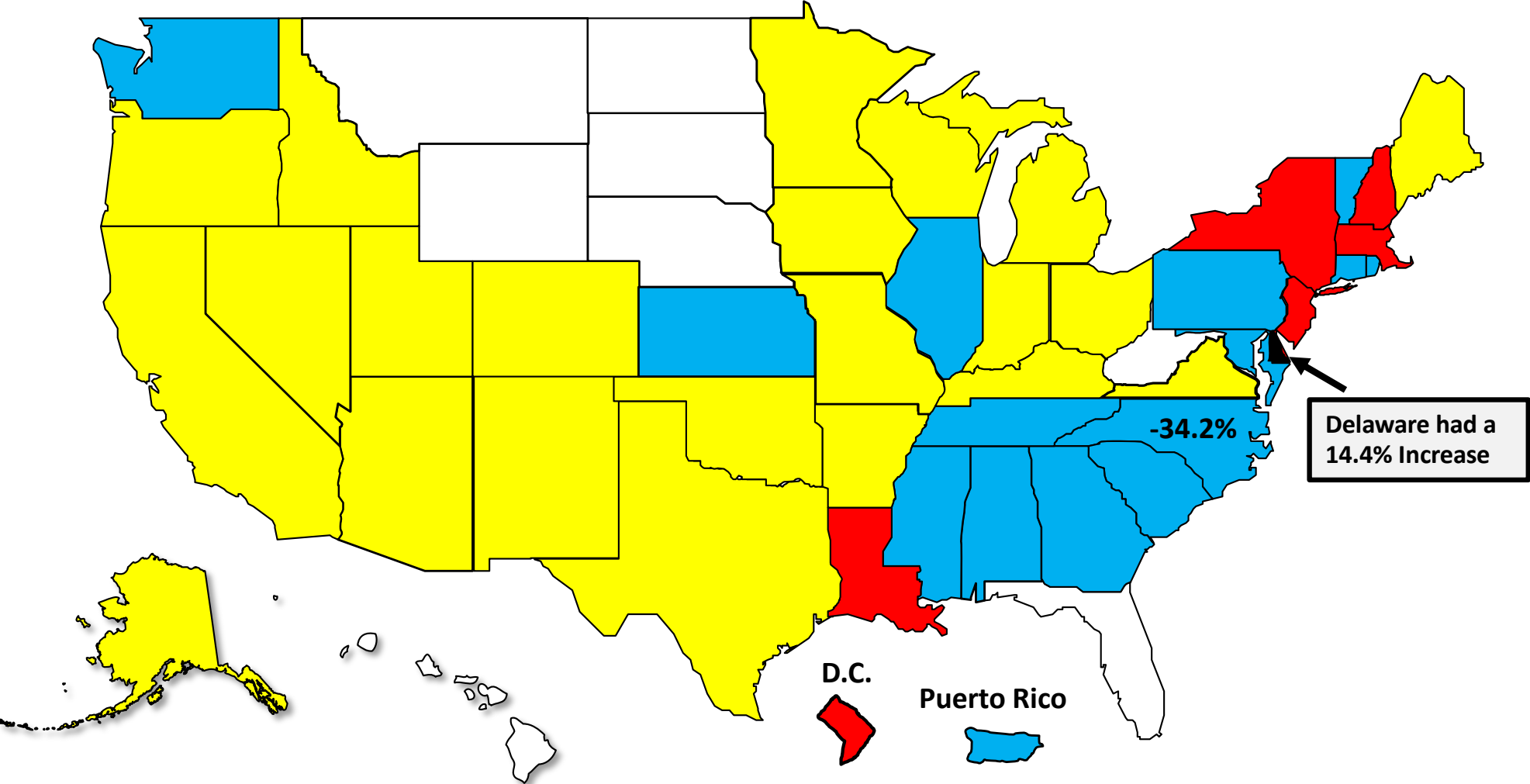
**North Carolina** **National**

# Bankruptcy Filing Trends

Calendar Year 2020 vs. 2019

National Average = 29.7 % Decrease

- Decline Under 20%
- Decline 20% – 30%
- Decline 30% - 40%
- Decline Over 40%





AMERICAN  
BANKRUPTCY  
INSTITUTE

[www.abi.org](http://www.abi.org)