

Bankruptcy Filing Trends in Oklahoma



Prepared by: **The American Bankruptcy Institute**

<http://www.abi.org/>



AMERICAN
BANKRUPTCY
INSTITUTE

Updated
February 2021

Oklahoma



State at a Glance

	Oklahoma	National
Population (7/1/2019)	3,956,971	328,239,523
- Change since 2010	5.5%	6.3%
- Foreign Born	6.0%	13.6%
Size (Square Miles)	68,595	3,531,905
Median Household Income	\$52,919	\$62,843
Persons per Household	2.58	2.62
Per Capita Income	\$28,422	\$34,103
Median Home Value	\$136,800	\$217,500
Homeownership Rate	65.6%	64.0%
High School Graduate (or Higher)	88.0%	88.0%
College Graduate (or Higher)	25.5%	32.1%
Disabled	11.5%	8.6%
No Health Insurance	16.8%	9.5%
In Poverty	15.2%	10.5%
Source: U.S. Census Bureau January 2021		

Prepared by: The American Bankruptcy Institute

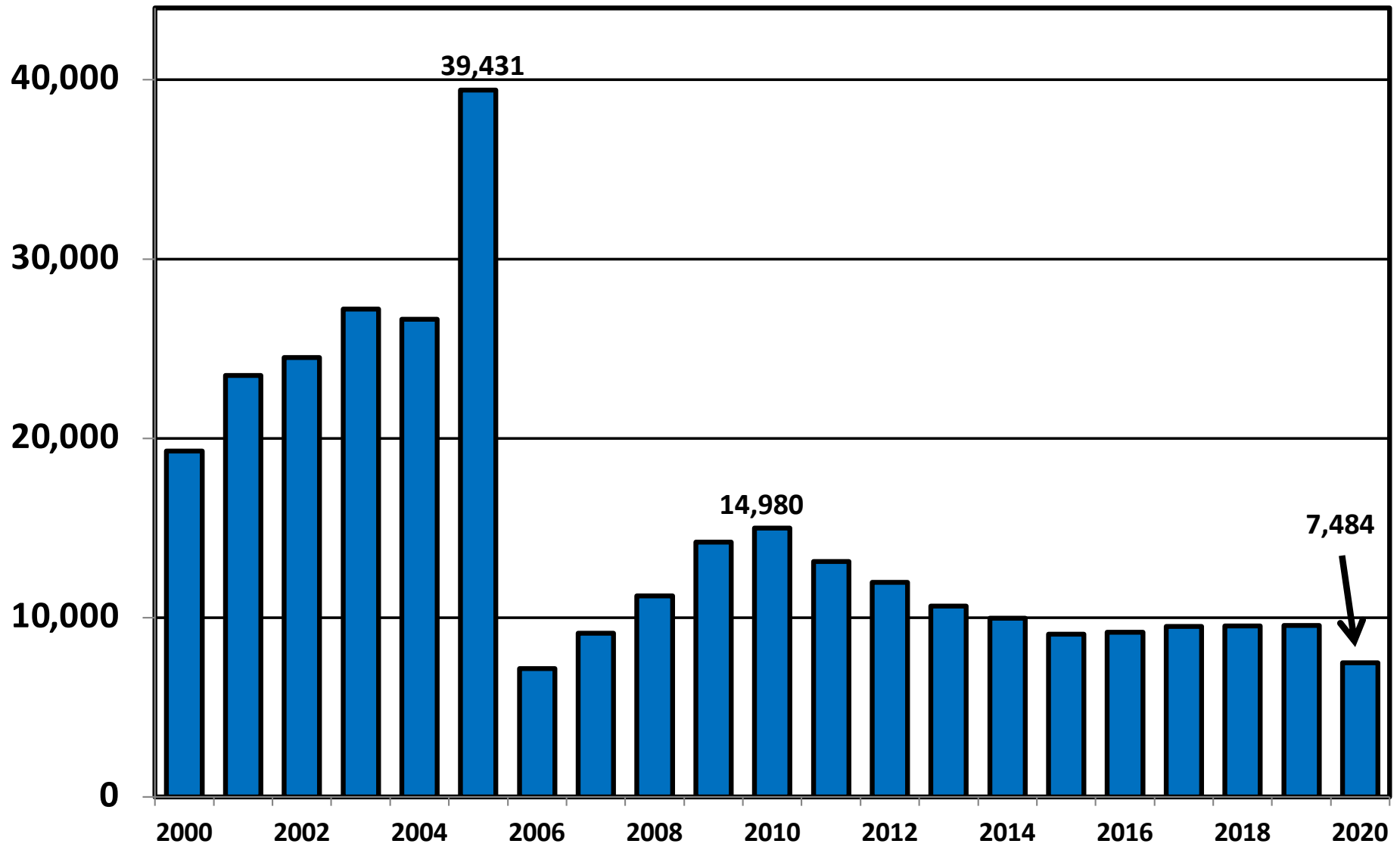
<http://www.abi.org>

**Bankruptcy Filings in Oklahoma
Calendar Years 2000 - 2020**

Year	Total	Chapter 7	Chapter 11	Chapter 13	Other Cases
2000	19,279	16,479	79	2,699	22
2001	23,504	20,533	80	2,858	33
2002	24,497	21,706	61	2,694	36
2003	27,202	24,213	70	2,873	46
2004	26,652	23,502	63	3,080	7
2005	39,431	36,288	44	3,087	12
2006	7,145	5,379	39	1,716	11
2007	9,127	7,067	36	2,012	12
2008	11,224	8,942	48	2,225	9
2009	14,209	11,807	67	2,325	10
2010	14,980	12,409	87	2,470	14
2011	13,119	10,841	47	2,214	17
2012	11,970	10,000	27	1,929	14
2013	10,636	8,945	33	1,647	11
2014	9,955	8,276	33	1,639	7
2015	9,065	7,535	21	1,503	6
2016	9,183	7,567	37	1,570	9
2017	9,517	7,863	22	1,627	5
2018	9,530	7,826	21	1,677	6
2019	9,552	7,850	41	1,641	20
2020	7,484	6,528	21	923	12

Total Bankruptcy Cases Filed in Oklahoma

Calendar Years 2000 - 2020



Total Filings Relative to Population 2000 - 2020



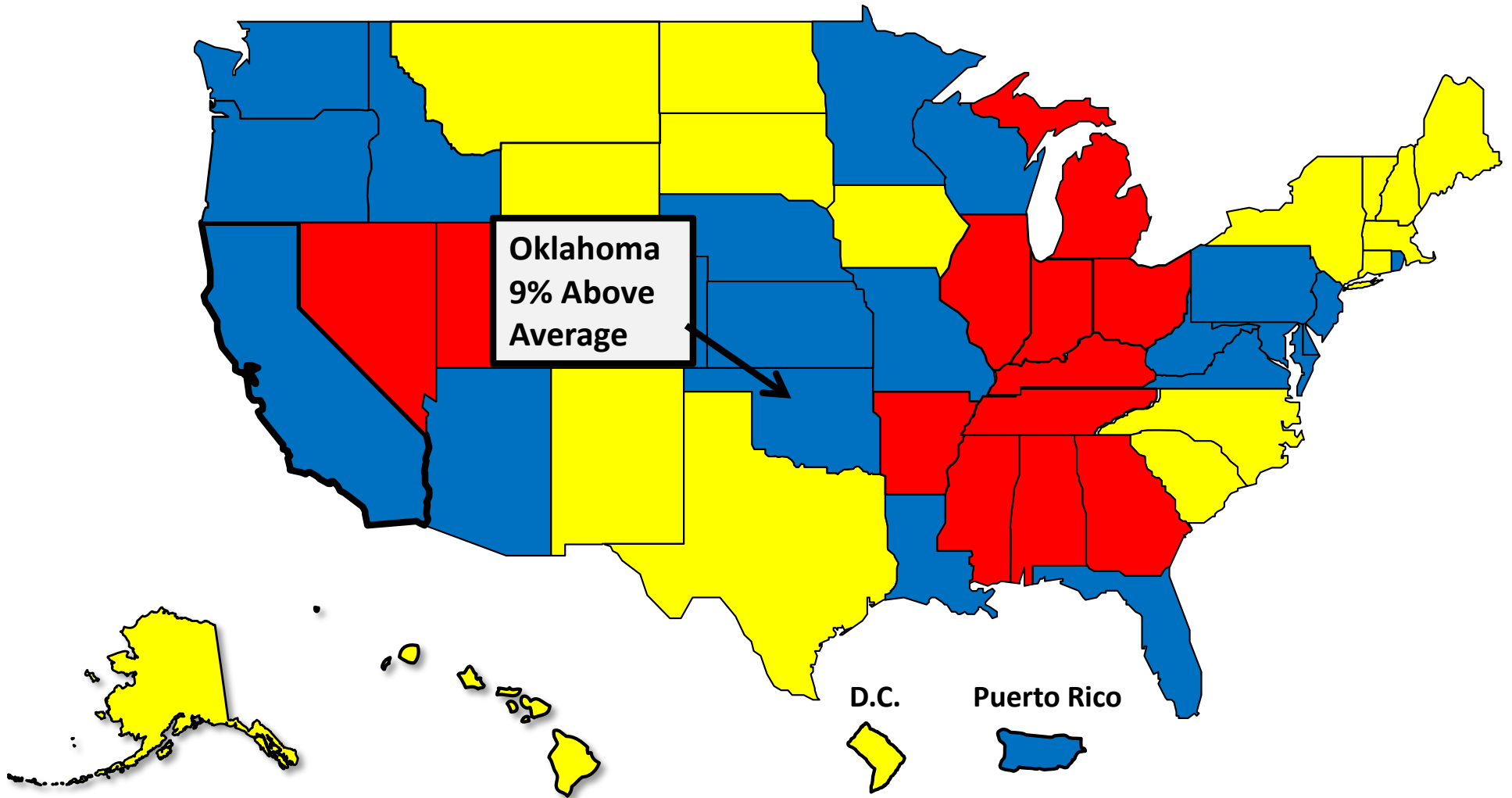
More than 25%
Above Average



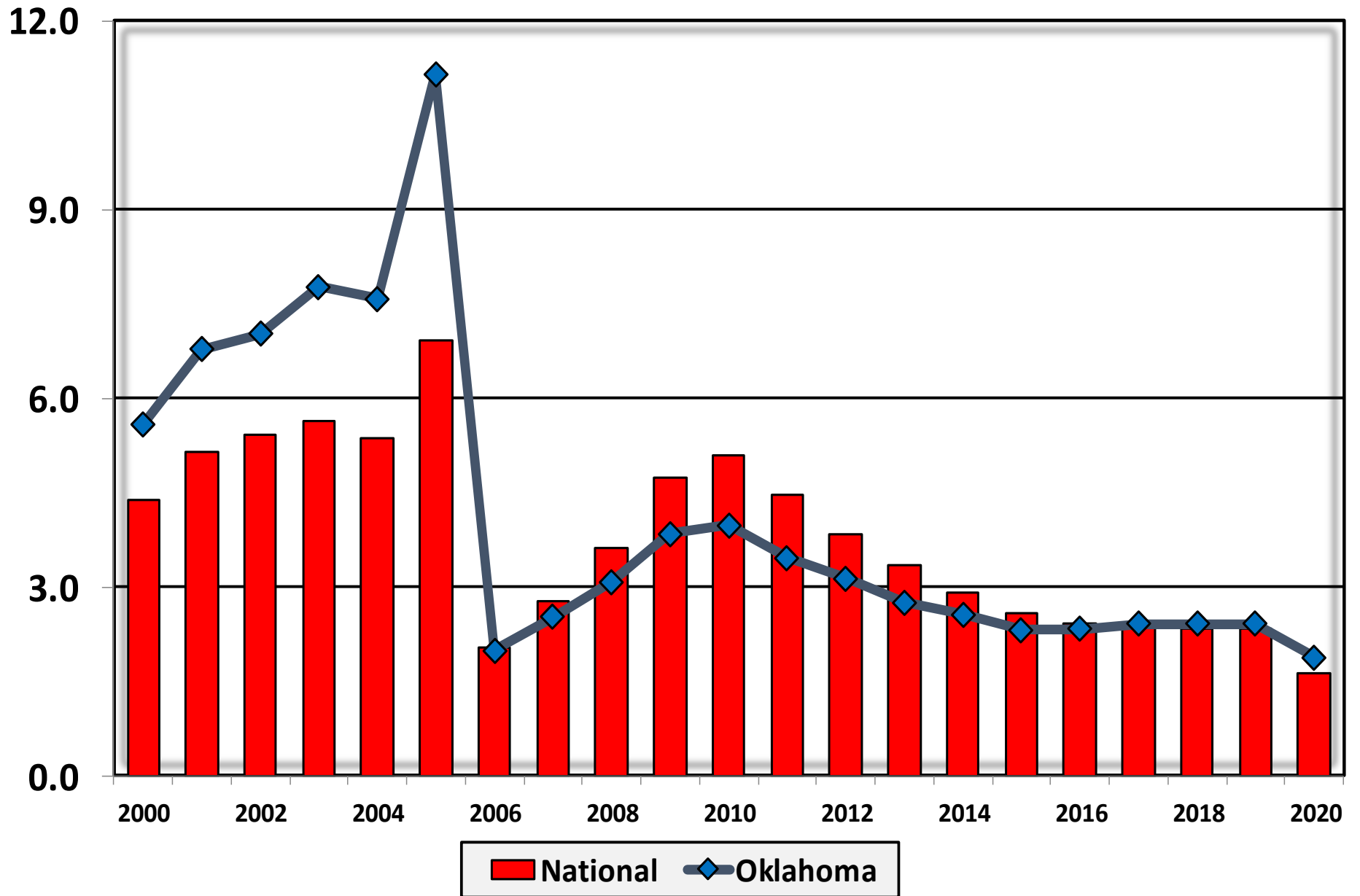
Within 25%
of Average



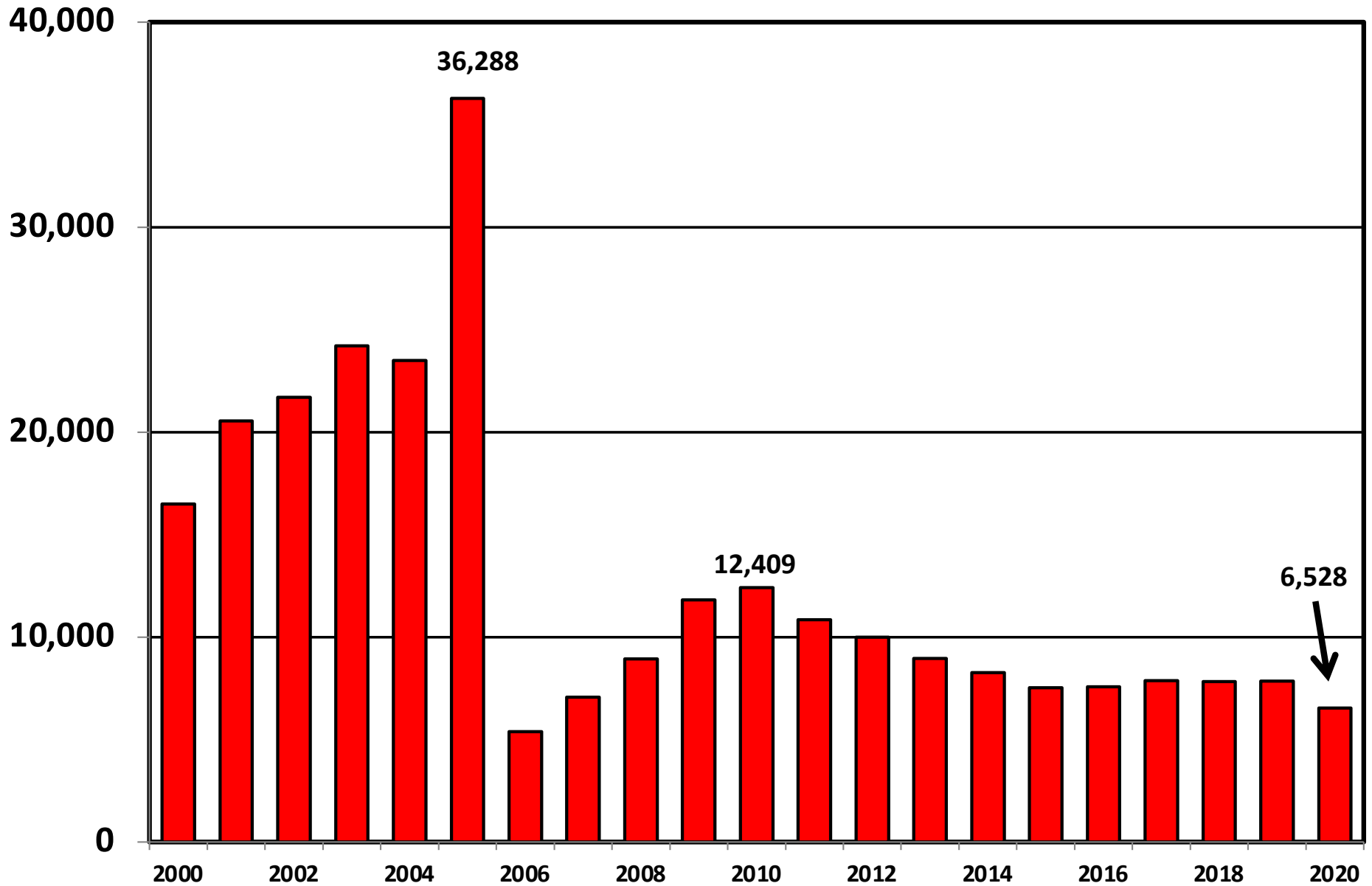
More than 25%
Below Average



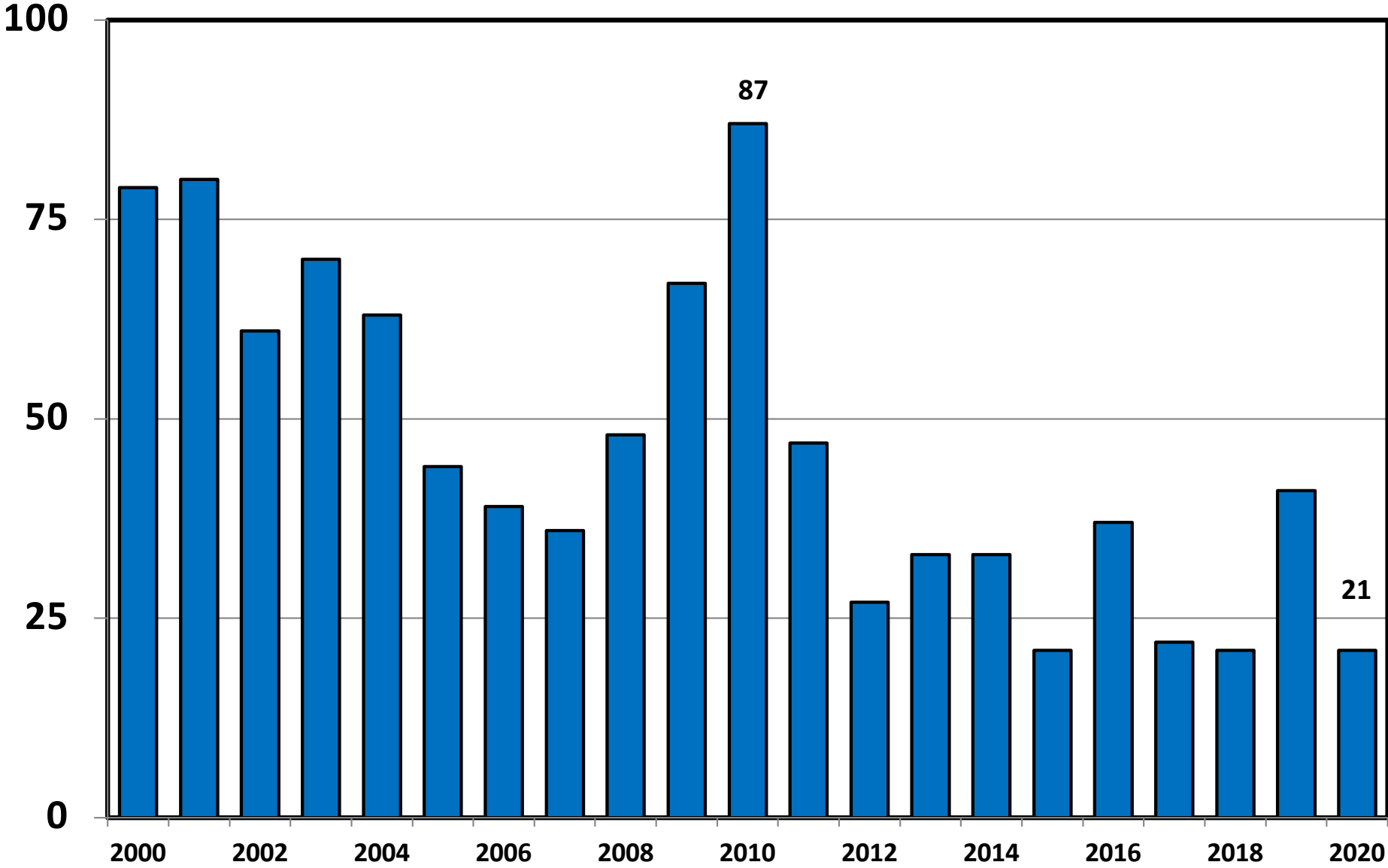
Bankruptcy Filings per 1,000 Population Oklahoma vs. National Average 2000 - 2020



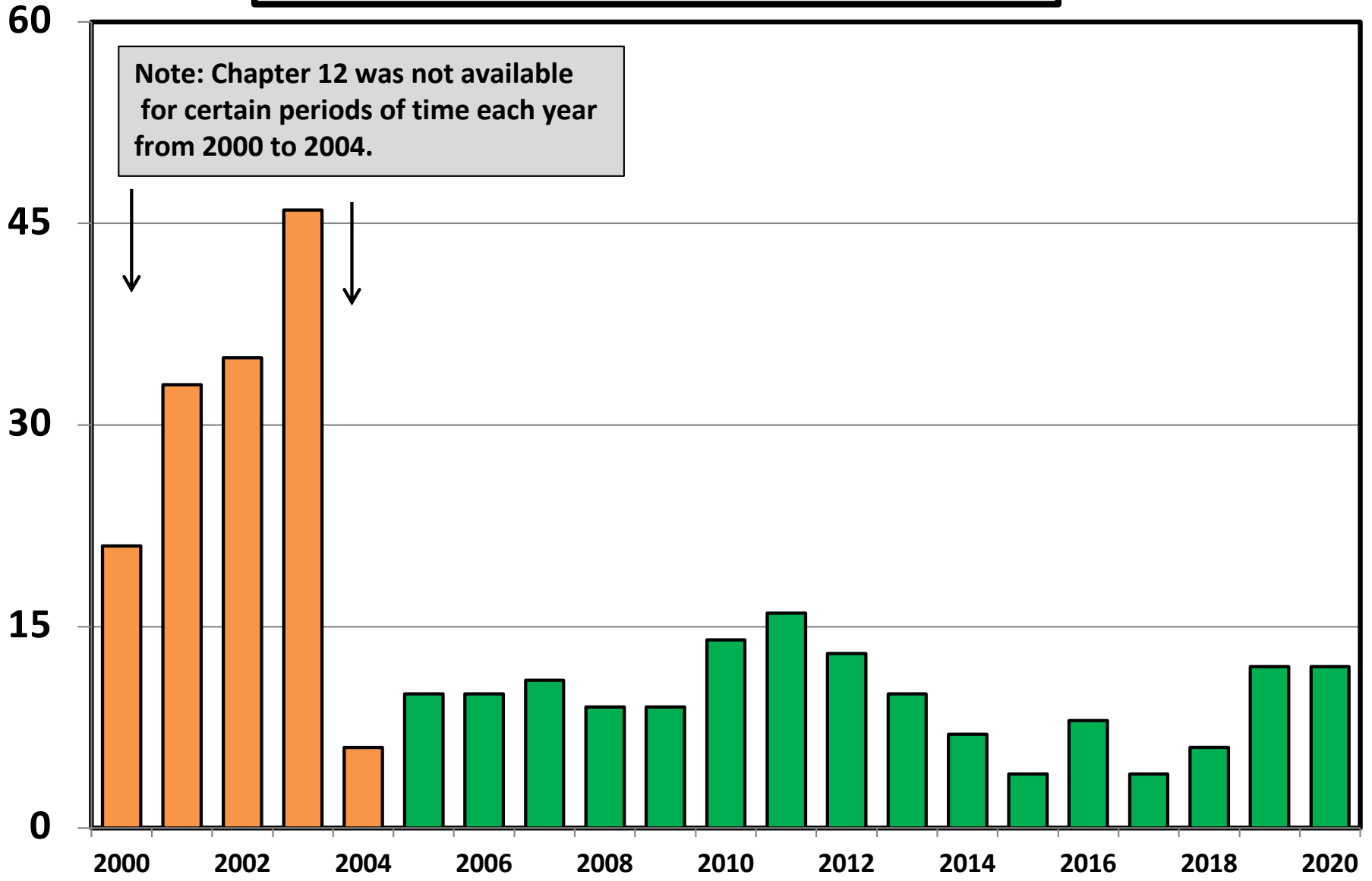
Chapter 7 Cases Filed In Oklahoma Calendar Years 2000 - 2020



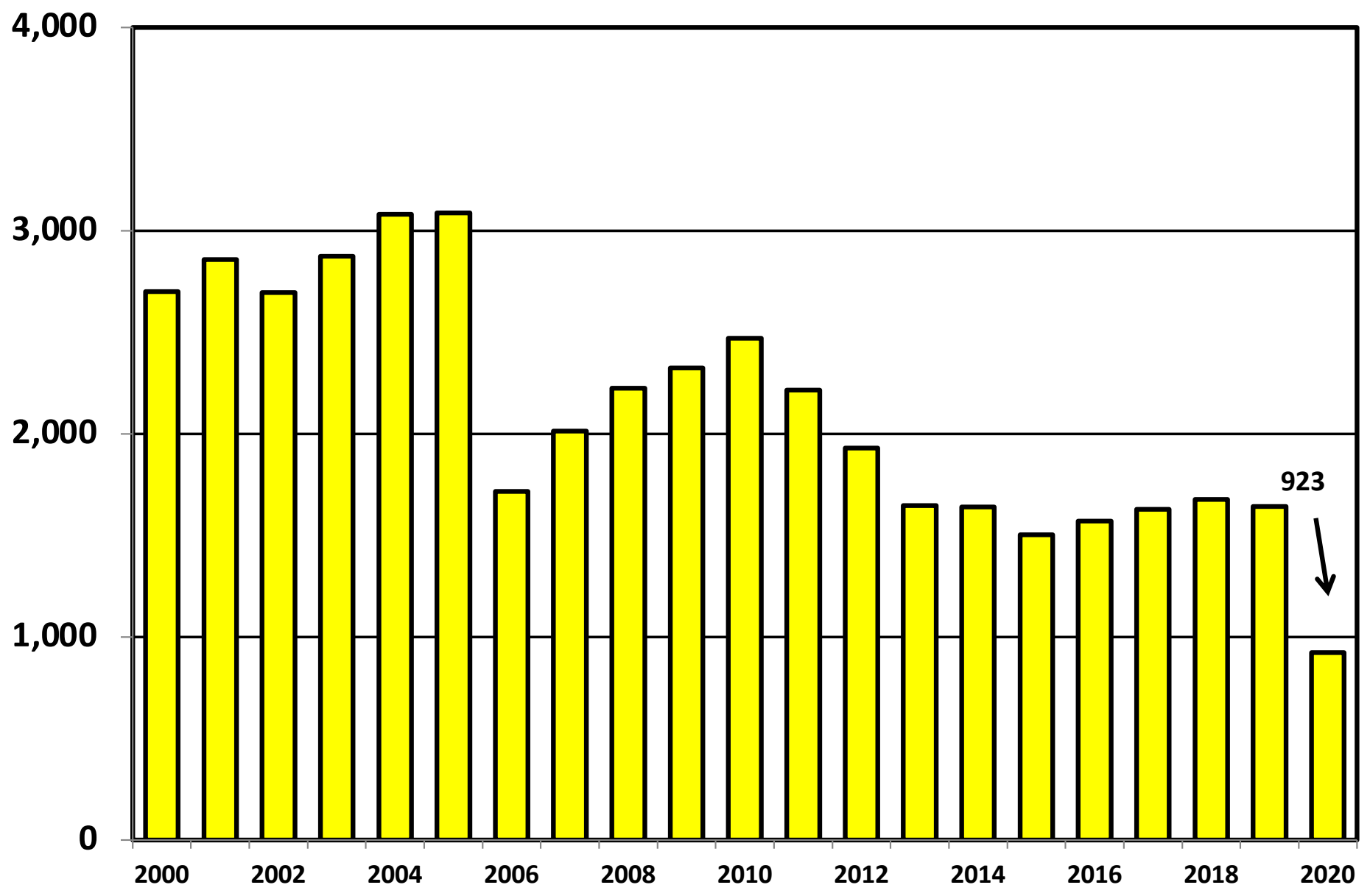
Chapter 11 Cases Filed in Oklahoma 2000 - 2020



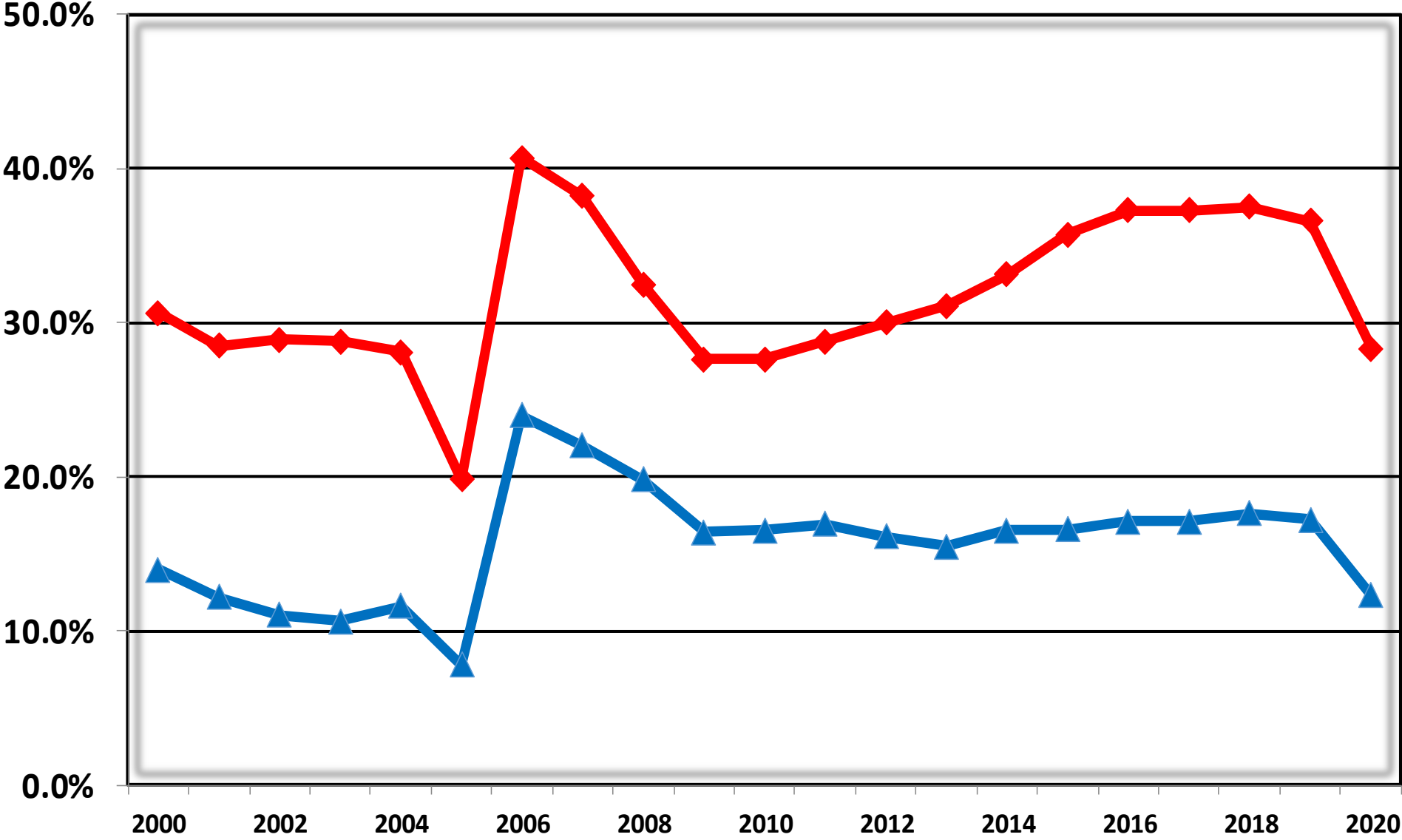
Chapter 12 Cases Filed in Oklahoma 2000 - 2020



Chapter 13 Cases Filed in Oklahoma 2000 - 2020

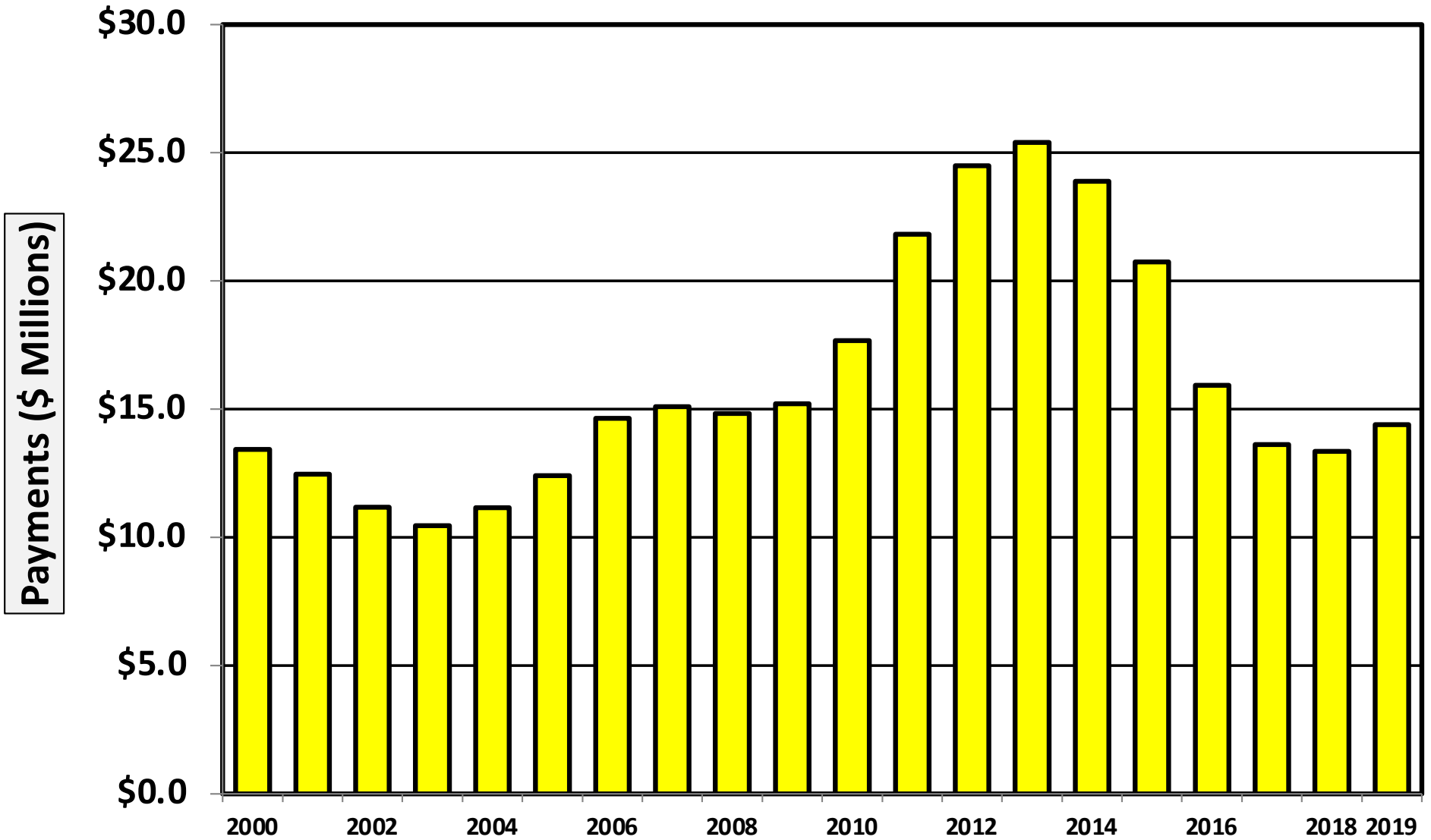


**Percent of Cases Filed as Chapter 13
Calendar Years 2000 - 2020**



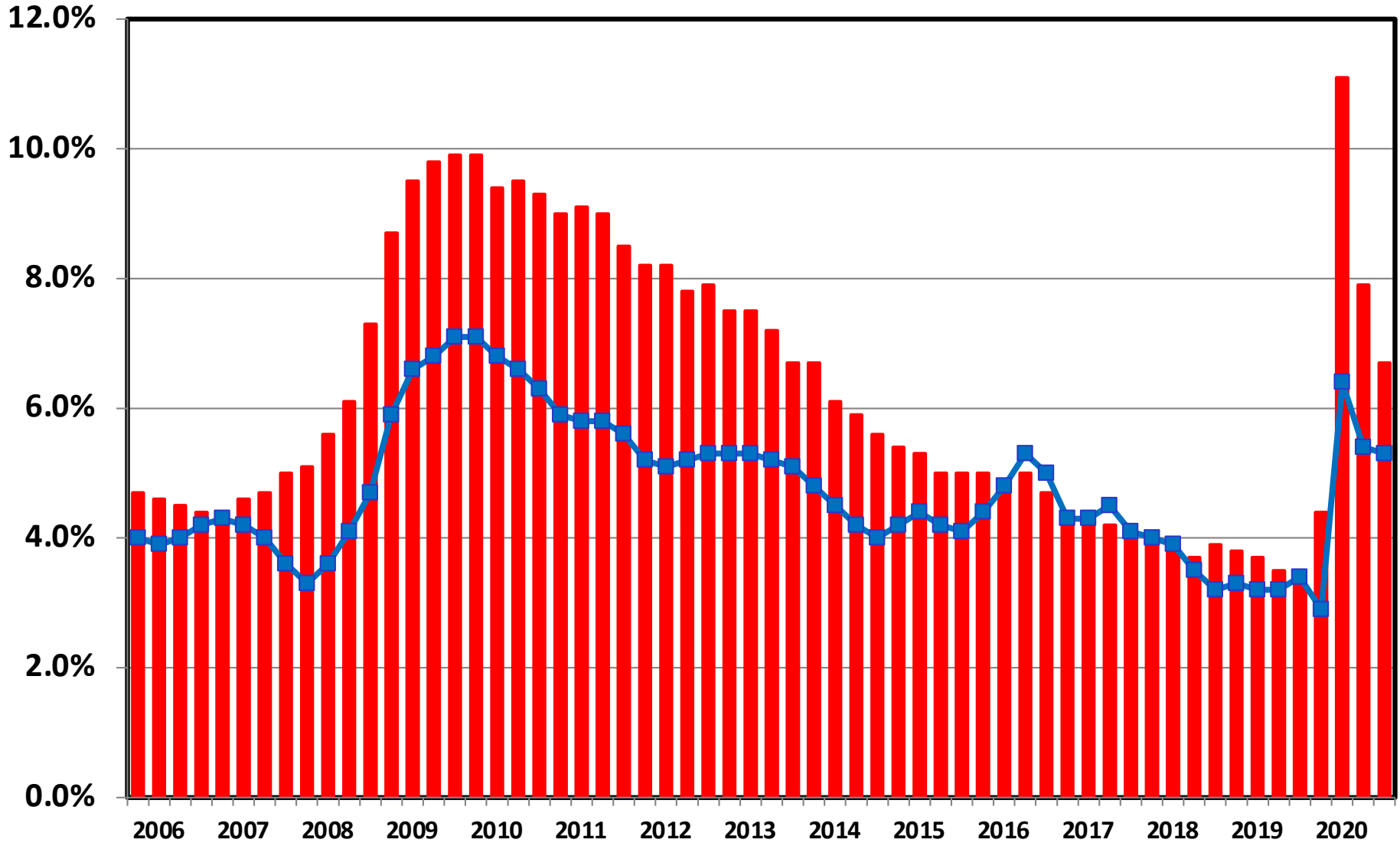
◆ National ▲ Oklahoma

Chapter 13 Cases in Oklahoma
Amount (in Millions) Paid to Unsecured Creditors
Fiscal Years 2000 - 2019



Source: Executive Office for United States Trustees

Unemployment Rate By Quarter 2006 - 2020



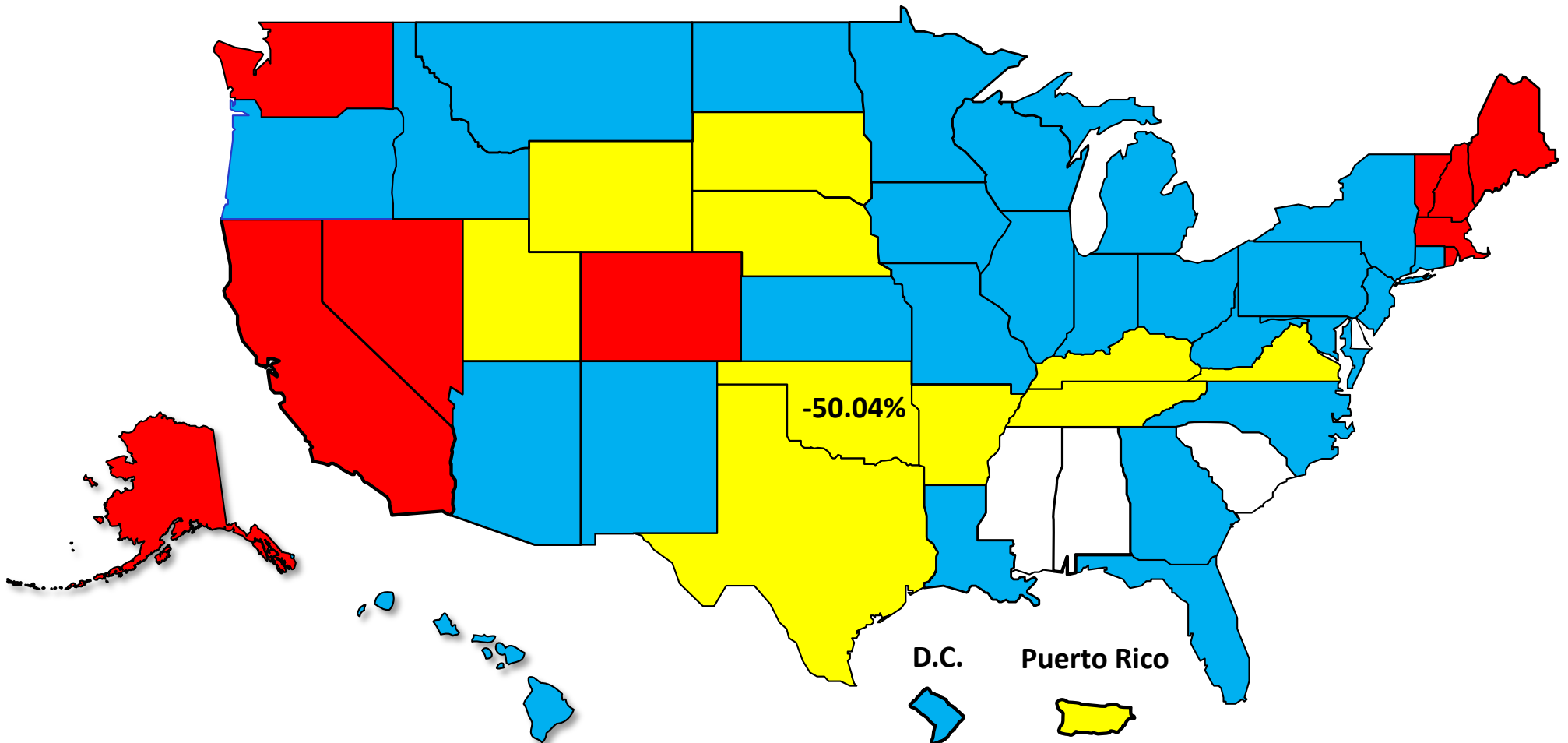
■ National ■ Oklahoma

Source: Bureau of Labor Statistics

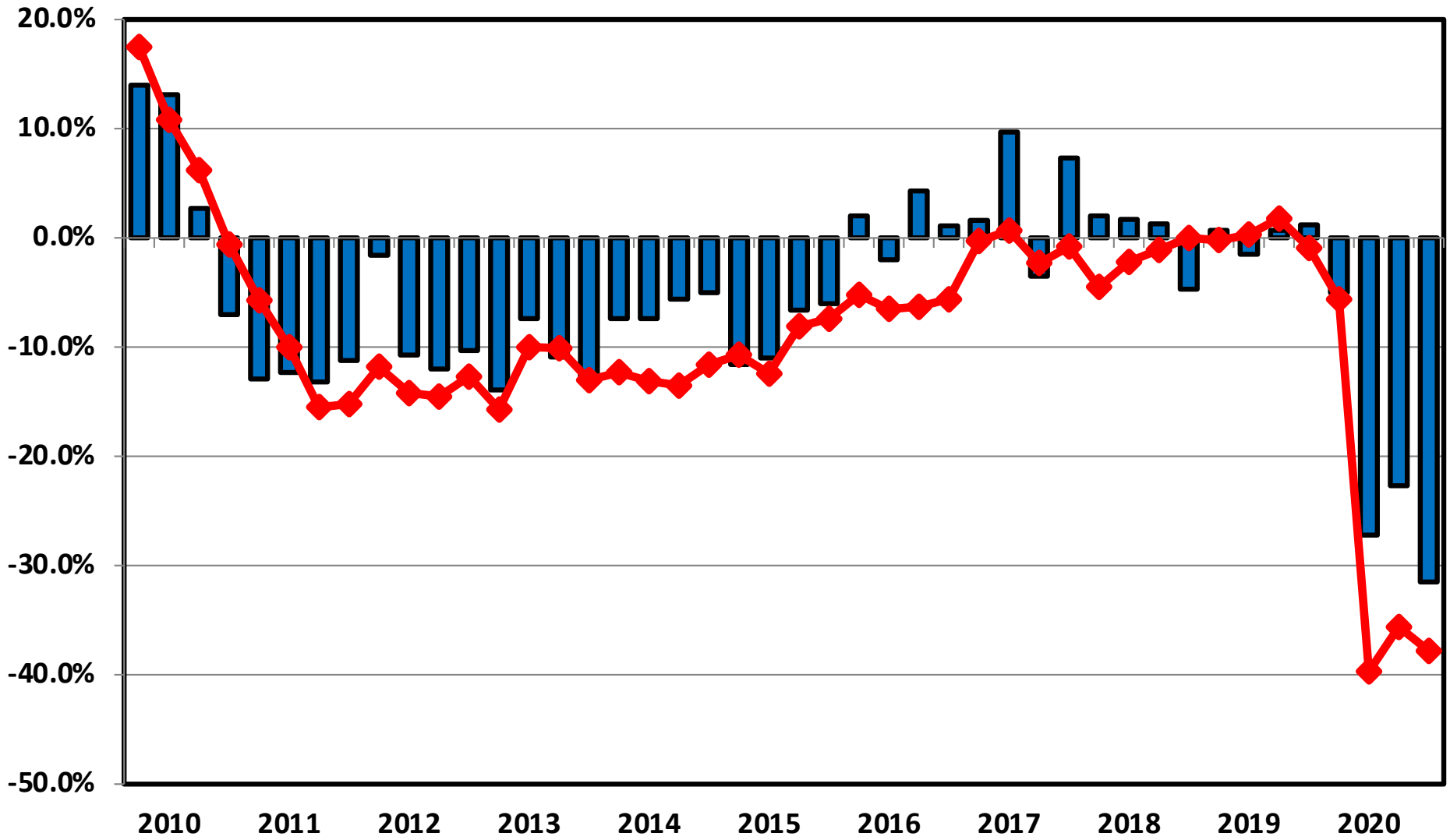
Percent Change in Total Filings Calendar Year 2020 Compared to 2010

(National Average = 65.8% Decrease)

Amount of Decrease



**Filing Trends By Quarter Oklahoma vs. National Average
(Percent Change From Same Quarter One Year Prior)**



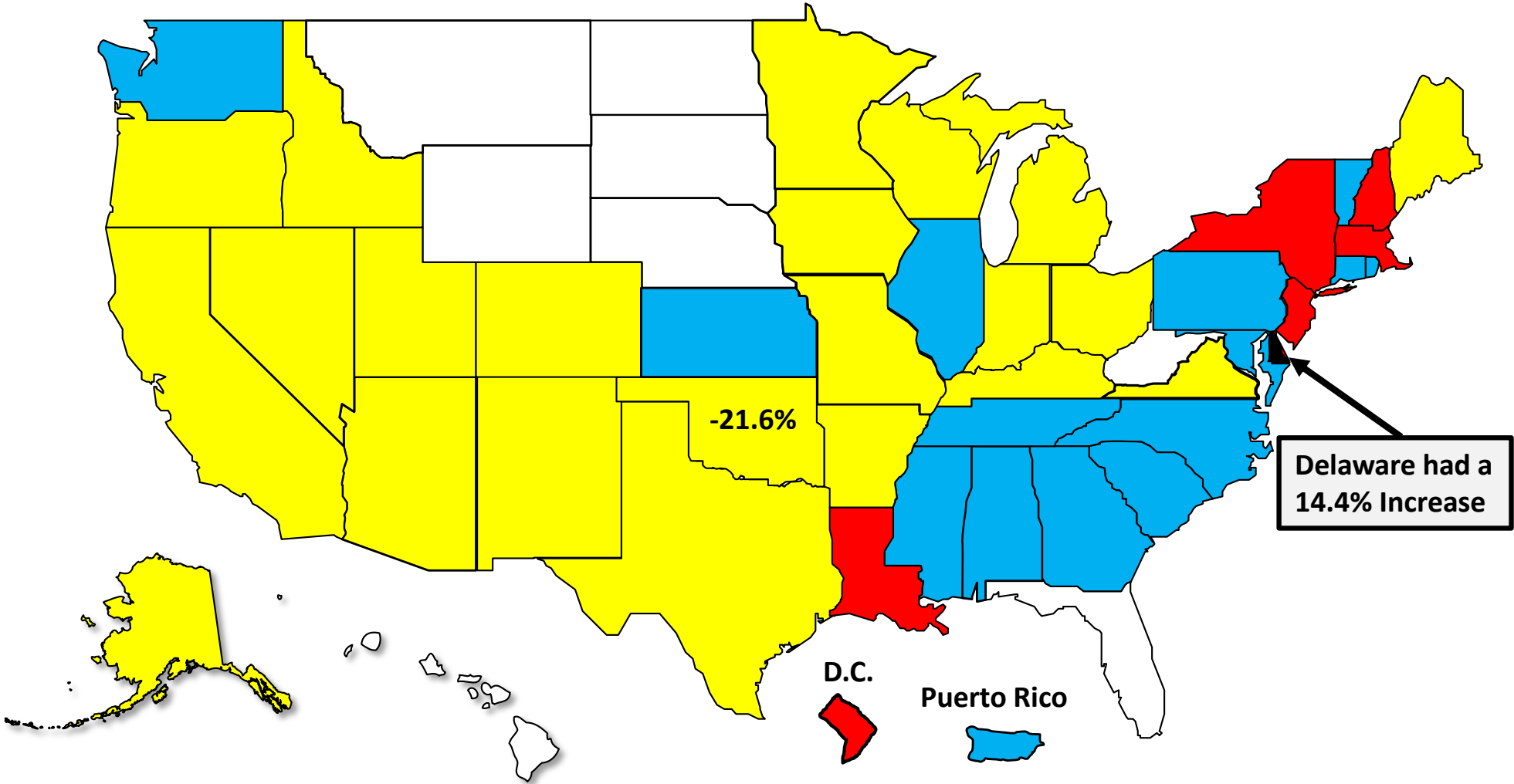
■ Oklahoma ◆ National

Bankruptcy Filing Trends

Calendar Year 2020 vs. 2019

National Average = 29.7 % Decrease

- Decline Under 20%
- Decline 20% – 30%
- Decline 30% - 40%
- Decline Over 40%





AMERICAN
BANKRUPTCY
INSTITUTE

www.abi.org