

Bankruptcy Filing Trends in Oregon



Prepared by: **The American Bankruptcy Institute**

<http://www.abi.org/>



AMERICAN
BANKRUPTCY
INSTITUTE

Updated
February 2021

Oregon



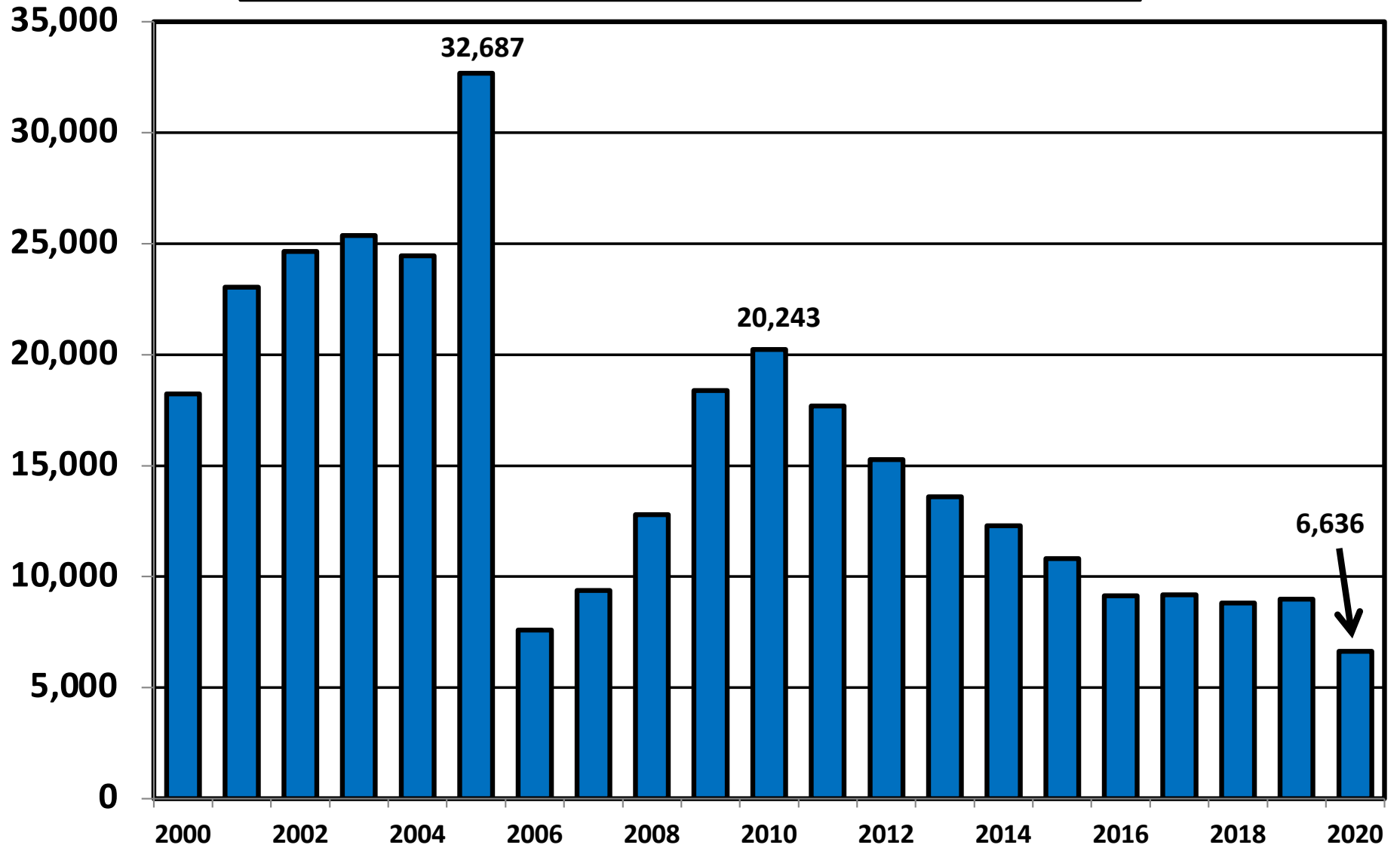
State at a Glance		
	Oregon	National
Population (7/1/2019)	4,217,737	328,239,523
- Change since 2010	10.1%	6.3%
- Foreign Born	9.9%	13.6%
Size (Square Miles)	95,988	3,531,905
Median Household Income	\$62,818	\$62,843
Persons per Household	2.51	2.62
Per Capita Income	\$33,763	\$34,103
Median Home Value	\$312,200	\$217,500
Homeownership Rate	62.4%	64.0%
High School Graduate (or Higher)	90.7%	88.0%
College Graduate (or Higher)	33.7%	32.1%
Disabled	9.9%	8.6%
No Health Insurance	8.6%	9.5%
In Poverty	11.4%	10.5%
Source: U.S. Census Bureau January 2021		

**Bankruptcy Filings in Oregon
Calendar Years 2000 - 2020**

Year	Total	Chapter 7	Chapter 11	Chapter 13	Other Cases
2000	18,227	15,138	35	3,048	6
2001	23,038	19,769	48	3,209	12
2002	24,649	21,088	59	3,489	13
2003	25,370	21,541	41	3,774	14
2004	24,455	20,449	51	3,952	3
2005	32,687	28,472	17	4,188	10
2006	7,585	5,699	19	1,860	7
2007	9,386	6,838	24	2,522	2
2008	12,802	9,551	64	3,184	3
2009	18,380	14,331	59	3,981	9
2010	20,243	15,798	65	4,363	17
2011	17,681	13,886	58	3,724	13
2012	15,281	11,937	56	3,277	11
2013	13,610	11,045	43	2,514	8
2014	12,305	10,031	31	2,241	2
2015	10,809	8,698	23	2,086	2
2016	9,131	7,116	28	1,980	7
2017	9,191	7,068	24	2,092	7
2018	8,815	6,642	27	2,144	2
2019	8,996	6,736	31	2,223	6
2020	6,636	5,298	24	1,295	19

District of Oregon

Total Bankruptcy Cases Filed 2000 - 2020



Total Filings Relative to Population 2000 - 2020



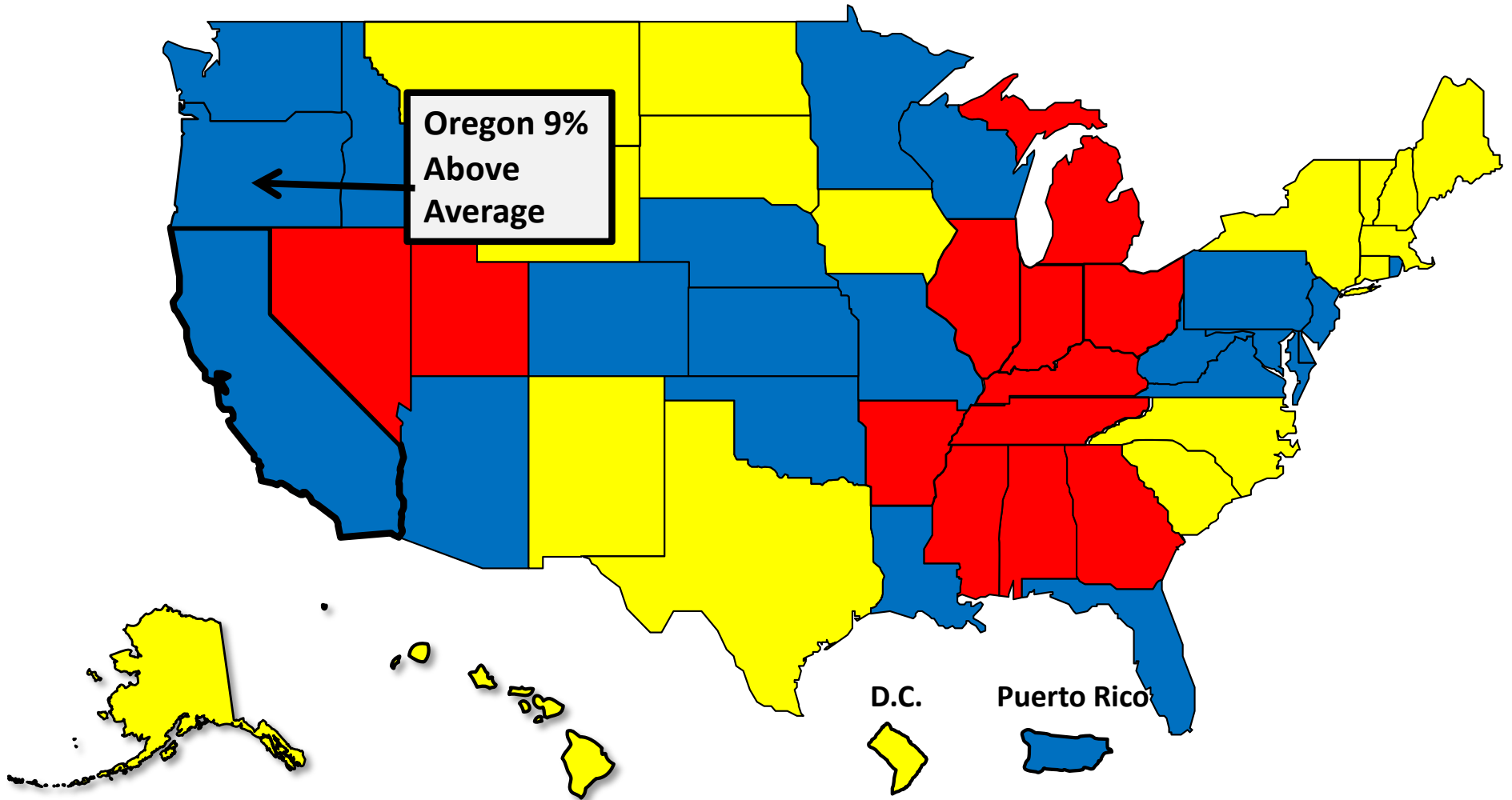
More than 25%
Above Average



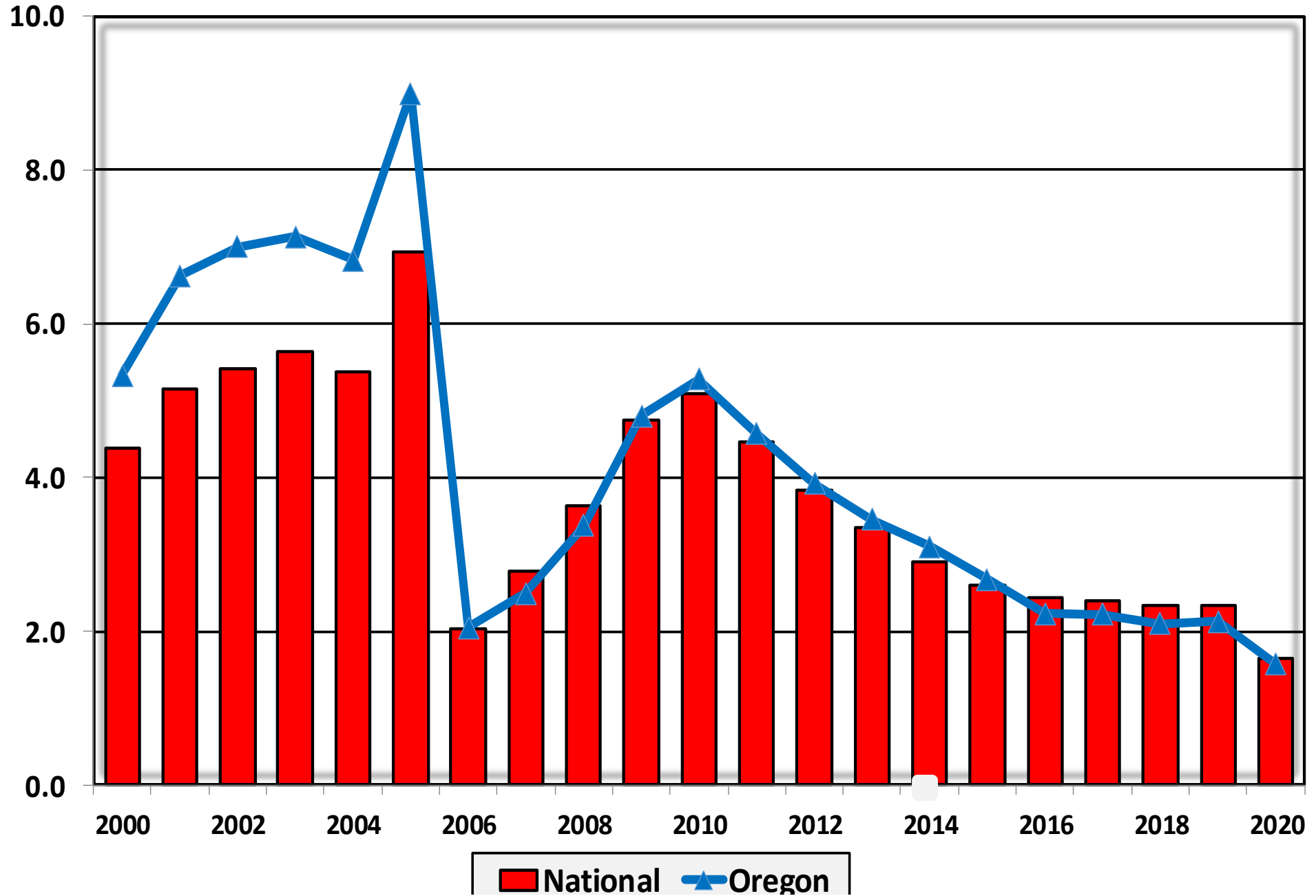
Within 25%
of Average



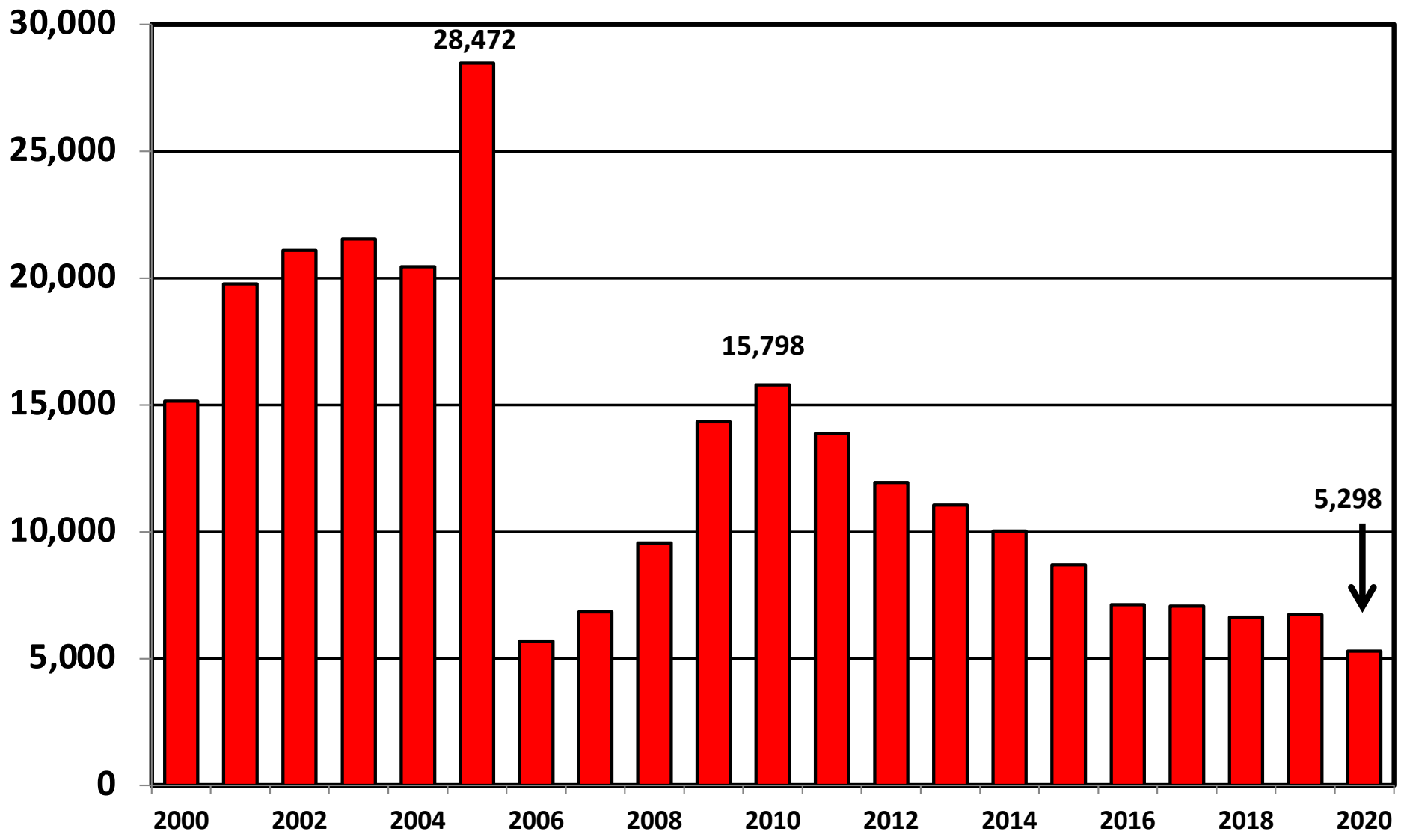
More than 25%
Below Average



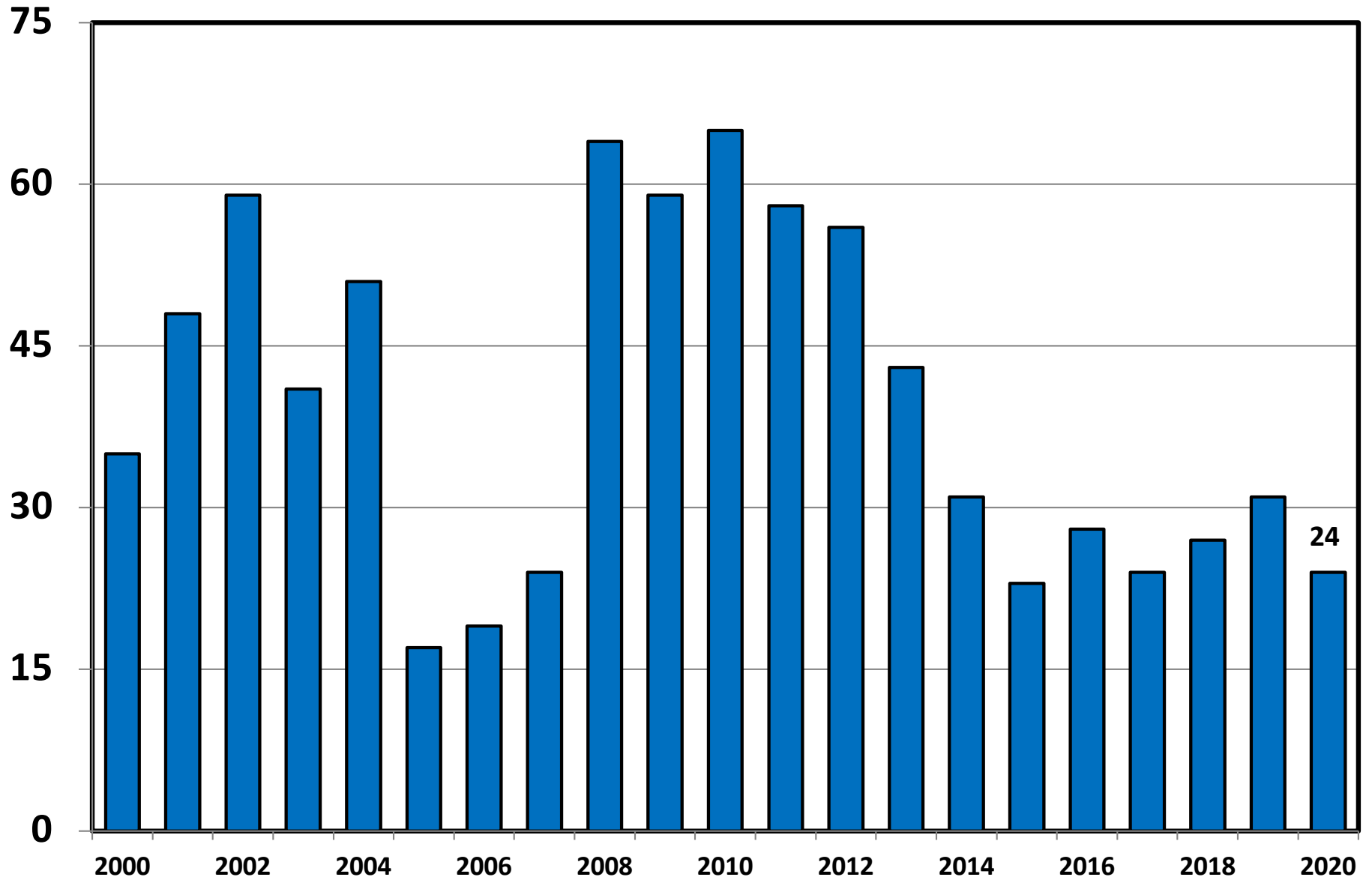
**Bankruptcy Filings per 1,000 Population
Oregon vs. National Average 2000 - 2020**



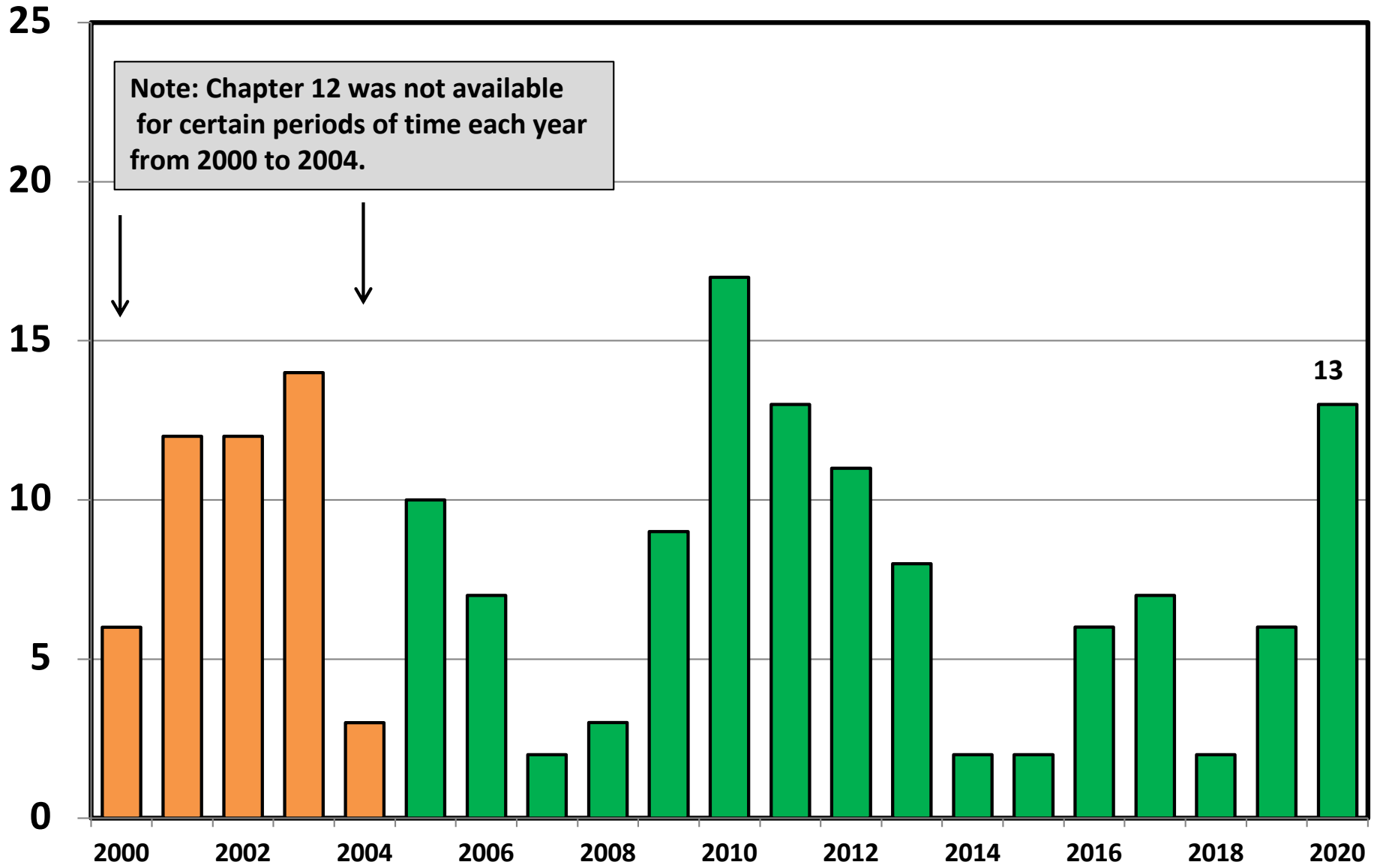
District of Oregon Chapter 7 Cases Filed 2000 - 2020



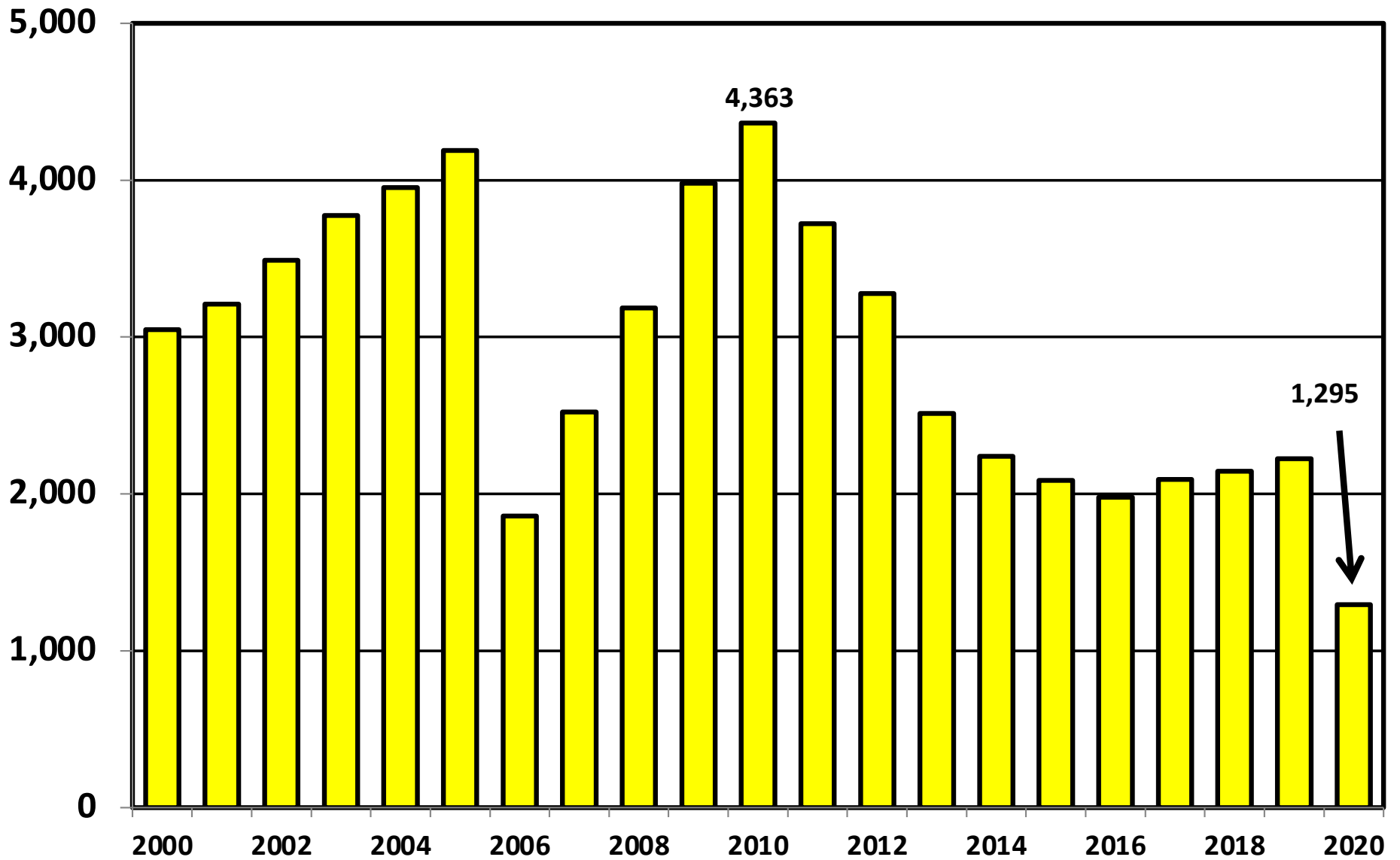
Chapter 11 Cases Filed in Oregon 2000 - 2020



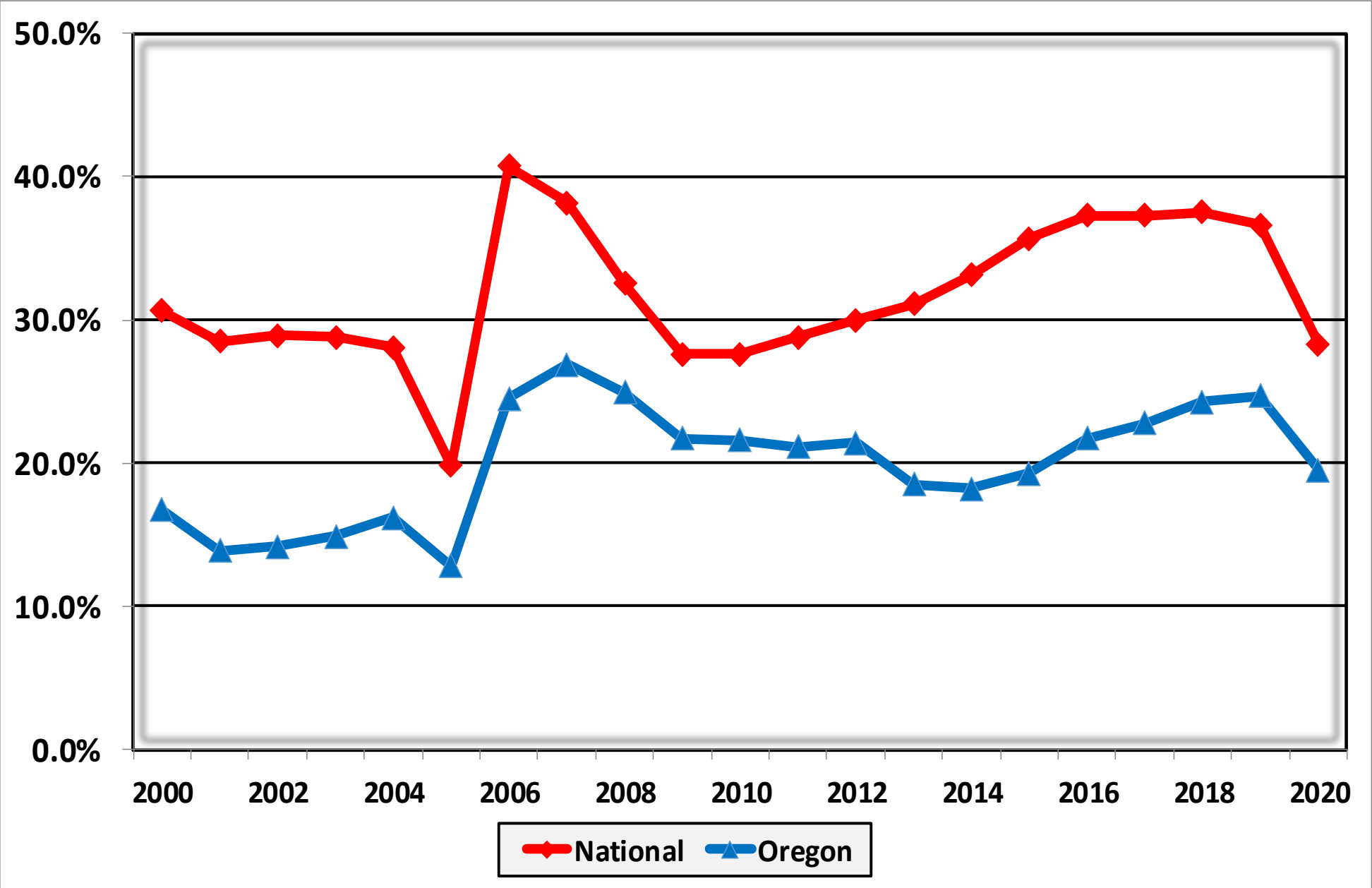
Chapter 12 Cases Filed in Oregon 2000 - 2020



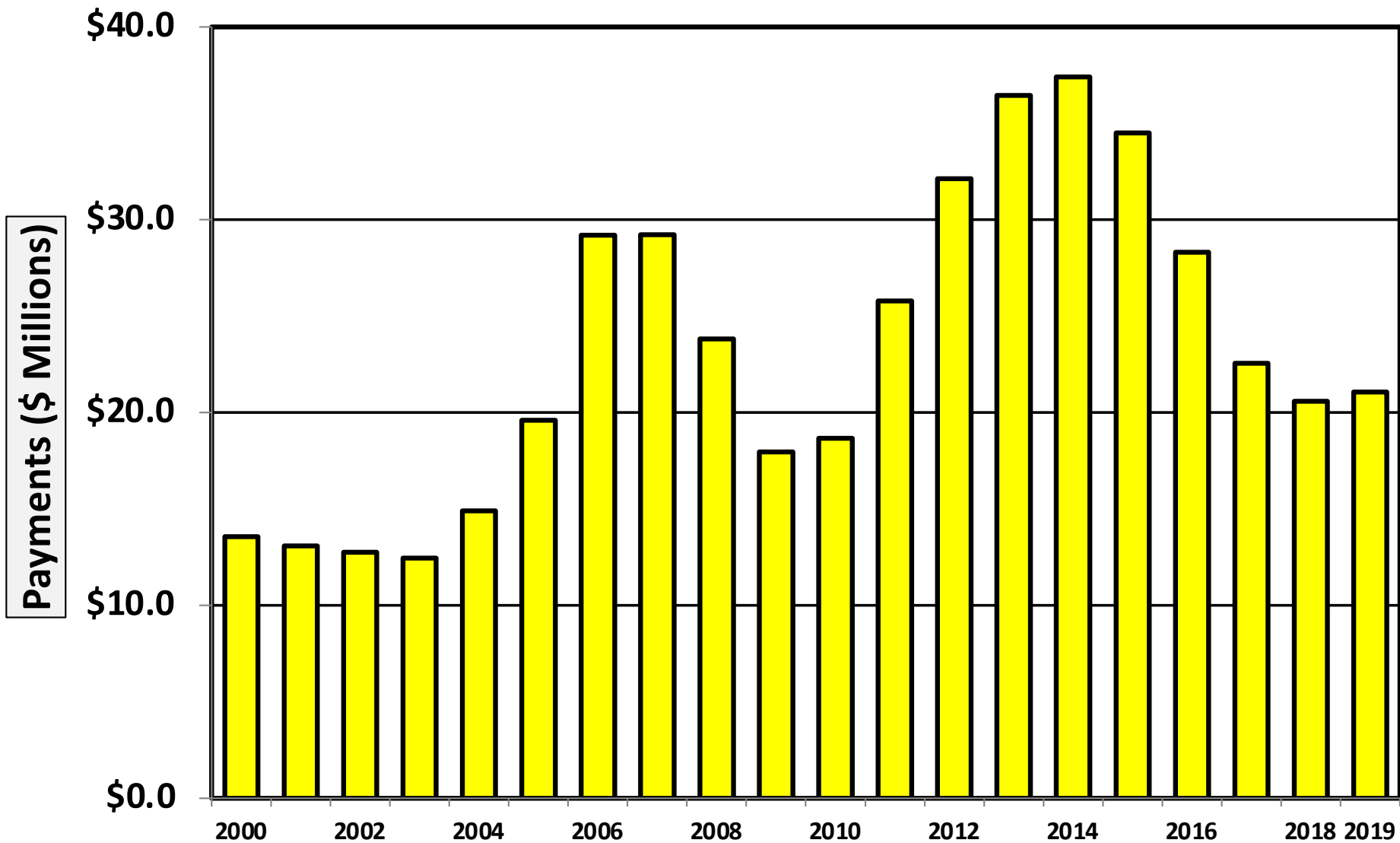
District of Oregon Chapter 13 Cases Filed 2000 - 2020



**Percent of Cases Filed as Chapter 13
Calendar Years 2000 - 2020**

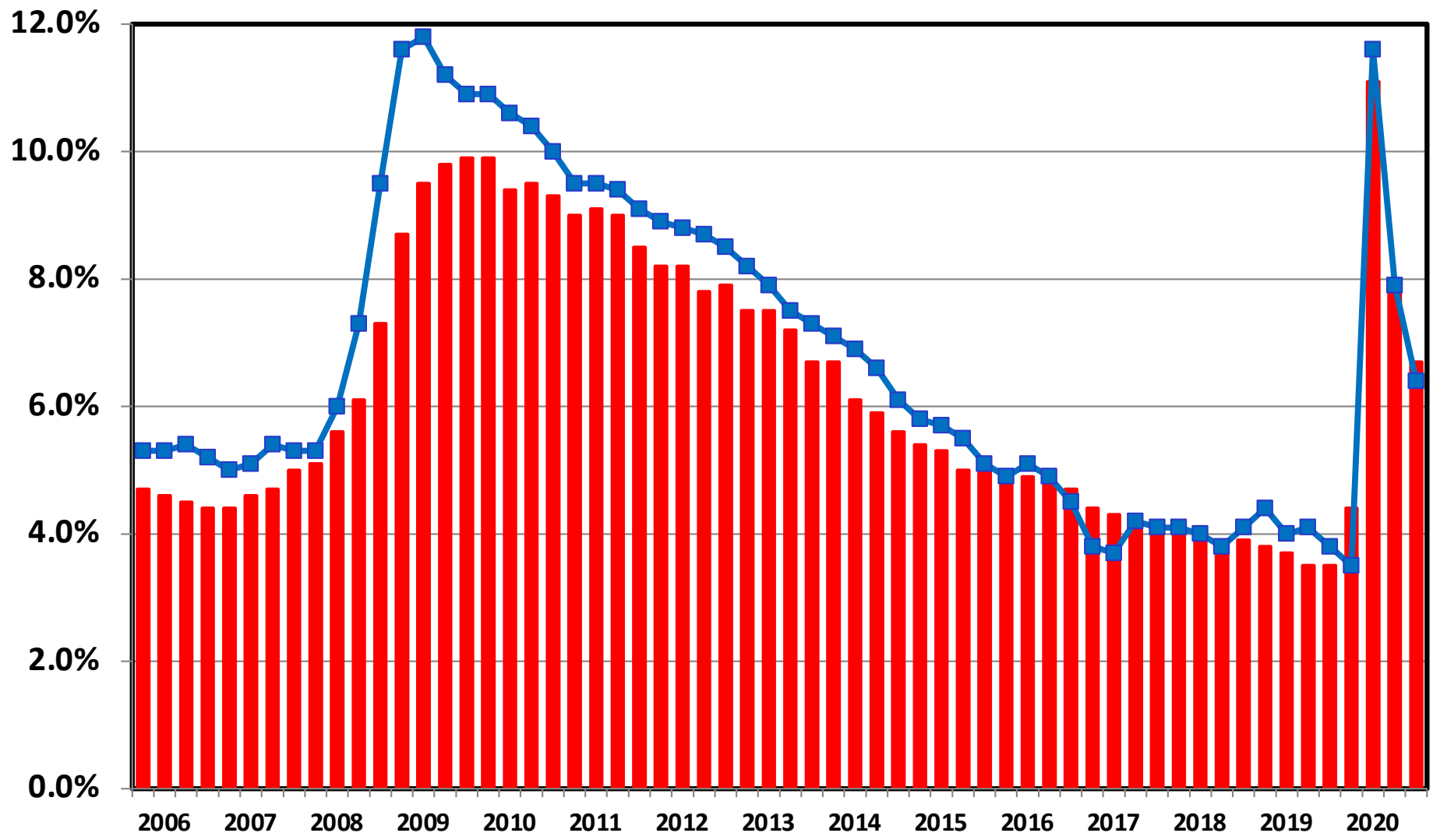


Chapter 13 Cases in Oregon
Amount (in Millions) Paid to Unsecured Creditors
Fiscal Years 2000 - 2019



Source: Executive Office for United States Trustees

Unemployment Rate By Quarter 2006 - 2020



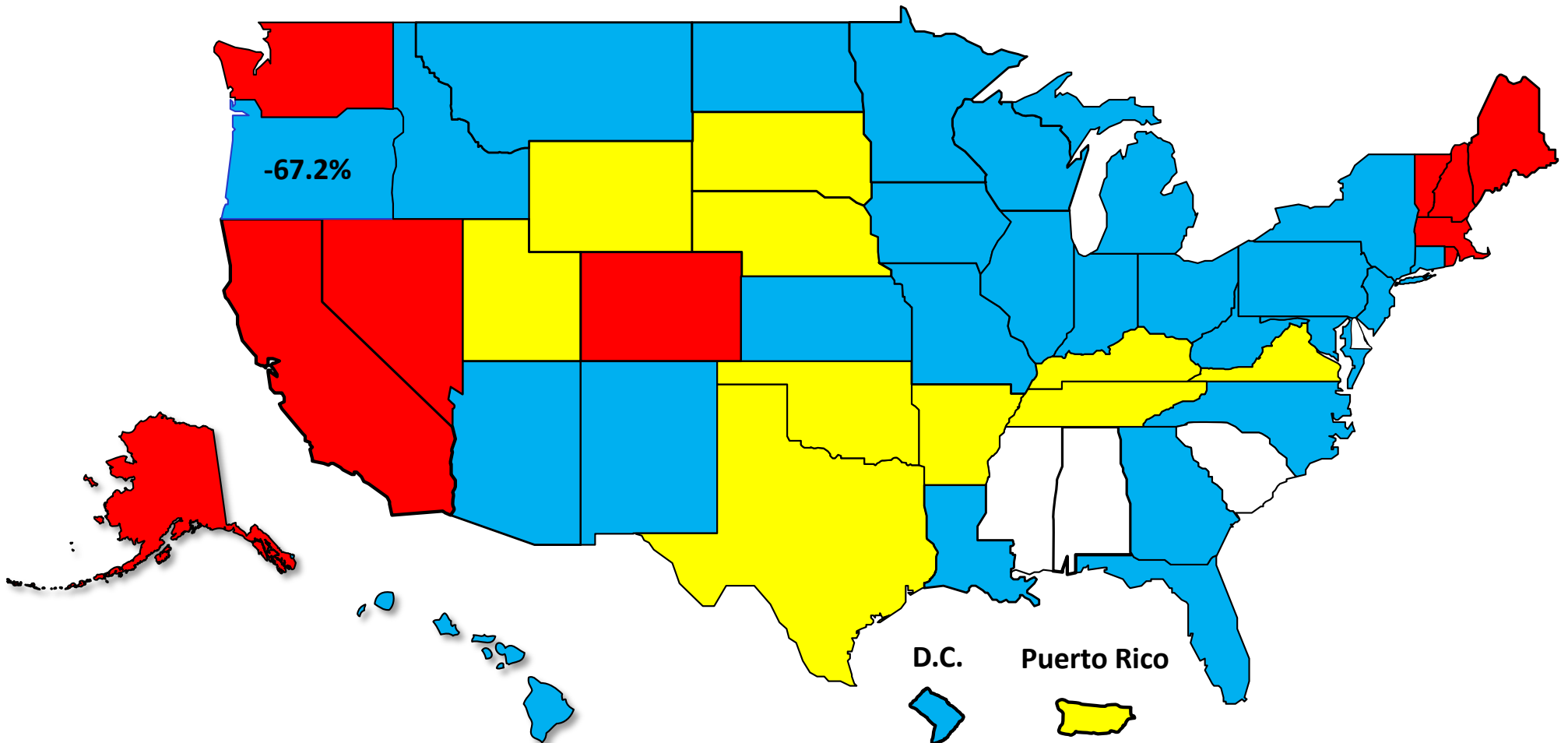
■ National ■ Oregon

Source: Bureau of Labor Statistics

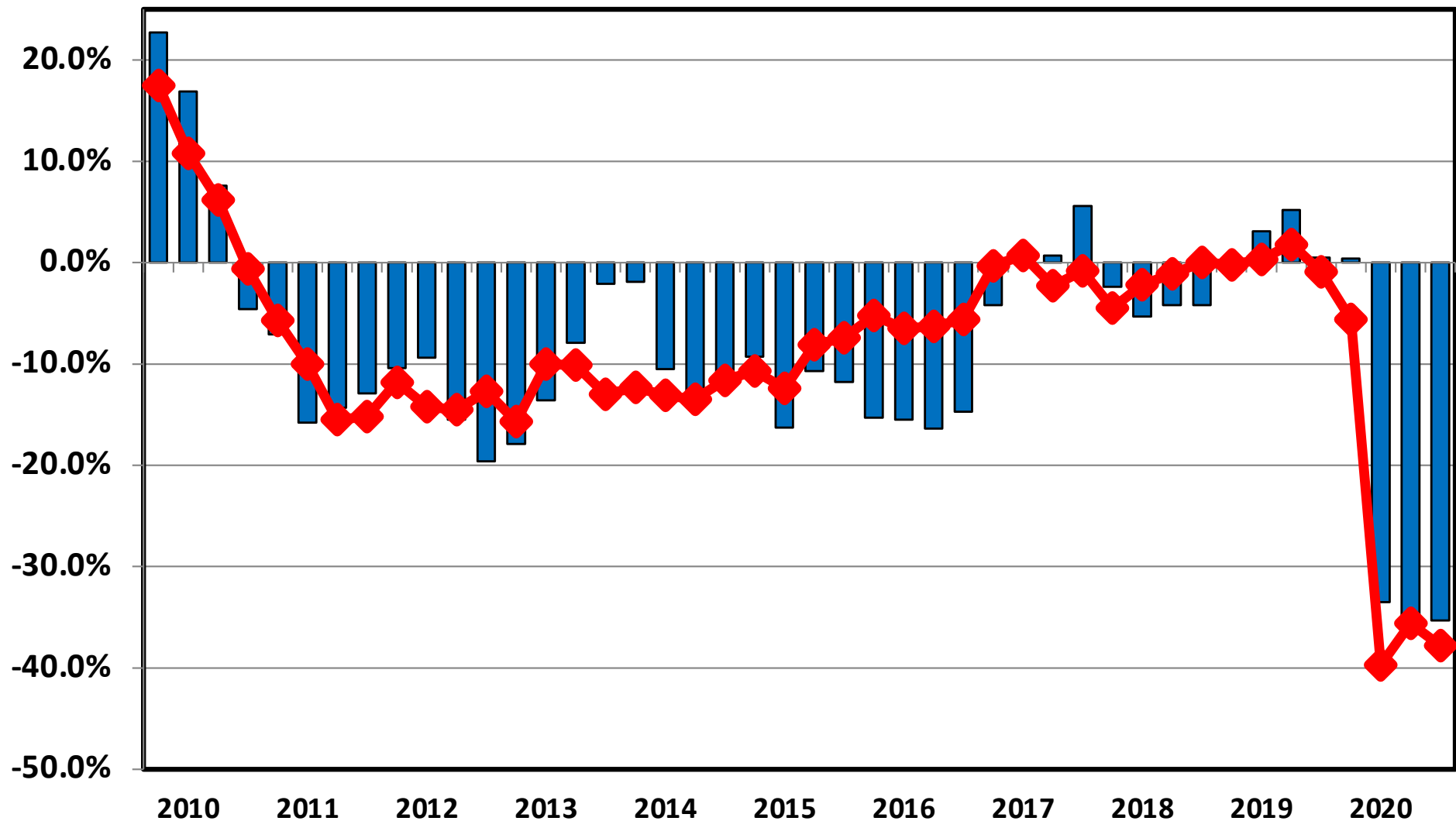
Percent Change in Total Filings Calendar Year 2020 Compared to 2010

(National Average = 65.8% Decrease)

Amount of Decrease



Filing Trends By Quarter Oregon vs. National Average (Percent Change From Same Quarter One Year Prior)



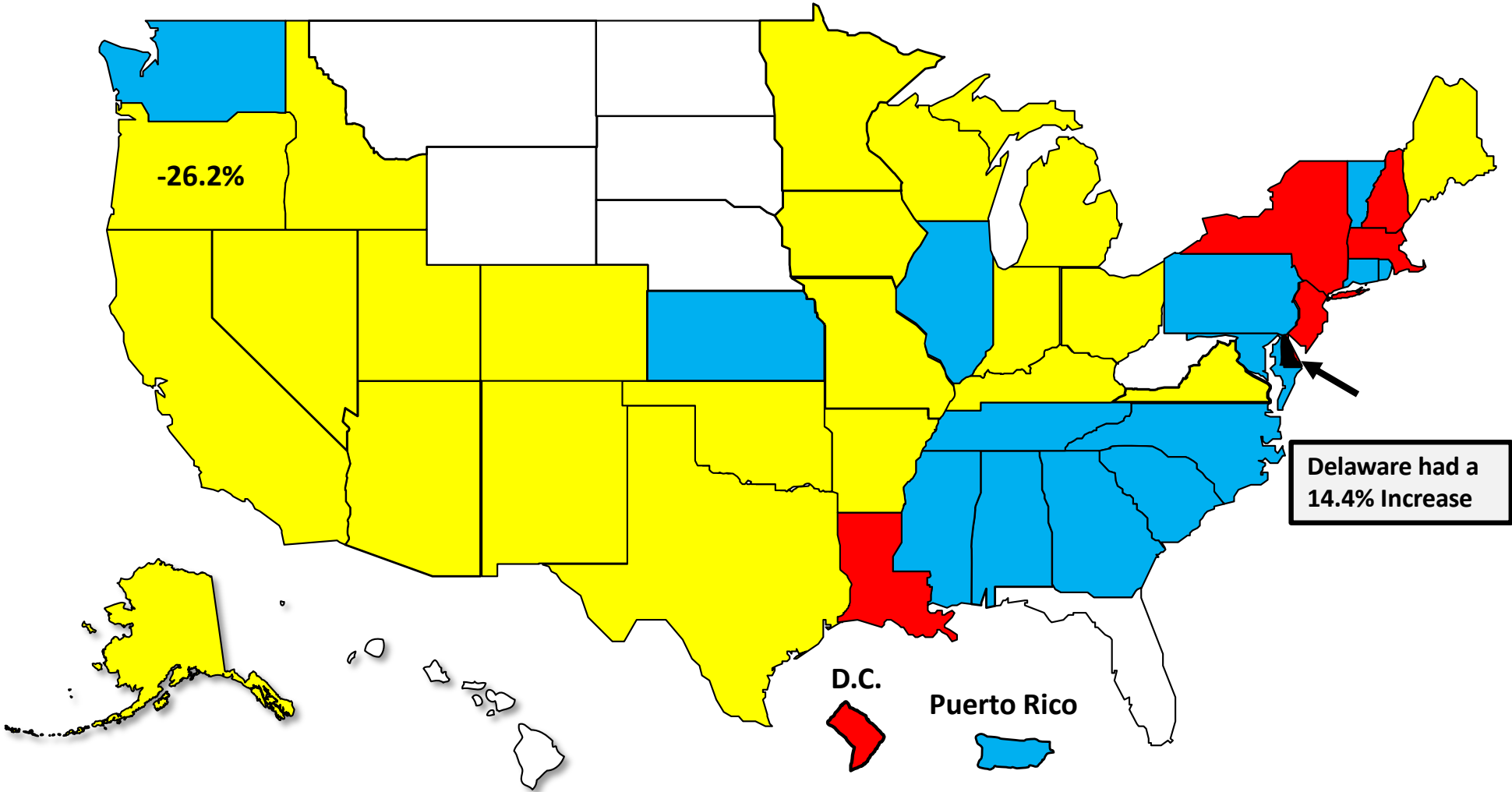
■ Oregon ◆ National

Bankruptcy Filing Trends

Calendar Year 2020 vs. 2019

National Average = 29.7 % Decrease

- Decline Under 20%
- Decline 20% – 30%
- Decline 30% - 40%
- Decline Over 40%





AMERICAN
BANKRUPTCY
INSTITUTE

www.abi.org