

Bankruptcy Filing Trends in Tennessee



Prepared by: **The American Bankruptcy Institute**

<http://www.abi.org/>



AMERICAN
BANKRUPTCY
INSTITUTE

Updated
February 2021

Tennessee



AMERICAN
BANKRUPTCY
INSTITUTE

State at a Glance

	Tennessee	National
Population (7/1/2019)	6,829,174	328,239,523
- Change since 2010	7.6%	6.3%
- Foreign Born	5.0%	13.6%
Size (Square Miles)	41,235	3,531,905
Median Household Income	\$53,320	\$62,843
Persons per Household	2.52	2.62
Per Capita Income	\$29,859	\$34,103
Median Home Value	\$167,200	\$217,500
Homeownership Rate	66.3%	64.0%
High School Graduate (or Higher)	87.5%	88.0%
College Graduate (or Higher)	27.3%	32.1%
Disabled	11.0%	8.6%
No Health Insurance	12.1%	9.5%
In Poverty	13.9%	10.5%
Source: U.S. Census Bureau January 2021		

Prepared by: The American Bankruptcy Institute

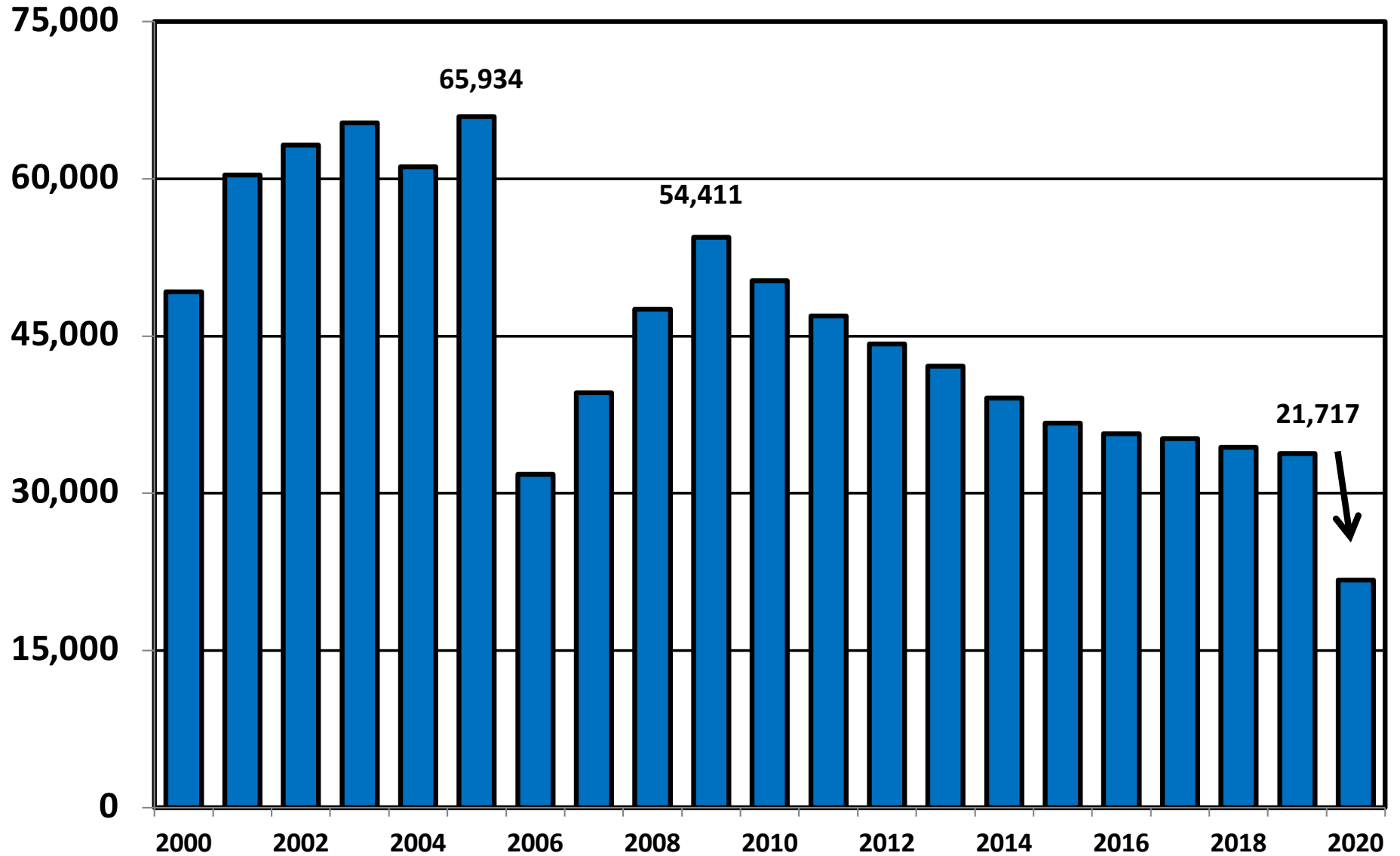
<http://www.abi.org>

**Bankruptcy Filings in Tennessee
Calendar Years 2000 - 2020**

Year	Total	Chapter 7	Chapter 11	Chapter 13	Other Cases
2000	49,236	21,586	256	27,391	3
2001	60,340	28,178	375	31,784	3
2002	63,208	30,047	357	32,798	6
2003	65,344	31,923	309	33,106	6
2004	61,122	29,588	242	31,288	4
2005	65,934	37,794	205	27,929	6
2006	31,803	10,947	162	20,681	13
2007	39,593	14,931	142	24,513	7
2008	47,567	20,917	230	26,410	10
2009	54,411	27,255	389	26,737	30
2010	50,251	25,301	329	24,605	16
2011	46,910	22,370	233	24,290	17
2012	44,226	20,263	217	23,730	16
2013	42,137	18,582	216	23,330	9
2014	39,075	16,459	163	22,448	5
2015	36,669	14,724	137	21,798	10
2016	35,658	14,286	159	21,209	4
2017	35,193	14,353	138	20,690	12
2018	34,381	14,305	111	19,955	10
2019	33,766	14,446	111	19,201	8
2020	21,717	11,110	102	10,498	7

Total Bankruptcy Cases Filed in Tennessee

Calendar Years 2000 - 2020



Total Filings Relative to Population 2000 - 2020



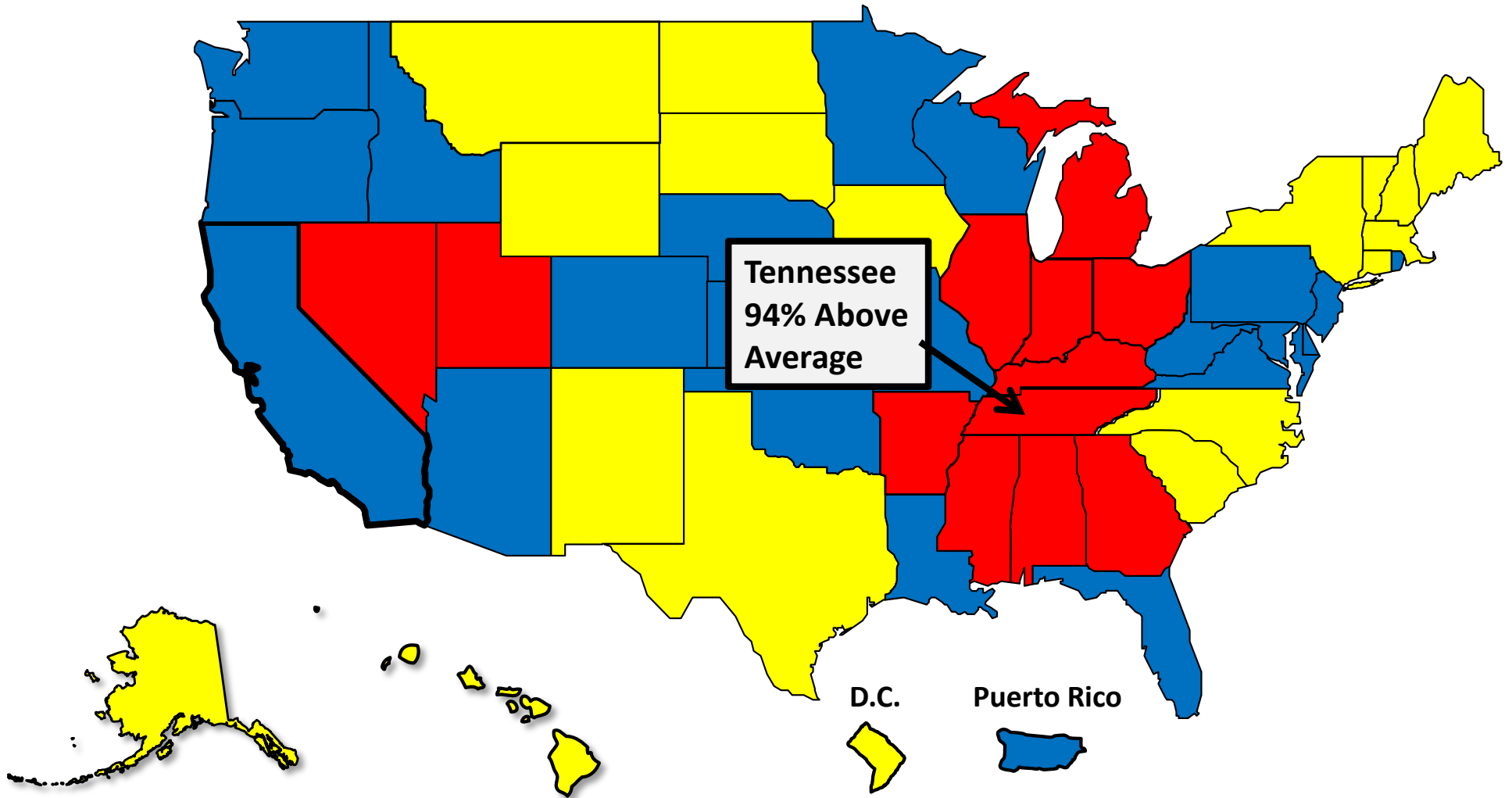
More than 25%
Above Average



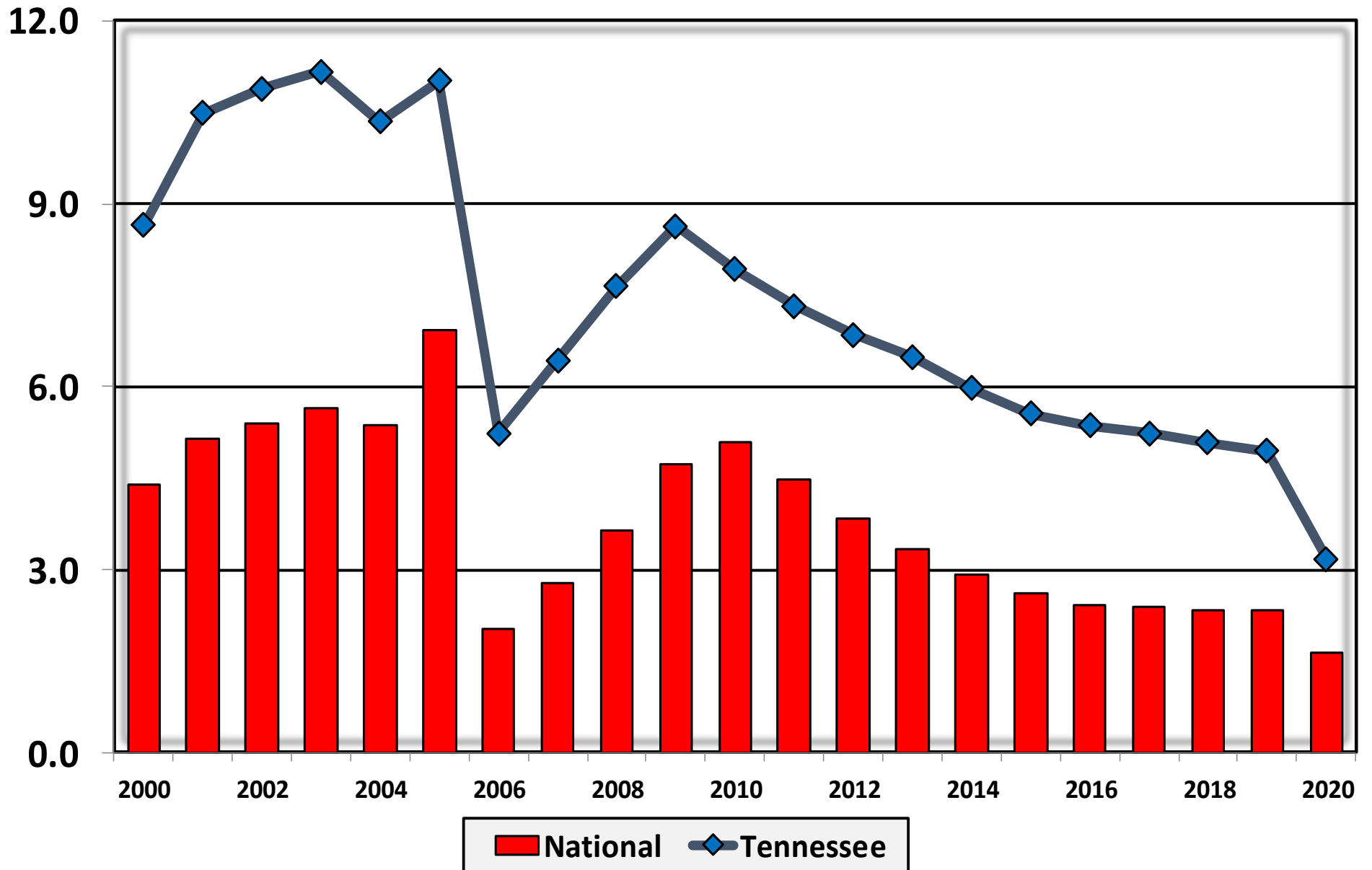
Within 25%
of Average



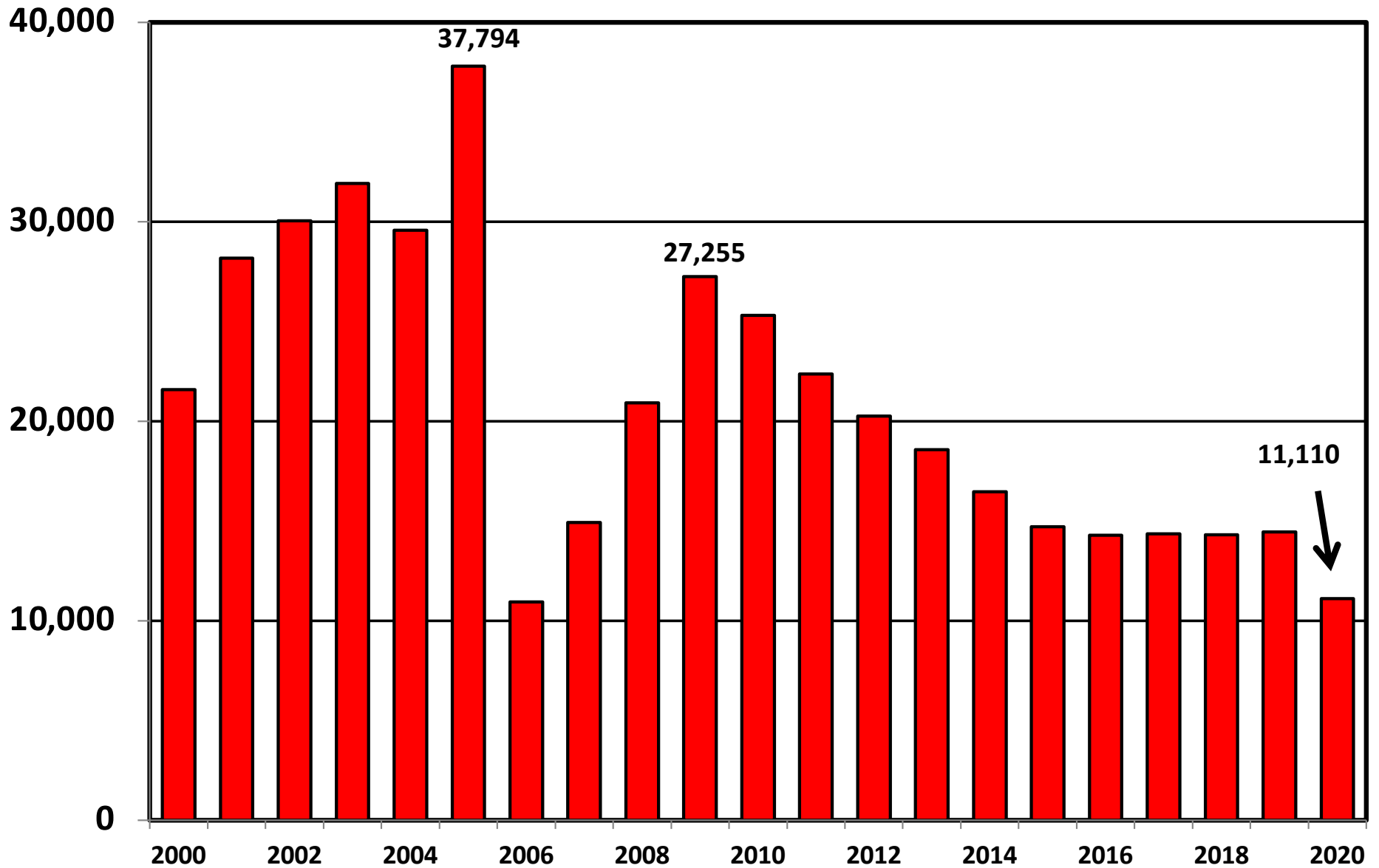
More than 25%
Below Average



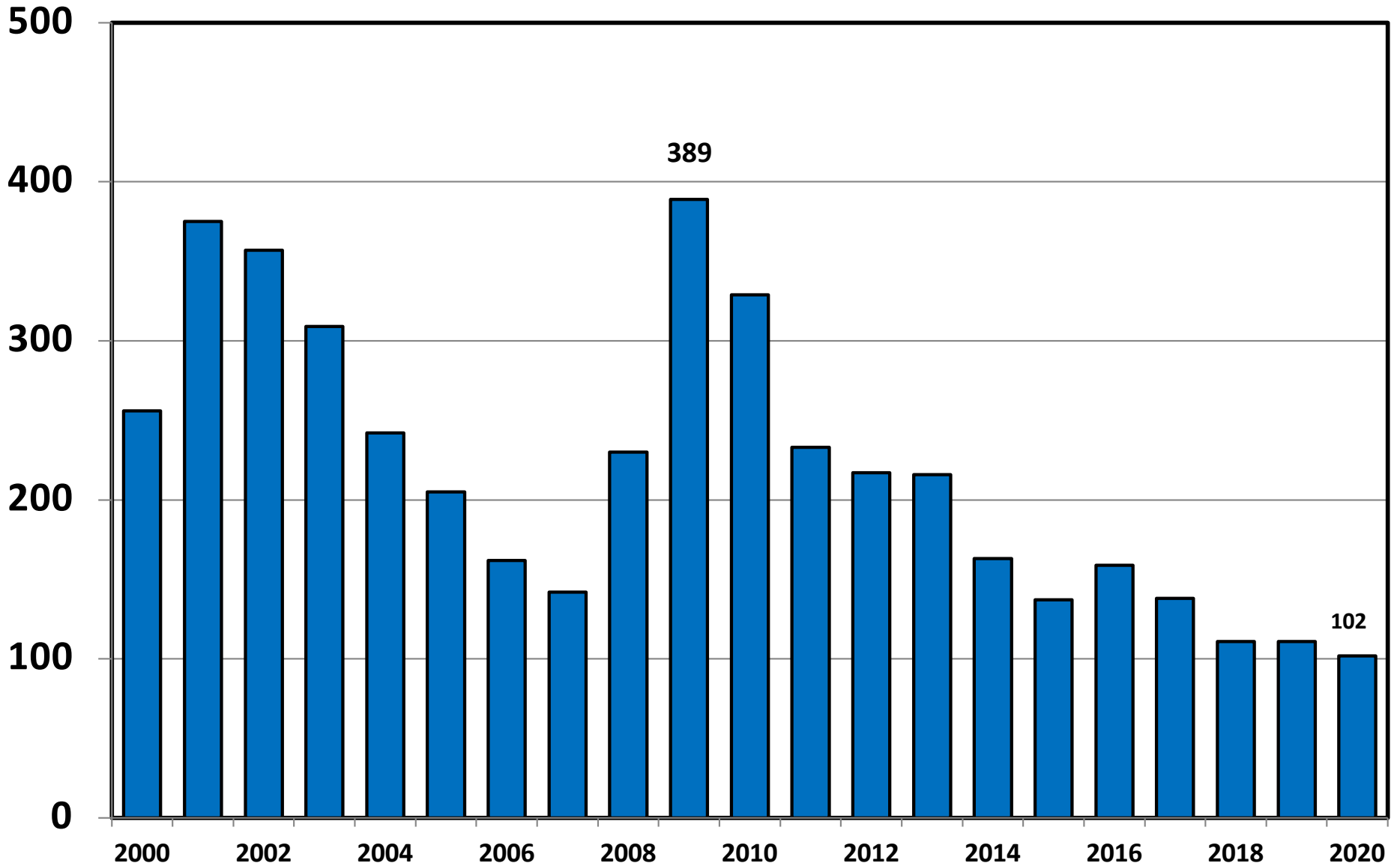
Bankruptcy Filings per 1,000 Population Tennessee vs. National Average 2000 - 2020



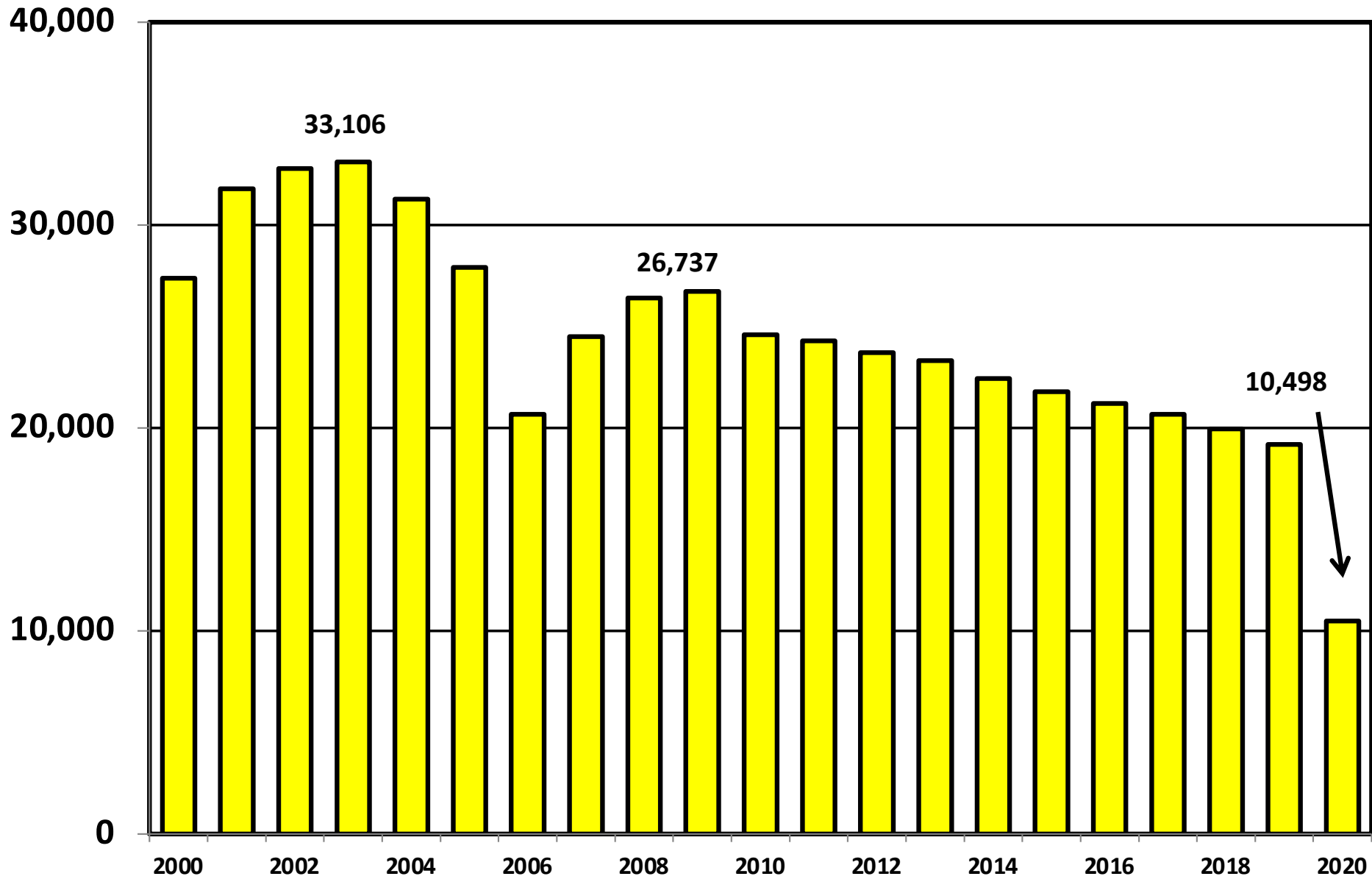
Chapter 7 Cases Filed In Tennessee Calendar Years 2000 - 2020



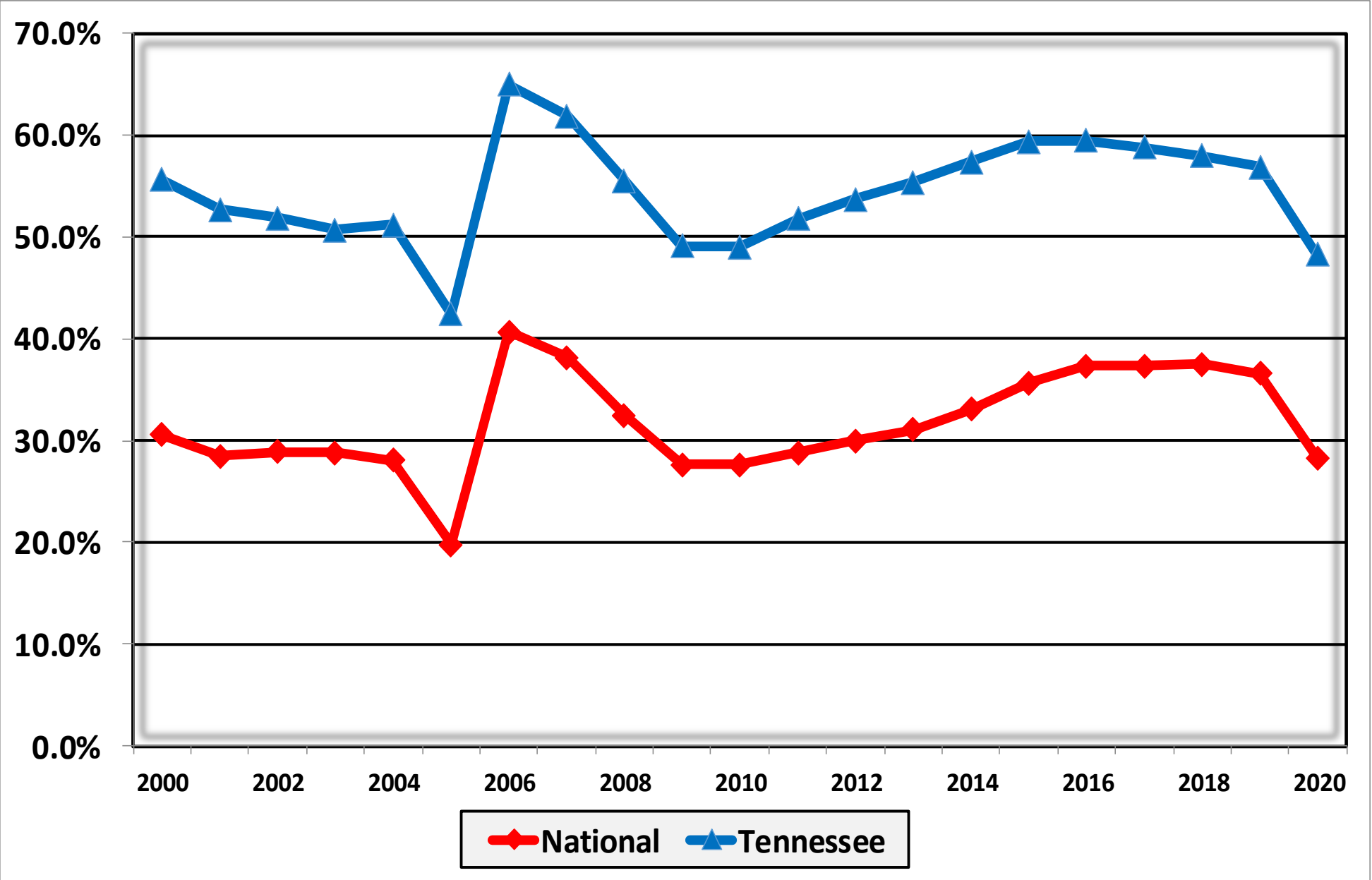
Chapter 11 Cases Filed in Tennessee 2000 - 2020



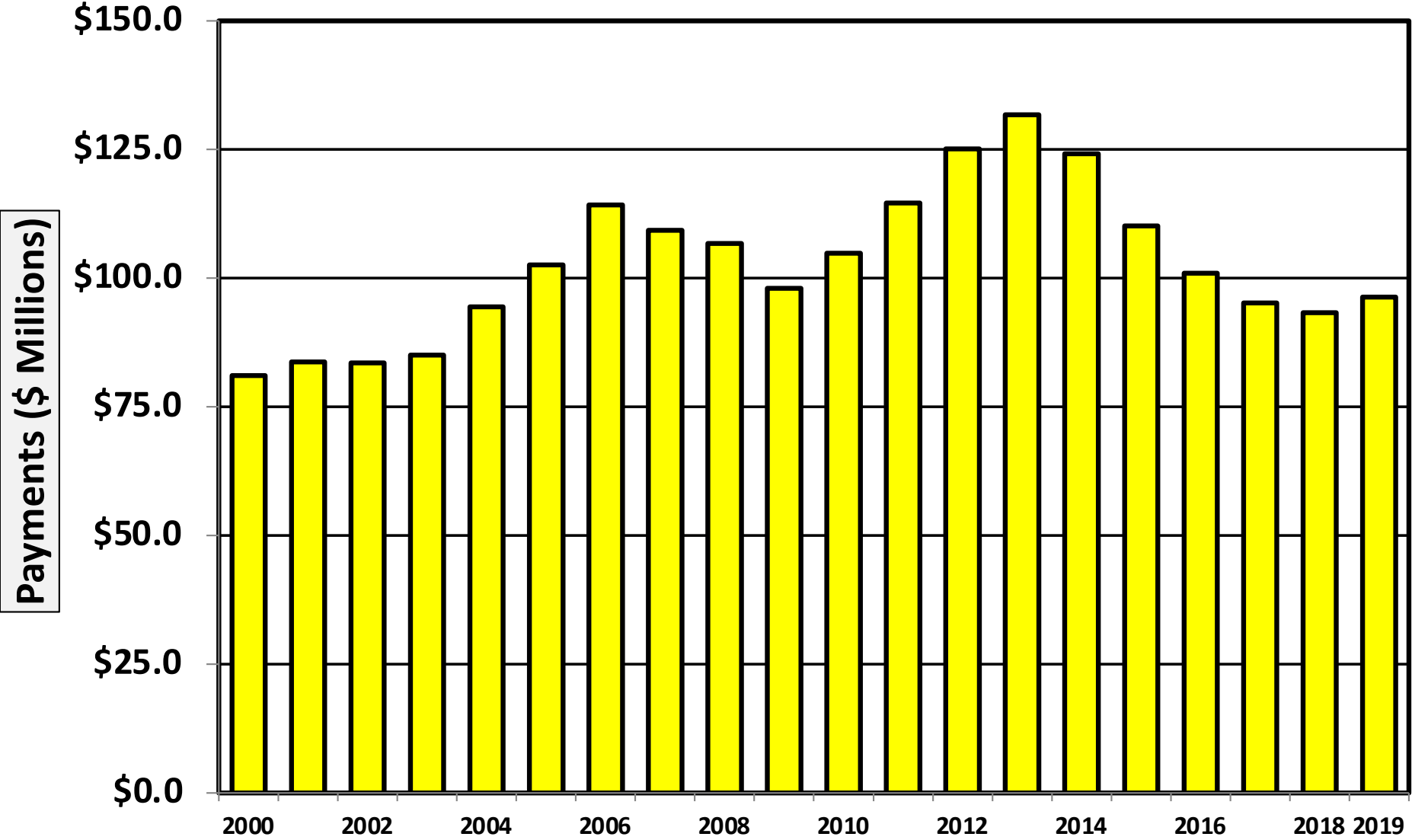
Chapter 13 Cases Filed in Tennessee 2000 - 2020



**Percent of Cases Filed as Chapter 13
Calendar Years 2000 - 2020**

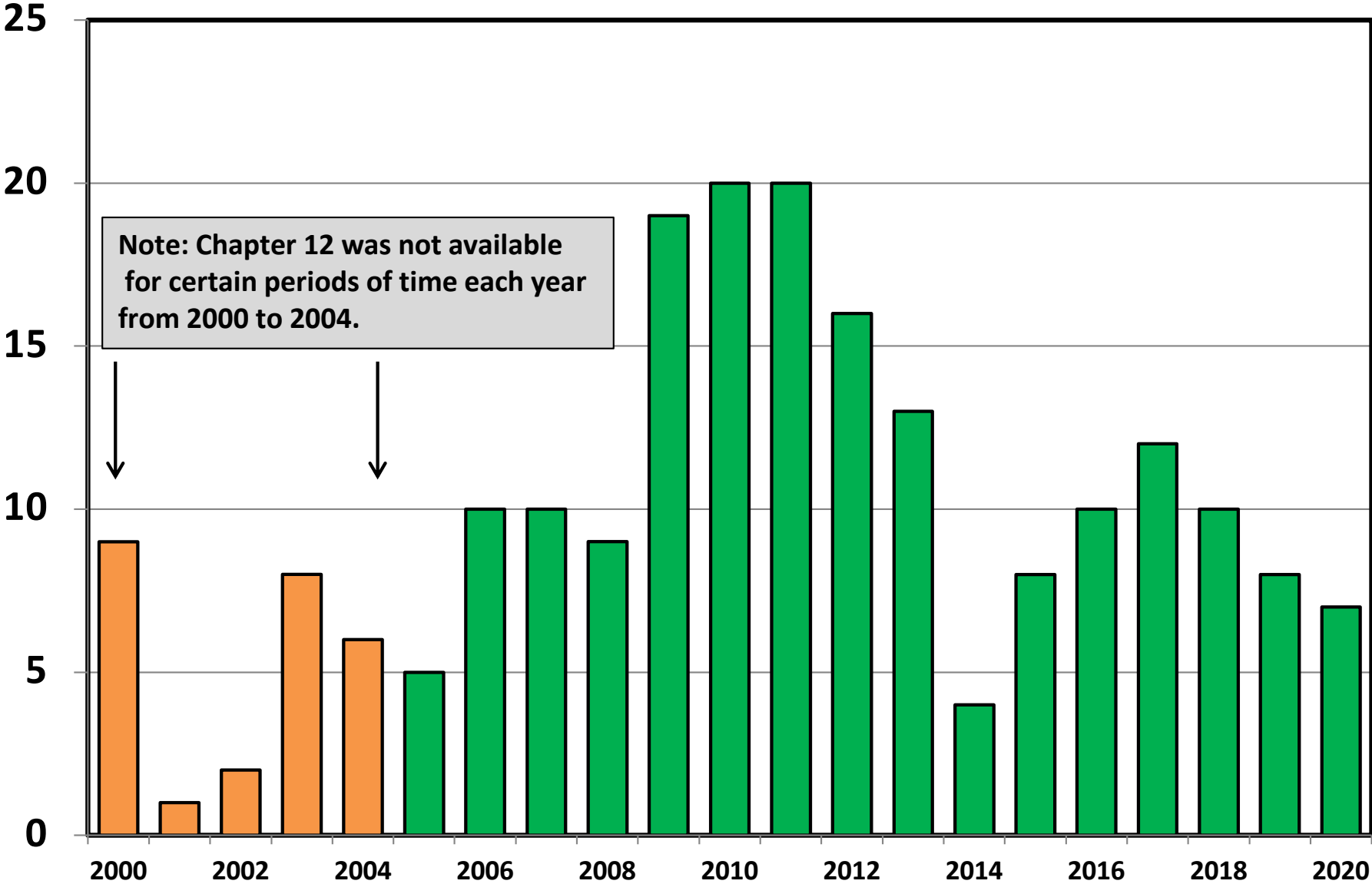


Chapter 13 Cases in Tennessee
Amount (in Millions) Paid to Unsecured Creditors
Fiscal Years 2000 - 2019

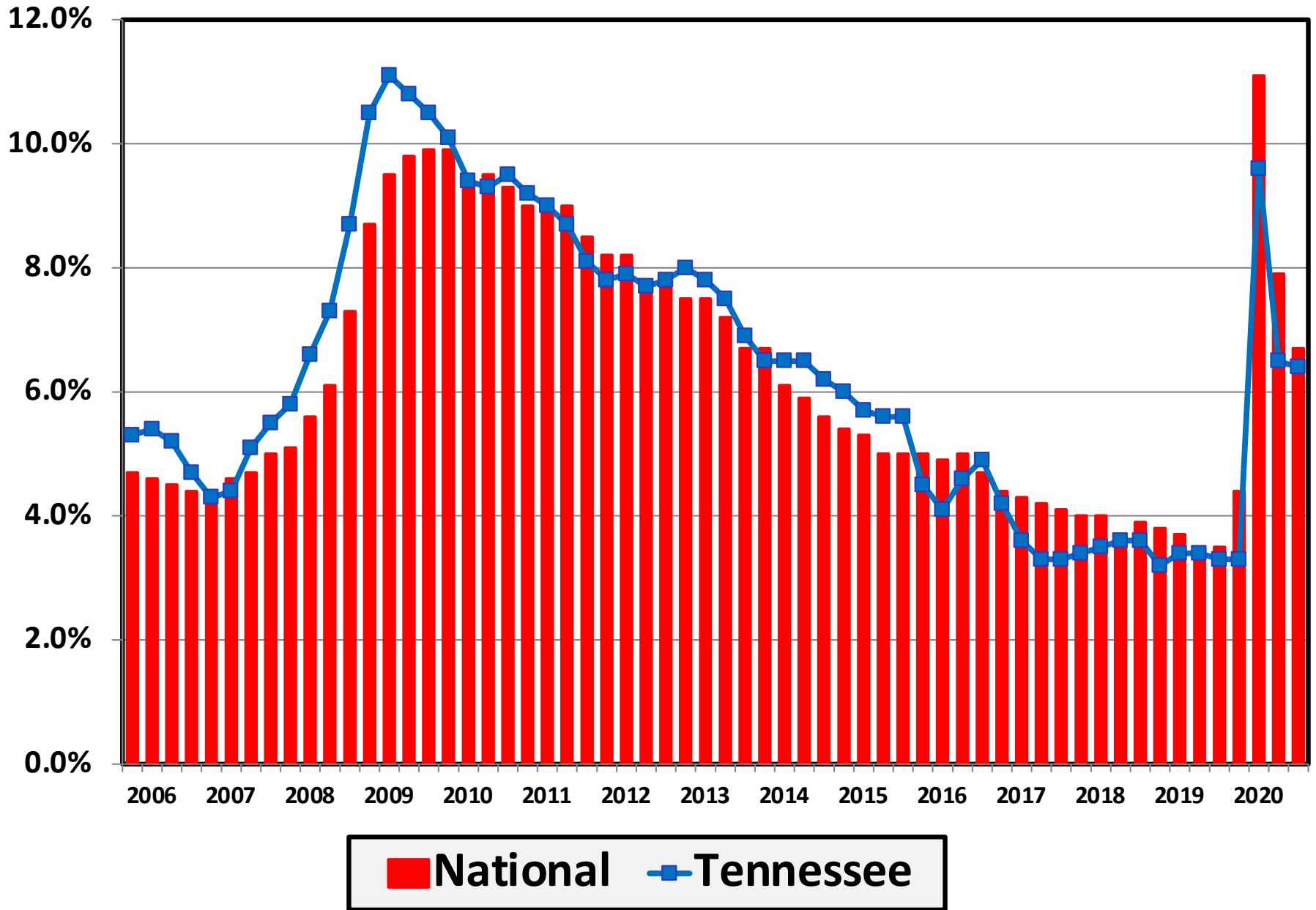


Source: Executive Office for United States Trustees

Chapter 12 Cases Filed in Tennessee 2000 - 2020



Unemployment Rate By Quarter 2006 - 2020

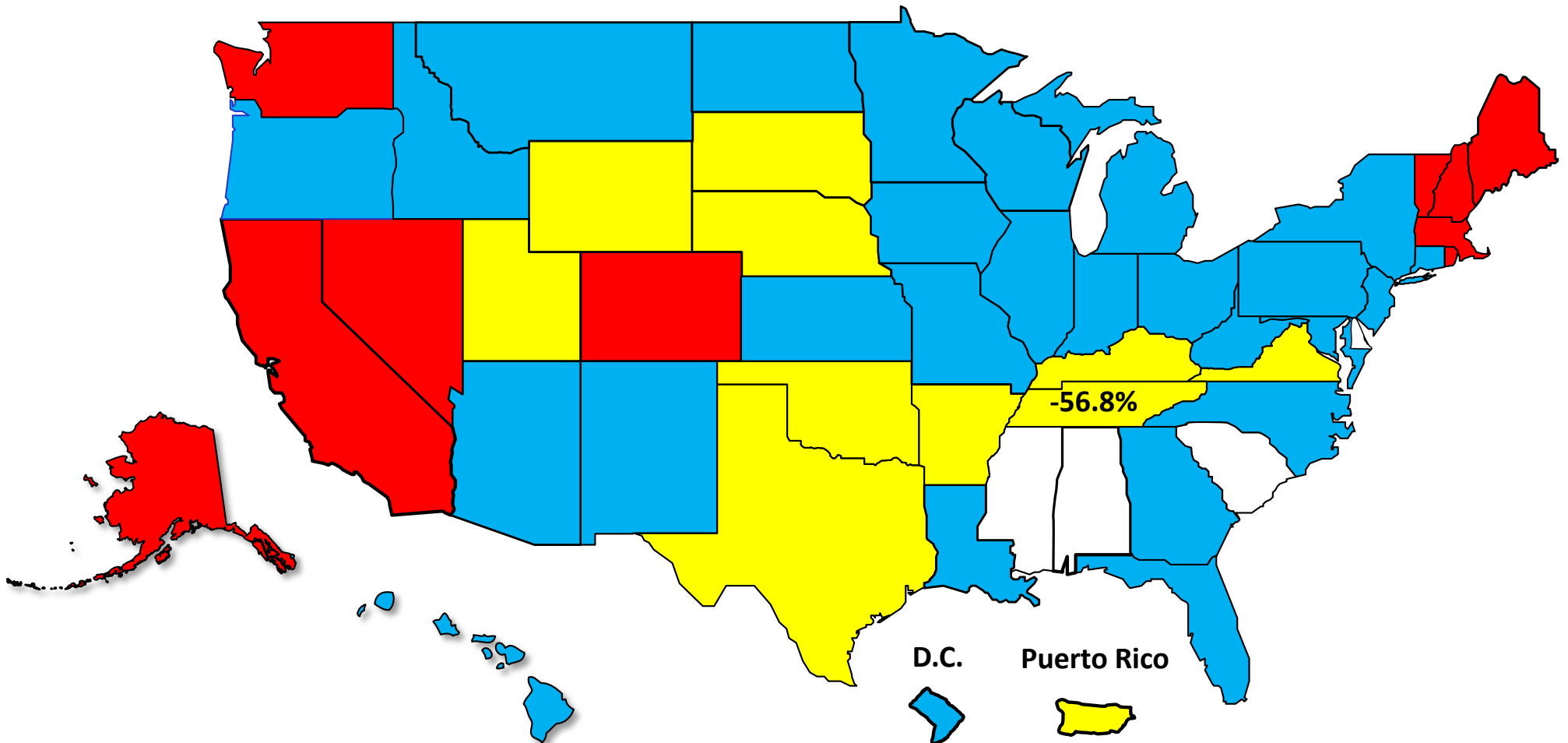


Source: Bureau of Labor Statistics

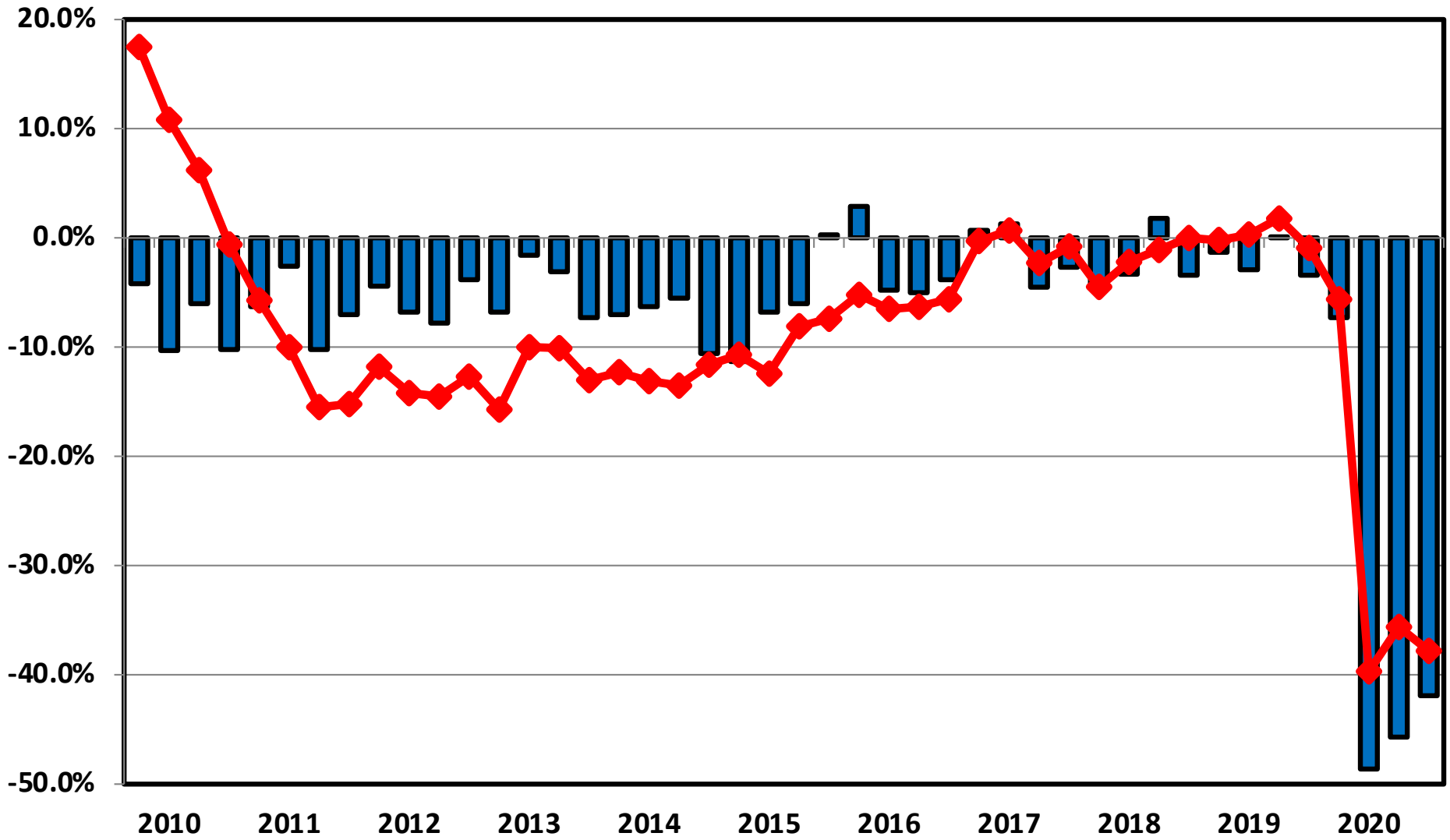
Percent Change in Total Filings Calendar Year 2020 Compared to 2010

(National Average = 65.8% Decrease)

Amount of Decrease



**Filing Trends By Quarter Tennessee vs. National Average
(Percent Change From Same Quarter One Year Prior)**



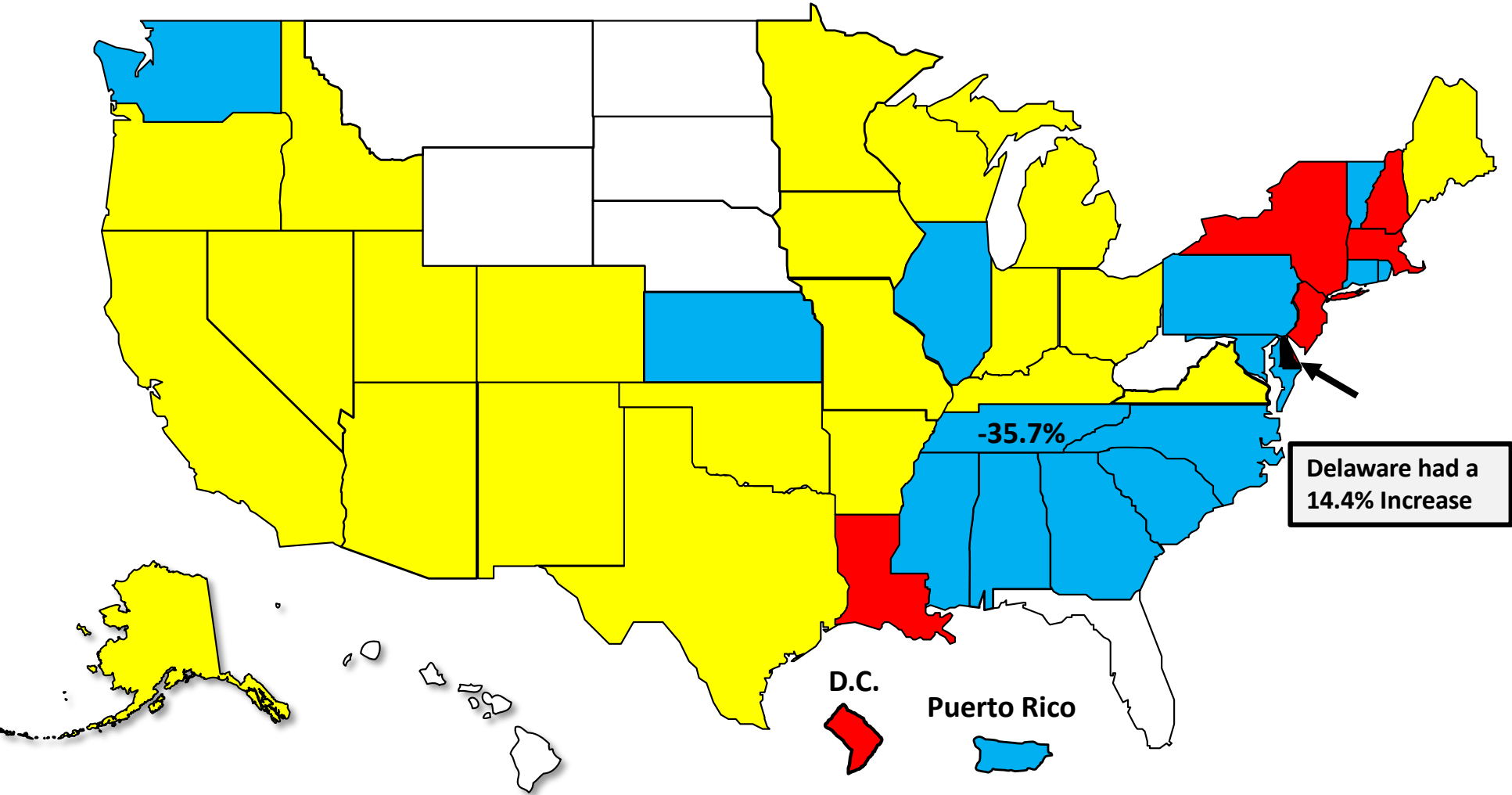
Tennessee National

Bankruptcy Filing Trends

Calendar Year 2020 vs. 2019

National Average = 29.7 % Decrease

- Decline Under 20%
- Decline 20% – 30%
- Decline 30% - 40%
- Decline Over 40%





AMERICAN
BANKRUPTCY
INSTITUTE

www.abi.org