

Bankruptcy Filing Trends in Arkansas



Prepared by: **The American Bankruptcy Institute**

<http://www.abi.org/>



AMERICAN
BANKRUPTCY
INSTITUTE

Updated
February 2020

Arkansas



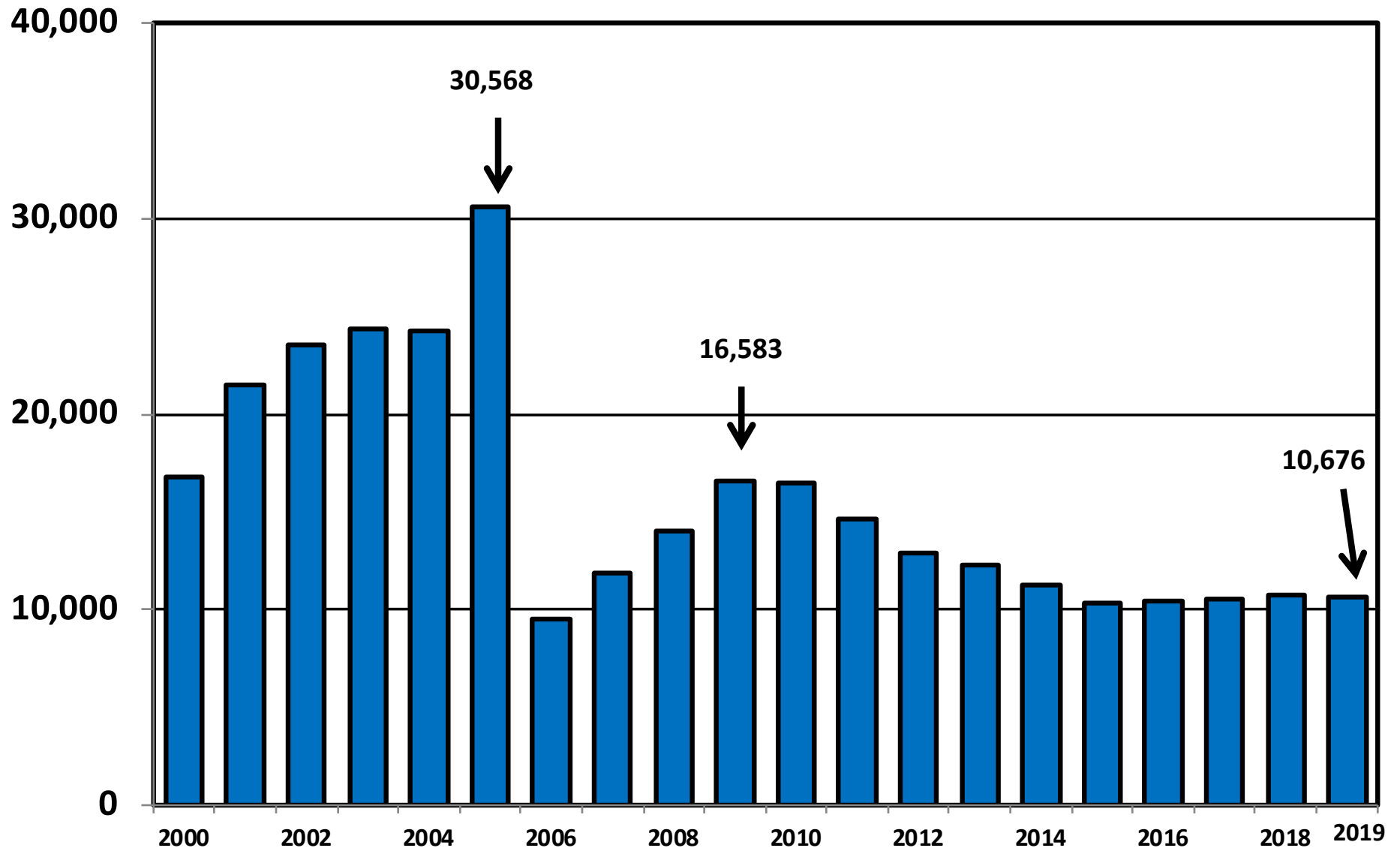
State at a Glance		
	Arkansas	National
Population (7/1/2019)	3,017,804	328,239,523
- Change since 2010	3.5%	6.3%
- Foreign Born	4.8%	13.5%
Size (Square Miles)	52,035	3,531,905
Median Household Income	\$45,726	\$60,293
Persons per Household	2.52	2.63
Per Capita Income	\$25,635	\$32,621
Median Home Value	\$123,300	\$204,900
Homeownership Rate	65.7%	63.8%
High School Graduate (or Higher)	86.2%	87.7%
College Graduate (or Higher)	22.6%	31.5%
Disabled	12.5%	8.6%
No Health Insurance	9.8%	10.0%
In Poverty	17.2%	11.8%
Source: U.S. Census Bureau January 2020		

Bankruptcy Filings in Arkansas**Calendar Years 2000 - 2019**

Year	Total	Chapter 7	Chapter 11	Chapter 13	Other Cases
2000	16,784	9,410	35	7,331	8
2001	21,484	12,641	36	8,801	6
2002	23,546	13,691	43	9,806	6
2003	24,307	14,472	52	9,771	12
2004	24,263	14,170	49	10,043	1
2005	30,568	20,227	40	10,289	12
2006	9,564	4,423	27	5,092	22
2007	11,852	5,945	55	5,840	12
2008	13,991	7,250	97	6,632	12
2009	16,583	9,138	96	7,336	13
2010	16,503	9,150	86	7,254	13
2011	14,604	7,869	68	6,648	19
2012	12,914	6,727	45	6,130	12
2013	12,252	5,938	58	6,243	13
2014	11,236	5,361	39	5,818	18
2015	10,330	4,796	37	5,484	13
2016	10,451	4,908	27	5,499	17
2017	10,539	5,089	32	5,408	10
2018	10,734	5,208	29	5,484	13
2019	10,676	5,147	23	5,492	14

Total Bankruptcy Cases Filed in Arkansas

Calendar Years 2000 - 2019



Total Filings Relative to Population 2000 - 2019



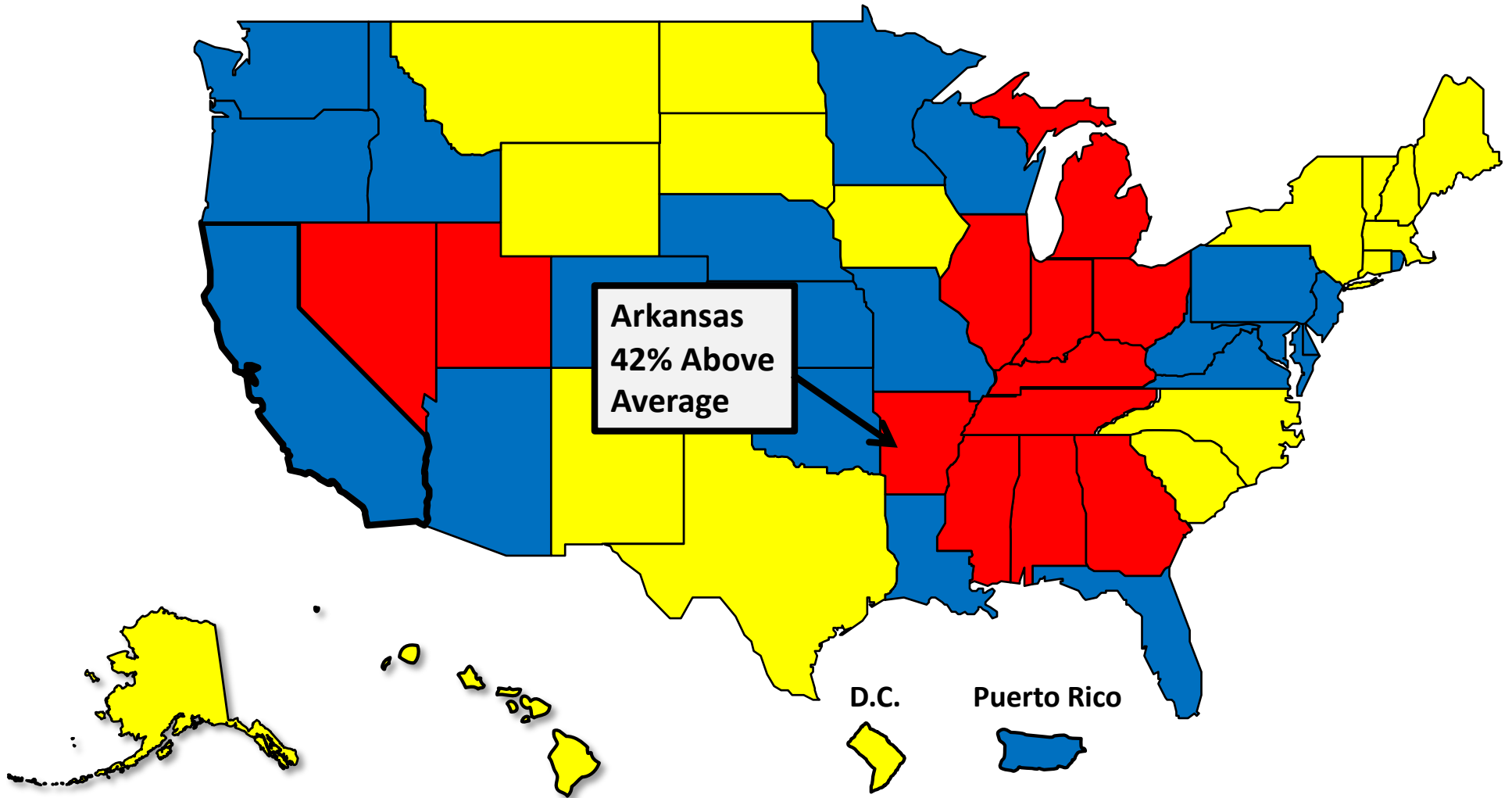
More than 25%
Above Average



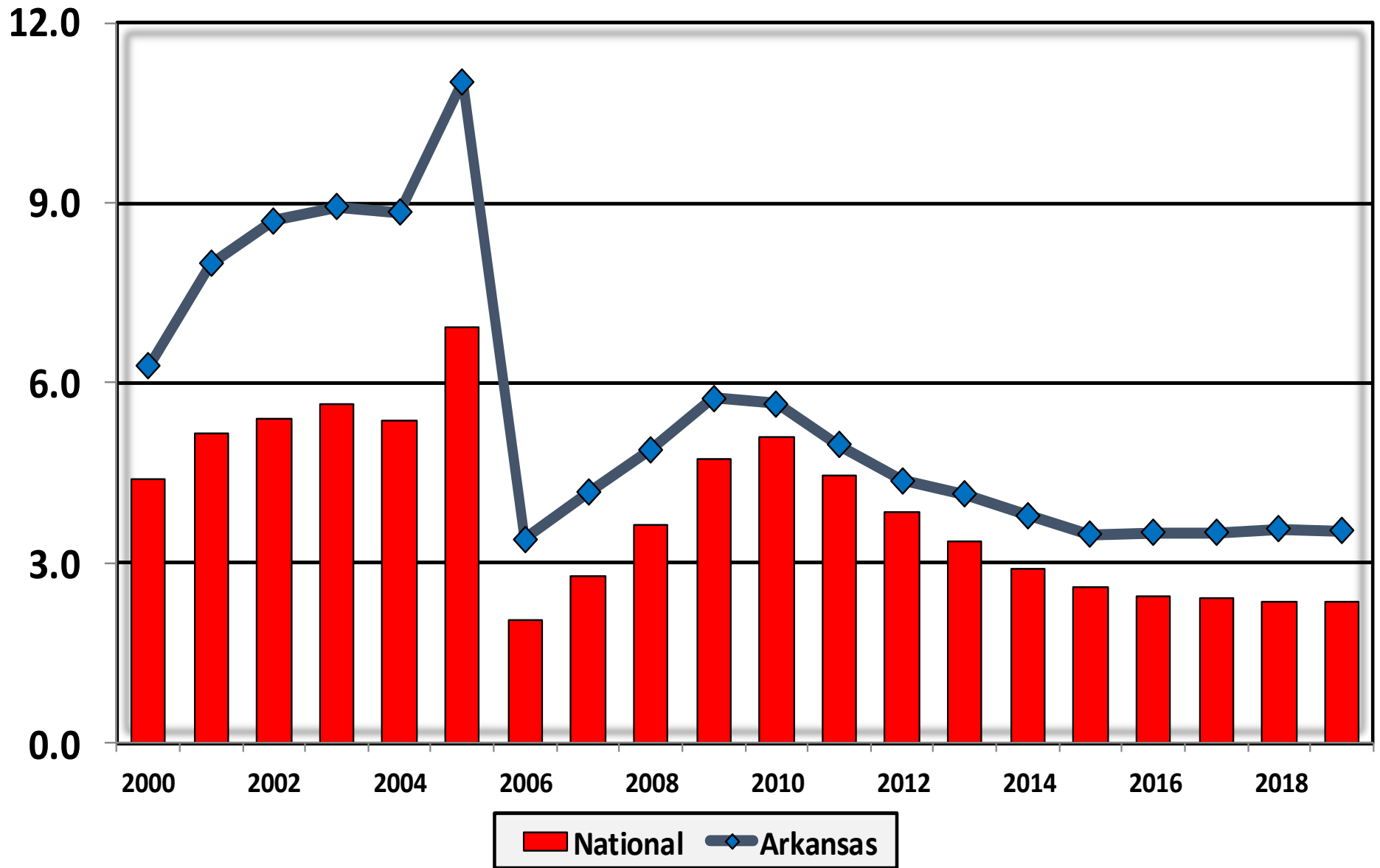
Within 25%
of Average



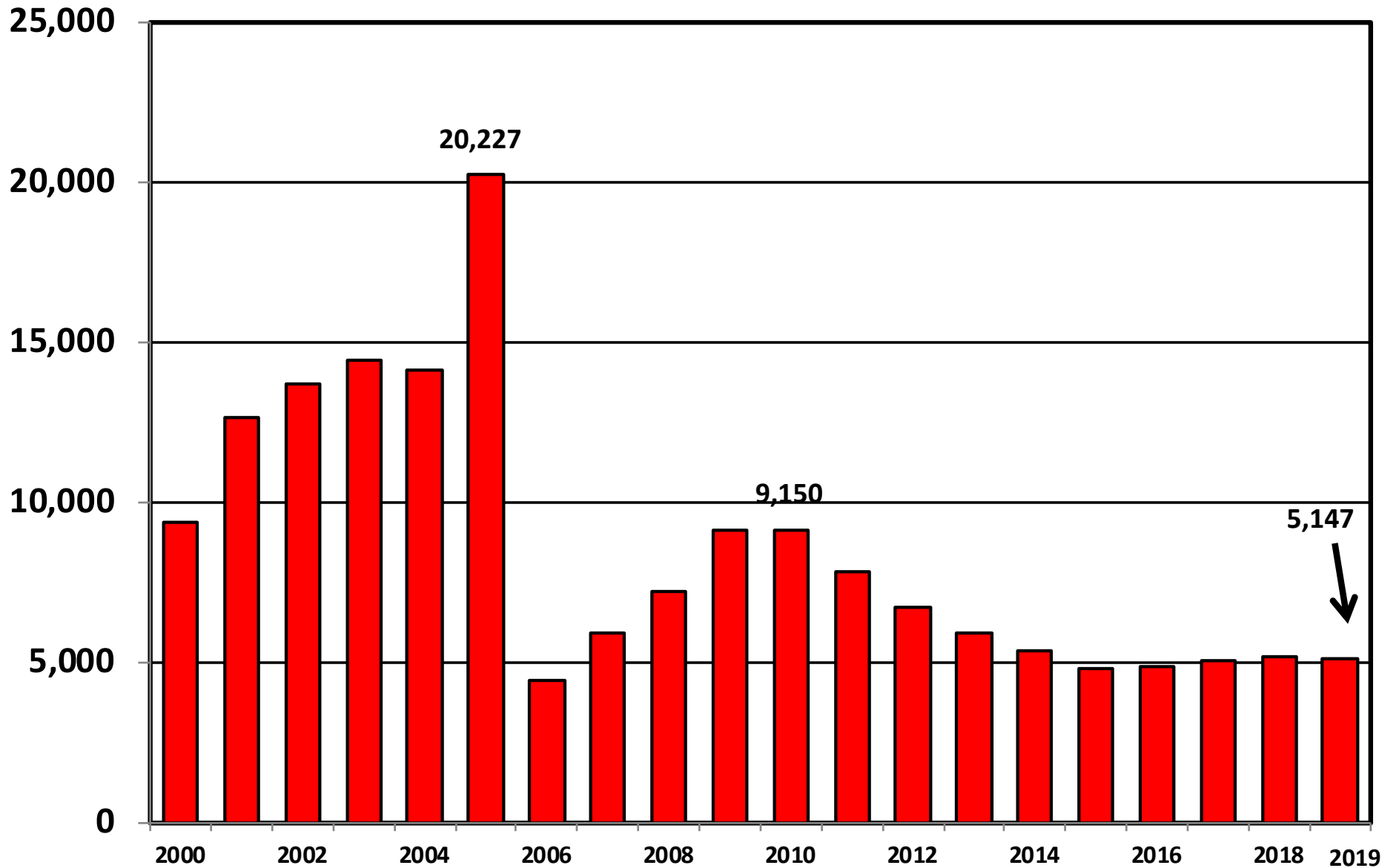
More than 25%
Below Average



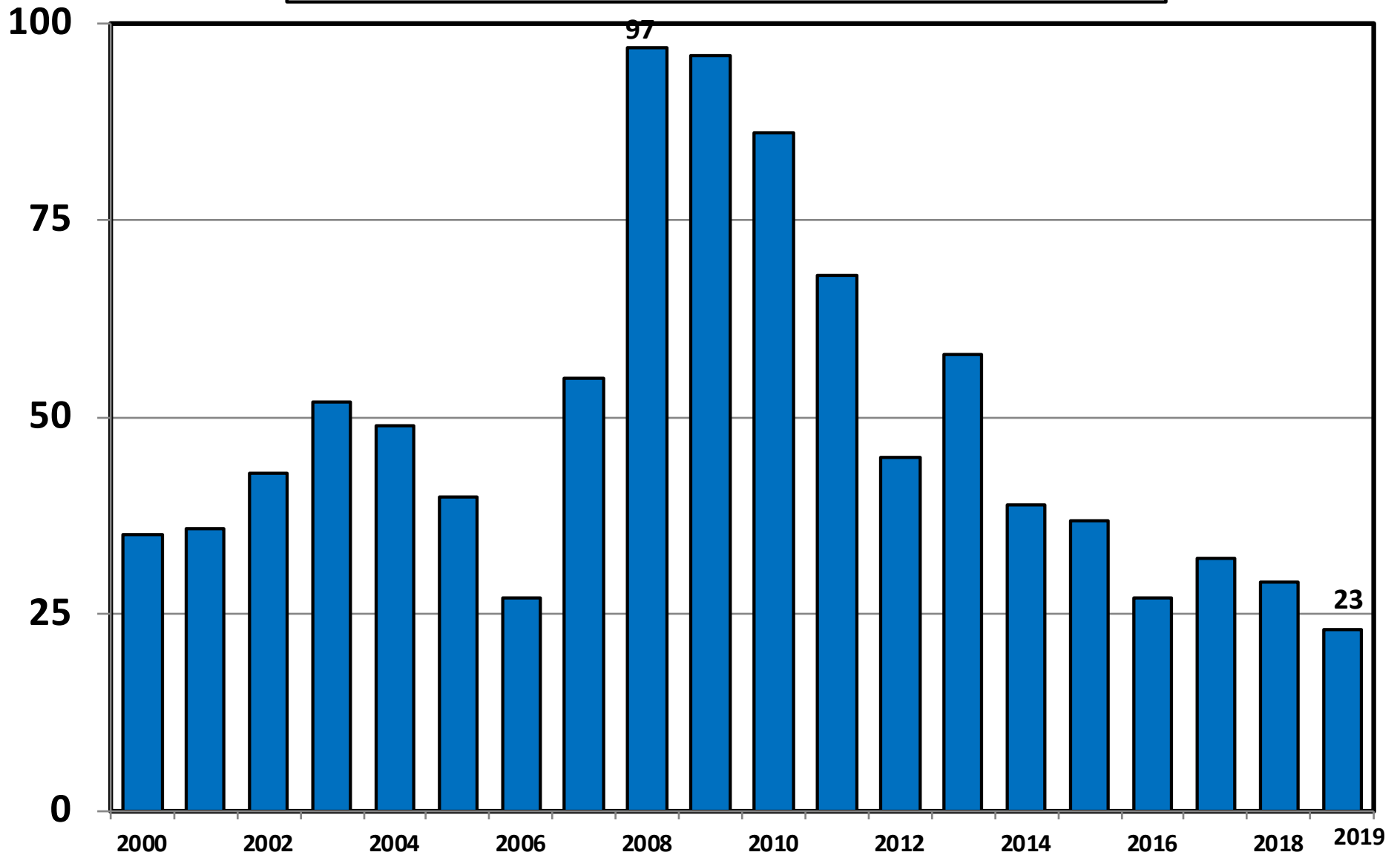
**Bankruptcy Filings per 1,000 Population
Arkansas vs. National Average 2000 - 2019**



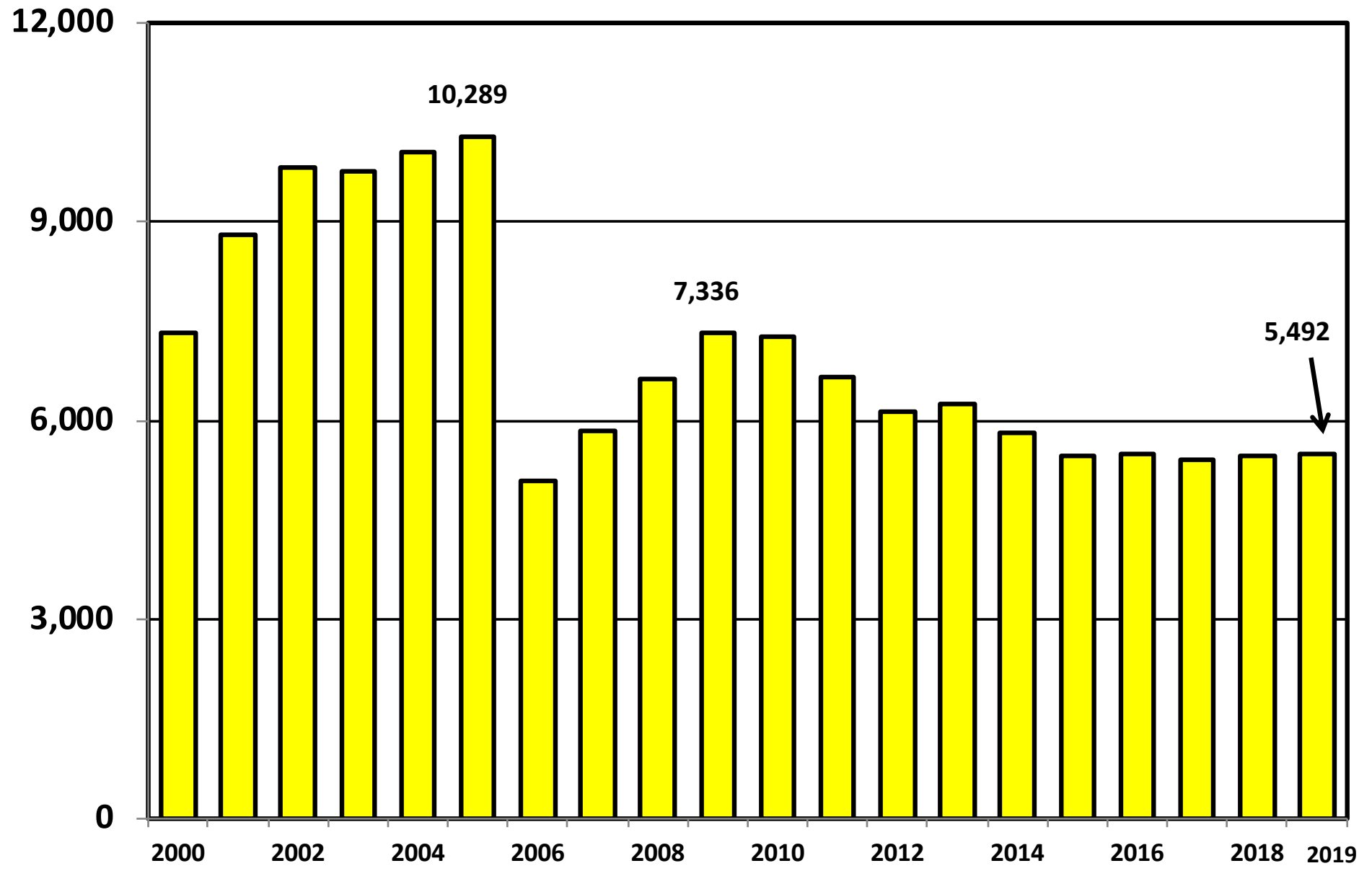
Chapter 7 Cases Filed In Arkansas Calendar Years 2000 - 2019



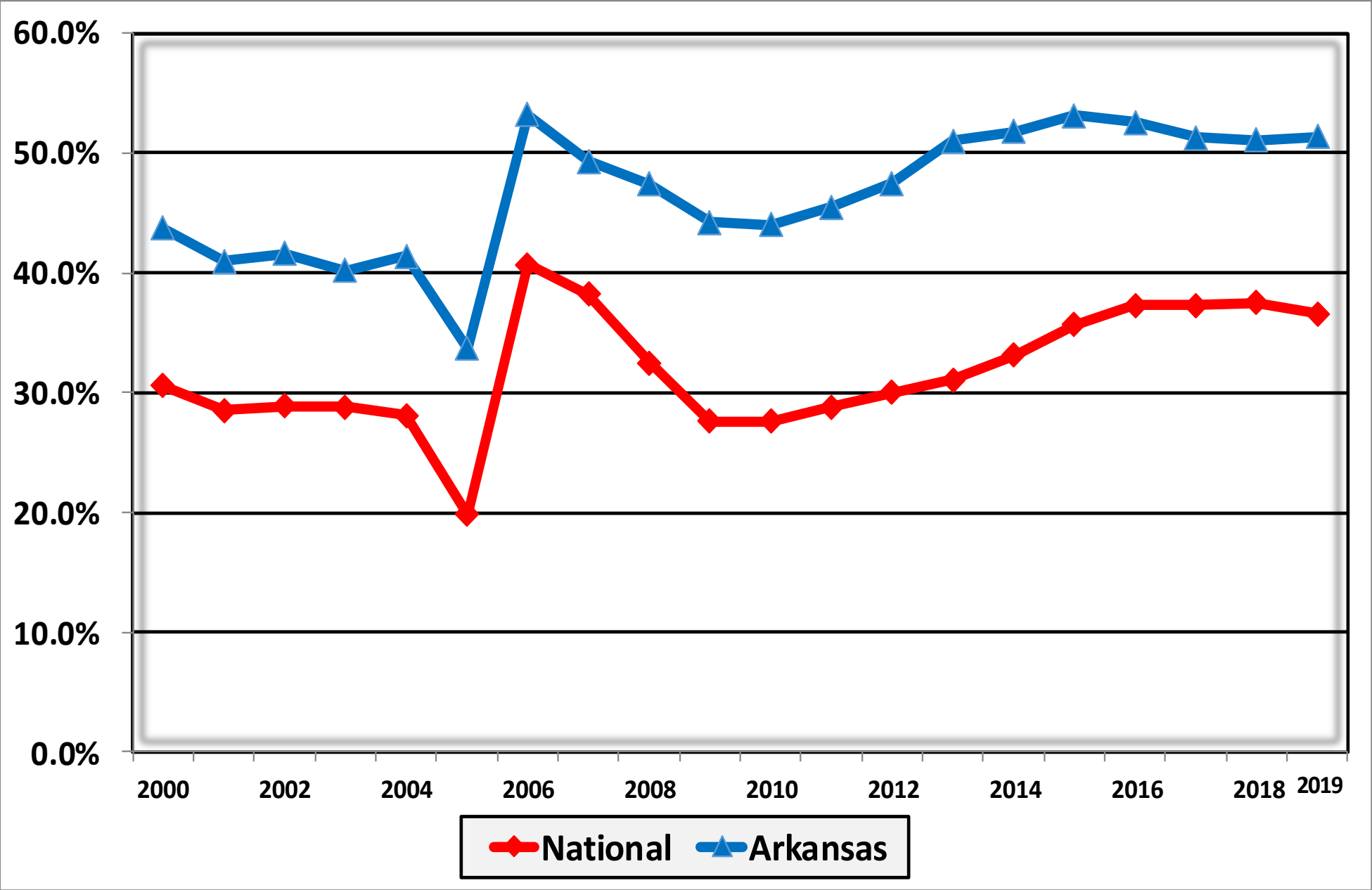
Chapter 11 Cases Filed in Arkansas 2000 - 2019



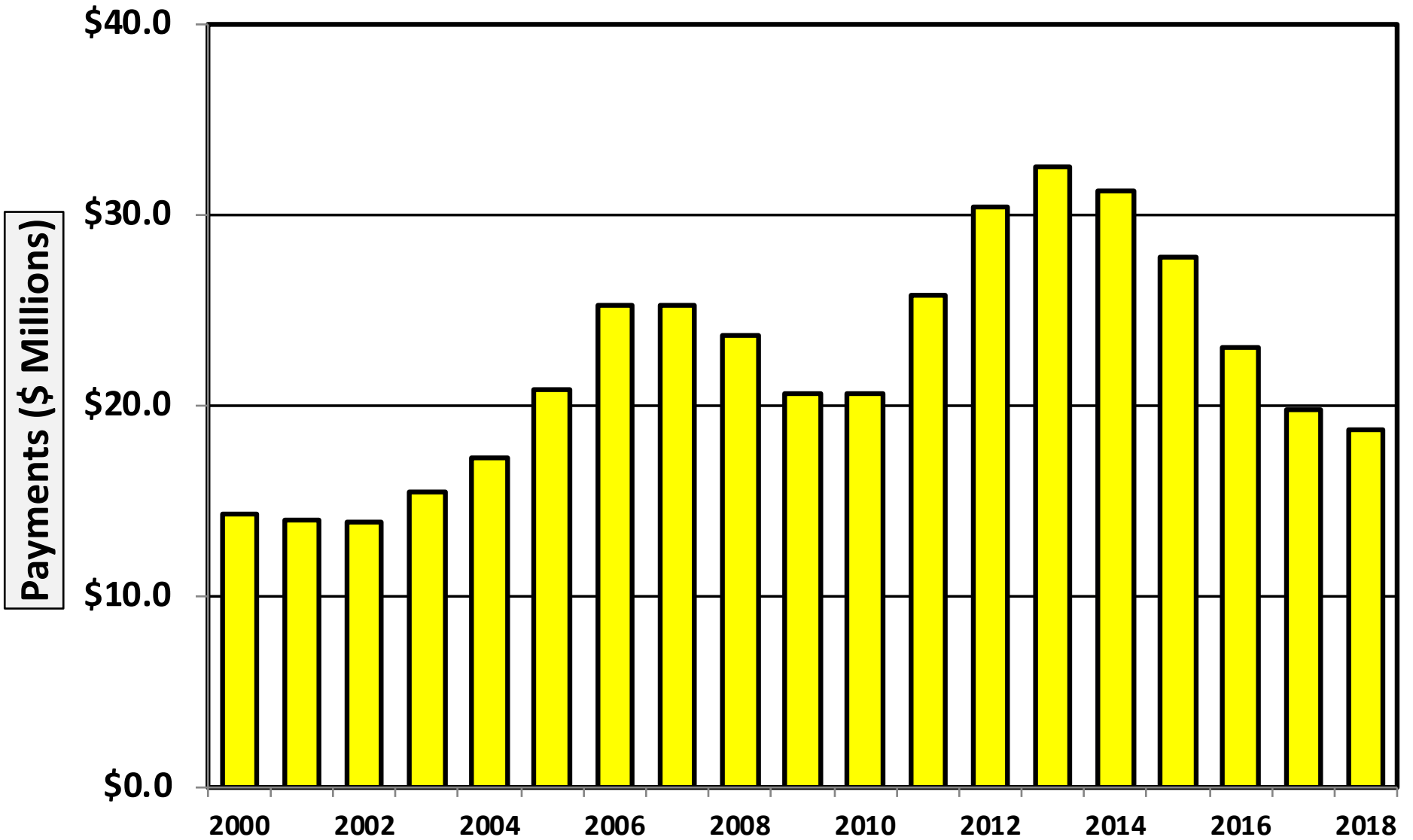
Chapter 13 Cases Filed in Arkansas 2000 - 2019



**Percent of Cases Filed as Chapter 13
Calendar Years 2000 - 2019**

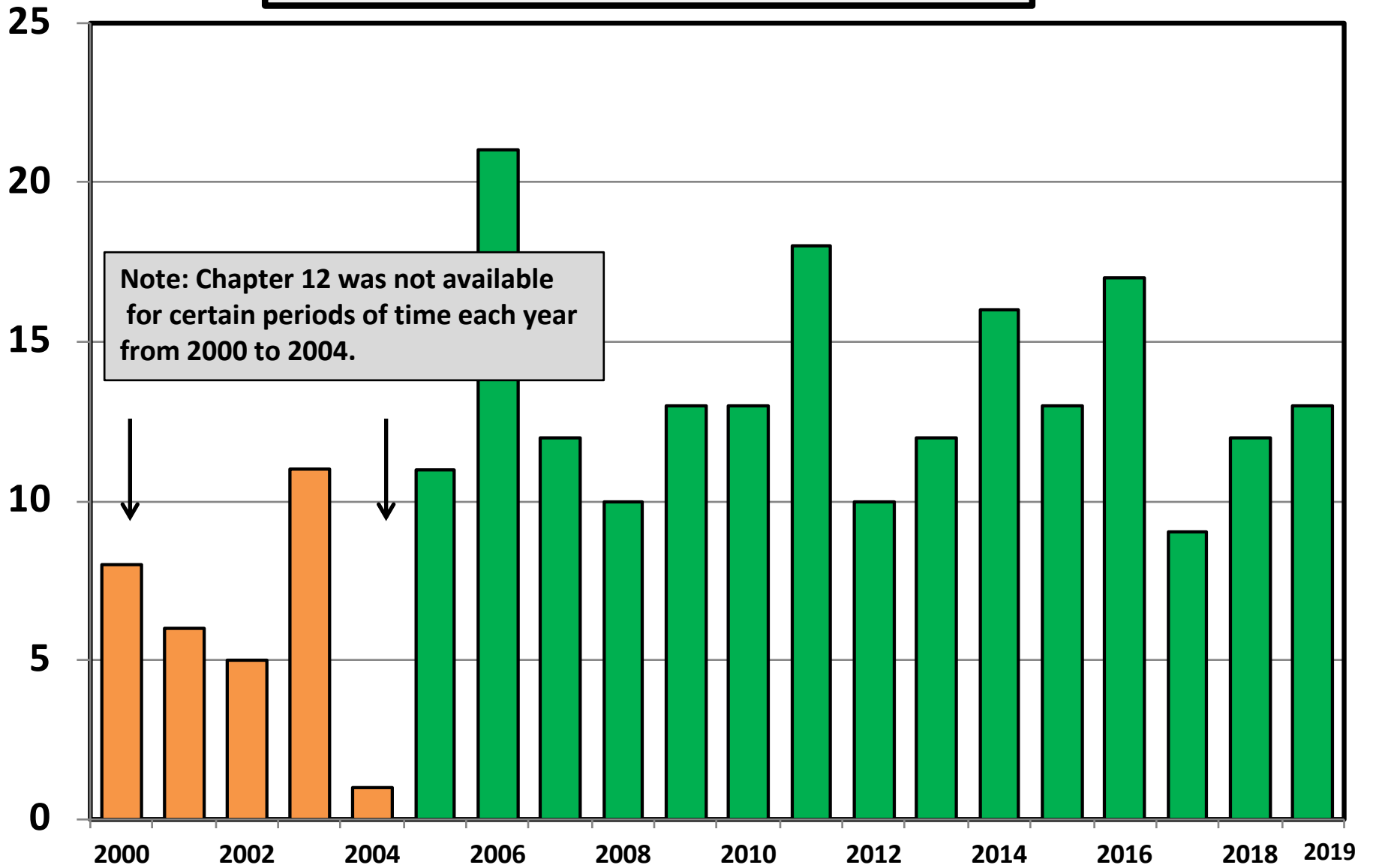


Chapter 13 Cases in Arkansas
Amount (in Millions) Paid to Unsecured Creditors
Fiscal Years 2000 - 2018

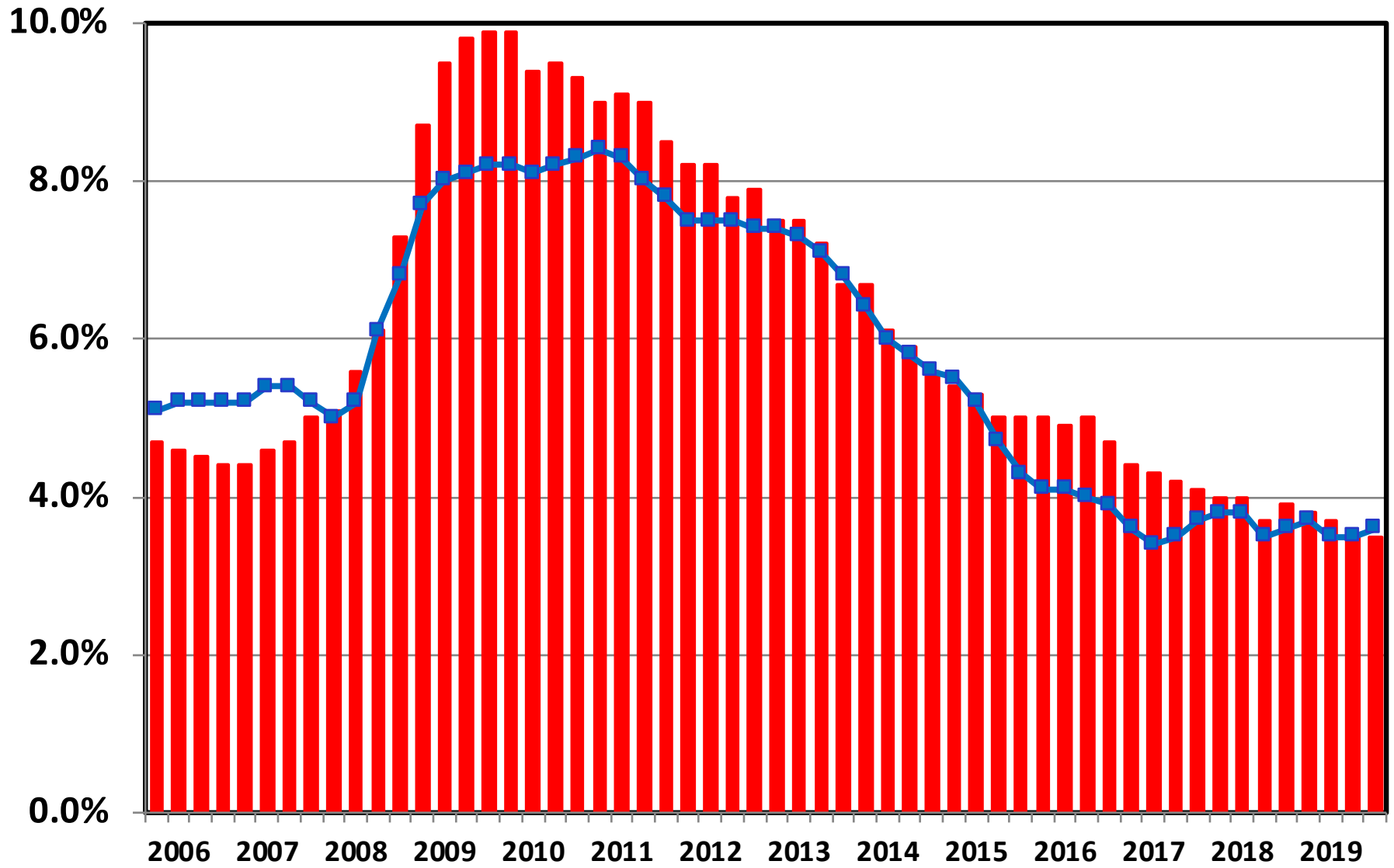


Source: Executive Office for United States Trustees

Chapter 12 Cases Filed in Arkansas 2000 - 2019



Unemployment Rate By Quarter 2006 - 2019

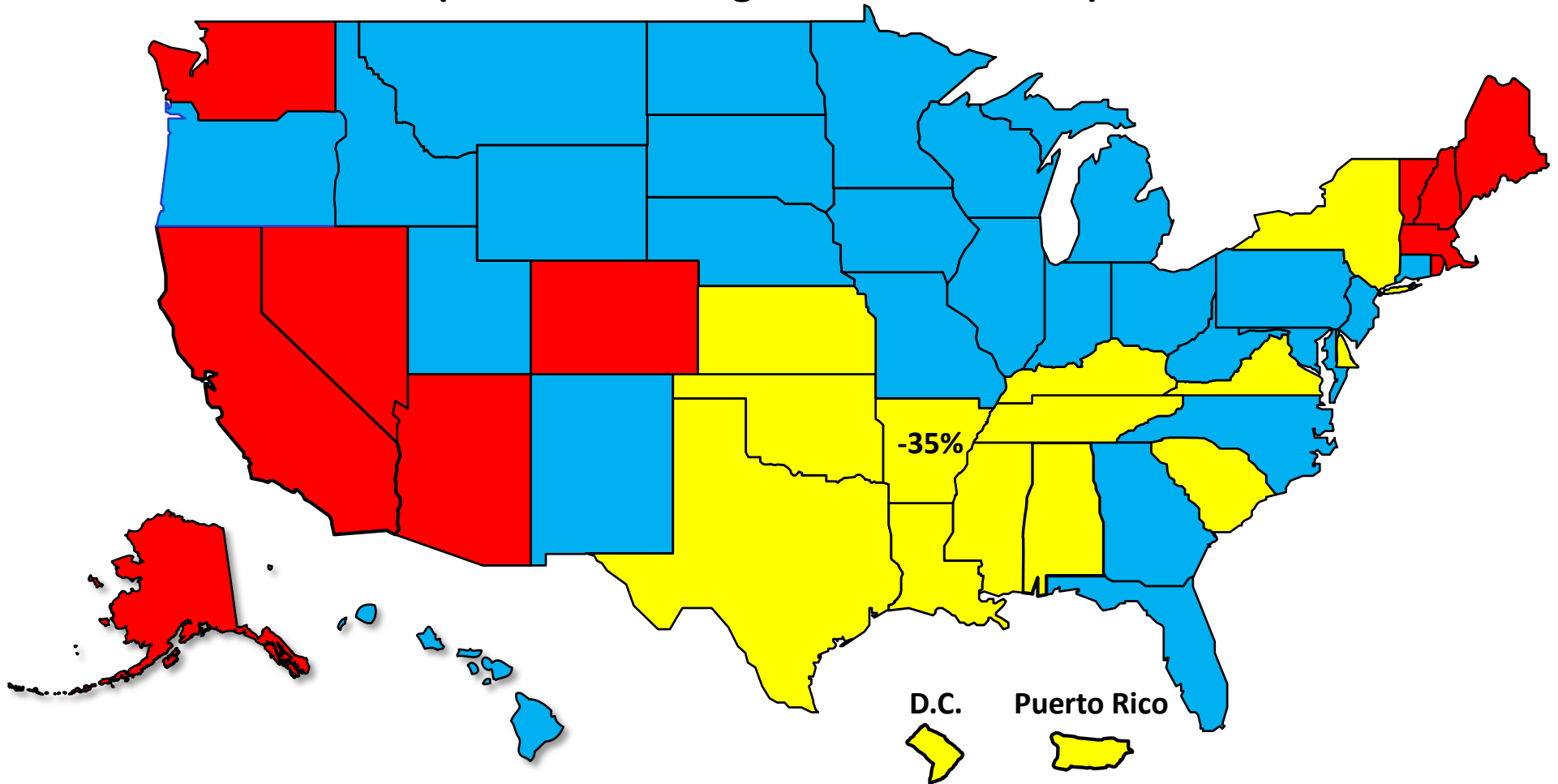


■ National — Arkansas

Source: Bureau of Labor Statistics

Percent Change in Total Filings Calendar Year 2019 Compared to 2010

(National Average = 51% Decrease)



Amount of Decrease



Under 40%

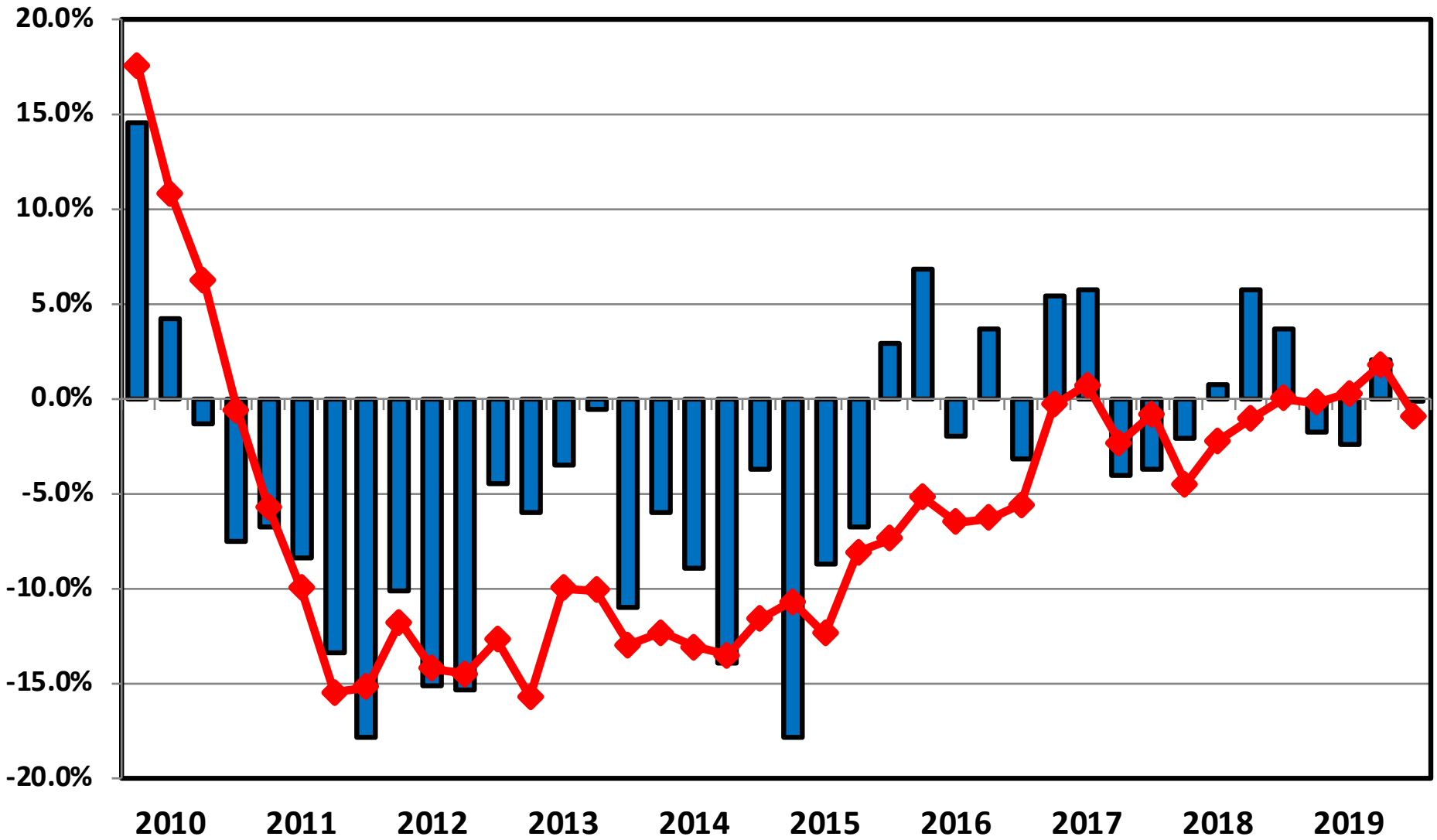


40.0% – 59.9%



60.0% or More

**Filing Trends By Quarter Arkansas vs. National Average
(Percent Change From Same Quarter One Year Prior)**



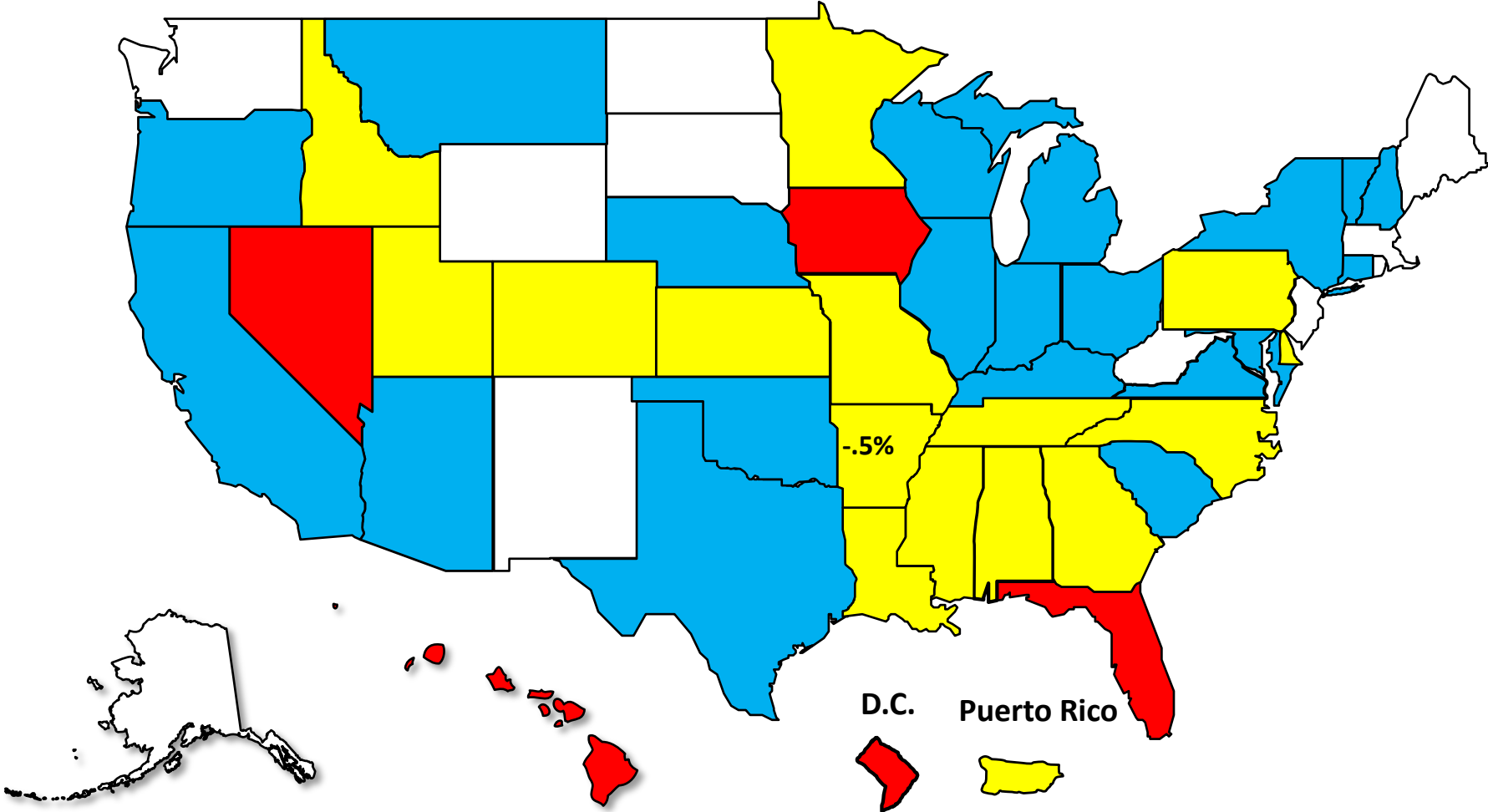
Arkansas **National**

Bankruptcy Filing Trends

Calendar Year 2019 vs. 2018

National Average = .2% Increase

- Decline Over 5%
- Decline 0 - 5%
- Increase 0 - 5%
- Increase Over 5%





AMERICAN
BANKRUPTCY
INSTITUTE

www.abi.org