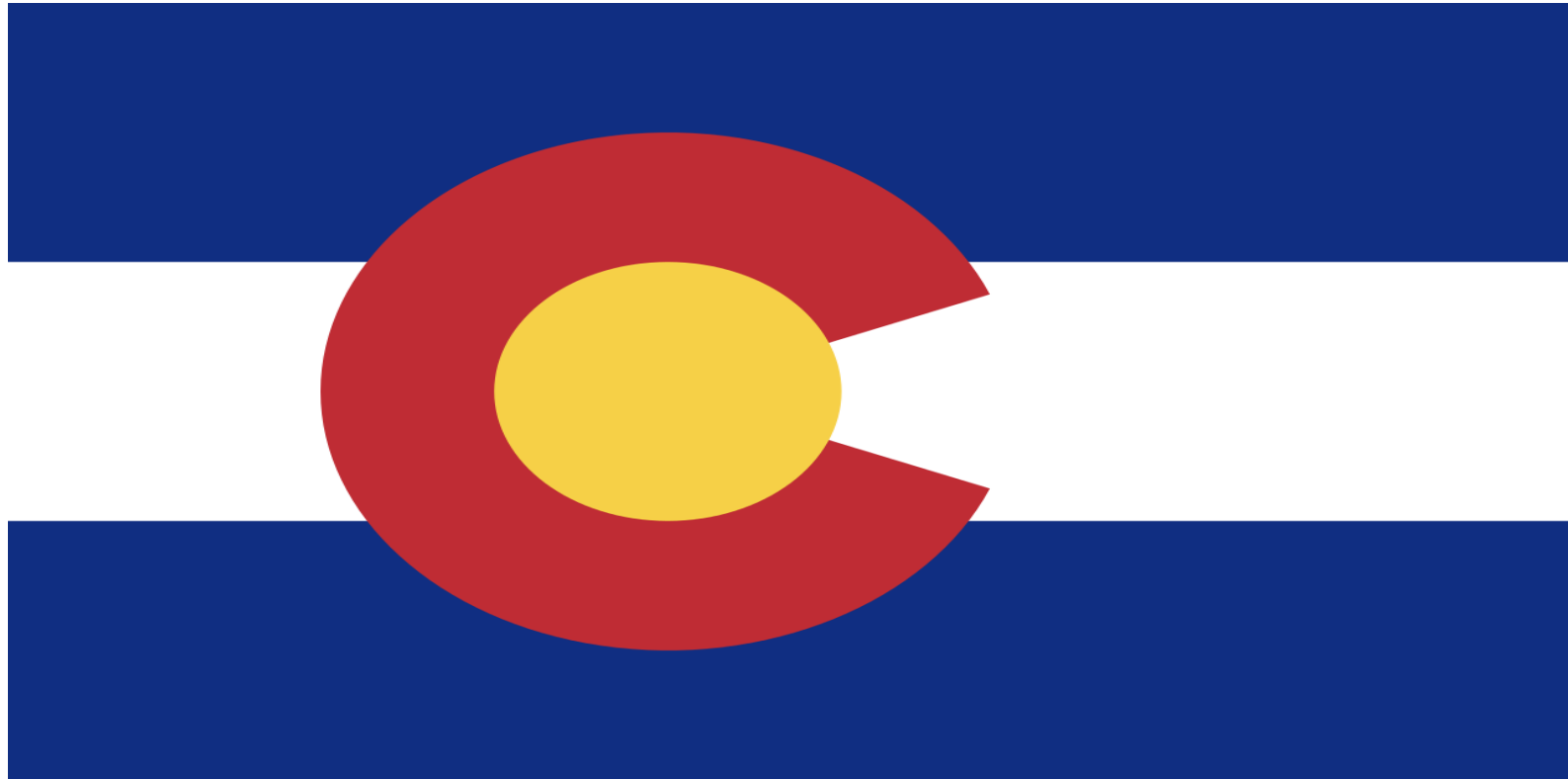


Bankruptcy Filing Trends in Colorado



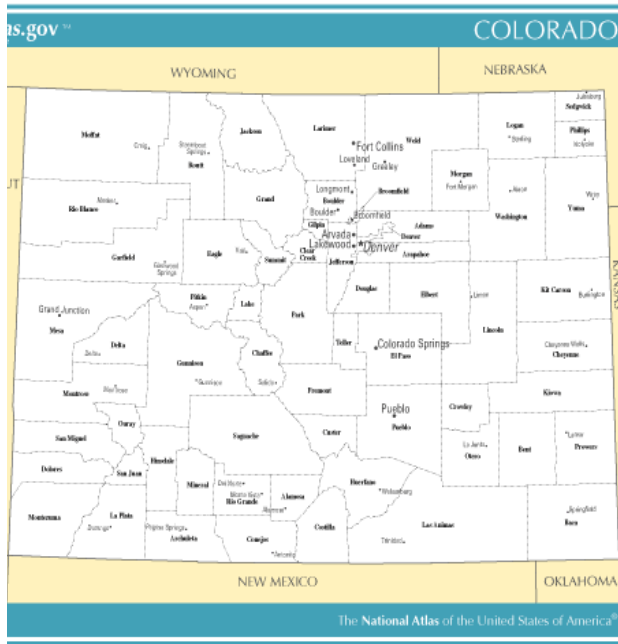
Prepared by: **The American Bankruptcy Institute**
<http://www.abi.org/>



AMERICAN
BANKRUPTCY
INSTITUTE

Updated
February 2020

Colorado



State at a Glance

	Colorado	National
Population (7/1/2019)	5,758,736	328,239,523
- Change since 2010	14.5%	6.3%
- Foreign Born	9.8%	13.5%
Size (Square Miles)	103,642	3,531,905
Median Household Income	\$68,811	\$60,293
Persons per Household	2.56	2.63
Per Capita Income	\$36,415	\$32,621
Median Home Value	\$313,600	\$204,900
Homeownership Rate	64.9%	63.8%
High School Graduate (or Higher)	91.4%	87.7%
College Graduate (or Higher)	40.1%	31.5%
Disabled	7.3%	8.6%
No Health Insurance	8.6%	10.0%
In Poverty	9.6%	11.8%
Source: U.S. Census Bureau January 2020		

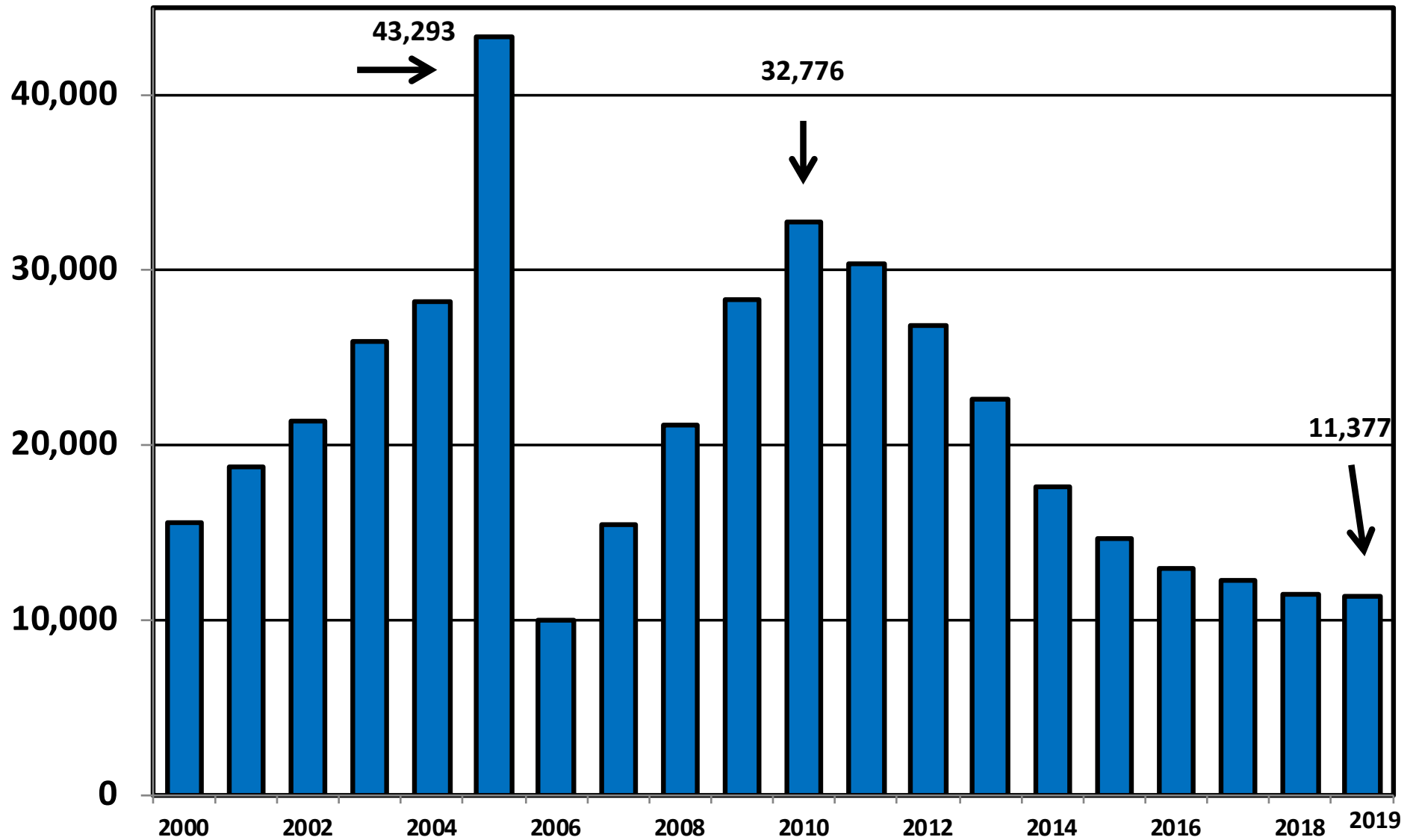
Prepared by: The American Bankruptcy Institute

<http://www.abi.org>

Bankruptcy Filings in Colorado**Calendar Years 2000 - 2019**

Year	Total	Chapter 7	Chapter 11	Chapter 13	Other Cases
2000	15,558	13,126	75	2,344	13
2001	18,800	16,303	105	2,389	3
2002	21,359	18,630	113	2,607	9
2003	25,956	23,230	79	2,638	9
2004	28,169	25,159	104	2,902	4
2005	43,293	40,355	81	2,851	6
2006	9,979	8,189	76	1,712	2
2007	15,499	12,962	75	2,461	1
2008	21,136	18,033	122	2,976	5
2009	28,304	23,955	187	4,152	10
2010	32,776	27,371	182	5,214	9
2011	30,409	25,225	139	5,043	2
2012	26,809	22,111	147	4,547	4
2013	22,629	18,971	113	3,537	8
2014	17,632	14,823	73	2,730	6
2015	14,725	11,936	85	2,699	5
2016	12,957	10,219	81	2,657	0
2017	12,268	9,528	88	2,650	2
2018	11,445	8,882	63	2,492	8
2019	11,377	8,798	66	2,510	3

District of Colorado Total Bankruptcy Cases Filed 2000 - 2019



Total Filings Relative to Population 2000 - 2019



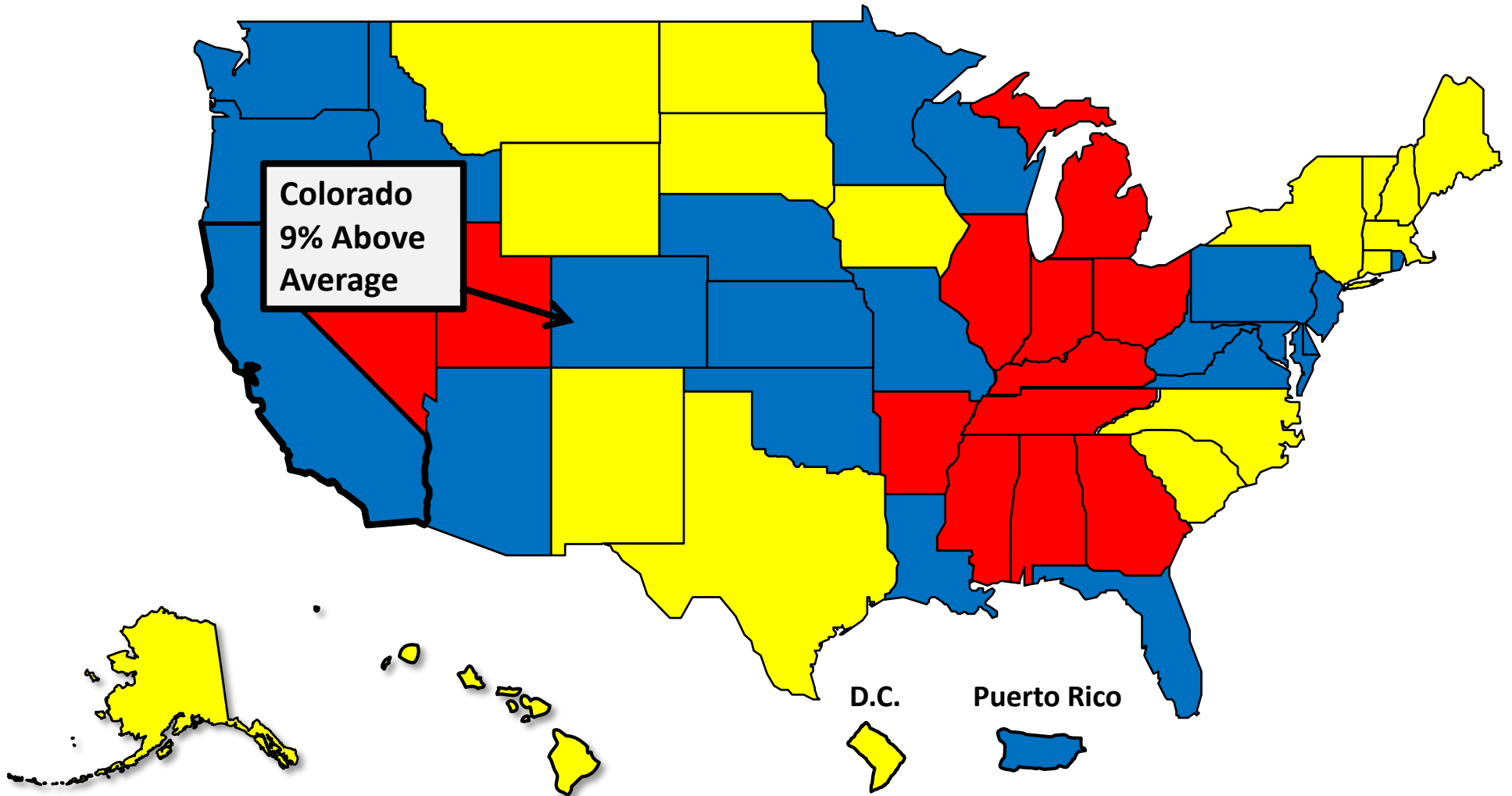
More than 25%
Above Average



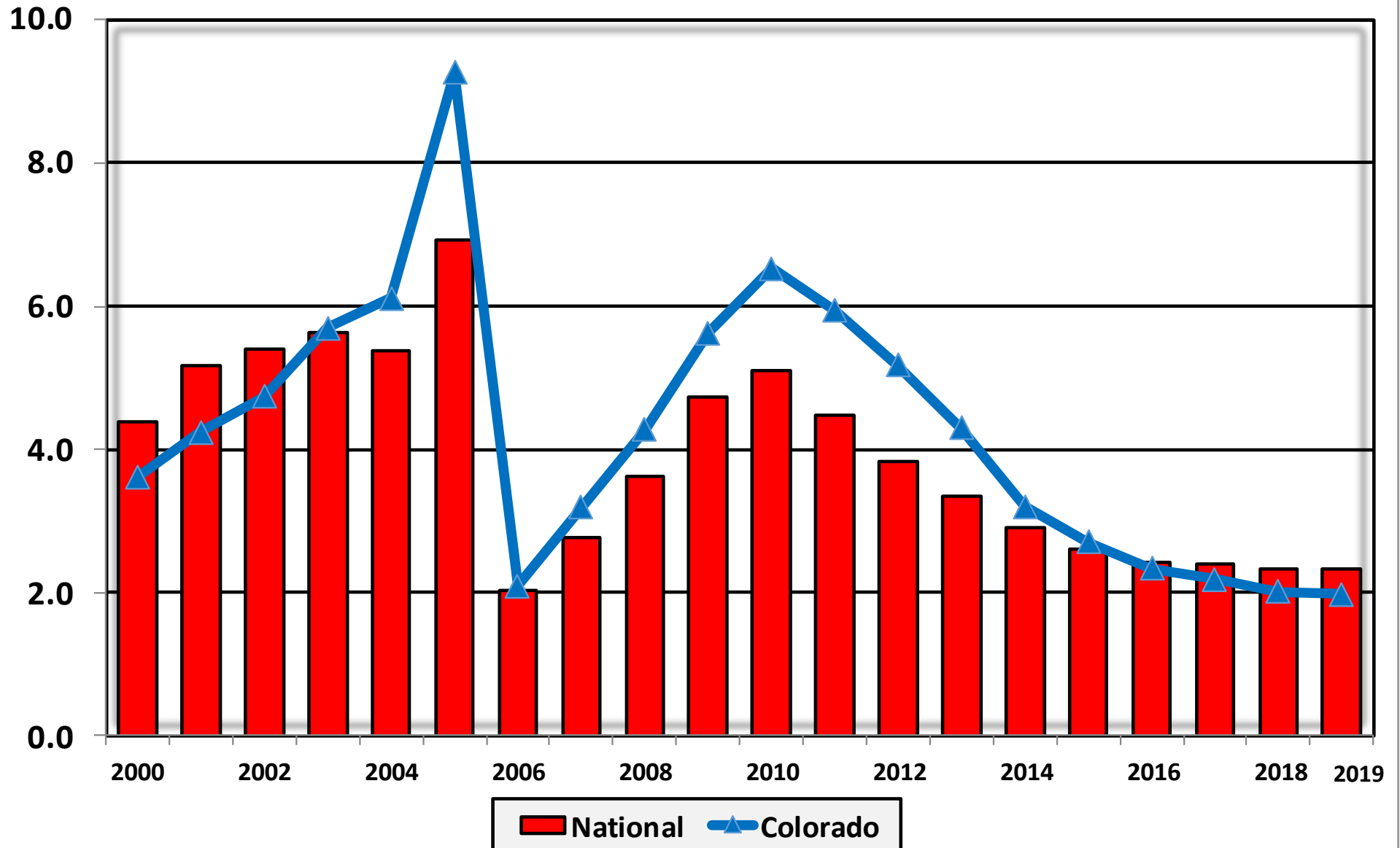
Within 25%
of Average



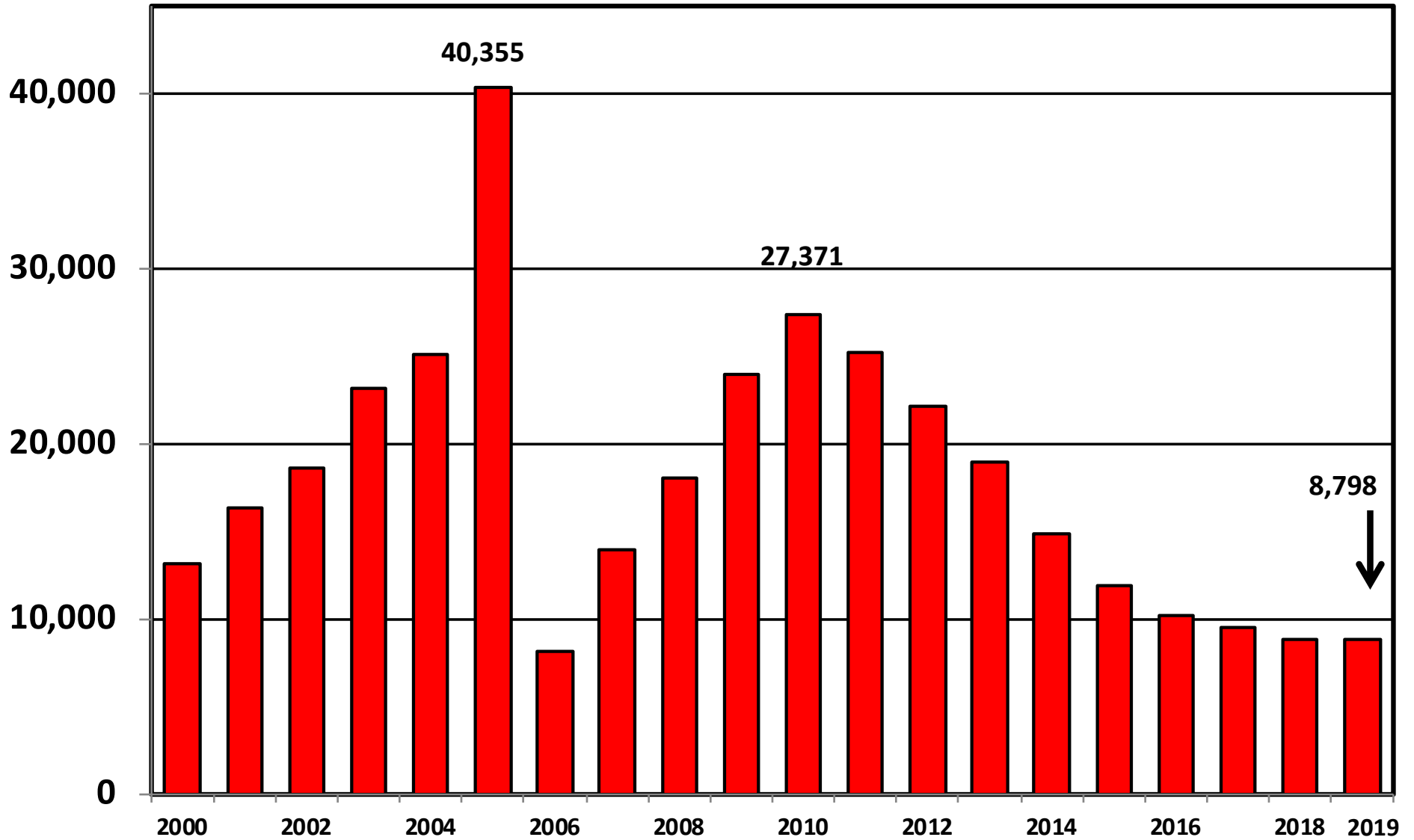
More than 25%
Below Average



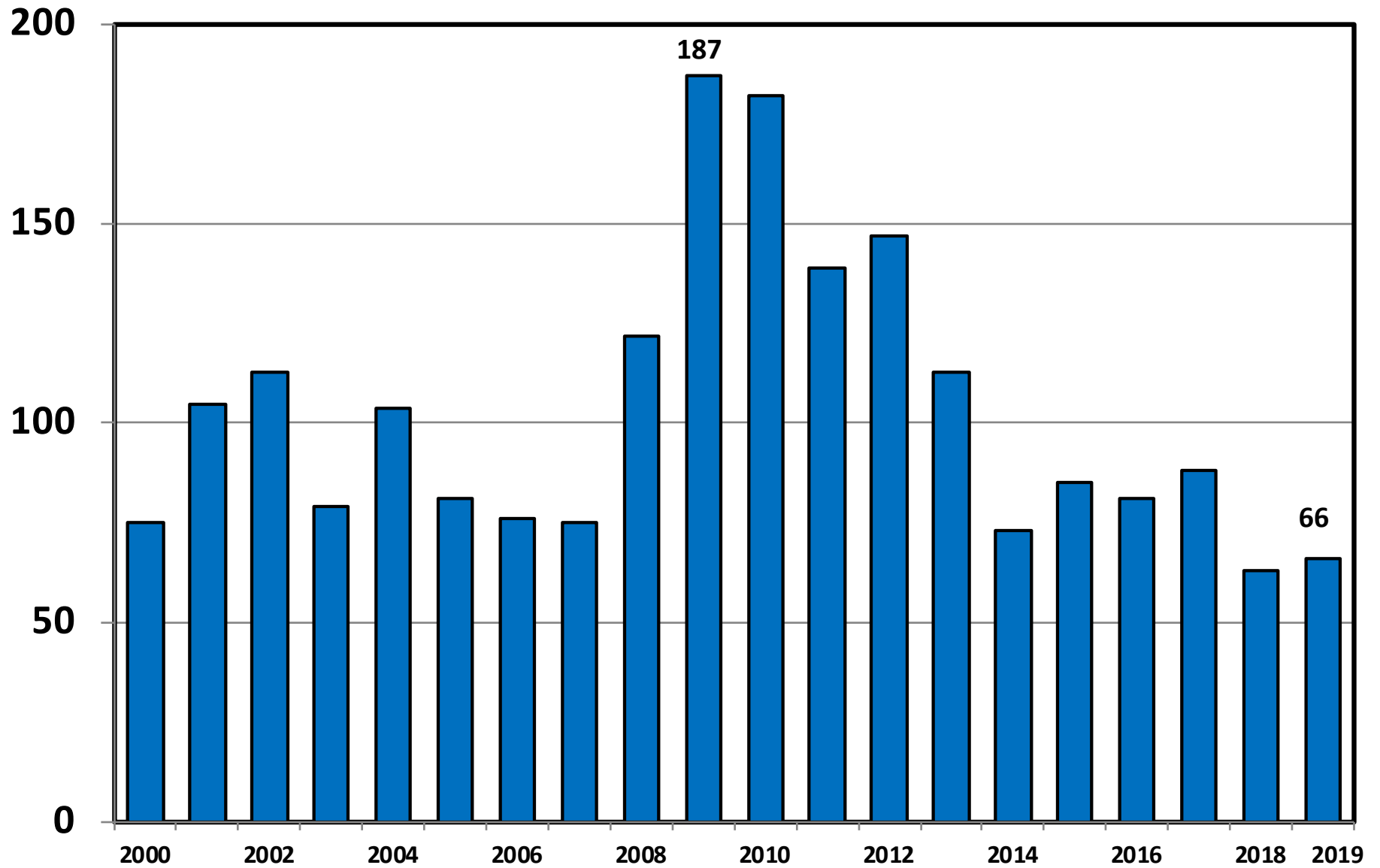
Bankruptcy Filings per 1,000 Population Colorado vs. National Average 2000 - 2019



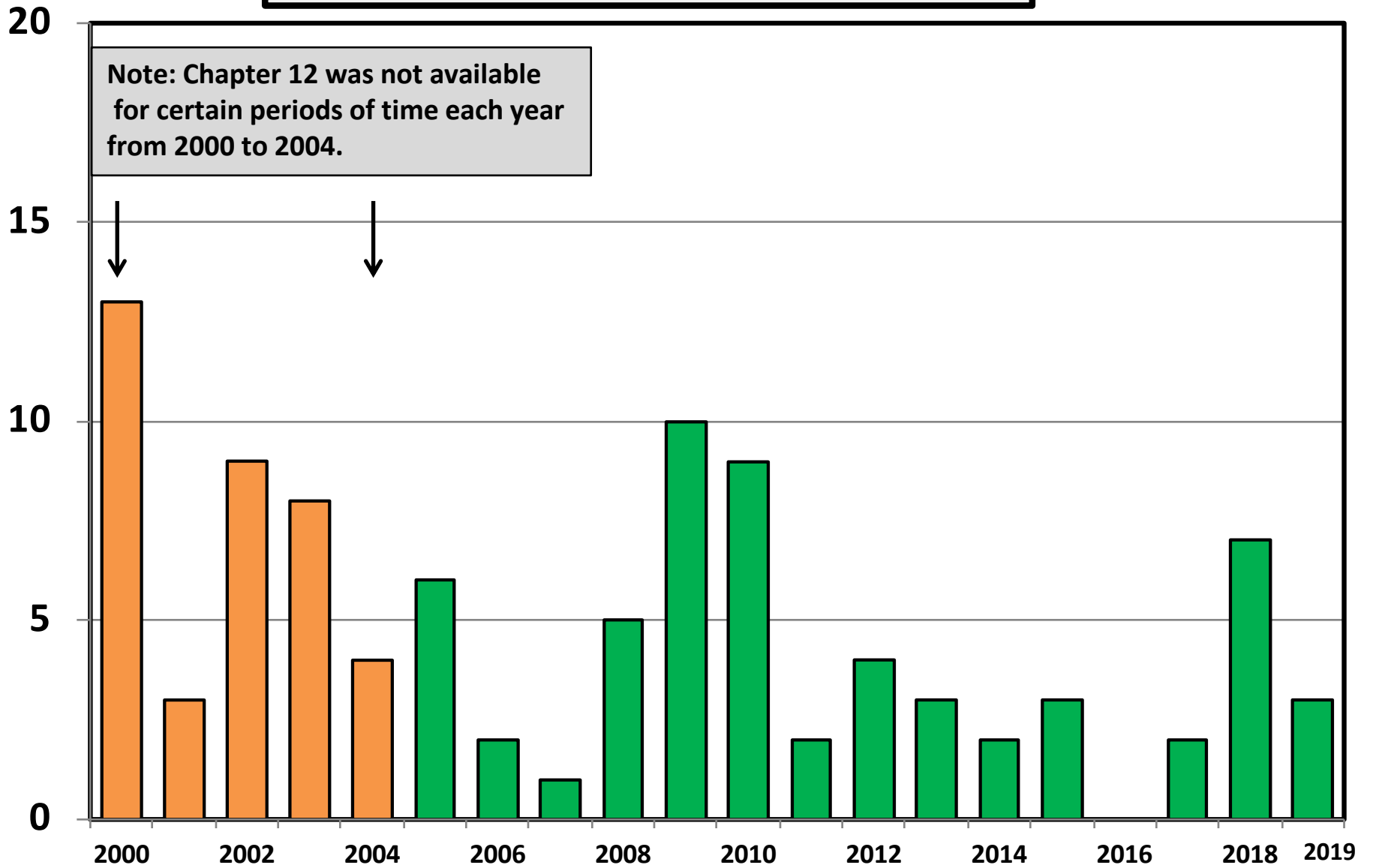
District of Colorado Chapter 7 Cases Filed 2000 - 2019



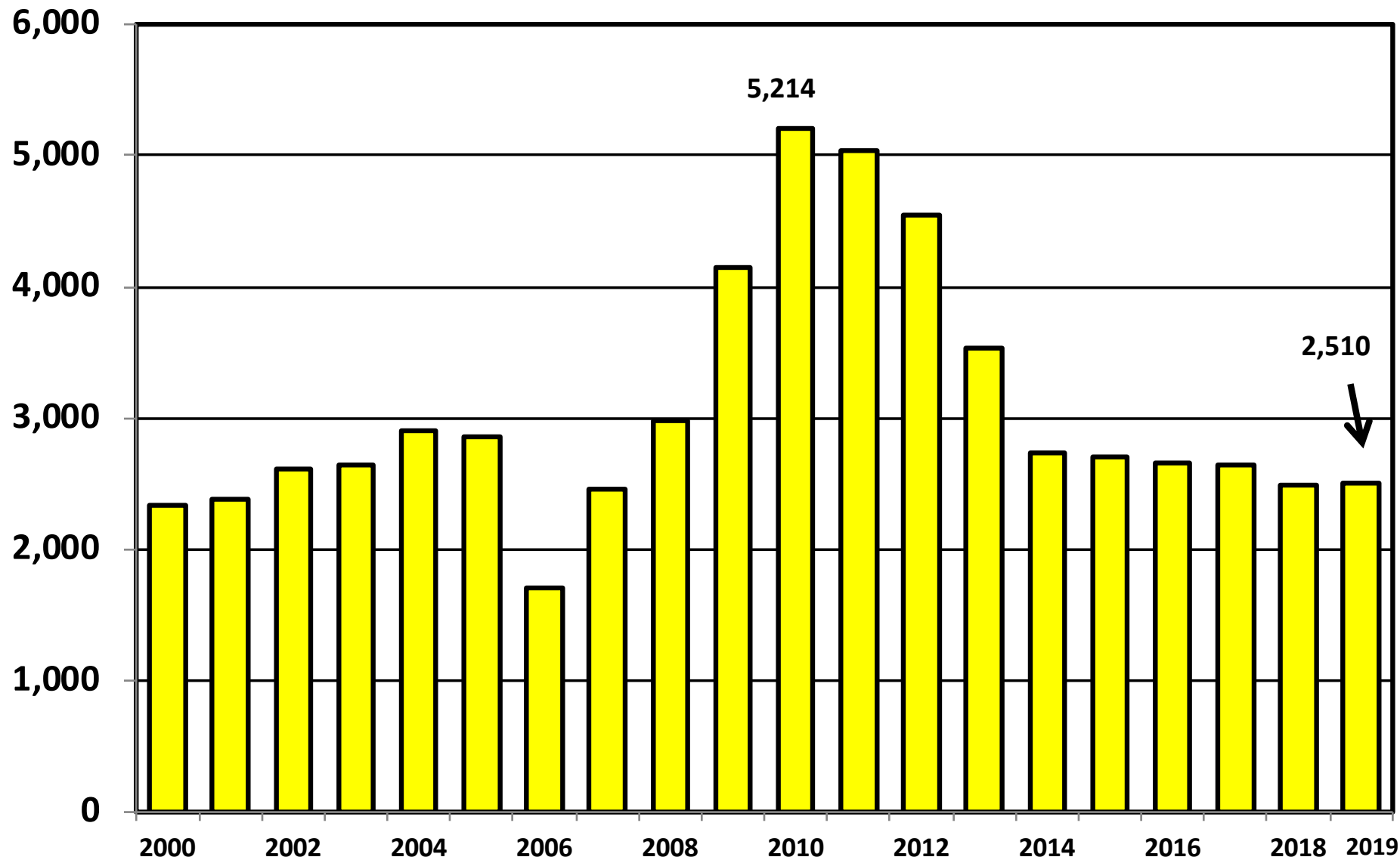
Chapter 11 Cases Filed in Colorado 2000 - 2019



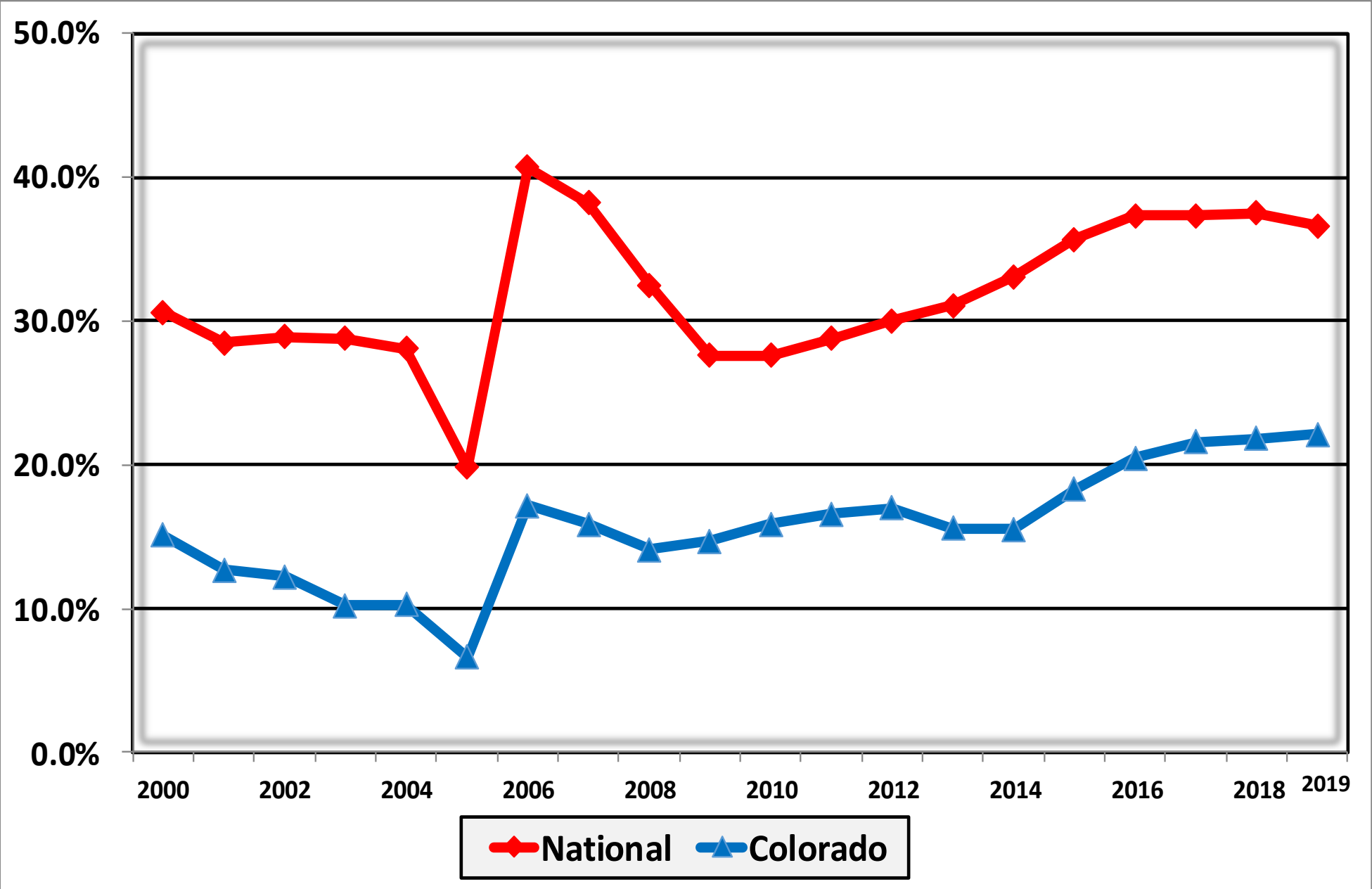
Chapter 12 Cases Filed in Colorado 2000 - 2019



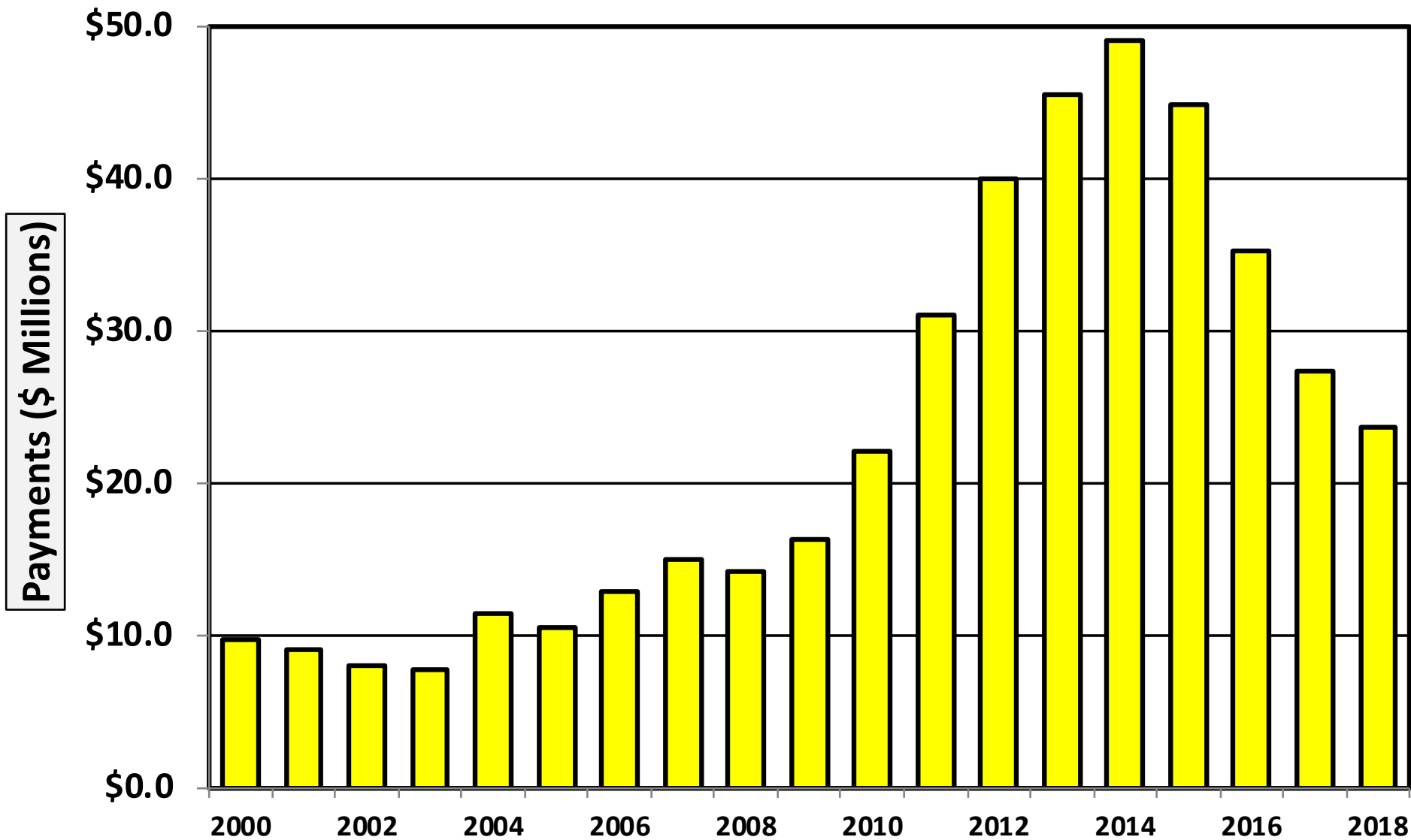
District of Colorado Chapter 13 Cases Filed 2000 - 2019



**Percent of Cases Filed as Chapter 13
Calendar Years 2000 - 2019**

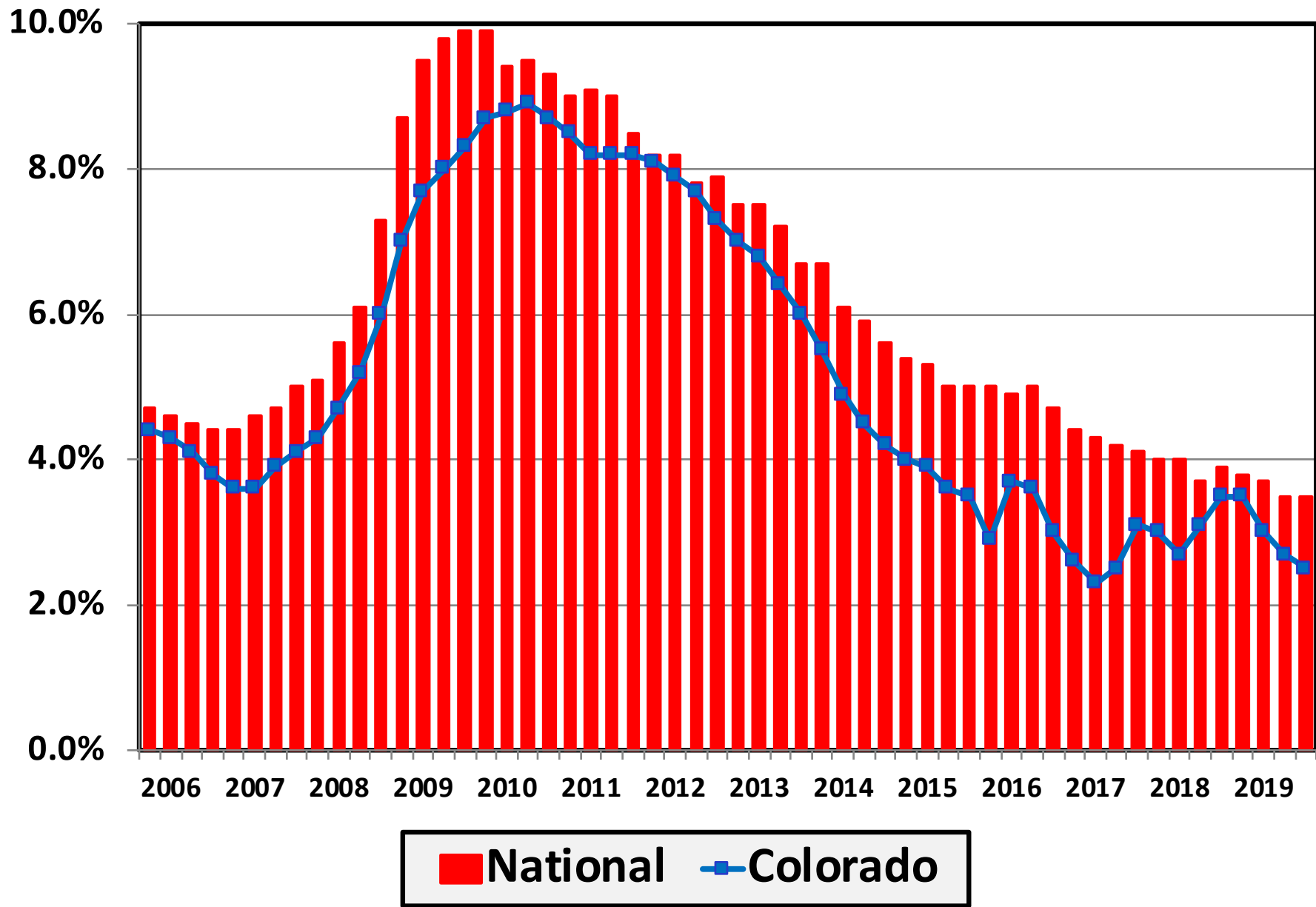


Chapter 13 Cases in Colorado
Amount (in Millions) Paid to Unsecured Creditors
Fiscal Years 2000 - 2018



Source: Executive Office for United States Trustees

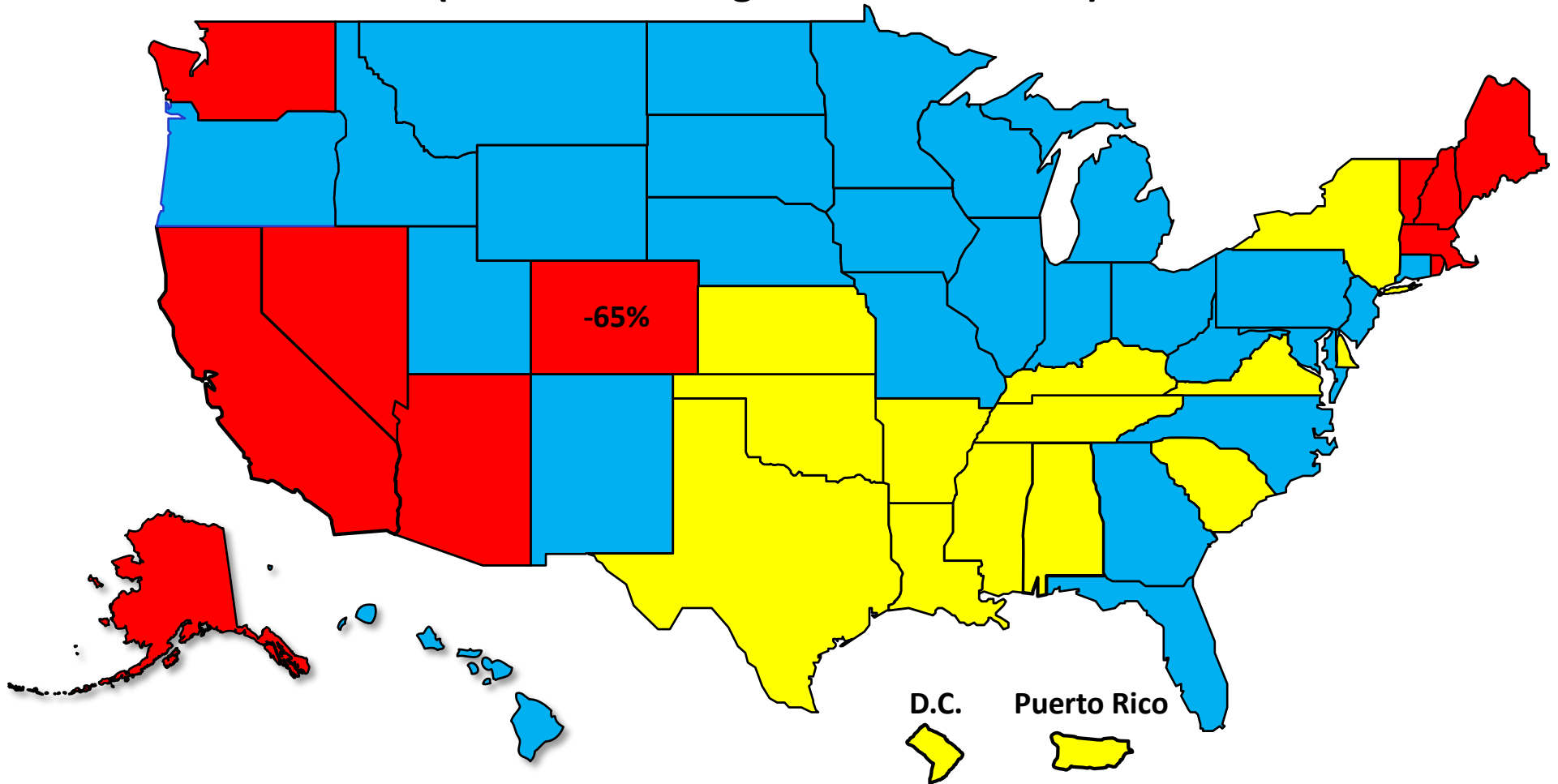
Unemployment Rate By Quarter 2006 - 2019



Source: Bureau of Labor Statistics

Percent Change in Total Filings Calendar Year 2019 Compared to 2010

(National Average = 51% Decrease)



Amount of Decrease



Under 40%

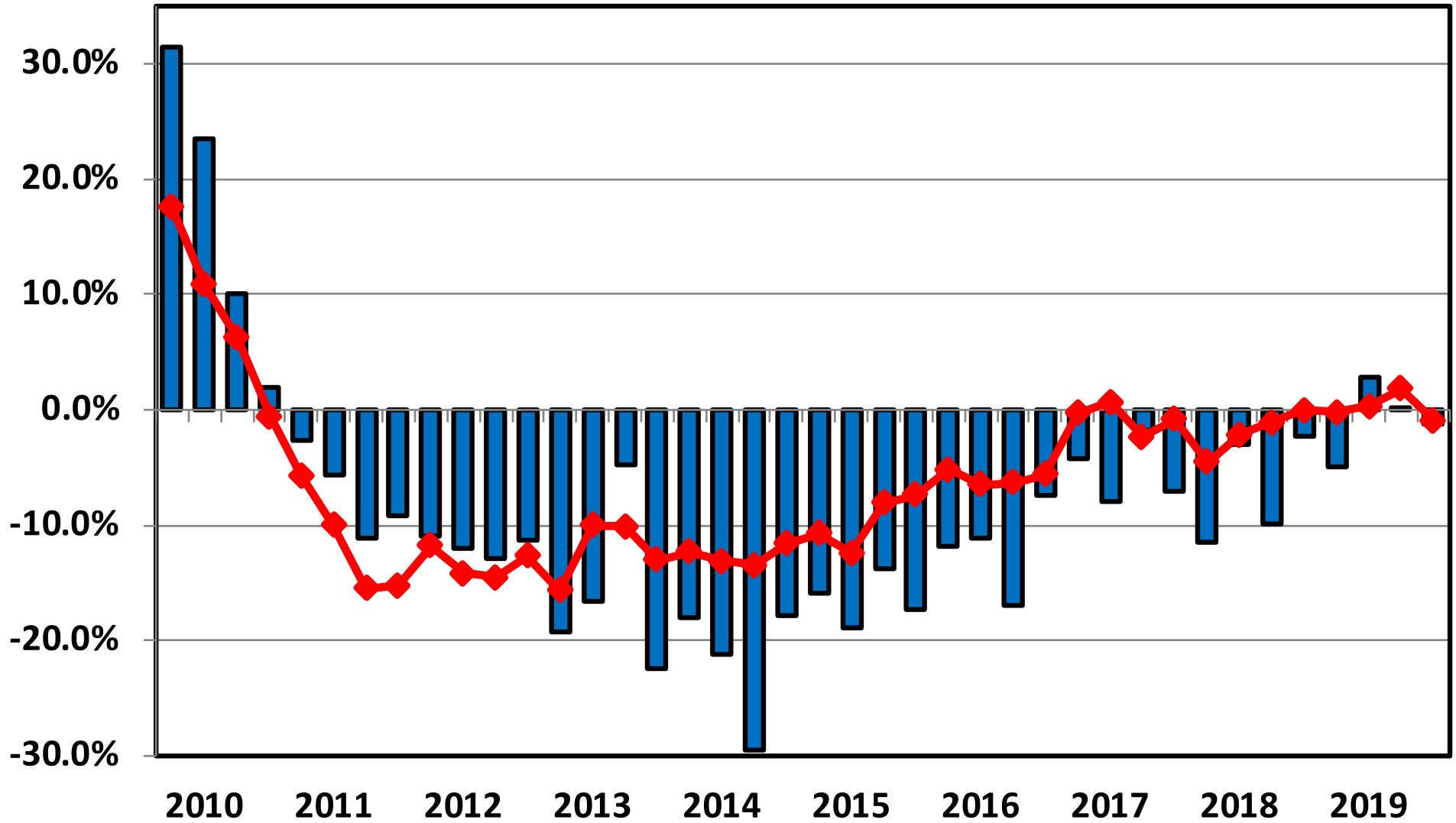


40.0% - 59.9%



60.0% or More

**Filing Trends By Quarter Colorado vs. National Average
(Percent Change From Same Quarter One Year Prior)**



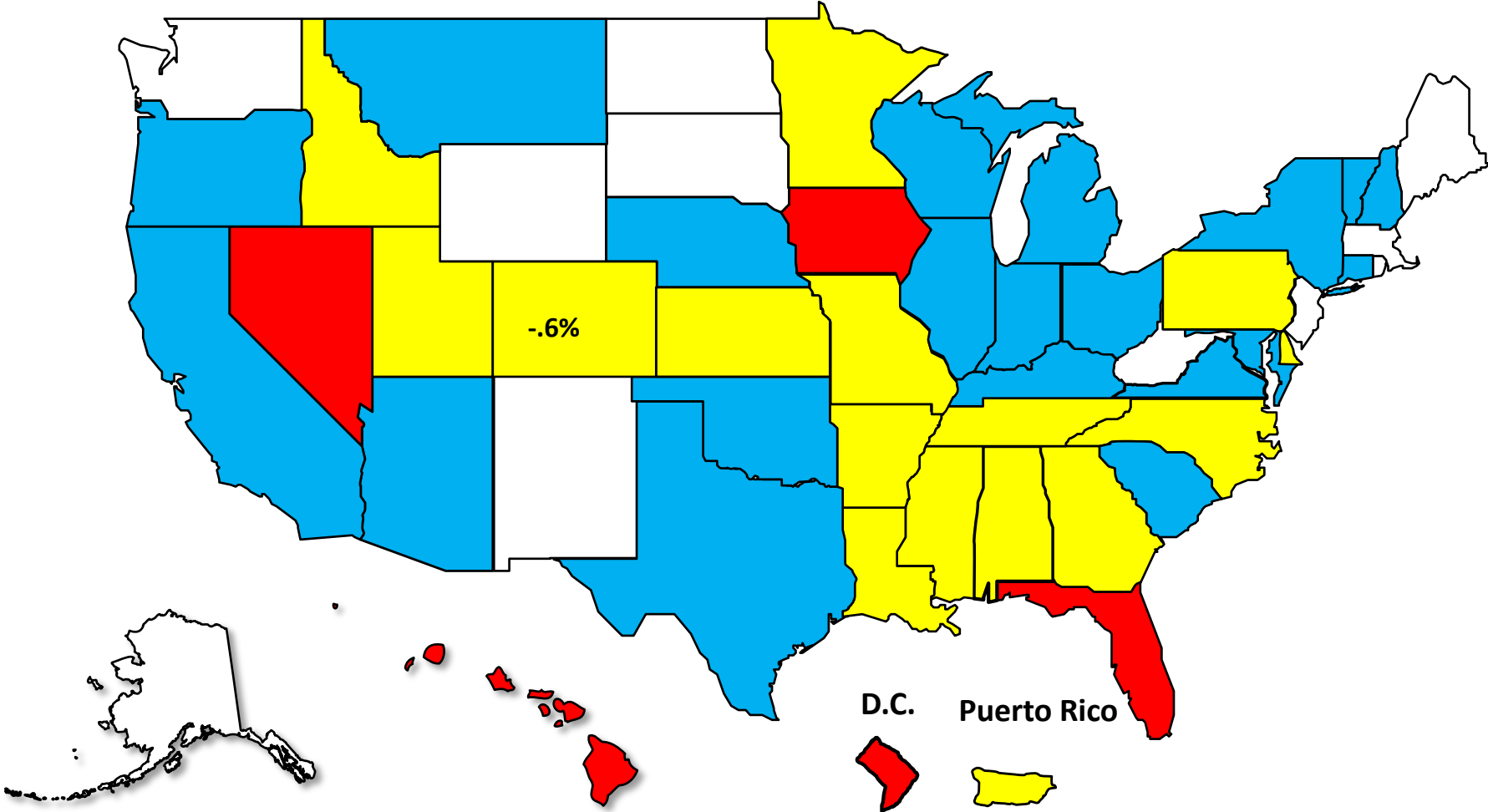
Colorado **National**

Bankruptcy Filing Trends

Calendar Year 2019 vs. 2018

National Average = .2% Increase

- Decline Over 5%
- Decline 0 - 5%
- Increase 0 - 5%
- Increase Over 5%





AMERICAN
BANKRUPTCY
INSTITUTE

www.abi.org