

Bankruptcy Filing Trends in Maryland



Prepared by: **The American Bankruptcy Institute**

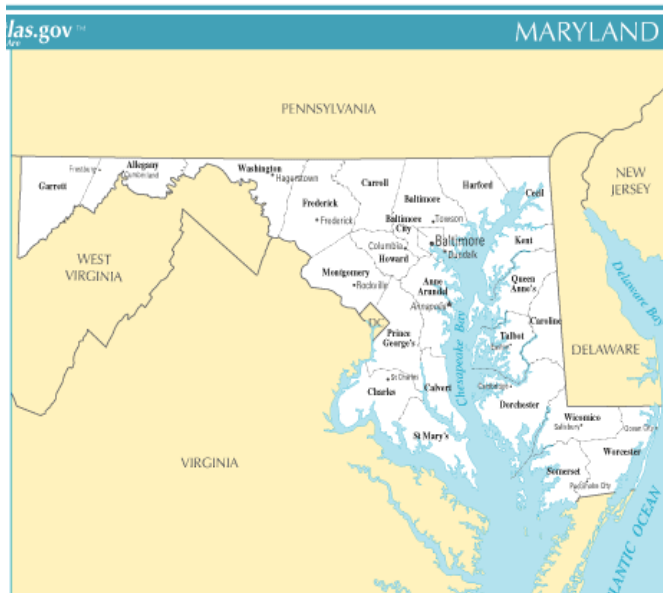
<http://www.abi.org/>



AMERICAN
BANKRUPTCY
INSTITUTE

Updated
February 2020

Maryland



State at a Glance

	Maryland	National
Population (7/1/2019)	6,045,680	328,239,523
- Change since 2010	4.7%	6.3%
- Foreign Born	15.1%	13.5%
Size (Square Miles)	9,707	3,531,905
Median Household Income	\$81,868	\$60,293
Persons per Household	2.67	2.63
Per Capita Income	\$40,517	\$32,621
Median Home Value	\$305,500	\$204,900
Homeownership Rate	66.8%	63.8%
High School Graduate (or Higher)	90.0%	87.7%
College Graduate (or Higher)	39.6%	31.5%
Disabled	7.5%	8.6%
No Health Insurance	6.9%	10.0%
In Poverty	9.3%	11.8%
Source: U.S. Census Bureau January 2020		

Prepared by: The American Bankruptcy Institute

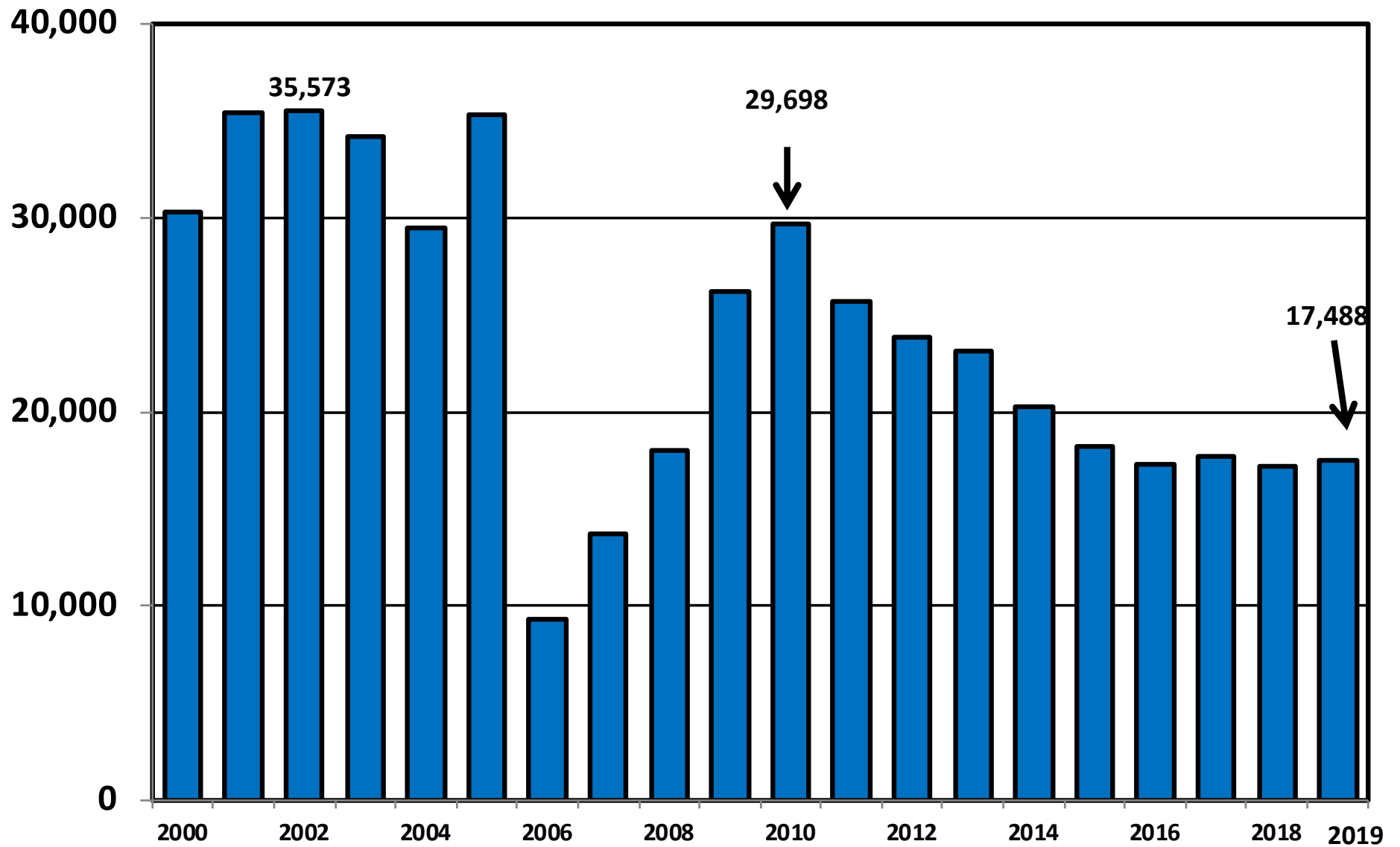
<http://www.abi.org>

Bankruptcy Filings in Maryland**Calendar Years 2000 - 2019**

Year	Total	Chapter 7	Chapter 11	Chapter 13	Other Cases
2000	30,335	20,572	166	9,597	0
2001	35,388	24,356	174	10,858	0
2002	35,573	23,447	412	11,711	3
2003	34,231	22,853	194	11,182	2
2004	29,467	20,384	112	8,971	0
2005	35,345	27,895	131	7,319	0
2006	9,349	4,663	95	4,591	0
2007	13,733	7,119	150	6,463	1
2008	18,005	11,834	226	5,944	1
2009	26,264	19,592	280	6,390	2
2010	29,698	21,959	276	7,456	7
2011	25,662	20,418	183	5,056	5
2012	23,814	19,027	175	4,609	3
2013	23,118	17,304	176	5,635	3
2014	20,323	14,672	158	5,491	2
2015	18,247	12,658	171	5,412	6
2016	17,341	11,521	132	5,687	1
2017	17,716	11,942	128	5,643	3
2018	17,255	11,361	118	5,770	6
2019	17,488	11,129	106	6,248	5

Total Bankruptcy Cases Filed in Maryland

Calendar Years 2000 - 2019



Total Filings Relative to Population 2000 - 2019



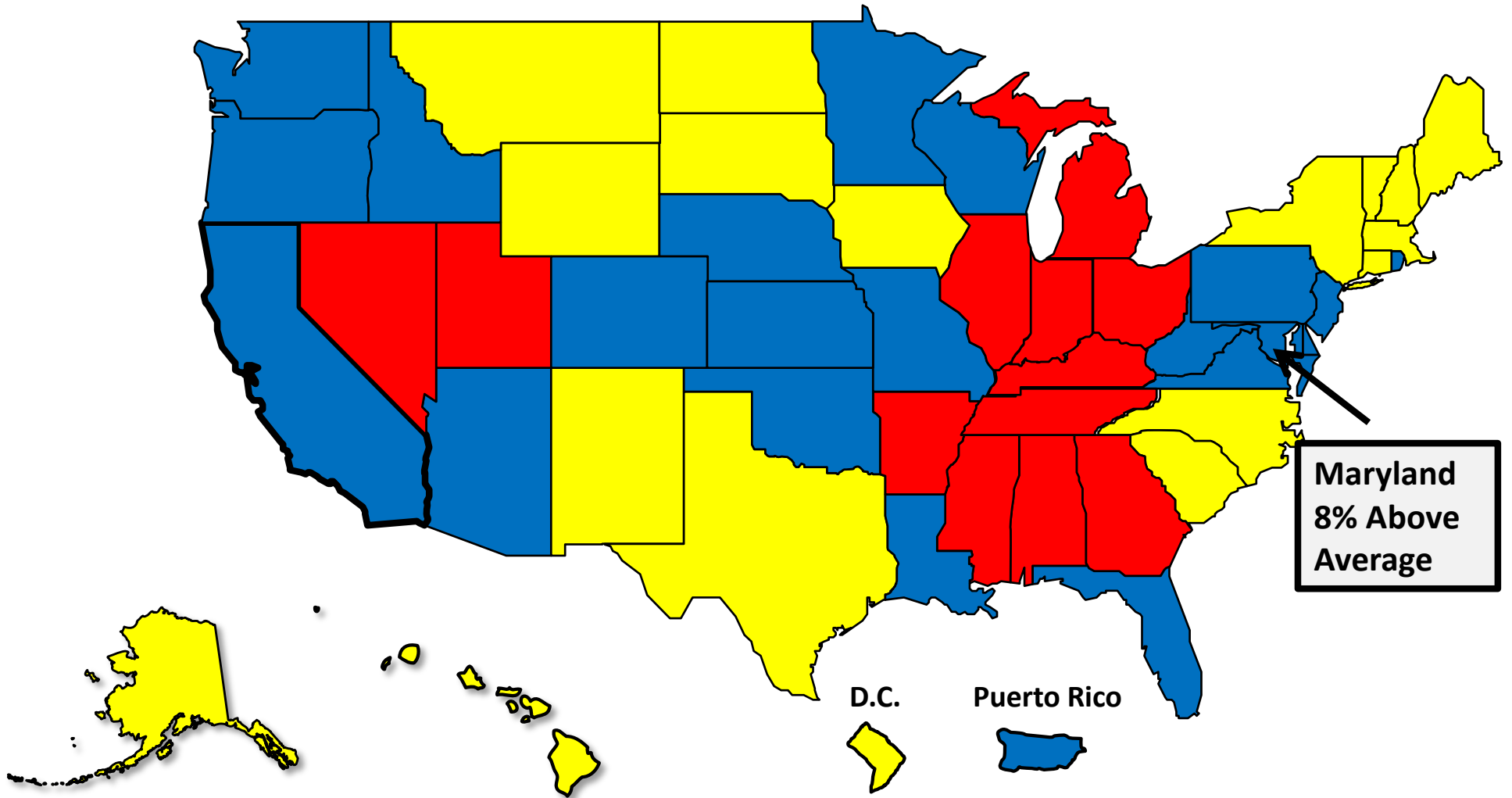
More than 25%
Above Average



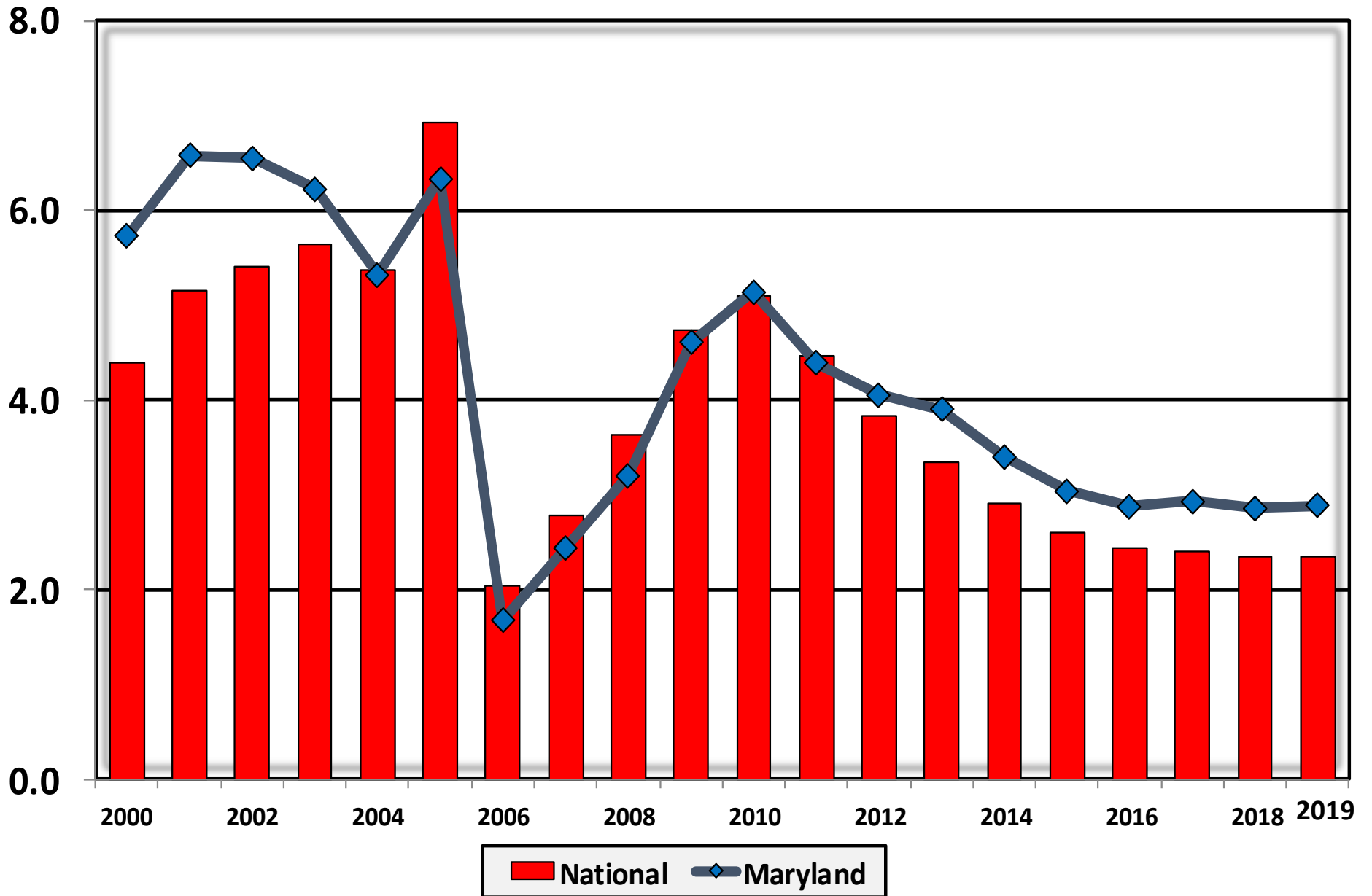
Within 25%
of Average



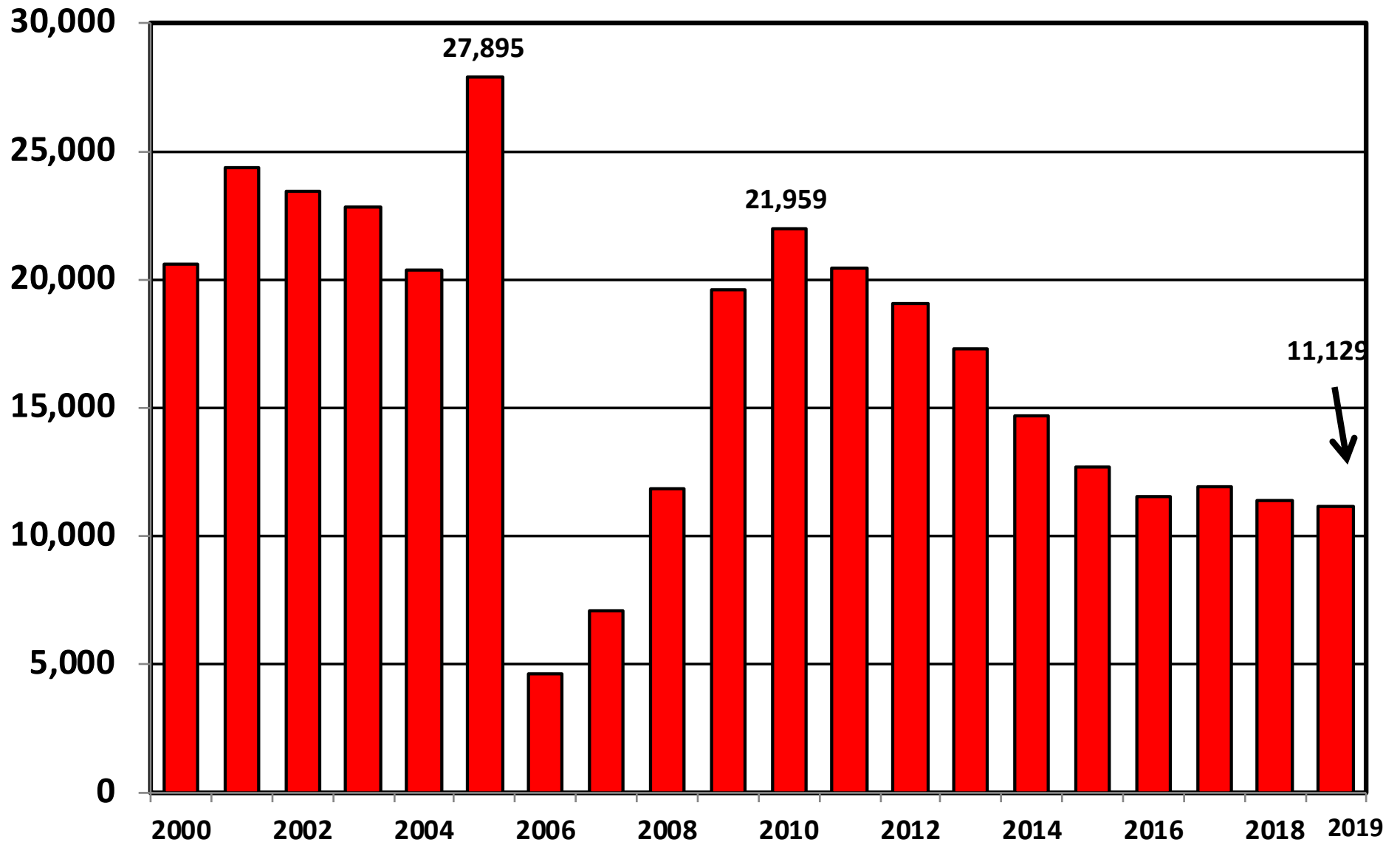
More than 25%
Below Average



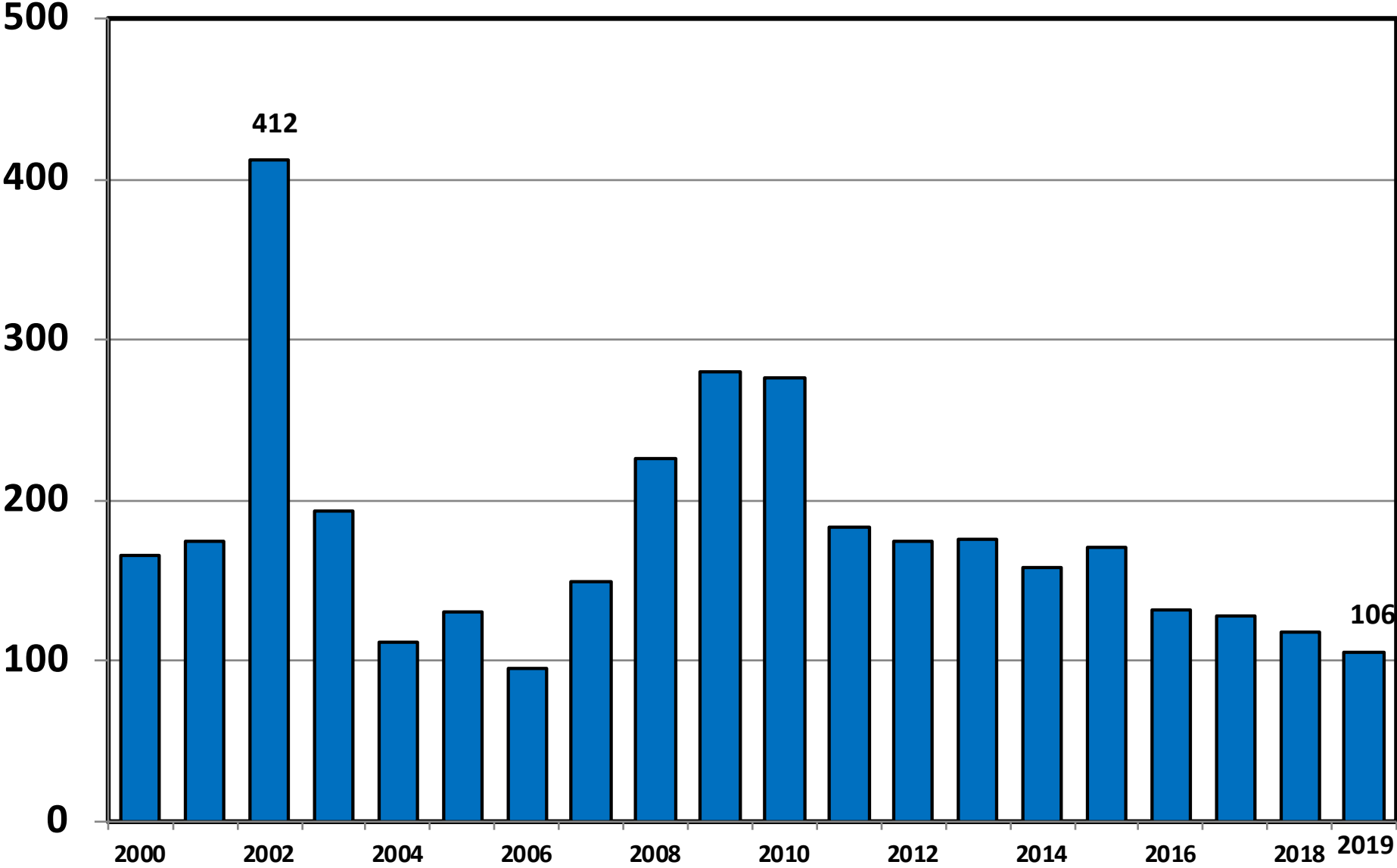
Bankruptcy Filings per 1,000 Population Maryland vs. National Average 2000 - 2019



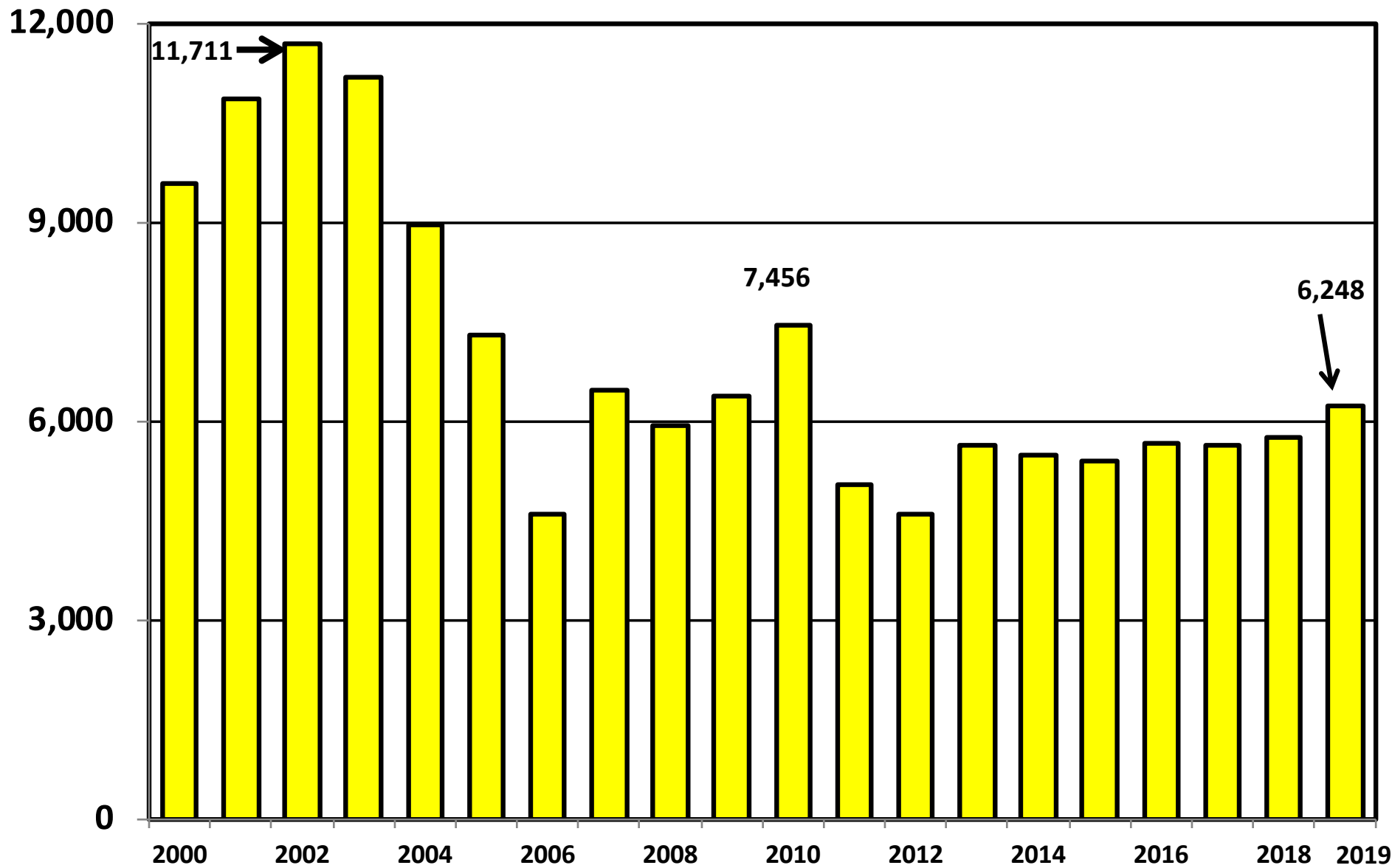
Chapter 7 Cases Filed In Maryland Calendar Years 2000 - 2019



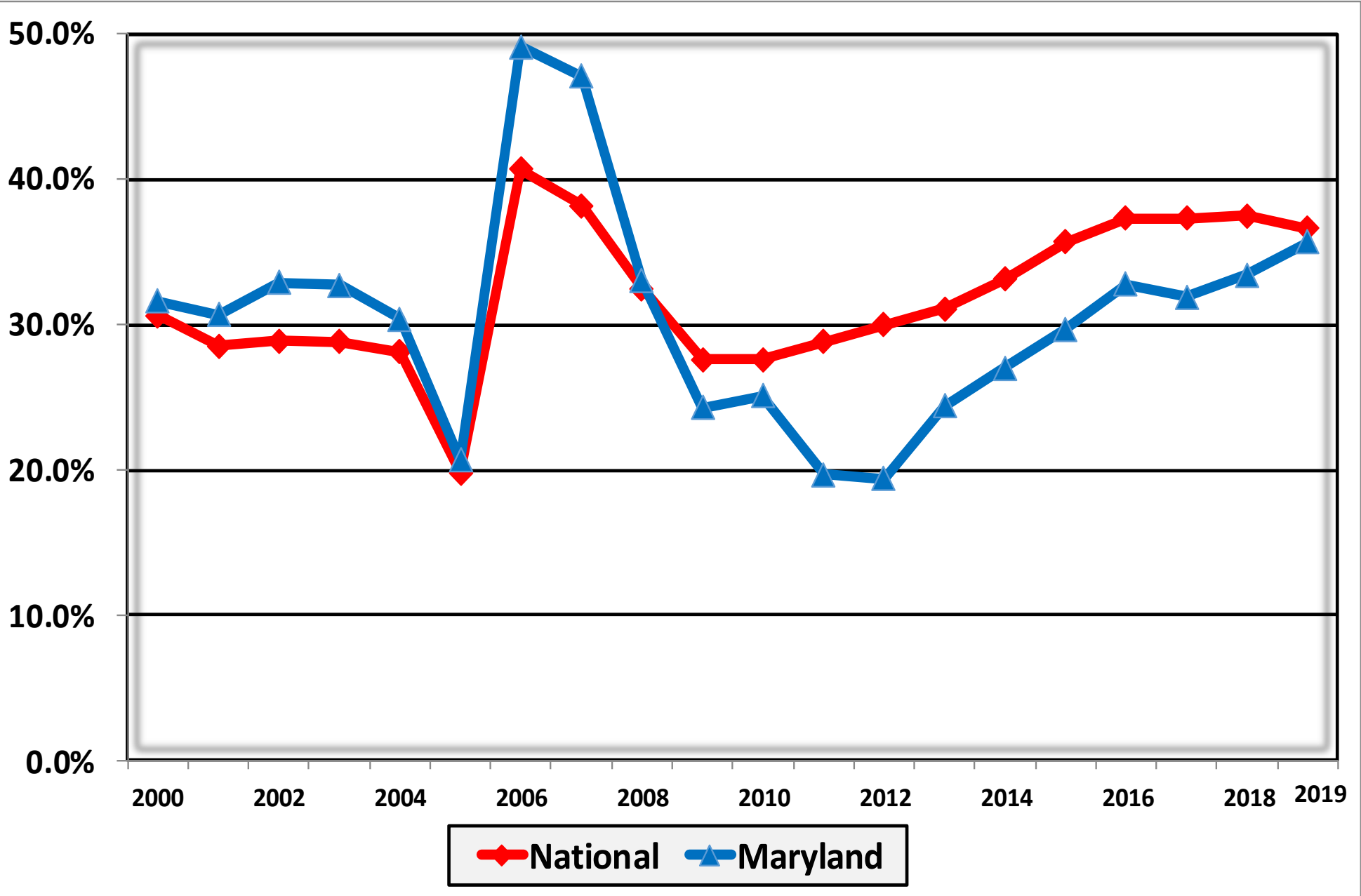
Chapter 11 Cases Filed in Maryland 2000 - 2019



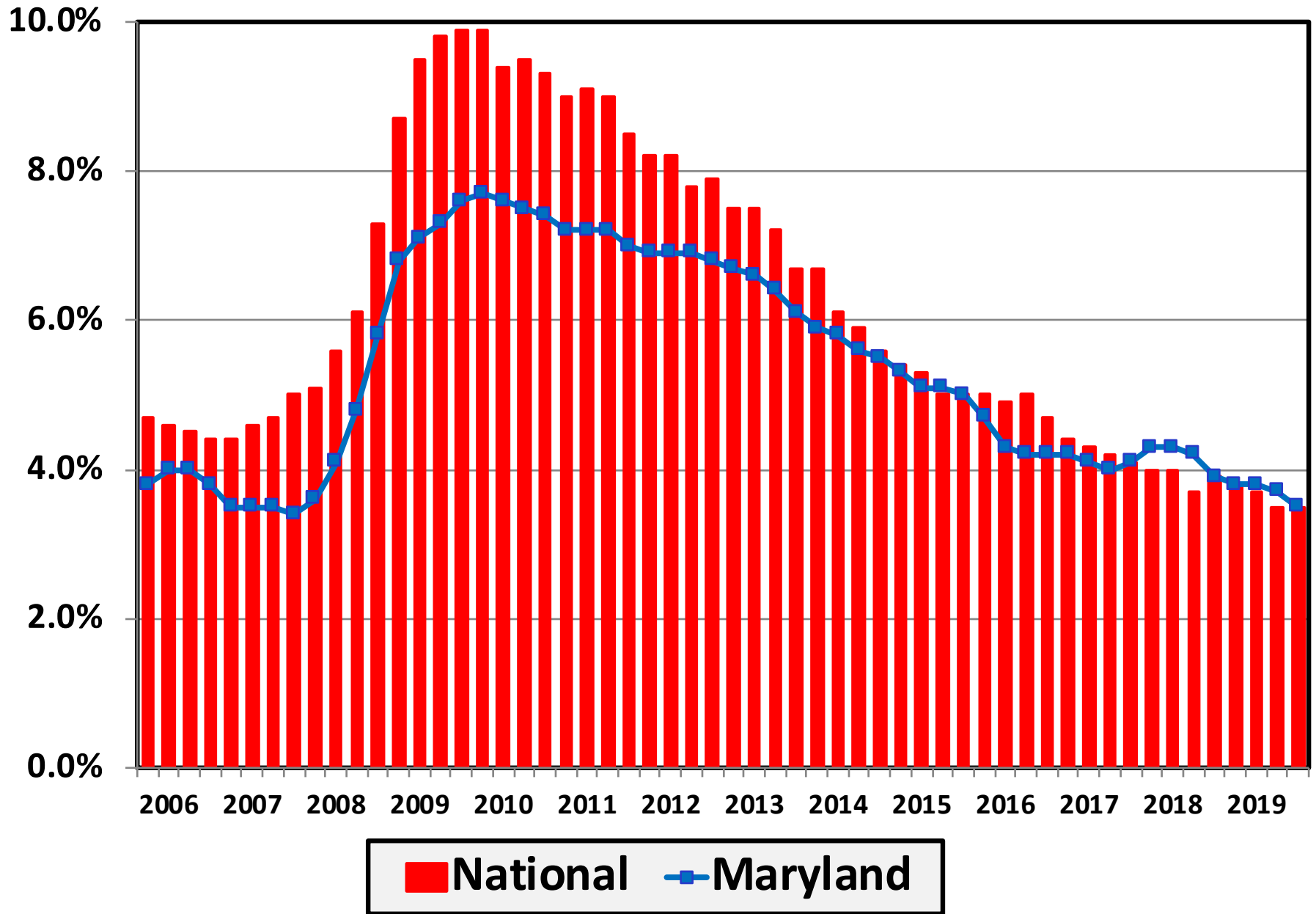
Chapter 13 Cases Filed in Maryland 2000 - 2019



**Percent of Cases Filed as Chapter 13
Calendar Years 2000 - 2019**



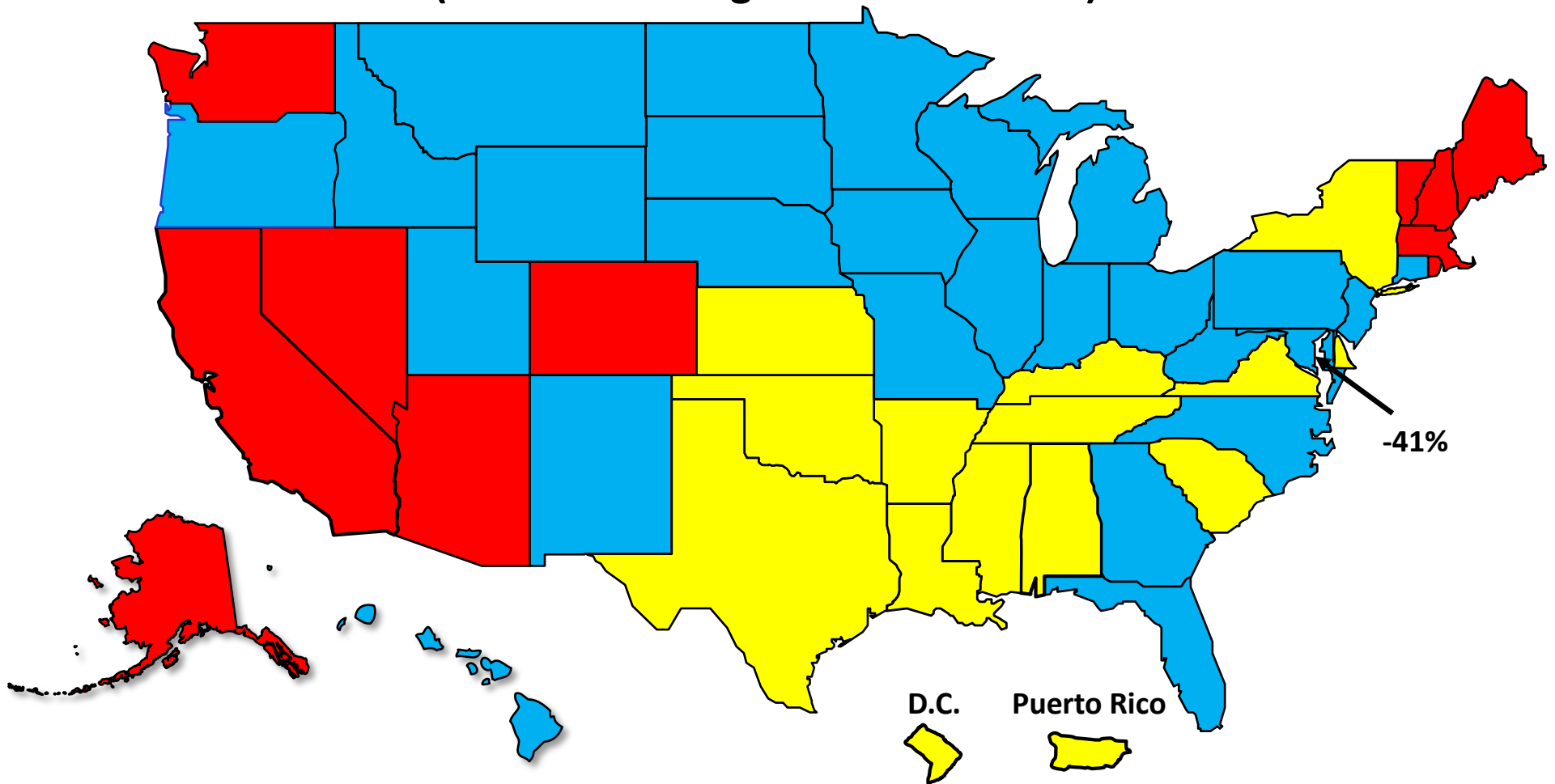
Unemployment Rate By Quarter 2006 - 2019



Source: Bureau of Labor Statistics

Percent Change in Total Filings Calendar Year 2019 Compared to 2010

(National Average = 51% Decrease)



Amount of Decrease



Under 40%

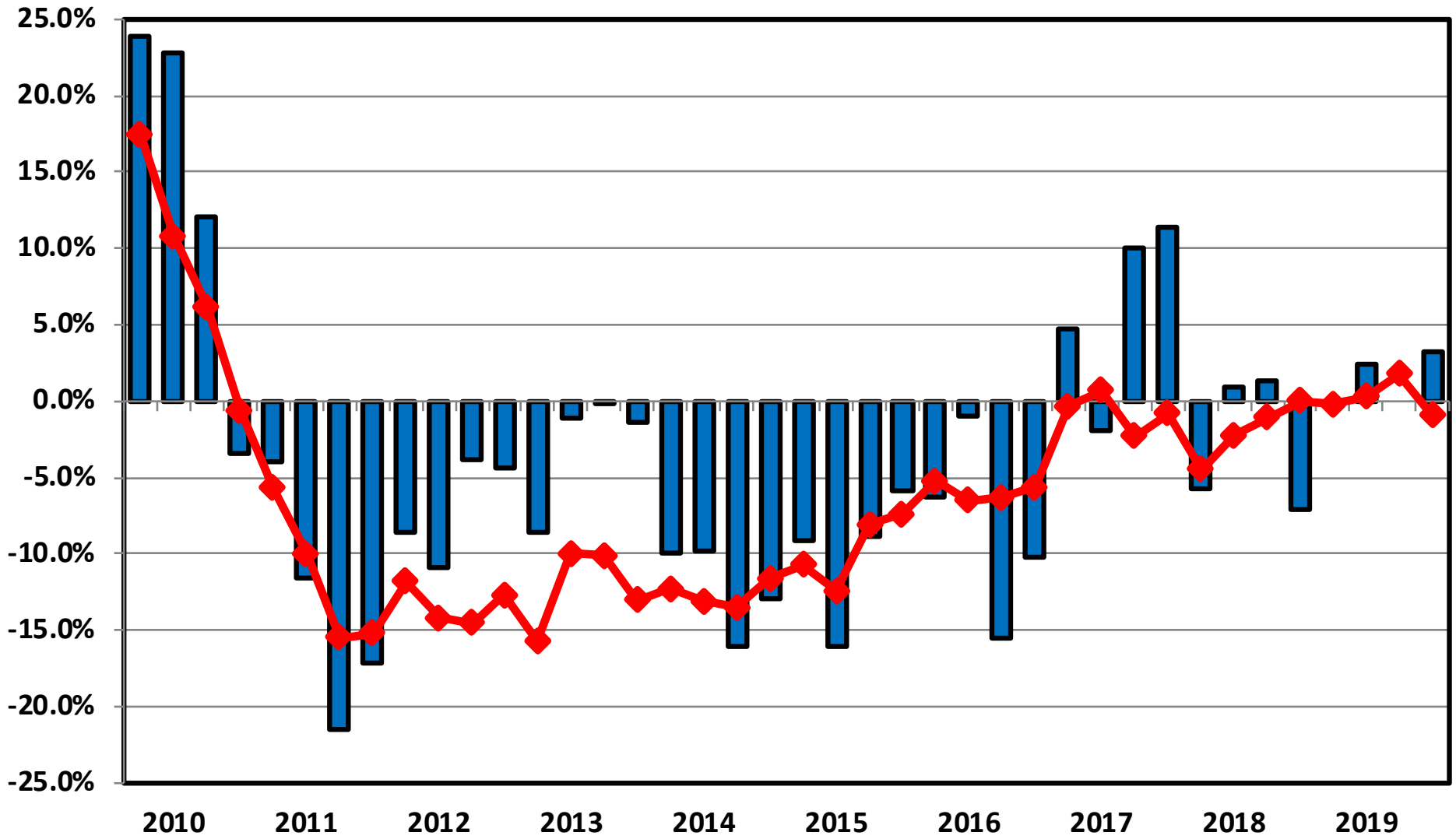


40.0% – 59.9%



60.0% or More

**Filing Trends By Quarter Maryland vs. National Average
(Percent Change From Same Quarter One Year Prior)**



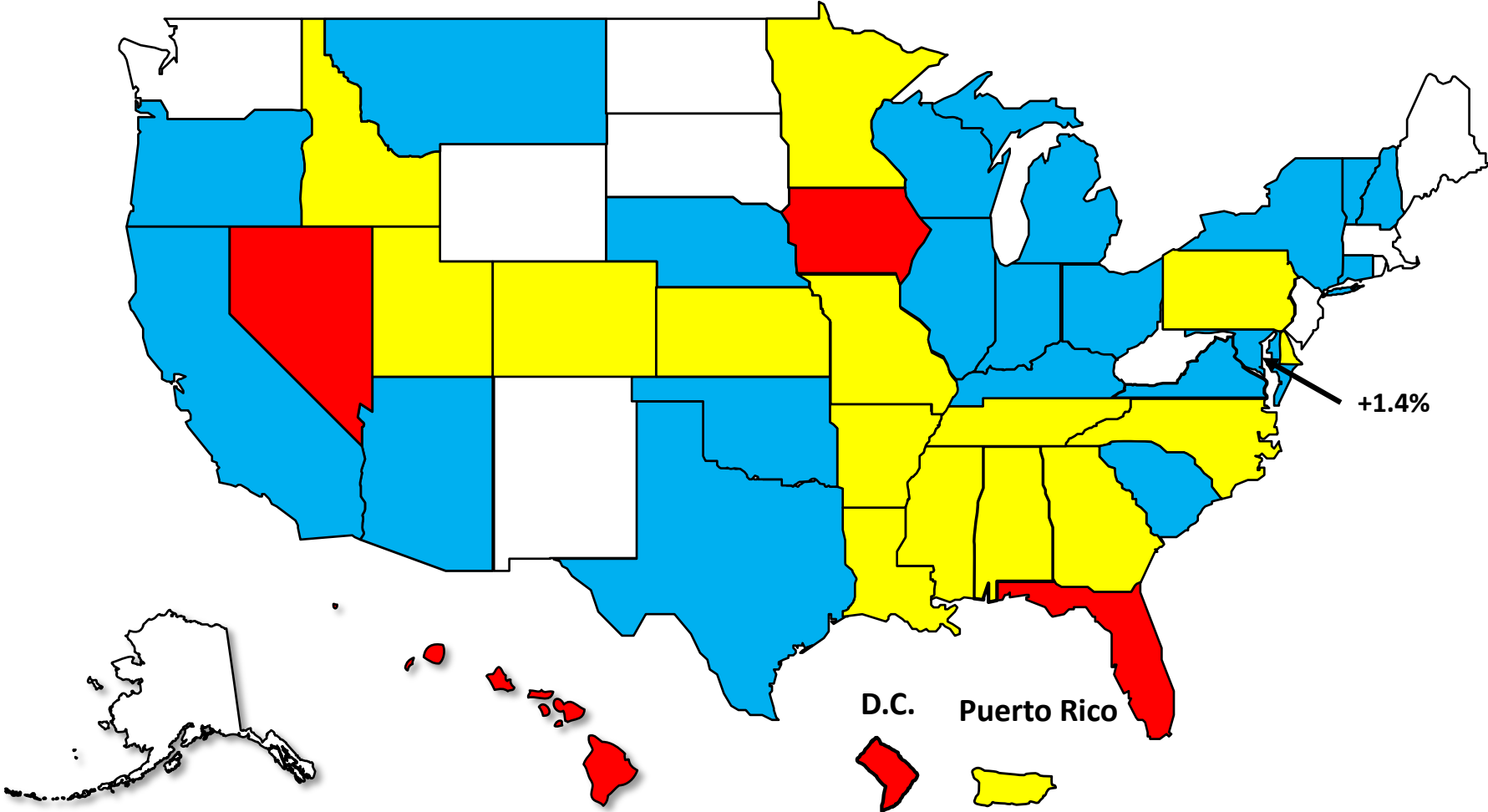
■ Maryland ◆ National

Bankruptcy Filing Trends

Calendar Year 2019 vs. 2018

National Average = .2% Increase

- Decline Over 5%
- Decline 0 - 5%
- Increase 0 - 5%
- Increase Over 5%





AMERICAN
BANKRUPTCY
INSTITUTE

www.abi.org