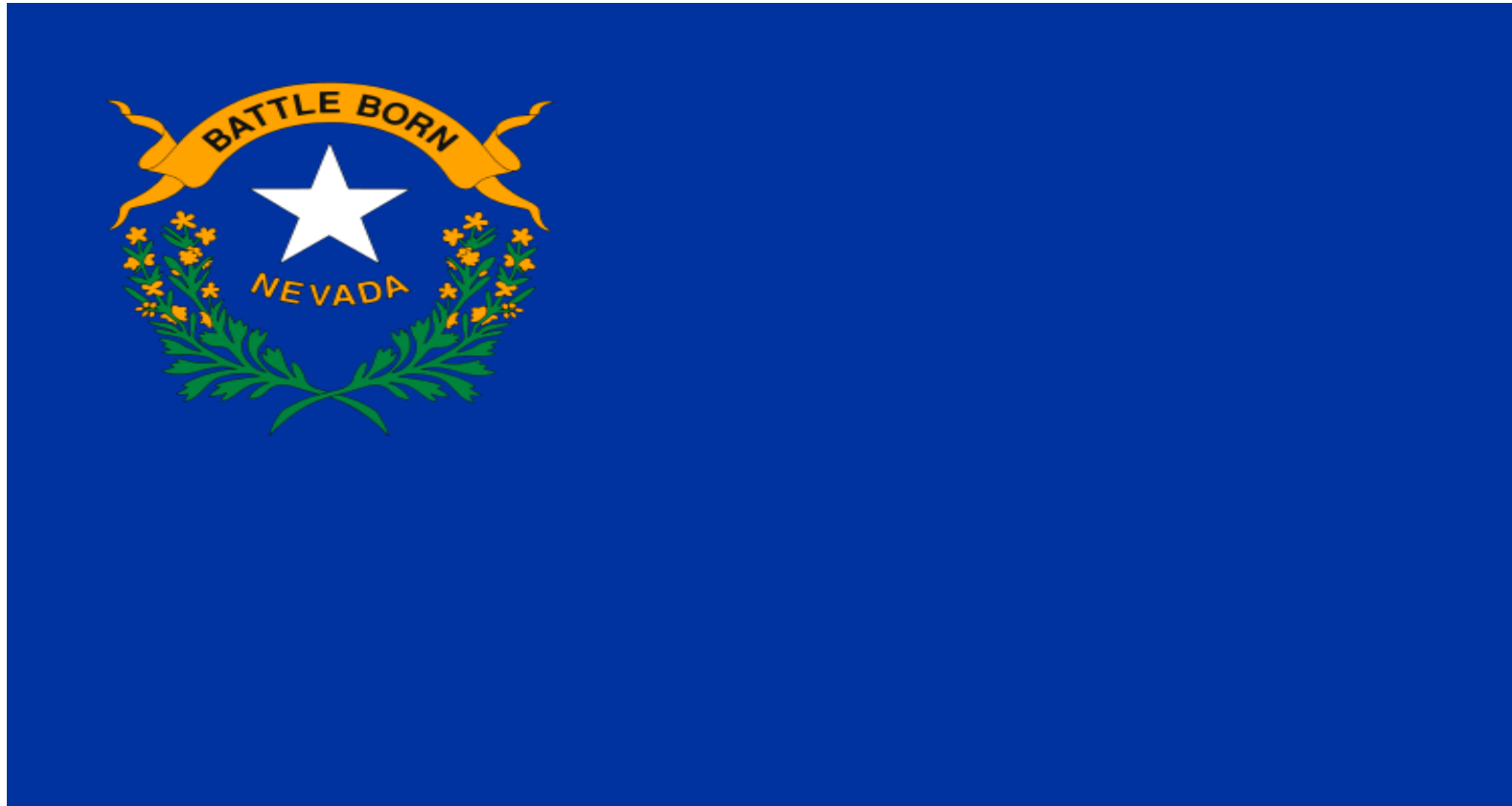


Bankruptcy Filing Trends in Nevada



Prepared by: **The American Bankruptcy Institute**
<http://www.abi.org/>



AMERICAN
BANKRUPTCY
INSTITUTE

Updated
February 2020

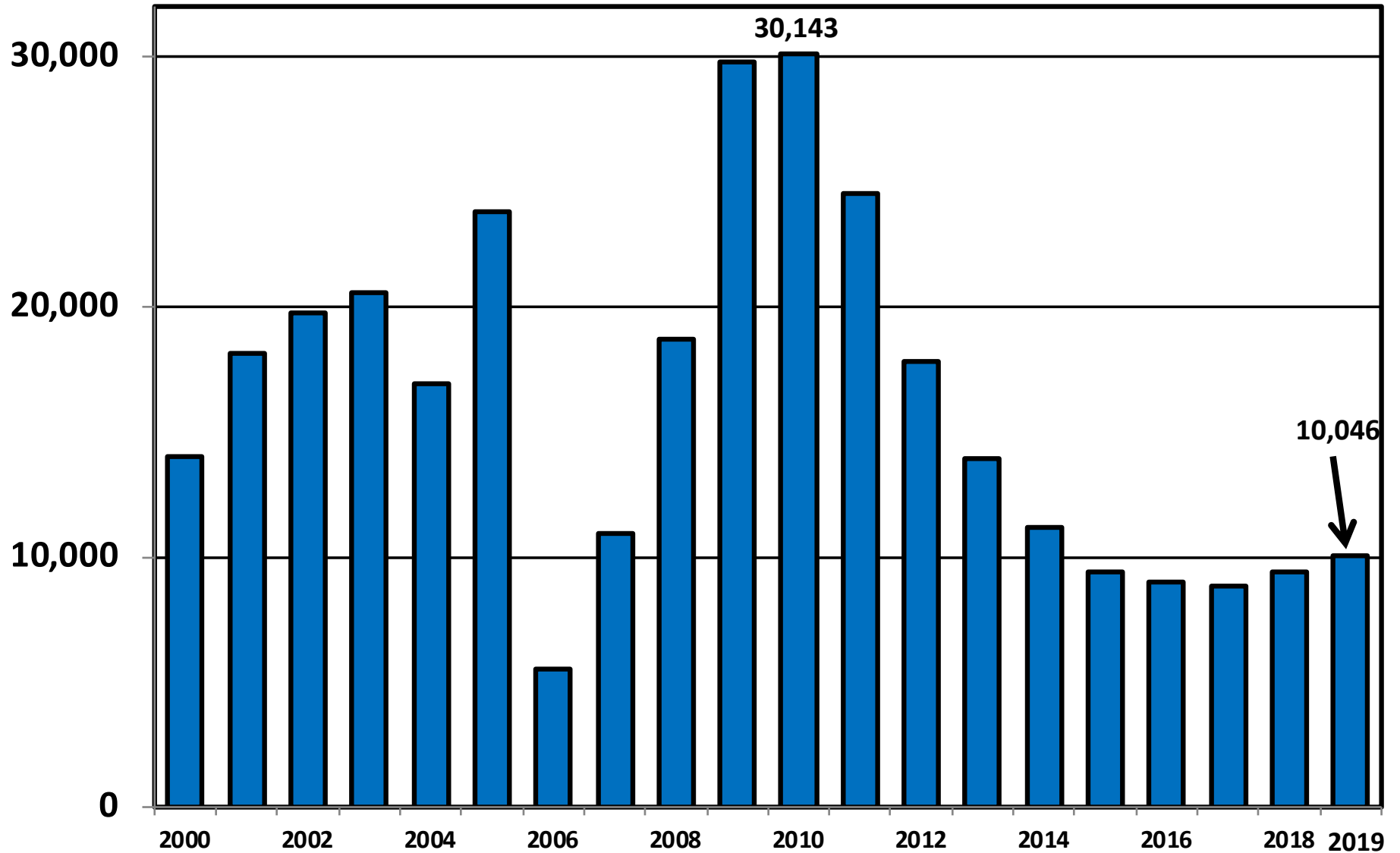
Nevada



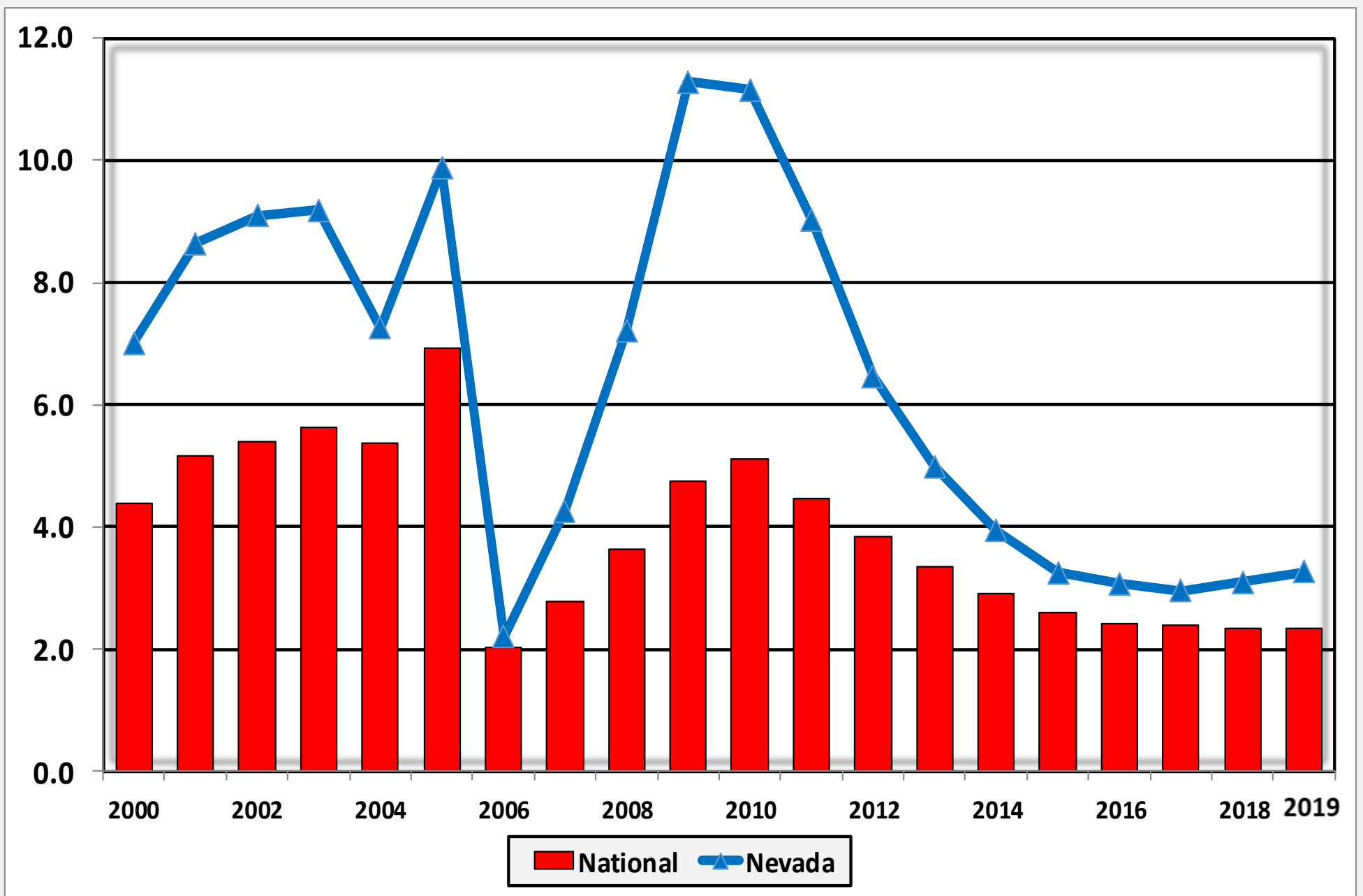
State at a Glance		
	Nevada	National
Population (7/1/2019)	3,080,156	328,239,523
- Change since 2010	14.1%	6.3%
- Foreign Born	19.4%	13.5%
Size (Square Miles)	109,781	3,531,905
Median Household Income	\$57,598	\$60,293
Persons per Household	2.68	2.63
Per Capita Income	\$29,961	\$32,621
Median Home Value	\$242,400	\$204,900
Homeownership Rate	55.8%	63.8%
High School Graduate (or Higher)	86.3%	87.7%
College Graduate (or Higher)	24.2%	31.5%
Disabled	8.9%	8.6%
No Health Insurance	13.0%	10.0%
In Poverty	12.9%	11.8%
Source: U.S. Census Bureau January 2020		

Bankruptcy Filings in Nevada					
Calendar Years 2000 - 2019					
Year	Total	Chapter 7	Chapter 11	Chapter 13	Other Cases
2000	14,010	10,219	137	3,652	2
2001	18,102	13,429	230	4,442	1
2002	19,736	14,615	316	4,803	2
2003	20,561	15,371	137	5,052	1
2004	16,912	13,265	100	3,547	0
2005	23,786	20,059	117	3,610	0
2006	5,517	3,552	93	1,872	0
2007	10,953	6,740	107	4,106	0
2008	18,716	13,039	185	5,489	3
2009	29,808	21,519	445	7,844	0
2010	30,143	22,581	463	7,097	2
2011	24,519	18,842	479	5,194	4
2012	17,823	14,197	345	3,279	2
2013	13,927	11,316	277	2,332	2
2014	11,184	9,108	210	1,859	7
2015	9,392	7,370	195	1,827	0
2016	9,017	6,864	216	1,931	6
2017	8,830	6,758	190	1,881	1
2018	9,404	7,479	161	1,764	0
2019	10,046	8,031	128	1,887	0

District of Nevada Total Bankruptcy Cases Filed 2000 - 2019



**Bankruptcy Filings per 1,000 Population
Nevada vs. National Average 2000 - 2019**



Total Filings Relative to Population 2000 - 2019



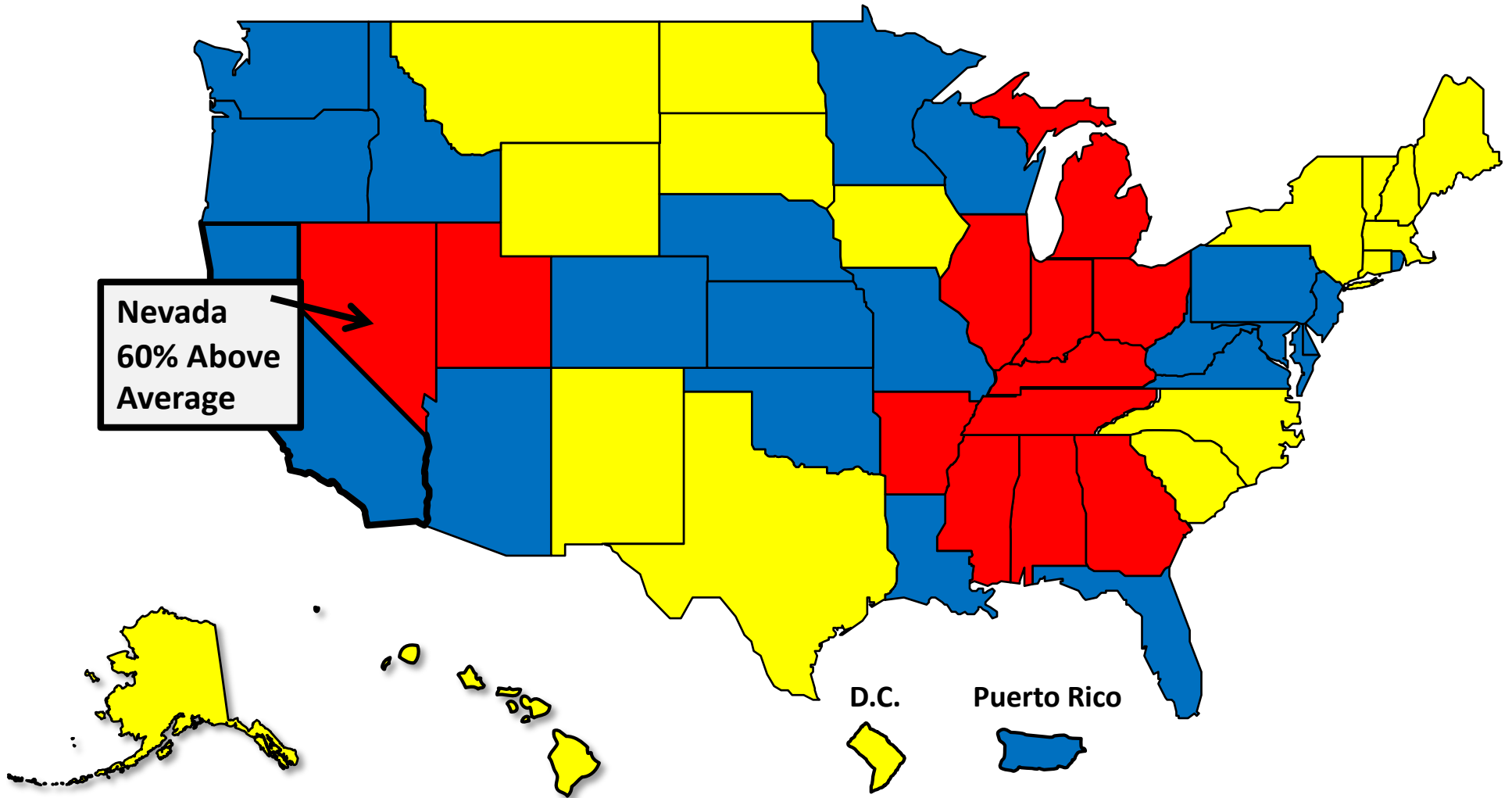
More than 25%
Above Average



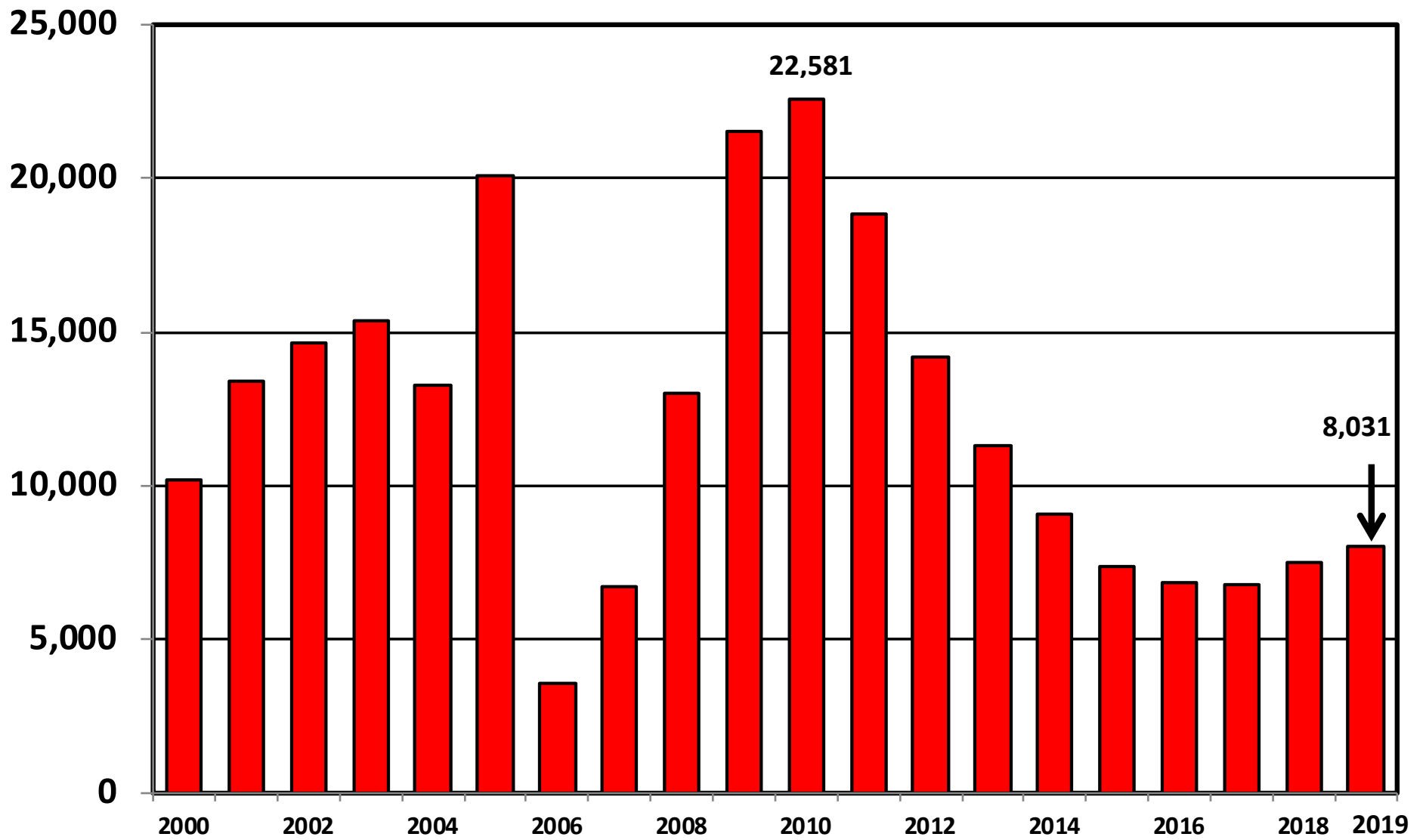
Within 25%
of Average



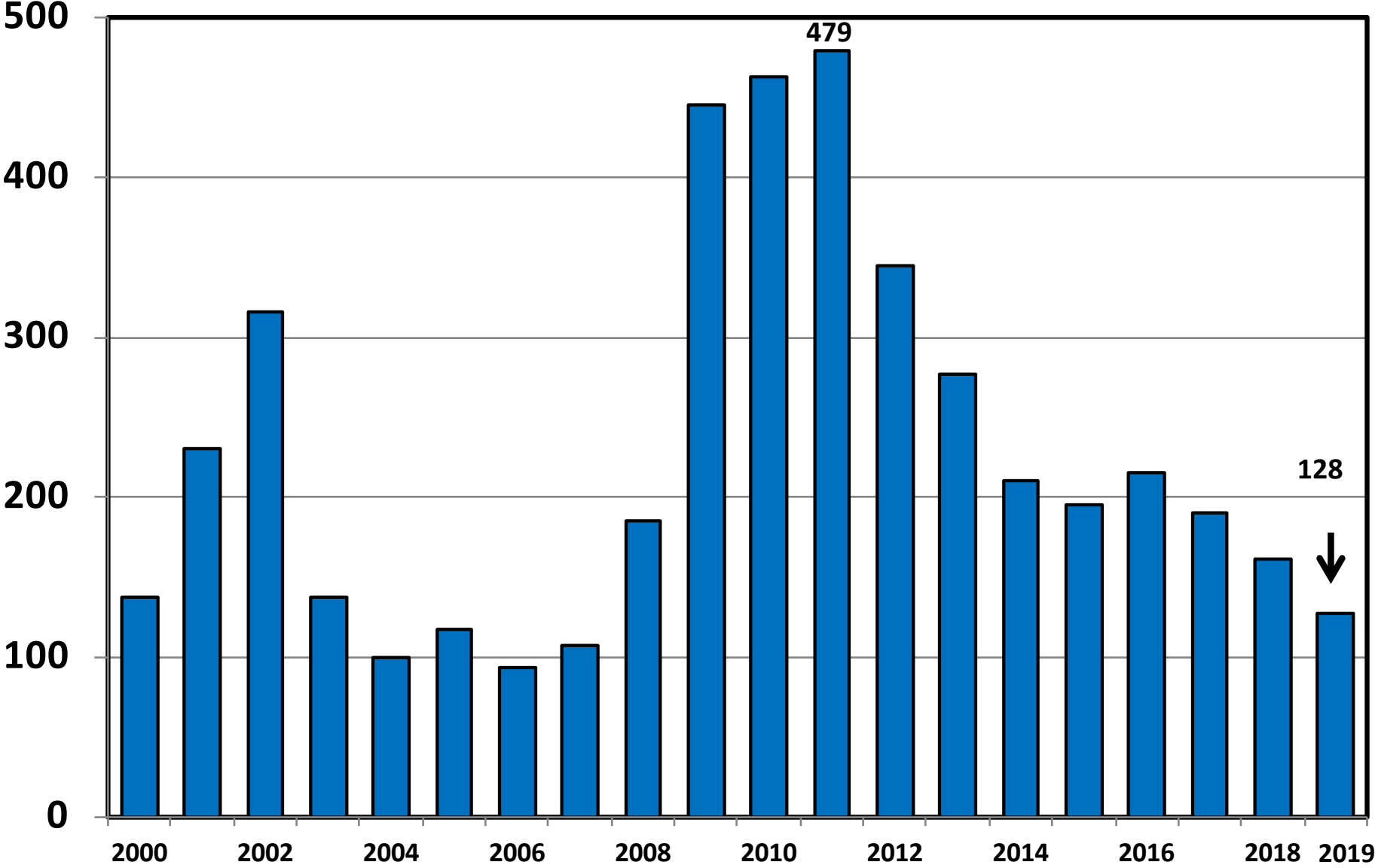
More than 25%
Below Average



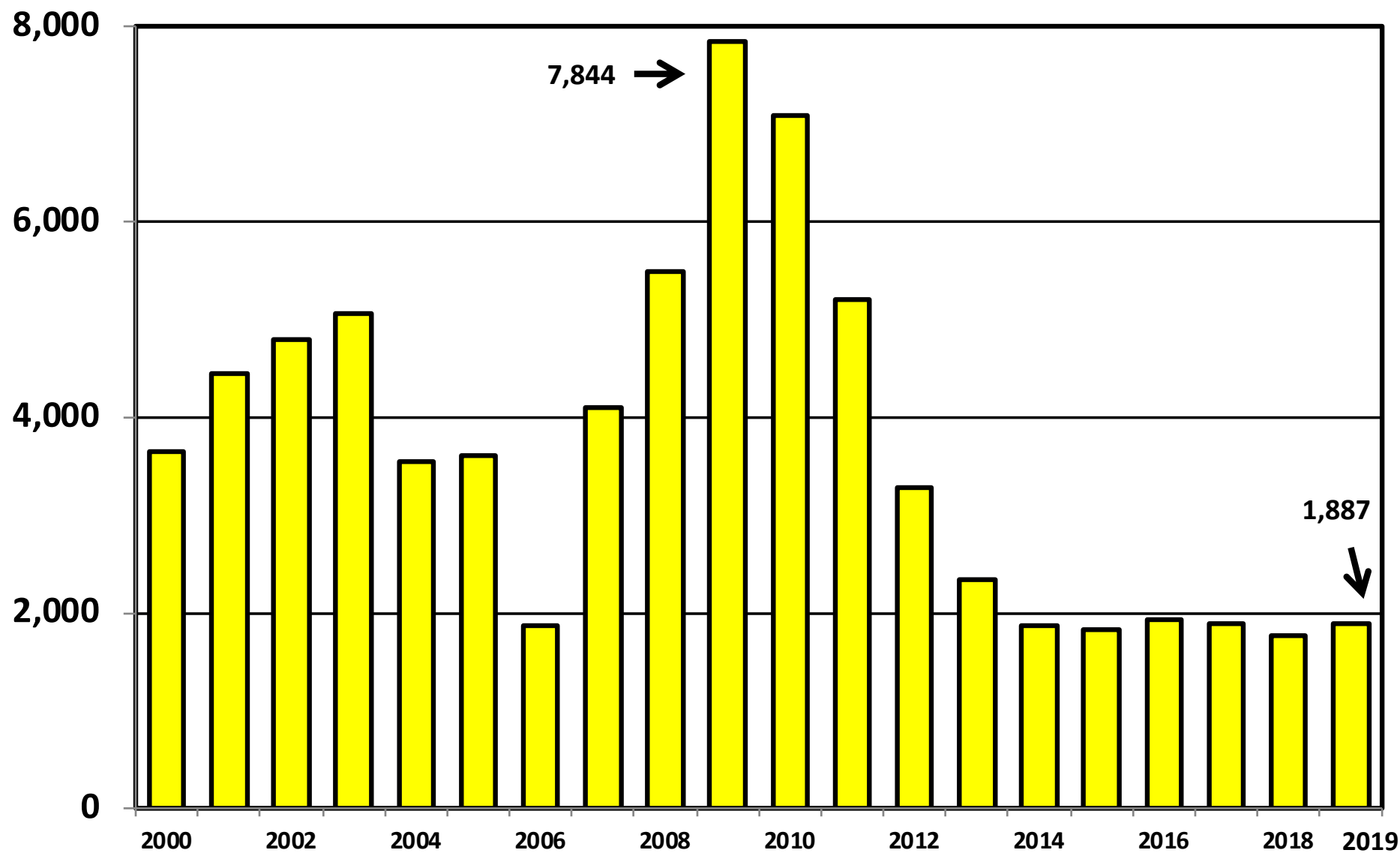
District of Nevada Chapter 7 Cases Filed 2000 - 2019



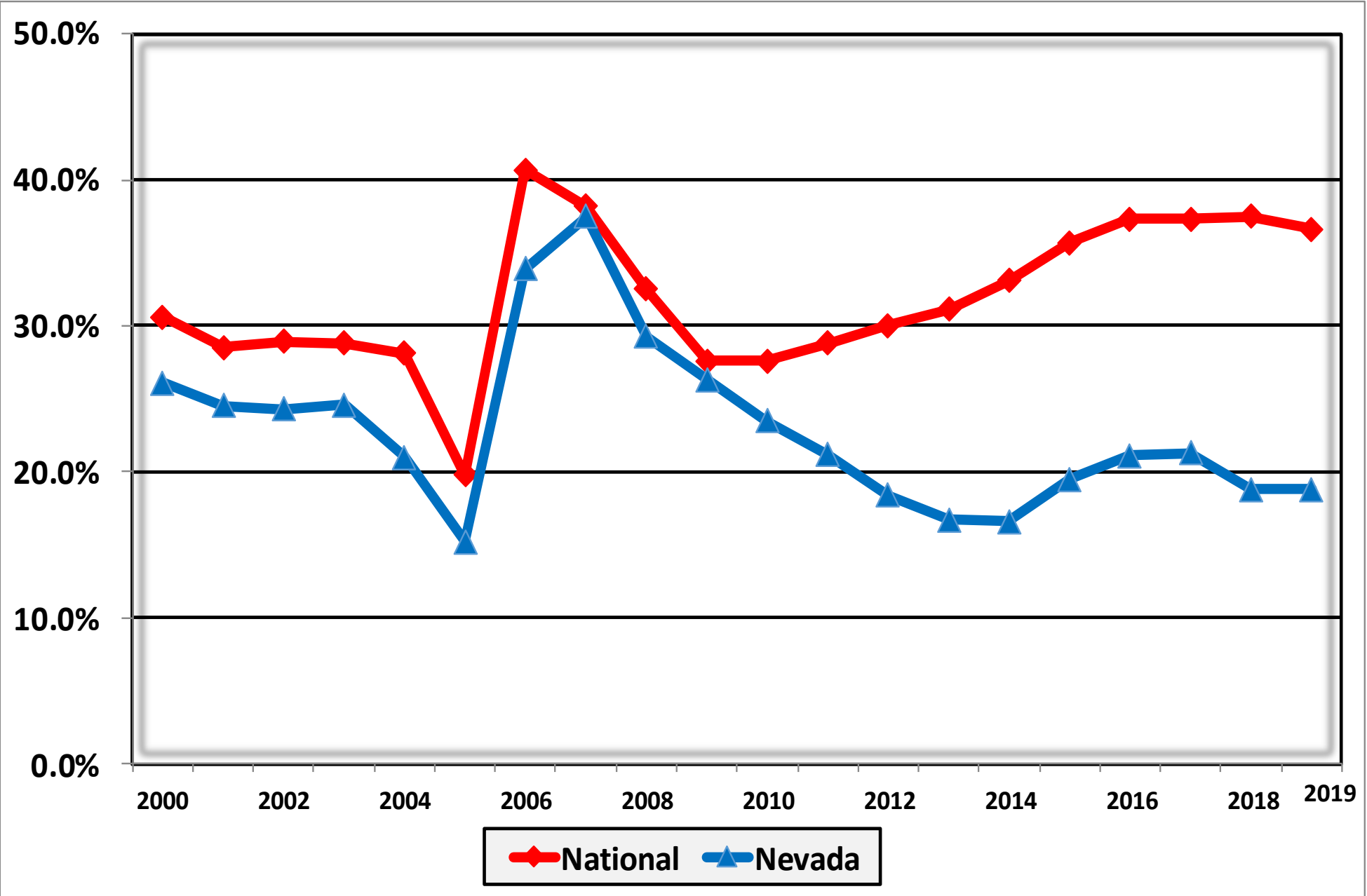
Chapter 11 Cases Filed in Nevada 2000 - 2019



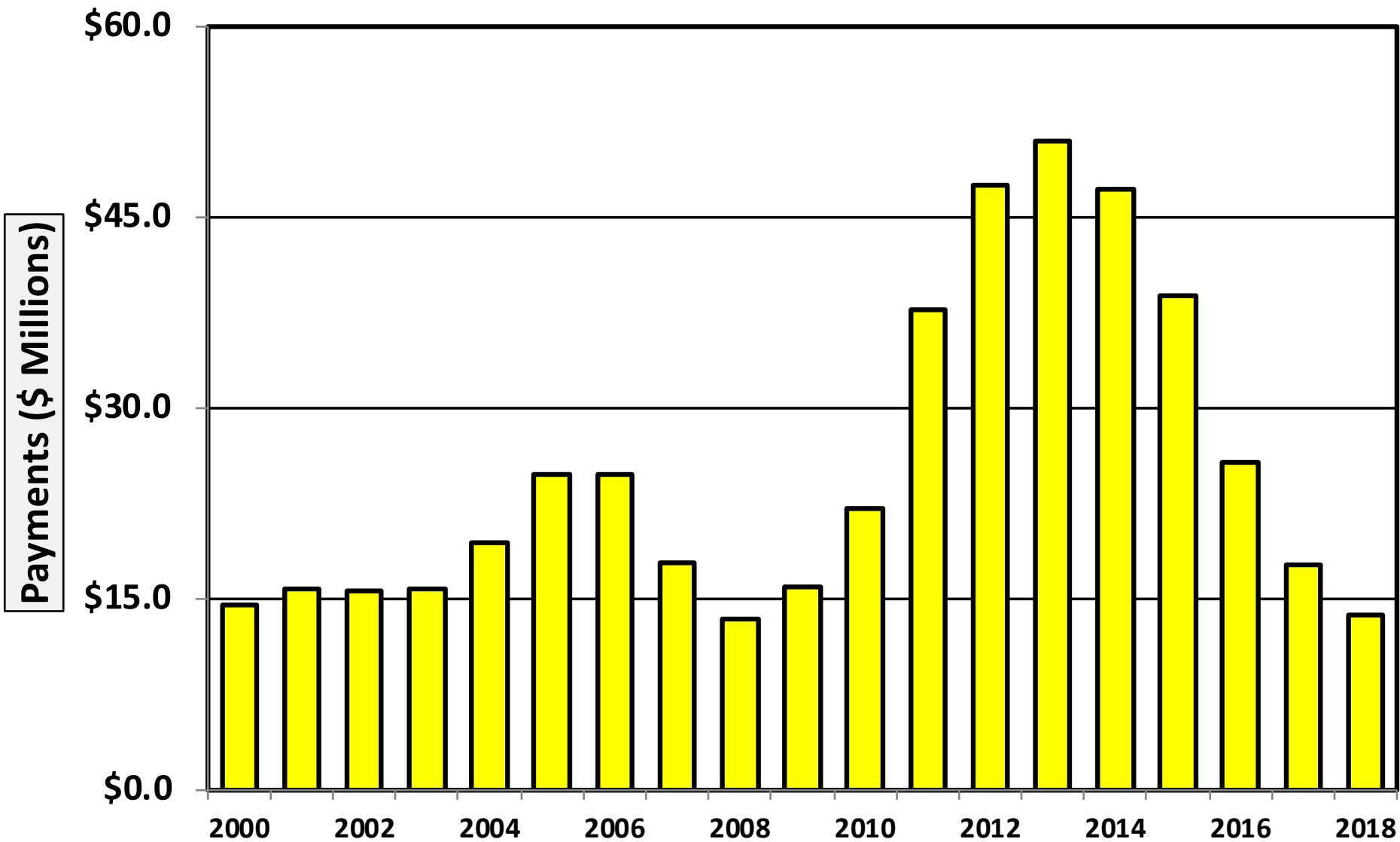
District of Nevada Chapter 13 Cases Filed 2000 - 2019



**Percent of Cases Filed as Chapter 13
Calendar Years 2000 - 2019**

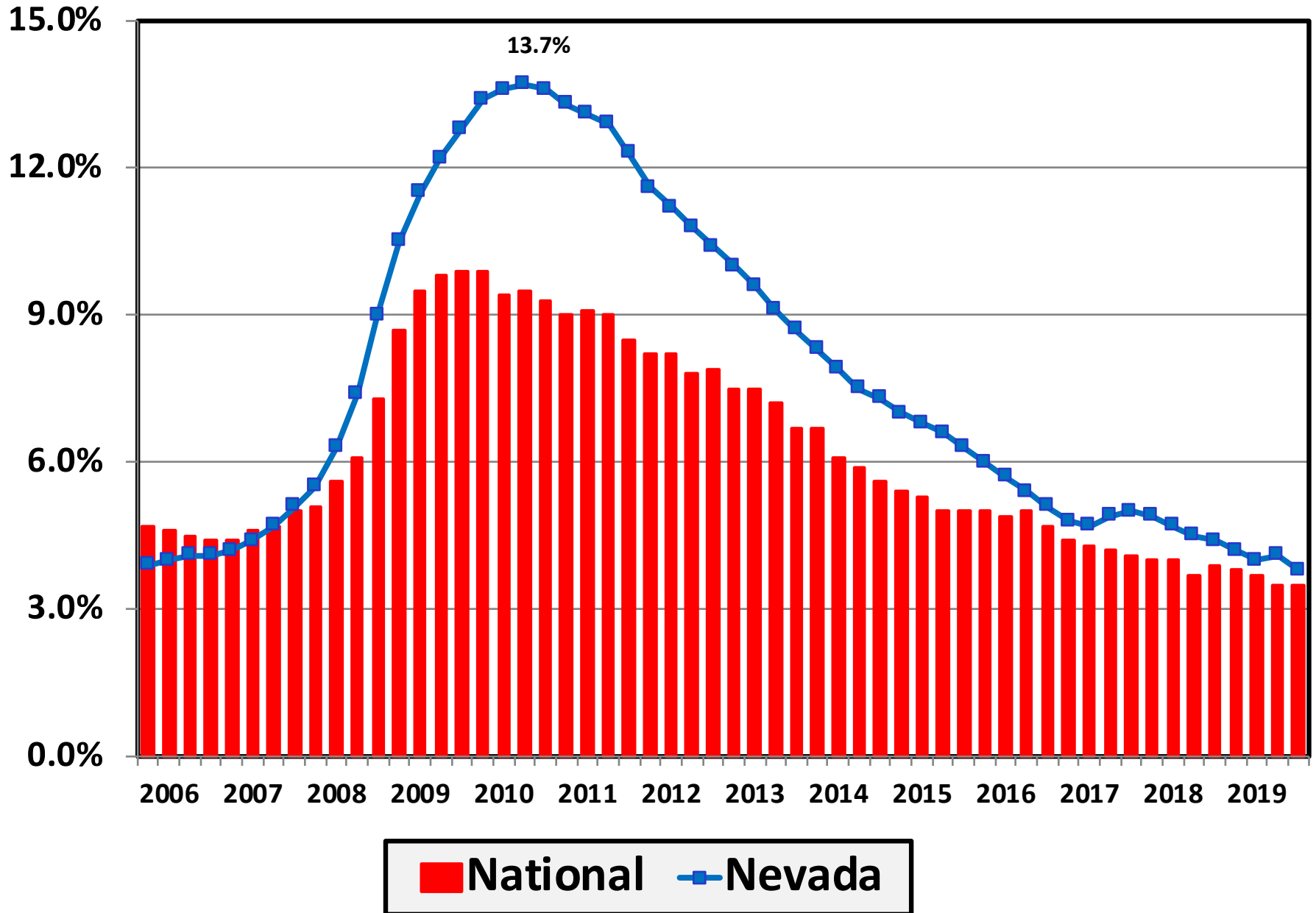


Chapter 13 Cases in Nevada
Amount (in Millions) Paid to Unsecured Creditors
Fiscal Years 2000 - 2018



Source: Executive Office for United States Trustees

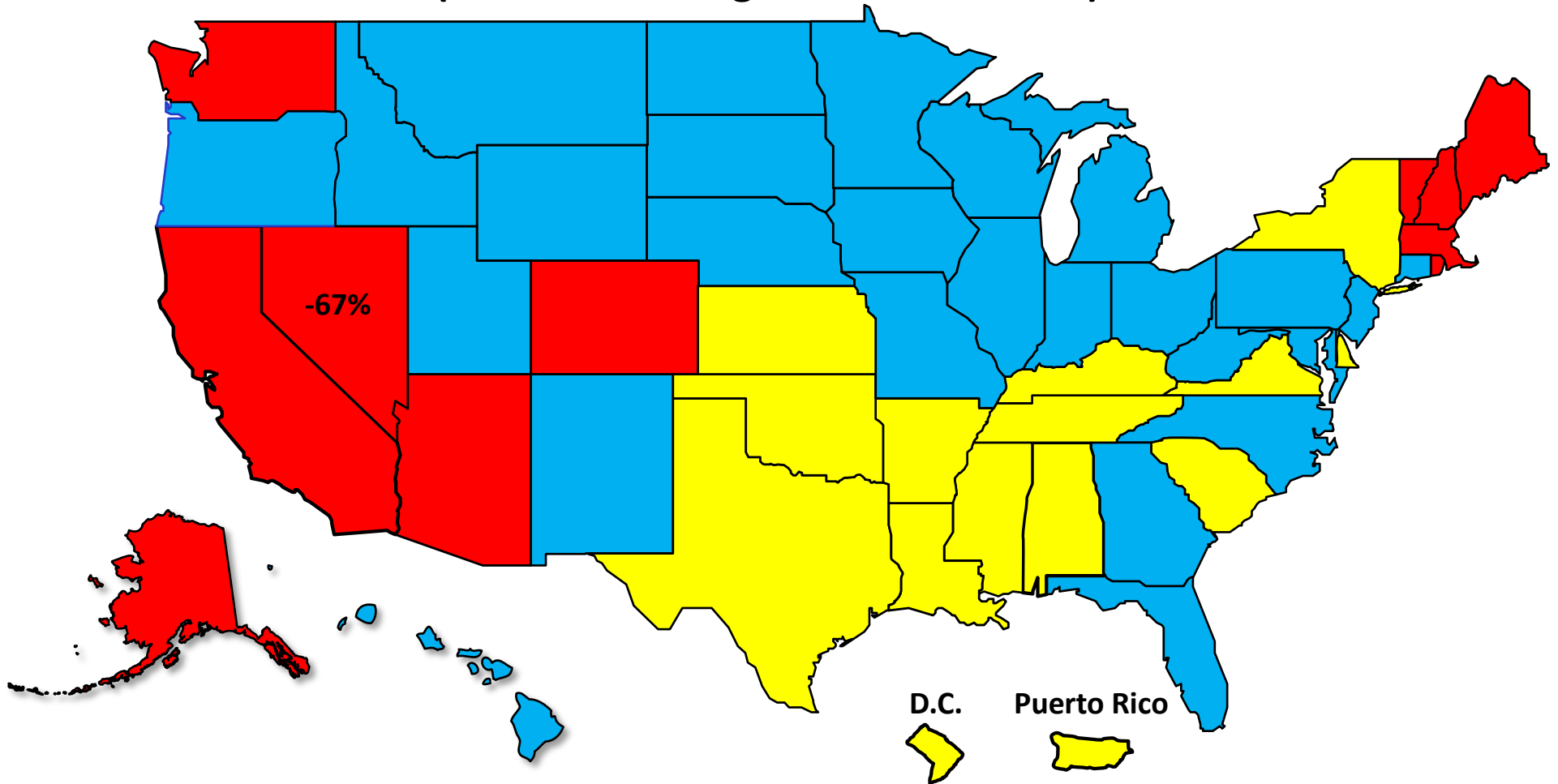
Unemployment Rate By Quarter 2006 - 2019



Source: Bureau of Labor Statistics

Percent Change in Total Filings Calendar Year 2019 Compared to 2010

(National Average = 51% Decrease)



Amount of Decrease



Under 40%

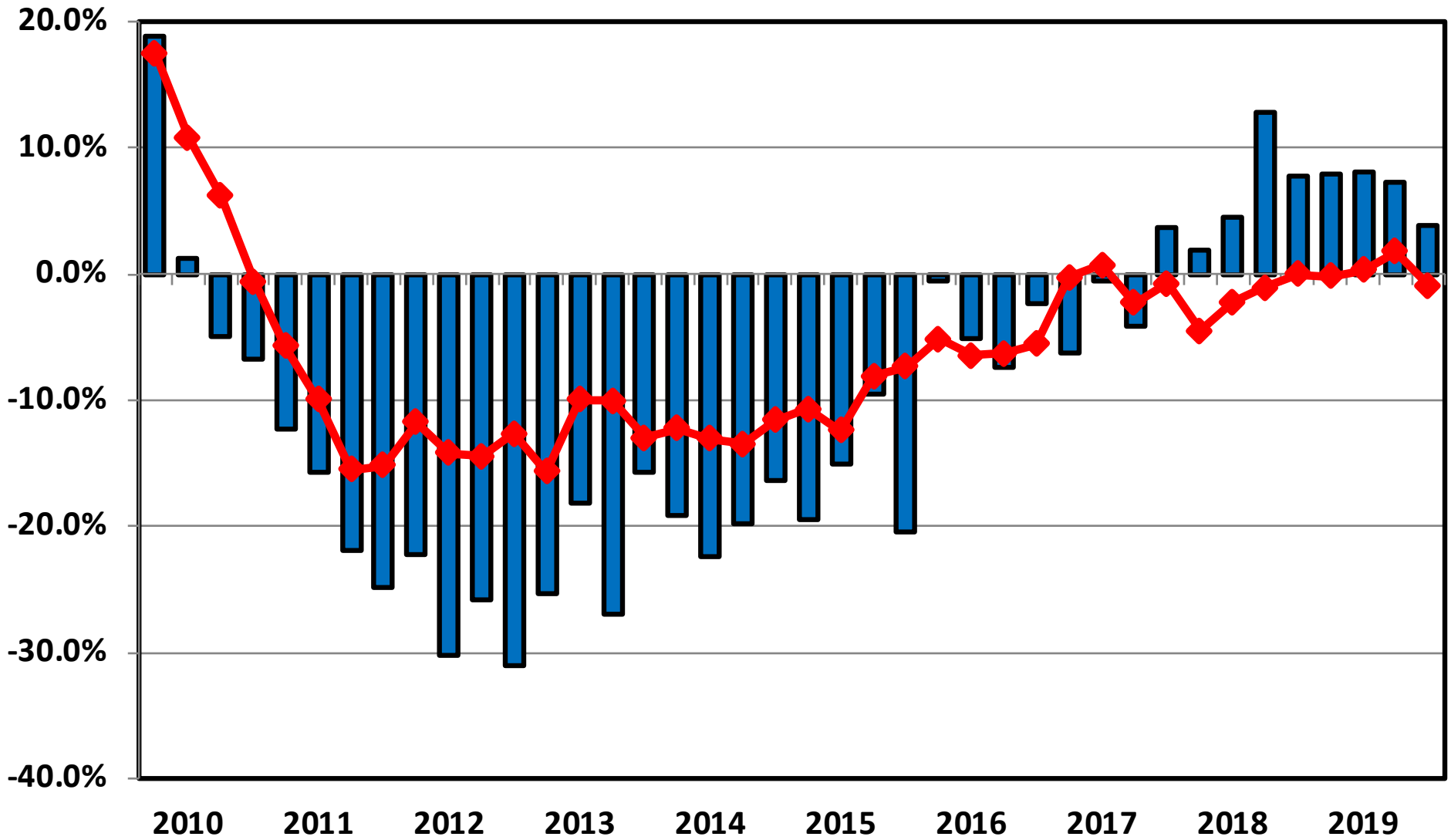


40.0% – 59.9%



60.0% or More

**Filing Trends By Quarter Nevada vs. National Average
(Percent Change From Same Quarter One Year Prior)**



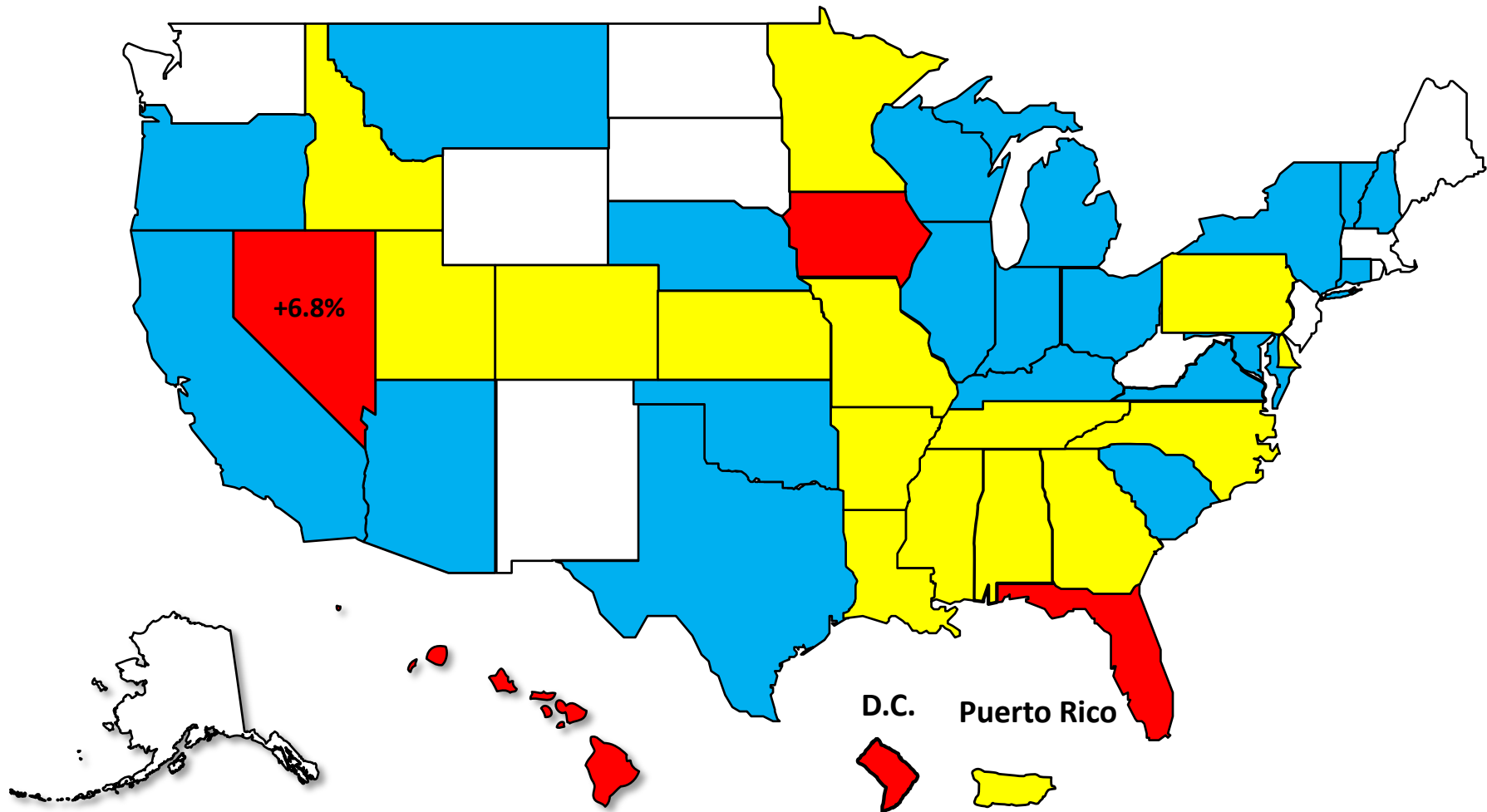
■ Nevada ◆ National

Bankruptcy Filing Trends

Calendar Year 2019 vs. 2018

National Average = .2% Increase

- Decline Over 5%
- Decline 0 - 5%
- Increase 0 - 5%
- Increase Over 5%





AMERICAN
BANKRUPTCY
INSTITUTE

www.abi.org