

Bankruptcy Filing Trends in Rhode Island



Prepared by: **The American Bankruptcy Institute**
<http://www.abi.org/>



AMERICAN
BANKRUPTCY
INSTITUTE

Updated
February 2020

Rhode Island



State at a Glance		
	Rhode Island	National
Population (7/1/2019)	1,059,361	328,239,523
- Change since 2010	0.6%	6.3%
- Foreign Born	13.6%	13.5%
Size (Square Miles)	1,034	3,531,905
Median Household Income	\$63,296	\$60,293
Persons per Household	2.47	2.63
Per Capita Income	\$34,619	\$32,621
Median Home Value	\$249,800	\$204,900
Homeownership Rate	60.3%	63.8%
High School Graduate (or Higher)	88.0%	87.7%
College Graduate (or Higher)	33.3%	31.5%
Disabled	9.8%	8.6%
No Health Insurance	4.8%	10.0%
In Poverty	12.9%	11.8%
Source: U.S. Census Bureau January 2020		

Prepared by: The American Bankruptcy Institute

<http://www.abi.org>

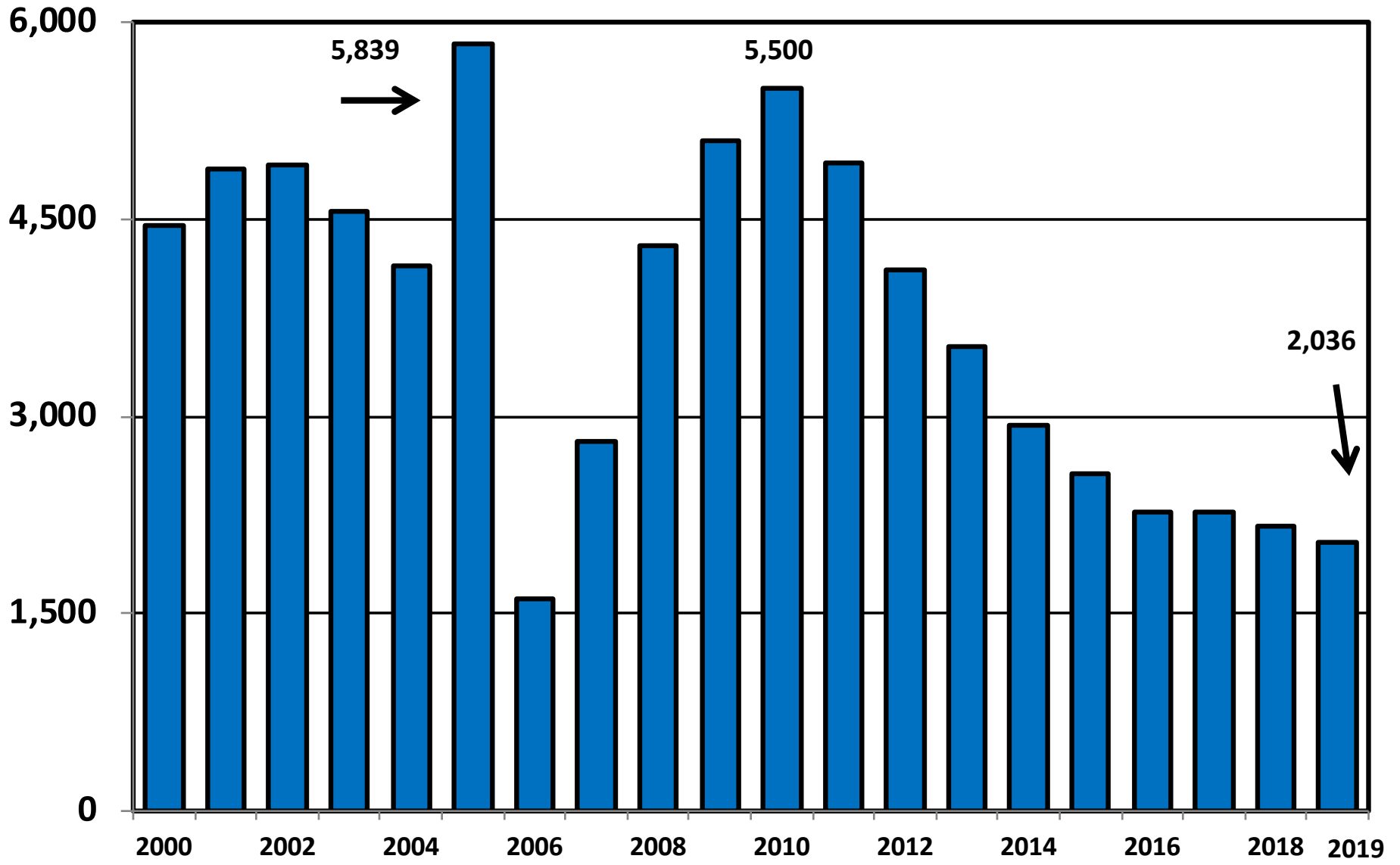
Bankruptcy Filings in Rhode Island

Calendar Years 2000 - 2019

Year	Total	Chapter 7	Chapter 11	Chapter 13	Other Cases
2000	4,457	4,146	10	301	0
2001	4,883	4,483	11	389	0
2002	4,907	4,502	8	397	0
2003	4,557	4,206	7	344	0
2004	4,142	3,864	15	263	0
2005	5,839	5,517	18	302	2
2006	1,621	1,288	4	329	0
2007	2,817	2,182	11	624	0
2008	4,300	3,574	11	715	0
2009	5,096	4,361	20	714	1
2010	5,500	4,717	28	755	0
2011	4,931	4,053	10	867	1
2012	4,108	3,474	29	605	0
2013	3,528	2,967	6	555	0
2014	2,929	2,472	3	453	1
2015	2,569	2,094	9	466	0
2016	2,276	1,724	12	540	0
2017	2,271	1,739	12	520	0
2018	2,165	1,613	4	548	0
2019	2,036	1,559	6	471	0

District of Rhode Island

Total Bankruptcy Cases Filed Calendar Years 2000 - 2019



Total Filings Relative to Population 2000 - 2019



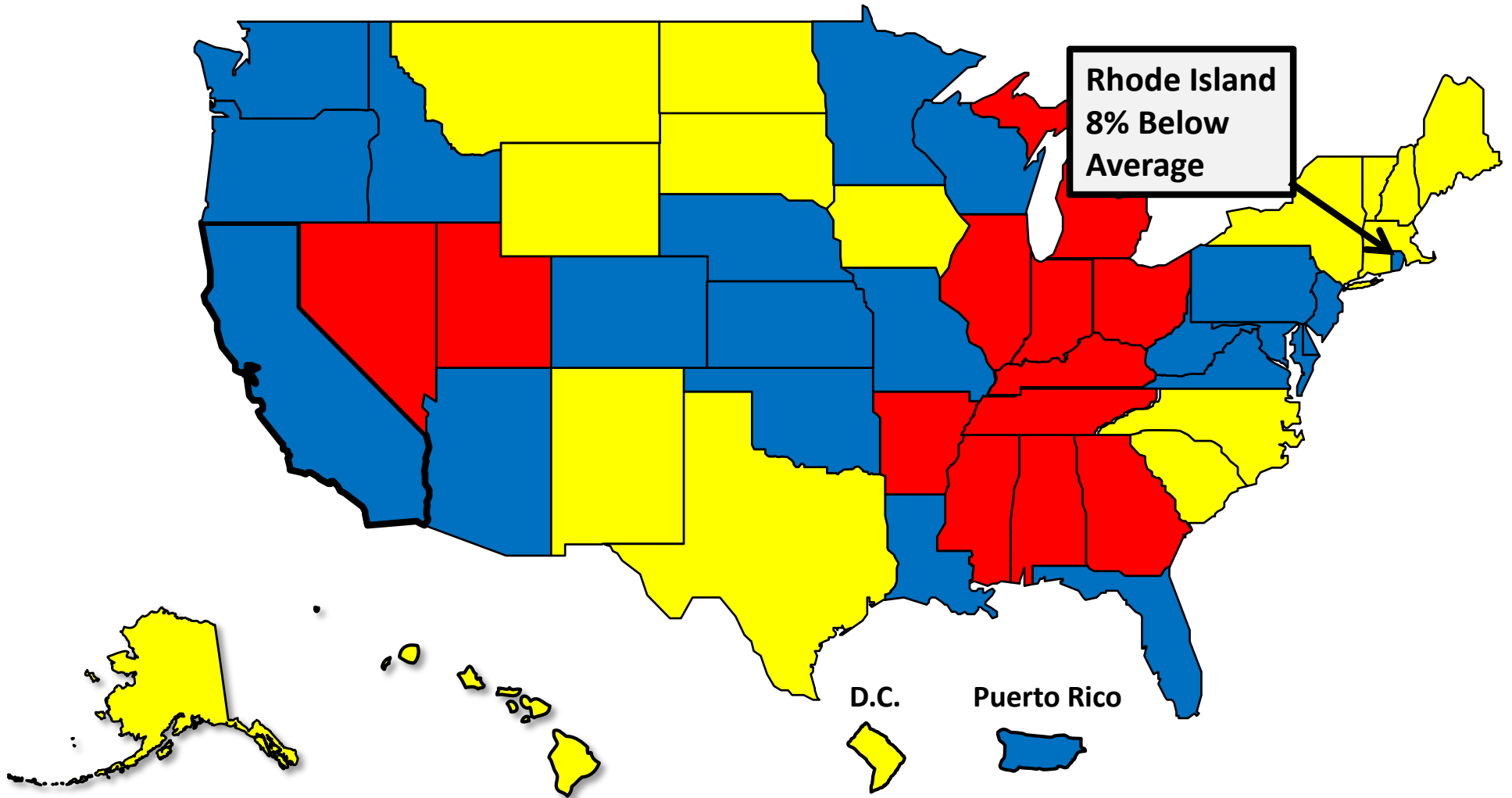
More than 25%
Above Average



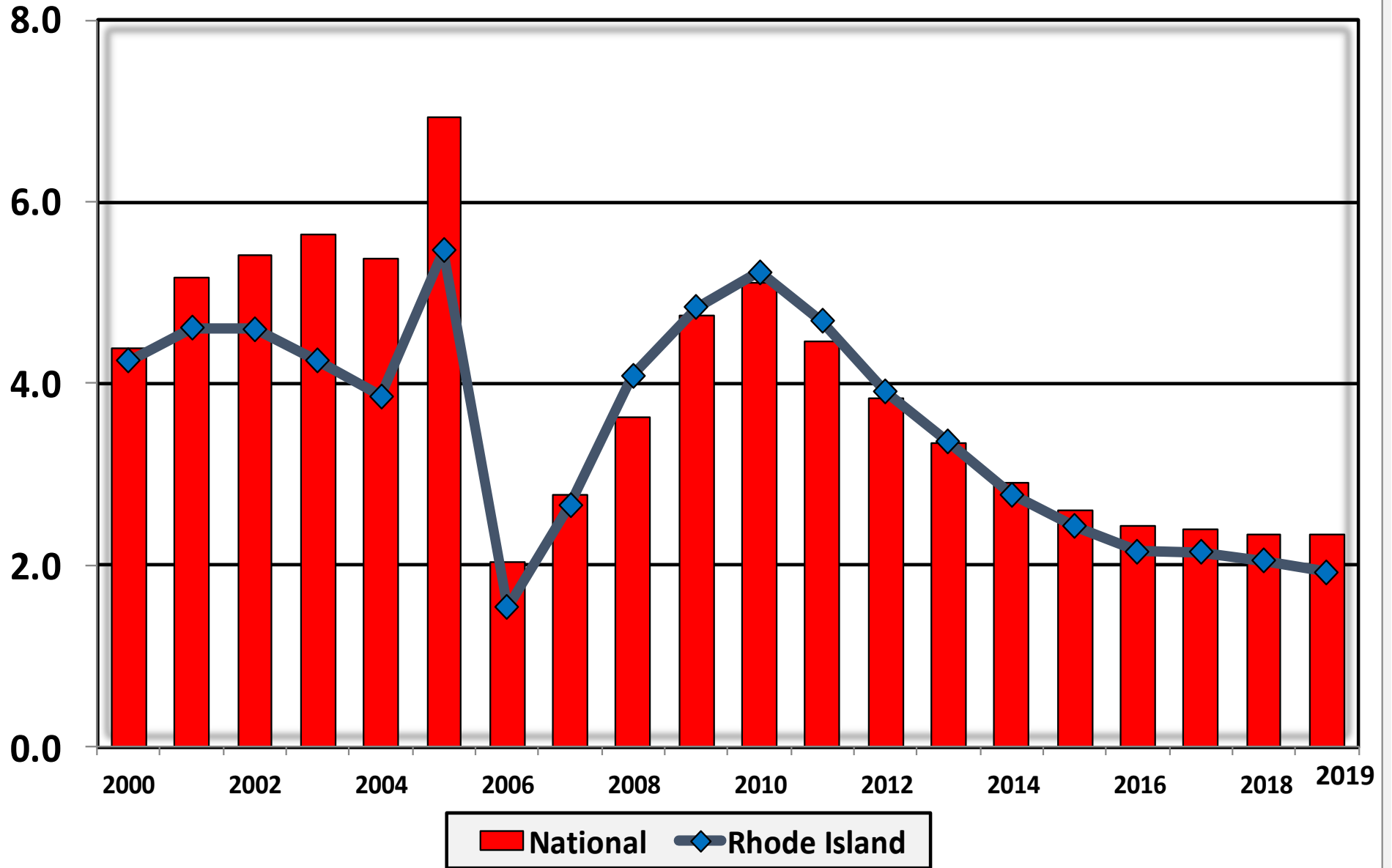
Within 25%
of Average



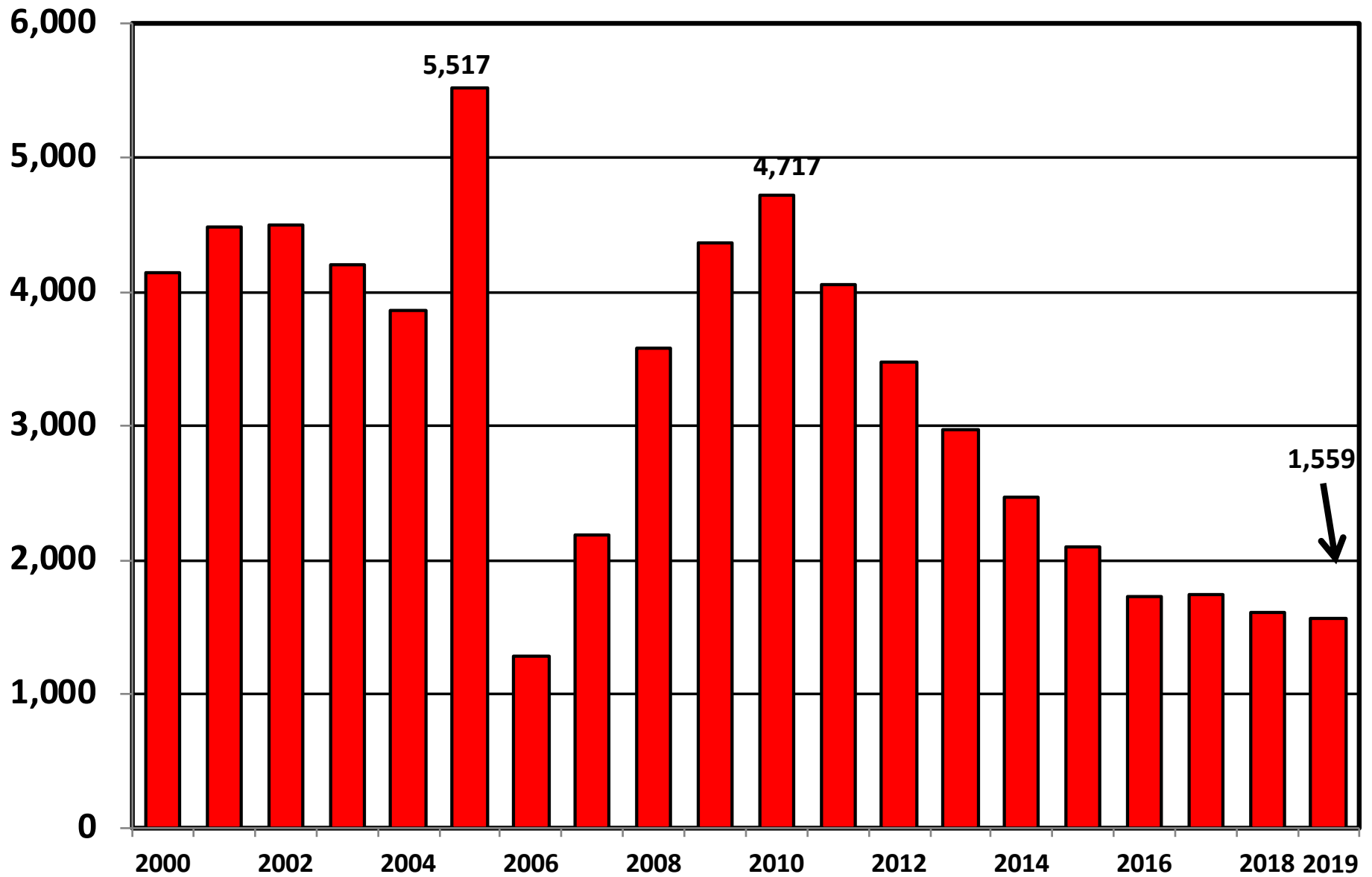
More than 25%
Below Average



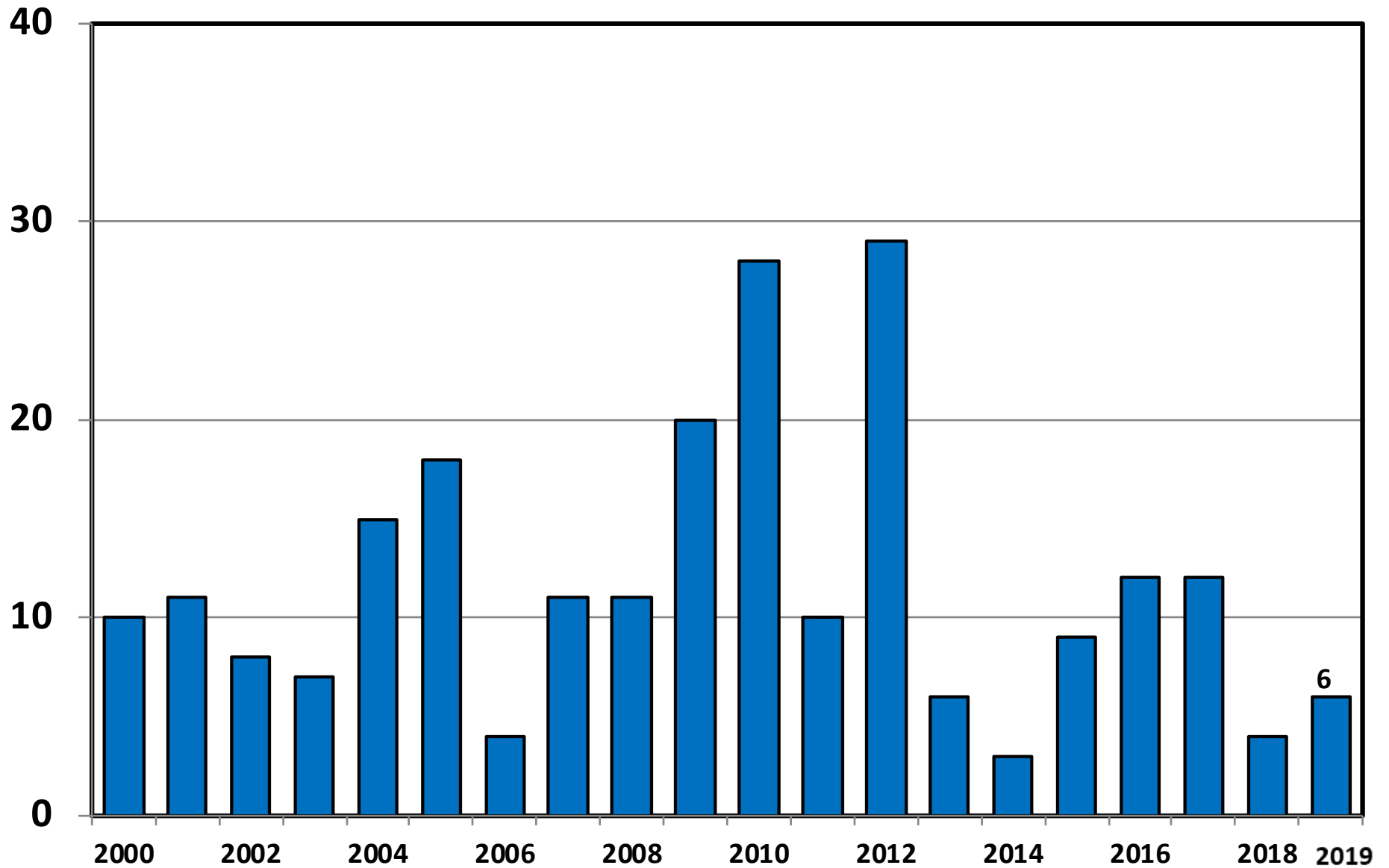
Bankruptcy Filings per 1,000 Population Rhode Island vs. National Average 2000 - 2019



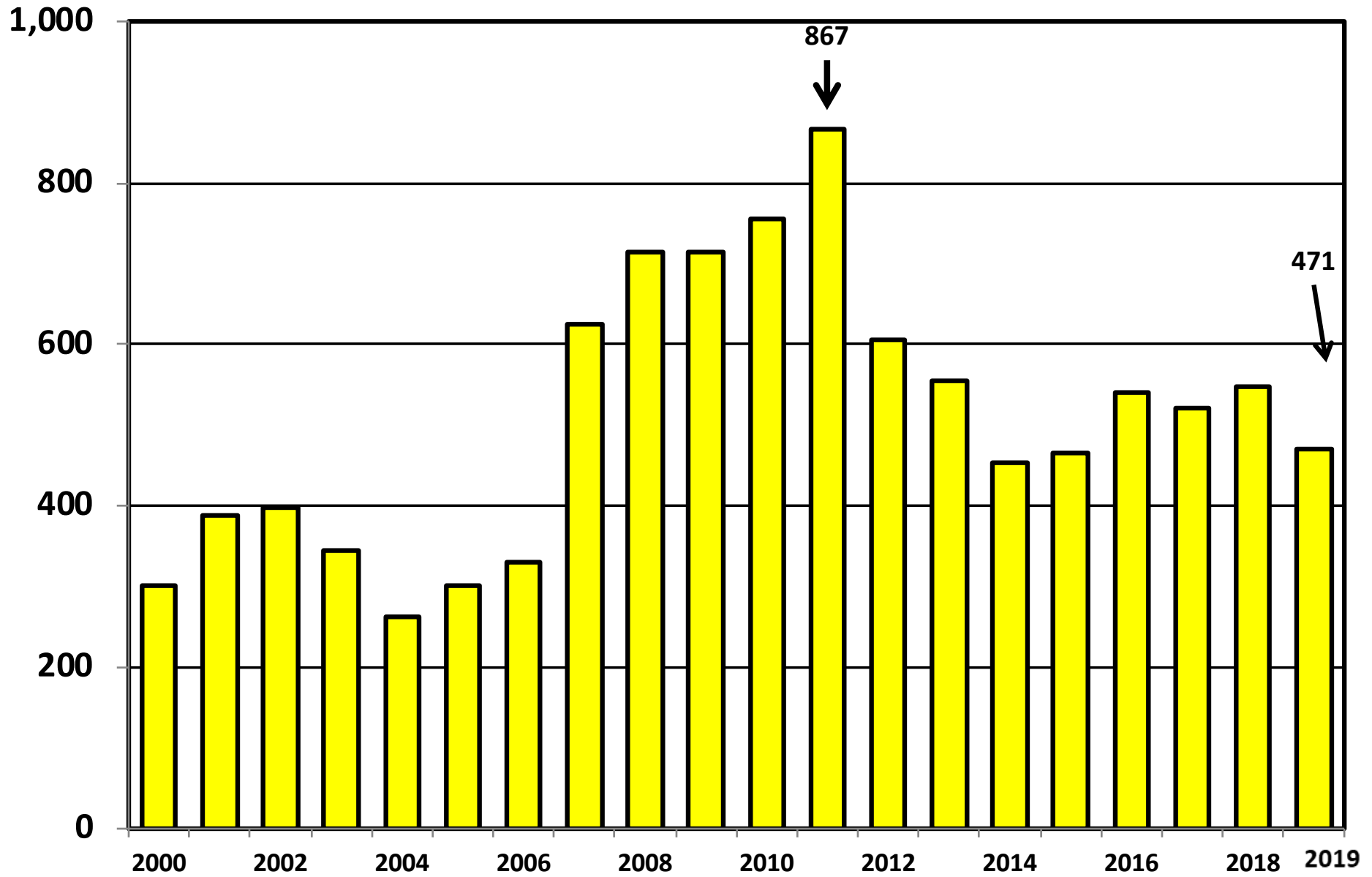
Chapter 7 Cases Filed in Rhode Island Calendar Years 2000 - 2019



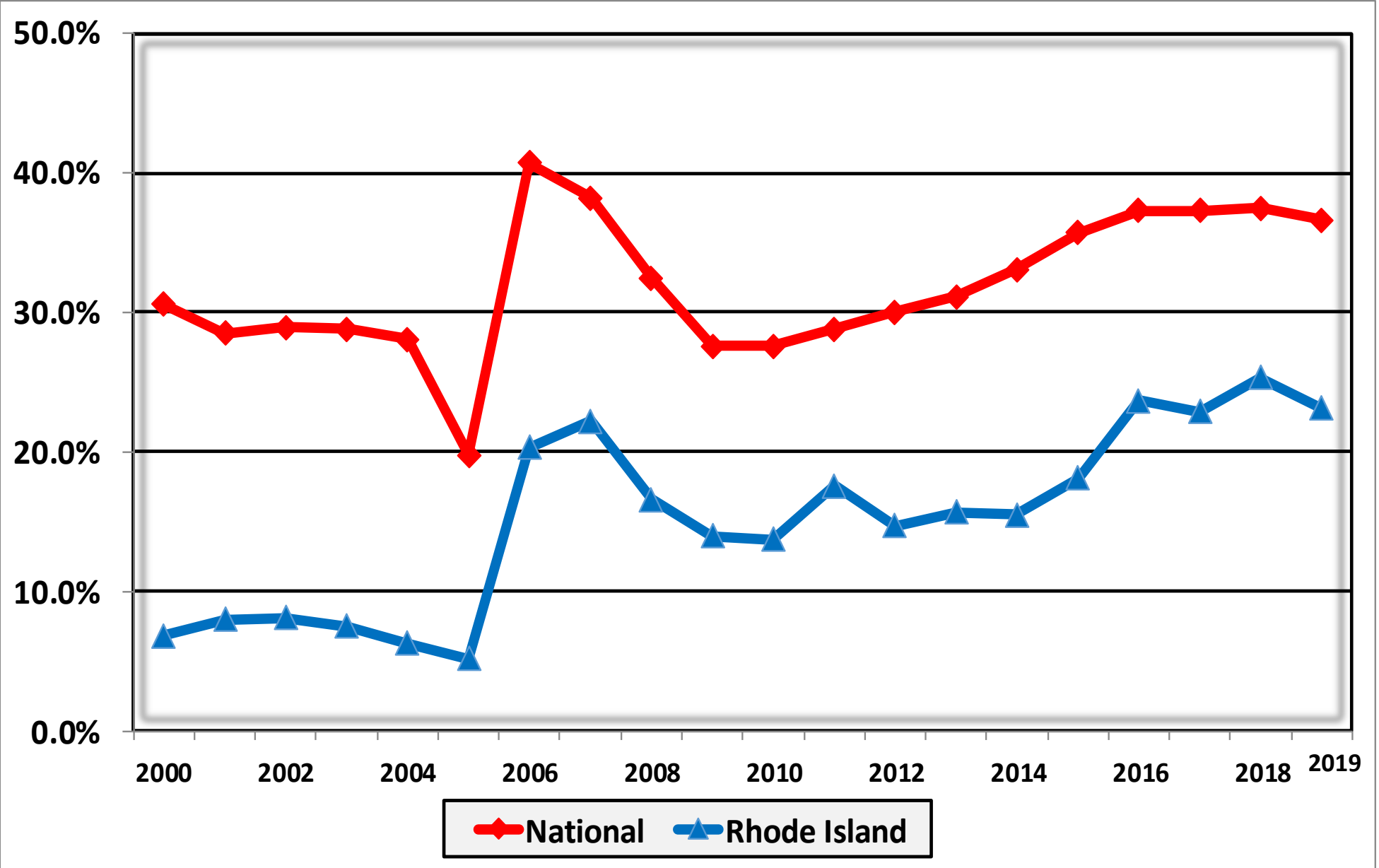
Chapter 11 Cases Filed in Rhode Island 2000 - 2019



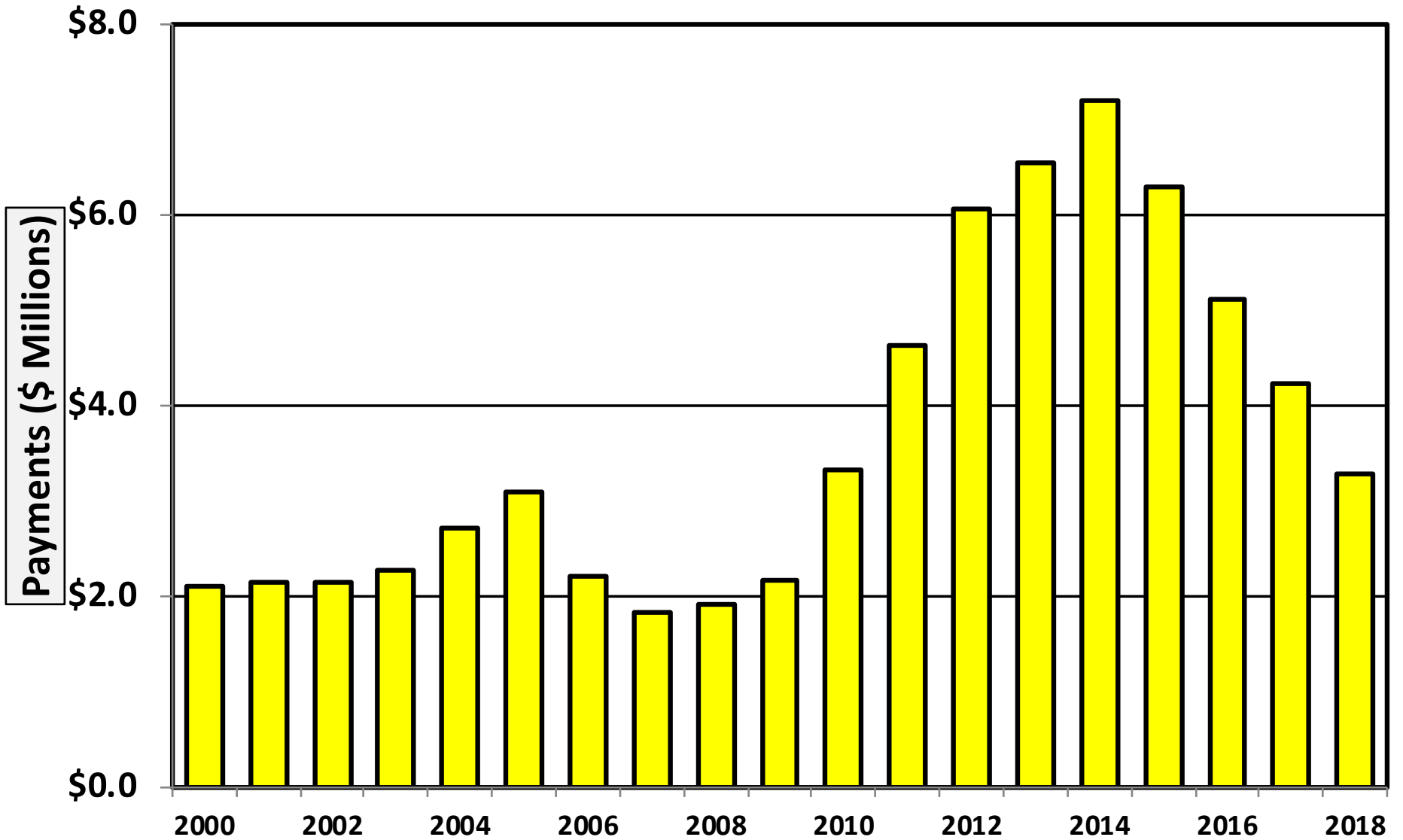
Chapter 13 Cases Filed in Rhode Island 2000 – 2019



**Percent of Cases Filed as Chapter 13
Calendar Years 2000 - 2019**

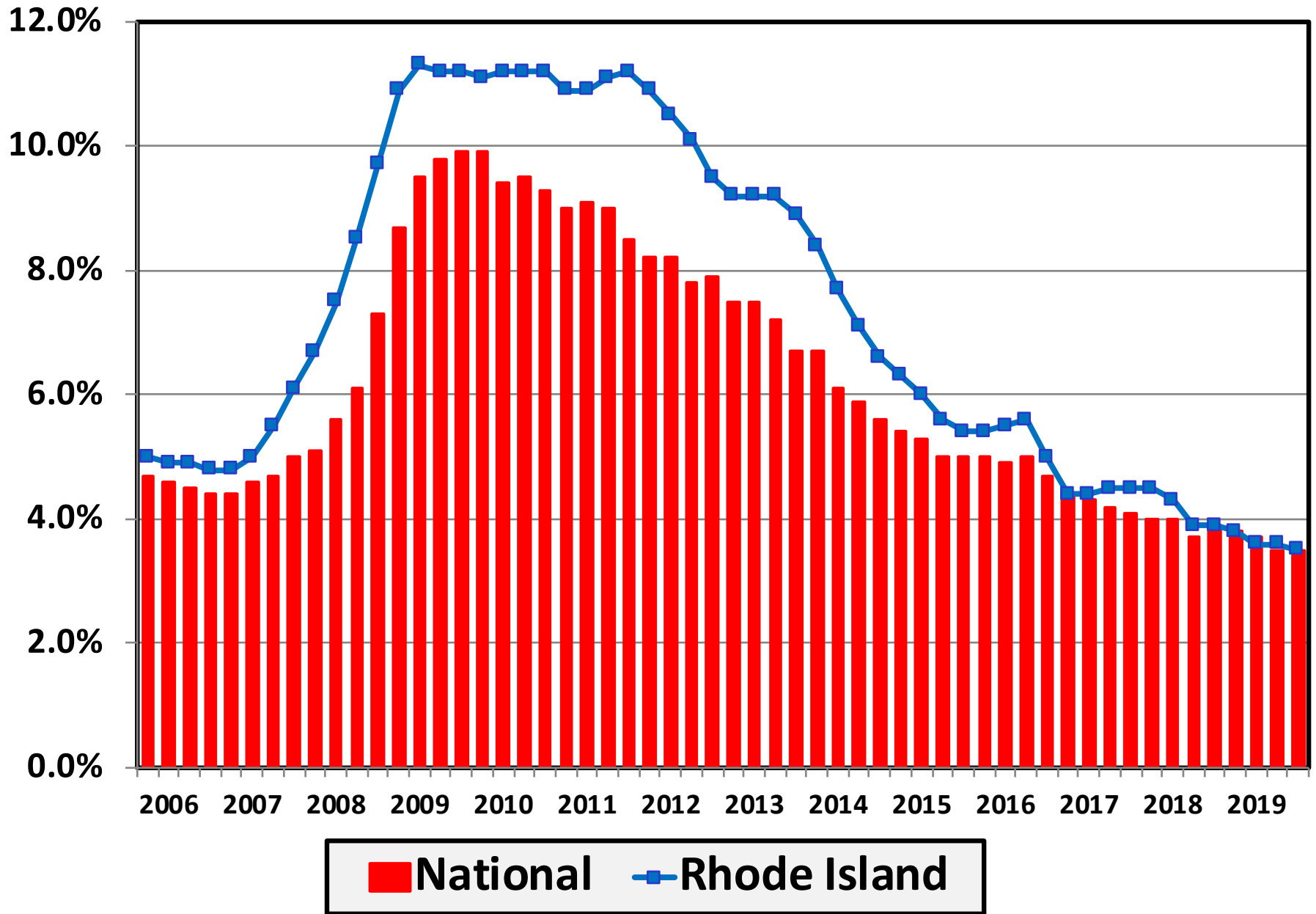


Chapter 13 Cases in Rhode Island
Amount (in Millions) Paid to Unsecured Creditors
Fiscal Years 2000 - 2018



Source: Executive Office for United States Trustees

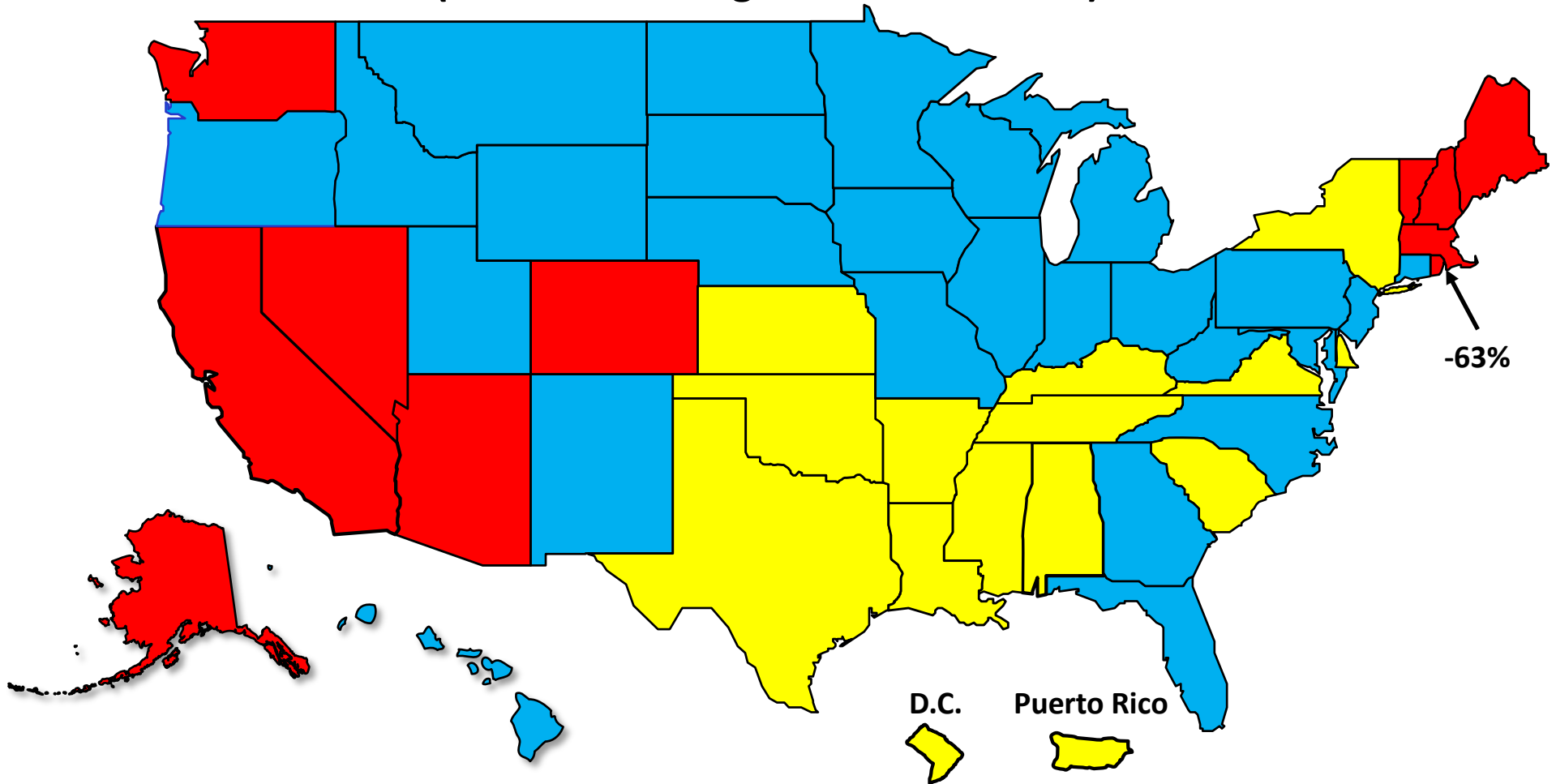
Unemployment Rate By Quarter 2006 - 2019



Source: Bureau of Labor Statistics

Percent Change in Total Filings Calendar Year 2019 Compared to 2010

(National Average = 51% Decrease)



Amount of Decrease



Under 40%

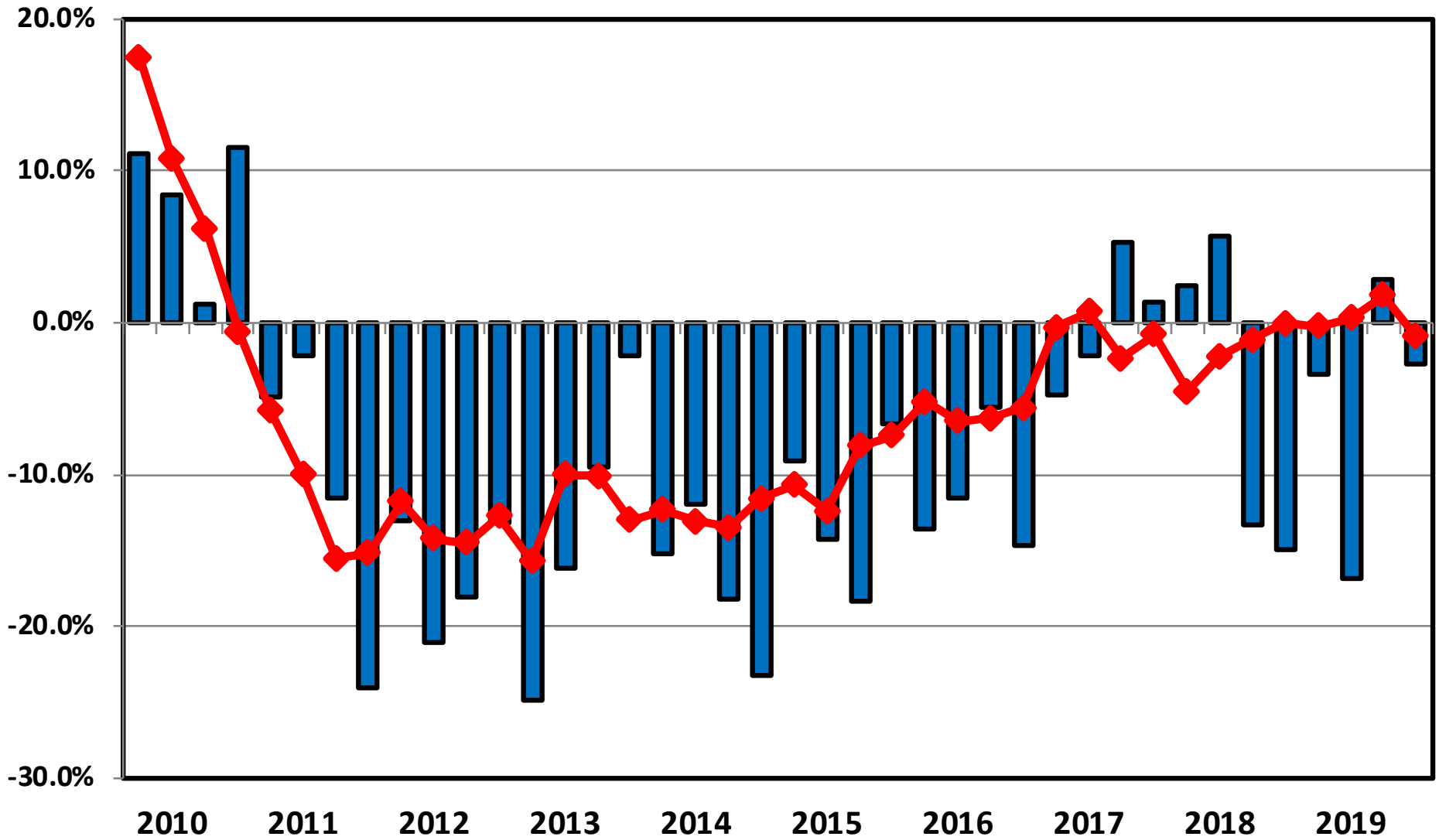


40.0% - 59.9%



60.0% or More

**Filing Trends By Quarter Rhode Island vs. National Average
(Percent Change From Same Quarter One Year Prior)**



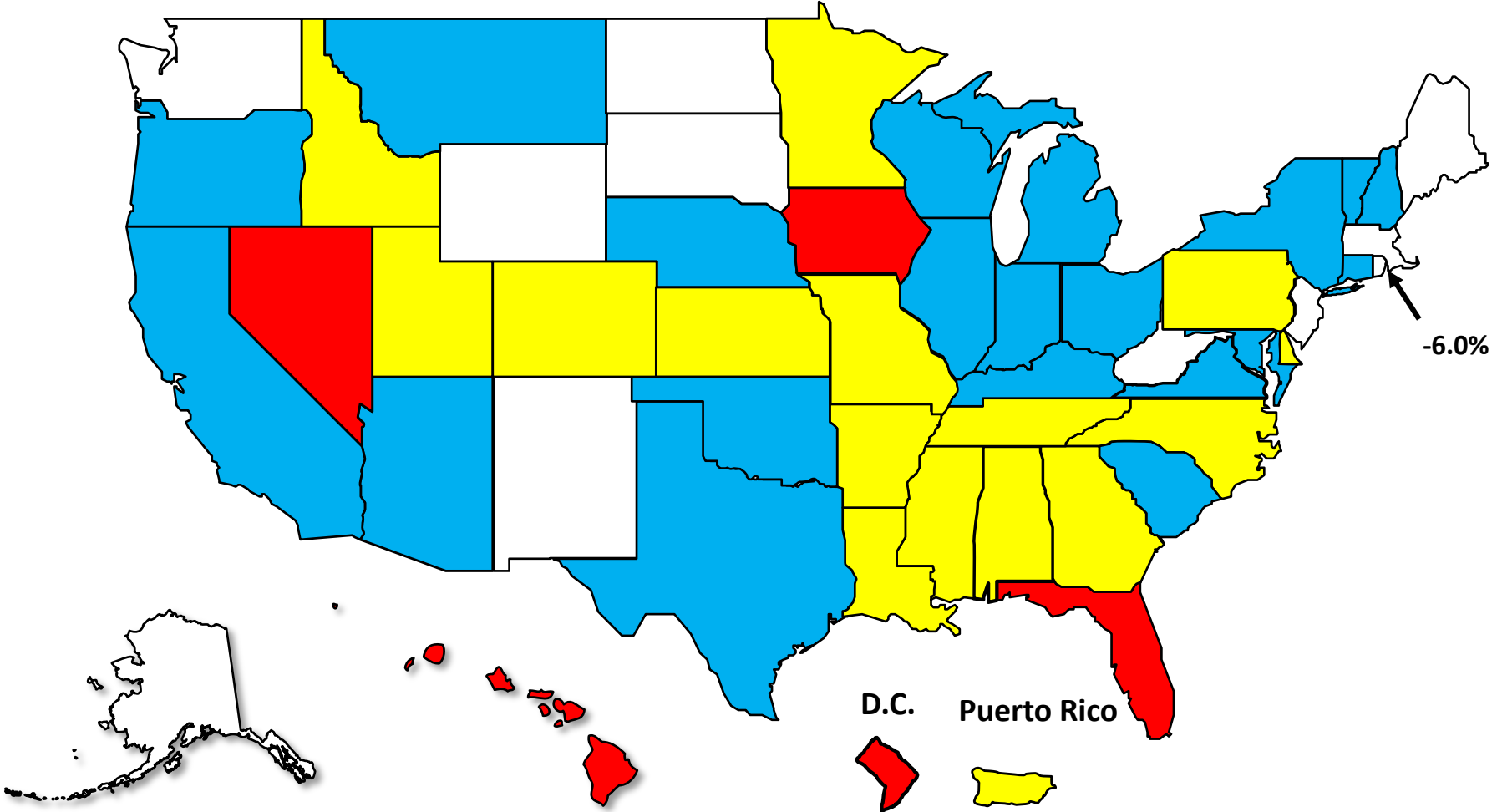
■ Rhode Island ◆ National

Bankruptcy Filing Trends

Calendar Year 2019 vs. 2018

National Average = .2% Increase

- Decline Over 5%
- Decline 0 - 5%
- Increase 0 - 5%
- Increase Over 5%





AMERICAN
BANKRUPTCY
INSTITUTE

www.abi.org