

# Weekly Bankruptcy Analysis

## April 17-23, 2023

*Written by:*

*Ed Flynn<sup>1</sup>*

*American Bankruptcy Institute; Alexandria, Va.*

The 8,671 bankruptcy cases filed last week were slightly above the number of filings during the same week last year and in 2020, but a little below the number of filings in 2021. While on the rise from last year, weekly filings are still running at only a little over half of pre-pandemic levels.

<b>Bankruptcy Filings - April 17 - 23, 2023</b>					
Type of Case	Number Filed	Percent Change From Same Week Last Four Years			
	2023	2022	2021	2020	2019
<b>Total</b>	<b>8,671</b>	<b>12.2%</b>	<b>-8.8%</b>	<b>0.8%</b>	<b>-43.5%</b>
- Chapter 7	5,102	5.4%	-29.9%	-21.8%	-49.9%
- Chapter 11	171	134.2%	116.5%	98.8%	47.4%
- Chapter 13	3,394	20.7%	58.9%	70.9%	-32.5%
- Other Cases*	4	-20.0%	-33.3%	-20.0%	-81.0%
<i>* Chapters 9, 12 and 15</i>					

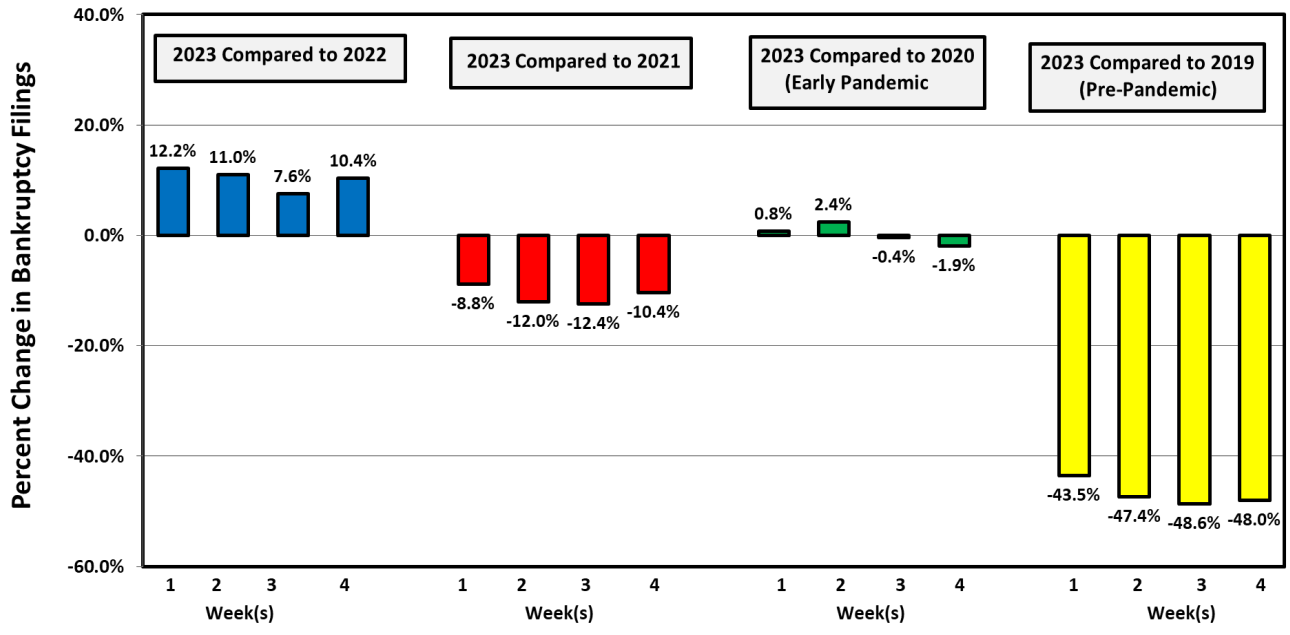
The following charts show recent weekly filing trends by chapter compared to the same week during the last four years.

---

<sup>1</sup> Ed Flynn is a consultant with ABI. He previously worked for more than 30 years at the Executive Office for U.S. Trustees and the Administrative Office of the U.S. Courts.

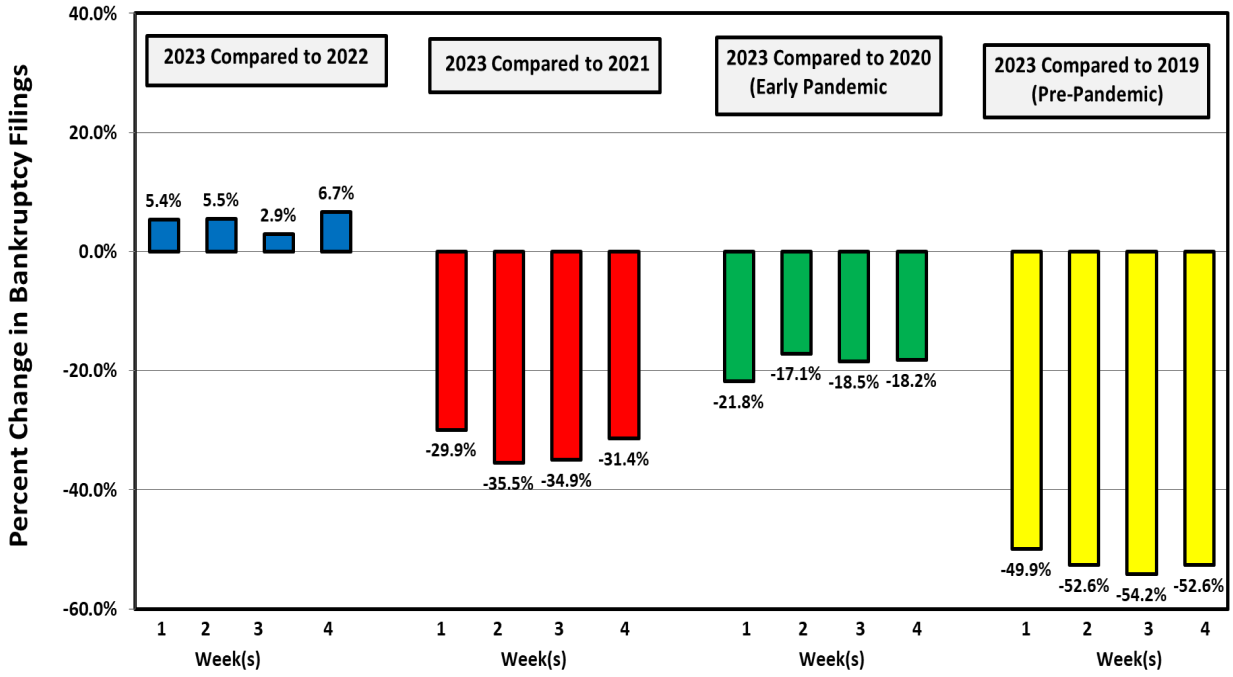
Week Ending  
April 23

### Bankruptcy Filing Trends (All Chapters) Percent Change From 2022, 2021, 2020 and 2019



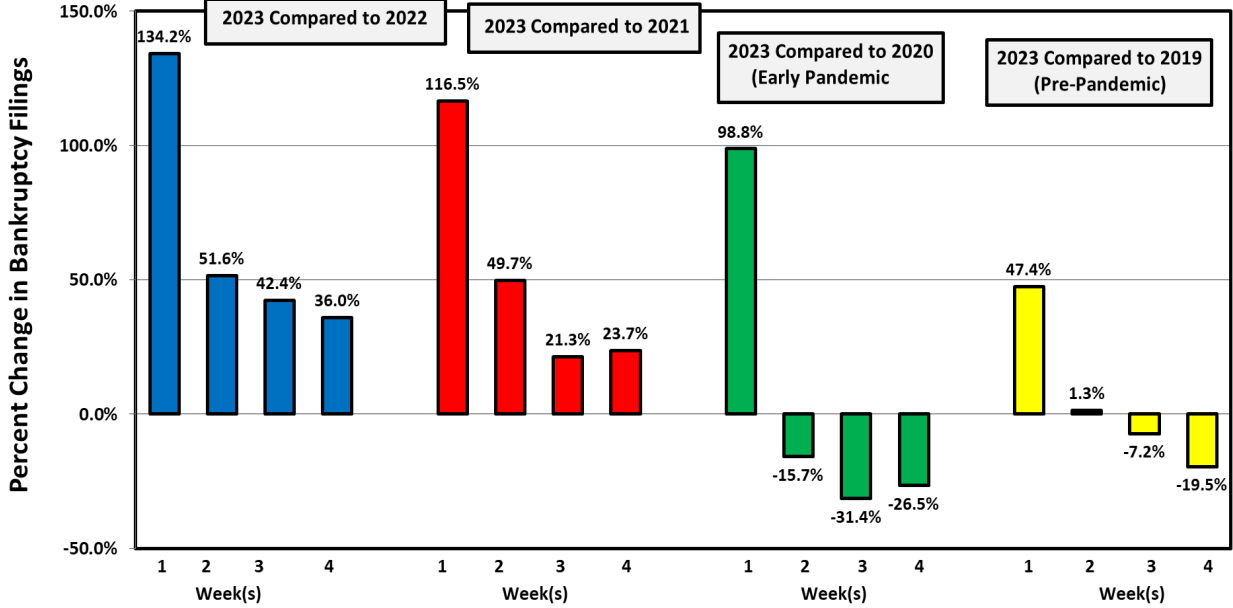
Week Ending  
April 23

### Chapter 7 Filing Trends Percent Change From 2022, 2021, 2020 and 2019



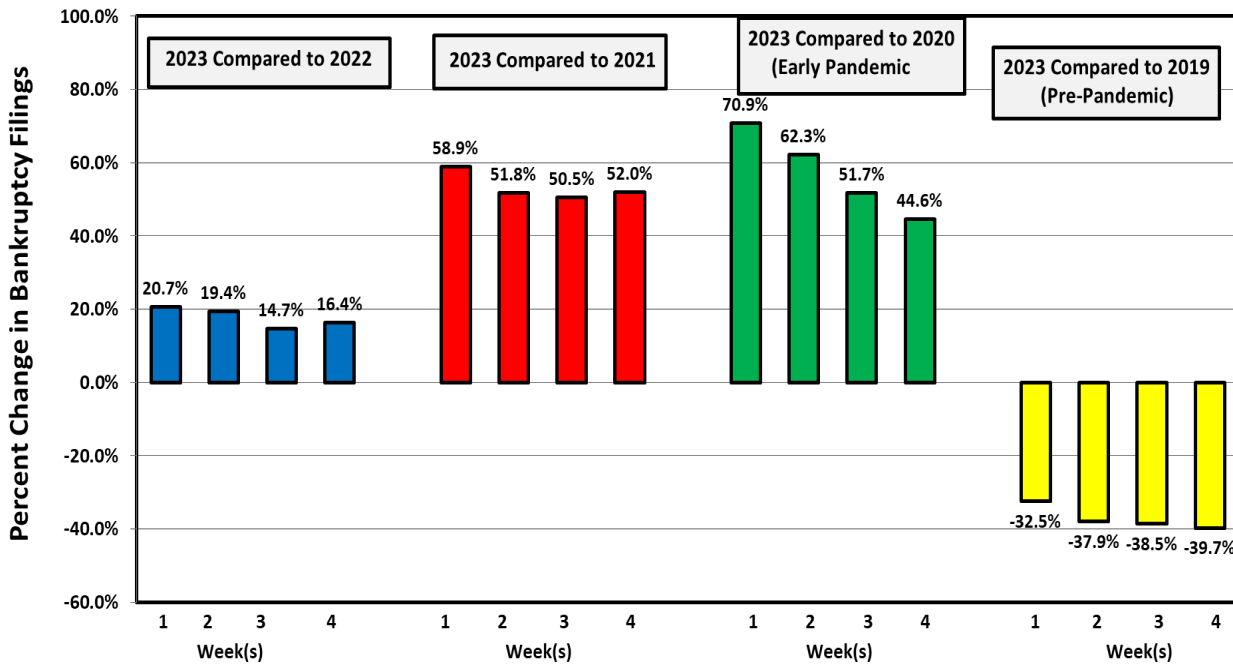
Week Ending  
April 23

### Chapter 11 Filing Trends Percent Change From 2022, 2021, 2020 and 2019



Week Ending  
April 23

### Chapter 13 Filing Trends Percent Change From 2022, 2021, 2020 and 2019



## Chapter 11 Cases

The 171 chapter 11 cases filed during the week were double the typical weekly average. However, 73 of the cases were filings related to the Bed Bath & Beyond case, which filed in the District of New Jersey on April 23. (This was the second very large filing in New Jersey in recent days; David's Bridal filed there on April 16.)

There were two other large or notable chapter 11 cases filed during the week. Beverly Community Hospital Association filed in the Central District of California on April 19, along with two related entities. Wood products manufacturer SLP Holdings Ltd. filed in Delaware on April 21, along with three related entities.

<b>Types of Chapter 11 Cases Filed</b>					
	<b>April 17 - 23</b>				
	<b>2023</b>	<b>2022</b>	<b>2021</b>	<b>2020</b>	<b>2019</b>
<b>Total Filed</b>	<b>171</b>	<b>73</b>	<b>79</b>	<b>86</b>	<b>116</b>
<b>Solo Cases</b>	<b>66</b>	<b>51</b>	<b>55</b>	<b>37</b>	<b>92</b>
<b>Parent Cases</b>	<b>10</b>	<b>7</b>	<b>4</b>	<b>7</b>	<b>7</b>
<b>Child Cases</b>	<b>95</b>	<b>15</b>	<b>20</b>	<b>42</b>	<b>17</b>
<b><i>Filed By Individuals</i></b>	<b>15</b>	<b>18</b>	<b>23</b>	<b>13</b>	<b>39</b>
<b>Subchapter V Cases</b>	<b>42</b>	<b>23</b>	<b>23</b>	<b>12</b>	<b>NA</b>

See ABI's Newsroom for news of the latest filings, and other news of interest to bankruptcy professionals, at [www.abi.org](http://www.abi.org).