

# Weekly Bankruptcy Analysis

## April 24-30, 2023

*Written by:*

*Ed Flynn<sup>1</sup>*

*American Bankruptcy Institute; Alexandria, Va.*

The 11,069 bankruptcy cases filed last week represented the second-highest weekly total in nearly two years. Three factors contributed to the relatively high weekly filing total. First, filings are always higher on the last business day of the month, because of the income calculations used in the chapter 7 means test. Second, filings are higher in March and April than any other months. Finally, filings have been on the increase in recent months after bottoming out in the first half of 2022.

Bankruptcy Filings April 24 - 30, 2023					
Type of Case	Number Filed	Percent Change From Same Week Last Four Years			
	2023	2022	2021	2020	2019
<b>Total</b>	<b>11,069</b>	<b>14.2%</b>	<b>-9.1%</b>	<b>-13.1%</b>	<b>-46.8%</b>
- Chapter 7	6,907	12.0%	-26.7%	-29.9%	-52.1%
- Chapter 11	85	1.2%	-17.5%	-26.7%	-32.0%
- Chapter 13	4,073	18.4%	54.3%	54.7%	-35.0%
- Other Cases*	4	0.0%	-63.6%	-91.7%	-76.5%
* Chapters 9, 12 and 15					

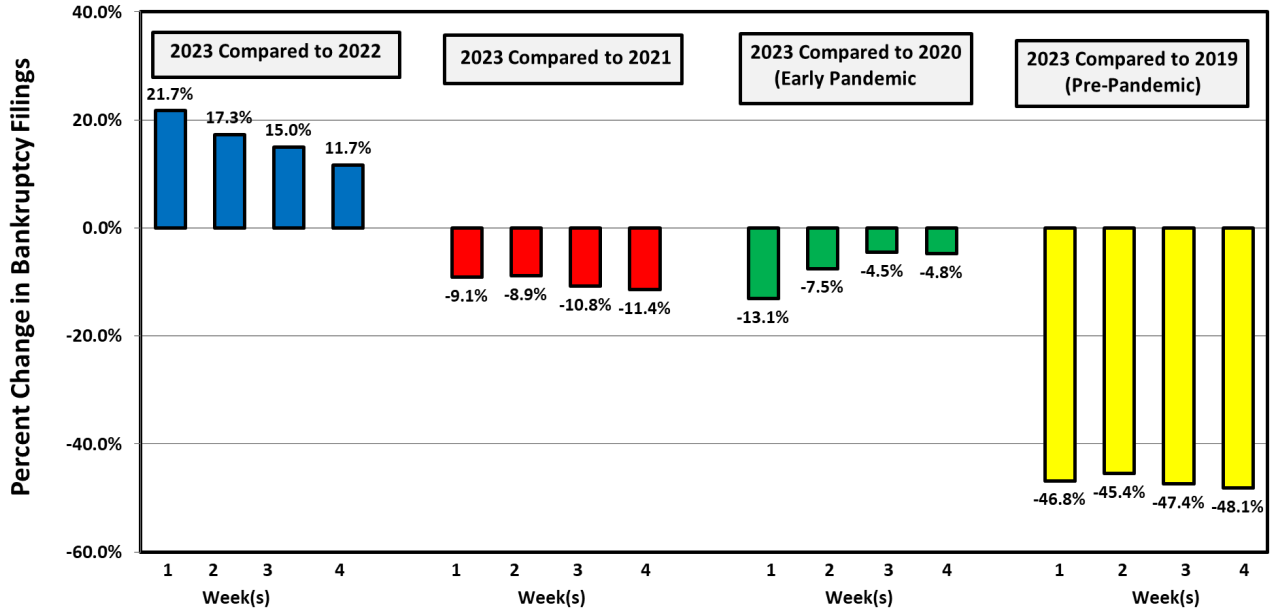
The following charts show recent weekly filing trends by chapter compared to the same week during the last four years.

---

<sup>1</sup> Ed Flynn is a consultant with ABI. He previously worked for more than 30 years at the Executive Office for U.S. Trustees and the Administrative Office of the U.S. Courts.

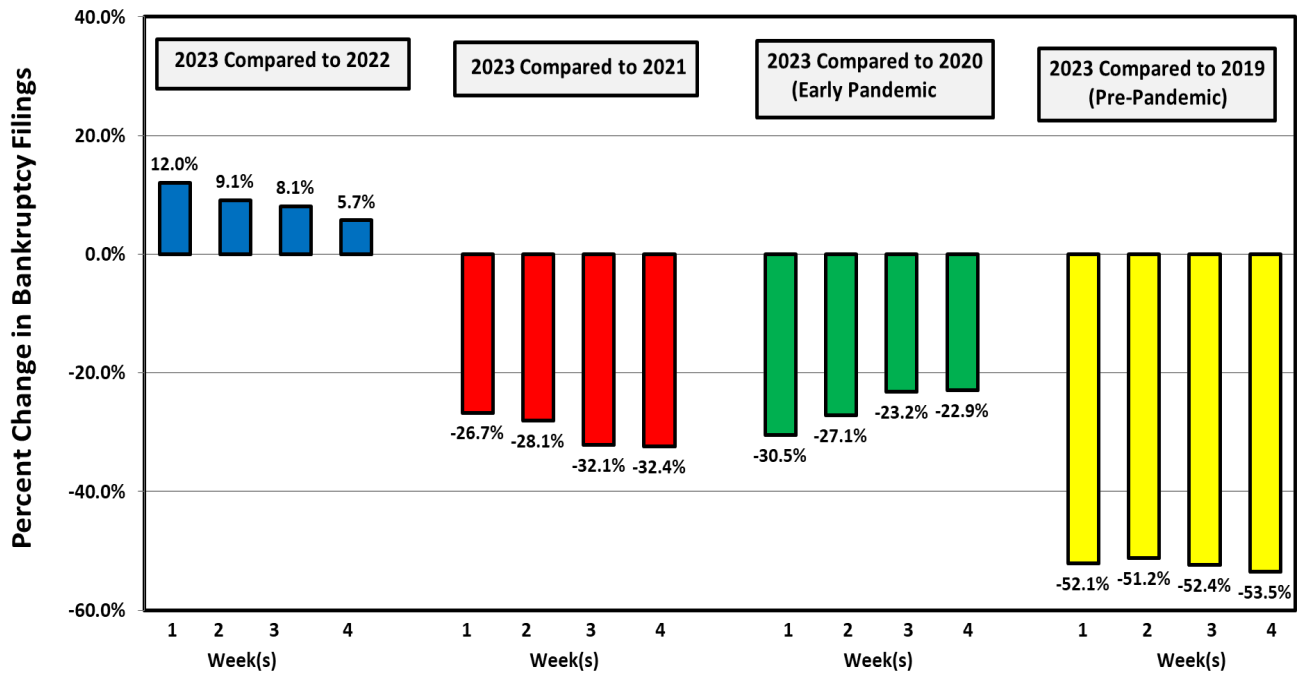
Week Ending  
April 30

### Bankruptcy Filing Trends (All Chapters) Percent Change From 2022, 2021, 2020 and 2019



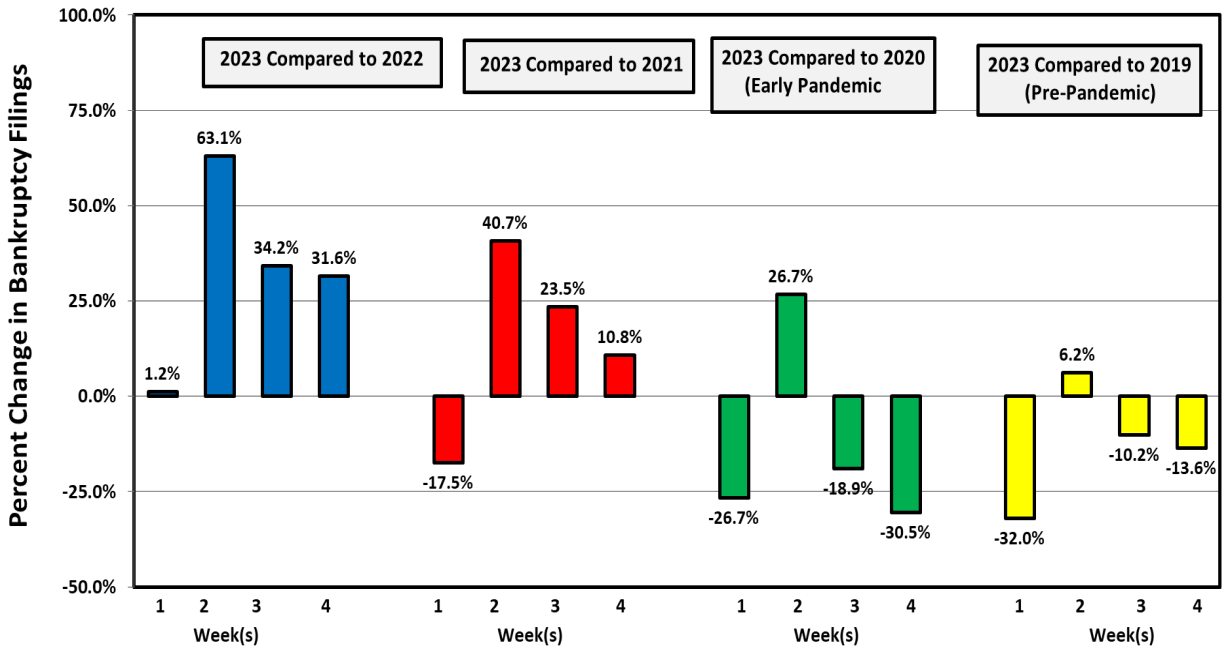
Week Ending  
April 30

### Chapter 7 Filing Trends Percent Change From 2022, 2021, 2020 and 2019



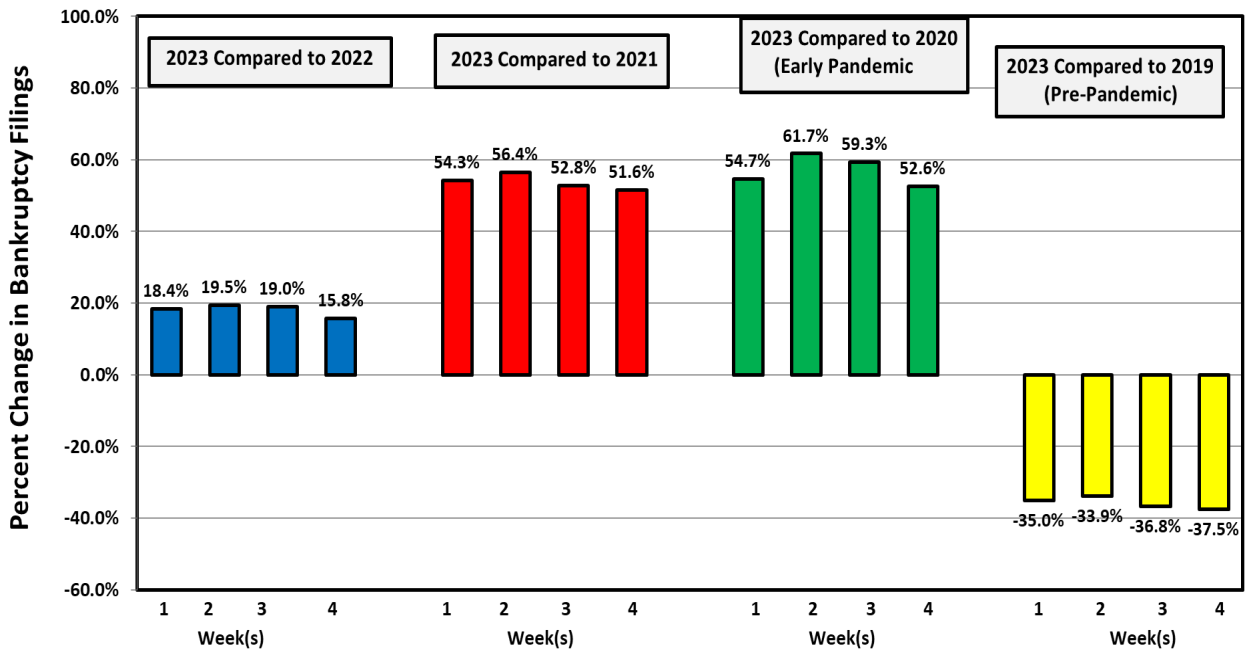
Week Ending  
April 30

### Chapter 11 Filing Trends Percent Change From 2022, 2021, 2020 and 2019



Week Ending  
April 30

### Chapter 13 Filing Trends Percent Change From 2022, 2021, 2020 and 2019



## Chapter 11 Cases

The 85 chapter 11 cases filed during the week were about the same as filings during the same week last year, but down from filings in 2010 and 2020. About half of the chapter 11 debtors elected to proceed under subchapter V.

There were two large or notable chapter 11 cases filed during the week. Talc supplier Whittaker, Clark & Daniels, Inc., filed in New Jersey on April 26, along with three related entities. (This was the third very large filing in New Jersey in recent weeks. David's Bridal filed there on April 16, and Bed Bath & Beyond also filed there on April 23.) The second notable filing of the week was by data center operator Internap Holding LLC, which filed in Delaware on April 28, along with three affiliates.

<b>Types of Chapter 11 Cases Filed</b>					
	<b>April 24 - 30</b>				
	<b>2023</b>	<b>2022</b>	<b>2021</b>	<b>2020</b>	<b>2019</b>
<b>Total Filed</b>	<b>85</b>	<b>84</b>	<b>103</b>	<b>116</b>	<b>125</b>
<b>Solo Cases</b>	<b>68</b>	<b>61</b>	<b>66</b>	<b>38</b>	<b>98</b>
<b>Parent Cases</b>	<b>6</b>	<b>5</b>	<b>9</b>	<b>12</b>	<b>7</b>
<b>Child Cases</b>	<b>11</b>	<b>18</b>	<b>28</b>	<b>66</b>	<b>20</b>
<b>Filed By Individuals</b>	<b>14</b>	<b>23</b>	<b>28</b>	<b>13</b>	<b>41</b>
<b>Subchapter V Cases</b>	<b>42</b>	<b>27</b>	<b>62</b>	<b>12</b>	<b>NA</b>

See ABI's Newsroom for news of the latest filings, and other news of interest to bankruptcy professionals, at [www.abi.org](http://www.abi.org).