

Weekly Bankruptcy Analysis

November 27-December 3, 2023

Written by:

Ed Flynn¹

American Bankruptcy Institute; Alexandria, Va.

The 10,898 bankruptcy cases filed last week were nearly double the total filed during the prior week (which included the Thanksgiving holiday).

Bankruptcy Filings - November 27 - December 3					
Type of Case	Number Filed	Percent Change From Same Week Last Four Years			
	2023	2022	2021	2020	2019
Total	10,898	22.2%	34.7%	35.5%	-1.0%
- Chapter 7	6,356	26.6%	26.8%	13.7%	1.8%
- Chapter 11	83	-6.7%	13.7%	-48.8%	-20.2%
- Chapter 13	4,454	17.1%	48.4%	96.0%	-4.2%
- Other Cases*	5	-16.7%	0.0%	-70.6%	-54.5%
* Chapters 9, 12 and 15					

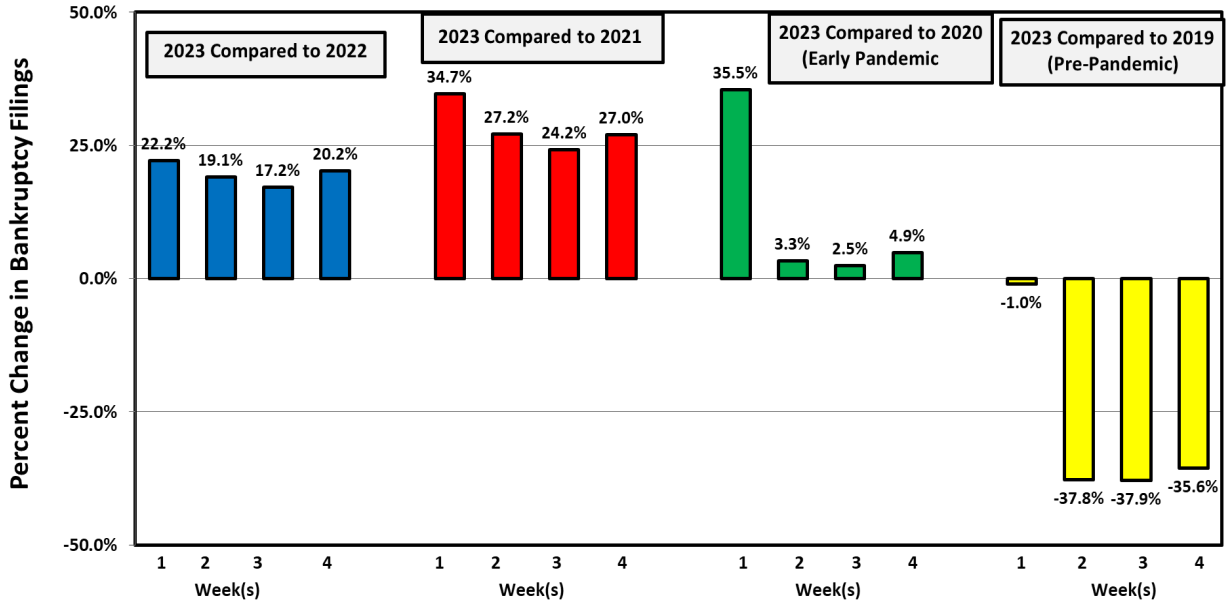
The following charts show recent weekly filing trends by chapter compared to the same week during the last four years.

¹ Ed Flynn is a consultant with ABI. He previously worked for more than 30 years at the Executive Office for U.S. Trustees and the Administrative Office of the U.S. Courts.

Week Ending
December 3

Bankruptcy Filing Trends (All Chapters)

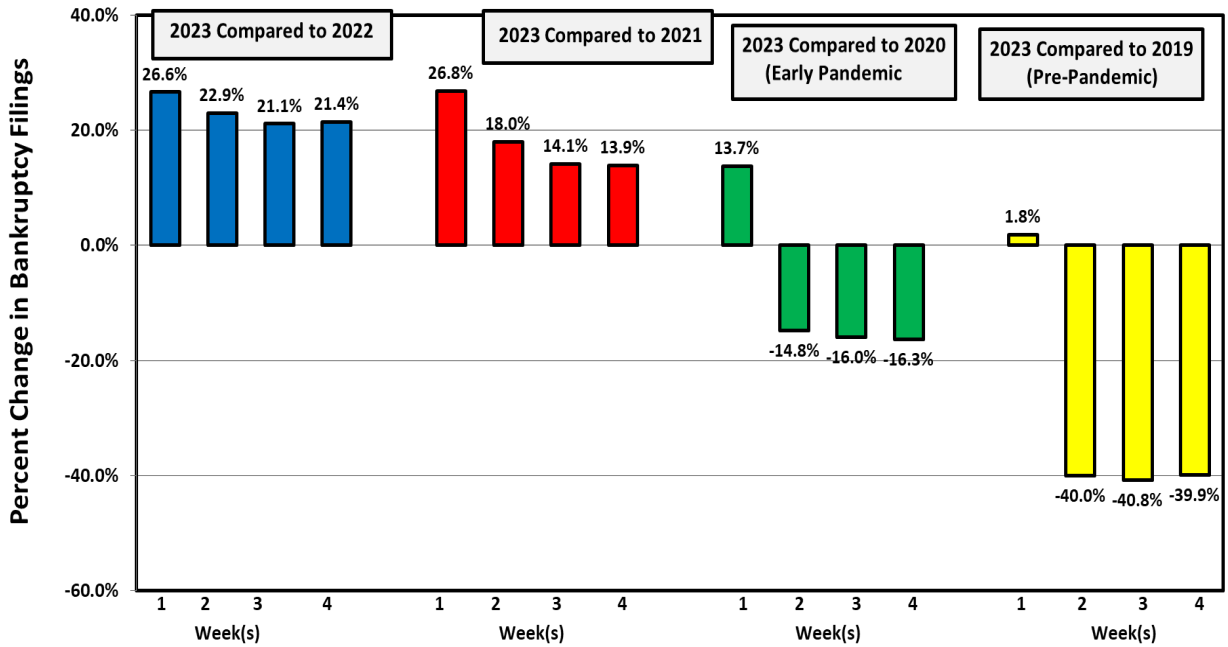
Percent Change From 2022, 2021, 2020 and 2019



Week Ending
December 3

Chapter 7 Filing Trends

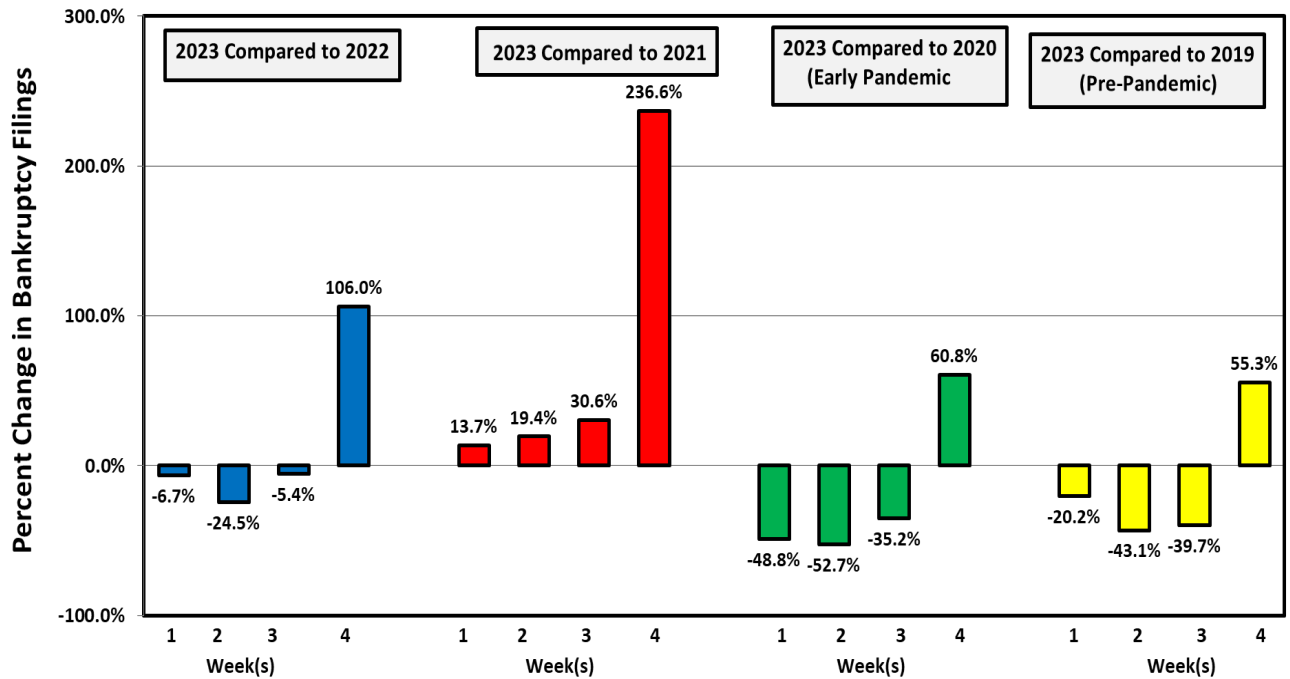
Percent Change From 2022, 2021, 2020 and 2019



Week Ending
December 3

Chapter 11 Filing Trends

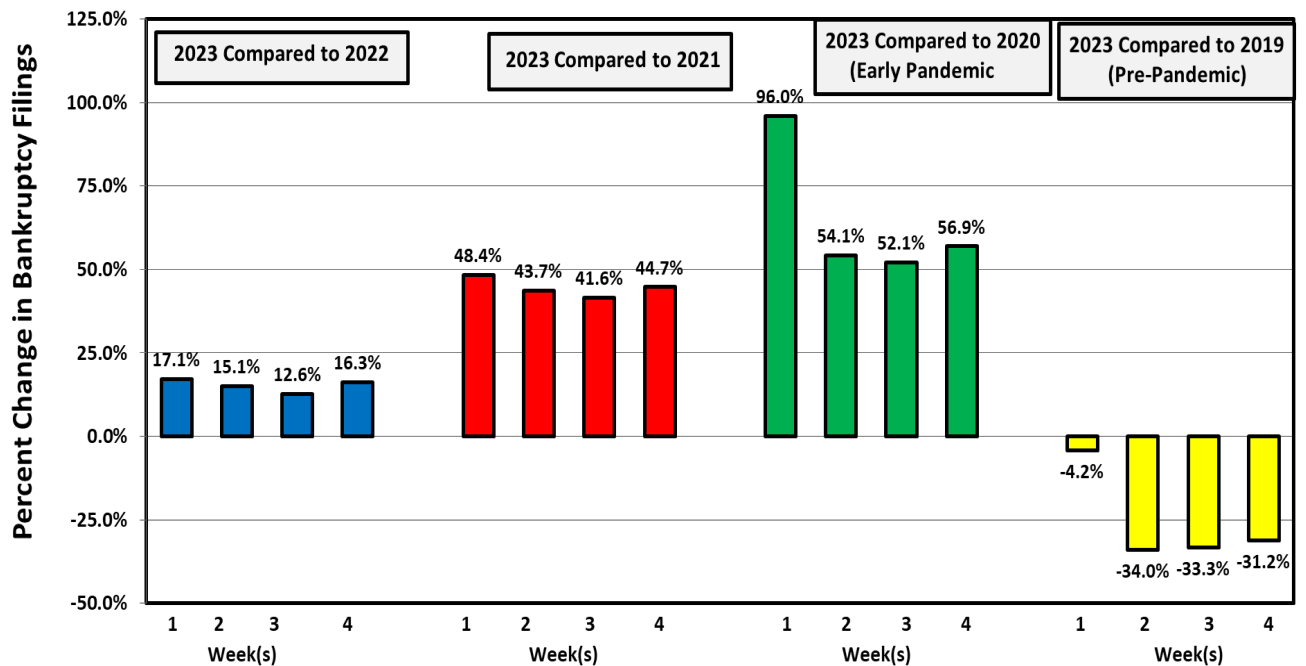
Percent Change From 2022, 2021, 2020 and 2019



Week Ending
December 3

Chapter 13 Filing Trends

Percent Change From 2022, 2021, 2020 and 2019



Chapter 11 Cases

The 83 chapter 11 cases filed last week were close to the total filed during the same week each of the last two years. Excluding related filings by corporate subsidiaries, chapter 11 filings during this particular week have been comparable to those of the last five years.

Types of Chapter 11 Cases Filed					
	November 27 - December 3				
	2023	2022	2021	2020	2019
Total Filed	83	89	73	162	104
Solo Cases	64	62	66	79	71
Parent Cases	8	6	3	10	7
Child Cases	11	21	4	73	26
<i>Filed By Individuals</i>	11	21	22	32	19
Subchapter V Cases	32	27	27	45	N/A

There was only one large or notable chapter 11 filing during the week. Chilean wind farmer Inversiones Latin America Power Ltda. filed in the Southern District of New York on Nov. 30, along with two related entities.

In fact, only five large or notable chapter 11 cases were filed during November (*i.e.*, cases with debtors who reported more than \$100 million in assets or liabilities, or cases that are of interest beyond a local area), the lowest monthly total of the year.

Month	Large Cases Filed
January	13
February	12
March	14
April	11
May	15
June	17
July	7
August	19
September	10
October	11
November	5

See ABI's Newsroom for news of the latest filings, and other news of interest to bankruptcy professionals, at www.abi.org.