

# Weekly Bankruptcy Analysis

## November 13-19, 2023

*Written by:*

*Ed Flynn<sup>1</sup>*

*American Bankruptcy Institute; Alexandria, Va.*

The 9,010 bankruptcy cases filed last week were well above the number of filings during the same week during the last two years. However, bankruptcy filings remain well below pre-pandemic levels.

<b>Bankruptcy Filings - November 13 - 19</b>					
Type of Case	Number Filed	Percent Change From Same Week Last Four Years			
	2023	2022	2021	2020	2019
<b>Total</b>	9,010	13.9%	18.8%	1.0%	-38.2%
- Chapter 7	5,154	17.9%	7.4%	-18.2%	-42.2%
- Chapter 11	103	35.5%	47.1%	15.7%	-35.2%
- Chapter 13	3,746	8.3%	38.0%	48.6%	-31.9%
- Other Cases*	7	75.0%	N/A	-22.2%	-46.2%
<i>* Chapters 9, 12 and 15</i>					

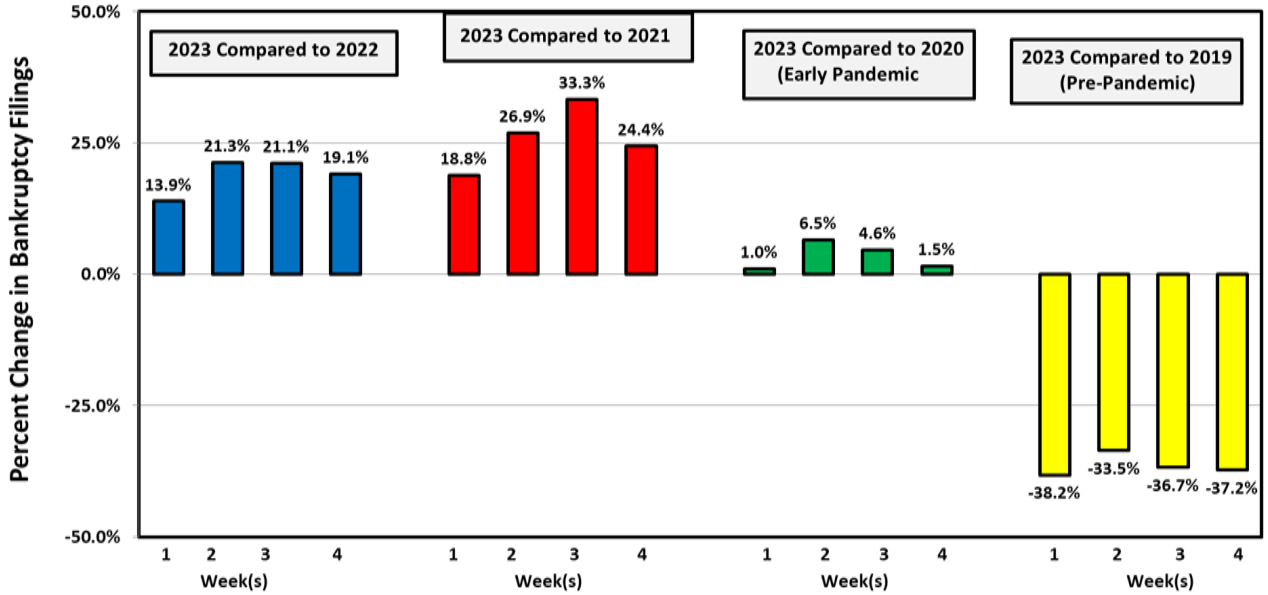
The following charts show recent weekly filing trends by chapter compared to the same week during the last four years.

---

<sup>1</sup> Ed Flynn is a consultant with ABI. He previously worked for more than 30 years at the Executive Office for U.S. Trustees and the Administrative Office of the U.S. Courts.

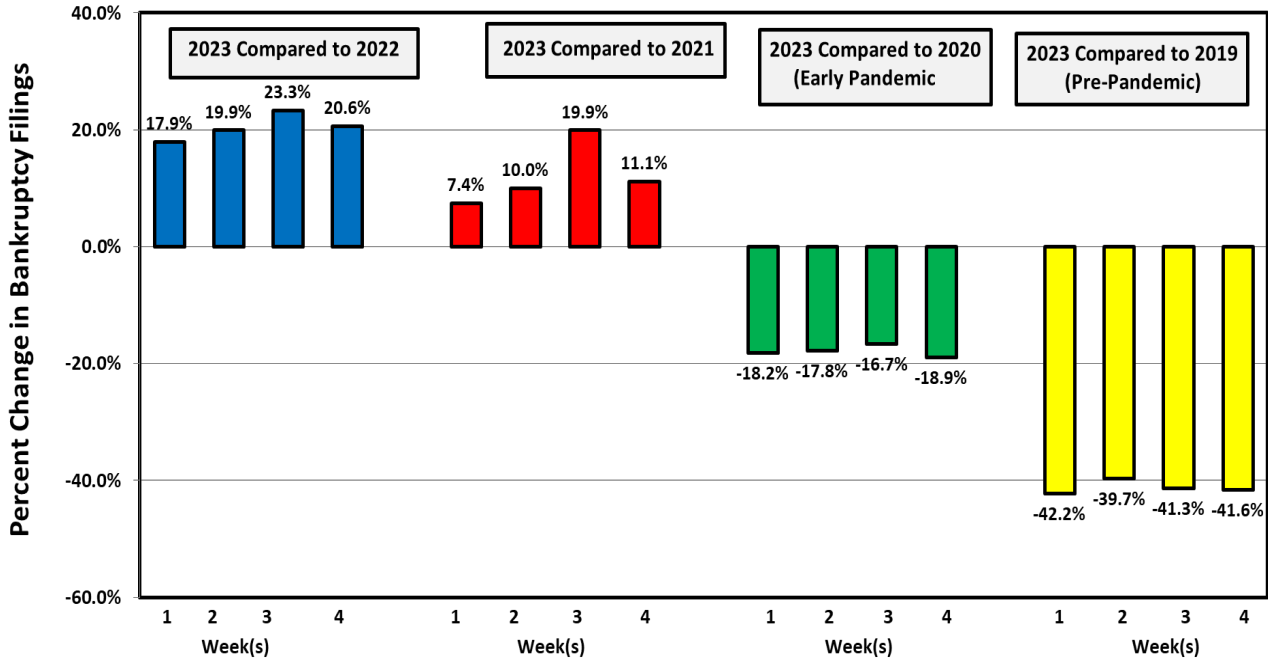
Week Ending  
November 19

### Bankruptcy Filing Trends (All Chapters) Percent Change From 2022, 2021, 2020 and 2019



Week Ending  
November 19

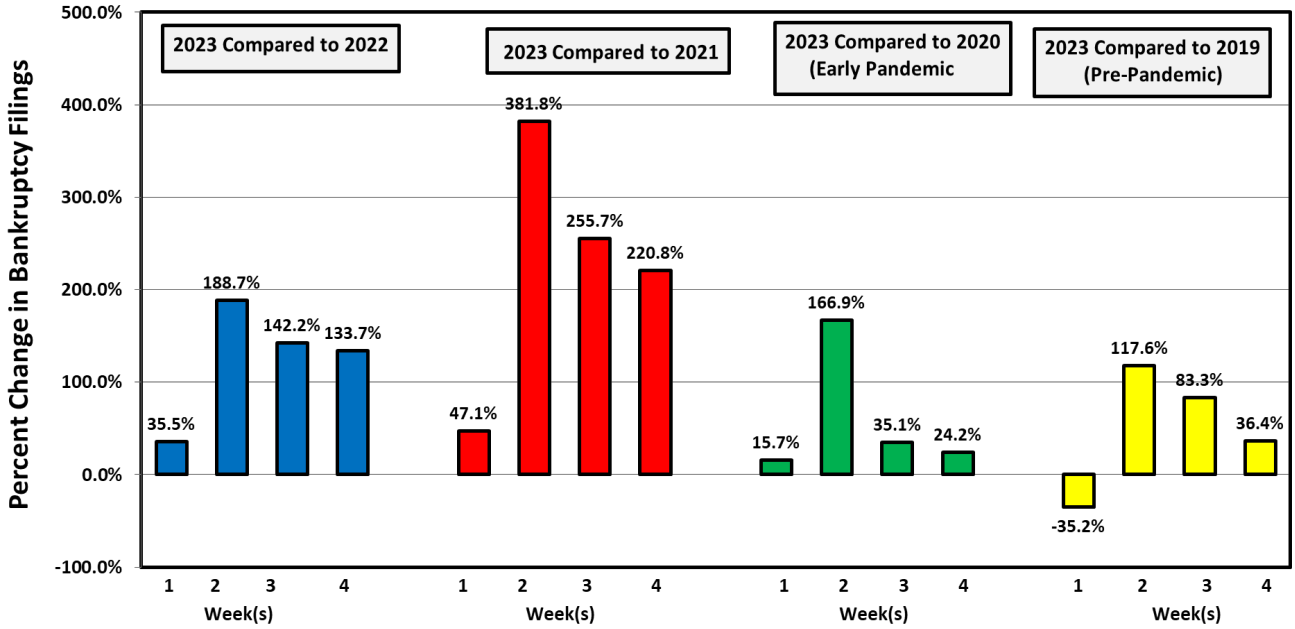
### Chapter 7 Filing Trends Percent Change From 2022, 2021, 2020 and 2019



Week Ending  
November 19

### Chapter 11 Filing Trends

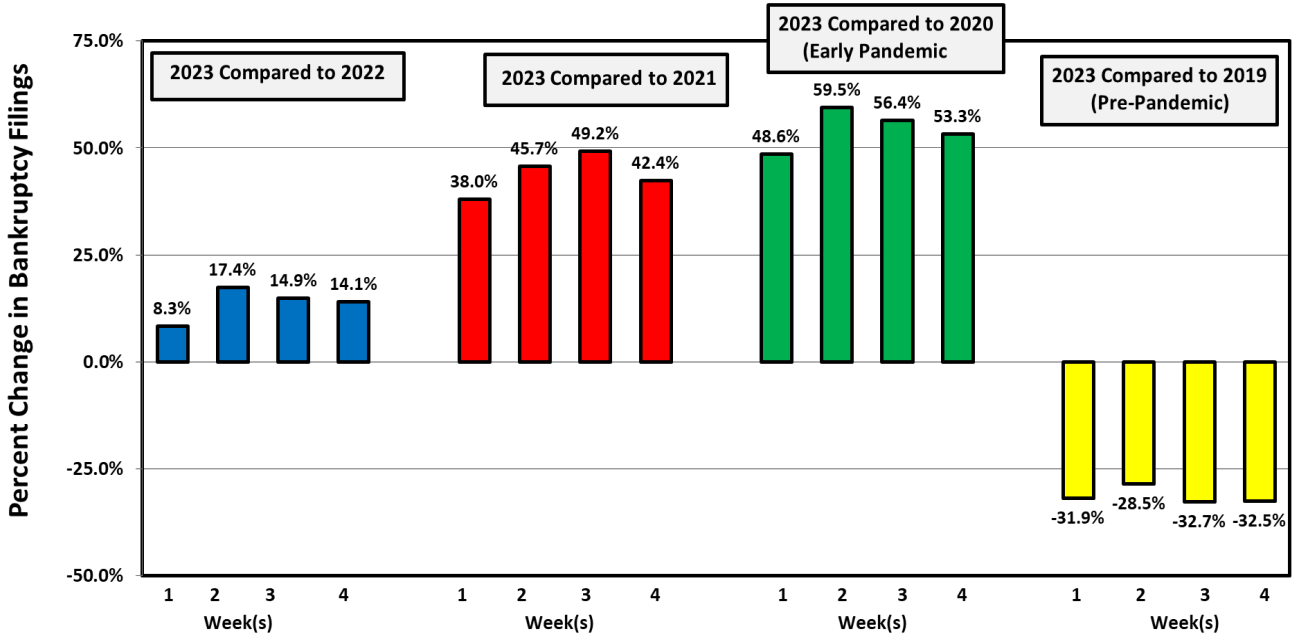
Percent Change From 2022, 2021, 2020 and 2019



Week Ending  
November 19

### Chapter 13 Filing Trends

Percent Change From 2022, 2021, 2020 and 2019



## Chapter 11 Cases

There were 103 chapter 11 cases filed during the week, more than during the same week each of the last three years. So far in 2023, more than 6,700 chapter 11 cases have been filed. In 2022 less than 5,000 chapter 11 cases were filed during the entire year.

<b>Types of Chapter 11 Cases Filed</b>					
	<b>November 13 - 19</b>				
	<b>2023</b>	<b>2022</b>	<b>2021</b>	<b>2020</b>	<b>2019</b>
<b>Total Filed</b>	<b>103</b>	<b>76</b>	<b>70</b>	<b>89</b>	<b>159</b>
<b>Solo Cases</b>	<b>66</b>	<b>59</b>	<b>55</b>	<b>67</b>	<b>76</b>
<b>Parent Cases</b>	<b>10</b>	<b>5</b>	<b>4</b>	<b>5</b>	<b>10</b>
<b>Child Cases</b>	<b>27</b>	<b>12</b>	<b>11</b>	<b>17</b>	<b>73</b>
<b>Filed By Individuals</b>	<b>16</b>	<b>24</b>	<b>21</b>	<b>17</b>	<b>35</b>
<b>Subchapter V Cases</b>	<b>45</b>	<b>27</b>	<b>24</b>	<b>38</b>	<b>N/A</b>

Only one notable chapter 11 case was filed during the week. Starboard Group of Alabama LLC, a franchise operator of numerous Wendy's and Subway, filed in the Middle District of Florida on November 14, along with nine related entities.

Also of note were the three chapter 15 cases filed in Delaware on November 17 that involved Spark Networks. The debtor is headquartered in Germany and owns a number of social dating platforms such as SilverSingles, Christian Mingle, and Jdate.

See ABI's Newsroom for news of the latest filings, and other news of interest to bankruptcy professionals, at [www.abi.org](http://www.abi.org).